



IBM Software Group

IBM WebSphere® Business Monitor V6.0.2

Advanced installation overview and remote database installation



@business on demand.

© 2007 IBM Corporation
Updated March 15, 2007

This presentation describes the WebSphere Business Monitor Version 6.0.2 advanced installation capability, including clustering.

Agenda

- Overview
- Creating remote Monitor databases



The agenda for the presentation includes overview of installation, which includes the new features, a look at the Monitor components and typical installation scenarios. You will see how to install remote databases, Monitor Server, Monitor Dashboard Server and Monitor Deployment Manager.

Section

Overview

This section will give you an overview of the advanced option for installing WebSphere Monitor, Version 6.0.2.

New in Monitor V6.0.2 advanced installation

- Improved launchpad program
 - ▶ Supports incremental installation
 - ▶ Supports multiple machine topology
 - ▶ Supports co-existence (Monitor and Dashboard)
 - ▶ Supports stand-alone node installation (Monitor node)
 - ▶ Supports clustering (Monitor Dmgr)



The installation process has improved significantly in this release. The improved Launchpad program makes installing the complete set of supporting software very simple. Launchpad now supports incremental installation. The prerequisite products can be installed manually outside of the Launchpad environment, and then Monitor can be incrementally installed “on top of” these prerequisite products. You can Install in a multiple machine topology or you can install Monitor Server and Dashboard server on the same machine. You can install Monitor into a stand-alone node or into a Deployment Manager node for clustering purposes.

New in Monitor V6.0.2 advanced installation

- Simplified database architecture
 - ▶ Simplified installation for remote databases (automatically catalogs remote databases)
- Use DB2® for Process Server databases (local database server)
 - ▶ To use a remote database server:
 - manually install WebSphere Process Server
 - generate the DDL scripts
 - create the databases on the remote db server

Database Architecture has been simplified. The number of databases has been reduced from five to two. The number of database replications is reduced from two to one. Database tables and columns now have simpler, more meaningful names. The installation for remote databases has been simplified and the Launchpad helps to catalog the remote databases.

New in Monitor V6.0.2 advanced installation

- Monitor V6.0.2 supports clustering
 - ▶ Only one member of the cluster will process events
 - If that cluster member goes down, another cluster member will automatically take over
 - ▶ Scalability is improved in the case of a cell with multiple models
 - No relief if you have a single model that receives a large number of events per minute
- Monitor V6.0.2 allows a Monitor node to be federated into a Network Deployment cell.
 - ▶ As many Monitor nodes can be federated into the cell as needed (subject only to licensing), and there is a single administration console for all Monitor nodes

6

Overview and remote database installation

© 2007 IBM Corporation

Clustering is now supported; you can setup clusters of servers for failover support. If one server goes down, the a backup server in the cluster will take over. A single Monitor model cannot run simultaneously on separate servers, but you can install a Monitor model on many nodes in a cluster for failover reasons. Clustering of Monitoring Models in WebSphere Monitor V6.0.2 is for high availability. It will not provide increased response time or throughput, since there will still only be a single JVM processing Common Base Events for the Monitor model. Scalability is improved in the case of a cell with multiple models but it will not provide any relief if you have a single model that receives a large number of events per minute.

You can install WebSphere Monitor into a stand-alone node and federate that node into a WebSphere Application Server Network Deployment cell. You can federate as many nodes as you like restricted only by the number of licenses that you have purchased. Using the Cell manager, you have a single administration console from which you can administer all of your Monitor nodes.

Installation components

- Provided pre-requisite software (basic and advanced)
 - ▶ IBM DB2 Enterprise Server V8.2.6
 - ▶ DB2 Cube Views V8.2.6
 - ▶ DB2 Alphablox V8.4.0
 - ▶ WebSphere Application Server Network Deployment V6.0.2.17
 - ▶ WebSphere Portal Server V5.1.0.4
 - ▶ WebSphere Process Server V6.0.2
 - ▶ Monitor V6.0.2 Driver
- Monitor components (3 major components)
 - ▶ Monitor server, Dashboard server and Databases



This is a list of the prerequisite software products packaged with Monitor media.

There are three Monitors components that are installed, the Monitor Server, Dashboard Server and Monitor databases.

WebSphere Business Monitor databases

- Monitor advanced installation (stand-alone)
 - ▶ Two databases: MONITOR and DATAMART
 - ▶ Databases can be on either local or a remote database server
 - ▶ You must specify remote repository information if databases are remote, so they can be automatically cataloged
- All Monitor installations in a common cell need to share the Monitor database
 - ▶ Monitor databases must be remote

For the Monitor advanced installation mode, the databases can be either local or remote. If the remote database option is selected, the Launchpad assumes that the Monitor Databases are already created and asks for the remote repository information so that it can catalog the databases.

When using a cell manager in a Network Deployment environment, all of the Monitor nodes in the cell will share the same Monitor database. In this case, the Monitor database must be on a remote machine.

Installation possibilities

- Monitor advanced installation
 - ▶ The Monitor server, Dashboard server and Databases can be either on a single machine or on multiple machines based on the requirement
 - If Monitor server and Dashboard server on same machine, if you install prerequisites outside of Launchpad, install WebSphere Application Server and WebSphere Portal Server before installing WebSphere Process Server
 - ▶ Option to choose from a stand-alone node or cluster environment
 - ▶ The databases must be created first if they are remote to Monitor and Dashboard installations

Monitor can be installed in many different topologies. For instance, the Monitor Server and Dashboard Server can be on a single machine and the Databases can be remote. For a Remote database server, the databases should be created first to make them available for the Monitor Launchpad to catalog them automatically. You can also install into a stand-alone node or into a deployment manager node.

If you install the Monitor Server and the Dashboard server on the same machine and you choose to pre-install the prerequisites not using the Monitor Launchpad, make sure you install WebSphere Application Server before installing WebSphere Process Server. The reason is that Process Server will detect the existing WebSphere Application Server installation and adjust its port numbers accordingly. However in the reverse situation, WebSphere Application Server will not adjust its port numbers so you will have port conflicts.

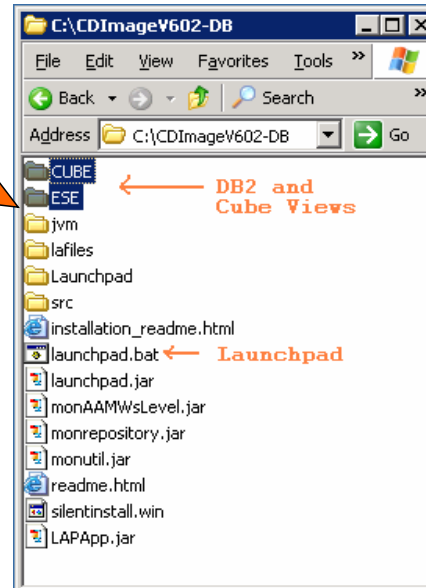
Section

Install remote database server

This section describes the installation of a remote database server.

Launchpad – Advanced – Remote database

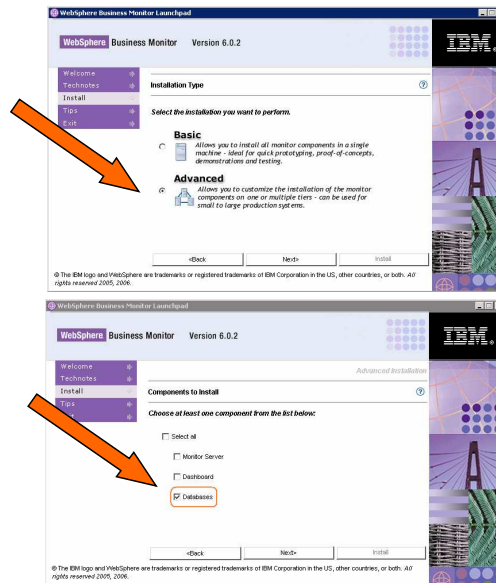
- Install and set up remote database server
 - ▶ Create an on-disk structure for DB2 and Cube Views
- Software needed
 - ▶ DB2 ESE V8.2.6
 - ▶ DB2 Cube Views V8.2.6
 - ▶ Monitor V6.0.2 Driver
- Run launchpad.bat



Perform these steps on the remote database machine. To install the Monitor database server, make sure you have the correct disk structure as in the screen capture. You should have separate folders for the prerequisites including Cube Views and DB2 ESE. Then you run the Monitor launchpad.bat to start the installation.

Launchpad – Advanced – Remote database

- Select Installation type as Advanced
- Select only the check box next to **Databases**



12

Overview and remote database installation

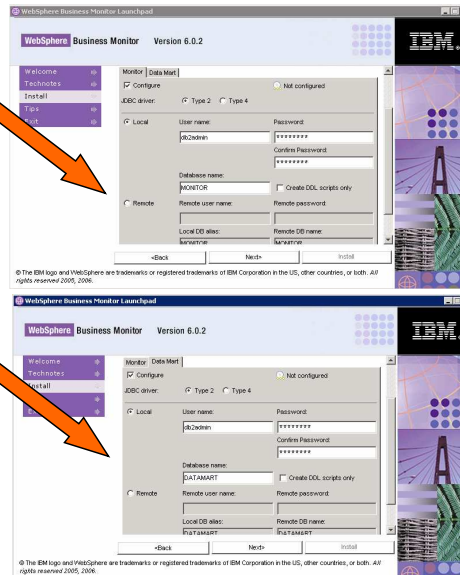
© 2007 IBM Corporation

When prompted, select Advanced installation type and click Next.

For the components to install, by default all the components are selected for install, but you should ensure that only the Databases option is selected.

Launchpad – Advanced – Remote database

- **MONITOR DB Setup**
 - ▶ Select **MONITOR** tab
 - ▶ Select for **Configure**
 - ▶ Choose between the JDBC Driver type : Type 2 (native binary) or 4 (all Java™)
 - ▶ DB2 user and password
 - ▶ Select the **Local** option
- **DATAMART DB Setup**
 - ▶ Select **DATAMART** tab
 - ▶ Select for **Configure**
 - ▶ Choose between the JDBC Driver type : Type 2 or 4
 - ▶ DB2 user and password
 - ▶ Select the **Local** option



13

Overview and remote database installation

© 2007 IBM Corporation

On this panel, there are two tabs, one for the MONITOR database and one for the DATAMART database. You will need to select “Install”, choose the type of JDBC driver, enter your DB2 user name and password, and select the Local database option.

Note that the DB2 user can be pre-existing or the Launchpad can create one for you.

If your DBA needs to tailor the database installation, then you can select the check box next to “Manual Create”. This will generate the DDL scripts and they can be tailored and run to create the databases.

There are two types of **JDBC Driver Types** that can be chosen from: **Type 2** and **Type 4**.

For Type 2, the native-API, partly Java driver communicates directly with the database server; therefore it requires some binary code on the client machine.

For Type 4, the native-protocol, all Java driver converts JDBC calls into the vendor-specific database management system protocol so that the client applications can communicate directly with the database server. Type 4 drivers are completely implemented in Java to achieve platform independence and eliminate deployment administration issues.

Summary

- Simplified database architecture
- Cluster support
- Remote database installation

In summary, this presentation has covered some of the new features in WebSphere Business Monitor V6.0.2 Advanced, and showed some remote database installation choices.

Feedback

Your feedback is valuable

You can help improve the quality of IBM Education Assistant content to better meet your needs by providing feedback.

- Did you find this module useful?
- Did it help you solve a problem or answer a question?
- Do you have suggestions for improvements?

[Click to send e-mail feedback](#)



You can help improve the quality of IBM Education Assistant content by providing feedback.

Trademarks, copyrights, and disclaimers

The following terms are trademarks or registered trademarks of International Business Machines Corporation in the United States, other countries, or both:

DB2 IBM WebSphere

Java, JDBC, and all Java-based trademarks are trademarks of Sun Microsystems, Inc. in the United States, other countries, or both.

Product data has been reviewed for accuracy as of the date of initial publication. Product data is subject to change without notice. This document could include technical inaccuracies or typographical errors. IBM may make improvements or changes in the products or programs described herein at any time without notice. Any statements regarding IBM's future direction and intent are subject to change or withdrawal without notice, and represent goals and objectives only. References in this document to IBM products, programs, or services does not imply that IBM intends to make such products, programs or services available in all countries in which IBM operates or does business. Any reference to an IBM Program Product in this document is not intended to state or imply that only that program product may be used. Any functionally equivalent program, that does not infringe IBM's intellectual property rights, may be used instead.

Information is provided "AS IS" without warranty of any kind. THE INFORMATION PROVIDED IN THIS DOCUMENT IS DISTRIBUTED "AS IS" WITHOUT ANY WARRANTY, EITHER EXPRESS OR IMPLIED. IBM EXPRESSLY DISCLAIMS ANY WARRANTIES OF MERCHANTABILITY, FITNESS FOR A PARTICULAR PURPOSE OR NON-INFRINGEMENT. IBM shall have no responsibility to update this information. IBM products are warranted, if at all, according to the terms and conditions of the agreements (for example, IBM Customer Agreement, Statement of Limited Warranty, International Program License Agreement, etc.) under which they are provided. Information concerning non-IBM products was obtained from the suppliers of those products, their published announcements or other publicly available sources. IBM has not tested those products in connection with this publication and cannot confirm the accuracy of performance, compatibility or any other claims related to non-IBM products.

IBM makes no representations or warranties, express or implied, regarding non-IBM products and services.

The provision of the information contained herein is not intended to, and does not, grant any right or license under any IBM patents or copyrights. Inquiries regarding patent or copyright licenses should be made, in writing, to:

IBM Director of Licensing
IBM Corporation
North Castle Drive
Armonk, NY 10504-1785
U.S.A.

Performance is based on measurements and projections using standard IBM benchmarks in a controlled environment. All customer examples described are presented as illustrations of how those customers have used IBM products and the results they may have achieved. The actual throughput or performance that any user will experience will vary depending upon considerations such as the amount of multiprogramming in the user's job stream, the I/O configuration, the storage configuration, and the workload processed. Therefore, no assurance can be given that an individual user will achieve throughput or performance improvements equivalent to the ratios stated here.

© Copyright International Business Machines Corporation 2007. All rights reserved.

Note to U.S. Government Users - Documentation related to restricted rights-Use, duplication or disclosure is subject to restrictions set forth in GSA ADP Schedule Contract and IBM Corp.