



IBM Software Group

# WebSphere® Business Modeler V6.1.2

## *Process modeler enhancements*



@business on demand.

© 2008 IBM Corporation  
Updated September 4, 2008

This education module will discuss the new enhancements to the process editor for the WebSphere Business Modeler V6.1.2.

## New features and improvements

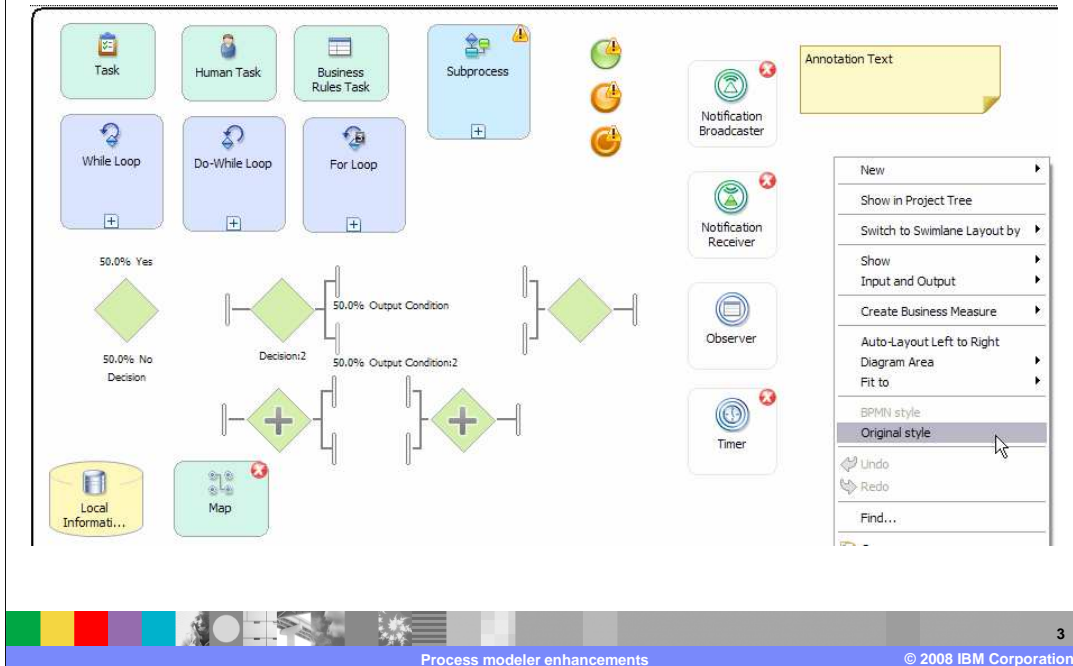
- Business process modeling notation (BPMN)
  - ▶ Support for the icons and symbols
  - ▶ Mode switch to accommodate their style of choice
- Custom images for icons
- Dynamic palette
  - ▶ Size, move, show/hide, set as view
  - ▶ Drawer style, consistent with other tools in the WebSphere Business Integration suite
- Breadcrumb navigation in process diagram
- Connection grabbie
- Show/hide inputs in process diagram



The business process editor for WebSphere Business Modeler 6.1.2 provides a new graphical style with the introduction of the business process modeling notation, support for custom icons, a dynamic palette and breadcrumb navigation.

Each of these new features is discussed in detail in subsequent slides.

## Business process modeling notation



Shown here are the new BPMN icons. There are no semantic differences from the 'original style' icons so switching back and forth between them is a breeze. Just use the popup menu and select the style you want to use. When creating a new business process you will also have the opportunity to select the presentation style you prefer. Alternatively you can change the style in the preferences to affect the mode for all new diagrams.

This will allow you to adopt the new notation style at your own pace.

The red x's indicate that the modeling element being used requires some additional work, like making an association to another element.

Starting in the upper left quadrant are the tasks. Moving to the right are the events, Start, Stop, Terminate, Notification Broadcaster, Notification Receiver, Observer and Timer.

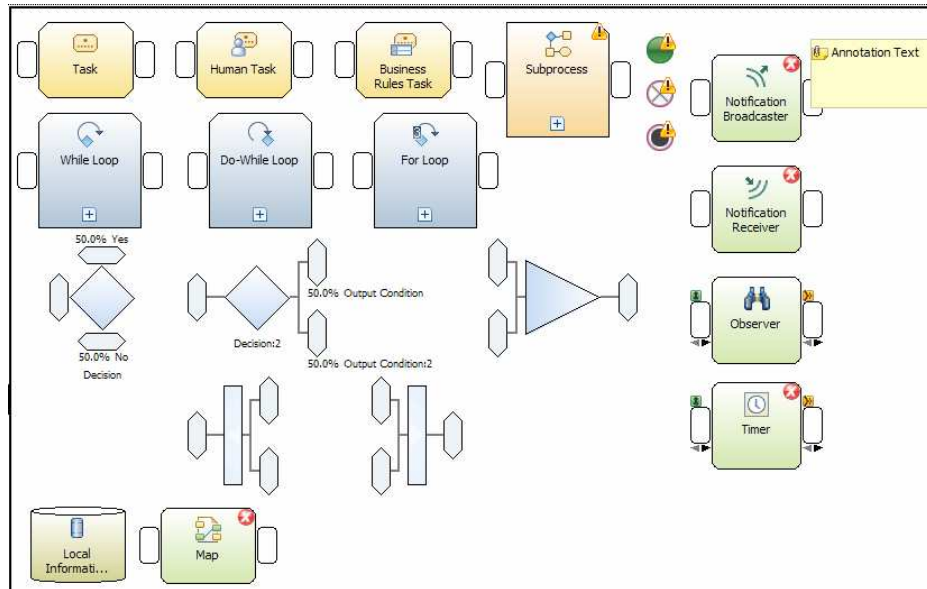
Completing the top row on the far right is the annotation text box where you can highlight information about the process or process elements. The annotation text box can be associated with a given element.

The next group of elements is the Gateways; Simple Decision, multiple-choice decision and the corresponding merge.

The two Gateway elements on the next row, the ones with the + sign, are the ford and join.

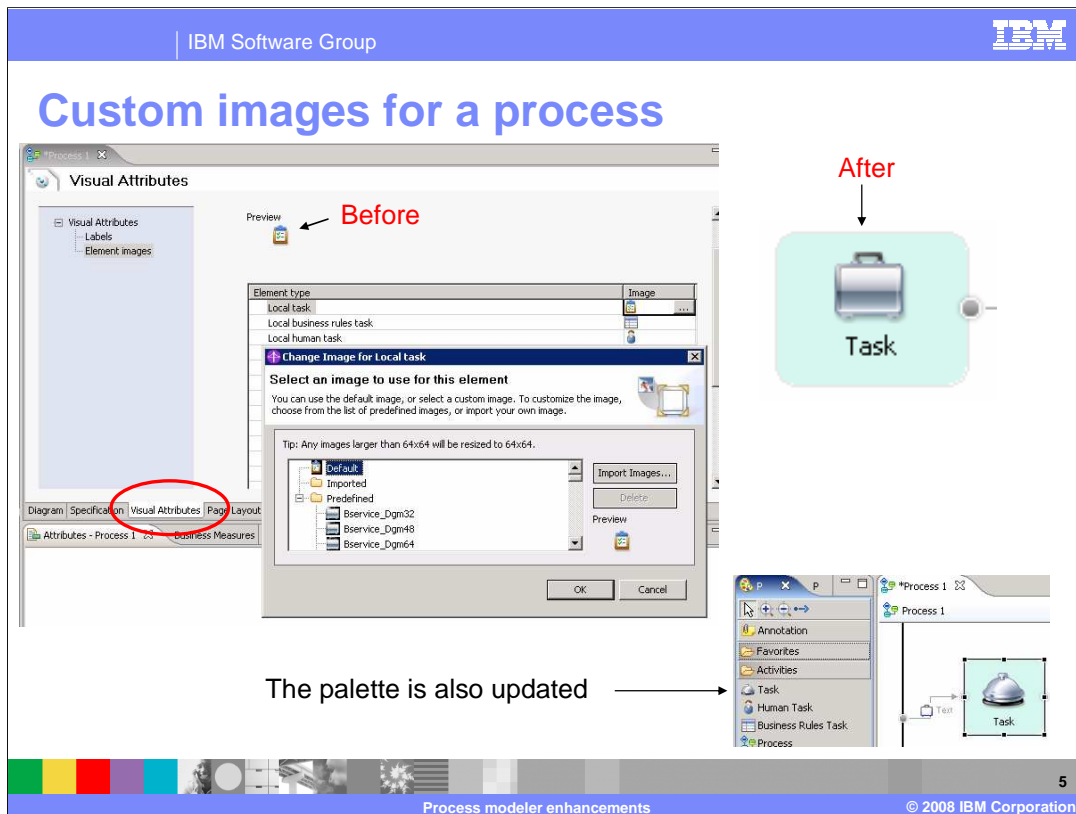
At the bottom are the data elements, repository and map.

## Original style



If you select the original style menu option all the icons are changed to the original style. They are shown here for comparison and with the new BPMN style notation shown on the previous page.

It is very important to remember that no new semantics have been introduced with the new notation.



Did you ever want to use one of your own special icons on one of your process elements? Well now you can.

You can do it at three levels. You can change the icon for a single element, the process you're working in or you can change default for the entire workspace.

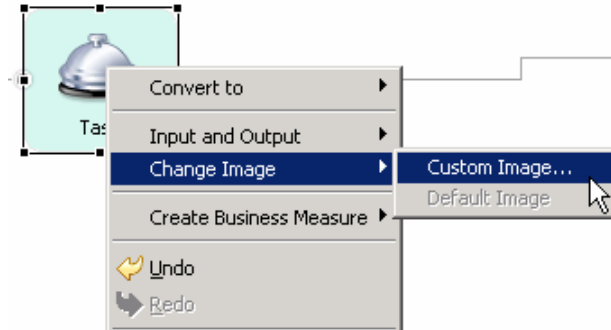
To apply the new icon to the entire workspace you use the preferences. Shown here is the way to override the default icon for a specific business process.

First go to the visual attributes tab, the red circle. You will see a list of all the process elements and the default icon is displayed for the currently selected element. To change the icon, select the icon in the image column and then select the button when it appears. Selecting the button will present you with a dialog where you can choose the icon you want from a preinstalled list or you can import your own. Save your changes and you are done. That's all there is to it.

Notice that the icon in the palette is also updated to display your new icon.

## Custom images per element

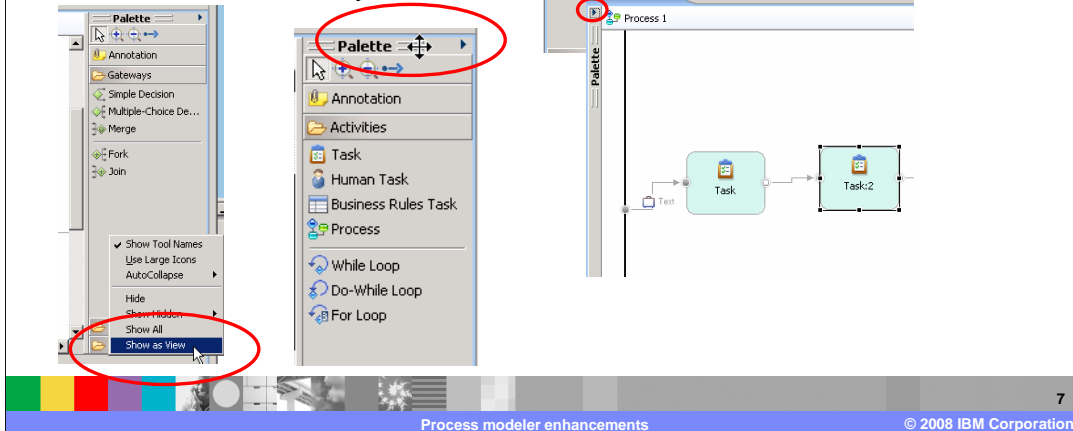
- Custom images can be associated with individual elements
  - ▶ Exceptions: start, stop, decision, fork, join and merge
  - ▶ The palette is not updated in this case



Here you can see how to change the image for a single element.

## Dynamic palette

- May hide or show the palette
- Move to the left or the right of the process diagram
- Display it as a view
  - ▶ With all the flexibility of a view



Ever feel like you needed more space on your canvas to layout your business process? Perhaps you would rather have it on the right or the bottom or maybe even in a separate view. Now you can do any of those things. Hide it, move it, or convert it to a view.

The clues are in the red circles.

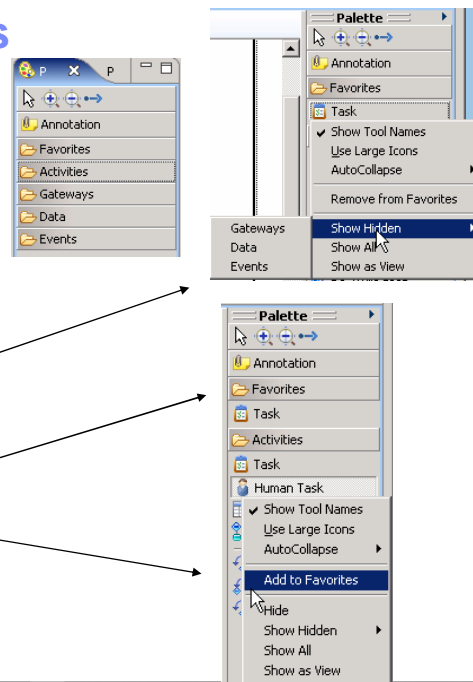
To show or hide use the little arrow on the top left of the palette.

To move it to the right, use the title bar for the palette.

To convert it to a view, use the menu option.

## Dynamic palette drawers

- The palette now sports the drawer style menus
  - ▶ Consistent with other eclipse based tools in the WebSphere Business Process Management suite
- Drawers can be hidden and redisplayed
  - ▶ Individual elements in a drawer can also be hidden and redisplayed
- You can create a **favorites** drawer
  - ▶ Add all your commonly used tools and hide the other drawers



The new dynamic palette now uses drawers as used in other programs such as WebSphere Integration Developer 6.1.2. The drawers group the elements into categories; activities, gateways, data and events.

The drawers are very flexible, allowing you to customize them to suite your individual needs for the task at hand. You can hide and show individual elements in a drawer, hide and show an entire drawer or create your own favorites drawer.

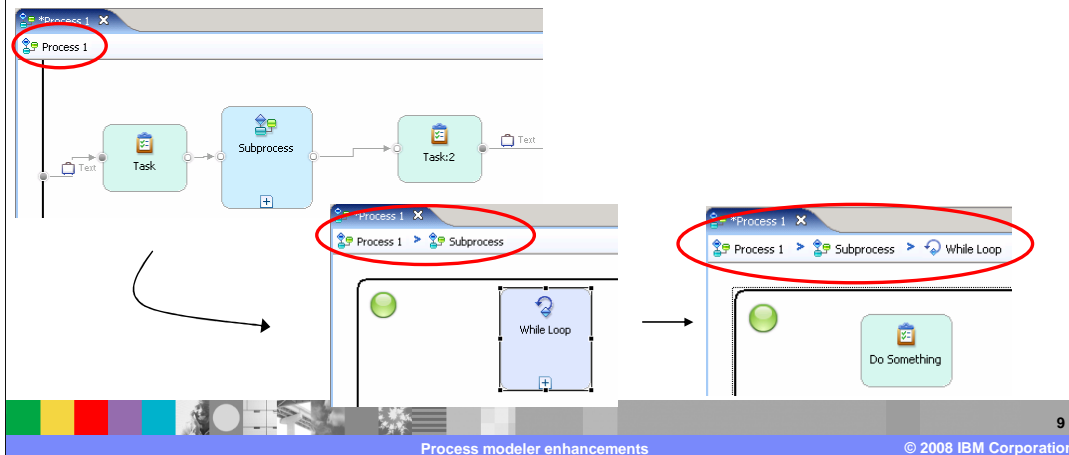
As you can see from the popup menu, it is very easy to reestablish the default by using the show all option.

Note, the favorites drawer is only displayed if there is something in it.



## Breadcrumb navigation

- Link style navigation is now available to help navigate complex diagrams
  - ▶ Also called breadcrumbs because the trail is marked and displayed as you browse the diagram



Breadcrumb navigation is a way to keep track of where you are in a nested process and it also provides a way to step back to any level that you've previously navigated through.

When you choose to enter a sub-process by double clicking on the icon, notice the link area at the top of the view (the top reddest circle).

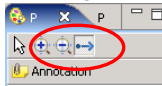
Each time you traverse to another nested sub-process or control loop, the level is added to the list, extending it to the right. (Notice the next two red circles).

Each level is a link and you can go back to any of the previous levels by selecting the link.

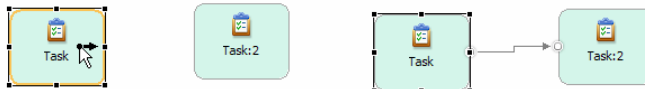
You know where you are and have a quick easy way to get back to the level you need.

## Connection grabbie

- A more efficient way to work with connections in a process diagram
  - ▶ Consistent with other eclipse based tools in the WebSphere Business Integration suite of tools
  - ▶ Start by selecting the “create connection” tool in the palette.



- ▶ Hover over the icon with the cursor. When the yellow border is displayed and the cursor changes, you have the source. Just move the mouse over to the target and click



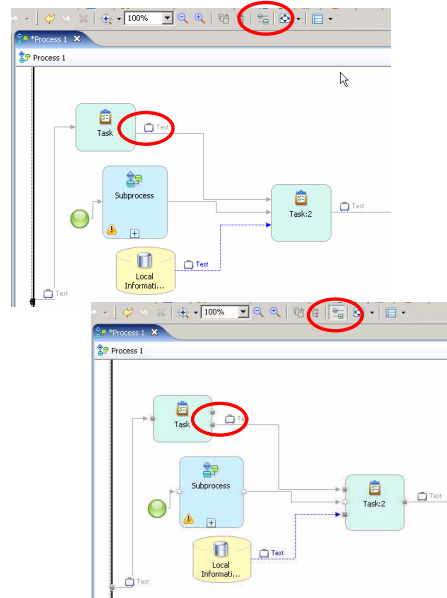
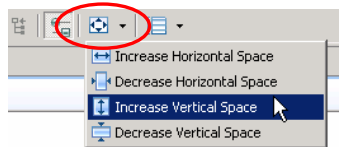
10

The way connections are made in the process diagram has been changed slightly.

First select the creation connection icon in the palette. Next hover over the source element and once the indicators are displayed, move the mouse to the target and click the left mouse button.

## Show or hide inputs and resize diagram

- Hide or show inputs on the process flow elements.
- Resize the diagram
  - ▶ Used to be in the palette
  - Now in the tool bar



Quite often the inputs clutter up your diagram. You now have the ability with WebSphere Business Modeler V6.1.2 to hide or show them at will. The hide/show input button is located on the tool bar. (The top reddest circle)

The way you control the resizing of the diagram has been changed. It has been moved from the palette to the toolbar.

The picture in the lower left of the screen shows the toolbar icon that is used to resize the diagram.

Once you make a selection, like, decrease horizontal space, the selection is remembered and you can easily repeat the operation by selecting the icon instead of the drop down menu.

## Summary

- Many new usability and productivity enhancements with WebSphere Business Modeler V6.1.2
  - ▶ BPMN – Business Process Modeling Notation
  - ▶ Custom images for element icons
  - ▶ Dynamic palette
  - ▶ Breadcrumb navigation in process diagram
  - ▶ Connection grabbie
  - ▶ Show or hide inputs in process diagram



To summarize, there are many new usability and productivity enhancements in WebSphere Business Modeler V6.1.2.

There is support for the BPMN style of notation, custom icons, dynamic palette, breadcrumb navigation, and the ability to show and hide the inputs.

Each of these improvements is designed to make you more productive when designing your business models.

## Feedback

### Your feedback is valuable

You can help improve the quality of IBM Education Assistant content to better meet your needs by providing feedback.

- Did you find this module useful?
- Did it help you solve a problem or answer a question?
- Do you have suggestions for improvements?

Click to send e-mail feedback:

[mailto:iea@us.ibm.com?subject=Feedback\\_about\\_WPIv612\\_Process\\_Modeler.ppt](mailto:iea@us.ibm.com?subject=Feedback_about_WPIv612_Process_Modeler.ppt)

This module is also available in PDF format at: [..\\WPIv612\\_Process\\_Modeler.pdf](..\\WPIv612_Process_Modeler.pdf)



You can help improve the quality of IBM Education Assistant content by providing feedback.

## Trademarks, copyrights, and disclaimers

The following terms are trademarks or registered trademarks of International Business Machines Corporation in the United States, other countries, or both:

IBM                      WebSphere

A current list of other IBM trademarks is available on the Web at <http://www.ibm.com/legal/copytrade.shtml>

Product data has been reviewed for accuracy as of the date of initial publication. Product data is subject to change without notice. This document could include technical inaccuracies or typographical errors. IBM may make improvements or changes in the products or programs described herein at any time without notice. Any statements regarding IBM's future direction and intent are subject to change or withdrawal without notice, and represent goals and objectives only. References in this document to IBM products, programs, or services does not imply that IBM intends to make such products, programs or services available in all countries in which IBM operates or does business. Any reference to an IBM Program Product in this document is not intended to state or imply that only that program product may be used. Any functionally equivalent program, that does not infringe IBM's intellectual property rights, may be used instead.

Information is provided "AS IS" without warranty of any kind. THE INFORMATION PROVIDED IN THIS DOCUMENT IS DISTRIBUTED "AS IS" WITHOUT ANY WARRANTY, EITHER EXPRESS OR IMPLIED. IBM EXPRESSLY DISCLAIMS ANY WARRANTIES OF MERCHANTABILITY, FITNESS FOR A PARTICULAR PURPOSE OR NONINFRINGEMENT. IBM shall have no responsibility to update this information. IBM products are warranted, if at all, according to the terms and conditions of the agreements (for example, IBM Customer Agreement, Statement of Limited Warranty, International Program License Agreement, etc.) under which they are provided. Information concerning non-IBM products was obtained from the suppliers of those products, their published announcements or other publicly available sources. IBM has not tested those products in connection with this publication and cannot confirm the accuracy of performance, compatibility or any other claims related to non-IBM products.

IBM makes no representations or warranties, express or implied, regarding non-IBM products and services.

The provision of the information contained herein is not intended to, and does not, grant any right or license under any IBM patents or copyrights. Inquiries regarding patent or copyright licenses should be made, in writing, to:

IBM Director of Licensing  
IBM Corporation  
North Castle Drive  
Armonk, NY 10504-1785  
U.S.A.

Performance is based on measurements and projections using standard IBM benchmarks in a controlled environment. All customer examples described are presented as illustrations of how those customers have used IBM products and the results they may have achieved. The actual throughput or performance that any user will experience will vary depending upon considerations such as the amount of multiprogramming in the user's job stream, the I/O configuration, the storage configuration, and the workload processed. Therefore, no assurance can be given that an individual user will achieve throughput or performance improvements equivalent to the ratios stated here.

© Copyright International Business Machines Corporation 2008. All rights reserved.

Note to U.S. Government Users - Documentation related to restricted rights-Use, duplication or disclosure is subject to restrictions set forth in GSA ADP Schedule Contract and IBM Corp.