

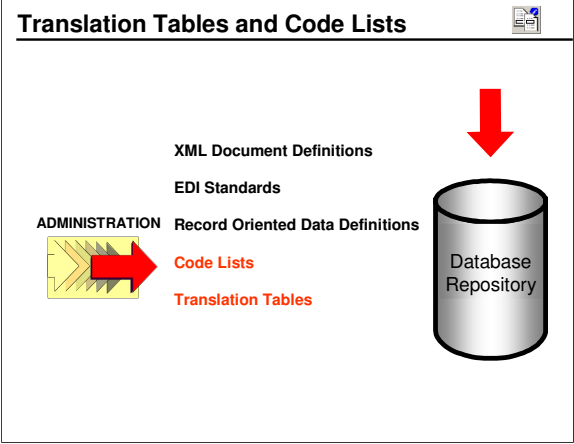
Translation Tables provide the ability to convert an input element to a table lookup value to be written to the target element. Code Lists provide the ability to validate whether an element value is one of the values in the list. Maps will identify the use of Translation Tables and Code Lists.

Unit Objectives

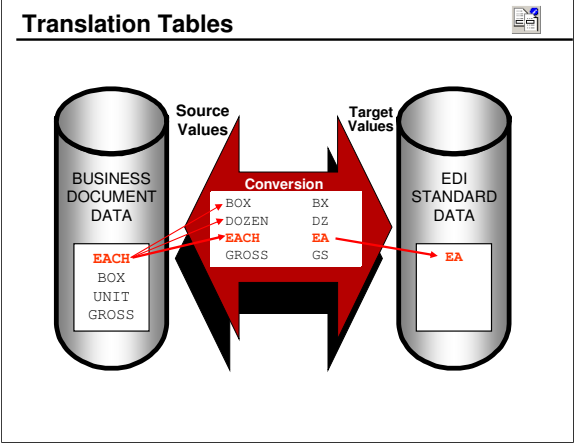


- Describe the function of translation tables
- Distinguish between “Source” and “Target” columns for Translation Tables
- Identify when duplicate entries are allowed in translation tables
- Create new translation tables
- Describe the function of code lists
- Identify and use standard code lists
- Create new code lists

Will address each of these objectives in this unit.



Translation Tables and Code Lists are located in the mapping Functional Area. They may be entered using the editors provided or imported from various sources.



In this example, the input field EACH is used to identify a match in the translation table. The corresponding value is used as the value to be mapped to the target element.

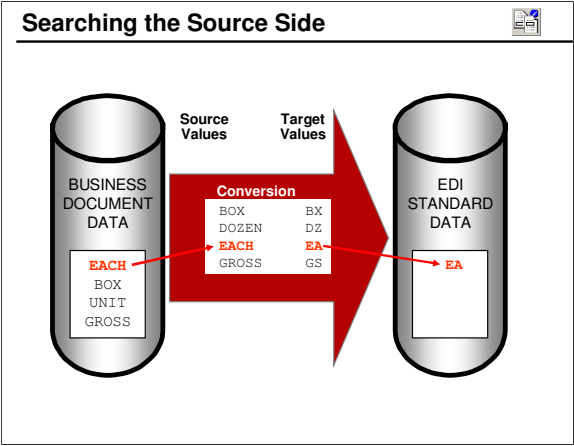
Bi-Directionality of Tables

Either side of a translation table may be designated as the search side.

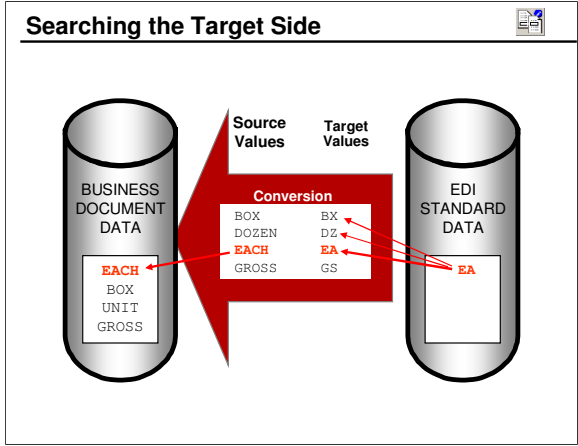
Conversion	
BOX	BX
DOZEN	DZ
EACH	EA
GROSS	GS

Notice that the big red arrow is **BI-DIRECTIONAL**

Tables are bi-directional but the map needs to indicate which side of the table is the search argument.



A Translation Table will normally be used to convert a source value to a target value.



Here the standard value (target side) is being converted to the value identified on the source side. The same table could have been used to convert a source value to a target value.

Translation Tables



- Translation Tables provide for the automatic conversion of source elements to corresponding target element values through table lookup during the translation process
- **Translation Tables** are found under **Mapping**
- You will notice some system tables are already present
- Generally you will create your own tables for element translation

Most of the tables created with installation of the DIS Client are used internally by the Data Interchange Services. An exception is the *EDI2DICT* table that may be used to identify the Dictionary and Document Definition for EDI source data.

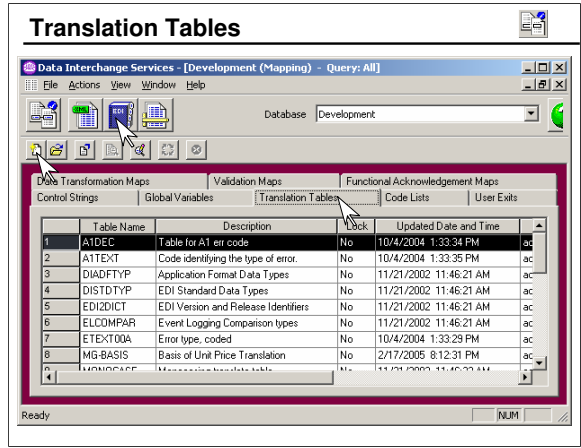
Translation Table – Duplicate Entries



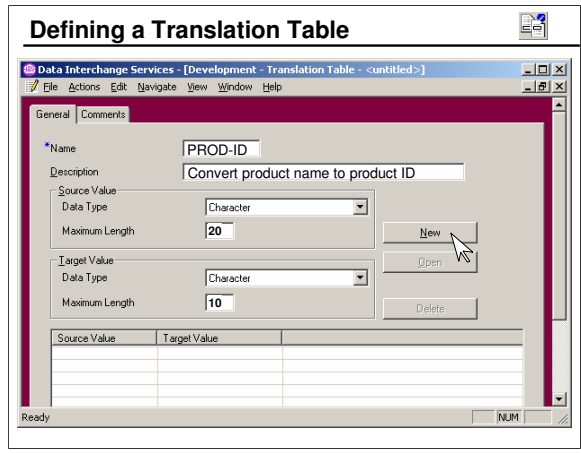
Although either the Source or Target column of a Translation Table may be searched, to avoid ambiguity, duplicate entries may only be present on the target side of a table.

SOURCE	TARGET
Plastic beads	Drop-ship
Buttons	Warehouse
Streamers	Drop-ship
Confetti	Drop-ship
Banners	Warehouse

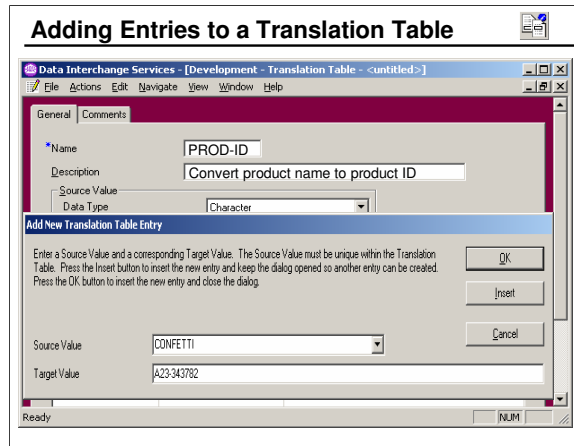
Duplicate entries may be in the target or result side of the table, but not in the search side.



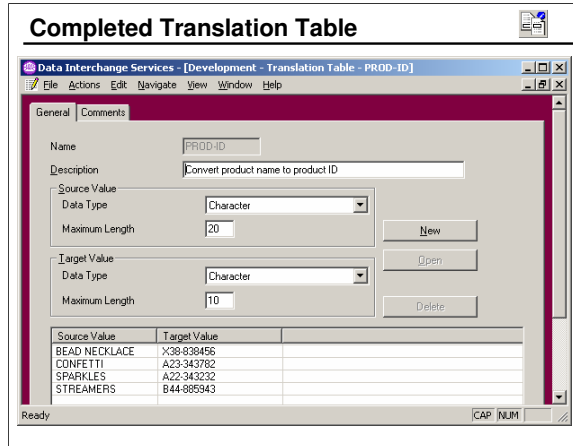
Translation Tables are found as a tab under the Mapping Functional Area. You will see some tables already defined. Click the *New* icon to create a new table.



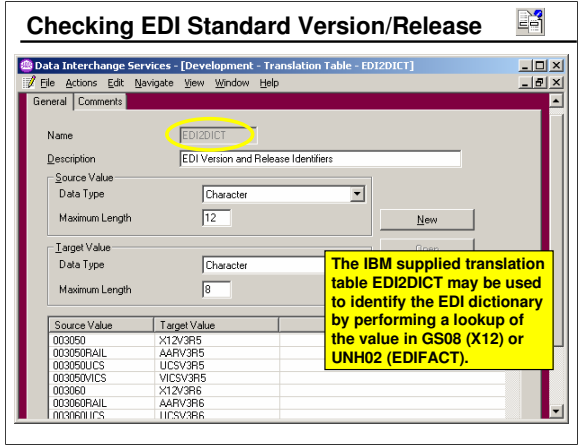
First define a name for the table. The name may be up to 8 characters long. Then define a data type (Character or Real) and length for the Source and Target values. Data types available are *Character* or *Real*. *Real* is used only when numeric comparisons are required. Click the *New* button to begin adding entries.



For each pair of table entries, enter the source and target values. Click the *Insert* button to insert additional pairs of entries or click *OK* and select *New* for each new pair.



This table contains just four entries. The completed Translation Table is sorted. The user can change the sort of either column by clicking on the column header. The sort may be by ascending or descending value.



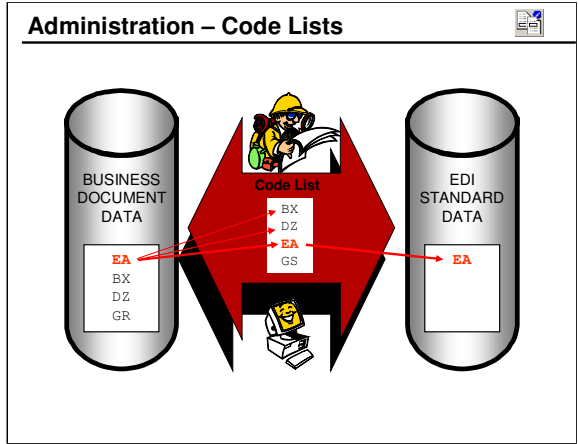
This table is used for source EDI data only. It is not used when the DICTIONARY and DOCUMENT are defined in the PERFORM statement.

Code Lists

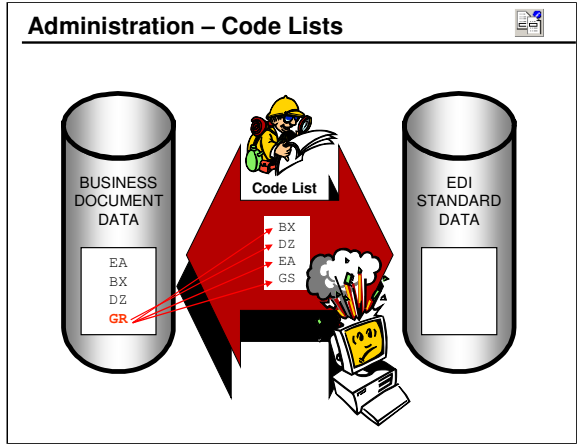


- The purpose of Code Lists is to verify the validity of elements during EDI document validation or it can be used in mapping to determine if a value is contained within a list of values
- Code Lists are found under both the Mapping and EDI Functional Areas
- Code Lists are provided with EDI standards for ID Type Elements
 - These Code Lists are named based on the Element ID and the Standard Version and Release
 - For example: Code List 353X410 is the code list for the Transaction Set Purpose Code (element 353) as defined for the X12 Version 4 Release 1 standard
- Users may add their own Code Lists
 - User Code Lists may be subsets of EDI Code Lists or they may be unique to local requirements
- Source of Code List definitions include: standards committees, industry organizations, the United States Postal Service (zip codes and state codes), the Federal Aeronautics Administration (airport codes), etc.

Code Lists consist of a single column of values. That list will be used to determine if a given element contains a valid value. The table uses a second column to describe the values in the first. The second column is only descriptive and not used during translation.



Here the Code List is searched for the value EA.



If a value is not found in a Code List, an element level error is generated.

Code Lists

Data Interchange Services - [Development (Mapping) - Query: All]

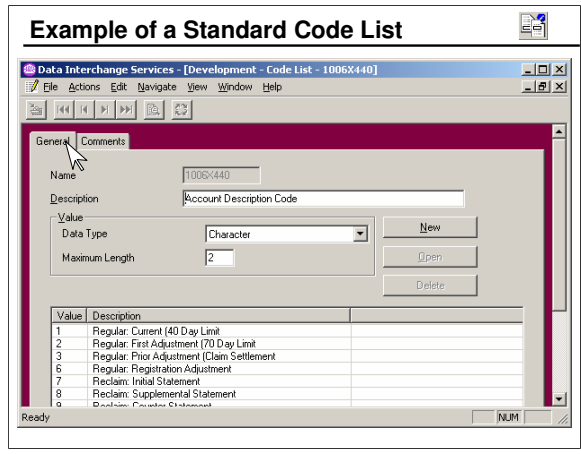
File Actions View Window Help

Database: Development

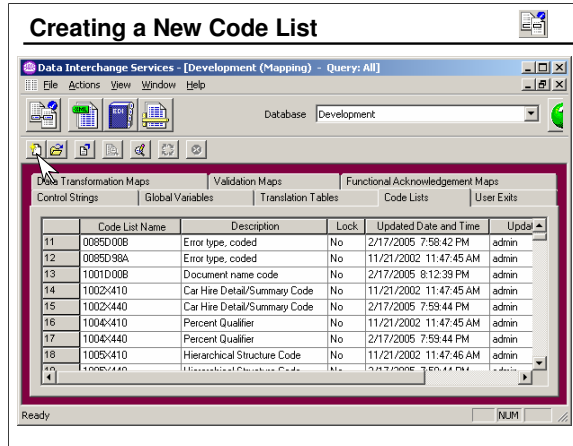
Data Transformation Maps | Validation Maps | Functional Acknowledgement Maps
 Control Strings | Global Variables | Translation Tables | Code Lists | User Exits

	Code List Name	Description	Lock	Updated Date and Time	Updat
11	0095D00B	Error type, coded	No	2/17/2005 7:59:42 PM	admin
12	0095D98A	Error type, coded	No	11/21/2002 11:47:45 AM	admin
13	1001D00B	Document name code	No	2/17/2005 6:12:39 PM	admin
14	1002:410	Car Hire Detail/Summary Code	No	11/21/2002 11:47:45 AM	admin
15	1002:440	Car Hire Detail/Summary Code	No	2/17/2005 7:59:44 PM	admin
16	1006:410	Percent Qualifier	No	11/21/2002 11:47:45 AM	admin
17	1006:440	Percent Qualifier	No	2/17/2005 7:59:44 PM	admin
18	1005:410	Hierarchical Structure Code	No	11/21/2002 11:47:46 AM	admin
19	1005:440	Hierarchical Structure Code	No	2/17/2005 7:59:44 PM	admin
20	1006:410	Account Description Code	No	11/21/2002 11:47:46 AM	admin
21	1006:440	Account Description Code	No	2/17/2005 7:59:44 PM	admin

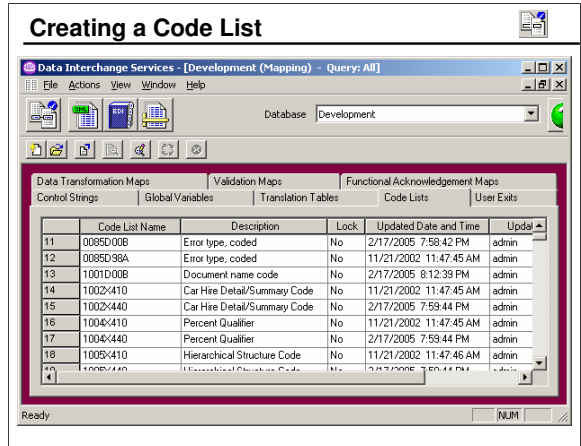
This list includes both EDIFACT and X12 Code Lists. The Code List names are the concatenation of the element ID and the standard ID and version.



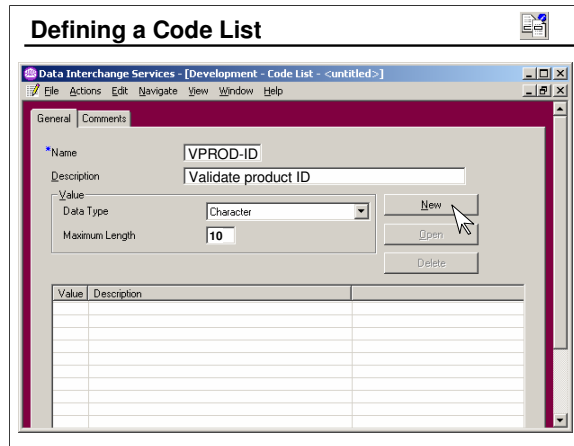
When this Code List is used during EDI document validation, the value tested must match one of the "Value" entries or an element level error is generated. The Code List can also be used in mapping to determine if an element contains a value from a list of values



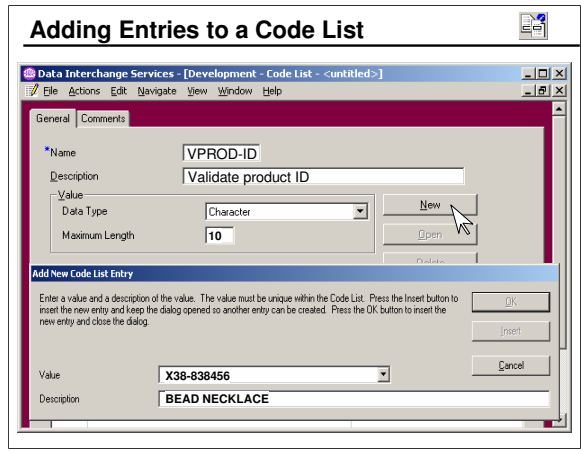
Click on the *New* icon or select *File/New* to create a new Code List.



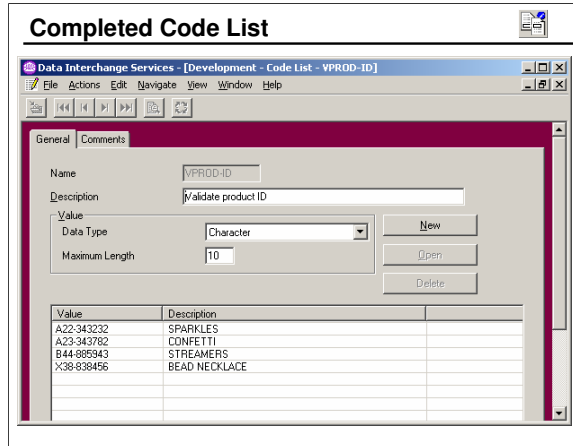
When you create a code list, the Entry Description is optional.



First enter a name for the Code List. The name may be up to 8 characters long. Then identify a data type (Character or Real) and length for the values. Data types available are *Character* or *Real*. *Real* is used only when numeric comparisons are required. Click the *New* button to begin adding entries.



For each table entry, enter a Value to be included in the list. Click the *Insert* button to insert additional entries or click *OK* and select *New* for each new entry.



The completed Code List is sorted by ascending value. The user can change the sort by clicking on the column headers. The sort can be on either column in ascending or descending order. The Description is not used in processing.

Unit Summary



- Translation Tables provide for the conversion of specific source values to specific target values during translation
- The “Source” column normally contains the value searched and the “Target” column provides the result
- Duplicate entries are allowed in the target values in translation tables
- New Translation Tables may be imported or created using the editor with the Mapping Functional Area
- Code Lists provide for the validation of values of source EDI documents or target EDI documents
- Code lists can also be used in mapping to see if any value is contained within a list of values
- Standard code lists are provided for ID type EDI elements
- New Code Lists may be imported or created using the Code List Editor from the Mapping Functional Area or EDI Functional Area

We addressed each of these objectives in this unit.