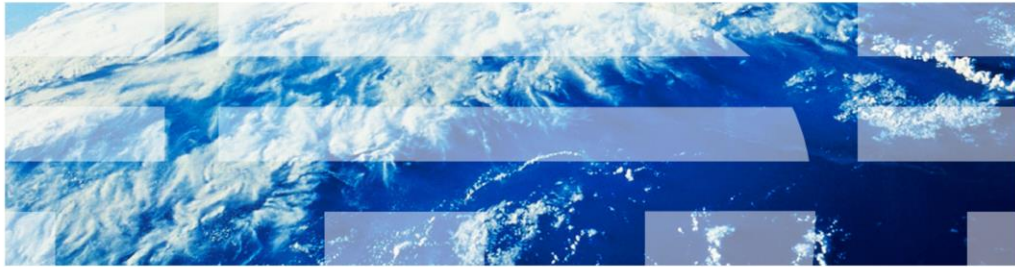


IBM Worklight V5.0.5

Upgrading an existing installation



© 2013 IBM Corporation

This presentation describes the installer included in IBM Worklight version 5.0.5 and provides an overview of the process for upgrading your existing Worklight installation from an earlier version to version 5.0.5.

Upgrading Worklight Studio using the Eclipse update-site

The Eclipse update-site can be used to upgrade Worklight Studio on Windows®, Linux®, and MacOS.

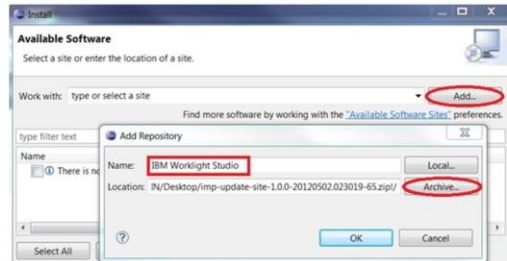
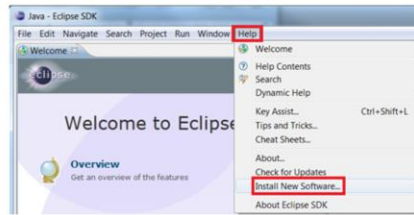
Prerequisites

- Get p2 update site .zip file from the IBM External Delivery Site

To use the Eclipse update-site to upgrade Worklight Studio, you need to have the required versions of Eclipse and JRE installed. Then download the p2 update site .zip file on the IBM External Delivery Site.

Upgrading Worklight Studio (1 of 4)

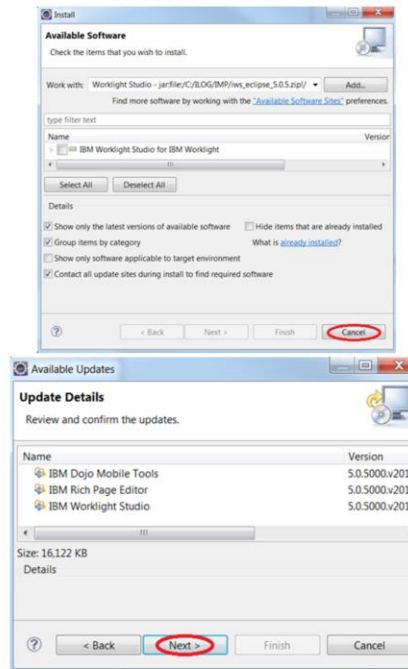
1. Open Eclipse
2. In the Help menu, select "Install New Software..."
3. In the Install window, click the "Add..." button
4. In the Add Repository window, use the "Archive..." button to locate the .zip image and then enter a name, for example "IBM Worklight Studio"
5. Click "OK" to close the Add Repository window



To upgrade Worklight Studio, the first step is to enter the location of the .zip image you downloaded. This step is needed because the .zip file for version 5.0.5 has a different name than earlier versions.

Upgrading Worklight Studio (2 of 4)

6. Click "Cancel" in the Install window
7. In the "Help" menu, select "Check for Updates"
8. Click "Next" on the update panel
9. Verify the items to be updated and click "Next"



5

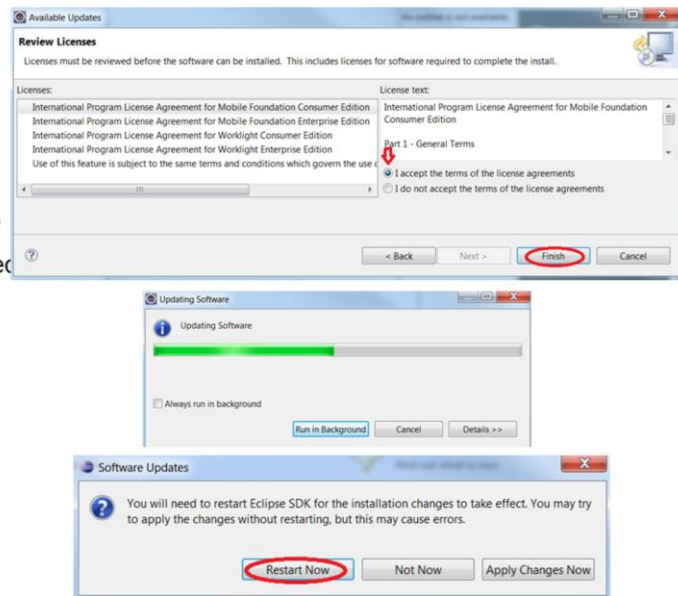
Upgrading an existing installation

© 2013 IBM Corporation

Cancel the installation because you want to upgrade, not perform a fresh installation. Then, in the Help menu, select "Check for Updates". While going through the panels using the "Next" button, you can always use the "Back" button to change your earlier choices.

Upgrading Worklight Studio (3 of 4)

10. Click "Next" again to go to the Review Licenses panel
11. Select "I accept..." and click the "Finish" button
12. The upgrade takes some time
13. Restart Eclipse when prompted



6

Upgrading an existing installation

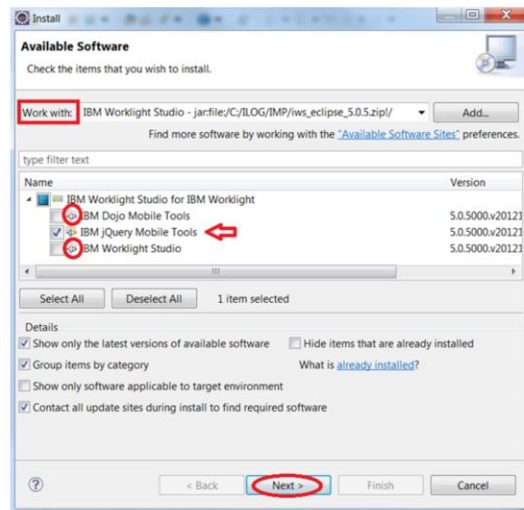
© 2013 IBM Corporation

On the Review Licenses panel, you should read each license in the list before accepting all of them at the same time. When you click Finish, the upgrade starts. When the upgrade completes, you are prompted to restart Eclipse.

Upgrading Worklight Studio (4 of 4)

Install new feature "IBM jQuery Mobile Tools"

14. In the "Help" menu, select "Install New Software..."
15. In the "Work with" field, select the newly downloaded zip and select the feature
16. Click "Next" to proceed
17. Verify the item to install and click "Next"
18. On the Review Licenses panel, select "I accept" and click "Finish"
19. The installation will take some time
20. Restart Eclipse when prompted



At this point in the upgrade process, you have updated the features that were part of your existing installation. The final step in the upgrade is to install a new feature called "IBM jQuery Mobile Tools" that is available in Worklight version 5.0.5. In the Available Software panel, the features you have already installed are visible but unavailable. The IBM jQuery Mobile Tools feature is available because it is not yet installed. Select this feature and proceed with its installation.

Upgrading with Installation Manager ***(Passport Advantage integration)***

The next section of this presentation is dedicated to upgrading Worklight with Installation Manager, which can be used on Windows or UNIX®, but not Macintosh.

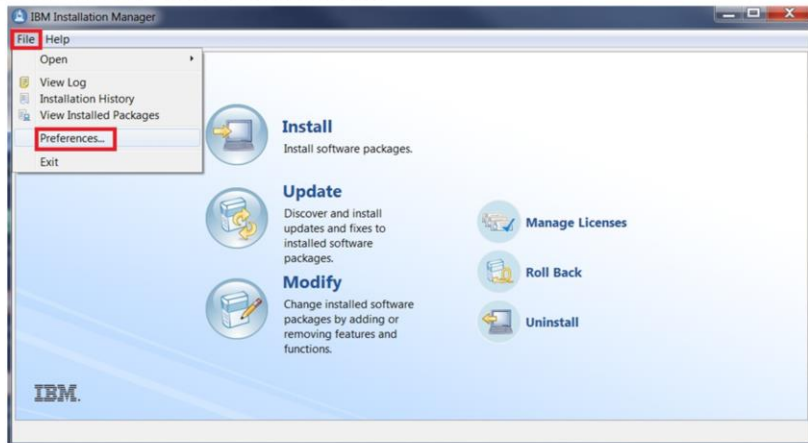
Prerequisites

- IBM Installation Manager V1.6

If you do not have IBM Installation Manager on your machine, you need to install it.

Entering your credentials (1 of 2)

1. Launch IBM Installation Manager
2. In the “File” menu, select “Preferences...”



10

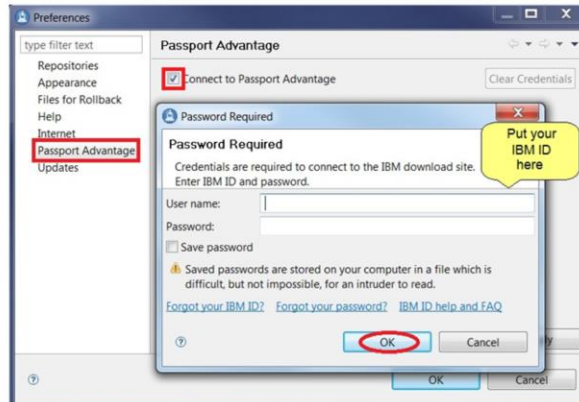
Upgrading an existing installation

© 2013 IBM Corporation

The first step, when upgrading Worklight with IBM Installation Manager, is to enter your credentials for the product you purchased. On the main window of IBM Installation Manager, open the “File” menu and click “Preferences...”. This will open the Preferences window.

Entering your credentials (2 of 2)

3. In the "Preferences" window, select Passport Advantage® from the list on the left side
4. On the right side, check the "Connect to Passport Advantage" box
5. Enter your credentials in the popup window and click "OK"



11

Upgrading an existing installation

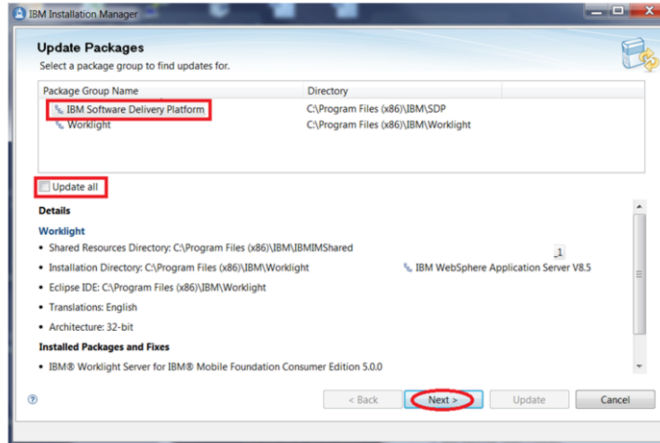
© 2013 IBM Corporation

In the Preferences window, select the Passport Advantage item from left side. Then, on the right side, check the "Connect to Passport Advantage" box. This will open a new window prompting you to enter your IBM ID and password. If you need help with your IBM credentials, see the links at the bottom of the window. Then click "OK". If the Preferences window is still open, click "OK" to close it.

Updating Worklight Studio (1 of 7)



1. Click “Update” on main window



2. Select the package to update or check ‘Update all’ and click “Next”

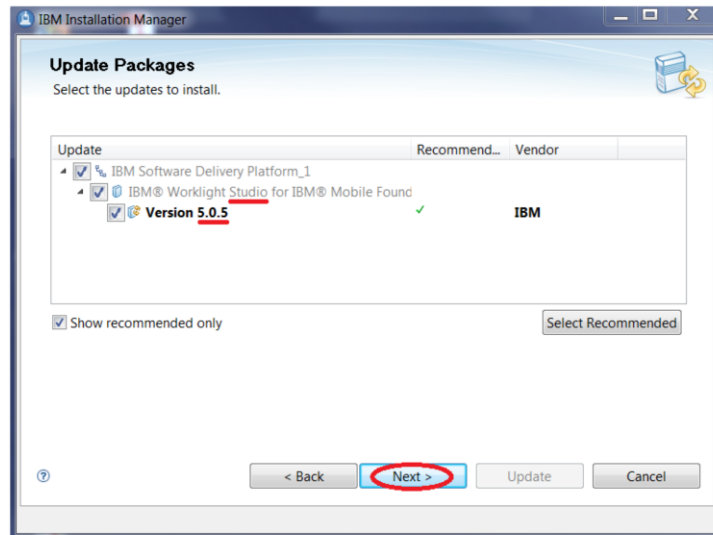
12

Upgrading an existing installation

© 2013 IBM Corporation

On the main window of IBM Installation Manager, click the Update button. This launches the installation wizard, which displays the offering packages you have access to. You can select one package; or you can select all packages using the ‘Update all’ check box. In this example, Worklight Studio – IBM Software Delivery Platform is selected. Click “Next”.

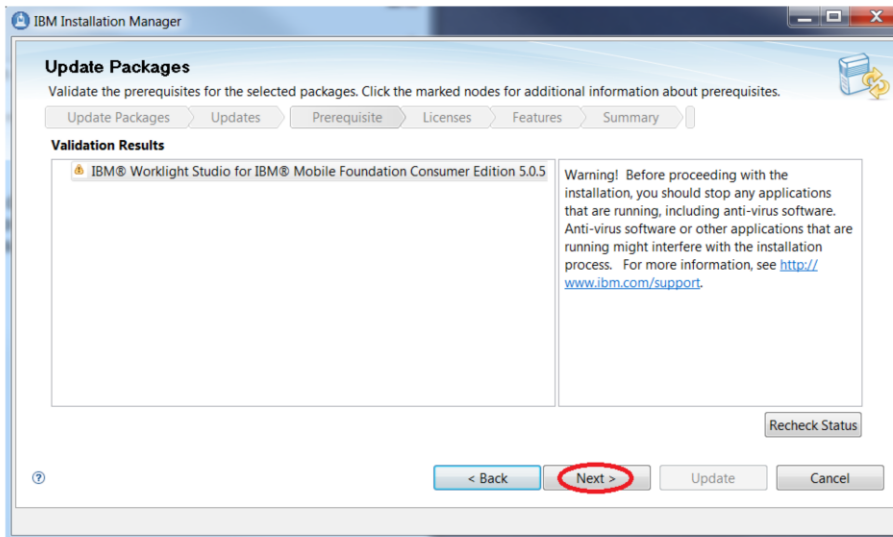
Updating Worklight Studio (2 of 7)



3. Click "Next"

Review the information provided. Make sure it is the correct edition of Worklight. Click Next.

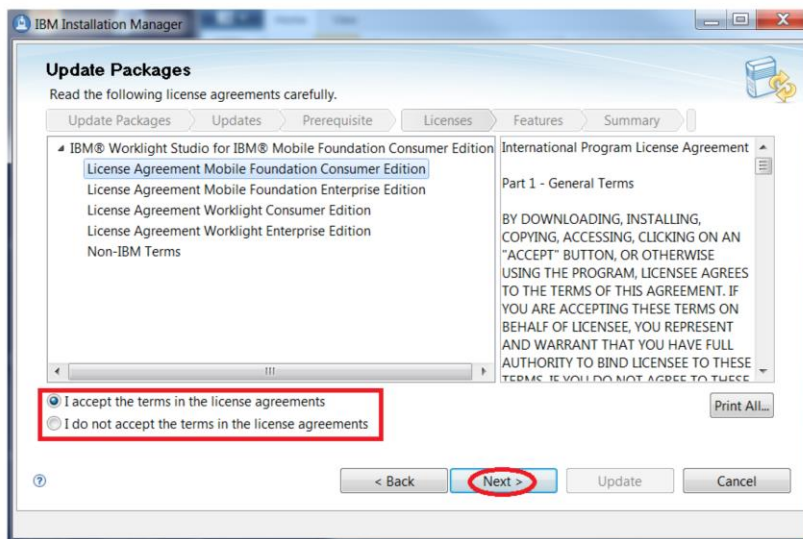
Updating Worklight Studio (3 of 7)



4. Click "Next"

Read this information and click "Next".

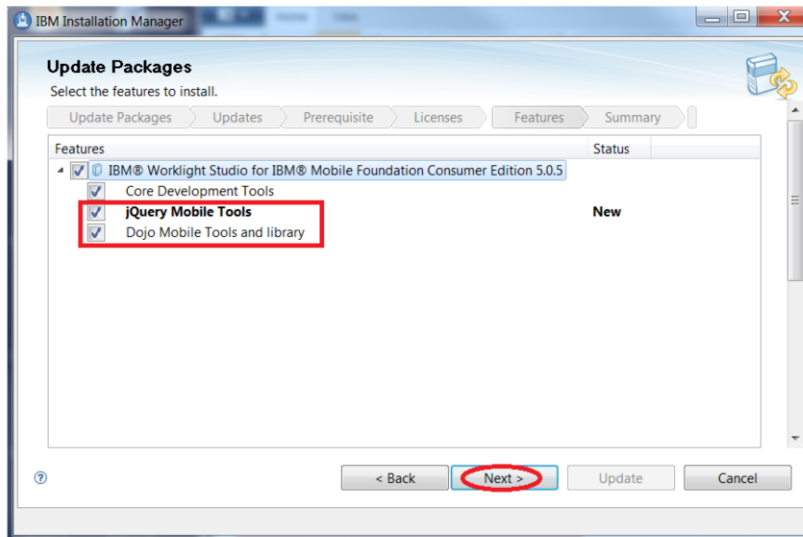
Updating Worklight Studio (4 of 7)



5. Click "Next"

This panel of the installation wizard shows the license agreements. Read the license agreement for the edition of Worklight you are installing. Also read Non-IBM Terms. Then select the "I accept..." radio button and click Next.

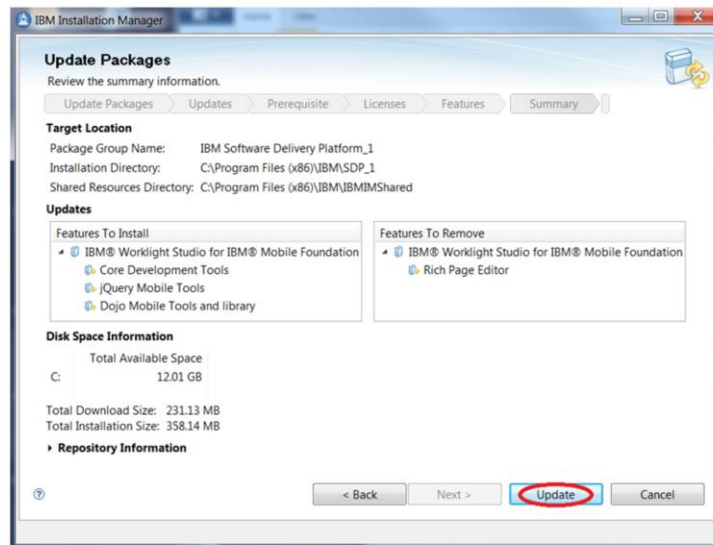
Updating Worklight Studio (5 of 7)



6. Click "Next"

This panel allows you to select the features that you want to install. Core Development Tools is required and cannot be cleared. jQuery Mobile Tools is a new feature in Worklight version 5.0.5. In this example, all features are selected. Click Next.

Updating Worklight Studio (6 of 7)



7. Click "Update"

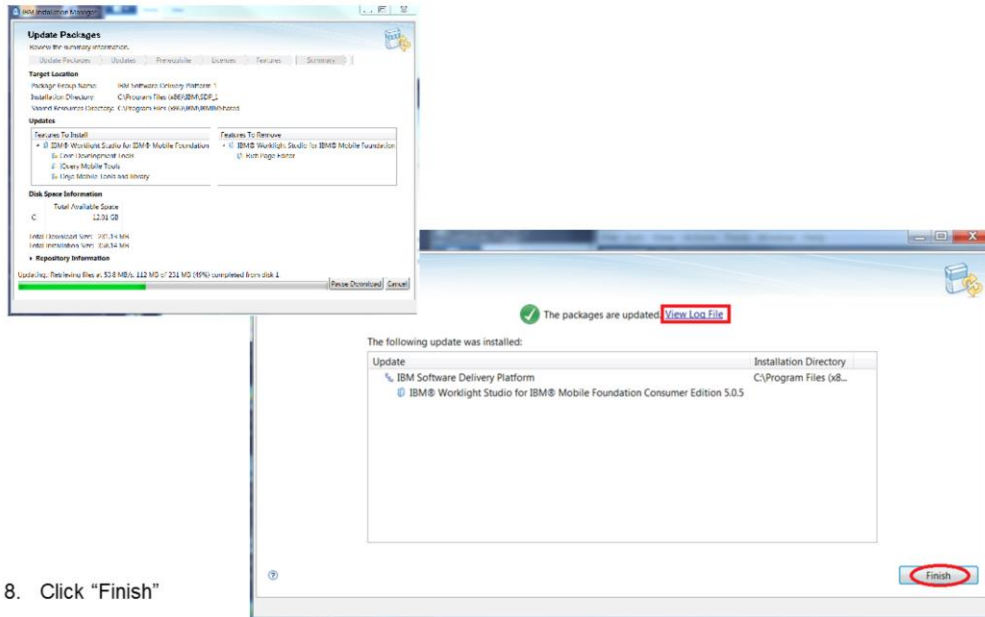
17

Upgrading an existing installation

© 2013 IBM Corporation

Review the information in the Update summary panel, especially the Features To Install. Then click Update.

Updating Worklight Studio (7 of 7)



8. Click "Finish"

18

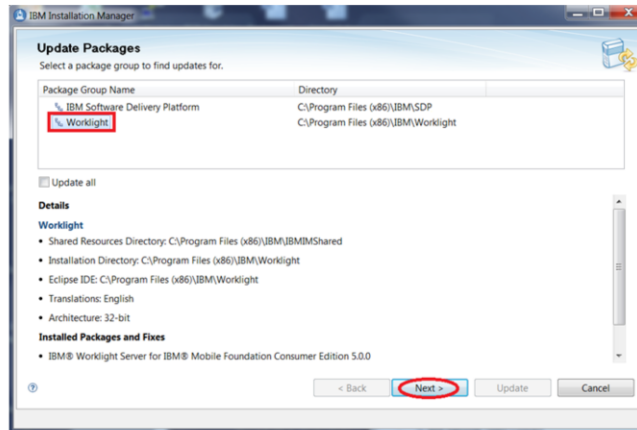
Upgrading an existing installation

© 2013 IBM Corporation

During the update, a progress bar is displayed. You can pause or cancel the update. When the update completes, the resulting status is displayed at the top of the panel. You can use the View Log File link to view the update log file. Click Finish.

Starting the update of Worklight Server (1 of 4)

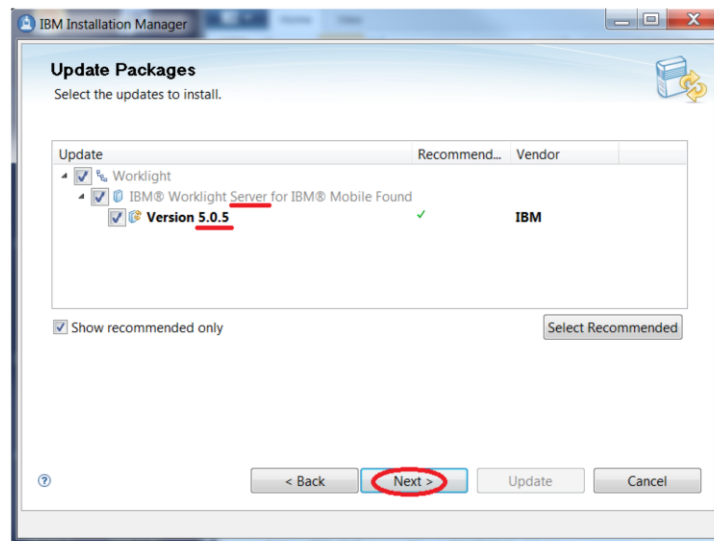
1. Click "Update" in main window



2. Select package to update or check 'Update all' and click "Next"

The next step is to update Worklight Server. The process is very similar to the one you just followed to update Worklight Studio. On the main window of IBM Installation Manager, click the Update button. This time, select the Worklight package. Then click "Next".

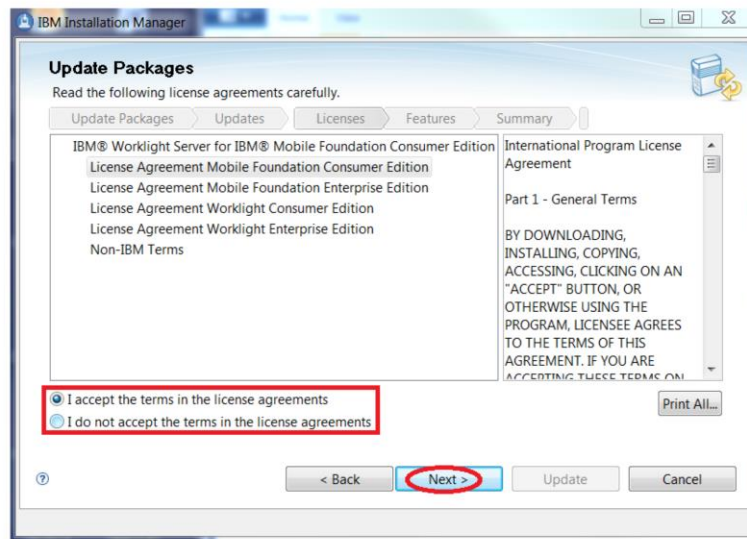
Starting the update of Worklight Server (2 of 4)



- Click "Next"

Review the information provided, especially the edition, and click Next.

Starting the update of Worklight Server (3 of 4)



- Click "Next"

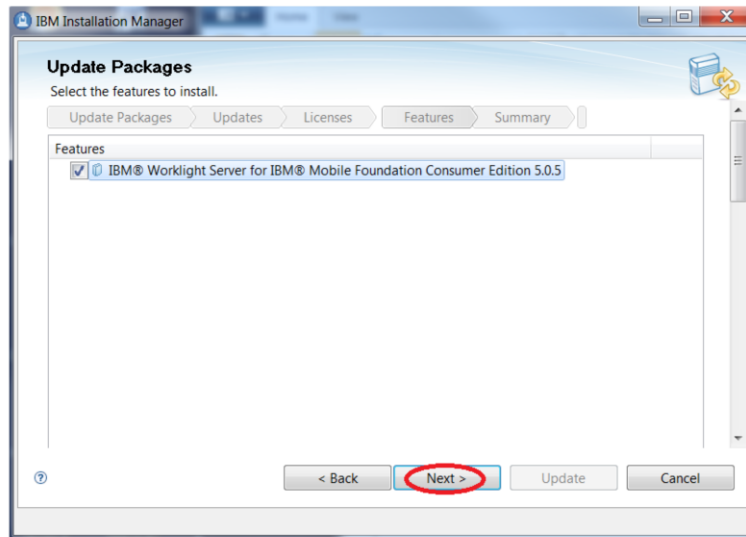
21

Upgrading an existing installation

© 2013 IBM Corporation

Read the license agreement for your edition and Non-IBM Terms. Select the "I accept..." radio button and click Next.

Starting the update of Worklight Server (4 of 4)



- Click "Next"

22

Upgrading an existing installation

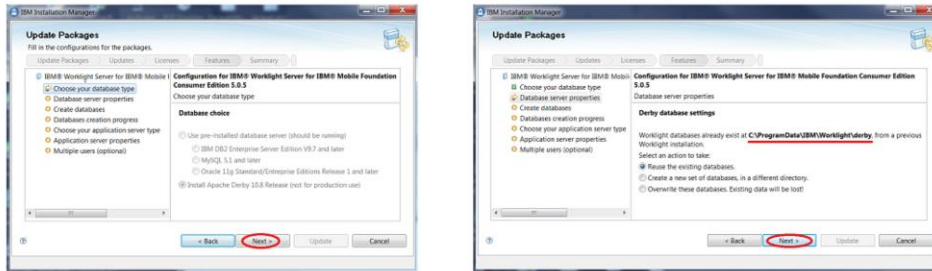
© 2013 IBM Corporation

Verify that the correct feature is selected and click Next.

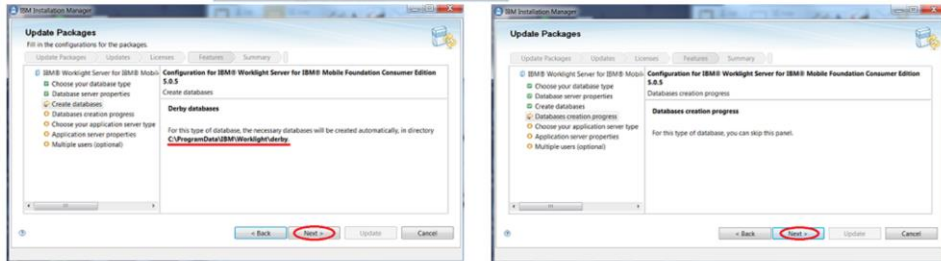
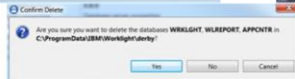
The next few panels pertain to database updates. Depending on which database is installed on your machine, the panels are different or even disabled. Also, you might see some panels not shown in this presentation.

Upgrading Derby databases

- Derby initially installed



– Confirm deletion



23

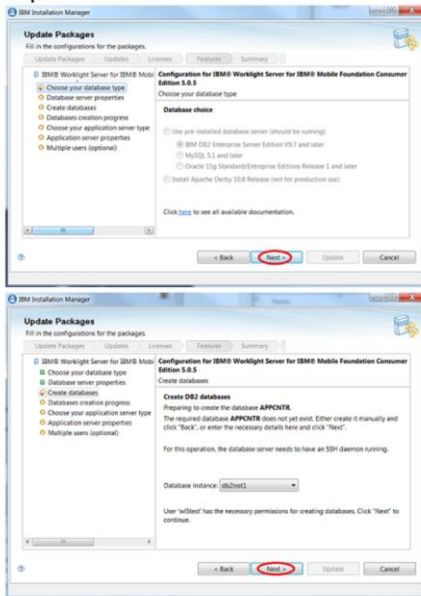
Upgrading an existing installation

© 2013 IBM Corporation

If your existing installation of Worklight Server is using Derby, you will be asked to choose one of the following three options. The first option is to reuse the existing databases. If you choose this option, the existing databases will be updated. The second option is to create new databases in a new repository. And the third option is to delete the existing databases and re-create them in same directory. If you choose this option, you will be prompted to confirm your choice.

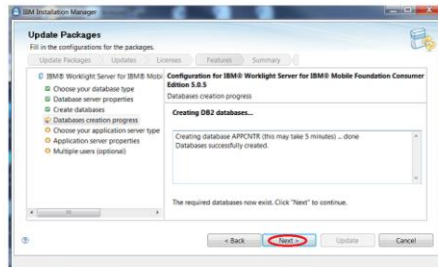
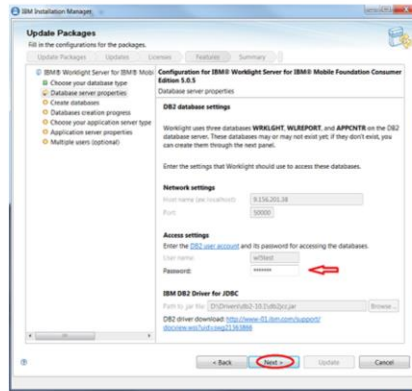
Upgrading DB2 databases

- DB2® pre-installed



24

Upgrading an existing installation

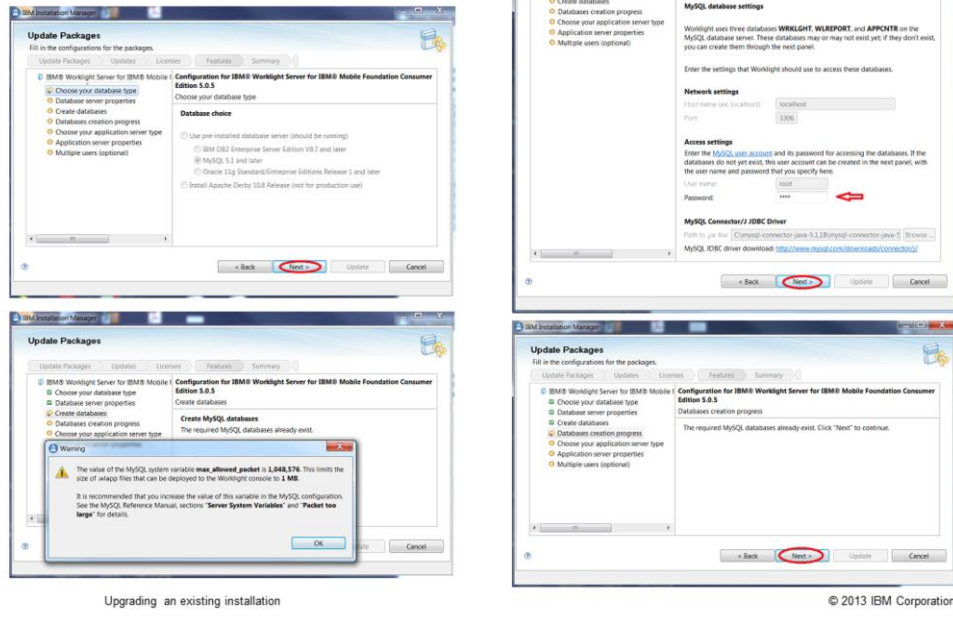


© 2013 IBM Corporation

If your existing installation of Worklight Server is using DB2, you are offered the opportunity to change the password Worklight uses to access DB2, since it might have changed. Once the installation wizard has finished creating the APPCNTR database, the last Next button will become available. Click it to proceed.

Upgrading MySQL databases

- MySQL pre-installed (since version 5.0.0.3)



25

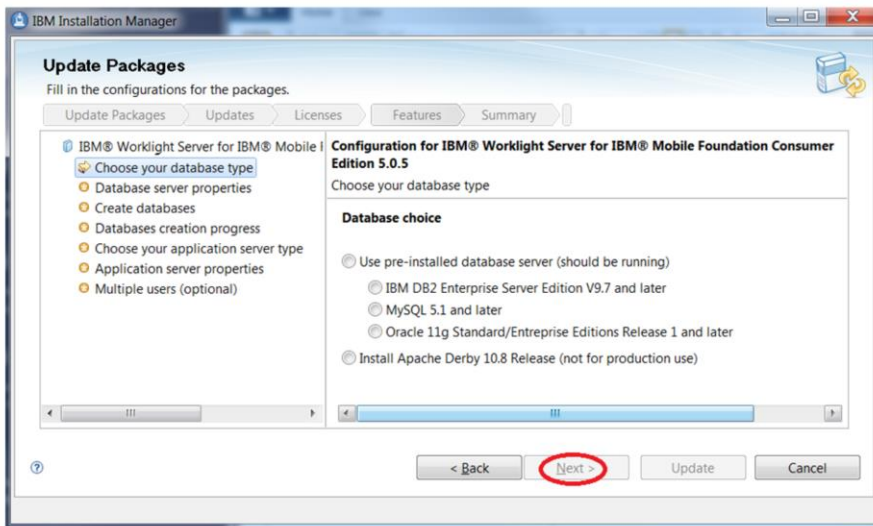
Upgrading an existing installation

© 2013 IBM Corporation

If your existing installation of Worklight Server is using MySQL, you are offered the opportunity to change the password Worklight uses to access MySQL. Also, you might see a warning message recommending that you increase the value for a particular MySQL variable in order to have a better experience with the Worklight product. If you get one of these messages, you will also get a browser window with a page that explains the variable.

Changing your database repository (1 of 7)

- Another database



– Click “Next”

26

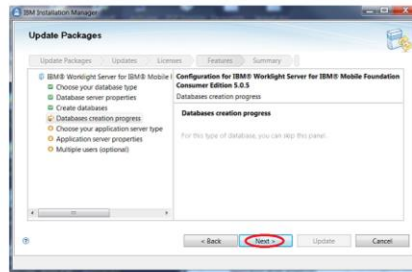
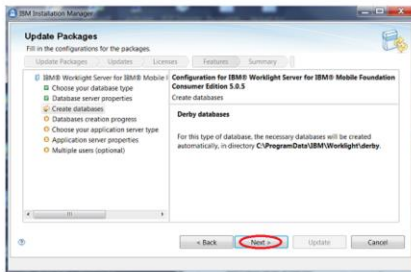
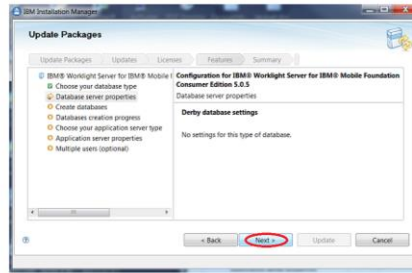
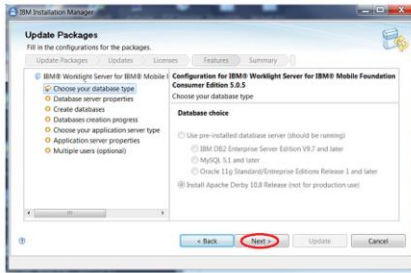
Upgrading an existing installation

© 2013 IBM Corporation

If your existing installation of Worklight Server is using different type of database, then, as part of this upgrade, you have to change databases. You can choose to use an existing database, as long as it is of one of the types listed on this panel. Or you can install Derby. Once you make a section click Next.

Changing your database repository (2 of 7)

– Derby



27

Upgrading an existing installation

© 2013 IBM Corporation

If you choose to install Derby, no settings are required. Click Next four times.

Changing your database repository (3 of 7)

– MySQL

IBM Installation Manager

Update Packages

Fill in the configurations for the packages.

Update Packages Updates Licenses Features Summary

IBM® Worklight Server for IBM® Mobile Foundation Consumer Edition 5.0.5

Database server properties

MySQL database settings

Worklight uses three databases **WRKLGHT**, **WLREPORT**, and **APPCNTR** on the MySQL database server. These databases may or may not exist yet; if they don't exist, you can create them through the next panel.

Enter the settings that Worklight should use to access these databases.

Network settings

Host name (ex: localhost):

Port:

Access settings

Enter the **MySQL user account** and its password for accessing the databases. If the databases do not yet exist, this user account can be created in the next panel, with the user name and password that you specify here.

User name:

Password:

MySQL Connector/J JDBC Driver

Path to jar file:

MySQL JDBC driver download: <http://www.mysql.com/downloads/connector/j/>

< Back **Next** > Update Cancel

– Provide required information and click “Next”

28

Upgrading an existing installation

© 2013 IBM Corporation

If you select an existing database, you are required to enter the related settings. Port has a default value, but you can change it if necessary. If you need help filling in the fields, see the links provided.

Changing your database repository (4 of 7)

– DB2	– Oracle
<p>DB2 database settings</p> <p>Worklight uses three databases WRKLGHT, WLREPORT, and APPCNTR on the DB2 database server. These databases may or may not exist yet; if they don't exist, you can create them through the next panel.</p> <p>Enter the settings that Worklight should use to access these databases.</p> <p>Network settings</p> <p>Host name (ex: localhost): <input type="text"/></p> <p>Port: <input type="text" value="50000"/></p> <p>Access settings</p> <p>Enter the DB2 user account and its password for accessing the databases.</p> <p>User name: <input type="text"/></p> <p>Password: <input type="password"/></p> <p>IBM DB2 Driver for JDBC</p> <p>Path to jar file: <input type="text"/> <input type="button" value="Browse ..."/></p> <p>DB2 driver download: http://www-01.ibm.com/support/docview.wss?uid=swg21363866</p>	<p>Oracle database settings</p> <p>Worklight uses three databases WRKLGHT, WLREPORT, and APPCNTR on the Oracle database server. These databases may or may not exist yet; if they don't exist, you can create them through the next panel.</p> <p>Enter the settings that Worklight should use to access these databases.</p> <p>Network settings</p> <p>Host name (ex: localhost): <input type="text"/></p> <p>Port: <input type="text" value="1521"/></p> <p>Access settings</p> <p>Enter the Oracle user account and its password for accessing the databases. If the databases do not yet exist, this user account can be created for each database in the next panel, with the user name and password that you specify here.</p> <p>User name: <input type="text"/></p> <p>Password: <input type="password"/></p> <p>Oracle 11g JDBC Driver</p> <p>Path to jar file: <input type="text"/> <input type="button" value="Browse ..."/></p> <p>Oracle JDBC driver download: http://www.oracle.com/technetwork/database/features/jdbc/index-091264.html</p>

29

Upgrading an existing installation

© 2013 IBM Corporation

Depending on which type of existing database you choose, the required information is a bit different. Once you fill in the fields, the Next button becomes enabled. Click it to proceed.

Changing your database repository (5 of 7)

- Databases exist

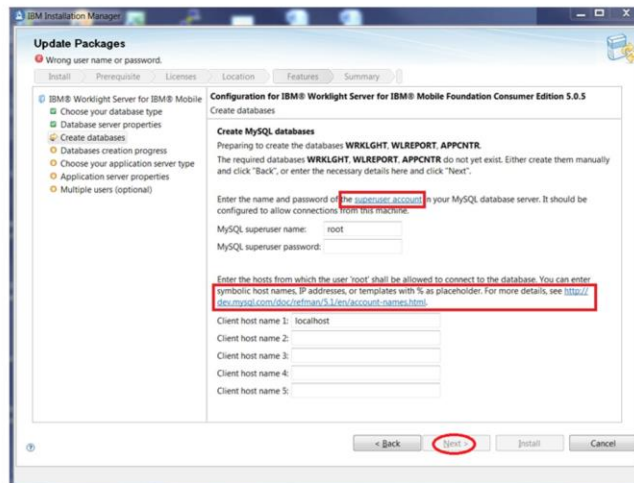
Create MySQL databases

The required MySQL databases already exist.

Create DB2 databases

The required DB2 databases already exist.

- Create MySQL databases



- Provide required information and click "Next"

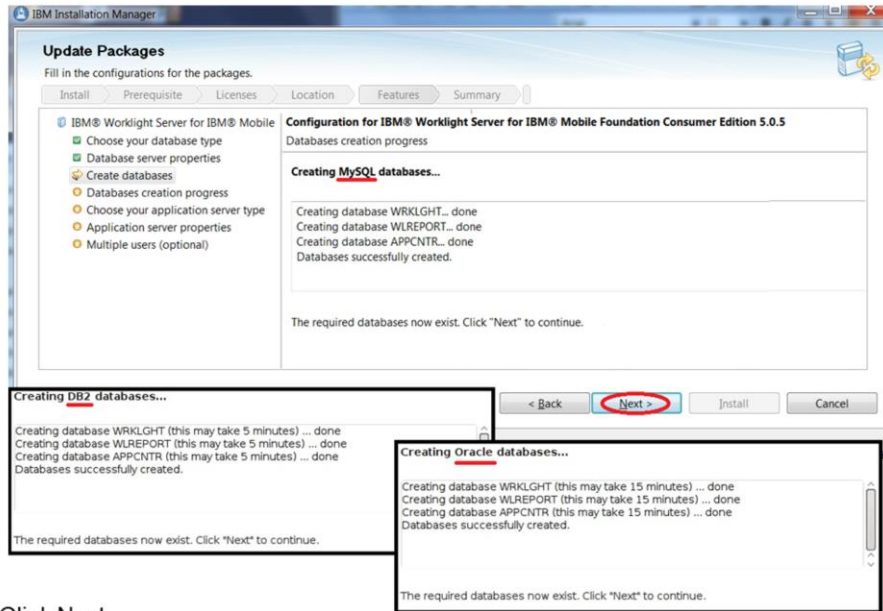
Before this panel is displayed, the installer checks whether or not the databases already exist on your machine. If the databases already exist, then just click Next, twice. If the databases do not exist, then you have two choices. You can let the installer create them for you, by filling in the fields on this panel and clicking Next. Or you can create the databases manually. If you choose to create the databases manually, after creating the databases, you need to use the Back button to go to the previous panel and then click Next again. The installer will behave as if the databases existed from the beginning.

Changing your database repository (6 of 7)

– Create DB2 databases	– Create Oracle databases
<p>Create DB2 databases Preparing to create the databases WRKLGHT, WLREPORT, APPCNTR. The required databases WRKLGHT, WLREPORT, APPCNTR do not yet exist. Either create them manually and click "Back", or enter the necessary details here and click "Next".</p> <p>For this operation, the database server needs to have an SSH daemon running.</p> <p>Database instance: <input type="text" value="db2inst1"/></p> <p>The specified user 'wstest' does not have the permissions to create the databases. Enter the name and password of a user account on the database server that has the DB2 privilege SYSADM or SYSCTRL.</p> <p>Admin user name: <input type="text"/></p> <p>Admin user password: <input type="password"/></p>	<p>Create Oracle databases Preparing to create the databases WRKLGHT, WLREPORT, APPCNTR. The required databases WRKLGHT, WLREPORT, APPCNTR do not yet exist. Either create them manually and click "Back", or enter the necessary details here and click "Next".</p> <p>For this operation, the database server needs to have an SSH daemon running.</p> <p>Enter the operating system login and password of the Oracle database administrator.</p> <p>Administrator login name: <input type="text" value="oracle"/></p> <p>Administrator password: <input type="password"/></p> <p>Enter passwords for the users SYS and SYSTEM of the new databases.</p> <p>Password for user SYS: <input type="password"/></p> <p>Confirm password for user SYS: <input type="password"/></p> <p>Password for user SYSTEM: <input type="password"/></p> <p>Confirm password for user SYSTEM: <input type="password"/></p>

If you choose to let the installer create the databases for you, then, depending on the type of database repository installed on your machine, the required information is a bit different. Once you fill in the fields, the Next button becomes enabled. Click it to proceed.

Changing your database repository (7 of 7)

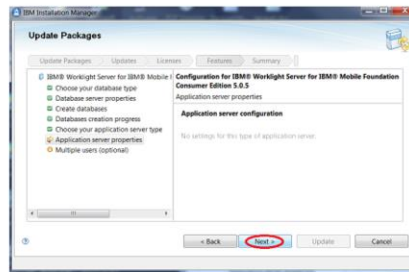
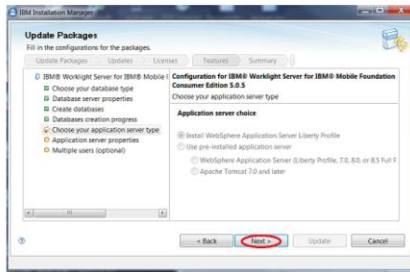


– Click Next

Once the installer finishes creating the database tables, click Next.

Application server updates - WebSphere Application Server Liberty

- WebSphere® Application Server Liberty profile initially installed



33

Upgrading an existing installation

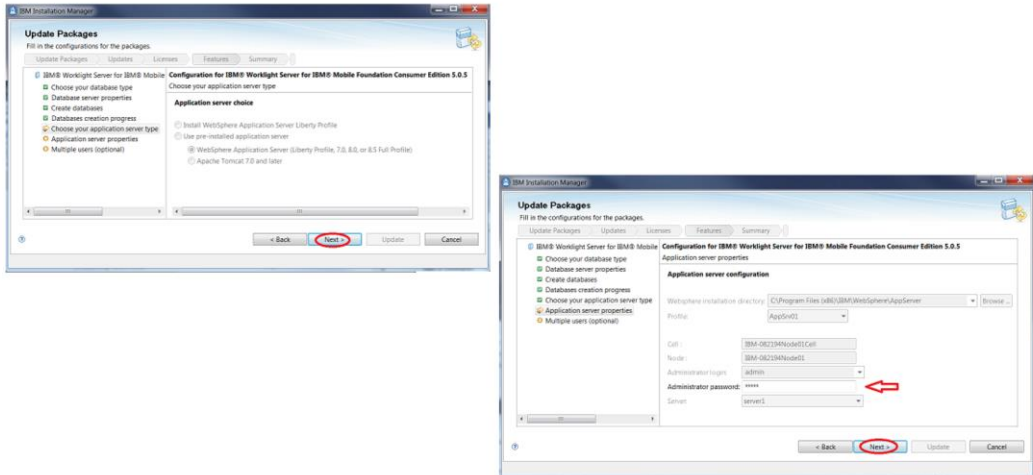
© 2013 IBM Corporation

The next panels in the installer are related to application server updates. Depending on which application server your existing Worklight installation uses, these panels are different or even disabled. The installer for version 5.0.5 contains some new panels that were not in earlier versions.

If your existing Worklight installation uses WebSphere Application Server Liberty Profile as its application server, you just click the Next button, twice.

Application server updates – WebSphere Application Server

- WebSphere Application Server pre-installed (since version 5.0.0.3)



34

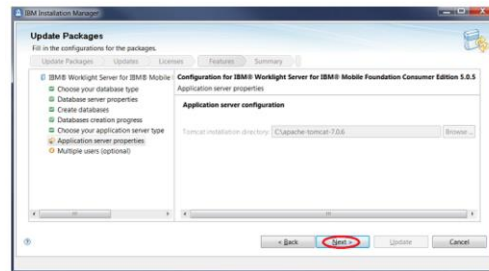
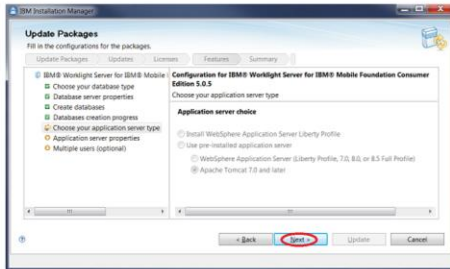
Upgrading an existing installation

© 2013 IBM Corporation

If your existing installation of Worklight uses WebSphere Application Server, you have the opportunity to change the password that Worklight uses to access it. Then click Next, twice.

Application server updates - Tomcat

- Tomcat pre-installed (since version 5.0.0.3)



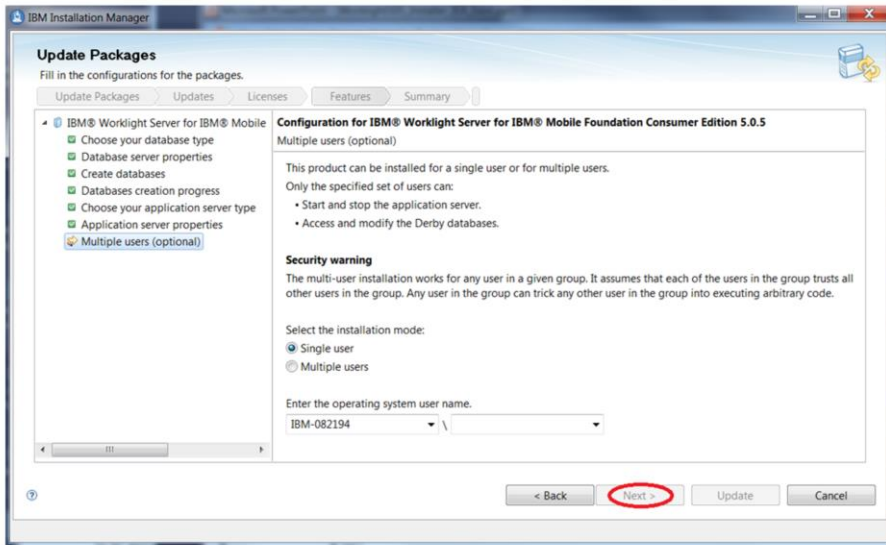
35

Upgrading an existing installation

© 2013 IBM Corporation

If your existing Worklight installation uses Tomcat, you just click Next, twice.

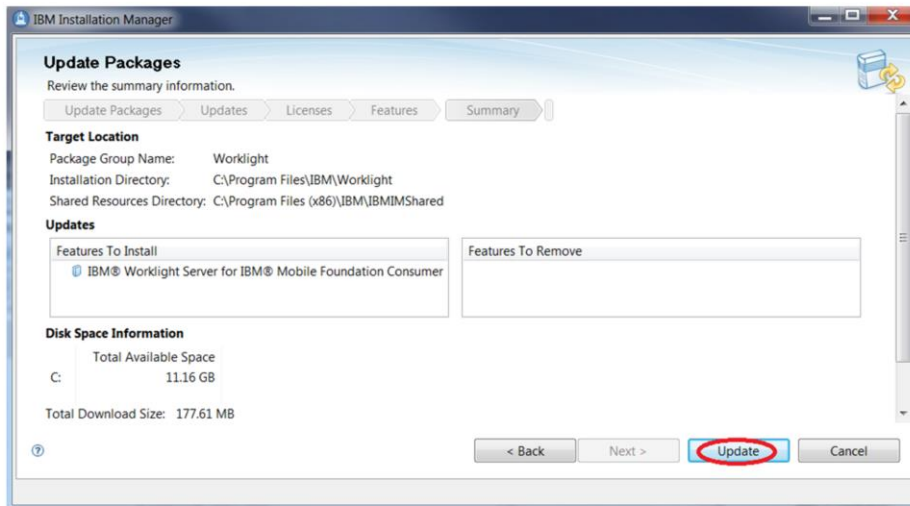
Single or multiple users



- Choose your installation mode, provide required information and click Next

This panel lets you choose whether you want Worklight to be installed for a single user or for multiple users. Read the information on this panel, especially if a security warning is displayed. The information is slightly different depending on your operating system and the type of application server you are using.

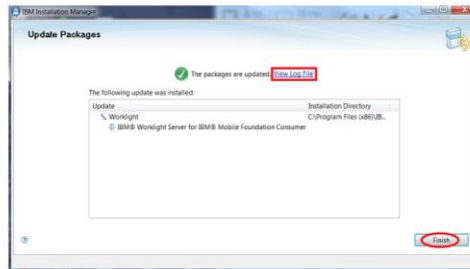
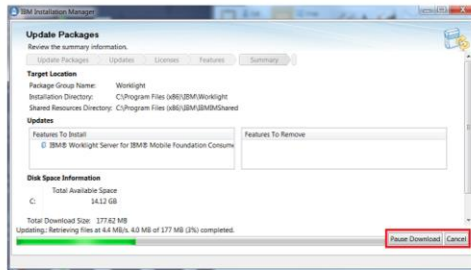
Finishing the update of Worklight Server (1 of 2)



- Click "Update"

Review the information on this panel, especially the Feature To Install. Click Update.

Finishing the update of Worklight Server (2 of 2)



- Click "Finish"

38

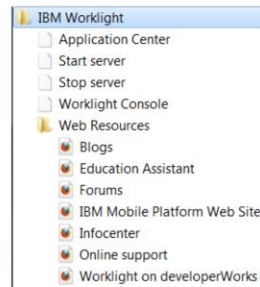
Upgrading an existing installation

© 2013 IBM Corporation

During the update, a progress bar is displayed. You can pause or cancel the update. When the update completes, the installer displays the resulting status of the update at the top of the panel. You can view the update log file by clicking the View Log File link. Click Finish.

Shortcuts on Windows and Linux

- Worklight Server update creates shortcuts in Start menu for Windows



and Applications for Linux



The Worklight installer creates several shortcuts in the Start menu on Windows platforms and in Applications on Linux platforms. These shortcuts allow you to access all documentation, and launch Application Center and the Worklight console.

Uninstalling

The process for uninstalling Worklight V5.0.5 is covered in the IBM Education Assistant module about performing a fresh installation. Since you upgraded to version 5.0.5 from a previous version of Worklight, you will see one difference from the panels shown in that module. The Eclipse update site will have one additional feature, the IBM Rich Page Editor, which comes from versions of Worklight before version 5.0.5.

Section

Summary

In summary . . .

Summary

- Update Worklight Studio
 - Eclipse update-site
 - IBM Installation Manager
- Update Worklight Server
 - IBM Installation Manager

You can upgrade Worklight Studio and Server to version 5.0.5 using IBM Installation Manager, which is supported by many IBM products. It provides a consistent user installation and upgrade experience. However, it is not available for Macintosh. IBM Worklight Studio can also be upgraded as an Eclipse plug-in from an update-site. This does work on Mac platforms.

References

- IBM Installation Manager information center
 - <http://pic.dhe.ibm.com/infocenter/install/v1r6/index.jsp>
- IBM Worklight V5.0.5 documentation
 - <http://www.ibm.com/mobile-docs>
- Eclipse SDK V3.6.2
 - <http://www.eclipse.org/downloads/packages/eclipse-ide-java-ee-developers/heliossr2>
- Eclipse SDK V3.7.2
 - <http://www.eclipse.org/downloads/packages/eclipse-ide-java-ee-developers/indigosr2>

This slide contains links to the IBM Installation Manager information center and IBM Worklight version 5.0.5 documentation.

Trademarks, disclaimer, and copyright information

IBM, the IBM logo, ibm.com, DB2, Passport Advantage, and WebSphere are trademarks or registered trademarks of International Business Machines Corp., registered in many jurisdictions worldwide. Other product and service names might be trademarks of IBM or other companies. A current list of other IBM trademarks is available on the web at "[Copyright and trademark information](http://www.ibm.com/legal/copytrade.shtml)" at <http://www.ibm.com/legal/copytrade.shtml>

Linux is a registered trademark of Linus Torvalds in the United States, other countries, or both.

Windows, and the Windows logo are registered trademarks of Microsoft Corporation in the United States, other countries, or both.

UNIX is a registered trademark of The Open Group in the United States and other countries.

Other company, product, or service names may be trademarks or service marks of others.

THE INFORMATION CONTAINED IN THIS PRESENTATION IS PROVIDED FOR INFORMATIONAL PURPOSES ONLY. WHILE EFFORTS WERE MADE TO VERIFY THE COMPLETENESS AND ACCURACY OF THE INFORMATION CONTAINED IN THIS PRESENTATION, IT IS PROVIDED "AS IS" WITHOUT WARRANTY OF ANY KIND, EXPRESS OR IMPLIED. IN ADDITION, THIS INFORMATION IS BASED ON IBM'S CURRENT PRODUCT PLANS AND STRATEGY, WHICH ARE SUBJECT TO CHANGE BY IBM WITHOUT NOTICE. IBM SHALL NOT BE RESPONSIBLE FOR ANY DAMAGES ARISING OUT OF THE USE OF, OR OTHERWISE RELATED TO, THIS PRESENTATION OR ANY OTHER DOCUMENTATION. NOTHING CONTAINED IN THIS PRESENTATION IS INTENDED TO, NOR SHALL HAVE THE EFFECT OF, CREATING ANY WARRANTIES OR REPRESENTATIONS FROM IBM (OR ITS SUPPLIERS OR LICENSORS), OR ALTERING THE TERMS AND CONDITIONS OF ANY AGREEMENT OR LICENSE GOVERNING THE USE OF IBM PRODUCTS OR SOFTWARE.

© Copyright International Business Machines Corporation 2013. All rights reserved.