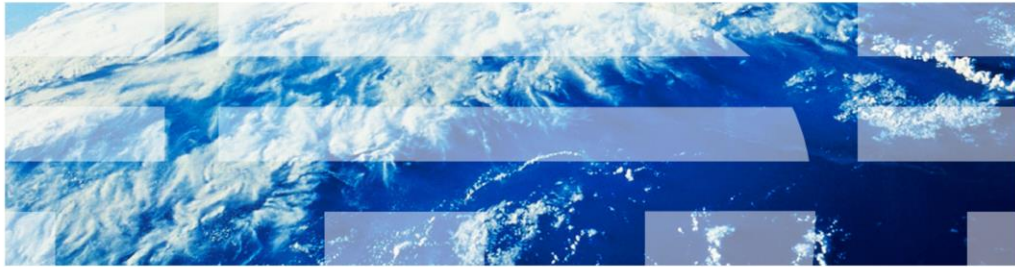


IBM Worklight V5.0.5

Installation



© 2013 IBM Corporation

This presentation describes support for the installer included in IBM Worklight V5.0.5. and focuses on an overview of the installation process for new users. Another presentation covers upgrading from a previous version.

Installation overview

- IBM Worklight V5.0.5 install package consists of these programs
 - Worklight Server
 - Application Center installed at same time
 - Worklight Studio
 - Embedded Worklight Server
- Worklight Server and Studio can be installed using Installation Manager
 - not for Mac users
- Worklight Studio can also be installed from Eclipse update-site; for all users
- Installer does not provide any documentation, it is available on IBM site

Worklight Studio and Worklight Server can be installed separately.

Studio is a comprehensive, extensible environment that maximizes code reuse and per-device optimization.

Server is mobile-optimized middleware that provides a services layer to support back-end integration, version management, security, and unified push notification mechanisms.

Installation – at a glance (1 of 3)

Packages	Components Installed Usable pre-installed components	Type of installation available
<p style="text-align: center;">IBM Worklight, Consumer edition V5.0.5</p> <p style="text-align: center;">or</p> <p style="text-align: center;">IBM Worklight, Enterprise edition V5.0.5</p>	<p>Part of Installation</p> <ul style="list-style-type: none"> ▪ Studio <ul style="list-style-type: none"> – Embedded Worklight Server – IBM Cordova 2.2 – IBM Dojo 1.8.1 – JQuery – Development Tools – IBM Java 1.7 / Eclipse 3.6.2 (through Installation Manager only) ▪ Server <ul style="list-style-type: none"> – Apache Derby 10.8 or pre-installed IBM DB2®, MySQL or Oracle database – IBM WebSphere® Application Server Liberty 8.5.0.1 or pre-installed WebSphere Application Server or Tomcat server – console ▪ Application Center <ul style="list-style-type: none"> – Apache Derby 10.8 or pre-installed IBM DB2, MySQL or Oracle database – IBM WebSphere Application Server Liberty 8.5.0.1 or pre-installed WebSphere Application Server or Tomcat server – console 	<ul style="list-style-type: none"> ▪ Eclipse update-site (only for Studio) ▪ Installation Manager (not available for Macintosh)

3

Installation

© 2013 IBM Corporation

IBM Worklight Consumer and Enterprise both have the same content. Studio can be installed either through Installation Manager, or through an Eclipse update-site. Alternatively, Server – and the Application Center, as installed with Server – can only be installed through Installation Manager. Because Installation Manager is not available for Macintosh, you will only be able to install Studio - not Server - on that platform.

Installation – at a glance (2 of 3)

Packages	Components Installed	Type of installation available
<p>IBM Worklight, Developer edition V5.0.5</p>	<p><u>Part of Installation</u></p> <ul style="list-style-type: none"> ▪ Studio <ul style="list-style-type: none"> – Embedded Worklight Server – IBM Cordova 2.2 – IBM Dojo 1.8.1 – jQuery – Development Tools 	<ul style="list-style-type: none"> ▪ Eclipse update-site

This free edition is only for development use

IBM Worklight, Developer edition V5 is to help developers reduce testing effort, develop with confidence, and deliver innovative applications faster. This configuration is available at no charge, in order to lower the barrier for developers building applications for IBM Worklight V5. The no-cost Developer edition is supported on a best-effort basis by forum only.

Installation – at a glance (3 of 3)

Packages	Content
IBM Mobile Foundation, Consumer edition V5.0.5	<ul style="list-style-type: none"> ▪ IBM Worklight, Consumer edition V5.0.5 ▪ IBM WebSphere Cast Iron® Hypervisor Edition V6.1
IBM Mobile Foundation, Enterprise edition V5.0.5	<ul style="list-style-type: none"> ▪ IBM Worklight, Enterprise edition V5.0.5 ▪ IBM Endpoint Manager for Mobile Devices V8.2 ▪ IBM WebSphere Cast Iron Hypervisor Edition V6.1

IBM Mobile Foundation, Consumer edition V5.0.5 provides the essential elements needed for mobile development, deployment, and management in a primarily Business-to-Consumer deployment model.

IBM Mobile Foundation, Enterprise edition provides the essential elements needed for mobile development, deployment, and management in Business-to-Consumer, Business-to-Business, and Business-to-Enterprise environments.

Eclipse update-site - Studio

Eclipse update-site for Studio can be used on Windows, Linux[®], and Macintosh operating systems.

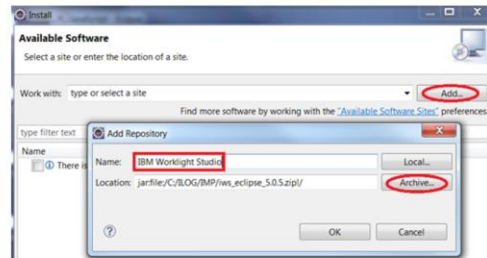
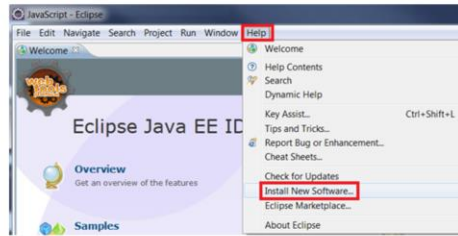
Pre-requisites

- Eclipse Classic 3.6.2, Eclipse Classic 3.7.2, Eclipse IDE for Java EE Developers 3.6.2, Eclipse IDE for Java EE Developers 3.7.2
- IBM Virtual Machine for Java Platforms 6.0 and future releases, modification levels, and fix packs
- Oracle Java SDK/JRE/JDK 6.0 Update 24 and future releases, modification levels, and fix packs
- Get p2 update site zip from the IBM External Delivery Site

To install Worklight Studio, you need to have the right versions of Eclipse and JRE pre-installed.

Installing Worklight Studio (1 of 3)

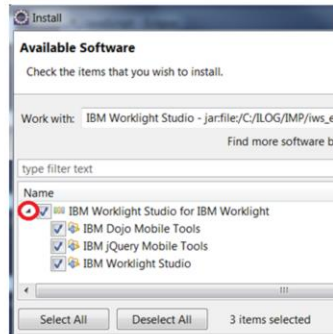
- Open Eclipse
- Select “Install New Software...” in “Help” menu
- In new window, click “Add”
- In new window, use “Archive...” to locate the zip image and enter the name you want
- Click “OK” to close repository window



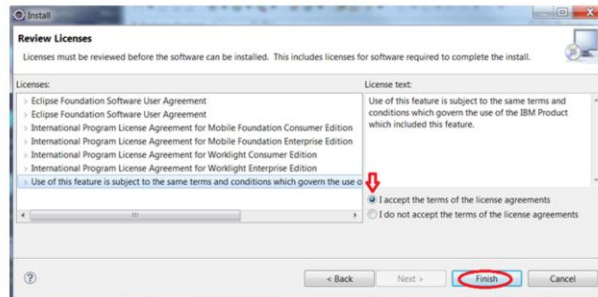
These slides show you how to install the Worklight Studio plug-in from an update-site. The first step consists in giving the location of the zip image you downloaded.

Installing Worklight Studio (2 of 3)

- In install window, click the little arrow on left side of product to expand the tree
- Select all or just what you want
- Click "Next", verify items to be installed



- Click "Next" again to see Licenses panel
- Check "I accept..." and click "Finish"



9

Installation

© 2013 IBM Corporation

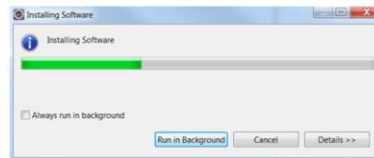
While going through the panels with "Next", you can always use "Back" to change your previous choices.

On the Licenses panel, use the tree to read each license before accepting all at the same time.

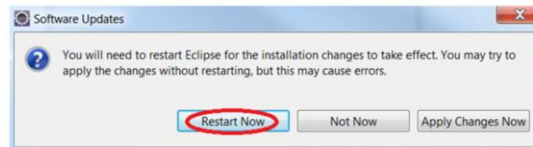
Click Finish to start the installation.

Installing Worklight Studio (3 of 3)

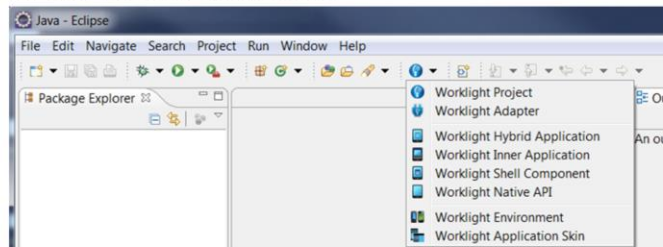
- Installation will take some time



- Restart Eclipse when asked for



- Worklight items are now available in top toolbar



10

Installation

© 2013 IBM Corporation

When the installation is finished, restart Eclipse. After the restart, you will see a new item in the toolbar to let you access all Worklight Studio items.

Installation Manager

(Passport Advantage integration)

This part is dedicated to Installation Manager, which can be used on UNIX®, or on Windows, but not on Macintosh.

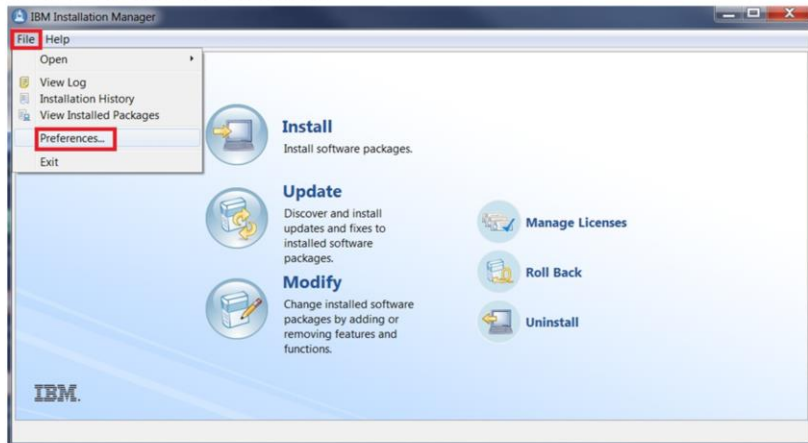
Pre-requisites

- IBM Installation Manager 1.6
- IBM Installation Manager 1.6.1 for Windows 8

If IBM Installation Manager does not already exist on your machine, you will need to install it.

Installing Worklight (1 of 24)

- Launch IBM Installation Manager
- Select “Preferences...” in File” menu



13

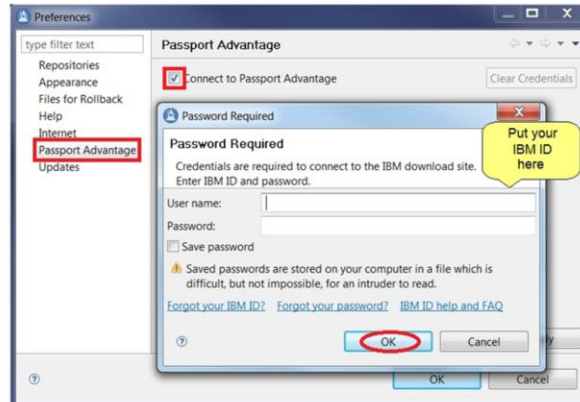
Installation

© 2013 IBM Corporation

When IBM Installation Manager is opened, you need to enter your credentials for the product you purchased. In the main window, click “File” and then Preferences. The installation screens are dynamic; in many cases, the Next button will not be enabled until you provide the required information.

Installing Worklight (2 of 24)

- In “Preferences” window, select Passport Advantage®
- Check “Connect to Passport Advantage” box
- Provide your credentials in new window and click “OK”



14

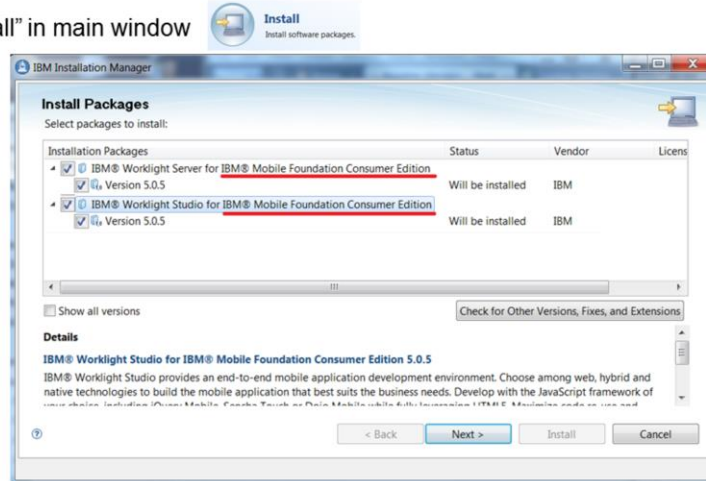
Installation

© 2013 IBM Corporation

In the Preferences window, click Passport Advantage in left frame and then check the Connection box. Provide your IBM ID and password. Some links are available at the bottom of the window to help you. Click “OK”.

Installing Worklight (3 of 24)

- Click “OK” in “Preferences” window to close it
- Click “Install” in main window

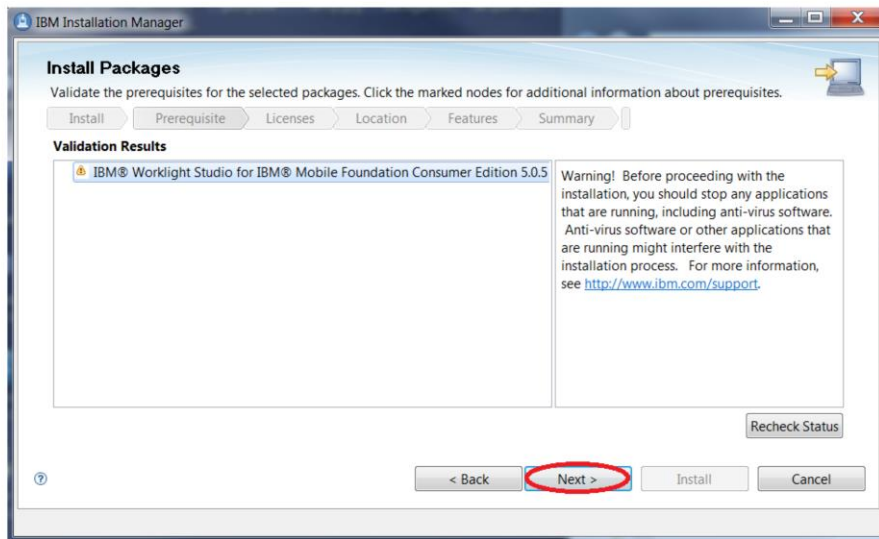


- Select packages to install and click “Next”

If the Preferences window is still open, click “OK” to close it. Click Install to start the installation wizard. Depending on your purchase, the edition displayed is different. You can select or clear items as needed. This example shows both Worklight Server and Studio.

Click “Next”

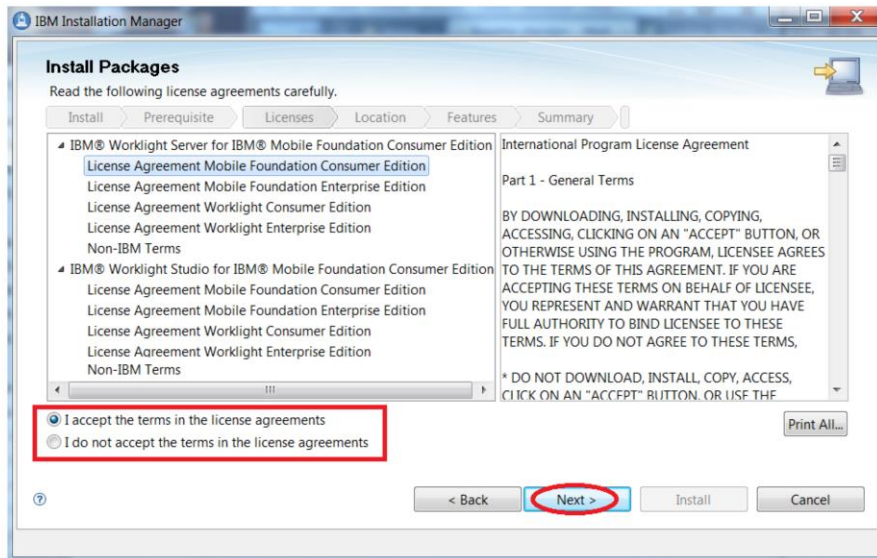
Installing Worklight (4 of 24)



- Click “Next”

This panel will only be displayed if Worklight Studio has been selected to be installed; read the information provided and click “Next”.

Installing Worklight (5 of 24)

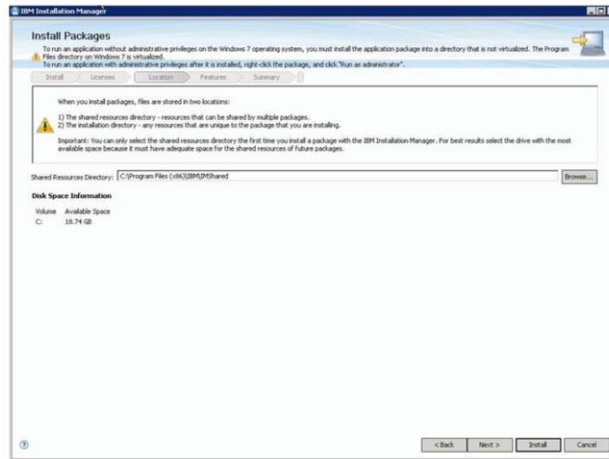


- Select the “I accept” radio button and click “Next”

This panel shows the license agreements. To review all of them, IBM and non-IBM, select items in the tree.

Then select the I accept radio button and click Next.

Installing Worklight (6 of 24)



- Click "Next"

18

Installation

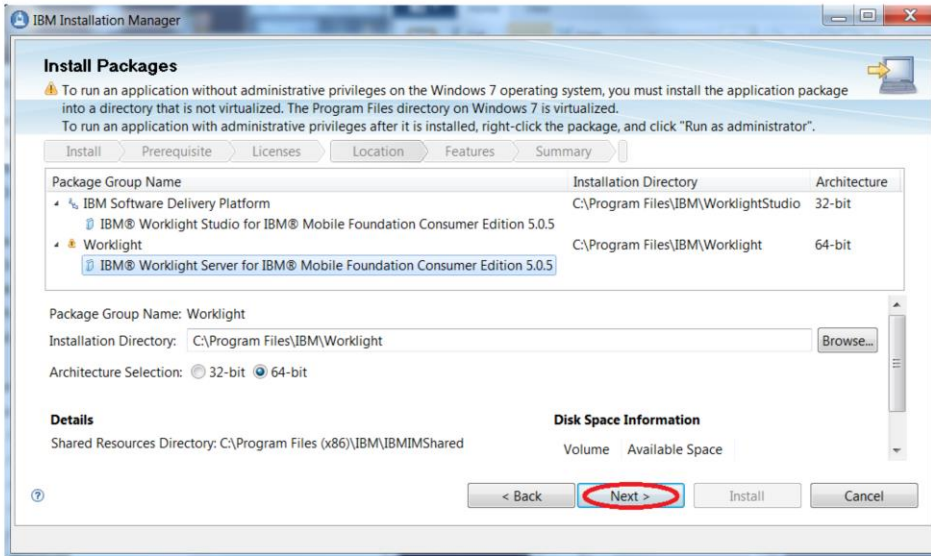
© 2013 IBM Corporation

When this is the first offering installed by the IBM Installation Manager on the system, a shared resource location is required.

Once this location is set, the subsequent use of IBM Installation Manager always uses this location without asking again.

Click Next.

Installing Worklight (7 of 24)



- Click "Next"

19

Installation

© 2013 IBM Corporation

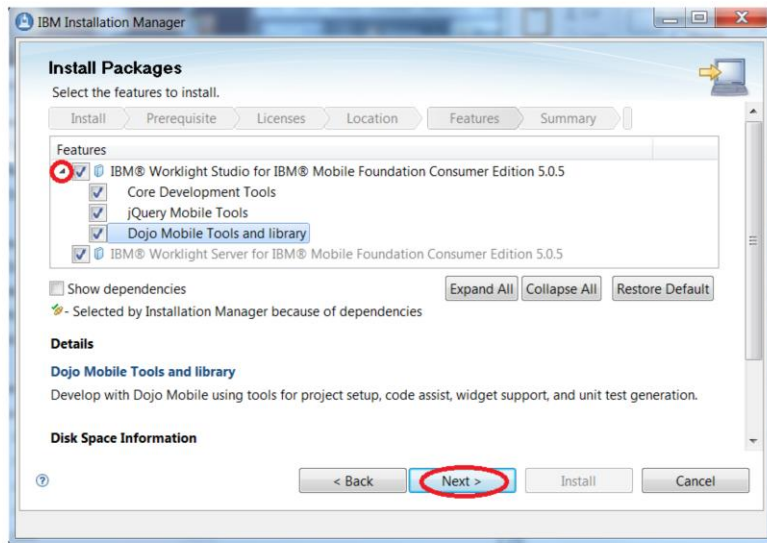
Select items in the tree to see more information.

Worklight Studio and Server cannot be installed in same package group.

You can select 32 or 64-bit architecture: by default, Studio proposes 32-bit and Server proposes your operating system architecture.

If needed, change the default installation location for any package and click Next.

Installing Worklight (8 of 24)



- Click “Next”

20

Installation

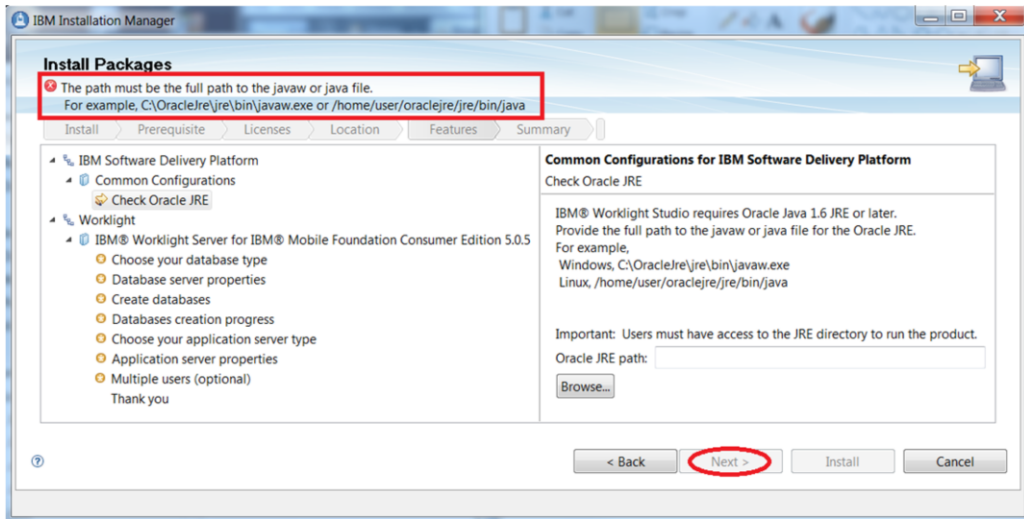
© 2013 IBM Corporation

In this feature selection panel, “All” is selected by default but you can choose to select or clear individual components. Core Development Tools cannot be cleared. In this example, the default options are selected.

Clicking on tree items will show some information at the bottom of the panel for each.

Click Next.

Installing Worklight (9 of 24)



- Click "Next"

21

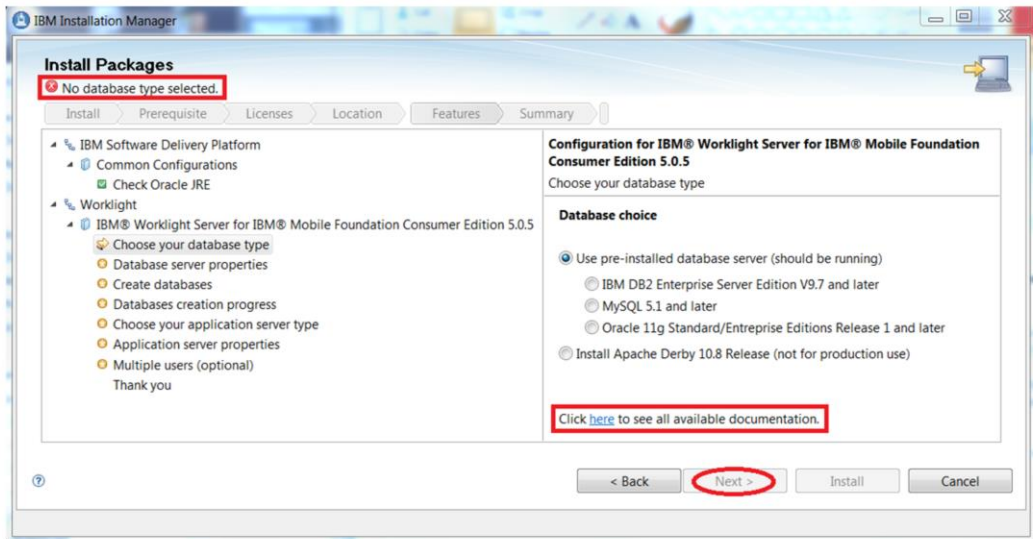
Installation

© 2013 IBM Corporation

The next features panels are displayed or not, depending on which packages you have selected to install: Worklight Studio, Worklight Server or both.

For Worklight Studio, provide the Oracle JRE path. Click Next.

Installing Worklight (10 of 24)



- Click "Next"

22

Installation

© 2013 IBM Corporation

For Worklight Server, you are able to choose the database and application server.

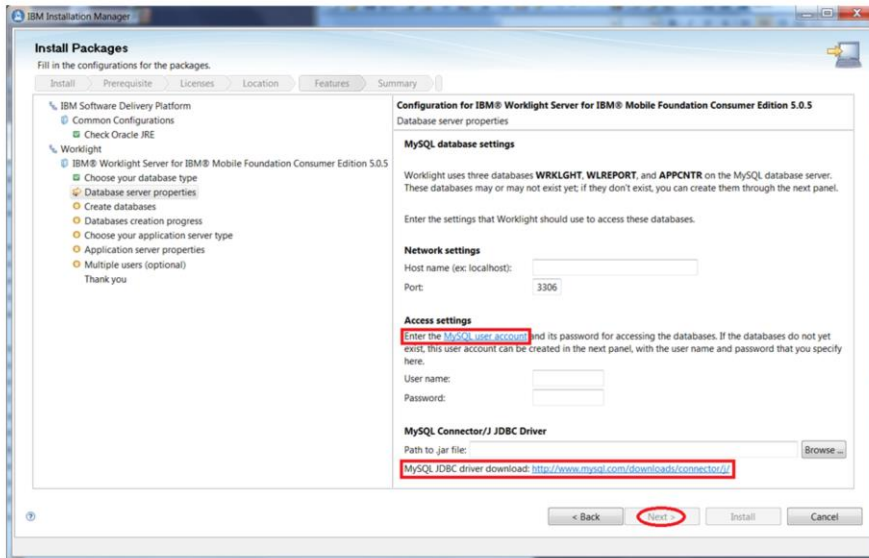
The first panel asks you to choose the database: you can choose to install Derby or to use a listed pre-installed database.

A link to the documentation is available. If a browser window does not open when you click on the documentation link, hover the mouse over the link. A tooltip will appear. Click on the tooltip to select it so you can copy and paste it in to a browser.

Click Next.

Installing Worklight (11 of 24)

- MySQL



- Provide required information and click "Next"

If you choose to install Derby, no settings are required.

If you select a pre-installed database, enter the related settings. Port has a default value but you can change it if necessary. You also have links provided to help you fill in the different fields.

Installing Worklight (12 of 24)

<p>■ DB2</p> <p>DB2 database settings</p> <p>Worklight uses three databases WRKLGHT, WLREPORT, and APPCNTR on the DB2 database server. These databases may or may not exist yet; if they don't exist, you can create them through the next panel.</p> <p>Enter the settings that Worklight should use to access these databases.</p> <p>Network settings</p> <p>Host name (ex: localhost): <input type="text"/></p> <p>Port: <input type="text" value="50000"/></p> <p>Access settings</p> <p>Enter the DB2 user account and its password for accessing the databases.</p> <p>User name: <input type="text"/></p> <p>Password: <input type="password"/></p> <p>IBM DB2 Driver for JDBC</p> <p>Path to jar file: <input type="text"/> <input type="button" value="Browse ..."/></p> <p>DB2 driver download: http://www-01.ibm.com/support/docview.wss?uid=swg21363866</p>	<p>■ Oracle</p> <p>Oracle database settings</p> <p>Worklight uses three databases WRKLGHT, WLREPORT, and APPCNTR on the Oracle database server. These databases may or may not exist yet; if they don't exist, you can create them through the next panel.</p> <p>Enter the settings that Worklight should use to access these databases.</p> <p>Network settings</p> <p>Host name (ex: localhost): <input type="text"/></p> <p>Port: <input type="text" value="1521"/></p> <p>Access settings</p> <p>Enter the Oracle user account and its password for accessing the databases. If the databases do not yet exist, this user account can be created for each database in the next panel, with the user name and password that you specify here.</p> <p>User name: <input type="text"/></p> <p>Password: <input type="password"/></p> <p>Oracle 11g JDBC Driver</p> <p>Path to jar file: <input type="text"/> <input type="button" value="Browse ..."/></p> <p>Oracle JDBC driver download: http://www.oracle.com/technetwork/database/features/jdbc/index-091264.html</p>
---	---

24 Installation © 2013 IBM Corporation

What database information is required depends on the pre-installed database that you use.

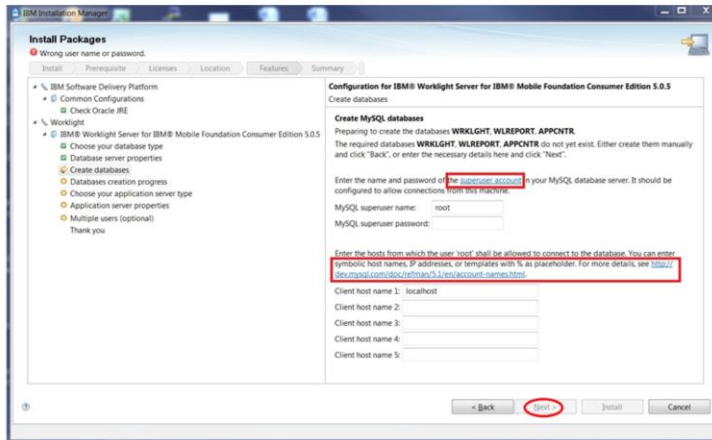
Click Next.

Installing Worklight (13 of 24)

- Databases exist

Create MySQL databases
The required MySQL databases already exist.

Create DB2 databases
The required DB2 databases already exist.
- Create MySQL databases



- Provide required information and click "Next"

25

Installation

© 2013 IBM Corporation

Before the next panel is displayed, the system verifies if the databases already exist on your machine or not.

If the databases exists, click Next twice to go to the application server panel choice

If the databases do not exist, you can let the installer create them for you by filling in this panel, or create them manually. In that case, you need to go Back to the previous panel and click Next again after creating the databases. The installer will behave as if they were present from the beginning.

Installing Worklight (14 of 24)

▪ Create DB2 databases

Create DB2 databases

Preparing to create the databases **WRKLGHT**, **WLREPORT**, **APPCNTR**.
The required databases **WRKLGHT**, **WLREPORT**, **APPCNTR** do not yet exist. Either create them manually and click "Back", or enter the necessary details here and click "Next".

For this operation, the database server needs to have an SSH daemon running.

Database instance:

The specified user 'w1stest' does not have the permissions to create the databases. Enter the name and password of a user account on the database server that has the [DB2 privilege SYSADM or SYSCTRL](#).

Admin user name:

Admin user password:

▪ Create Oracle databases

Create Oracle databases

Preparing to create the databases **WRKLGHT**, **WLREPORT**, **APPCNTR**.
The required databases **WRKLGHT**, **WLREPORT**, **APPCNTR** do not yet exist. Either create them manually and click "Back", or enter the necessary details here and click "Next".

For this operation, the database server needs to have an SSH daemon running.

Enter the operating system login and password of the Oracle database administrator.

Administrator login name:

Administrator password:

Enter passwords for the users SYS and SYSTEM of the new databases.

Password for user SYS:

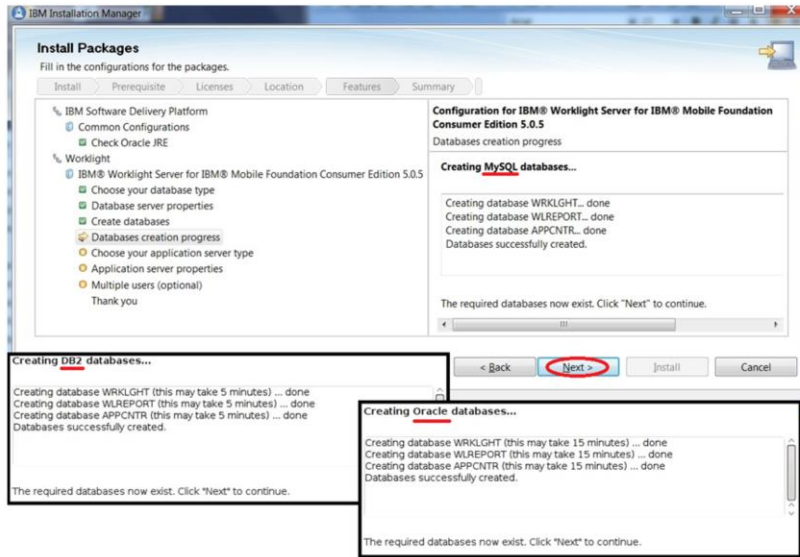
Confirm password for user SYS:

Password for user SYSTEM:

Confirm password for user SYSTEM:

Enter the information for your databases and click next.

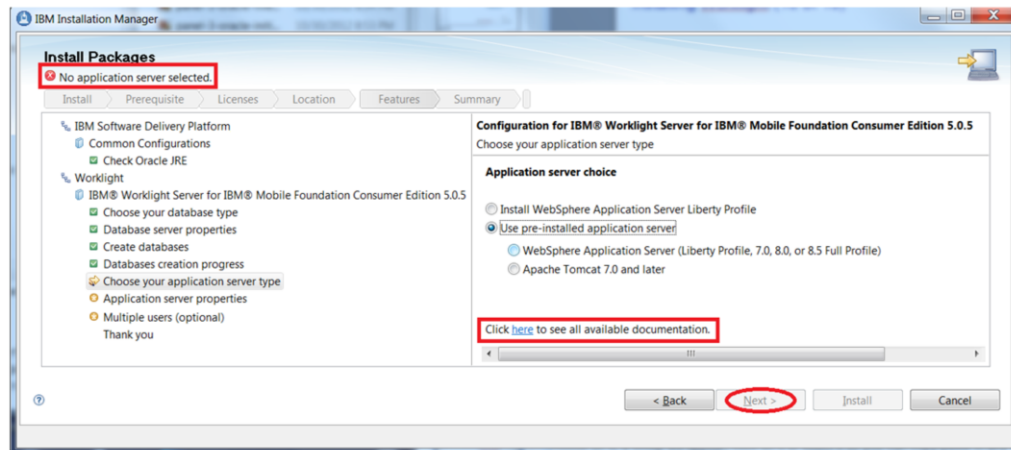
Installing Worklight (15 of 24)



- Click Next

After the tables are created, click Next.

Installing Worklight (16 of 24)



- Click "Next"

28

Installation

© 2013 IBM Corporation

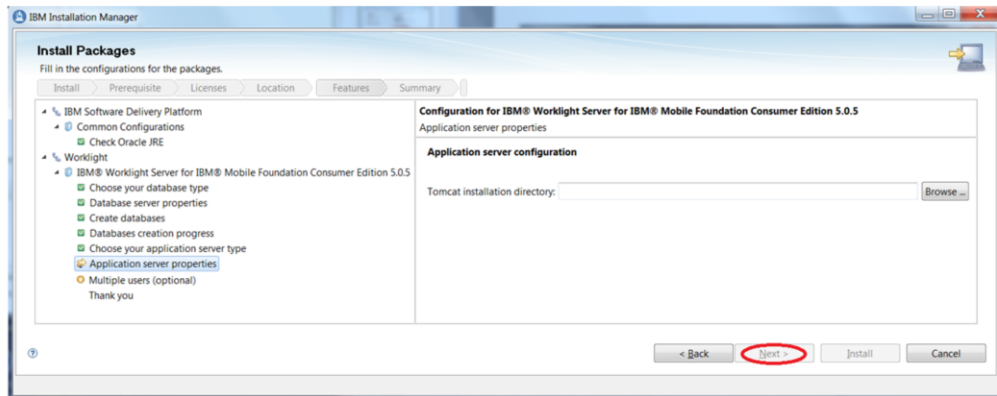
After you enter the database properties, you can select the application server to use.

You can choose to install an instance of the Liberty application profile or to use a listed pre-installed application server.

A link to the documentation is available if needed.

Click next.

Installing Worklight (17 of 24)



- Provide required information

29

Installation

© 2013 IBM Corporation

If you choose to install WebSphere Application Server Liberty Profile, no settings are required.

If you selected pre-installed Tomcat, you are required to enter its installation directory.

Installing Worklight (18 of 24)

Configuration for IBM® Worklight Server for IBM® Mobile Foundation Consumer Edition 5.0.0.3
Application server properties

Application server configuration

WebSphere installation directory:

Profile:

Application server configuration

WebSphere installation directory:

Profile:

Server name:

Liberty profile

Not-Liberty profile

Application server configuration

WebSphere installation directory:

Profile:

Cell:

Node:

Administrator login:

Administrator password:

Server:

This installation will create a user account:

User name:

Password:

Please take note of this password.

- Provide required information and click Next

30

Installation

© 2013 IBM Corporation

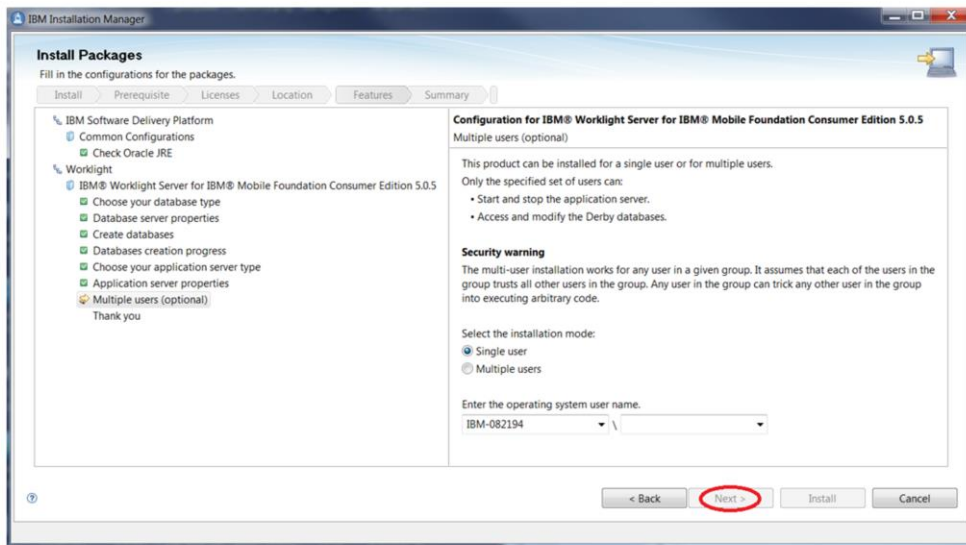
If you selected pre-installed WebSphere Application Server, enter its installation directory. The combo-box will then be filled in with all available profiles so that you can choose the one to be used.

If you select a Liberty profile, a new combo box opens, containing all available servers so you can choose the one to use for Worklight Server.

If you select a not-Liberty profile, you will need to provide more information.

Click Next.

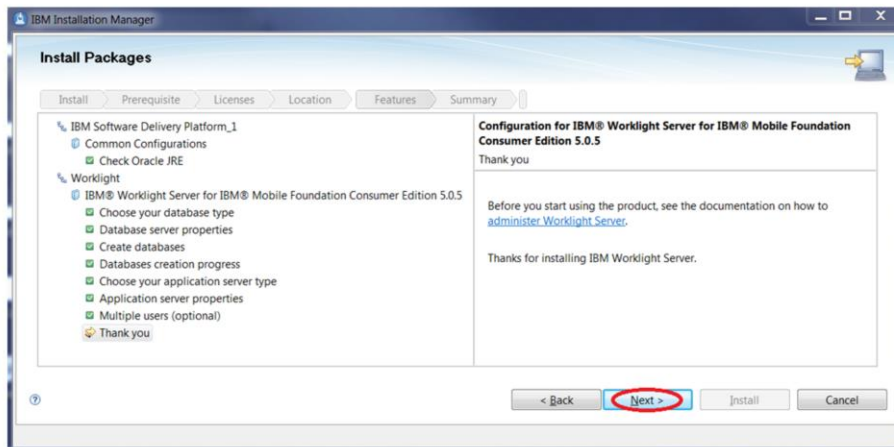
Installing Worklight (19 of 24)



- Choose your installation mode, provide required information and click Next

The Next panel let you choose to install for a single user or for multiple users. Read the information; it differs depending on the selected application server and the system you are installing on.

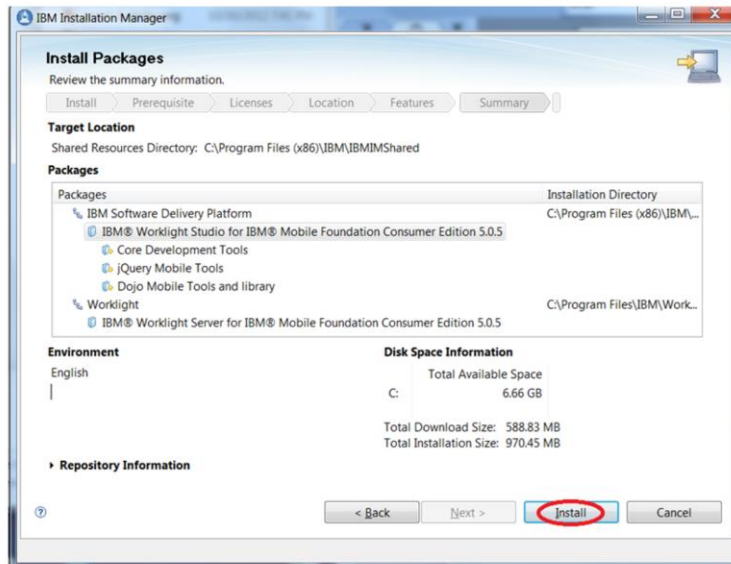
Installing Worklight (20 of 24)



- Click "Next"

The last panel recommends that you read the documentation and gives you a link. Click "Next".

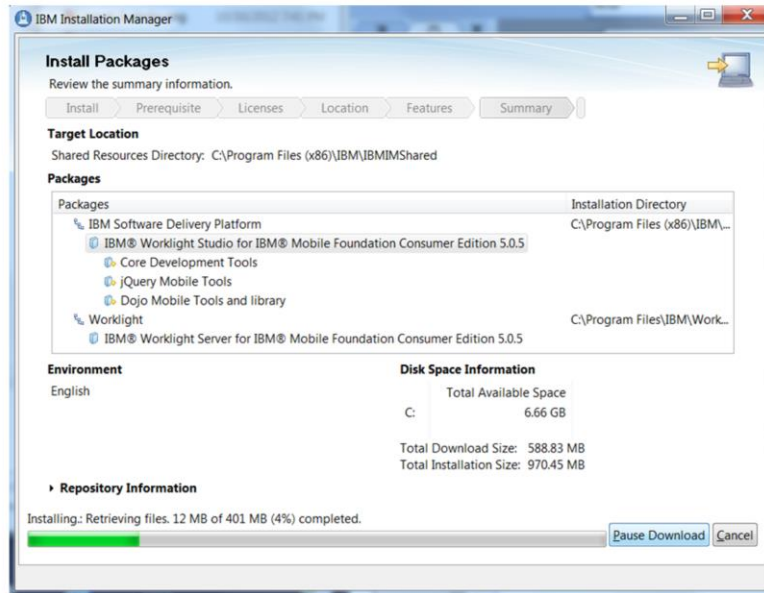
Installing Worklight (21 of 24)



- Click "Install"

Review the installation location and the features to be installed. Then click Install to start the installation.

Installing Worklight (22 of 24)



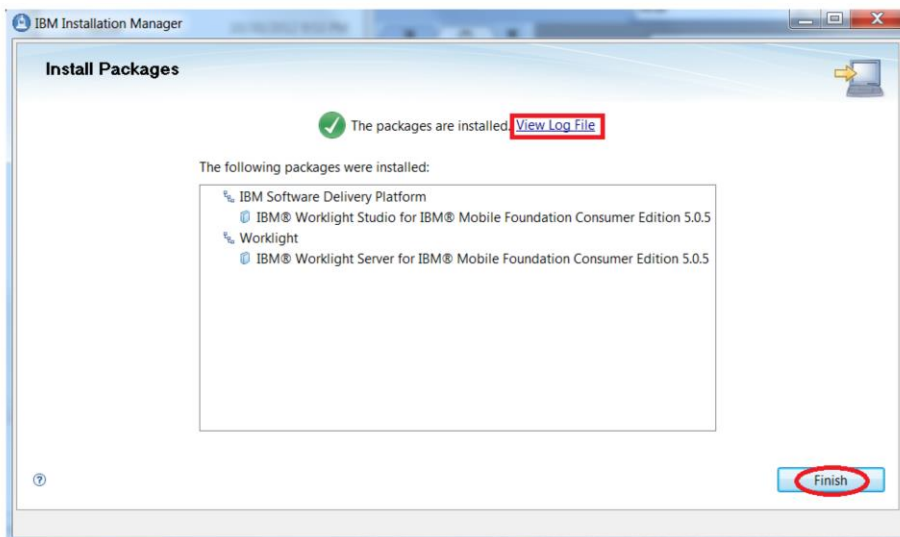
34

Installation

© 2013 IBM Corporation

During the installation, a progress bar is displayed. The installation process can be paused or canceled.

Installing Worklight (23 of 24)



- Click "Finish"

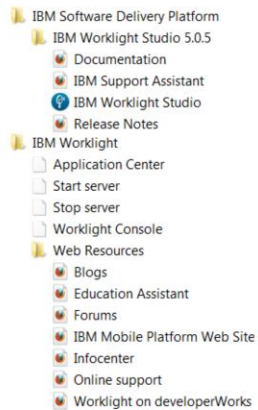
When the installation is complete, the installation status is displayed on the top of the panel, you can view the installation log using the link provided.

Click Finish to return to the Installation Manager main panel.

Installing Worklight (24 of 24)

- Worklight Server and Studio creates shortcut

▪ in Start menu for Windows



▪ in Applications for Linux



IBM Worklight Studio 5.0.5

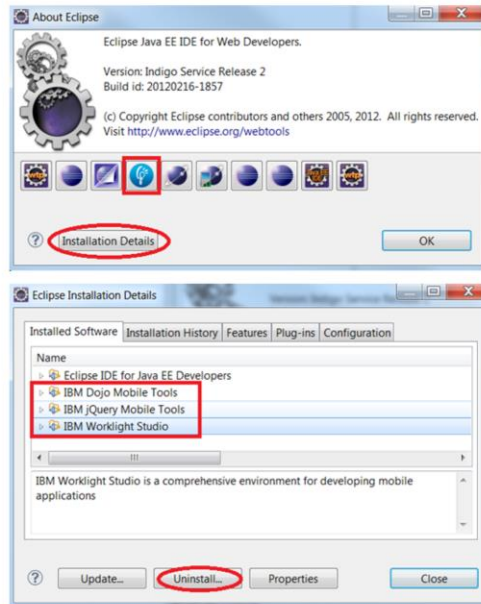
On Windows and Linux platforms, several shortcuts are created in the Start menu: from there, you are able to access the documentation and launch Studio, Application Center, and the Worklight console.

Uninstall in Eclipse

This section describes how to uninstall Worklight Studio in Eclipse.

Uninstalling Worklight Studio (1 of 3)

- Open Eclipse
- Select “About Eclipse” in “Help” menu
- In new window, select wanted features and click “Uninstall...”



38

Installation

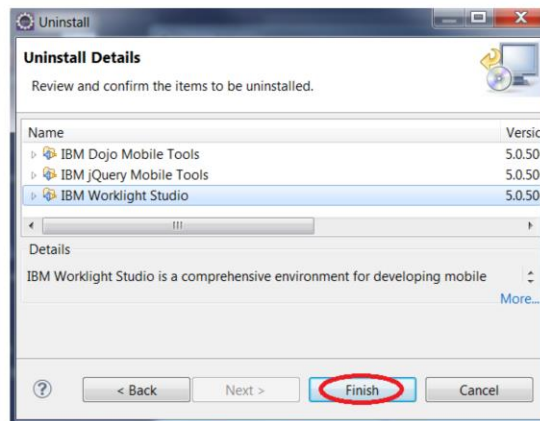
© 2013 IBM Corporation

In the About window, click the Worklight icon for License and Plug-ins details.

To uninstall, click Installation Details.

In a new window, you can see the features that are installed. Select all features you want to uninstall; for multiple selection, you need to use the Ctrl (Control) key. Click Uninstall...

Uninstalling Worklight Studio (2 of 3)

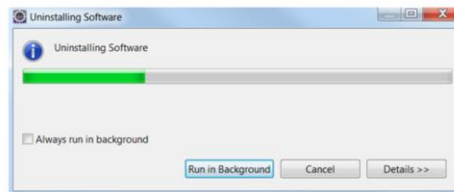


- Click "Finish"

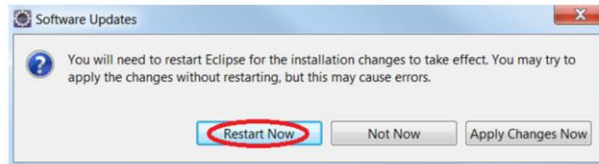
In the Uninstall Details window, verify items to be uninstalled and click Finish.

Uninstalling Worklight Studio (3 of 3)

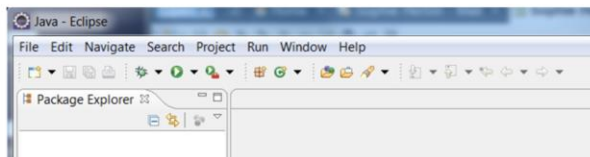
- Uninstalling will take some time



- Restart Eclipse when prompted



- Worklight items not there anymore



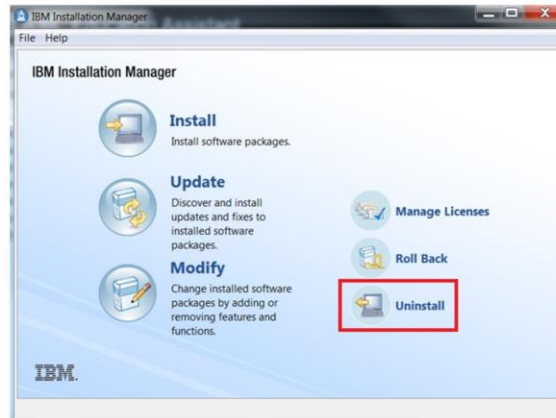
When the uninstall process is finished, restart Eclipse. After the restart, you will see that Worklight is no longer in the toolbar.

Uninstall with Installation Manager

This section describes how to uninstall Worklight using IBM Installation Manager.

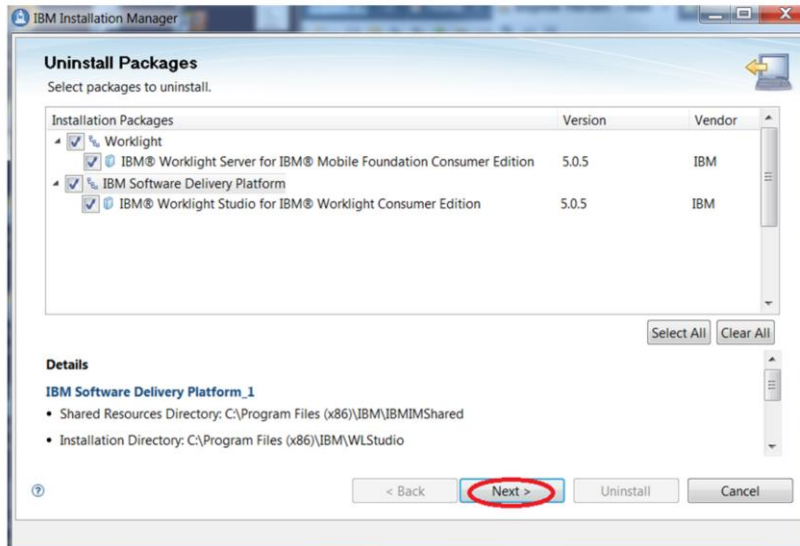
Uninstalling Worklight (1 of 4)

- Launch IBM Installation Manager
- Click “Uninstall” in main window



Start IBM Installation Manager that is installed on the system and click Uninstall in the main window to uninstall Worklight.

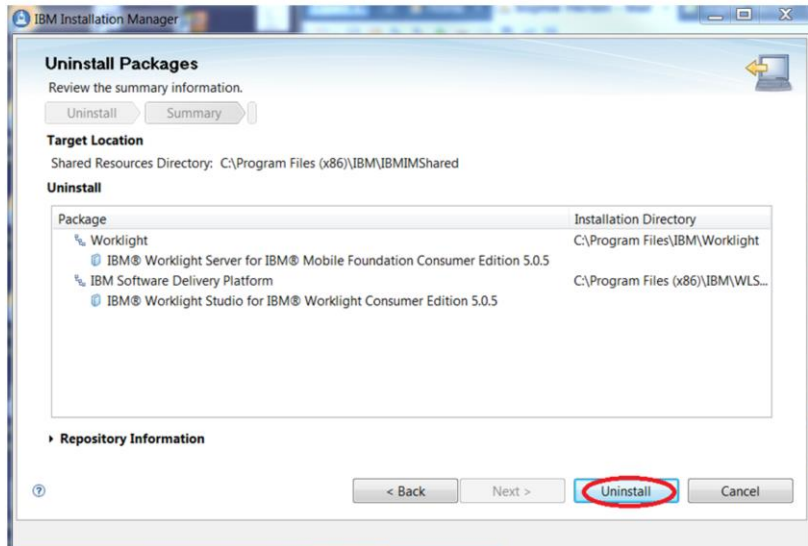
Uninstalling Worklight (2 of 4)



- Select packages to uninstall and click “Next”

Select the Packages you want to uninstall and click Next.

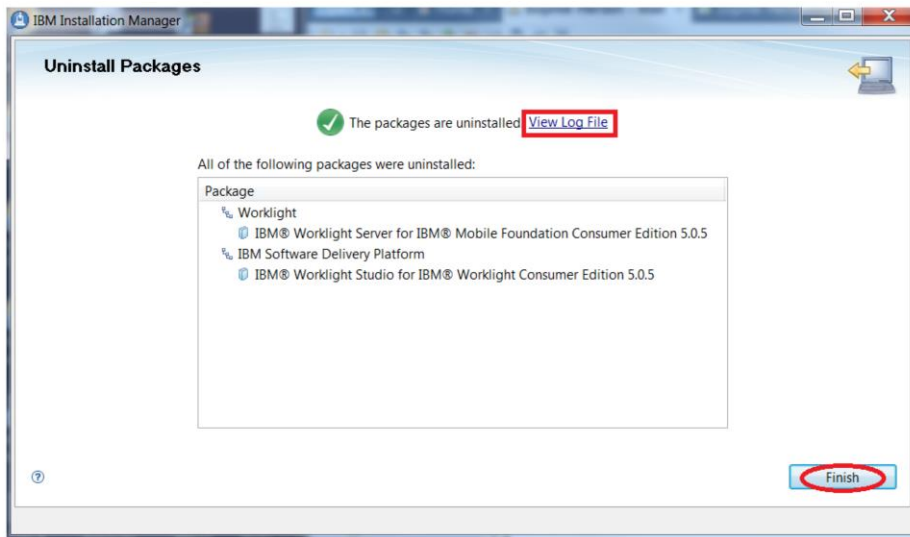
Uninstalling Worklight (3 of 4)



- Click “Uninstall”

Review the information on the Uninstall summary panel and click Uninstall to start the process.

Uninstalling Worklight (4 of 4)



- Click “Finish”

When the removal process is complete, status is displayed on the top of the panel. You can view the log file using the link provided. Click Finish to return to the Installation Manager main panel.

Section

Summary

In summary...

Summary

- Install or uninstall Worklight Studio
 - Eclipse update-site
 - IBM Installation Manager
- Install or uninstall Worklight Server
 - IBM Installation Manager

IBM Worklight Server and Studio are installed by IBM Installation Manager, which is used by many IBM products. It provides a consistent user installation experience with other IBM products. Installation Manager is not available for Macintosh.

IBM Worklight Studio can also be installed as an Eclipse plug-in from an update-site. This option is available on all supported platforms.

References

- IBM Installation Manager Information Center
 - <http://pic.dhe.ibm.com/infocenter/install/v1r6/index.jsp>
- IBM Worklight V5.0.5 Documentation
 - <http://www.ibm.com/mobile-docs>
- Eclipse SDK 3.6.2
 - <http://www.eclipse.org/downloads/packages/eclipse-ide-java-ee-developers/heliossr2>
- Eclipse SDK 3.7.2
 - <http://www.eclipse.org/downloads/packages/eclipse-ide-java-ee-developers/indigosr2>
- IBM Worklight detailed system requirements
 - <http://www-01.ibm.com/support/docview.wss?uid=swg27024838>

This slide contains links to IBM Installation Manager Information Center and IBM Worklight V5.0.5 documentation.

Trademarks, disclaimer, and copyright information

IBM, the IBM logo, ibm.com, Cast Iron, DB2, Passport Advantage, and WebSphere are trademarks or registered trademarks of International Business Machines Corp., registered in many jurisdictions worldwide. Other product and service names might be trademarks of IBM or other companies. A current list of other IBM trademarks is available on the web at "[Copyright and trademark information](http://www.ibm.com/legal/copytrade.shtml)" at <http://www.ibm.com/legal/copytrade.shtml>

Linux is a registered trademark of Linus Torvalds in the United States, other countries, or both.

Windows, and the Windows logo are registered trademarks of Microsoft Corporation in the United States, other countries, or both.

UNIX is a registered trademark of The Open Group in the United States and other countries.

Other company, product, or service names may be trademarks or service marks of others.

THE INFORMATION CONTAINED IN THIS PRESENTATION IS PROVIDED FOR INFORMATIONAL PURPOSES ONLY. WHILE EFFORTS WERE MADE TO VERIFY THE COMPLETENESS AND ACCURACY OF THE INFORMATION CONTAINED IN THIS PRESENTATION, IT IS PROVIDED "AS IS" WITHOUT WARRANTY OF ANY KIND, EXPRESS OR IMPLIED. IN ADDITION, THIS INFORMATION IS BASED ON IBM'S CURRENT PRODUCT PLANS AND STRATEGY, WHICH ARE SUBJECT TO CHANGE BY IBM WITHOUT NOTICE. IBM SHALL NOT BE RESPONSIBLE FOR ANY DAMAGES ARISING OUT OF THE USE OF, OR OTHERWISE RELATED TO, THIS PRESENTATION OR ANY OTHER DOCUMENTATION. NOTHING CONTAINED IN THIS PRESENTATION IS INTENDED TO, NOR SHALL HAVE THE EFFECT OF, CREATING ANY WARRANTIES OR REPRESENTATIONS FROM IBM (OR ITS SUPPLIERS OR LICENSORS), OR ALTERING THE TERMS AND CONDITIONS OF ANY AGREEMENT OR LICENSE GOVERNING THE USE OF IBM PRODUCTS OR SOFTWARE.

© Copyright International Business Machines Corporation 2013. All rights reserved.