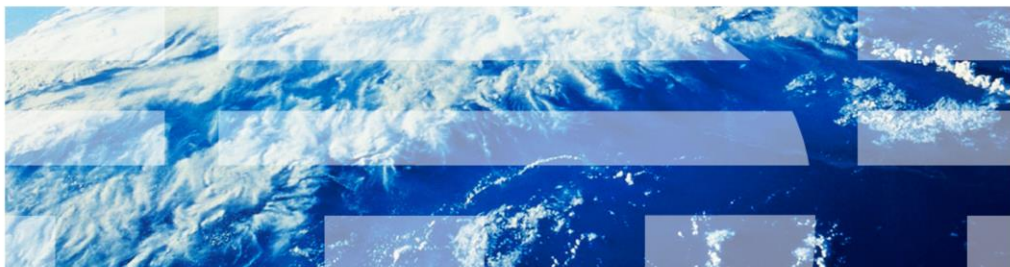


IBM Worklight V5.0 Fix Pack 3

Installer



© 2012 IBM Corporation

This presentation describes support for installer included in IBM Worklight V5.0 Fix Pack 3. This presentation will focus on an overview of the installation process for NEW users, not users updating from V5.0 or a previous Fix Pack.

Installation overview

The next section discusses the installation overview.

Install overview

- IBM Worklight V5 install package consists of these programs
 - Worklight Server
 - Application Center installed at same time
 - Worklight Studio
 - Embedded Worklight Server
- Worklight Server and Studio can be installed using Installation Manager; not Mac users
- Worklight Studio can also be installed from Eclipse update-site; for all users
- Installer won't provide any documentation, it is available on IBM site

Worklight Studio and Worklight Server can be installed separately. Studio is a comprehensive, extensible environment that maximizes code reuse and per-device optimization. Server is a mobile-optimized middleware that provides a services layer to support back-end integration, version management, security, and unified push notification mechanisms.

Installation – at a glance (1 of 3)

Packages	Components Installed	Type of install available
<p style="text-align: center;">IBM Worklight, Consumer edition V5.0</p> <p style="text-align: center;">or</p> <p style="text-align: center;">IBM Worklight, Enterprise edition V5.0</p>	<p>Part of Install</p> <ul style="list-style-type: none"> ▪ Studio <ul style="list-style-type: none"> – Embedded Worklight Server – IBM Cordova 1.6.1 – IBM Dojo 1.7.2+ – Rich Page Editor – Development Tools ▪ Server <ul style="list-style-type: none"> – Apache Derby 10.5 or pre-installed IBM DB2® database – IBM WebSphere® Application Server Liberty – console ▪ Application Center <ul style="list-style-type: none"> – Apache Derby 10.5 – IBM WAS Liberty – console 	<ul style="list-style-type: none"> ▪ Eclipse update-site (only for Studio) ▪ Installation Manager (not available for Mac users)

4

Installer

© 2012 IBM Corporation

IBM Worklight Consumer and IBM Worklight Enterprise both have the same content. Studio can be installed either through Installation Manager or an Eclipse update-site. Alternatively, Server (and Application Center, as installed with Server) can only be installed through Installation Manager. Since Installation Manager is not available for Mac users, these users can only install Studio.

Installation – at a glance (2 of 3)

Packages	Components Installed	Type of install available
<p>IBM Worklight, Developer edition V5.0</p>	<p>Part of Install</p> <ul style="list-style-type: none"> ▪ Studio <ul style="list-style-type: none"> – Embedded Worklight Server – IBM Cordova 1.6.1 – IBM Dojo 1.7.2+ – Rich Page Editor – Development Tools 	<ul style="list-style-type: none"> ▪ Eclipse update-site

This free edition is only for development use

IBM Worklight Developer edition V5 helps you reduce testing effort, develop with confidence, and deliver innovative applications faster. This configuration is available at no charge in order to alleviate barriers that keep you from building applications for IBM Worklight V5. The no-cost Developer edition is supported on a best-can-do basis and by forum only.

Installation – at a glance (3 of 3)

Packages	Content
IBM Mobile Foundation, Consumer edition V5.0	<ul style="list-style-type: none"> ▪ IBM Worklight, Consumer edition V5.0 ▪ IBM WebSphere Cast Iron® Hypervisor Edition
IBM Mobile Foundation, Enterprise edition V5.0	<ul style="list-style-type: none"> ▪ IBM Worklight, Enterprise edition V5.0 ▪ IBM Endpoint Manager ▪ IBM WebSphere Cast Iron Hypervisor Edition

IBM Mobile Foundation, Consumer edition V5.0 provides the essential elements needed for mobile development, deployment, and management in primarily a Business-to-Consumer (B2C) deployment model.

IBM Mobile Foundation, Enterprise edition V5.0 provides the essential elements needed for mobile development, deployment, and management in Business-to-Consumer (B2C), Business-to-Business (B2B), and Business-to-Enterprise (B2E) environments.

Eclipse update-site for Worklight Studio

Eclipse update-site for Studio can be used on Windows®, Linux® and MacOS.

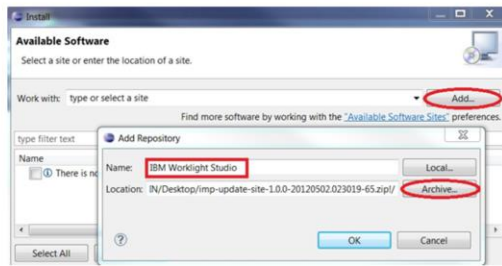
Pre-requisites

- Eclipse Classic 3.6.2, Eclipse Classic 3.7.2, Eclipse IDE for Java EE Developers 3.6.2, Eclipse IDE for Java EE Developers 3.7.2
- IBM Virtual Machine for Java Platforms 6.0, modification levels, and fix packs
- Oracle Java SDK/JRE/JDK 6.0 Update 24 and future releases, modification levels, and fix packs
- Get p2 update site zip from the IBM External Delivery Site

To install Worklight Studio, you need to have the right versions of Eclipse and JRE pre-installed.

Installing Worklight Studio (1 of 3)

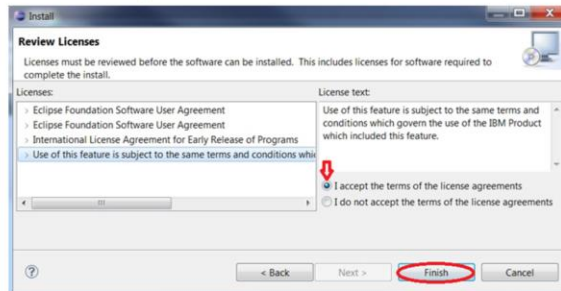
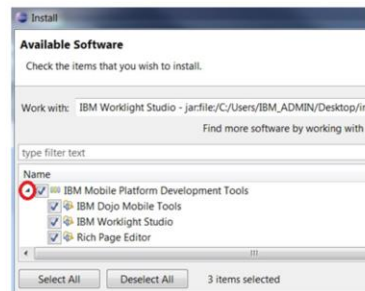
- Open Eclipse
- Select “Install New Software...” in “Help” menu
- In new window, click “Add” button
- In new window, use “Archive...” button to locate the zip image and enter the name you want
- Click “OK” to close repository window



For a beginner, these next few slides presents step by step instructions on how to install the Worklight Studio plug-in from an update-site. The first step consists of providing the location of the zip image you downloaded.

Installing Worklight Studio (2 of 3)

- In install window, click the little arrow on left side of product to expand the tree
- Select all or just what you want
- Click "Next", verify items to be installed
- Click "Next" again to see Licenses panel
- Check "I accept..." and click "Finish"



10

Installer

© 2012 IBM Corporation

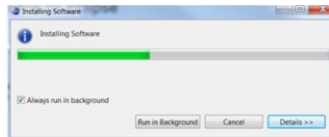
While going through the panels with "Next", you can always use "Back" to change your choices done before.

On Licenses panel, you need to use the tree to read each license before accepting all at the same time.

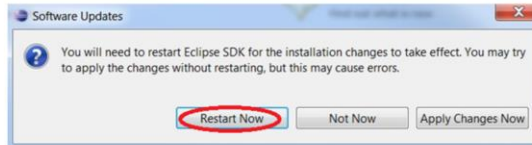
When clicking Finish, the installation starts.

Installing Worklight Studio (3 of 3)

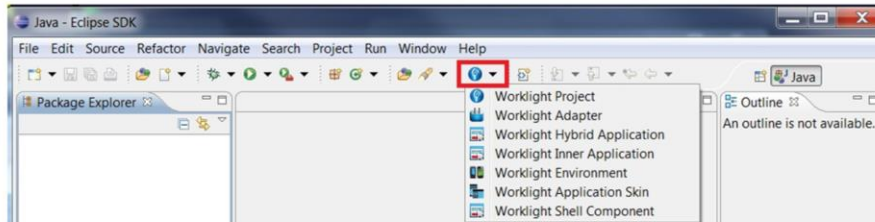
- Installation will take little time



- Restart Eclipse when asked for



- Worklight items are now available in top toolbar



11

Installer

© 2012 IBM Corporation

When installation is finished, you are asked to restart Eclipse. When done, you will see a new item is available in toolbar to let you access all Worklight Studio items.

Installation Manager (Passport Advantage Integration)

This part is dedicated to Installation Manager which can be used on Windows or UNIX[®], NOT Macintosh.

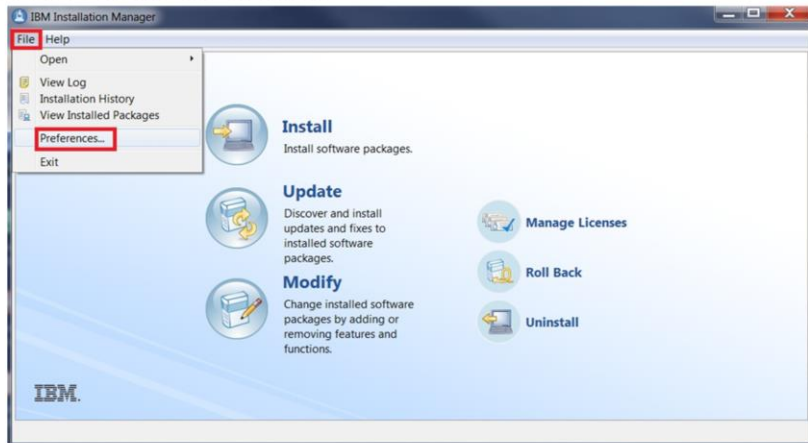
Pre-requisites

- IBM Installation Manager (IM) 1.5.2

If IBM Installation Manager does not already exist on your machine, you'll need to install it.

Installing Worklight (1 of 19)

- Launch IBM Installation Manager
- Select “Preferences...” in File” menu



14

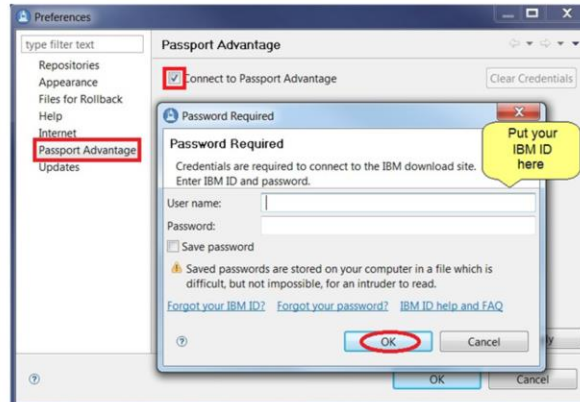
Installer

© 2012 IBM Corporation

When IBM Installation Manager is opened, you need to enter your credentials for the product you purchased. In the main window, click “File” menu to open it and then click Preferences; This will open a new window.

Installing Worklight (2 of 19)

- In “Preferences” window, select Passport Advantage in tree
- Check “Connect to Passport Advantage” box
- Provide your credentials in new window and click “OK”



15

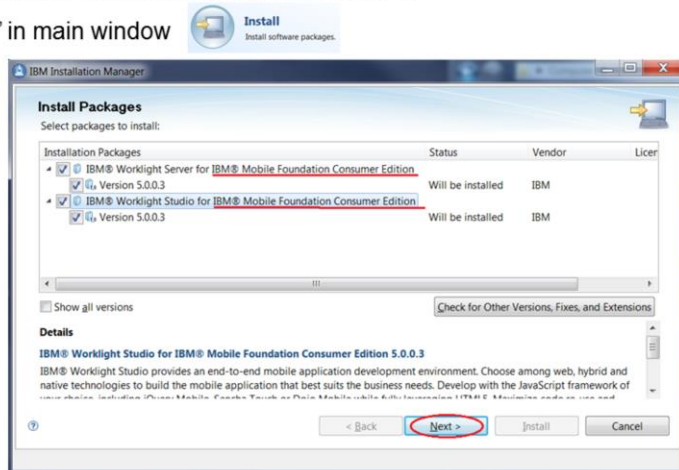
Installer

© 2012 IBM Corporation

In the Preferences window, click Passport Advantage® item in the left frame and then check the Connection box. This will open a new window in which you need to provide your IBM ID and password, if necessary. Some links are available at the bottom of the window to help you. When done, just click “OK”.

Installing Worklight (3 of 19)

- Click “OK” button in “Preferences” window to close it
- Click “Install” in main window



- Select packages to install and click “Next”

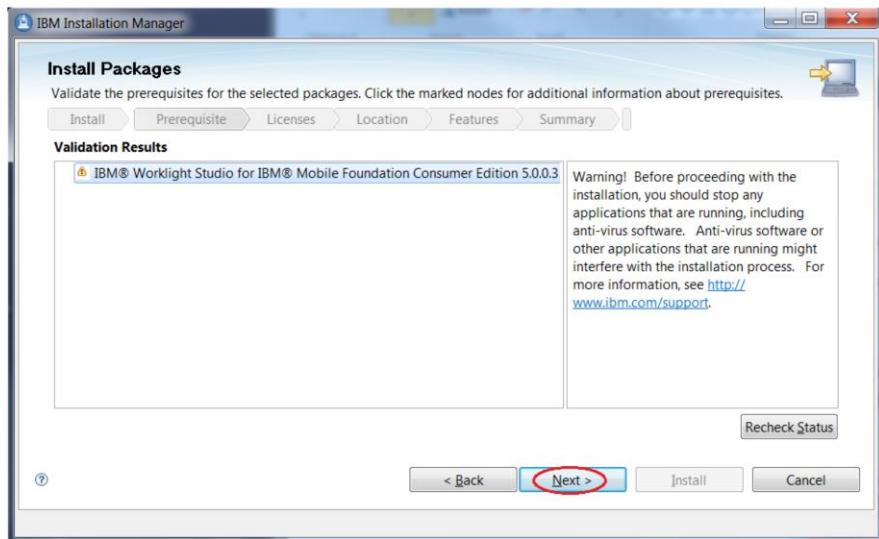
16

Installer

© 2012 IBM Corporation

If Preferences window is still open, click “OK” button to close it. After clicking on Install button, installation wizard comes up with the offering packages you have access to. Depending on your purchase, the edition displayed is different. You can select, or un-select as you wish. In this example, Worklight Server and Studio will continue to be used. Click the “Next” button to proceed the installation.

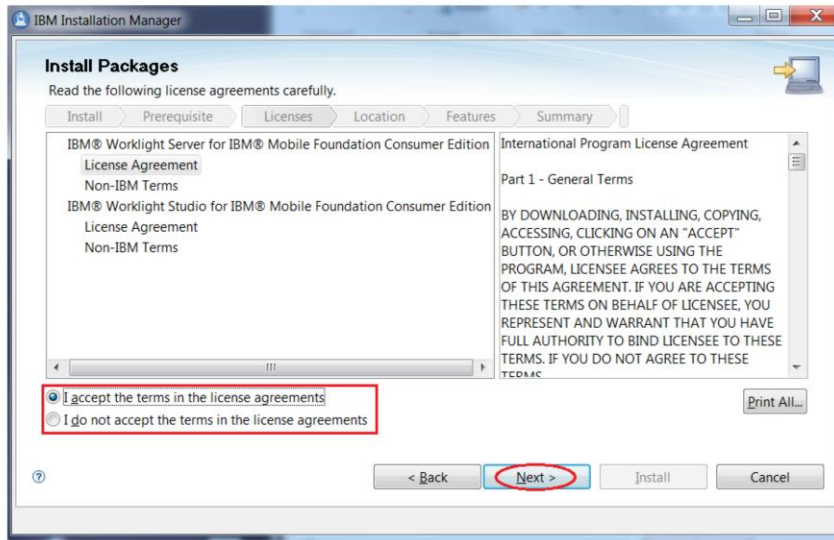
Installing Worklight (4 of 19)



- Click “Next”

The next wizard panel will only be displayed if Worklight Studio has been selected to be installed; read carefully the information provided and click “Next”.

Installing Worklight (5 of 19)



- Select the “I accept” radio button and click “Next”

18

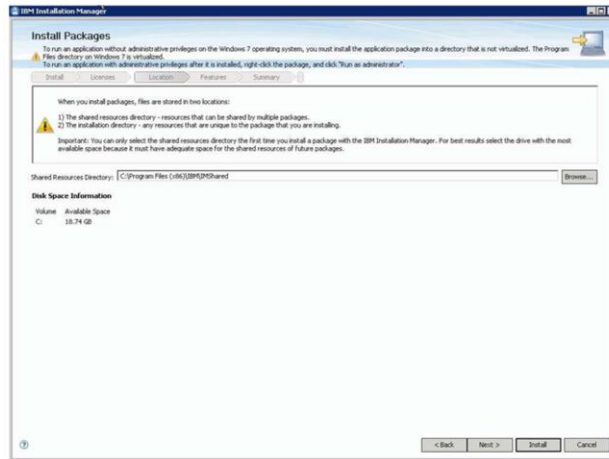
Installer

© 2012 IBM Corporation

The next wizard panel shows the license agreements. To review all of them, IBM and non-IBM, select items in tree.

When done, select the I accept radio button and click Next to proceed.

Installing Worklight (6 of 19)



- Click "Next"

19

Installer

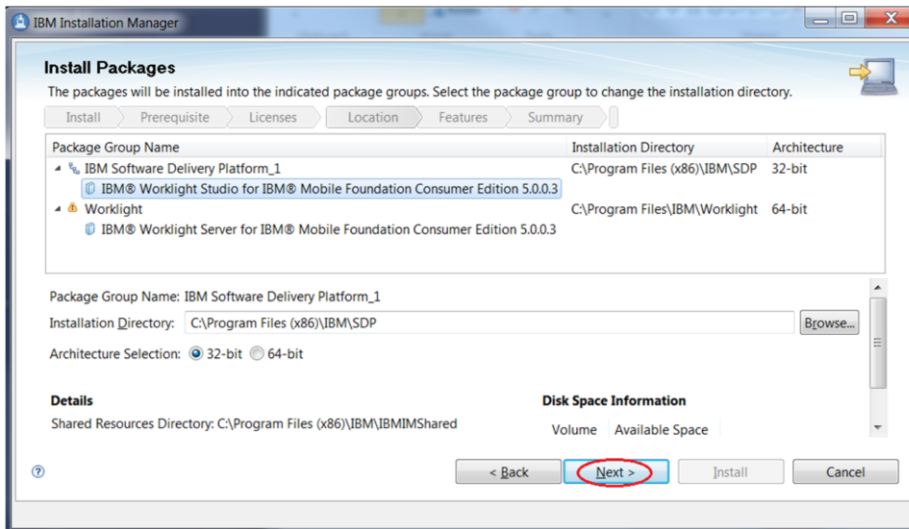
© 2012 IBM Corporation

When this is the first offering installed by the IBM Installation Manager on the system, a share resource location is required.

Once this location is set, the subsequent use of IBM Installation Manager always uses this location without asking again.

Click Next to proceed

Installing Worklight (7 of 19)



- Click "Next"

20

Installer

© 2012 IBM Corporation

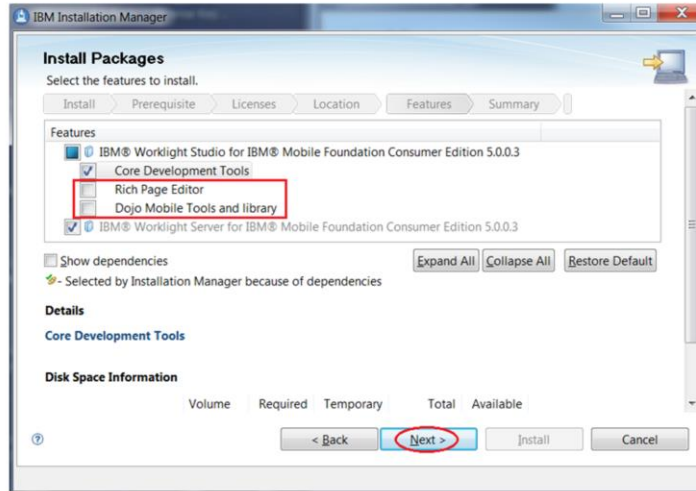
Select items in tree to see wanted information.

Worklight Studio and Server cannot be installed in same package group, if you try to, you will have an error displayed and Next won't be enabled.

You can select 32 or 64-bit architecture: by default, Studio proposes 32-bit and Server your system value (here: 64-bit as Windows 7.)

Change the default install location for any package if needed and click Next to proceed.

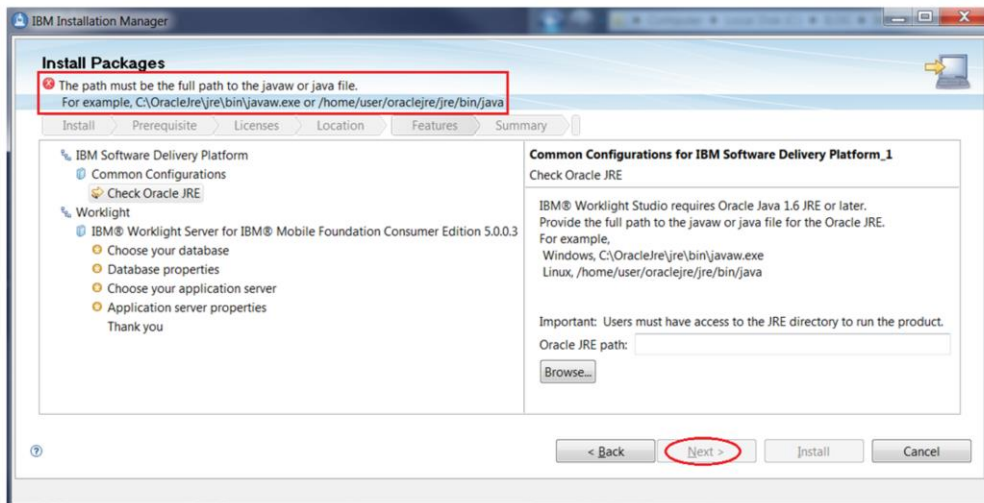
Installing Worklight (8 of 19)



- Click "Next"

In this feature selection panel, Worklight Server and Core Development Tools - part of Worklight Studio - are selected by default and cannot be deselected. You can choose to select or not Rich Page Editor and Dojo Mobile Tools and Library. In this example, you will select all. Clicking on tree items will show some information at the bottom of the panel for each. Click Next to proceed.

Installing Worklight (9 of 19)



- Click "Next"

22

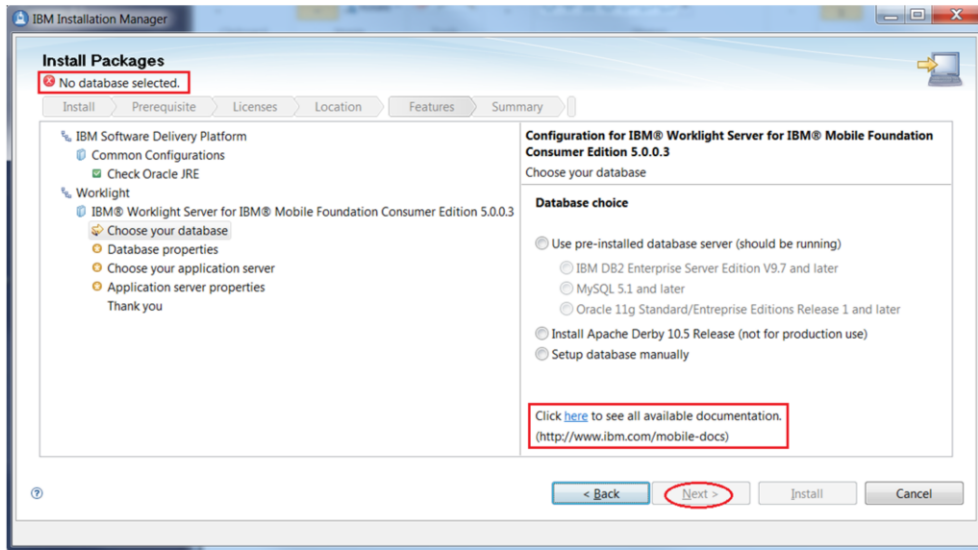
Installer

© 2012 IBM Corporation

The next feature panels are displayed or not, depending on which packages have been selected to be installed: Worklight Studio, Worklight Server or both.

For Worklight Server, you are asked for the Oracle JRE path. Clicking the Browse button will open a File browser dialog. When done, Next button becomes enabled; click it to proceed

Installing Worklight (10 of 19)



- Click "Next"

23

Installer

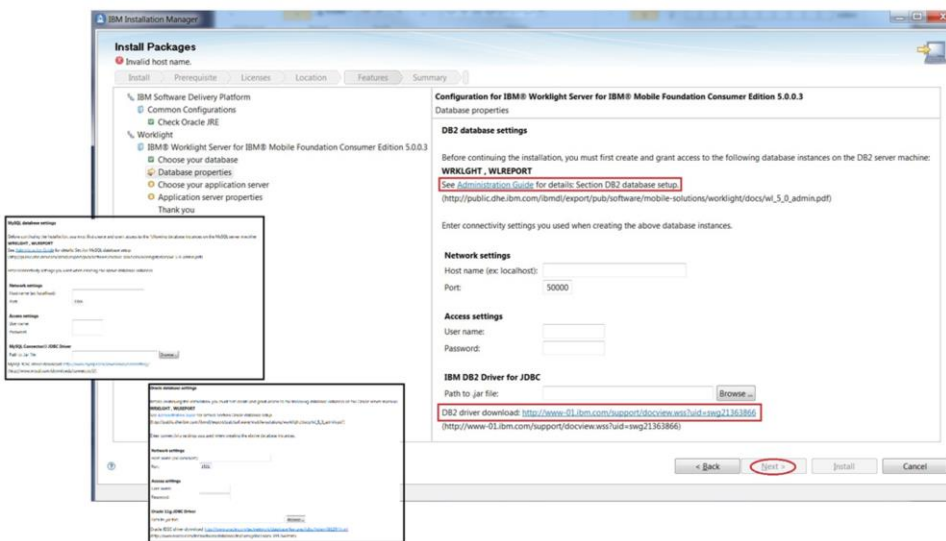
© 2012 IBM Corporation

For Worklight Server, you are able to choose database and server.

The first panel asks you to choose the database: you can choose to install Derby, to use a listed pre-installed database or to use another pre-installed database. For the last case, you need to see the Administration Guide to do it manually.

Next button becomes enabled only when a choice is done; click it to proceed.

Installing Worklight (11 of 19)



- Provide required information and click "Next"

24

Installer

© 2012 IBM Corporation

If you choose to install Derby, no settings are required.

If you select a pre-installed database, you will be required to enter the related settings. Port as a default value but you can change it if necessary. You also have a link to the Administration Guide Section concerned and to the JDBC driver if needed.

When filled in, Next button becomes enabled, click it to proceed.

Installing Worklight (12 of 19)

IBM Installation Manager

Install Packages

No application server selected.

Install Packages | Prerequisite | Licenses | Location | Features | Summary

IBM Software Delivery Platform

- Common Configurations
 - Check Oracle JRE
- Worklight
 - IBM® Worklight Server for IBM® Mobile Foundation Consumer Edition 5.0.0.3
 - Choose your database
 - Database properties
 - Choose your application server
 - Application server properties
 - Thank you

Configuration for IBM® Worklight Server for IBM® Mobile Foundation Consumer Edition 5.0.0.3

Choose your application server

Application server choice **Windows**

- Install WebSphere Application Server Liberty Profile
- Use pre-installed application server
 - WebSphere Application Server (Liberty Profile, 7.0, 8.0, or 8.5 Full Profile)
 - Apache Tomcat 7.0 and later
- Setup application server manually

Click [here](http://www.ibm.com/mobile-docs) to see all available documentation. (<http://www.ibm.com/mobile-docs>)

< Back **Next >** Install Cancel

Application server choice **Unix**

- Install WebSphere Application Server Liberty Profile
- Use pre-installed application server
 - WebSphere Application Server (Liberty Profile, 7.0, 8.0, or 8.5 Full Profile)
 - Apache Tomcat 7.0 and later
- Setup application server manually

Please enter the operating system user group that will be allowed to start the application server and have writing permissions to the associated log files and locally stored databases. The operating system user groups are defined in the file /etc/group.

admin

Click [here](http://www.ibm.com/mobile-docs) to see all available documentation. (<http://www.ibm.com/mobile-docs>)

25 Installer © 2012 IBM Corporation

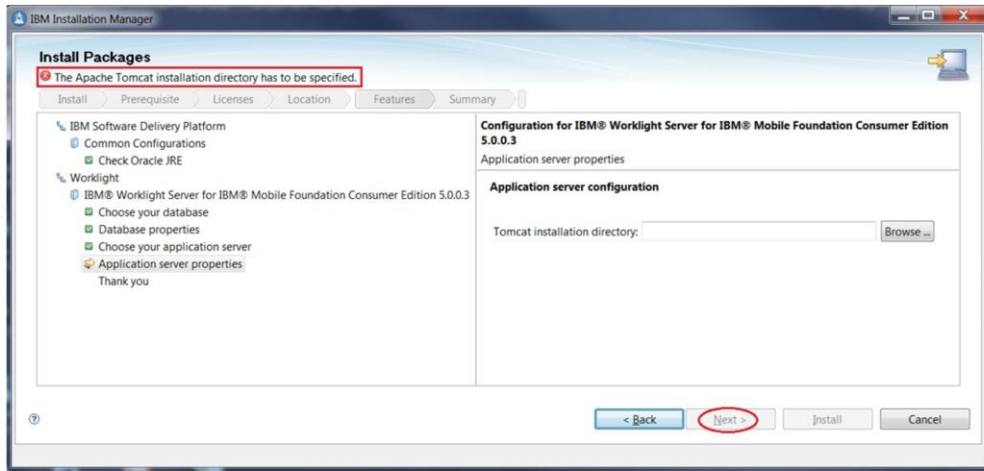
- Click "Next"

After you enter the database properties, you can select the application server to use.

You can use a listed pre-installed server, install an instance of the Liberty profile, or use another application server. For the last case, you need to see the Administration Guide to do it manually.

On UNIX platforms, you will need to enter the group of users who should be allowed to start the server. The next button becomes enabled only when a choice is made; click it to proceed.

Installing Worklight (13 of 19)



- Provide required information

26

Installer

© 2012 IBM Corporation

If you choose to install WebSphere Application Server Liberty Profile, no settings are required.

If you selected pre-installed Tomcat, you are required to enter its installation directory.

Installing Worklight (14 of 19)

Configuration for IBM® Worklight Server for IBM® Mobile Foundation Consumer Edition 5.0.0.3
Application server properties

Application server configuration

WebSphere installation directory:

Profile:

Application server configuration

WebSphere installation directory:

Profile:

Server name:

Application server configuration

WebSphere installation directory:

Profile:

Cell:

Node:

Administrator login:

Administrator password:

Server:

This installation will create a user account:

User name:

Password:

Please take note of this password.

- Provide required information and click Next

27

Installer

© 2012 IBM Corporation

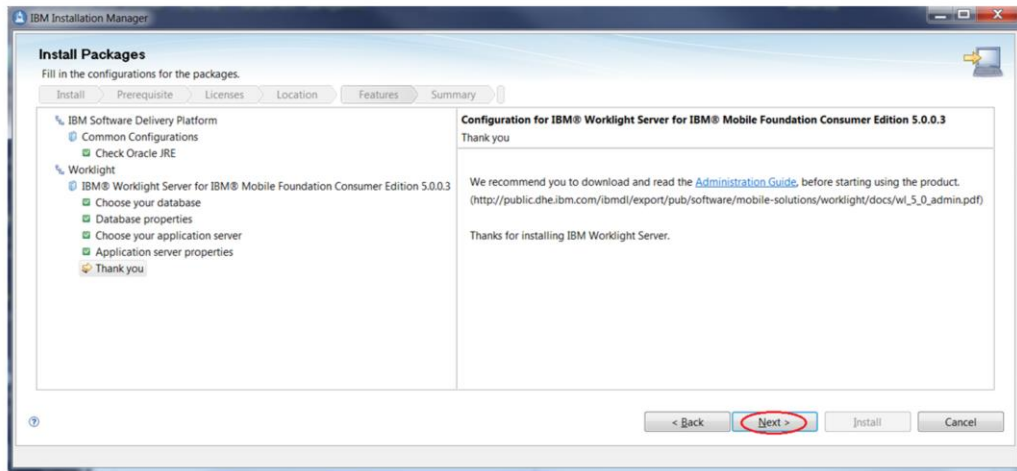
If you selected pre-installed WebSphere Application Server, you are required to enter its installation directory; the combo-box will then be filled in with all available profiles so that you can choose the one to be used.

If you select a Liberty profile, a new combo box opens containing all available servers so you can choose the one to use for Worklight Server.

If you select a non-Liberty profile, you will need to provide more information.

Next button will become available when needed information is filled in; click it to proceed.

Installing Worklight (15 of 19)



- Click "Next"

28

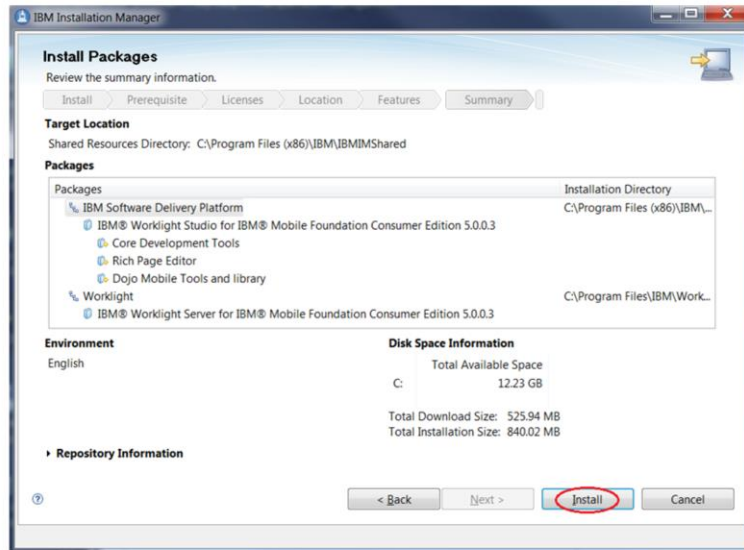
Installer

© 2012 IBM Corporation

The last panel recommends you to read the Administration Guide and gives you its PowerPoint link.

Click "Next" to continue.

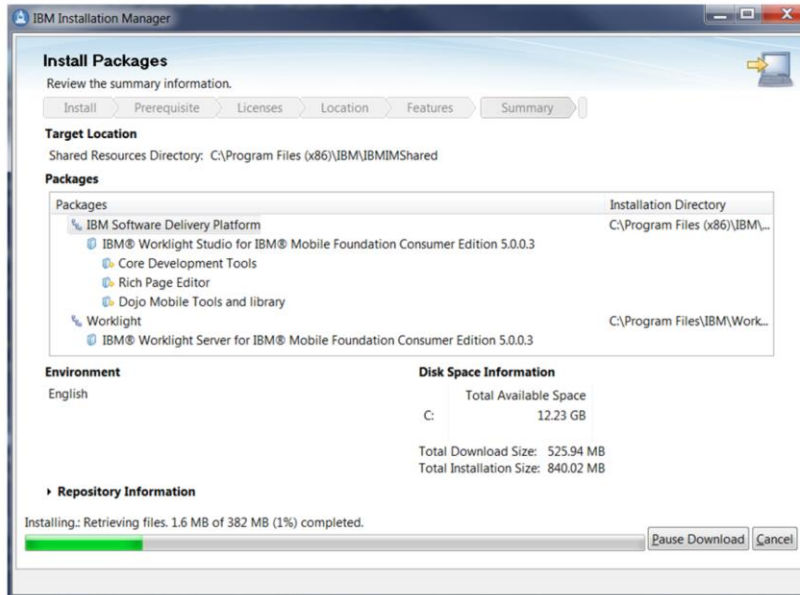
Installing Worklight (16 of 19)



- Click "Install"

Review the installation location and the installing features in the Install summary panel before clicking the Install button to start the installation.

Installing Worklight (17 of 19)



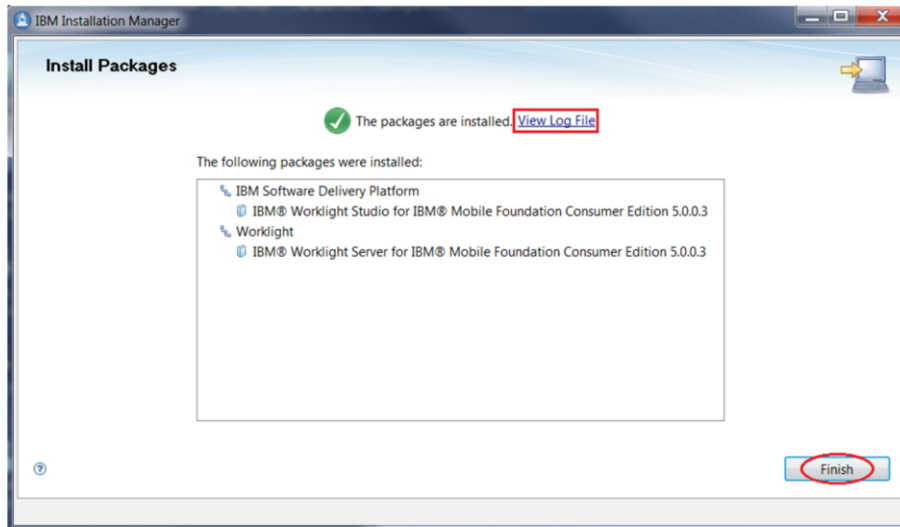
30

Installer

© 2012 IBM Corporation

During the installation, a progress status bar is displayed. The installation can be paused or canceled by clicking the buttons.

Installing Worklight (18 of 19)



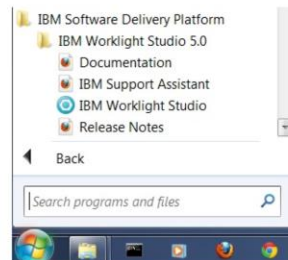
- Click "Finish"

When the installation completes, an installation status is displayed on the top of the panel, and the installation log file can be viewed by clicking the [View Log File](#) link.

Clicking Finish will bring you back to Installation Manager main panel.

Installing Worklight (19 of 19)

- On Windows, Worklight Studio installation creates shortcuts in Start menu



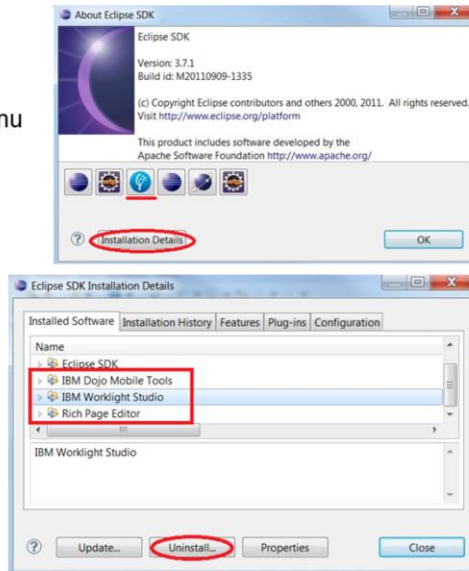
On Windows platform, if you installed Worklight Studio, you will have several shortcuts created in Start menu: from there, you are able to access all documentation, release notes and launch Studio.

Uninstall in Eclipse

The next session describes how to uninstall Worklight Studio in Eclipse.

Uninstalling Worklight Studio (1 of 3)

- Open Eclipse
- Select "About Eclipse SDK" in "Help" menu
- In new window, select wanted features and click "Uninstall..."



34

Installer

© 2012 IBM Corporation

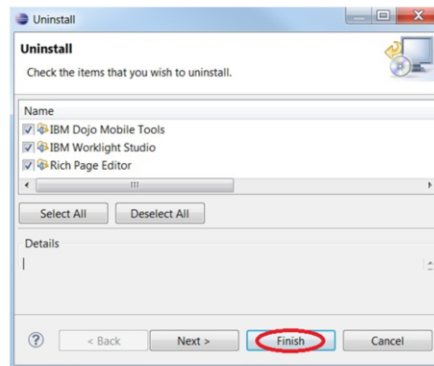
In About window, you can see Worklight icon; clicking will open a window giving information on License and Plug-ins details.

To uninstall, you need to click Installation Details.

In a new window, you can see the features you chose. Select all features you want to uninstall; for multiple selection, you need to use the Ctrl (Control) key. When done, click Uninstall...

Uninstalling Worklight Studio (2 of 3)

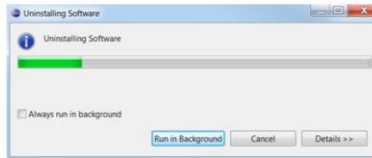
- Click “Finish”



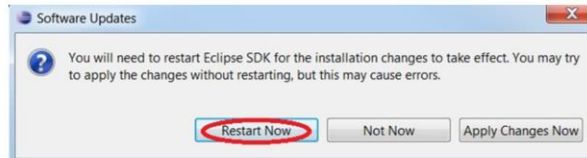
In Uninstall window, verify items to be uninstalled before clicking the Finish button.

Uninstalling Worklight Studio (3 of 3)

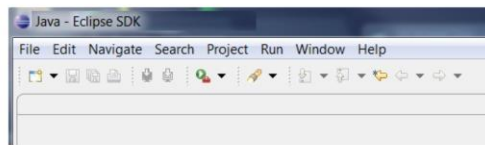
- Installation will take little time



- Restart Eclipse when asked for



- Worklight items not there anymore



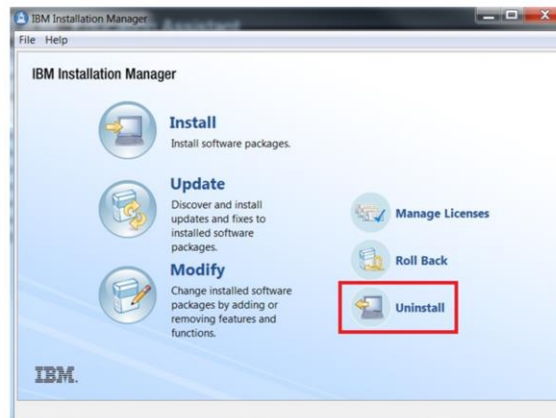
When uninstall completes, you are asked to restart Eclipse. When done, you will see that Worklight is not available in the toolbar anymore.

Uninstall with installation Manager

The next section describes how to uninstall Worklight using IBM installation Manager.

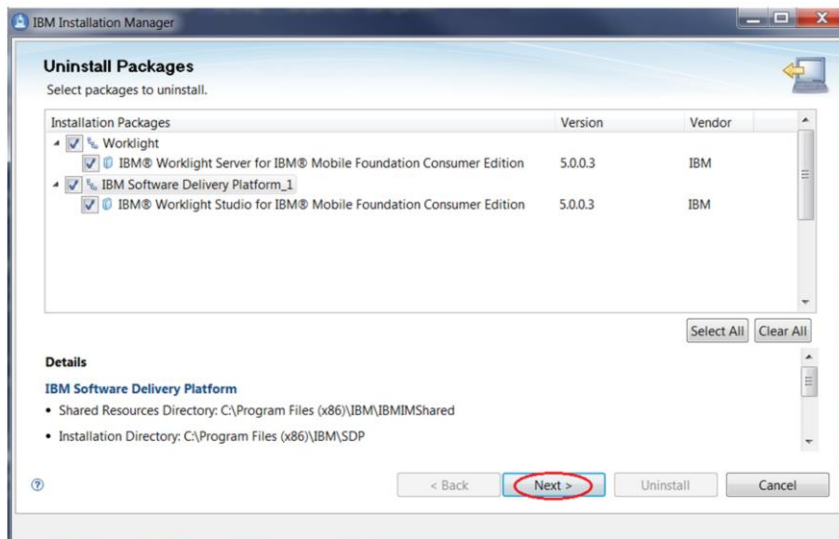
Uninstalling Worklight (1 of 4)

- Launch IBM Installation Manager
- Click “Uninstall” in main window



Start IBM Installation Manager that is installed on the system and click Uninstall in the main window to uninstall Worklight.

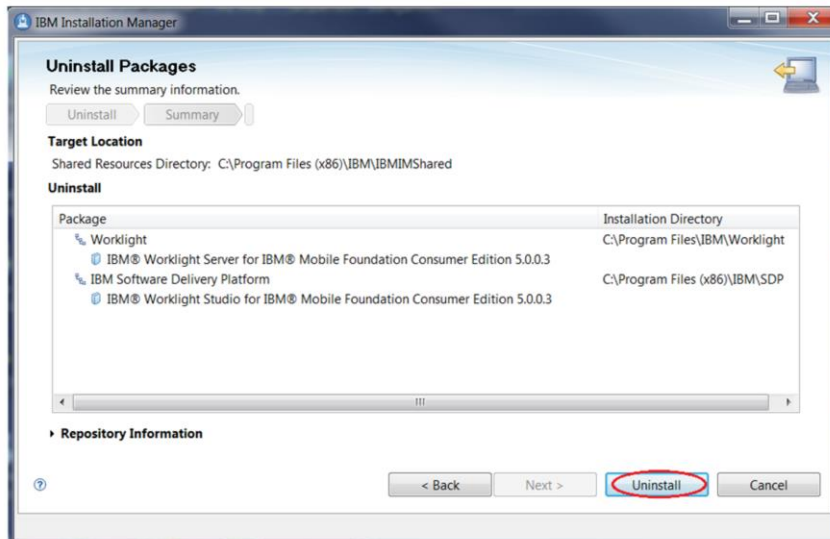
Uninstalling Worklight (2 of 4)



- Select package(s) to uninstall and click "Next"

Select the Packages you want to uninstall and click Next to proceed.

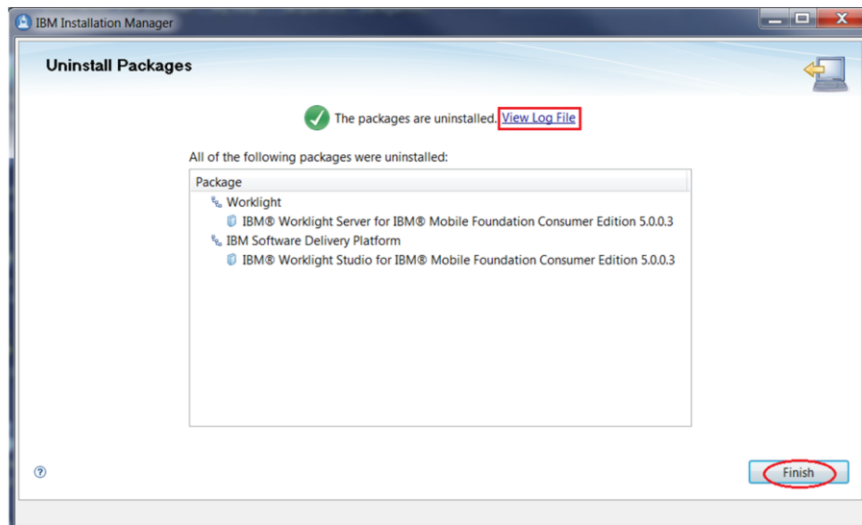
Uninstalling Worklight (3 of 4)



- Click “Uninstall”

Review the information on the Uninstall summary panel before clicking the Uninstall button to start the uninstall.

Uninstalling Worklight (4 of 4)



- Click "Finish"

When the uninstall completes, an uninstall status is displayed on the top of the panel, and the uninstall log file can be viewed by clicking the [View Log File](#) link.

Clicking Finish will bring you back to Installation Manager main panel.

Section

Summary

This section will contain a summary.

Summary

- Install / Uninstall Worklight Studio
 - Eclipse update-site
 - IBM Installation Manager
- Install / uninstall Worklight Server
 - IBM Installation Manager

IBM Worklight Server and Studio are installed by IBM Installation Manager which is used by many IBM products. It provides a consistent user installation experience with other IBM products. A limitation is that Mac users cannot use this. IBM Worklight Studio can also be installed as Eclipse plug-in from update-site and this for any user.

References

- IBM Installation Manager Information Center
 - <http://pic.dhe.ibm.com/infocenter/install/v1r5/index.jsp>
- IBM Worklight V5.0 Documentation
 - <http://www.ibm.com/mobile-docs>
- Eclipse SDK 3.6.2
 - <http://www.eclipse.org/downloads/packages/eclipse-ide-java-ee-developers/heliosr2>
- Eclipse SDK 3.7.2
 - <http://www.eclipse.org/downloads/packages/eclipse-ide-java-ee-developers/indigosr2>

This slide contains links to IBM Installation Manager Information Center and IBM Worklight V5.0 Documentation.

Trademarks, disclaimer, and copyright information

IBM, the IBM logo, ibm.com, Cast Iron, DB2, Passport Advantage, and WebSphere are trademarks or registered trademarks of International Business Machines Corp., registered in many jurisdictions worldwide. Other product and service names might be trademarks of IBM or other companies. A current list of other IBM trademarks is available on the web at "[Copyright and trademark information](http://www.ibm.com/legal/copytrade.shtml)" at <http://www.ibm.com/legal/copytrade.shtml>

Linux is a registered trademark of Linus Torvalds in the United States, other countries, or both.

Windows, and the Windows logo are registered trademarks of Microsoft Corporation in the United States, other countries, or both.

UNIX is a registered trademark of The Open Group in the United States and other countries.

Other company, product, or service names may be trademarks or service marks of others.

THE INFORMATION CONTAINED IN THIS PRESENTATION IS PROVIDED FOR INFORMATIONAL PURPOSES ONLY. WHILE EFFORTS WERE MADE TO VERIFY THE COMPLETENESS AND ACCURACY OF THE INFORMATION CONTAINED IN THIS PRESENTATION, IT IS PROVIDED "AS IS" WITHOUT WARRANTY OF ANY KIND, EXPRESS OR IMPLIED. IN ADDITION, THIS INFORMATION IS BASED ON IBM'S CURRENT PRODUCT PLANS AND STRATEGY, WHICH ARE SUBJECT TO CHANGE BY IBM WITHOUT NOTICE. IBM SHALL NOT BE RESPONSIBLE FOR ANY DAMAGES ARISING OUT OF THE USE OF, OR OTHERWISE RELATED TO, THIS PRESENTATION OR ANY OTHER DOCUMENTATION. NOTHING CONTAINED IN THIS PRESENTATION IS INTENDED TO, NOR SHALL HAVE THE EFFECT OF, CREATING ANY WARRANTIES OR REPRESENTATIONS FROM IBM (OR ITS SUPPLIERS OR LICENSORS), OR ALTERING THE TERMS AND CONDITIONS OF ANY AGREEMENT OR LICENSE GOVERNING THE USE OF IBM PRODUCTS OR SOFTWARE.

© Copyright International Business Machines Corporation 2012. All rights reserved.