



IBM Software Group

WebSphere® Message Broker Toolkit V6.0.2

Enhancements part 2: Message sets and databases



@business on demand.

© 2007 IBM Corporation
Updated May 30, 2007

This module is the second of five presenting the enhancements made to WebSphere Message Broker Toolkit V6.0.2.

Agenda

- Broker application development
 - ▶ Message sets
 - ▶ Databases

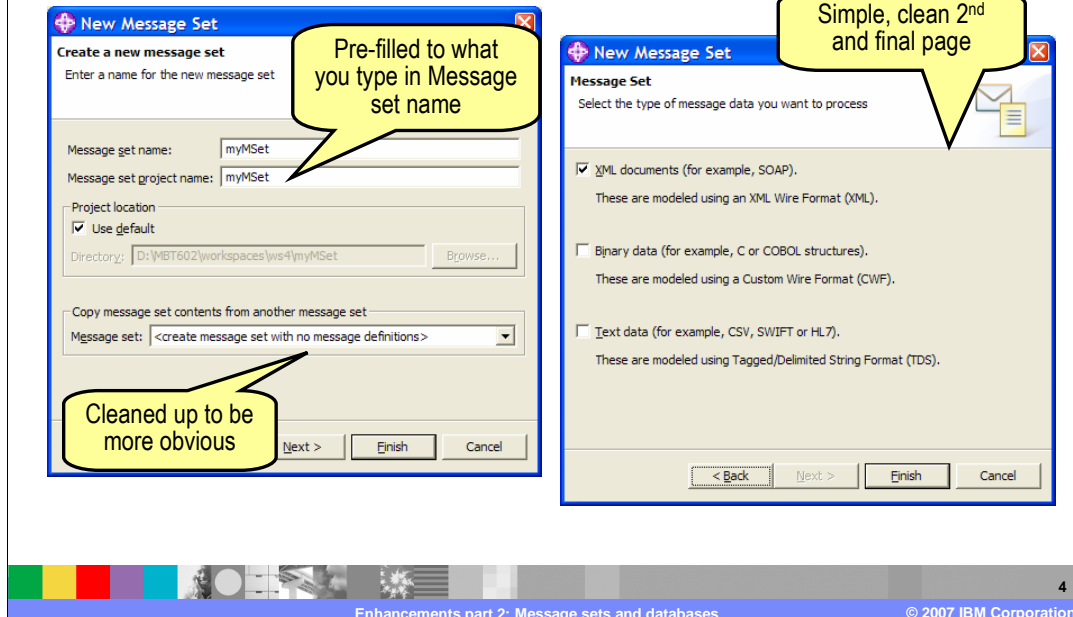
This presentation covers changes made in working with message sets and databases in the Broker Application Development Perspective.

Section

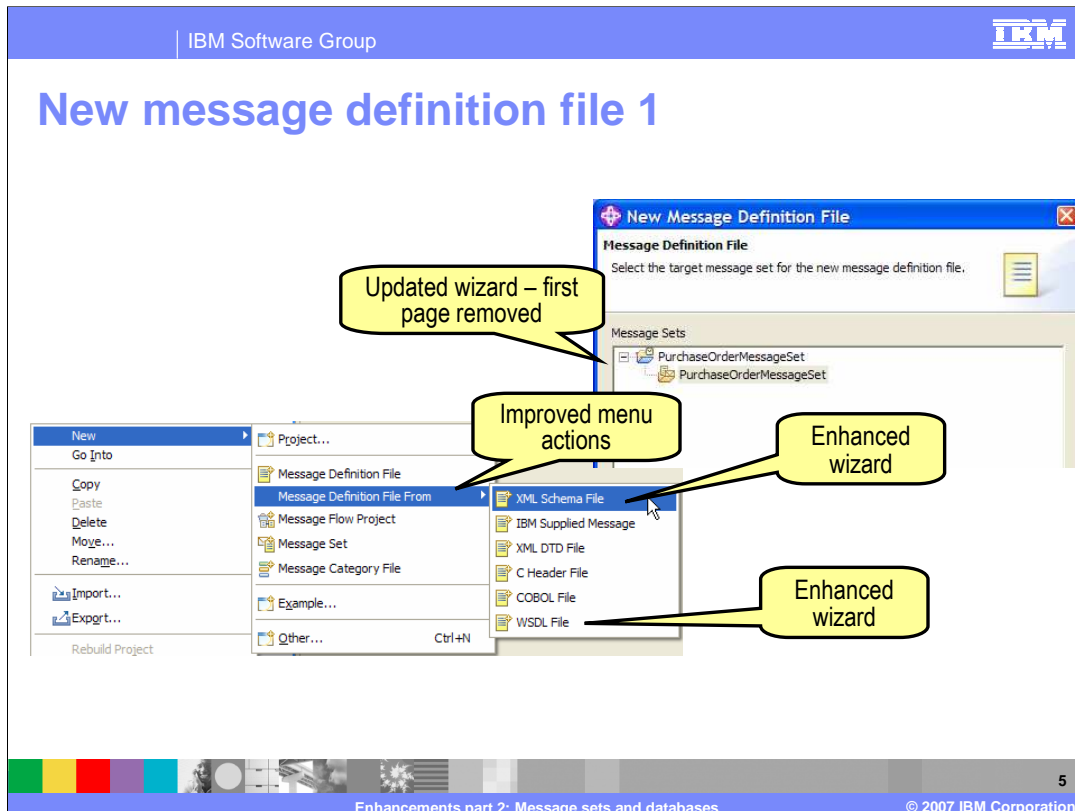
Message sets

This section discusses enhancements to message sets in V6.0.2.

Message set and project creation



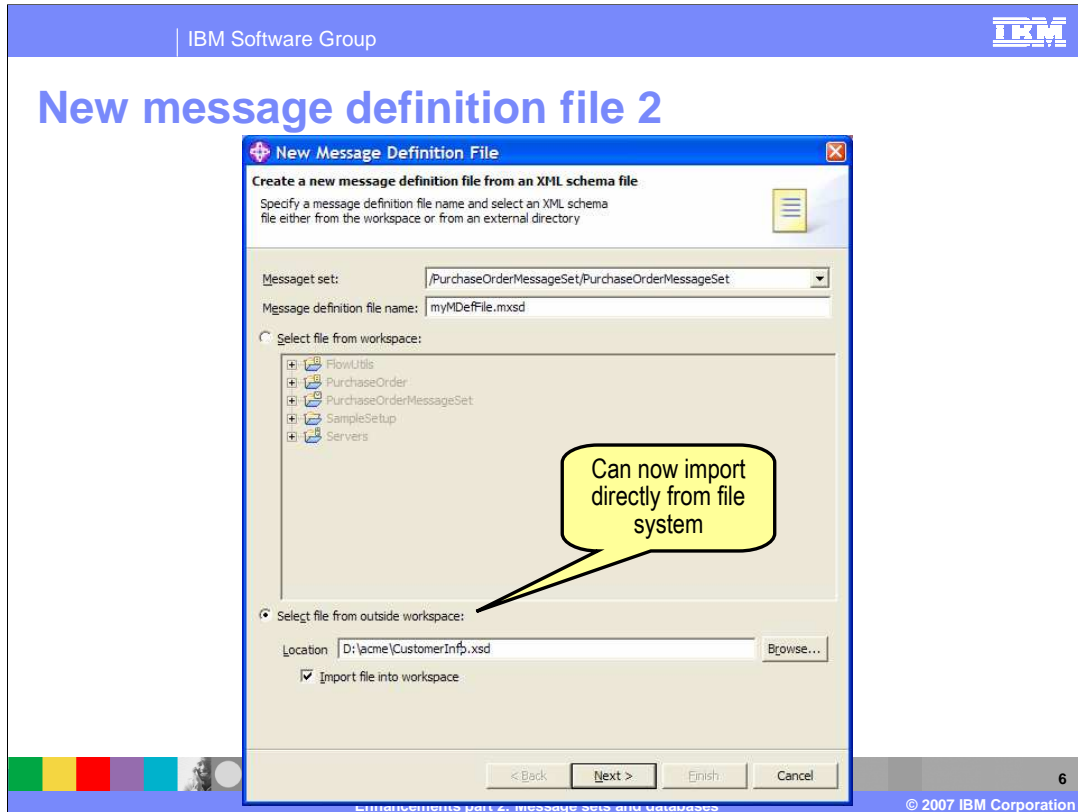
The New Message Set Project wizard has been replaced by the enhanced New Message Set wizard which allows the creation of the project while creating the Message Set.



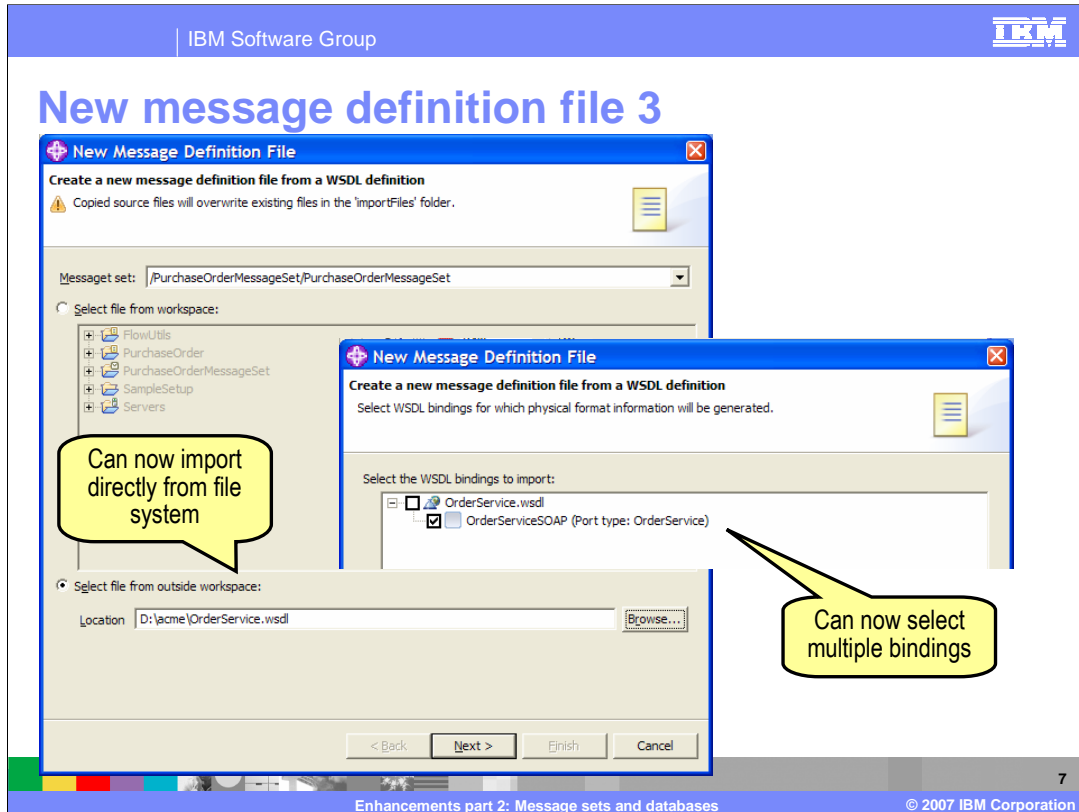
From the selected message set, you can directly create a message definition file from:

- An XML schema file
 - An IBM® supplied message
 - An XML DTD file
 - A C header file
 - A COBOL file
- and a
- WSDL file

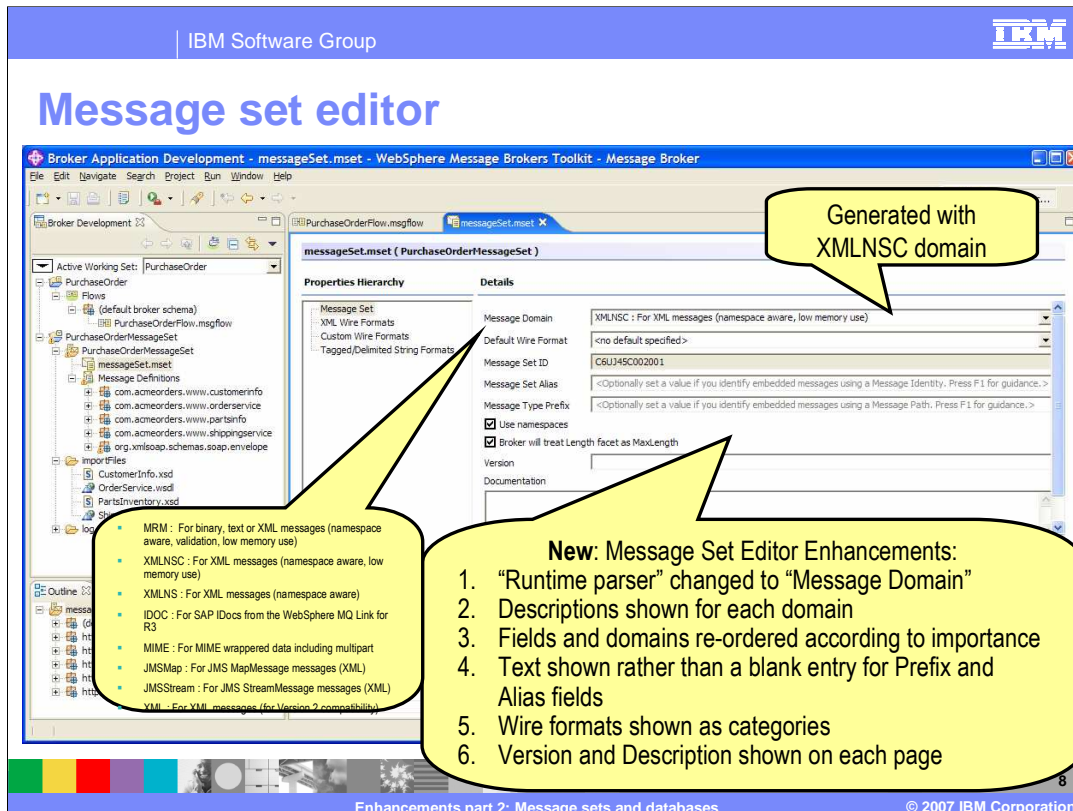
New message definition file 2



Files can be imported directly from the file system or from the workspace. The screen print here follows the previous slide where a new message definition file from XML schema was selected.



Additionally, you can select multiple bindings in this wizard



This screen capture shows what is displayed when you select a message set. New Message Set Editor enhancements include:

- “Runtime parser” changed to “Message Domain”
- Descriptions shown for each domain
- Fields and domains re-ordered according to importance
- Text shown rather than a blank entry for Prefix and Alias fields
- Wire formats shown as categories
- Version and Description shown on each page

IBM Software Group IBM

Message set editor for wire formats

Properties Hierarchy

- Message Set
 - XML Wire Formats
 - XML1
 - Custom Wire Formats
 - Tagged/Delimited String Formats

XML Wire Format Details - XML1

Namespace settings

Namespace declarations	
Namespace URI	Prefix
http://schemas.xmlsoap.org/soap/envelope/	soapenv
http://www.acmeOrders.com/CustomerInfo	tns
http://www.acmeOrders.com/OrderService	tns
http://www.acmeOrders.com/PartsInfo	tns
http://www.acmeOrders.com/ShippingService	tns

Namespace schema locations	
Namespace URI	Schema location
<no target namespace >	

Output Namespace Declaration
 At start of document

- > XML declaration
- > XML document type settings
- > XML representation of boolean values
- > XML representation of null values
- > Datetime settings
- > xsi:type settings
- ▼ **Deprecated**

These properties are used to control legacy behaviour in the MRM parser and should not be changed from their default settings. They will be withdrawn in a future release.

Root Tag Name: |

Suppress Timestamp Comment
 Enable Versioning Support

New: now partition wire format properties into collapsible sections

Slight tweaks to categorization of namespace-related properties

Collected older properties into new Deprecated section

Enhancements part 2: Message sets and databases © 2007 IBM Corporation

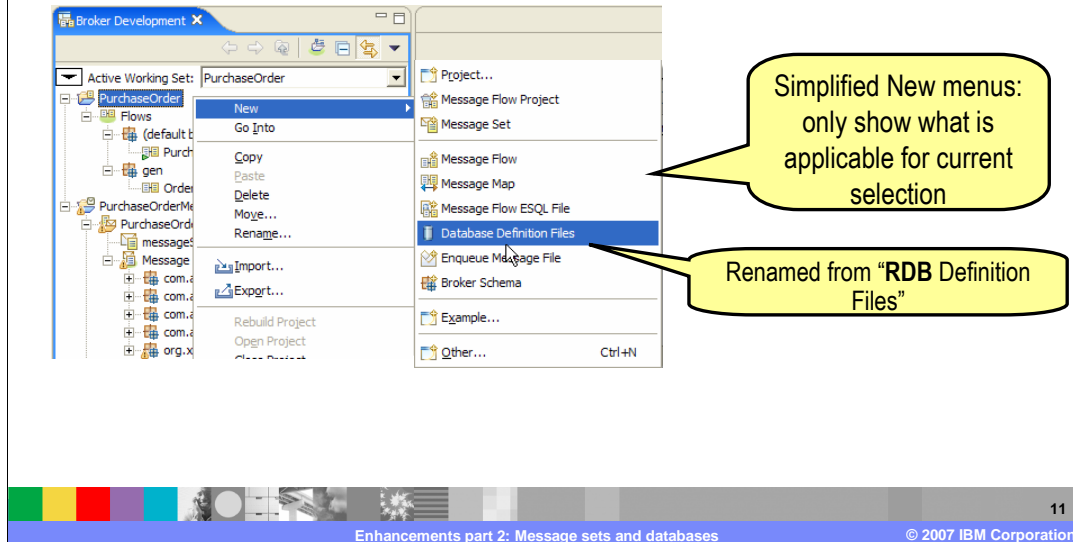
This screen capture shows additional details available about wire format properties in the message set editor. These properties have been partitioned into collapsible sections. Namespace related properties have been further categorized into declarations, schema locations and output namespace declaration. Older properties have been combined into a deprecated section.

Section

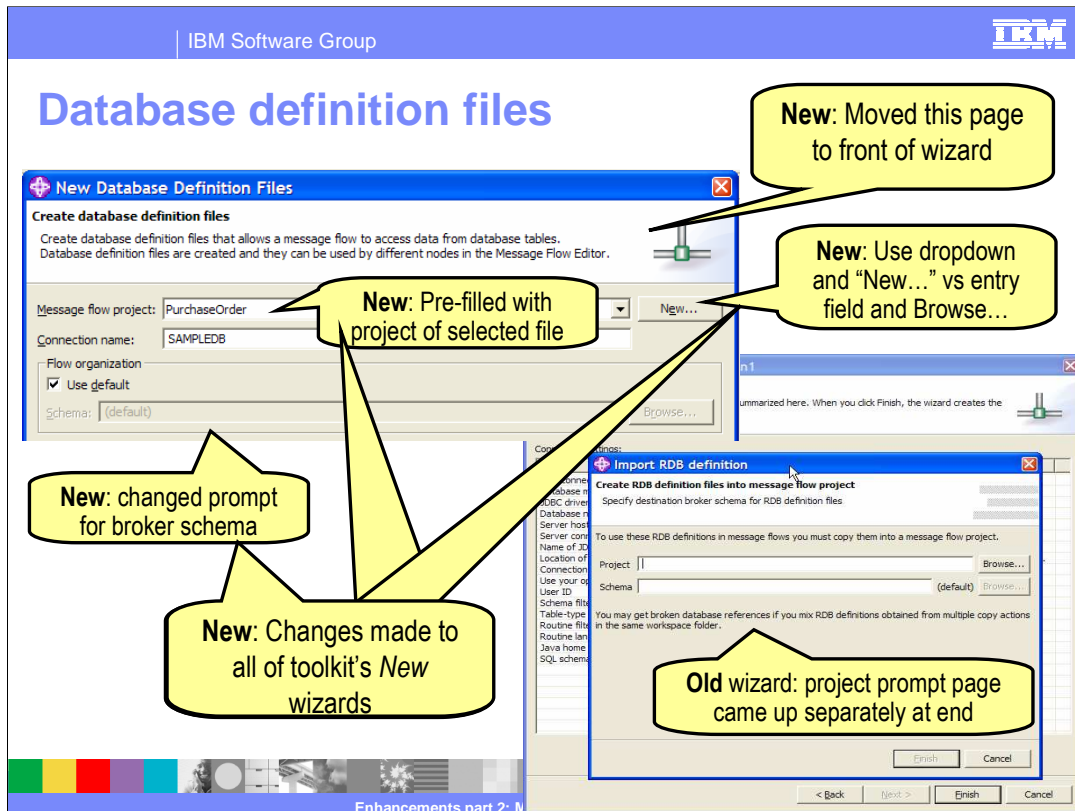
Databases

This section discusses changes to database handling in the toolkit.

Database connection



When creating a new database definition file, you are shown only the objects applicable for the current working set. Note that RDB Definition files has been renamed Database Definition Files.



This screen capture shows creating a database definition file. Note the differences between the V6.0.2 wizard and the V6 wizard shown here.

Database in navigator

The screenshot shows the IBM Broker Development Navigator interface. The active working set is 'PurchaseOrder'. The tree view is expanded to show the 'Database Connections' category, which contains a list of database tables. Two callout boxes highlight specific elements:

- A callout box labeled "New: Database Connections category" points to the 'Database Connections' folder in the tree.
- A callout box labeled "The table you are interested in" points to the 'SAMPLEDB_SAMPLE_PURCHASEORDER.tblxmi' table in the list.

The tree view includes the following items:

- Flows (default broker schema)
 - PurchaseOrderFlow.msgflow
- gen
- Database Connections (default broker schema)
 - SAMPLEDB_conxmi
 - SAMPLEDB_SAMPLEDB.dbxmi
 - SAMPLEDB_SAMPLEDB_NULLID.schxmi
 - SAMPLEDB_SAMPLEDB_SAMPLE.schxmi
 - SAMPLEDB_SAMPLEDB_SAMPLE_CREDITTB.tblxmi
 - SAMPLEDB_SAMPLEDB_SAMPLE_CUSTOMER.tblxmi
 - SAMPLEDB_SAMPLEDB_SAMPLE_INVENTORY.tblxmi
 - SAMPLEDB_SAMPLEDB_SAMPLE_ITEMS.tblxmi
 - SAMPLEDB_SAMPLEDB_SAMPLE_ITEMTB.tblxmi
 - SAMPLEDB_SAMPLEDB_SAMPLE_ORDERTB.tblxmi
 - SAMPLEDB_SAMPLEDB_SAMPLE_PRICETB.tblxmi
 - SAMPLEDB_SAMPLEDB_SAMPLE_PURCHASEORDER.tblxmi
 - SAMPLEDB_SAMPLEDB_SQLJ.schxmi
- gen
- SAMPLEDB_SAMPLEDB.rlconxmi
- PurchaseOrderMessageSet
 - PurchaseOrderMessageSet
 - messageSet.mset
 - Message Definitions
 - com.acmeorders.www.customerinfo
 - com.acmeorders.www.orderservice
 - com.acmeorders.www.partsinfo
 - com.acmeorders.www.shippingervice
 - org.xmlsoap.schemas.soap.envelope
- importFiles
- log

13

Enhancements part 2: Message sets and databases © 2007 IBM Corporation

After completing the database connection the navigator shows the database tables.

Feedback

Your feedback is valuable

You can help improve the quality of IBM Education Assistant content to better meet your needs by providing feedback.

- Did you find this module useful?
- Did it help you solve a problem or answer a question?
- Do you have suggestions for improvements?

Click to send e-mail feedback:

[mailto:iea@us.ibm.com?subject= Feedback about Toolkit2.message sets and databases.ppt](mailto:iea@us.ibm.com?subject=Feedback%20about%20Toolkit2.message%20sets%20and%20databases.ppt)



You can help improve the quality of IBM Education Assistant content by providing feedback.

Trademarks, copyrights, and disclaimers

The following terms are trademarks or registered trademarks of International Business Machines Corporation in the United States, other countries, or both:

IBM WebSphere

Product data has been reviewed for accuracy as of the date of initial publication. Product data is subject to change without notice. This document could include technical inaccuracies or typographical errors. IBM may make improvements or changes in the products or programs described herein at any time without notice. Any statements regarding IBM's future direction and intent are subject to change or withdrawal without notice, and represent goals and objectives only. References in this document to IBM products, programs, or services does not imply that IBM intends to make such products, programs or services available in all countries in which IBM operates or does business. Any reference to an IBM Program Product in this document is not intended to state or imply that only that program product may be used. Any functionally equivalent program, that does not infringe IBM's intellectual property rights, may be used instead.

Information is provided "AS IS" without warranty of any kind. THE INFORMATION PROVIDED IN THIS DOCUMENT IS DISTRIBUTED "AS IS" WITHOUT ANY WARRANTY, EITHER EXPRESS OR IMPLIED. IBM EXPRESSLY DISCLAIMS ANY WARRANTIES OF MERCHANTABILITY, FITNESS FOR A PARTICULAR PURPOSE OR NONINFRINGEMENT. IBM shall have no responsibility to update this information. IBM products are warranted, if at all, according to the terms and conditions of the agreements (for example, IBM Customer Agreement, Statement of Limited Warranty, International Program License Agreement, etc.) under which they are provided. Information concerning non-IBM products was obtained from the suppliers of those products, their published announcements or other publicly available sources. IBM has not tested those products in connection with this publication and cannot confirm the accuracy of performance, compatibility or any other claims related to non-IBM products.

IBM makes no representations or warranties, express or implied, regarding non-IBM products and services.

The provision of the information contained herein is not intended to, and does not, grant any right or license under any IBM patents or copyrights. Inquiries regarding patent or copyright licenses should be made, in writing, to:

IBM Director of Licensing
IBM Corporation
North Castle Drive
Armonk, NY 10504-1785
U.S.A.

Performance is based on measurements and projections using standard IBM benchmarks in a controlled environment. All customer examples described are presented as illustrations of how those customers have used IBM products and the results they may have achieved. The actual throughput or performance that any user will experience will vary depending upon considerations such as the amount of multiprogramming in the user's job stream, the I/O configuration, the storage configuration, and the workload processed. Therefore, no assurance can be given that an individual user will achieve throughput or performance improvements equivalent to the ratios stated here.

© Copyright International Business Machines Corporation 2007. All rights reserved.

Note to U.S. Government Users - Documentation related to restricted rights-Use, duplication or disclosure is subject to restrictions set forth in GSA ADP Schedule Contract and IBM Corp.

