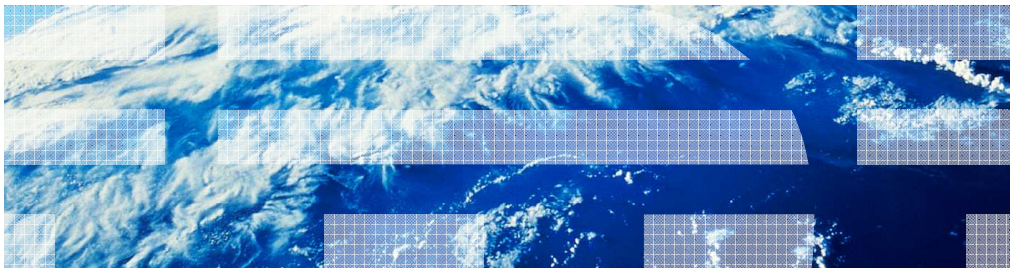


---

# WebSphere Business Compass:

## Import and export



© 2010 IBM Corporation

This presentation will show you the import and export functions available with WebSphere Business Compass.

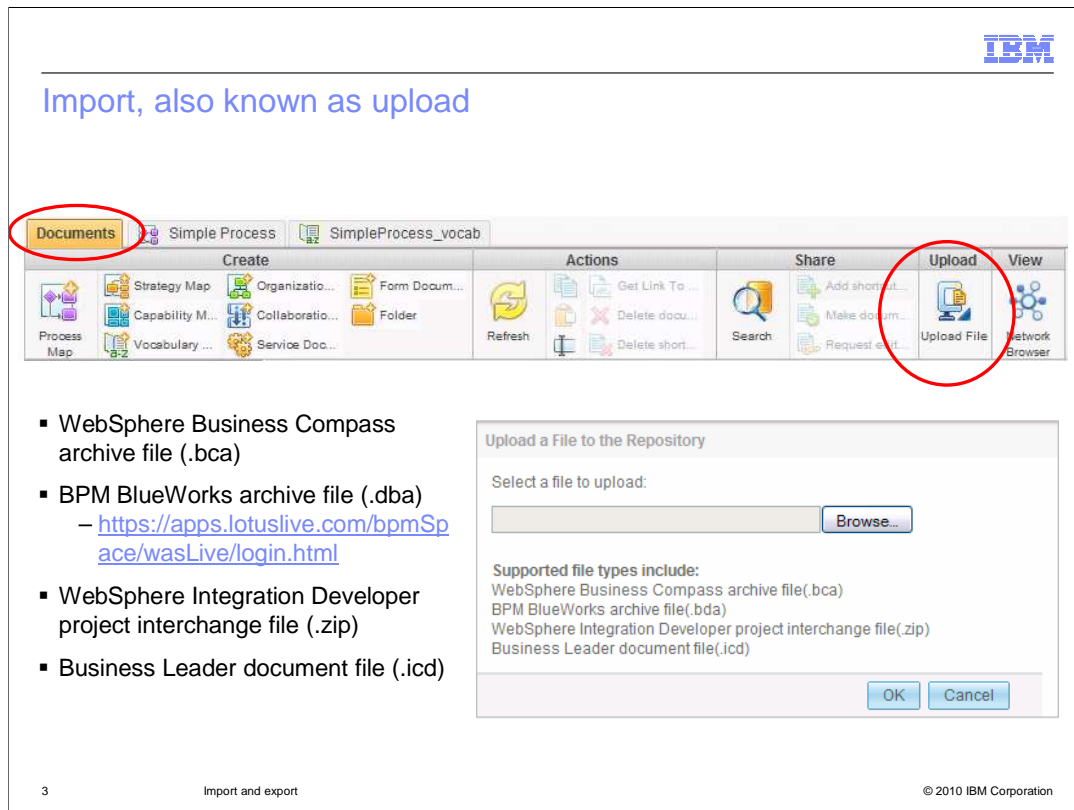
## Table of contents

- Importing modeling artifacts
- Exporting modeling artifacts
- Summary



Importing modeling artifacts, such as models, documents, business services and business vocabularies are covered first.

Exporting modeling artifacts is discussed next



The upload function is found on the toolbar on the documents page in the design view.

The purpose of the upload feature is to bring documents, models, maps, services and vocabularies that were developed on some other system, into the current WebSphere Business Compass.

As you can see from the list of file types that can be uploaded, migrating from previous versions and other systems is supported.

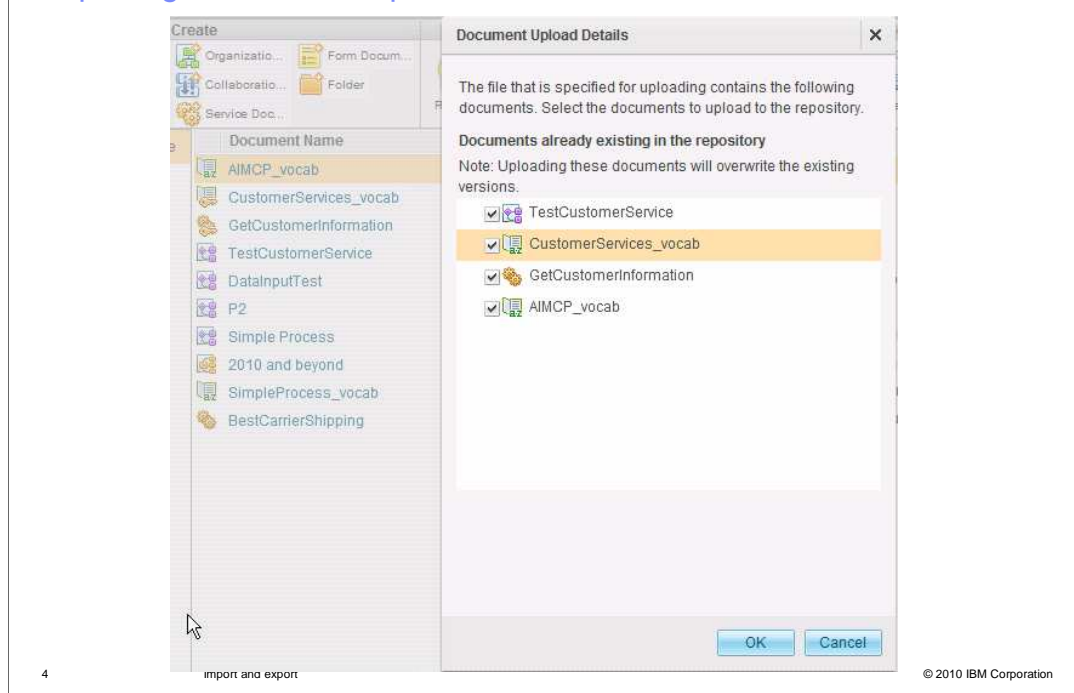
The WebSphere Business Compass archive is the file type used when sharing between two different Compass installations. It might be that a colleague has their own WebSphere Business Compass installed, which you cannot log into. They can export their model and all related documents into a single archive which you can then upload into your installation.

The IBM BPM BlueWorks is a publicly available Web site where anyone can register and learn more about business process management and collaborate with other practitioners.

Documents and models that are created there, can be exported and uploaded into WebSphere Business Compass.

The third file type, the WebSphere Integration Developer project interchange format, is used to import business services and business vocabularies that are created in WebSphere Integration Developer into WebSphere Business Compass.

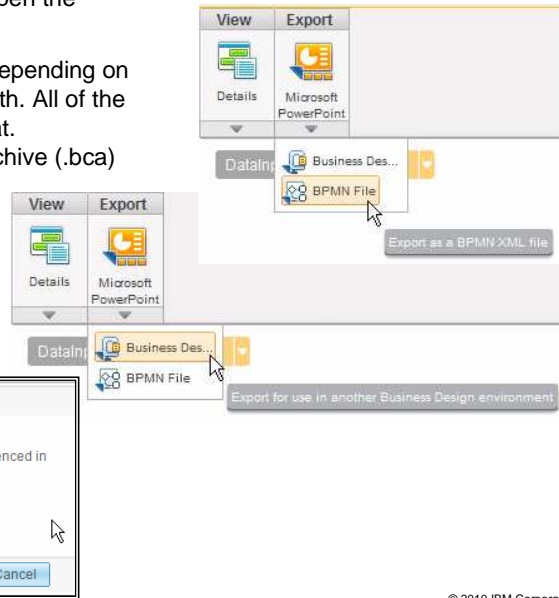
## Importing business compass archives



When invoking the upload function, you are given an opportunity to select the individual documents in the package being up loaded. If the documents already exist in your Compass design space, you are given the option to overwrite the existing documents or not.

## Exporting

- To export a document, you must first open the document
- There several export types available, depending on the kind of document you're working with. All of the document types support the .bca format.
  - WebSphere Business Compass archive (.bca)
  - Export as a BPMN XML file (.xml)
- Microsoft Power Point is only for
  - Process maps
  - Strategy maps
  - Capability maps
  - Collaboration diagrams



5

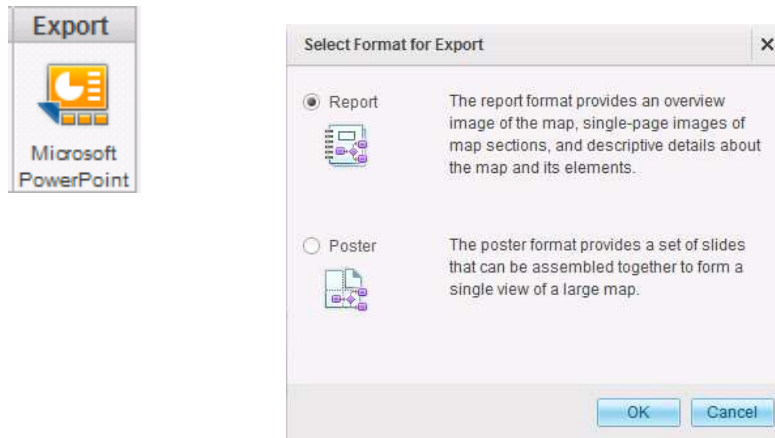
© 2010 IBM Corporation

Before you can export a document you must first open the document, either in view or edit mode.

The most commonly used export type is the WebSphere Business Compass archive. This format is used to move models and documents from one system to another or for general back up. If you look at the dialog in the inset, you'll see that there is an option to export a single document or all documents that it references. Generally you'll start out with a strategy document and work your way out from there. The strategy links to business measures and process maps, which in turn link to business services and vocabulary entries. With the proper linkages you can export your entire project by exporting the strategy map, or any other document you choose to represent the top level of your system.

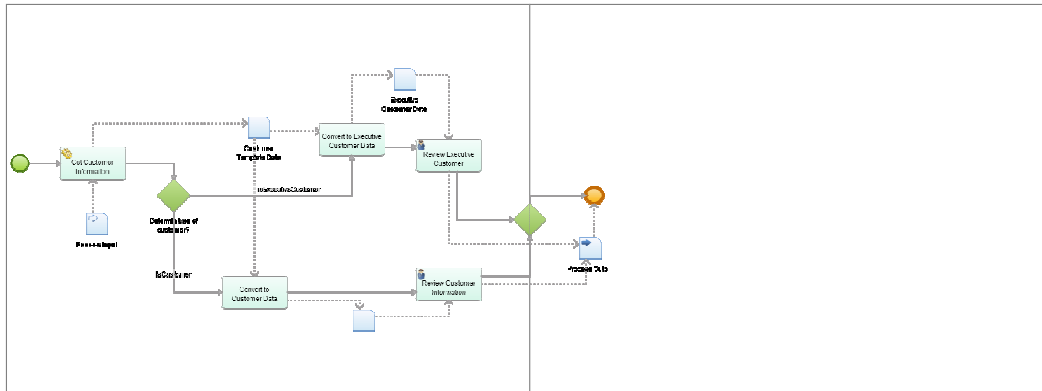
There is one more type of export, which is discussed on the next page. This is the Microsoft Power point export.

## Microsoft Power Point export



The report format provides more details about the documents and document elements. Whereas the poster format will give you the graphical information so that you can make a nice wall chart

## Example of the poster format



- Shown here is the diagram overview for a process map. It is scaled down in order to fit it on a page.
- There are other views that zoom-in to bring out the details.
  - The pages can then be pasted together to form a large continuous picture

Here is the overview diagram for a business process that has been exported to Microsoft Power Point using the poster format. There is a separate page for each of the sections shown here. In this case there are only two pages. The individual pages are scaled so that you can read the detail and they are aligned so that you can paste them together to make a single wall poster.

TestCustomerService <span style="float: right;"><a href="#">Overview</a></span>	
<b>Process   TestCustomerService</b>	
Service Task: Get Customer Information	<b>Inputs:</b> Data Input (CustomerTemplate) <b>Outputs:</b> Data Output (CustomerTemplate)
Exclusive Gateway: Determin type of customer?	
Task: Convert to Customer Data	<b>Inputs:</b> Data Input (CustomerTemplate) <b>Outputs:</b> Data Output (Customer)
Task: Convert to Executive Customer Data	<b>Inputs:</b> Data Input (CustomerTemplate) <b>Outputs:</b> Data Output (ExecutiveCustomer)
User Task: Review Executive Customer Information	<b>Performers:</b> Tester1 (AIMCP_vocab) <b>Inputs:</b> Data Input (ExecutiveCustomer) <b>Outputs:</b> Data Output (Boolean)
Import and export <span style="float: right;">8</span>	
5	

This example shows some of the output when using the report format.

Shown here is the detailed information on the process tasks and other modeling elements. You can see the inputs and outputs to the tasks and the type of data being used for each. In the case of the user-task, you can also see the performers and the vocabulary where they are defined.



## Summary

- Importing modeling artifacts
- Exporting modeling artifacts
- Summary



In this presentation you learned about the different import formats and how to import and export documents and models.

You learned that you can import models from other WebSphere Business Compass system, IBM BPM BlueWorks and Business Leader widgets.

You also saw how you can export your modeling projects to Microsoft power point, using either the report or the poster format.



## Feedback

Your feedback is valuable

You can help improve the quality of IBM Education Assistant content to better meet your needs by providing feedback.

- Did you find this module useful?
- Did it help you solve a problem or answer a question?
- Do you have suggestions for improvements?

Click to send e-mail feedback:

[mailto:iea@us.ibm.com?subject=Feedback about WBPMv70 Export Import.ppt](mailto:iea@us.ibm.com?subject=Feedback%20about%20WBPMv70%20Export%20Import.ppt)

This module is also available in PDF format at: [../WBPMv70 Export Import.pdf](http://www.ibm.com/education/wbpm/v70/export_import.pdf)

You can help improve the quality of IBM Education Assistant content by providing feedback.



## Trademarks, disclaimer, and copyright information

IBM, the IBM logo, ibm.com, and WebSphere are trademarks or registered trademarks of International Business Machines Corp., registered in many jurisdictions worldwide. Other product and service names might be trademarks of IBM or other companies. A current list of other IBM trademarks is available on the Web at "[Copyright and trademark information](http://www.ibm.com/legal/copytrade.shtml)" at <http://www.ibm.com/legal/copytrade.shtml>

THE INFORMATION CONTAINED IN THIS PRESENTATION IS PROVIDED FOR INFORMATIONAL PURPOSES ONLY. WHILE EFFORTS WERE MADE TO VERIFY THE COMPLETENESS AND ACCURACY OF THE INFORMATION CONTAINED IN THIS PRESENTATION, IT IS PROVIDED "AS IS" WITHOUT WARRANTY OF ANY KIND, EXPRESS OR IMPLIED. IN ADDITION, THIS INFORMATION IS BASED ON IBM'S CURRENT PRODUCT PLANS AND STRATEGY, WHICH ARE SUBJECT TO CHANGE BY IBM WITHOUT NOTICE. IBM SHALL NOT BE RESPONSIBLE FOR ANY DAMAGES ARISING OUT OF THE USE OF, OR OTHERWISE RELATED TO, THIS PRESENTATION OR ANY OTHER DOCUMENTATION. NOTHING CONTAINED IN THIS PRESENTATION IS INTENDED TO, NOR SHALL HAVE THE EFFECT OF, CREATING ANY WARRANTIES OR REPRESENTATIONS FROM IBM (OR ITS SUPPLIERS OR LICENSORS), OR ALTERING THE TERMS AND CONDITIONS OF ANY AGREEMENT OR LICENSE GOVERNING THE USE OF IBM PRODUCTS OR SOFTWARE.

© Copyright International Business Machines Corporation 2010. All rights reserved.