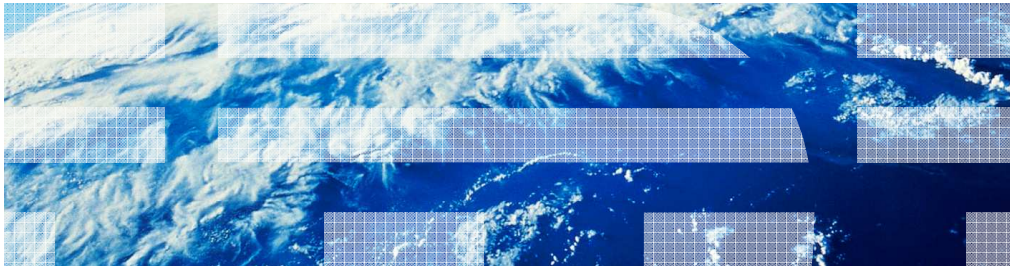


# WebSphere Business Compass Server V7.0

## Business Reviewing Space administration

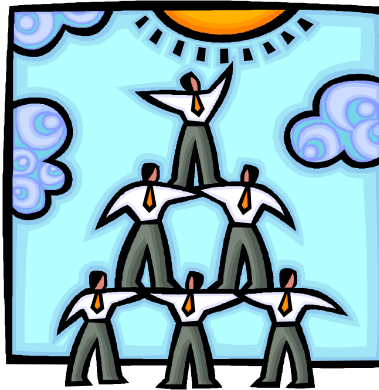


© 2010 IBM Corporation

This presentation provides an introduction to the administration functions of WebSphere Business Compass Server V7.0 that are specific to the Reviewing space that provides the publishing server functionality.

## Goal

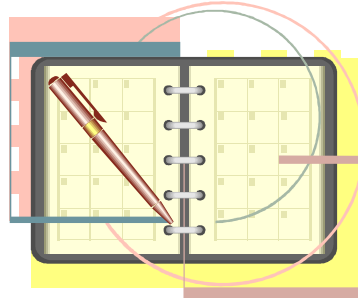
- Provide details about managing users and projects in WebSphere Business Compass Reviewing space.
  - The Reviewing space provides the business model publishing functionality for the WebSphere Business Modeler.



The goal is to provide the basic information needed to configure your users and groups to be used with the WebSphere Business Compass Reviewing space.

## Agenda

- Classes of user
- Review access control
- Review manager
- Publishing models



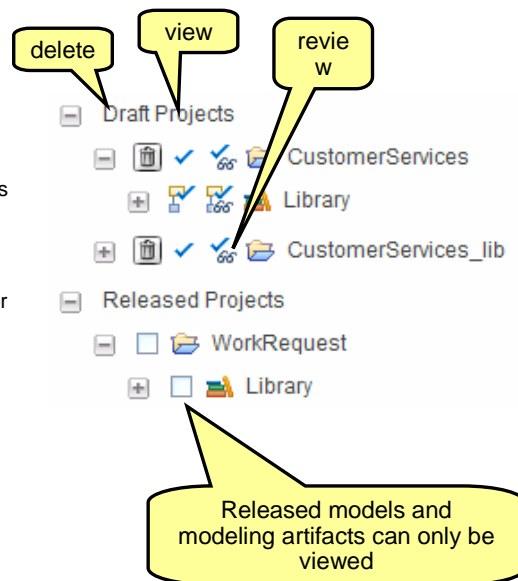
This presentation discusses the application specific administration of the reviewing business space.

Before diving into the details of the access control, you will first need to learn a little about the kind of users and what they can and cannot do.

After learning about who can use the system the discussion will move to how to manage the models and modeling artifacts that will begin to accumulate over the life time of your projects.

## Classes of users

- Users
  - Inspect draft models and modeling artifacts
  - Review and comment of draft models and modeling artifacts
  - Inspect released models and modeling artifacts
- Publishers
  - Publish models from WebSphere Business Modeler to the Reviewing space
  - A publisher does not automatically have view or review privileges on elements that they publish
- Administrators
  - The owner of the business space is an administrator by default
  - Can administer the access privileges for other users to inspect, review and or publish
  - Can release and delete projects using the *Review Manager* widget



As a new business space owner, you need to make sure that the users and groups you need to work with have access to your business space.

Next you need to assign an alternate administrator.

A publishing server administrator manages the content in the Draft Artifacts widget or the Released Artifacts widget and manages access to these widgets.

Managing content involves releasing all the published projects and deleting data for a project by deleting the entire project or a single element.

Managing user access involves setting user permissions through assigning the user to a group with specific permissions or by assigning permissions to the user directly.

After one or more backup administrators have been identified you then need to decide who can publish the Draft Artifacts to the reviewing business space. The publishing privilege is required for configuring the connection to the reviewing space from WebSphere Business Modeler. If the person attempting to setup the connection does not have the publishing privilege, they will not see the reviewing space from the modeler connection wizard.

A publisher is a person who has been assigned the role of publisher for the space in the Review Access Control widget and uses WebSphere Business Modeler.

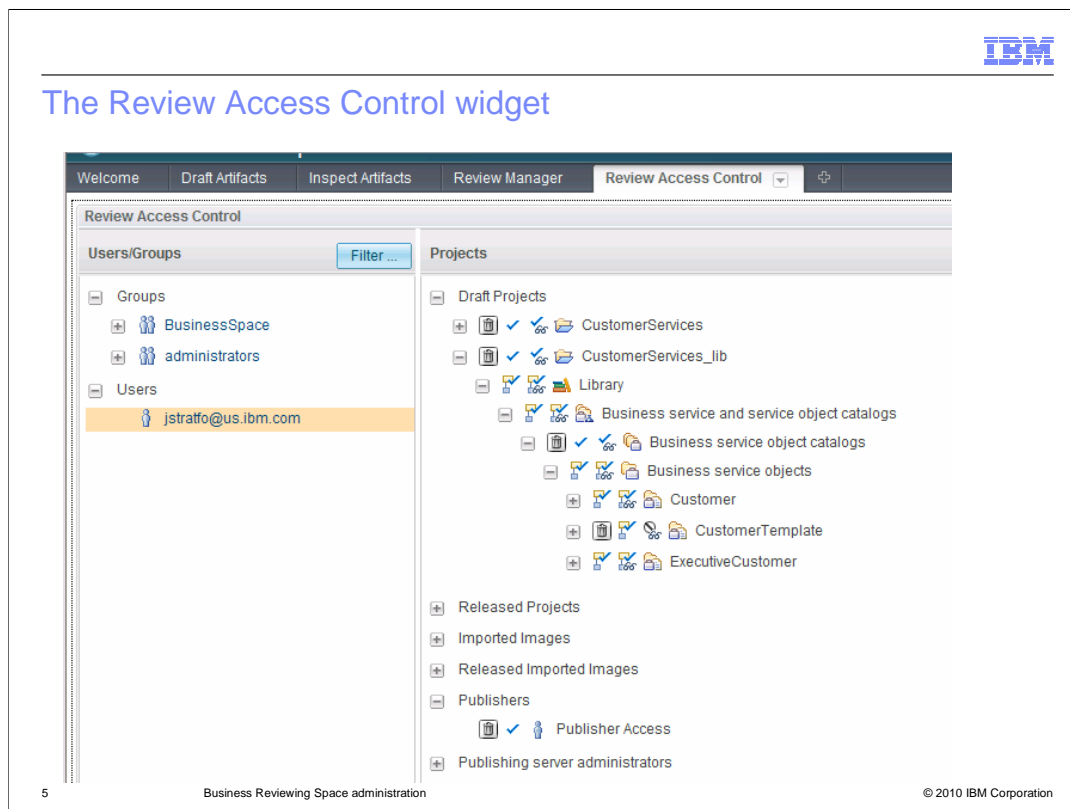
The publisher identifies which publishing server and space will host the business process being reviewed, what parts of the process is published, and then sends the information to the reviewing business space.

Note: the publisher does not automatically have view or review privileges on the artifacts they publish. If the publisher is also a reviewer or viewer, they need to be given the privileges after the artifacts have been published. No one can be given privileges until after the artifacts have been published.

Last but not least, is the user. The user is someone that is either reviewing or viewing draft artifacts or viewing the released artifacts. The privileges that the currently selected user or group has is indicated by the check box in the appropriate column. The trash can icon in the first column on the left, is not to delete the artifact, but rather to delete the current set of privileges. It is only displayed where it is needed based on privileges currently selected.

One last thing before moving on. Since it is read only by nature, the released projects only has one selection check box for setting viewers.

## The Review Access Control widget



Shown here is the overall view of the Review Access Control widget. There are two sections, the users and groups on the left and the Projects on the right.

Some of the project elements have been expanded to show the fine-grained level of control available with the application security model for the Reviewing business space.

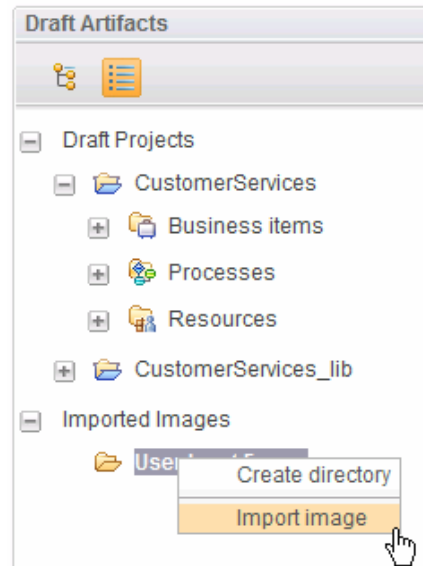
You can also see that the currently selected user is also a publisher with privileges on almost all of the draft artifacts. If you elect to give a user privileges at the higher level, they are automatically given the privileges for the lower level. Don't forget about the groups, they work the same way as users. You can even expand the groups, and give or remove privileges for specific users in the group. You will want to use groups to manage the privileges on your projects efficiently.

From the screen capture you can't tell that there are no currently released projects until you expand that section.

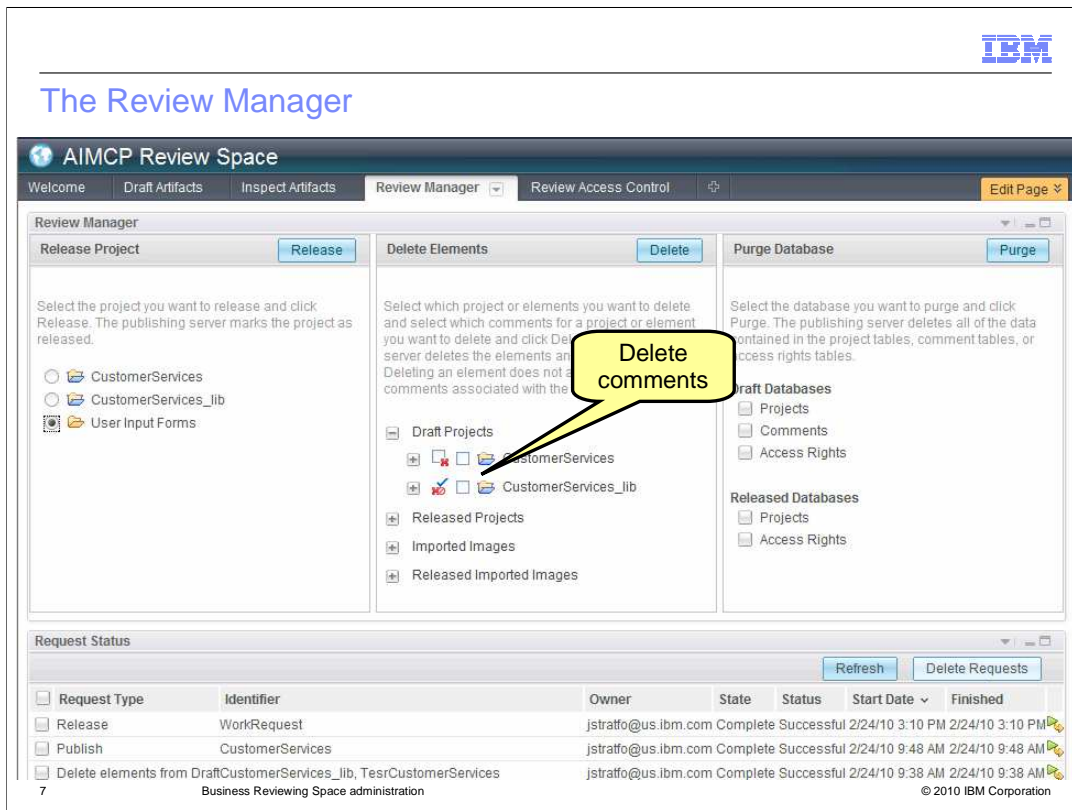
There are two more classes of project artifacts that deserve mention, the imported images and the released imported images. These are covered in the next slide

## Importing images

- Screen captures of
  - User input forms
  - Monitor dashboards
- Imported from the Drafts Artifacts
- Must create the folder before importing
- Released using the *Review Manager*
- Formats
  - GIF
  - JPG or JPEG
  - PNG



You can also import images of forms and WebSphere Business Monitor dashboards so that they are available for other people to see and review.



The review manager page is where you, as an administrator go to promote projects to a released state or to delete project artifacts that are no longer required.

Promoting projects to the released status is an all or nothing proposition and you can only do one at a time. Notice that the “user input forms” is not directly associated with a project.

The ‘delete documents’ section in the center allows you to select and delete specific elements. Sometimes the person publishing the project will publish everything and you later learn that only a specific part of the project is required for review. Here you can delete the part that is not needed, saving space on the server and simplifying the review process for the reviewers. In the example shown here, the CustomerServices\_lib is about to be deleted. The second check box, the one on the right, is so you can delete all the comments associated with the selected element. As part of the review process, you’ve captured all the comments and want to start a new review cycle. You can do this by deleting only the comments, leaving the project or elements for further review.

The section on the far right, “Purge Database”, is for cleaning up, when you want to start new and fresh. There are database tables defined for projects, comments and access rights. You can clear out those tables with a click of a button.

The bottom section of the page displays a running list of all the operations that have been done along with their status. The status is important because you might have a very busy server. Some of the operations, such as publish, can take a little longer than expected. The status section also gives you the historical record of who did what, and when.

## Configuring the publishing server from WebSphere Business Modeler

The user must have 'Publisher' privilege for the business space being used

[more information on https configuration](#)

The key store from the server must be imported into modeler

8 Business Reviewing Space administration © 2010 IBM Corporation

The WebSphere Business Modeler and the Compass Reviewing business space are closely linked. The models that are published and reviewed come from WebSphere Business Modeler and are published to the reviewing business space. Before a model or project can be published, WebSphere Business Modeler must know where the server is, and the business space to be used.

The reviewing space needs to know who is trying to connect to it.

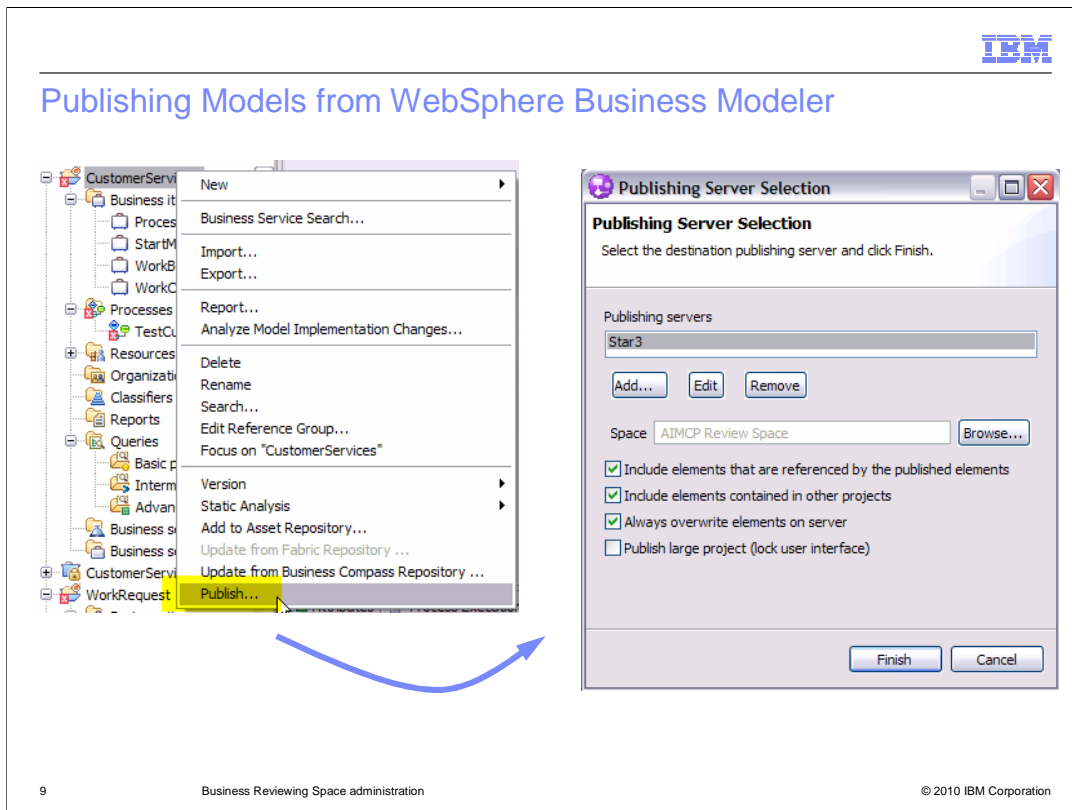
In modeler connection information is specified using the preferences as shown in the screen capture on the left. Look for 'publisher' in the Business Modeling section. Using the 'add' or 'edit' button will invoke the 'new server' dialog, shown on the right. This shows the information you'll need to know, before, trying to setup the connection.

There are two important points to make here.

First, the user specified here must already have publishing privileges for the business space to be used. If this is not the case, then when the browse button is used, the list of possible business spaces is empty.

Second, even though the server is secure, you don't need to use https unless you know for a fact that SSL is configured and required. If this is the case, then you need to extract the keystore from the server and import it into the modeler client. This is described in the WebSphere Business Modeler information center.





After the connection information has been specified in the preferences, you can then start publishing to the Compass reviewing business space.

There are several options available. The options are;

Include elements that are referenced by the published elements.

If you are publishing one or more elements from a project but not the complete project, you can set whether to include other elements that your selected elements reference.

Typically, you will clear this check box if you are updating specific elements on the server and you do not want to update the referenced elements.

Include elements contained in other projects.

Typically, you will clear this check box if you are publishing projects individually or you want to limit the amount of information that is being published in one session. Note that if you publish an element that refers to an element in a different project, the link to the other element resolves when you publish that element.

Always overwrite elements on the server.

Unless you want to specify which elements you want to overwrite or you do not want to overwrite any elements,

select the “Always overwrite elements” on the server check box.

Publish a large project, and lock the user interface.

Optional: If you are publishing a large project, enable Publish large project. If you select this option, WebSphere Business Modeler closes all open editors and locks its user interface while it compiles the information it sends to the publishing server. After it has compiled the information, WebSphere Business Modeler unlocks its user interface.

## Summary

- Classes of user
- Review access control
- Review manager
- Publishing models



In this presentation you learned how to administer users and documents for the reviewing business space.

You learned that there are specific classes of users, such as, administrators, viewers, and reviewers.

You got to see what the duties of the administrator are and how to manage the users and documents.

Finally, you learned how to define the connection to the reviewing server from WebSphere Business Modeler and to publish part or all of a project.



## Feedback

Your feedback is valuable

You can help improve the quality of IBM Education Assistant content to better meet your needs by providing feedback.

- Did you find this module useful?
- Did it help you solve a problem or answer a question?
- Do you have suggestions for improvements?

Click to send e-mail feedback:

[mailto:iea@us.ibm.com?subject=Feedback about WBPMv70 Reviewing Admin.ppt](mailto:iea@us.ibm.com?subject=Feedback%20about%20WBPMv70%20Reviewing%20Admin.ppt)

This module is also available in PDF format at: [../WBPMv70\\_Reviewing\\_Admin.pdf](..WBPMv70_Reviewing_Admin.pdf)

You can help improve the quality of IBM Education Assistant content by providing feedback.



## Trademarks, disclaimer, and copyright information

IBM, the IBM logo, ibm.com, and WebSphere are trademarks or registered trademarks of International Business Machines Corp., registered in many jurisdictions worldwide. Other product and service names might be trademarks of IBM or other companies. A current list of other IBM trademarks is available on the Web at "[Copyright and trademark information](http://www.ibm.com/legal/copytrade.shtml)" at <http://www.ibm.com/legal/copytrade.shtml>

THE INFORMATION CONTAINED IN THIS PRESENTATION IS PROVIDED FOR INFORMATIONAL PURPOSES ONLY. WHILE EFFORTS WERE MADE TO VERIFY THE COMPLETENESS AND ACCURACY OF THE INFORMATION CONTAINED IN THIS PRESENTATION, IT IS PROVIDED "AS IS" WITHOUT WARRANTY OF ANY KIND, EXPRESS OR IMPLIED. IN ADDITION, THIS INFORMATION IS BASED ON IBM'S CURRENT PRODUCT PLANS AND STRATEGY, WHICH ARE SUBJECT TO CHANGE BY IBM WITHOUT NOTICE. IBM SHALL NOT BE RESPONSIBLE FOR ANY DAMAGES ARISING OUT OF THE USE OF, OR OTHERWISE RELATED TO, THIS PRESENTATION OR ANY OTHER DOCUMENTATION. NOTHING CONTAINED IN THIS PRESENTATION IS INTENDED TO, NOR SHALL HAVE THE EFFECT OF, CREATING ANY WARRANTIES OR REPRESENTATIONS FROM IBM (OR ITS SUPPLIERS OR LICENSORS), OR ALTERING THE TERMS AND CONDITIONS OF ANY AGREEMENT OR LICENSE GOVERNING THE USE OF IBM PRODUCTS OR SOFTWARE.

© Copyright International Business Machines Corporation 2010. All rights reserved.