



IBM Software Group

IBM WebSphere Application Server V7.0 Feature Pack for Service Component Architecture V1.0.1

Installation



@business on demand.

© 2009 IBM Corporation
Updated November 16, 2009

This presentation describes how to use IBM Installation Manager to install the IBM WebSphere® Application Server Feature Pack for Service Component Architecture.

Agenda

- Supported software
- Installation process



The first section describes the supported software that you can use with the feature pack for SCA, and the second section describes the feature pack installation process.

Section

Supported software



This section describes the software that is supported with SCA feature pack, including supported operating systems and Web browsers.

Required software

- The IBM WebSphere Application Server Feature Pack for Service Component Architecture runs on WebSphere Application Server V7
 - ▶ Fix Pack 7 or later is required, including both application server and SDK packages
- IBM Installation Manager 1.3.3 or later is required to install, update, and uninstall the feature pack
- Supported browsers
 - ▶ Firefox 3.0
 - ▶ Internet Explorer® 7.0
 - ▶ Safari 3.2
 - ▶ Chrome 1.0

The Feature Pack for SCA runs on top of WebSphere Application Server V7. A minimum maintenance level of Fix Pack 7 – including both the application server and SDK fix packages – is required. WebSphere Application Server maintenance needs to be applied using the WebSphere Update Installer. You also need to have IBM Installation Manager 1.3.3 or newer to be able to install the feature pack. The WebSphere Application Server Feature Pack for Service Component Architecture is supported on these browsers: Firefox 3.0, Internet Explorer 7.0, Safari 3.2, and Google Chrome 1.0.

Supported platforms and browsers

- Supported platforms
 - ▶ The feature pack supports the same operating systems as WebSphere Application Server V7
 - Only silent installation is available on Solaris and HP-UX
 - Installation on z/OS® does not use the Installation Manager
- Supported hardware
 - ▶ See the WebSphere Application Server V7 support pages for hardware support information



The Feature Pack for SCA is supported on all of the same operating systems as WebSphere Application Server V7. The supported hardware is also the same as WebSphere Application Server V7. On Solaris and HP-UX, only silent installation is supported with the Installation Manager. On z/OS, the installation process does not use the Installation Manager. Instead, the product is installed by applying the required PTFs.

Section

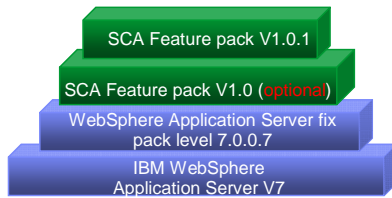
Installation process



This section describes the process for installing the Feature Pack for SCA using IBM Installation Manager.

SCA feature pack installation layout

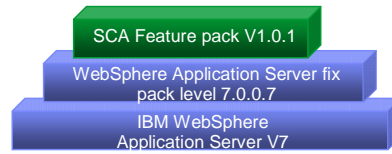
A)



SCA feature pack can be upgraded from SCA feature pack V1.0 on WebSphere application Server 7.0.0.7

OR

B)



SCA feature pack SCA V1.0.1 can be installed directly on WebSphere Application Server 7.0.0.7

SCA feature pack sits on top of WebSphere Application Server V7. The minimum WebSphere Application server level supported for SCA feature pack V1.0.1 is 7.0.0.7. The layout is as shown. SCA feature pack V1.0.1 can be installed directly on WebSphere Application Server 7.0.0.7 or upgraded from SCA feature pack V1.0 on WebSphere Application Server 7.0.0.7. This means that if you already installed SCA feature pack V1.0, you do not need to uninstall it in order to install V1.0.1. You can install V1.0.1 on top of V1.0. - that scenario is supported.

Steps to install SCA feature pack V1.0.1

- Install WebSphere Application Server V7
- Install WebSphere Application Server Fix Pack 7.0.0.7
 - ▶ SCA Feature Pack 1.0 supported
- Install Installation Manager version 1.3.3
 - ▶ Configure the location of the product repository (optional)
- Import existing installed WebSphere Application Server into Installation Manager
- Install SCA feature pack V1.0.1 using Installation Manager
 - ▶ Optional service data object (SDO) using Installation Manager
 - (XML feature required for SDO)



SCA feature pack V1.0.1 is installed using installation manager.

First, install WebSphere Application Server V7 then install WebSphere Application Server Fix Pack 7.0.0.7

SCA Feature Pack V1.0 is also supported. If you had version 1.0 already installed, you do not need to uninstall it.

Once WebSphere Application Server is installed, download and install Installation Manager. If you are using a local repository, you need to configure the product repository location – otherwise, the remote repositories will already be configured in the Installation Manager. Import the existing installed WebSphere Application Server into Installation Manager. Finally, install the SCA feature pack V1.0.1 using Installation Manager. Note that during this installation, you have the option to install the optional service data object runtime. However, since the XML feature pack is required for SDO, you must install the XML feature pack first. You install the XML feature pack using Installation Manager during SCA feature pack installation.

For more details on Installation Manager, reference the Installation Manager overview module or the Installation Manager information center provided in the resources slide.

Install WebSphere Application Server

- Install WebSphere Application Server V7
 - ▶ Information on how to install the application server is available on IBM Education Assistant
 - ▶ Network Deployment, Base, Base Trial, Express™, Express Trial, and Developers product editions are supported
 - ▶ The Feature Pack for SCA requires application server Fix Pack 7 or later, including both application server and SDK fix packages
 - Both packages must be at the same fix pack level



You must have WebSphere Application Server V7 installed, at the appropriate maintenance level, before you can install the Feature Pack for SCA. If you need additional information about installing the application server, you can access the IBM Education Assistant module included in the references of this presentation. The feature pack is supported on the Network Deployment, Base, Express, and Developers Editions of the application server, including trial editions. You are not able to install the feature pack unless your application server installation is at least Fix Pack 7. When you install Fix Pack 7, you need to apply both the application server package and the SDK package.

Install the IBM Installation Manager

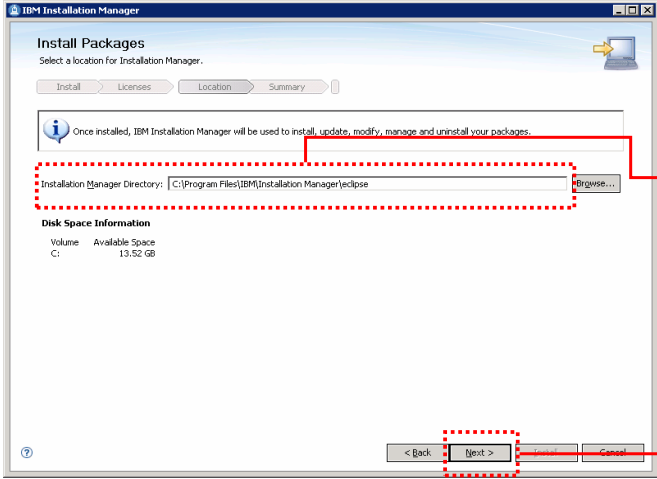
- Unpack the Installation Manager package and run the installation program, for example, install.exe
- The first page shows that you are installing the IBM Installation Manager package
- Click next
- On the next panel, accept the license agreement and click Next



To install IBM Installation Manager, download and unpack the installation Manager package and run the installation program – for example, install.exe, on Windows®. Only use the installation program if you are logged in as an administrative user – for example, Administrator on Windows or root on Linux®. Otherwise, you need to use the non-administrative user installation program, called userinst. All of the commands and example directories in this presentation assume that you are logged in and installing as an administrative user.

When you run the installation program for IBM Installation Manager, the first panel shows that you are installing the Installation Manager package at Version 1.3.3. Click **Next** on the Install Packages panel, and on the next panel, accept the license agreement and continue through the wizard.

Install the IBM Installation Manager



Recommended: Use the supplied default installation directory, for example:
C:\Program Files\IBM\Installation Manager\eclipse, or
/opt/IBM/Installation Manager/eclipse

Click **Next** to continue

Installation © 2009 IBM Corporation 11

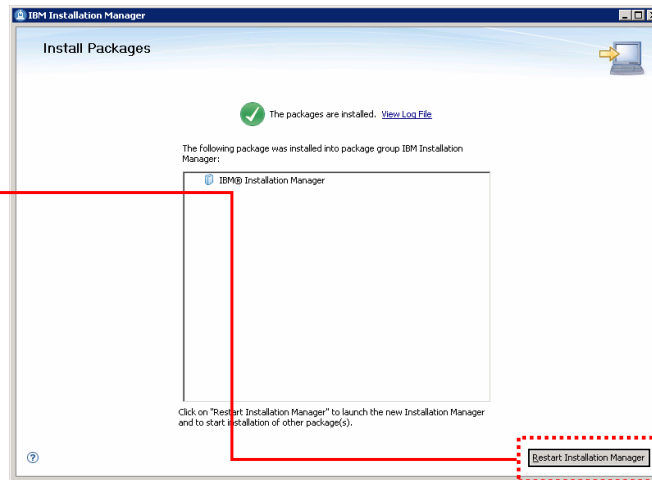
The wizard supplies a default installation directory for the Installation Manager files. It is a good practice to use the recommended default installation directory. Note that the sample directories given on this slide assume that you are installing as an administrative user. If you are installing as a non-administrative user, some user name information will also be a part of the installation path. Click Next on this panel to continue, and keep stepping through the wizard to complete the installation of the IBM Installation Manager.

Install the IBM Installation Manager

Continue through the panels to finish installing the Installation Manager

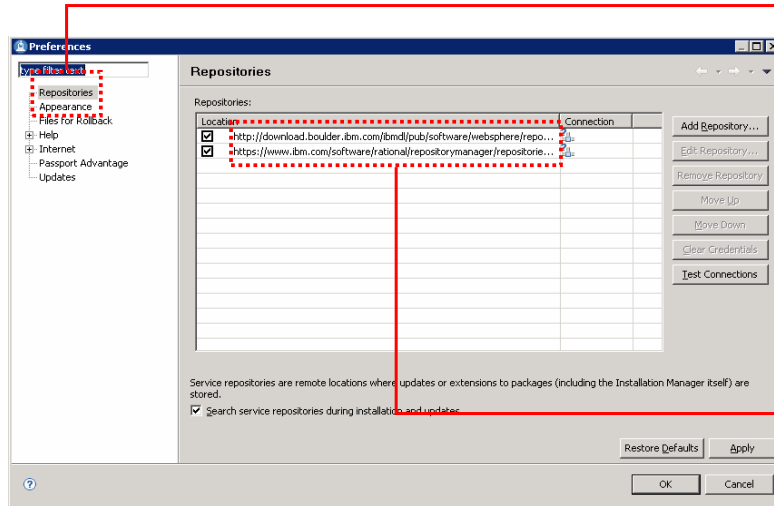
When the installation completes, restart the Installation Manager

If you are prompted to authenticate while the Installation Manager is restarting, log in with your IBM ID



When the installation completes, restart the Installation Manager by clicking the Restart Installation Manager button. While the Installation Manager is starting up, you are prompted for authentication credentials to access the preconfigured Web repository. If you are not using the Web repository, you can cancel out of the authentication panel and the Installation Manager will start, as normal. Otherwise, provide your IBM ID to authenticate to the remote repository. You can save your authentication credentials so that you do not need to log in again later to access the product repository.

Check the product repository configuration



Go to **File > Preferences > Repositories** to see the list of repositories you have configured

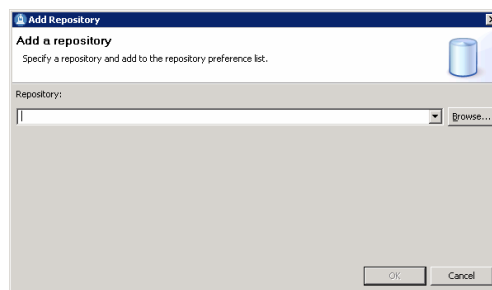
Two remote WebSphere repositories are configured by default – if you are not installing from a remote repository, you can disable these repositories



After the Installation Manager restarts, you can check what repositories you have configured. Open up the File > Preferences > Repositories menu to see your repositories. Two remote WebSphere repositories are configured by default. If you are not installing from a remote repository, you can disable these repositories by removing the check mark in the box next to each repository in the list.

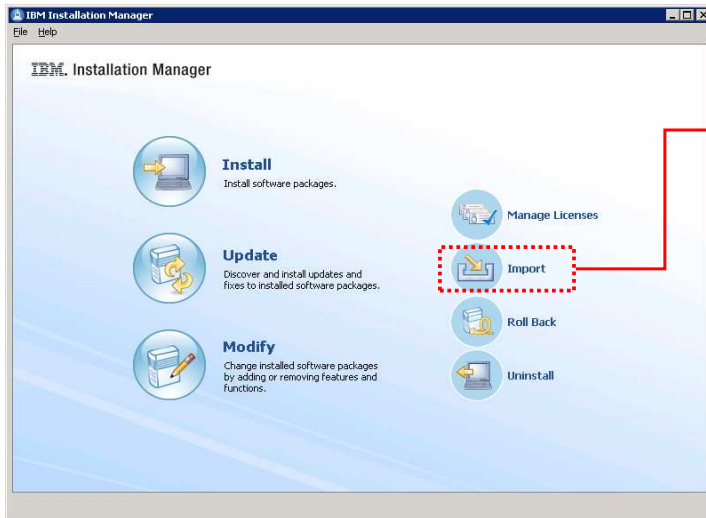
Configure a local repository (optional)

- If you are installing on a system that does not have internet access, you need to download and configure a local repository
- Download the local repository package and decompress it
- Open the **File > Preferences > Repositories** menu in the Installation Manager
- Click the **Add Repository** button
- Provide the path to the local repository in the **Add a repository** panel



If you are installing on a system that does not have internet access, you need to download and configure a local repository. Download the local repository package to your system and decompress it. From the File > Preferences > Repositories menu in the Installation Manager, click the Add Repository button. In the Add a repository panel that comes up, provide the full path to the local repository that you want to use. You can either type in the path directly or browse to the repository location. Provide the repository path up to and including the repository.config file that defines the repository.

Import the application server



Click the **Import** button to open the import wizard

The **Import** button is only visible after a WebSphere repository has been added to the repository list



Before you can use Installation Manager to install any packages on top of WebSphere Application Server, you need to import the application server into the Installation Manager. Click the Import button to open the import wizard. The Import button is only visible after a WebSphere repository has been added to the repository list. If you do not see the Import button on the main Installation Manager, check your repository configuration to be sure you are pointing to a WebSphere repository.

Import the application server

Verify the shared resources directory you want to use for this installation, then click **Next**

Provide the installation directory for the WebSphere Application Server installation you want to associate with the Installation Manager, then click **Next**

Installation

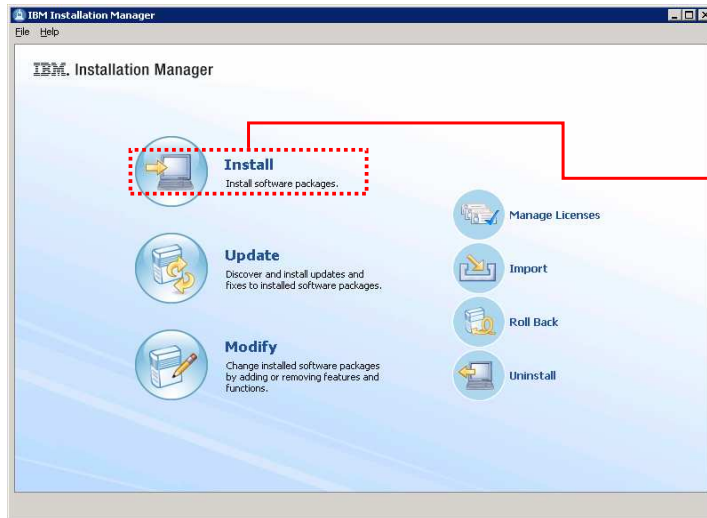
© 2009 IBM Corporation 16

To import an application server installation, you need to provide the installation directory for that instance of the application server. You can either browse to the location using a standard file selection window or type the full path into the Installation Directory field. After providing the path, click Next.

The next panel allows you to choose the shared resources directory for the Installation Manager. The shared resources directory contains files that can be shared by multiple packages. You can only select the shared resources directory the first time you install a package with the IBM Installation Manager. For best results, select the driver with the most available space because it must have adequate space for the shared resources of future packages. It is a good practice to use the recommended shared resources directory. Click Next to keep going through the import wizard.

On the import verification panel, check the settings for the application server that you are importing, then click the Import button to import the application server into the Installation Manager. When the import operation completes, click Finish on the results panel to return to the main panel of the Installation Manager.

Install the feature pack



In the Installation Manager, click **Install**

You might be prompted to authenticate with your IBM ID if you are using the remote repository



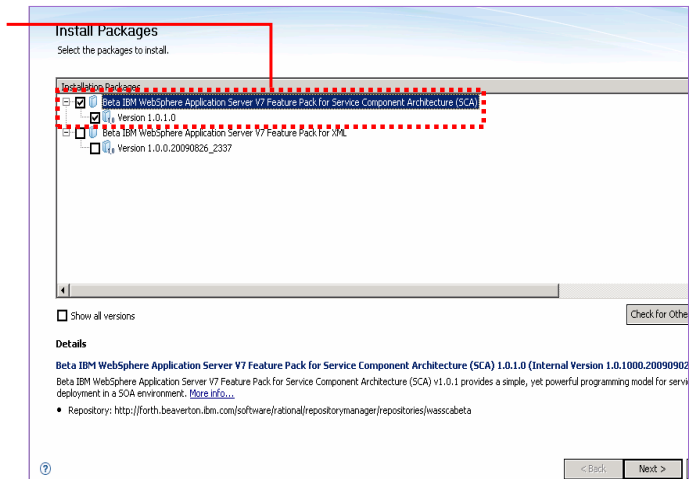
Now that the Installation Manager knows about the application server that you want to install the feature pack on top of, you can begin the Feature Pack installation. Click Install on the main panel of the Installation Manager to start the installation wizard. You might be prompted to authenticate if you are using a remote repository and do not have your authentication credentials saved. If so, authenticate with your IBM ID.

Install the feature pack

If you are connecting to the remote repository, you might see multiple packages listed

Choose the **IBM WebSphere Application Server Feature Pack for Service Component Architecture (SCA)**, and click **Next**

On the next panel, accept the license agreement and continue

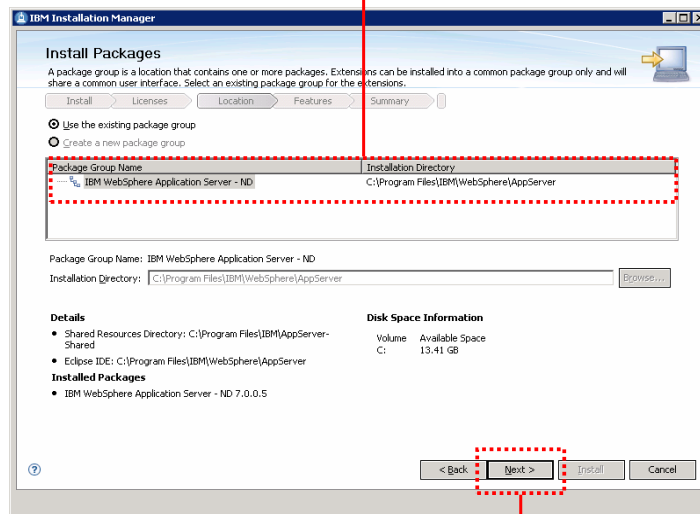


Depending on your repository configuration, you might see multiple installation packages listed on the Install Packages panel. If you are using the Web repository, you might see several feature packs included in the list, for example. Choose the IBM WebSphere Application Server Feature Pack for Service Component Architecture from the list of packages, then click next. On the next panel, accept the license agreement and continue.

Install the feature pack

- Verify that the feature pack is going to be installed into the correct package group
- This should point to the WebSphere Application Server V7 installation that you imported into the Installation Manager

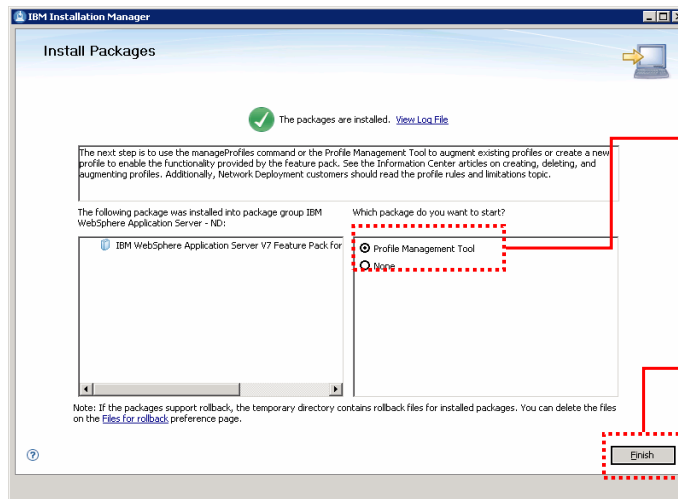
Click **Next** and continue through the panels to install the feature pack



Verify that the feature pack is going to be installed into the correct package group. This should point to the WebSphere Application Server V7 installation that you imported into the Installation Manager. Click Next and continue through the wizard to install the feature pack.

On the final Install Packages panel, verify the installation summary, then click Install to start the feature pack installation. If you are installing from a remote repository, the Installation Manager downloads only the files that you need for your operating system, based on the features that you selected to install. The time for completing the download of the product files will vary depending on the size of the download and the throughput of your network. If you would rather not wait for the product files to download during product installation, consider using a local product repository.

Install the feature pack



Optionally, choose to start the **Profile Management Tool** to perform SCA profile configuration

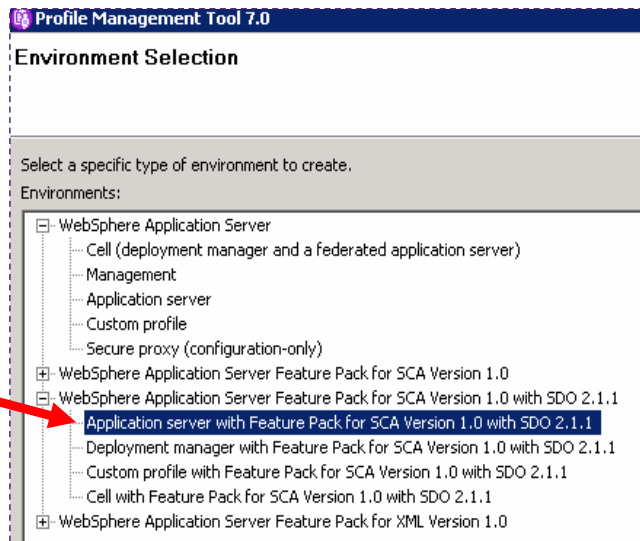
Click **Finish** to go back to the main panel of the Installation Manager



When the installation completes, a success panel similar to the one shown here is displayed in the Installation Manager. Optionally, choose to start the Profile Management Tool (PMT) to perform SCA profile configuration. The Profile Management Tool option is displayed even on platforms that do not support the PMT (for example, many 64-bit platforms); if you select to launch the PMT on any of those platforms, nothing happens. You can also choose not to do any profile configuration right away and come back later to create or augment profiles using either the PMT or the `manageprofiles` command. Click Finish to go back to the main panel of the Installation Manager.

XML feature pack (optional)

- XML feature pack is **required** for optional for SDO function
 - ▶ Installed with SCA feature pack or after with Installation Manager
- Create an SDO profile



The SDO API function is optional. If you are interested in leveraging this function, you will need to install the XML feature pack. You can install the XML feature pack during SCA feature pack installation or install it later using Installation Manager. After installing the xml feature pack, you must create an SDO profile to use the SDO feature.

Modify feature pack installation

- Use **Modify** menu to add more features to the feature pack
 - ▶ Example: Optional SDO and XML feature pack



Install the SCA feature pack optional service data objects runtime after you have already installed the feature pack. To do so, use the **Modify** function.

Modify SCA feature pack installation

Modify Packages
Changes were selected to features that will require additional actions after the change is made. Review the messages below for details.

Modify Features Summary

Beta IBM WebSphere Application Server V7
Service Data Object

Configuration for Beta IBM WebSphere Application Server V7 Feature Pack for Service Component Architecture (SCA) 1.0.1.0
Service Data Object

Attention:
You chose to make changes to the Features installed to IBM WebSphere Application Server Feature Pack for Service Component Architecture that will require additional actions after the change is made.

If you do not want to take these actions then return to the previous panel and undo the changes or click Cancel to exit this wizard.

Installing Service Data Object
If you install the Service Data Object feature, afterwards you must use the manageProfiles command or the Profile Management Tool to augment existing profiles or create a new profile to enable the functionality provided by the feature. See the Information Center articles on creating, deleting, and augmenting profiles. Additionally, Network Deployment customers should read the profile rules and limitations topic.

Removing Service Data Object
If you remove the Service Data Object feature, afterwards you must use the manageProfiles command to unaugment or delete all profiles that are augmented with support for the feature. Profiles that are unaugmented should be deleted because they might not be valid after the feature is removed.

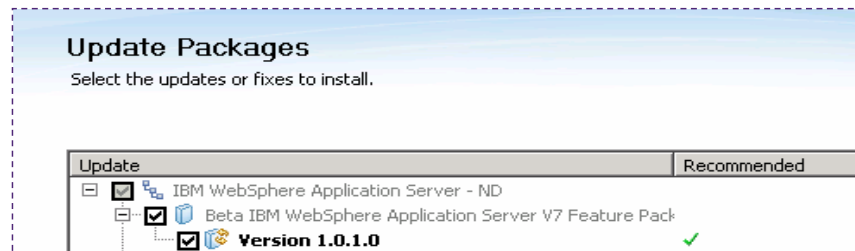
< Back Next > Modify Cancel

Installation 23 © 2009 IBM Corporation

To install the SDO feature pack, start the Installation Manager, select **Modify**, then select the package group to modify. In this case it is IBM WebSphere Application Server V7 feature pack for Service Component Architecture.

Update feature pack install

- Use **Update** menu to update the packages installed



Install the SCA feature pack optional service data objects runtime after you have already installed the feature pack. To do so, use the **modify** function.

Section

Summary



This section provides a summary of what you have learned in this presentation.

Summary

- Use the IBM Installation Manager to install the WebSphere Application Server Feature Pack for SCA
- The feature pack runs on top of WebSphere Application Server V7
- To install the feature pack:
 - ▶ Install the Installation Manager and configure product repositories, if needed
 - ▶ Import WebSphere Application Server into the Installation Manager
 - ▶ Install the feature pack on top of WebSphere Application Server



The IBM Installation Manager is the tool that you use to install the WebSphere Application Server Feature Pack for SCA. The feature pack runs on top of WebSphere Application Server V7, at Fix Pack 7 or later. To install the feature pack, install the Installation Manager, import the application server, then install the feature pack on top of the application server.

Resources

- WebSphere Application Server V7 trial site:
http://www.ibm.com/developerworks/downloads/ws/was/?S_TACT=105AGX28&S_CMP=TRIALS
- IBM Update Installer V7.0.0.7 for WebSphere
<http://www-01.ibm.com/support/docview.wss?rs=180&uid=swg24020448>
- Installation manager information center
<http://publib.boulder.ibm.com/infocenter/install/v1r2/index.jsp>
- SCA feature pack information center
http://publib.boulder.ibm.com/infocenter/wasinfo/v7r0/topic/com.ibm.websphere.soafep.multiplatform.doc/info/welcome_nd.html
- IBM WebSphere Application Server V7 feature pack for service component architecture v 1.0
<http://www-01.ibm.com/software/webservers/appserv/was/featurepacks/sca/>
- WebSphere Application Server V7 supported hardware information
<http://www.ibm.com/support/docview.wss?rs=180&uid=swg27012284>
- WebSphere Application Server V7 installation information
http://publib.boulder.ibm.com/infocenter/ieduasst/v1r1m0/index.jsp?topic=/com.ibm.iea.was_v7/was/7.0/InstallationAndMigration.html



Here are some resources links for more information.

Feedback

Your feedback is valuable

You can help improve the quality of IBM Education Assistant content to better meet your needs by providing feedback.

- Did you find this module useful?
- Did it help you solve a problem or answer a question?
- Do you have suggestions for improvements?

Click to send e-mail feedback:

mailto:iea@us.ibm.com?subject=Feedback_about_WASv7SCA101_Install.ppt

This module is also available in PDF format at: ..\\WASv7SCA101_Install.pdf



You can help improve the quality of IBM Education Assistant content by providing feedback.

Trademarks, copyrights, and disclaimers

IBM, the IBM logo, ibm.com, and the following terms are trademarks or registered trademarks of International Business Machines Corporation in the United States, other countries, or both:

Express WebSphere z/OS

If these and other IBM trademarked terms are marked on their first occurrence in this information with a trademark symbol (® or ™), these symbols indicate U.S. registered or common law trademarks owned by IBM at the time this information was published. Such trademarks may also be registered or common law trademarks in other countries. A current list of other IBM trademarks is available on the Web at "Copyright and trademark information" at <http://www.ibm.com/legal/copytrade.shtml>

Internet Explorer, Windows, and the Windows logo are registered trademarks of Microsoft Corporation in the United States, other countries, or both.

JavaScript, and all Java-based trademarks and logos are trademarks of Sun Microsystems, Inc. in the United States, other countries, or both.

Linux is a registered trademark of Linus Torvalds in the United States, other countries, or both.

Other company, product, or service names may be trademarks or service marks of others.

Product data has been reviewed for accuracy as of the date of initial publication. Product data is subject to change without notice. This document could include technical inaccuracies or typographical errors. IBM may make improvements or changes in the products or programs described herein at any time without notice. Any statements regarding IBM's future direction and intent are subject to change or withdrawal without notice, and represent goals and objectives only. References in this document to IBM products, programs, or services does not imply that IBM intends to make such products, programs or services available in all countries in which IBM operates or does business. Any reference to an IBM Program Product in this document is not intended to state or imply that only that program product may be used. Any functionally equivalent program, that does not infringe IBM's intellectual property rights, may be used instead.

THE INFORMATION PROVIDED IN THIS DOCUMENT IS DISTRIBUTED "AS IS" WITHOUT ANY WARRANTY, EITHER EXPRESS OR IMPLIED. IBM EXPRESSLY DISCLAIMS ANY WARRANTIES OF MERCHANTABILITY, FITNESS FOR A PARTICULAR PURPOSE OR NONINFRINGEMENT. IBM shall have no responsibility to update this information. IBM products are warranted, if at all, according to the terms and conditions of the agreements (for example, IBM Customer Agreement, Statement of Limited Warranty, International Program License Agreement, etc.) under which they are provided. Information concerning non-IBM products was obtained from the suppliers of those products, their published announcements or other publicly available sources. IBM has not tested those products in connection with this publication and cannot confirm the accuracy of performance, compatibility or any other claims related to non-IBM products.

IBM makes no representations or warranties, express or implied, regarding non-IBM products and services.

The provision of the information contained herein is not intended to, and does not, grant any right or license under any IBM patents or copyrights. Inquiries regarding patent or copyright licenses should be made, in writing, to:

IBM Director of Licensing
IBM Corporation
North Castle Drive
Armonk, NY 10504-1785
U.S.A.

Performance is based on measurements and projections using standard IBM benchmarks in a controlled environment. All customer examples described are presented as illustrations of how those customers have used IBM products and the results they may have achieved. The actual throughput or performance that any user will experience will vary depending upon considerations such as the amount of multiprogramming in the user's job stream, the I/O configuration, the storage configuration, and the workload processed. Therefore, no assurance can be given that an individual user will achieve throughput or performance improvements equivalent to the ratios stated here.

© Copyright International Business Machines Corporation 2009. All rights reserved.

Note to U.S. Government Users - Documentation related to restricted rights-Use, duplication or disclosure is subject to restrictions set forth in GSA ADP Schedule Contract and IBM Corp.