



IBM Software Group

## **IBM WebSphere Application Server V7.0 Feature Pack for Service Component Architecture V1.0.1**

### ***Installation Manager overview***



@business on demand.

© 2009 IBM Corporation  
Updated November 9, 2009

This presentation provides an overview of IBM Installation Manager, the tool that is used to install the WebSphere® Application Server Feature Pack for Service Component Architecture.



## Section

# ***IBM Installation Manager overview***



This section provides an overview of IBM Installation Manager and the features it provides.

## IBM Installation Manager overview

- IBM Installation Manager is an application that makes it easy to download, install, update, and uninstall many IBM software products from a single user interface
  - ▶ The Installation Manager is used to install the WebSphere Application Server Feature Pack for Service Component Architecture
- Using Installation Manager, you can:
  - ▶ Download and install product packages from a Web repository
  - ▶ Select exactly which product packages to install so that you download only the features you need
    - Reduces product footprint and download time
  - ▶ Configure a local product repository if you need to install products on a system without internet access



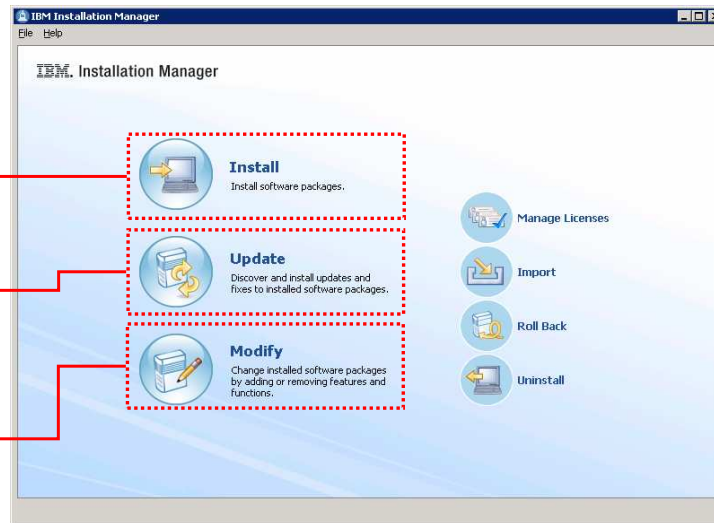
IBM Installation Manager is a common installer for many IBM software products that you can use to install this WebSphere Application Server feature pack. This feature pack is among the first WebSphere Application Server products to be installed using Installation Manager. Previously programs based on InstallShield MultiPlatform (ISMP) have been used to install, update, and uninstall previous versions of WebSphere Application Server. Installation Manager is a single installation program that can use remote or local software repositories to install, modify, or update new WebSphere Application Server products. It determines and shows available packages—including products, fix packs, ifixes, and so on—checks prerequisites and interdependencies, and installs the selected packages. You also use Installation Manager to easily uninstall the packages that it installed. Installation Manager supports installing products from a Web-based repository, or a local repository. This repository structure allows you to select which features you need to install so that you can reduce your product footprint. If using a Web repository, reduce your download time because you are only downloading the features you need. The download process for getting installation images and fixes for products that use ISMP-based technology require you to manually select the appropriate operating system and hardware architecture. Installation Manager simplifies this process by only allowing you to download and install packages that are suitable for your operating system and hardware.

## Installation Manager features

The **Install** wizard walks you through installing new products

The **Update** wizard discovers and installs updates and fixes

The **Modify** wizard can add or remove product features



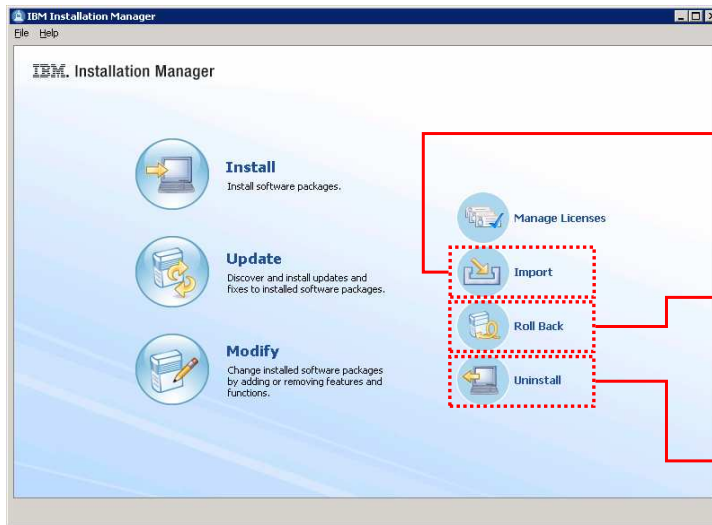
5

Installation Manager overview

© 2009 IBM Corporation

The Installation Manager includes several wizards that guide you through installing, updating, and uninstalling software products. The Install wizard is the starting place for installing new software packages. It will access the repositories you have configured, provide a list of packages available for installation, and step you through the installation process. The Update wizard discovers and installs updates and fixes to your software packages – this is the interface you use to apply software maintenance or update your products to a new version. This wizard displays and recommends fixes and maintenance packages that are targeted to your operating system and set of installed products. You can also apply refresh packs to update your software to the latest version. Installation Manager allows you to select from a set of product features that you want to install for some products. If you do not choose to install a feature while installing a product, you can use the Modify wizard to add that feature to the product later, or remove a feature that has already been installed. The new Feature Pack for SCA V1.0.1 supports an older version of SCA feature pack V1.0 and you can install V1.0.1 on top of V1.0. You do so by using the Modify wizard.

## Installation Manager features



The **Import** wizard associates the installation manager with external software packages

The **Roll Back** wizard removes service

The **Uninstall** wizard removes software packages from your computer



The Import wizard allows you to point to an existing product installation on your system and link it to Installation Manager. For example, before installing the Feature Pack for SCA, you need to import an installation of WebSphere Application Server V7 so that you can install the feature pack on top of the application server. The Import button is not present until you add a WebSphere repository to the Installation Manager. The Roll Back wizard allows you to move your product back to a previous version of service – for example, moving a product from Fix Pack Y to Fix Pack X. The Uninstall wizard allows you to remove software packages from your computer and remove links to products that you have imported. You use the Uninstall wizard to uninstall the Feature Pack for SCA and to remove the link between Installation Manager and WebSphere Application Server V7 – sometimes called unimporting the application server. **Note that Uninstall by itself does not unimport. It only achieves the effect of removing the link when the uninstallation is run under skipInstall mode.** The Manage Licenses wizard is not used by WebSphere products at this time. Also, the import and unimport operations are only available with WebSphere Application Server V7. Do not try to use Installation Manager to import or unimport other products, like Rational Application Developer.

## Section

# *Usage and benefits*

This section describes a sample usage scenario for and benefits of using Installation Manager.

## Example usage scenario

| Scenario: Installing a feature pack on top of WebSphere Application Server   |   |
|--|---|
| Earlier ISMP-based installation solution   | New IBM Installation Manager solution   |
| <ul style="list-style-type: none"> <li>▪ Locate and download the feature pack installation package</li> <li>▪ Install each WebSphere Application Server feature pack separately               <ul style="list-style-type: none"> <li>▶ During installation, you can select an existing installation or browse to a different existing installation</li> </ul> </li> </ul> <p><b>NOTE:</b> The required WebSphere Application Server fix pack is bundled with the feature pack even if the fix pack has already been applied to the existing installation</p> | <ul style="list-style-type: none"> <li>▪ Install the IBM Installation Manager</li> <li>▪ Start the IBM Installation Manager, and point to the WebSphere repository</li> <li>▪ Browse to and import the WebSphere Application Server installation into Installation Manager</li> <li>▪ Select and install the new feature packs</li> </ul> |

8

Installation Manager overview

© 2009 IBM Corporation

Earlier installation methods for installing feature packs for WebSphere Application Server used ISMP-based tools. To install these feature packs, you had to locate and download the feature pack installation package and install each feature pack separately. During installation, you can select an existing installation or browse to a particular existing installation location. For each feature pack, the required WebSphere Application Server fix pack is bundled with the feature pack, even if the fix pack has already been applied to the existing installation.

The feature pack for SCA uses the new IBM Installation Manager solution. Before installing the feature pack, you need to install IBM Installation Manager. The version of IBM Installation Manager made available with the feature pack is automatically configured to point to the Web repositories for WebSphere products. If you are using a local repository, you need to point to the local repository location. Then, browse to and import the WebSphere Application Server installation into Installation Manager and select and install the new feature packs. The required WebSphere Application Server fix packs are not packaged with the feature packs.



## Installation Manager benefits

- Single interface to install, update, uninstall many IBM software products
  - ▶ Replaces dedicated installers and uninstallers and maintenance tools
- Work with multiple packages at the same time
- Reduce product download footprint
  - ▶ Choose which features to install; Installation Manager only downloads the content you need
  - ▶ Required fixes are not bundled with products but downloaded separately
- Simplifies product maintenance
  - ▶ Identifies recommended fixes and can automatically download them
  - ▶ Only lets you download fixes for your platform

9

Installation Manager overview

© 2009 IBM Corporation

IBM Installation Manager offers several benefits over earlier installation technologies. The single interface is used to install, update, and uninstall many IBM software products; for example, WebSphere Application Server Feature Pack for Service Component Architecture and Rational Application Developer. Installation Manager replaces dedicated installers and uninstallers and other maintenance tools. Installation Manager allows you to work with multiple packages at the same time. You can install multiple feature packs and related fixes all in one pass through your interface; you can also uninstall multiple packages simultaneously. Installation Manager helps you reduce your product download footprint. You choose the features you want to install, and Installation Manager downloads only the content you need. Required fixes are not bundled with products but are downloaded separately. Installation Manager also simplifies product maintenance. It identifies recommended fixes for you and can automatically download and apply them. It only lets you download fixes for your platform.

## Section

# *Summary*



This section gives a summary of this presentation.

## Summary

- Use the IBM Installation Manager to install, update, and uninstall the WebSphere Application Server Feature Pack for Service Component Architecture
- Single interface that streamlines product operations, reduces download footprint, and simplifies maintenance



IBM Installation Manager is the tool you use to install, update, and uninstall the WebSphere Application Server Feature Pack for Service Component Architecture. Installation Manager is a single interface that helps you streamline product operations by enabling you to work with multiple product packages at once. By using Web repositories and allowing you to select only the product features you need, Installation Manager can help to reduce product footprint. The Installation Manager also simplifies maintenance by identifying recommended maintenance for your installed products, targeted to your operating system.



## Trademarks, copyrights, and disclaimers

IBM, the IBM logo, ibm.com, and the following terms are trademarks or registered trademarks of International Business Machines Corporation in the United States, other countries, or both:

Rational      WebSphere

If these and other IBM trademarked terms are marked on their first occurrence in this information with a trademark symbol (® or ™), these symbols indicate U.S. registered or common law trademarks owned by IBM at the time this information was published. Such trademarks may also be registered or common law trademarks in other countries. A current list of other IBM trademarks is available on the Web at "Copyright and trademark information" at <http://www.ibm.com/legal/copytrade.shtml>

Other company, product, or service names may be trademarks or service marks of others.

Product data has been reviewed for accuracy as of the date of initial publication. Product data is subject to change without notice. This document could include technical inaccuracies or typographical errors. IBM may make improvements or changes in the products or programs described herein at any time without notice. Any statements regarding IBM's future direction and intent are subject to change or withdrawal without notice, and represent goals and objectives only. References in this document to IBM products, programs, or services does not imply that IBM intends to make such products, programs or services available in all countries in which IBM operates or does business. Any reference to an IBM Program Product in this document is not intended to state or imply that only that program product may be used. Any functionally equivalent program, that does not infringe IBM's intellectual property rights, may be used instead.

THE INFORMATION PROVIDED IN THIS DOCUMENT IS DISTRIBUTED "AS IS" WITHOUT ANY WARRANTY, EITHER EXPRESS OR IMPLIED. IBM EXPRESSLY DISCLAIMS ANY WARRANTIES OF MERCHANTABILITY, FITNESS FOR A PARTICULAR PURPOSE OR NON-INFRINGEMENT. IBM shall have no responsibility to update this information. IBM products are warranted, if at all, according to the terms and conditions of the agreements (for example, IBM Customer Agreement, Statement of Limited Warranty, International Program License Agreement, etc.) under which they are provided. Information concerning non-IBM products was obtained from the suppliers of those products, their published announcements or other publicly available sources. IBM has not tested those products in connection with this publication and cannot confirm the accuracy of performance, compatibility or any other claims related to non-IBM products.

IBM makes no representations or warranties, express or implied, regarding non-IBM products and services.

The provision of the information contained herein is not intended to, and does not, grant any right or license under any IBM patents or copyrights. Inquiries regarding patent or copyright licenses should be made, in writing, to:

IBM Director of Licensing  
IBM Corporation  
North Castle Drive  
Armonk, NY 10504-1785  
U.S.A.

Performance is based on measurements and projections using standard IBM benchmarks in a controlled environment. All customer examples described are presented as illustrations of how those customers have used IBM products and the results they may have achieved. The actual throughput or performance that any user will experience will vary depending upon considerations such as the amount of multiprogramming in the user's job stream, the I/O configuration, the storage configuration, and the workload processed. Therefore, no assurance can be given that an individual user will achieve throughput or performance improvements equivalent to the ratios stated here.

© Copyright International Business Machines Corporation 2009. All rights reserved.

Note to U.S. Government Users - Documentation related to restricted rights-Use, duplication or disclosure is subject to restrictions set forth in GSA ADP Schedule Contract and IBM Corp.