



IBM Software Group

IBM WebSphere Application Server V6.1

IBM Web Administration for i5/OS



@business on demand.

© 2005 IBM Corporation
Converted to video May 14, 2015

This presentation will focus on support for IBM WebSphere® Application Server V6.1 provided by the IBM Web Administration for i5/OS® interface.

Agenda

- Overview of the IBM Web Administration for i5/OS interface
- Creating WebSphere Application Server profiles
- Managing application servers
- Limitations



First, an introduction to the IBM Web Administration for i5/OS interface which, among other things, allows you to create and manage WebSphere application servers will be provided. You will learn how to create and manage an application server profile using the administration wizards. The limitations in the support provided by the Web Administration interface will also be discussed.

Section

IBM Web Administration for i5/OS



This section provides an overview of the IBM Web Administration for i5/OS interface.

IBM Web Administration for i5/OS

■ What is it

- ▶ Simplified graphical user interface to setup and manage different servers and server types on i5/OS.
 - WebSphere Application Server
 - WebSphere Portal Server
 - IBM HTTP Server
 - Lotus® Domino® Web Server
 - And more
- ▶ Use forms, tools and wizards to simplify tasks
- ▶ Runs in IBM HTTP Server for i5/OS Administration instance
 - STRTCPSVR SERVER(*HTTP) HTTPSVR(*ADMIN)
 - <http://yourhost:2001>



4

The IBM Web Administration for i5/OS interface combines forms, tools, and wizards to create a simplified environment enabling you to set up and manage many different servers and server types on your iSeries®™ server.

One of the key differences between IBM HTTP Server for i5/OS™ and other Web server products is the graphical user interface provided for setting up and managing your servers. The IBM Web Administration for i5/OS interface is rich in function, examples, error-checking, and ease-of-use. Administration is made significantly easier through the use of forms, wizards, tasks and tools.

The IBM Web Administration for i5/OS interface requires a Web browser that supports the HTTP 1.0 or 1.1 protocol, frames, and JavaScript™. Suggested Web browsers include Microsoft® Internet Explorer V5.0 or higher and Firefox V1.0 or higher.

The IBM Web Administration interface contains support to create and manage WebSphere Application Server standalone application server profiles. Additionally, you can use the Web Administration interface to associate your existing IBM HTTP Server or Lotus Domino Web Server instances with existing WebSphere application servers that were created during installation or by using the manageprofiles Qshell script.

The Web Administration interface also includes support for the Digital Certificate Manager for i5/OS. Using the digital certificate manager to manage keystores used with WebSphere Application Server is discussed in a different presentation.

Starting the Web Administration interface

- Ensure 5722-DG1 and latest group PTF installed
 - ▶ GO LICPGM, option 10 to display installed products
 - ▶ WRKPTFGRP
 - V5R3M0: SF99099
 - V5R4M0: SF99114
- Ensure the *ADMIN instance is started
 - ▶ STRTCPSVR SERVER(*HTTP) HTTPSVR(*ADMIN)
- Point browser to: <http://iseriesHost:2001>
- Enter your userid and password when prompted
- Click the IBM Web Administration for i5/OS (or iSeries) link



Before you can start the IBM Web Administration interface, you must first ensure you have the IBM HTTP Server product, 5722-DG1, and the latest group PTF installed. You can use the Licensed Program menu, option 10, to display the installed products on your system to verify that 5722-DG1 is installed. Use the **Work With PTF Groups** CL command to verify that the group PTF is installed. For V5R3, level 10 or higher should be installed, for V5R4, level 4 or higher should be installed.

Next, start the administration instance for IBM HTTP Server using the **Start TCP Server** CL command.

To access the Web Administration interface, point your web browser to **http://yourIsSeriesHostName:2001**. You will be prompted for your i5/OS userid and password.

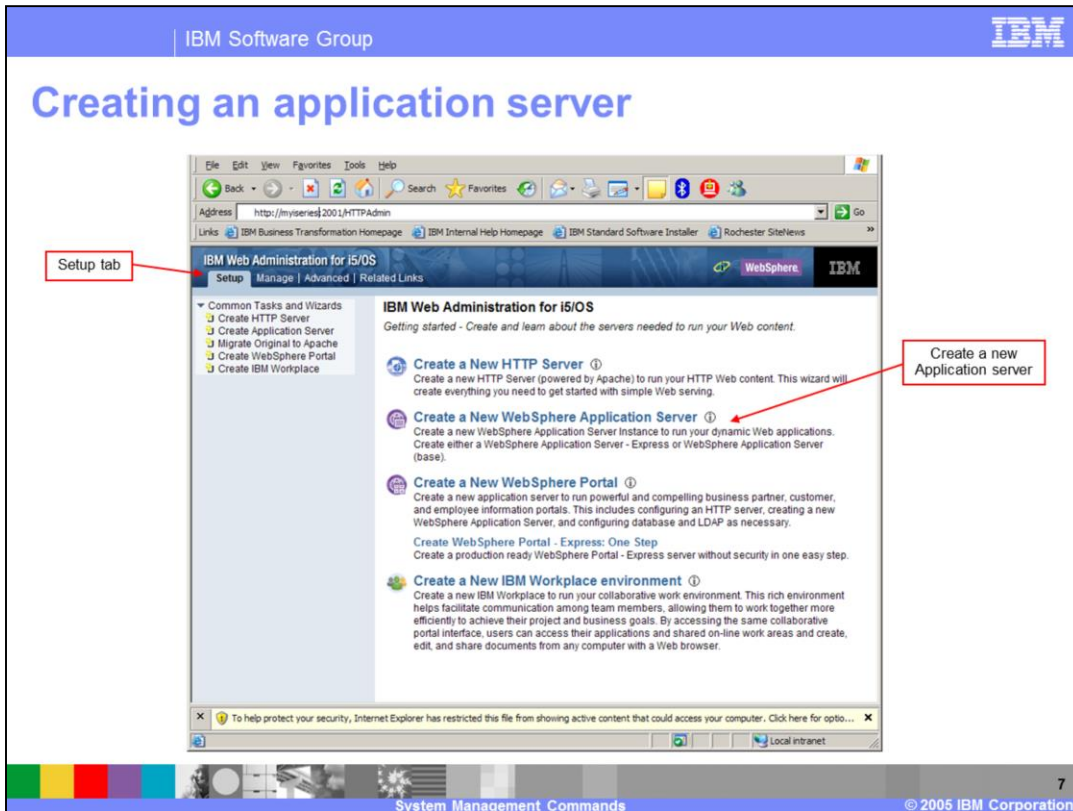
The i5/OS Tasks page will be displayed. Depending on whether your system is at V5R3 or V5R4, you might see the term “iSeries” used instead of “i5/OS”. Click the IBM Web Administration for i5/OS (or iSeries) link to connect to the IBM Web Administration pages.

Section

Create application servers



This section will cover creating a Version 6.1 WebSphere Application Server standalone application server profile using the IBM Web Administration for i5/OS interface.



From the Setup tab of the IBM Web Administration for i5/OS interface, you can choose to create one of several different server types. Clicking the “Create a New WebSphere Application Server” link will display a wizard that walks you step-by-step through the process of creating an application server.

The wizard is very simple to use and detects the supported, installed WebSphere Application Server products and allows you to choose which product to create the application server under.

You can choose to create an IBM HTTP Server instance to use with your new application server or you can choose to associate an existing IBM HTTP Server or Lotus Domino Web server instance with your application server. If you do not plan to use an i5/OS Web Server with the application server, you can choose “None” when prompted.

The wizard prompts you for a name for the application server and the first port number in a block of ports to use for assigning ports for the application server to use. The name you specify is used for both the WebSphere Application Server profile name and the name of the application server the profile will contain.

You can choose to install the Sample applications in the new application server as it is created if the Samples feature was installed when you installed the product. By default the Samples applications are not installed.

Once you make your selections, the wizard displays a printable summary page of your choices.

Creating an application server continued

The screenshot shows the IBM Web Administration GUI for i5/OS. The browser address bar shows `http://myseries:2001/HTTPAdmin`. The page title is "IBM Web Administration for i5/OS". The navigation bar includes "Setup", "Manage", "Advanced", and "Related Links". The main content area is titled "Manage WebSphere Application Server - V6.1.0.2 Base". It shows the profile "WAS61SVR" and the product install path. A status message indicates that the server "WAS61SVR/WAS61SVR" is in the process of being created. Below the message, there are three sections: "Create Additional Virtual Host", "Install New Application", and "Create Data Source".

When you click “Finish” on the Summary page, the view switches to the “Manage” tab. A revolving icon is displayed next to the Status message, indicating that the application server is in the process of being created. It could take several minutes or even tens of minutes to create the application server depending on your system resources and activity level.

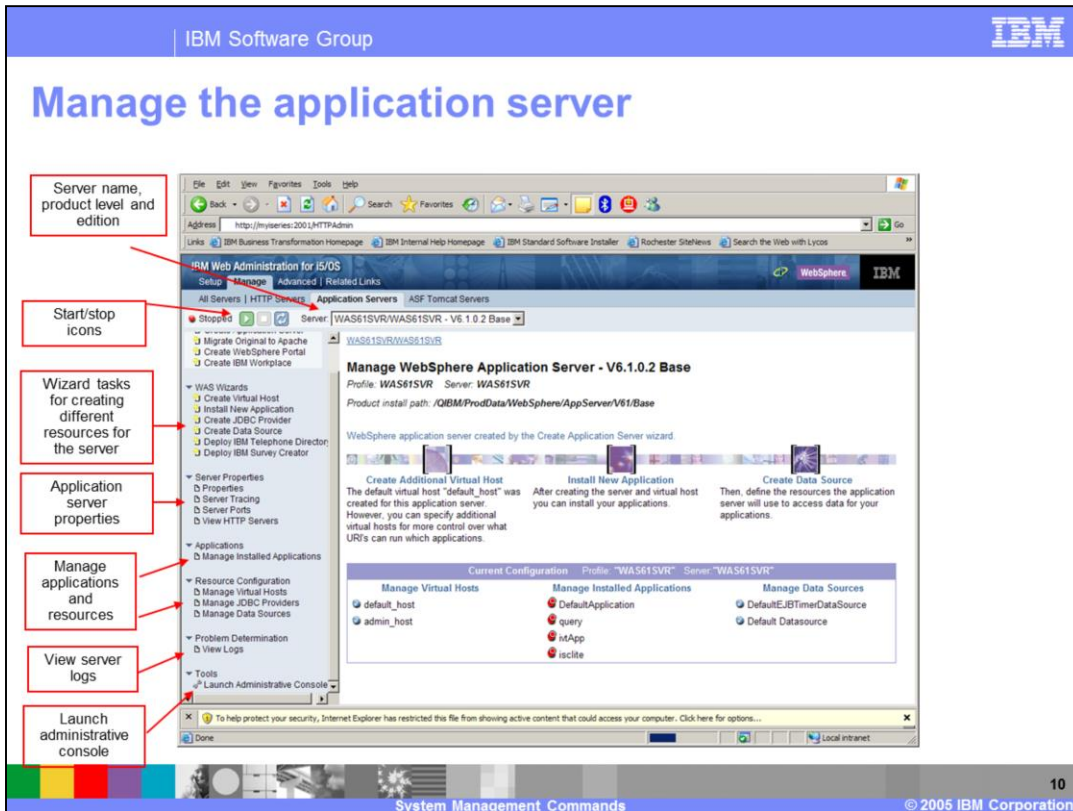
Once the application server is created, you are ready to manage it.

Section

Manage application servers



This section will cover the management capabilities for WebSphere Application Server provided by the IBM Web Administration interface.



The “Manage WebSphere Application Server” page displays useful information about your application server. The left-hand navigation frame contains icons to start and stop your application server, and links for wizards and tasks you can use to manage the application server.

The WAS Wizards section of the navigation frame on the “Manage Application Server” page allows you to create new resources for your application server such as virtual hosts, JDBC™ providers, and data sources. There is also a wizard to walk you through installing a new application.

The Server Properties section allows you to view important application server properties such as profile location, port numbers, and associated HTTP server instances. Additionally, you can enable tracing of the application server using the Server Tracing link.

The “Manage” tasks allow you to manage your installed applications and resources such as virtual hosts, JDBC providers and data sources.

The create and manage wizards provide a simple and easy method for creating and managing applications, and certain resources for your application server. The wizards do not provide the same depth and breadth of function that the WebSphere administrative console provides. For situations where you require more advanced function, use the “Launch Administrative Console” link to start the WebSphere administrative console.

Clicking the “View logs” link displays a list of the logs associated with the application server and you can view any of the logs listed.

Section

Limitations



This section will cover the limitations that exist within the IBM Web Administration interface when creating and managing WebSphere Application Server profiles.

Limitations

- Cannot create an application server with WebSphere administrative security enabled
 - ▶ Use WebSphere administrative console afterwards to enable administrative security
- Cannot manage resources or install/update/uninstall applications if administrative security is enabled for the application server
 - ▶ IBM Web Administration limited to:
 - Associate HTTP server instances
 - Start/stop server
 - View server properties
 - View logs
- Deployment manager servers are not supported
- Federated nodes (belong to Network Deployment cell) are not supported



The IBM Web Administration for i5/OS has certain limitations when managing WebSphere application servers. For instance, you cannot specify that you want administrative security enabled when you create an application server. If you choose to enable administrative security later, using the WebSphere administrative console, the IBM Web Administrative interface does not allow you to create or manage resources or applications for the secured application server. You are limited to starting and stopping the application server, viewing the logs and viewing certain server properties. You can also continue to launch the WebSphere administrative console from the Manage WebSphere Application Server page.

The Web Administration interface does not support management of Network Deployment deployment managers or application servers in profiles belonging to a Network Deployment cell.

Summary

- IBM HTTP Server for i5/OS provides a rich graphical user interface for managing different server and server type on your iSeries server
- The IBM Web Administration for i5/OS interface allows you to:
 - ▶ Create WebSphere Application Server standalone application server profiles
 - ▶ Associate HTTP server instances with an application server
 - ▶ Manage the application server
 - Start and stop the application server
 - Create JDBC providers and datasources
 - Install, update and remove applications
 - Manage your virtual hosts
 - View logs



In summary, this presentation provided an overview of the IBM Web Administration for i5/OS interface and how you can use it to create and manage WebSphere Application Server standalone application server profiles. You can use the IBM Web Administration for i5/OS to perform tasks such as:

- create a standalone application server profile
- associate HTTP server instances with application servers
- start and stop application servers
- create JDBC providers and data sources
- install, update and uninstall applications
- manage virtual hosts
- view the application server log files

Reference

- IBM HTTP Server for i5/OS
 - ▶ <http://publib.boulder.ibm.com/infocenter/series/v5r4/topic/rzaie/rzaiemain.htm>
- IBM Web Administration for i5/OS
 - ▶ <http://publib.boulder.ibm.com/infocenter/series/v5r4/topic/rzaie/rzaieconadmin.htm>

Listed here are some additional references where you can get more information on the IBM Web Administration for i5/OS and WebSphere Application Server.

Trademarks, copyrights, and disclaimers

The following terms are trademarks or registered trademarks of International Business Machines Corporation in the United States, other countries, or both:

IBM	CICS	IMS	MQSeries	Tivoli
IBM (logo)	Cloudscape	Informix	OS/390	WebSphere
eIogo/business	DB2	iSeries	OS/400	xSeries
AIX	DB2 Universal Database	Lotus	pSeries	zSeries

Java and all Java-based trademarks are trademarks of Sun Microsystems, Inc. in the United States, other countries, or both.

Microsoft, Windows, Windows NT, and the Windows logo are registered trademarks of Microsoft Corporation in the United States, other countries, or both.

Intel, ActionMedia, LANDesk, MMX, Pentium and ProShare are trademarks of Intel Corporation in the United States, other countries, or both.

UNIX is a registered trademark of The Open Group in the United States and other countries.

Linux is a registered trademark of Linus Torvalds.

Other company, product and service names may be trademarks or service marks of others.

Product data has been reviewed for accuracy as of the date of initial publication. Product data is subject to change without notice. This document could include technical inaccuracies or typographical errors. IBM may make improvements and/or changes in the product(s) and/or program(s) described herein at any time without notice. Any statements regarding IBM's future direction and intent are subject to change or withdrawal without notice, and represent goals and objectives only. References in this document to IBM products, programs, or services does not imply that IBM intends to make such products, programs or services available in all countries in which IBM operates or does business. Any reference to an IBM Program Product in this document is not intended to state or imply that only that program product may be used. Any functionally equivalent program, that does not infringe IBM's intellectual property rights, may be used instead.

Information is provided "AS IS" without warranty of any kind. THE INFORMATION PROVIDED IN THIS DOCUMENT IS DISTRIBUTED "AS IS" WITHOUT ANY WARRANTY, EITHER EXPRESS OR IMPLIED. IBM EXPRESSLY DISCLAIMS ANY WARRANTIES OF MERCHANTABILITY, FITNESS FOR A PARTICULAR PURPOSE OR NONINFRINGEMENT. IBM shall have no responsibility to update this information. IBM products are warranted, if at all, according to the terms and conditions of the agreements (e.g. IBM Customer Agreement, Statement of Limited Warranty, International Program License Agreement, etc.) under which they are provided. Information concerning non-IBM products was obtained from the suppliers of those products, their published announcements or other publicly available sources. IBM has not tested those products in connection with this publication and cannot confirm the accuracy of performance, compatibility or any other claims related to non-IBM products. IBM makes no representations or warranties, express or implied, regarding non-IBM products and services.

The provision of the information contained herein is not intended to, and does not, grant any right or license under any IBM patents or copyrights. Inquiries regarding patent or copyright licenses should be made, in writing, to:

IBM Director of Licensing
IBM Corporation
North Castle Drive
Armonk, NY 10504-1785
U.S.A.

Performance is based on measurements and projections using standard IBM benchmarks in a controlled environment. All customer examples described are presented as illustrations of how those customers have used IBM products and the results they may have achieved. The actual throughput or performance that any user will experience will vary depending upon considerations such as the amount of multiprogramming in the user's job stream, the I/O configuration, the storage configuration, and the workload processed. Therefore, no assurance can be given that an individual user will achieve throughput or performance improvements equivalent to the ratios stated here.

© Copyright International Business Machines Corporation 2004. All rights reserved.

Note to U.S. Government Users - Documentation related to restricted rights-Use, duplication or disclosure is subject to restrictions set forth in GSA ADP Schedule Contract and IBM Corp.