



IBM Software Group

IBM WebSphere Application Server V6.1

Administrative Console Enhancements



@business on demand.

© 2006 IBM Corporation
Converted to video May 14, 2015

This presentation will focus on Administrative Console enhancements introduced in WebSphere® Application Server V6.1.

Agenda

- Overview of enhancements in V6.1 Administrative Console
- Use of Integrated Solutions Console in V6.1
- Command Assistance in console
- Enhanced application install and configuration management
- Enhanced Resource Management
- Enhanced Cluster and Cluster Member Management
- Enhanced Shared Library Management



Several areas related to the Administrative Console will be discussed beginning with an overview of the enhancements that were made. Individual sections will provide more details. There will be sections to describe the use of the Integrated Solutions Console framework and command assistance. Additional sections will discuss enhancements to application install and configuration, resource management, cluster management, and shared library management.

Additional information for all these topics may be found the WebSphere Application Server V6.1 Information Center.

Simplified Administration in Console - Overview

- V6.1 uses Integrated Solutions Console (ISC) as its Administrative Console
 - ▶ ISC provides custom navigation for common tasks, and extensibility for clients and ISVs to extend the console
 - ▶ ISC is becoming the standard console for IBM Software products
- Focus of the enhancements are ease of use and consumability while maintaining the look and user interaction of previous versions of the console
- Console simplification in certain areas, based on client and internal feedback:
 - ▶ Application install and management
 - ▶ Resource management simplification
 - ▶ Configuring database connections
 - ▶ Configuring clusters and cluster members
 - ▶ Configuring shared libraries
- New command assistance function provides mechanism to view wsadmin scripting commands for the last action run in the console



This presentation discusses some of the enhancements to WebSphere Application Server V6.1 Administrative Console. These enhancements resulted from feedback from WebSphere customers or the WebSphere service team.

Some of the main areas of administrative console complexity have been addressed in this release by reducing the number of required steps and improving the flow of specific task. You will also notice that some of the navigation panels have been refactored to simplify the task of the administrator.

Section

Integrated Solutions Console (ISC)



This section describes the Integrated Solutions Console, which is used to build the V6.1 Administrative Console.

Additional information on the topics in this section may be found the WebSphere Application Server V6.1 Information Center.

Integrated Solutions Console

- Administrative Console is based on the Integrated Solutions Console (ISC) framework which provides consistency and integration capability for administering IBM software
- Allows ability to create navigation list of customized tasks more frequently performed by the administrator
- Allows clients and ISVs to extend the console by creating ISC portlets and adding to the console infrastructure

Out of the box default view of the Administrative Console

Suite Name	Version
Integrated Solutions Console	6.1
WebSphere Application Server	6.1.0.0

Administrative Console Enhancements © 2006 IBM Corporation

The Administrative Console is based on the Integrated Solutions Console (ISC) framework. This framework allows consistency and integration capabilities with the graphical administration of other IBM software products. The Administrative Console page content remains familiar to what you are used to seeing for WebSphere Application Server. This slide shows the default view that you would see just after installing WebSphere Application Server V6.1.

IBM Software Group IBM

Customizing Navigation - My Tasks

Integrated Solutions Console

View: WebSphere Application Server

- Welcome
- My tasks
- WebSphere Application Server

Integrated Solutions Console

View: My tasks

[Edit 'My tasks'](#)

- Enterprise Applications
- Install New Application
- Secure administration, applications, and infrastructure
- Secure communications
- Bus Security
- Administrative User Roles
- Administrative Group Roles
- Manage Users
- Manage Groups

My Task

Select the tasks you wish to add to the 'My tasks' list.

Select All Deselect All Expand All Collapse All

- Welcome
- Guided Activities
- Servers
- Applications
- Resources
- Security
- Environment
- System administration
- Users and Groups
- Monitoring and Tuning
- Troubleshooting
- Service integration
- UDDI

Apply Reset

Output

Only tasks for selected options are displayed

Enable tasks often performed in the console – can be broader category or more fine-grained

Administrative Console Enhancements © 2006 IBM Corporation

This slide shows how you can customize the console view for your preferences. Once "My Tasks" has been configured, the My Task view becomes the new default view when the console is started each time.

Section

wsadmin Command Assistance in Console



This section describes the new command assistance capability in the Administrative Console.

Additional information on the topics in this section may be found the WebSphere Application Server V6.1 Information Center.

wsadmin Command Assistance in Console

- Command assist feature in the Administrative Console displays the corresponding wsadmin commands for the last action run in the console
- Pop-up window shows the wsadmin scripting command in Jython language
- Preferences include logging the scripts and sending JMX notifications
 - ▶ Notifications can be sent to the new Jython editor in the Application Server Toolkit for easy integration into scripts
- In this release, not all console actions are supported by command assistance



The “wsadmin” Command Assist feature of the Administrative Console can be used to display the wsadmin commands that correspond to an Administrative Console operation. If Command Assist is enabled, the wsadmin commands will be displayed in a pop-up window.

There are some console actions that are not supported by command assistance, in V6.1 release. The coverage will increase with subsequent releases. V6.1 Information Center contains the list of console actions with no command assistance support.

User Interface of Command Assist

The screenshot displays the IBM Administrative Console interface. On the left, a table lists application-scoped resources. On the right, a pop-up window titled 'Administrative Scripting Commands' shows the command used to generate the resource list. A 'Help' window is overlaid on the right, providing field, page, and command assistance.

Enterprise Applications
Enterprise Applications > WebSphereBank > Application scoped resources
 Use this page to view the resources that are defined by the enhanced EAR within this application.
 Preferences

Name	JNDI name	Resource type
DefaultEJBTimerDataSource	jdbc/DefaultEJBTimerDataSource	DataSource
MyBank_DS	jdbc/MyBank	DataSource
MyBank_DS_CF	eis/jdbc/MyBank_CMP	J2CConnectionFactory
Total 3		

Help

Field help
 For field help information, select a field label or list marker when the help cursor appears.

Page help
[More information about this page](#)

Command Assistance
[View administrative scripting command for last action](#)

Administrative Scripting Commands
 The wsadmin scripting commands that map to actions on the administrative console display in the Jython language.
 Preferences
 Administrative Scripting Command
`AdminConfig.list('ApplicationScopeResource', AdminConfig.getid('/Cell:rhgCell02/Application:WebSphereBank.ear/Deployment:WebSphereBank/'))`
 Total 1

Pop-up window is refreshed with latest command script

Administrative Console Enhancements © 2006 IBM Corporation 9

This slide shows the Administrative Console display of the “Application scoped resources” of an application. On the right side of the screen, you will see the wsadmin commands that produced the list of resources.

Command Assistance preferences and pop-up

The screenshot shows a 'Pop-up window' titled 'Administrative Scripting Commands'. The window contains the following elements:

- Administrative Scripting Commands**: A section header followed by a description: 'The wsadmin scripting commands that map to actions on the administrative console display in the Jython language.'
- Preferences**: A section with several options:
 - Maximum rows**: A text input field containing '20'. A callout points to this field with the text 'Option to retain filter specified below'.
 - Retain filter criteria**: A checkbox that is currently unchecked. A callout points to it with the text 'Option to retain filter specified below'.
 - Enable command assistance notifications**: A checkbox that is currently unchecked. A callout points to it with the text 'Sends JMX notifications containing command assistance data'.
 - Log command assistance commands**: A checkbox that is currently unchecked. A callout points to it with the text 'Logs the script commands in a log file in server logs directory'.
- Buttons**: 'Apply' and 'Reset' buttons are located at the bottom of the preferences section.
- Specify Filter**: A callout points to a small icon (a plus sign in a square) located to the left of the command list.
- Administrative Scripting Command**: A list of commands. One command is highlighted:


```
AdminConfig.list('ApplicationScopeResource', AdminConfig.getid
('/Cell:rhgCell02/Application:WebSphereBank.ear/Deployment:WebSphereBank/'))
```

 A callout points to this command with the text 'Command scripts shown here'.
- Total**: A label indicating 'Total 1' command is shown.

The bottom of the slide features a decorative bar with the text 'Administrative Console Enhancements' and '© 2006 IBM Corporation'.

The command assistance window lists wsadmin commands that correspond to the most recent console user action. If the browser used is javascript enabled this window will be automatically refreshed with the new scripts with the next action in the administrative console.

In V6.1, not all the console actions are instrumented to provide the command assistance capability.

JMX Notification and Logging

- JMX notification
 - ▶ Notification allows JMX clients to receive notifications from command assistance scripts
 - ▶ The notification type for the command script is `websphere.command.assistance.jython.user_name`, where `user_name` is the name of the console user
 - ▶ A key new feature in the Application Server Toolkit is the integration of command assistance from the console, for easy integration into scripts
 - Preferences need to be set in the Application Server Toolkit and Administrative console to integrate the JMX notification
- Logging of command scripts
 - ▶ Log file name for command assistance commands is `${LOG_ROOT}/server/commandAssistanceJythonCommands_user name.log`
 - where “{LOG_ROOT}” is the server profile log directory, and “server” is the Application Server name
 - ▶ All console users will have their own log files



JMX clients can receive notifications when command assistance script is generated and can then access the contents of the script. Additionally, commands written to the command assistance window can be logged to a file for subsequent reference.

The resulting log file can be used as the starting point to build custom scripts. It is not a best practice to copy a series of commands out of the log into a script and expect them to behave immediately, without massaging. The command assistance is not meant to be a macro generating facility at this point. In V6.1 release, many console actions are not captured.

Section

Application installation and configuration features



This section describes some of the enhancements made to the application installation and configuration management functions of the Administrative Console.

Additional information on the topics in this section may be found the WebSphere Application Server V6.1 Information Center.

Application Install Enhancements

- Enterprise Application fast path install
 - ▶ Only wizard panels for the required steps are shown during application install – this reduces the number of steps for the administrator
- New wizard panels to enter additional application options during application install or post-install configuration
 - ▶ Web module: Context root
 - ▶ Web module: Servlet init parameters
 - ▶ Ability to specify referenced shared libraries during application install



To make installation of applications easier, a new “Enterprise Application fast path install” has been added. If this is chosen, then only those wizard panels that are required are displayed; if default values can be used or panel is not needed, it will not be shown. This reduces the number of steps that are needed for many common installation scenarios.

IBM Software Group

Fast path application deployment

Path to the new application

Local file system

Specify path
C:\WebSphereBank.ear

Remote file system

Specify path

Context root

Used only for standalone Web modules (.war files) and SIP modules (.sar files)

How do you want to install the application?

Prompt me only when additional information is required.

Show me all installation options and parameters.

Specify options for installing enterprise applications and modules.

Step 1: Select installation options

Step 2: Map modules to servers

Step 3: Summary

Select installation options

Specify the various options that are available for this application.

Precompile JavaServer Pages for this application

Directory to install application

Distribute application

Application Configuration

Enterprise beans

Application name

Specify options for installing enterprise application

Step 1: Select installation options

Step 2: Map modules to servers

Step 3: Provide options to perform the EJB Deploy

Step 4: Provide JSP reloading options for Web modules

Step 5: Map shared libraries

Step 6: Provide JNDI names for beans

Step 7: Map EJB references to beans

Step 8: Map default data sources for modules containing 2.x entity beans

Step 9: Map data sources for all 2.x CMP beans

Step 10: Map virtual hosts for Web modules

Step 11: Map context roots for Web modules

Step 12: Map security roles to users or groups

Select installation options

Specify the various options for this application

Precompile JavaServer Pages for this application

Directory to install application

Distribute application

Application Configuration

Enterprise beans

Application name

File Permission

Application Build

Allow dispatch

Allow service

14

Administrative Console Enhancements

© 2006 IBM Corporation

The fast path application deployment presents the administrator with a minimal number of panels to deploy an application. This slide shows what you might see if you choose to take the “fast path” to deploy an application. The application install wizards will display only the required steps, reducing the number of choices that the administrator must make.. If all the required information is already in the deployment descriptors, the wizard will go directly to the Summary page. This is extremely useful for the case of repeated installs where deployment descriptors are fully specified.

Application Management Enhancements

- Listing of all the applications for a given server from the Application Server configuration panel
- Improved organization of application configuration details
 - ▶ Configuration links are organized by the application content – Web module configuration, EJB™ configuration, Web Services, and so on
 - ▶ Only applicable application configuration will be exposed for a given application
 - ▶ Example: An application that has no Web Services component will not have the Web Service configuration option exposed in the configuration panel of that application
- Improved linkage between applications and resources
 - ▶ For a given application, the console exposes the shared libraries and resources being used by that application



This slide describes some of the other enhancements made to support application management in WebSphere Application Server V6.1. There is a new console action, available from the Application Server configuration panel, that will list all the application installed on a given server. The organization of application configuration details has been reworked so that only applicable configuration info is shown. The linkage between applications and their associated resources has been improved. For example, the administrative console now exposes the shared libraries used by an application.

Application list from Server configuration panel

Application servers

[Application servers](#) > **server1**

Use this page to configure an application server. An application server is a server that hosts enterprise applications.

Runtime | **Configuration**

General Properties

Name:

Run in development mode

Parallel start

Access to internal server classes:

Server-specific Application Settings

ClassLoader policy:

Class loading mode:

Container Settings

- SIP Container Settings
- Web Container Settings
- Portlet Container Settings
- EJB Container Settings
- Container Services
- Business Process Services

Applications

- Installed applications

Server messaging

Application servers

[Application servers](#) > **server1** > **Installed applications**

Use this page to manage installed applications. A single application can be installed on multiple servers.

Preferences

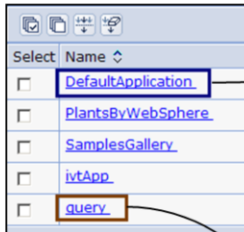
Select	Name	Application
<input type="checkbox"/>	DefaultApplication	<input checked="" type="checkbox"/>
<input type="checkbox"/>	PlantsByWebSphere	<input checked="" type="checkbox"/>
<input type="checkbox"/>	SamplesGallery	<input checked="" type="checkbox"/>
<input type="checkbox"/>	lvtApp	<input checked="" type="checkbox"/>
<input type="checkbox"/>	query	<input checked="" type="checkbox"/>

Administrative Console Enhancements © 2006 IBM Corporation 16

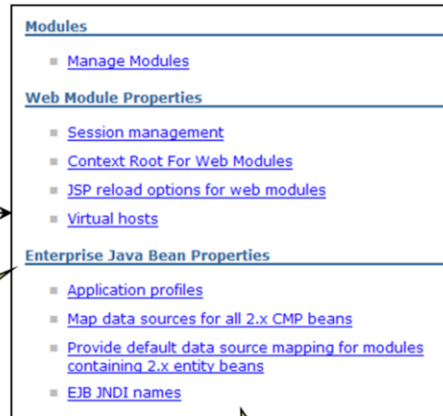
This slide shows how the administrative console lists the installed applications associated with an application server, one of the enhancements made to the administrative console. Note how easy it is to see the scope of the various components.

Application Configuration Details

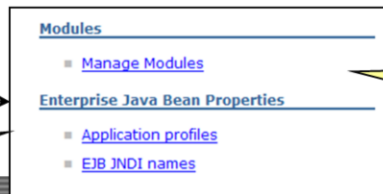
- Only properties and references applicable to the application are displayed



Example: No Web Services properties displayed



Example: No web module properties displayed



Parts of application configuration panel



This slide shows how post-install application management is simplified by reducing the complexity of the application details panel. In previous releases the application detail panel would display standard links, irrespective of the Enterprise Application content. Now the links are dynamically allocated and only those options that are applicable to the application are displayed in the detail panel, reducing the number of choices you must consider.

Section

Resource management features



This section describes the enhancements made in the area of resource management in the Administrative Console.

Additional information on the topics in this section may be found the WebSphere Application Server V6.1 Information Center.

Resource management enhancements

- V6.1 Administrative Console has been enhanced to make it easier to create and manage resources
- The areas of usability enhancements are:
 - ▶ Improved scope-selection process for resources
 - ▶ Resource management navigation panel re-factoring – frequently used resource factories are brought out on the left navigation panel of the console
 - ▶ New wizard to help create a data source



Enhancements made to the administrative console make the creation and management of resources easier for the administrator. The main enhancements include improvements in the scope-selection process for resources, panel refactoring, and a new wizard to help you create a data source. More details on these topics will be shown in the next few slides.

Resource collection under scope dropdown

JDBC providers

Use this page to edit properties of a JDBC provider. The JDBC provider object encapsulates the specific JDBC driver implementation class for access to the specific vendor database of your environment.

All Scopes

Scope specifies the level at which the resource definition is visible. For detailed information on what scope is and how it works, [see the scope settings help](#).

Scope: **All Scopes**

Apply

All Scopes
 Cell=wsbeta055Cell1
 Node=wsbeta055Node1
 Node=wsbeta055Node1, Server=server1

Preferences

New Delete

Select	Name	Scope	Description
<input type="checkbox"/>	Derby JDBC Provider	Node=wsbeta055Node1,Server=server1	Derby embedded non-XA JDBC Provider
<input type="checkbox"/>	Derby JDBC Provider (XA)	Cell=wsbeta055Cell1	Built-in Derby JDBC Provider (XA)
<input type="checkbox"/>	Derby JDBC Provider (XA)	Node=wsbeta055Node1,Server=server1	Built-in Derby JDBC Provider (XA)
<input type="checkbox"/>	Derby Network Server Using Derby Client (XA)	Node=wsbeta055Node1,Server=server1	Derby NetworkServer (XA) Provider that uses the Derby Client. This provider is only configurable in version 7.0 and later nodes
<input type="checkbox"/>	Samples Derby JDBC Provider (XA)	Node=wsbeta055Node1,Server=server1	Built-in Derby JDBC Provider (XA)

Total 5

Resource Scope Options

All Scope :

- Displays all resources within the entire topology
- Not a valid choice for "New" resource action

Cell :

- Displays only resources defined at the cell level

Node :

- Displays only resources defined at the node level

Node, Server :

- Displays resources defined at the server level

Cluster :

- Displays resources defined for a cluster

Advantages:

- Selection of scope is made more user friendly by selecting from a pull-down - reduces key strokes compared to V6.0.2 and older releases
- Ability to view collection of all resources in one glance

This slide shows how the administrative console reduces the confusion associated with multiple scopes of configuration info. The new pull down menus allow the administrator to easily display all the resources under cell, node, or specific application server. The scope of each resource is clearly shown and it is easy for the administrator to select the scope of interest. It is also easy to view all resources by looking at just one section of the panel.

Application scoped resources

Enterprise Applications > WebSphereBank
Use this page to configure an enterprise application for further configuring of the application or its configuration.

Configuration

General Properties

* Name
WebSphereBank

Application reference validation
Issue warnings

Detail Properties

- Target specific application status
- Startup behavior
- Application binaries
- Class loading and update detection
- Remote request dispatch properties
- Security role to user/group mapping
- View Deployment Description
- Last participant support extension

References

- Application scoped resources
- EJB references
- Shared library references

Enterprise Applications > WebSphereBank > Application scoped resources
Use this page to view the resources that are defined by the enhanced EAR within this application.

Preferences

Name	JNDI name	Resource type	Description
DefaultEJBTimerDataSource	jdbc/DefaultEJBTimerDataSource	DataSource	Default data source for WebSphere EJB Timer Service
MyBank_DS	jdbc/MyBank	DataSource	New JDBC DataSource
MyBank_DS_CF	eis/jdbc/MyBank_CMP	J2CConnectionFactory	

Administrative Console Enhancements © 2006 IBM Corporation 21

- New in V6.1, resources embedded in an Enhanced EAR file can now be viewed and modified from the application configuration panel

Using the Application Server toolkit, bundled with the WebSphere Application Server product, or using the Rational® Application Developer V6 and beyond, you can embed resources with the.

EAR file containing an Enterprise Application to produce an Enhanced Ear file. Previous versions of the administrative console did not provide the administrator with a way to view or modify the resources embedded in the Enhanced EAR file. The administrative console in WebSphere Application Server V6.1 provides the ability to view and modify the resources embedded within the application.. There is no ability to create a new application scoped resource from the console.

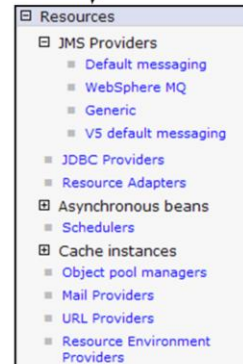
Resource Management Navigation Re-factoring

- Resources navigation panel has been re-factored to expose more relevant and often performed resource actions in the navigation panel of the console
 - ▶ Examples: Exposing JMS queue/topics, Data sources and other Resource provider factories

V6.1 Resource management navigation



Previous V6.0.2 release resource management navigation, shown for comparison



22

Administrative Console Enhancements

© 2006 IBM Corporation

In previous versions of WebSphere Application Server, the navigation panel highlighted the providers and within the context of the provider, you would create the data source. In WebSphere Application Server V6.1, this has been changed so that the focus is on the resource factories. This slide contrasts the navigation panels of the administrative console in WebSphere Application Server V6.1 and that of WebSphere Application Server V6.0.2.

IBM Software Group IBM

New wizards to create JDBC data source

Wizard makes creating data sources easy

2 - Select or create new JDBC provider

1 - Enter Data source Info

3 - Specify Data source properties

Administrative Console Enhancements © 2006 IBM Corporation

For V6.1, a JDBC Data source creation wizard is provided to help users create data sources associated with their applications. This wizard also provides the capability to associate an existing JDBC provider with the data source or to create a new provider. This slide shows the screen that the new wizard presents. Notice that only three steps are needed and that you are guided through the whole sequence.

Section

Cluster management features

This section describes the enhancements to the cluster and cluster member management in the Administrative Console.

Additional information on the topics in this section may be found the WebSphere Application Server V6.1 Information Center.

Cluster creation wizard enhancements

New Guided Activity in V6.1 simplify the whole process of creating clusters and configuring for high availability

Create a new cluster

→ Step 1: Enter basic cluster information

Step 2: Create first cluster member

Step 3: Create additional cluster members

Enter basic cluster information

* Cluster name

MyBank Cluster

Prefer local. Specifies whether enterprise bean requests will be routed to the node on which the client resides when possible.

Configure HTTP session memory-to-memory replication

Create a new cluster

Step 1: Enter basic cluster information

→ Step 2: Create first cluster member

Step 3: Create additional cluster members

Step 4: Summary

Create first cluster member

The first cluster member determines the server settings for the cluster members. Additional cluster members are copied from the first cluster member so that all cluster members will be identical.

* Member name

MyBank CM1

Select node

rhgNode04(ND 6.1.0.0)

* Weight

2 (0..20)

Generate unique HTTP ports

Select basis for first cluster member:

Create the member using an application server template.

default

Create the member using an existing application server as a template.

rhgCell02/rhgNode04(ND 6.1.0.0)/server1

Create the member by converting an existing application server.

rhgCell02/rhgNode04(ND 6.1.0.0)/server1

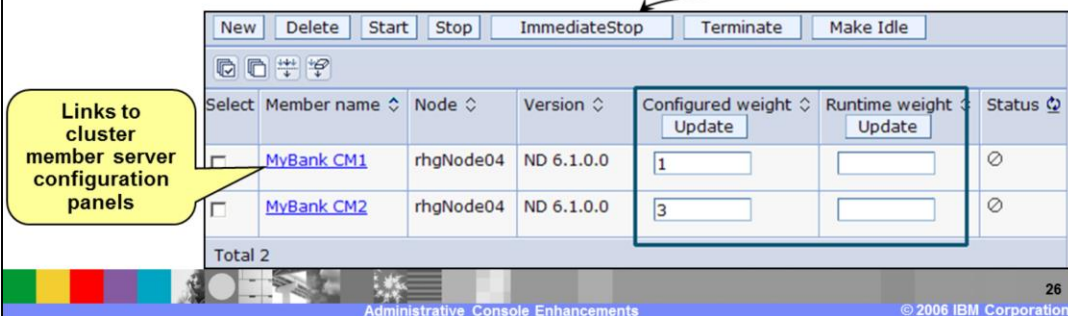
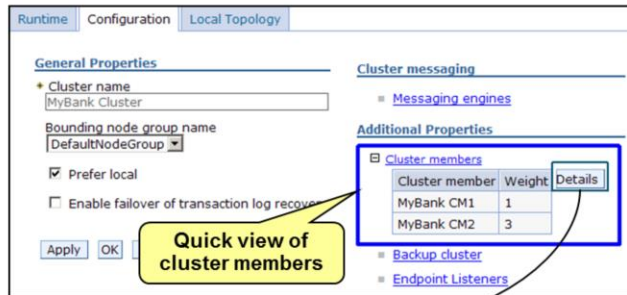
None. Create an empty cluster.

- Create cluster member from an existing template
- Create cluster member using an existing server as a template
- Convert an existing server as a cluster member
- Create cluster without any member

The WebSphere Application Server V6.1 administrative console includes a number of initiatives to simplify the creation of clusters. This slide shows the new guided activity that you can use cluster creation. Only three steps are needed and each requires only a minimal amount of input, yet a considerable amount of flexibility to craft the cluster is still available.

Cluster management console enhancements

- Quick view of the cluster members added to cluster configuration panel
- Enhanced cluster member weight management interface added to cluster member panel
 - Provides ability to dynamically change runtime weights



Other enhancements associated with cluster management include panel re-factoring to show cluster members that are available in the cluster properties panel. This slide shows some of the new panels. In the cluster configuration panel, the cluster members are clearly listed. By selecting the “Details” button, the administrator can go to the panel to configure those members.

In the panel to configure cluster members, there have been enhancements in the handling of weights associated with the cluster members; assigning weights to cluster members allows the administrator to balance the workload within the cluster. In version 6.1, the administrative console allows the administrator to change the runtime weights dynamically without the need for changing the configuration or restarting the servers.

Section

Shared library management features



This section describes enhancements to the shared library management in the Administrative Console.

Additional information on the topics in this section may be found the WebSphere Application Server V6.1 Information Center.

Managing Shared Libraries

- Shared libraries are files used by multiple applications and are defined at the cell, node or server level scopes
- In V6.0, shared libraries had to be defined first and then associated with an application
- In V6.1, shared libraries can be referenced by individual modules within an application – like a web, or EJB module
- In V6.1, several improvements are added to the Administrative Console to define and manage shared libraries:
 - ▶ Map shared libraries to an application or individual modules, from the new application install panels or from an installed application configuration panel
 - ▶ Create a new shared library from within an installed application configuration panel and then map it to the application or modules



Shared libraries are files used by multiple applications. Using the Administrative Console, you can define a shared library at the cell, node, or server level. You can then associate the library to an application or server to load the classes represented by the shared library in either a server-wide or application-specific class loader. In previous versions of WebSphere Application Server, the management of shared libraries was complicated by the requirement of defining shared libraries and mapping them to the servers, applications, and modules that would use them. In WebSphere Application Server V6.1, this requirement is removed and shared libraries may be mapped to an application or module from the application install panels of the administrative console. Additionally, a new shared library may be created and mapped an installed application or module.

Mapping Shared Libraries to Applications

Map shared libraries

Specify shared libraries that the application or individual modules reference. These libraries must be defined in the configuration at the appropriate scope.

Reference shared libraries

Select	Application	URI	Shared Libraries
<input type="checkbox"/>	WebSphereBank	META-INF/application.xml	

Select	Module	URI	Shared Libraries
<input type="checkbox"/>	WebSphereBankWeb	WebSphereBankWeb.war,WEB-INF/web.xml	

Map Shared libraries for new application install or existing application

Mapping is for entire application or individual modules

Select available shared libraries to reference

Define new shared library from this panel

Select the library below in the "Available" list. Move them to the "Selected list by clicking on the >> button.

Available:

- JWLLib
- sharedlib 2

New

>>

<<

Selected:

- sharedlib 3
- sharedlib 1

Selected shared libraries

Administrative Console Enhancements

© 2006 IBM Corporation

29

This slide shows how an administrator can map shared libraries to either an entire application or to an individual module.

The "reference shared Library" button opens a panel where a selector will be presented that shows currently mapped shared libraries and any available shared libraries. From this panel, the administrator can map the existing shared library to the application or create a new shared library.

The option to select the shared libraries during application install is available only when using the normal install path. For fast path install, shared libraries can be referenced using the application configuration panels, after the application has been installed.

Section

Summary

This section summarizes the presentation.

Summary

- V6.1 Administrative Console, built with the common Integrated Solutions Console, provides many enhancements to ease administrative tasks
- Command assistance provides a way to capture the wsadmin scripts of the actions being performed in the console
- Other enhancements discussed in this presentation are:
 - ▶ Application install and configuration
 - ▶ Resource management
 - ▶ Shared libraries management
 - ▶ Cluster management
- Additional information on the topics in this section may be found the WebSphere Application Server V6.1 Information Center.



The Administrative console in WebSphere Application Server V6.1 is built using the Integrated Solutions Console framework and contains enhancements to simplify many administrative tasks.

Command assistance provides a way to capture wsadmin commands associated with a console action. Additional enhancements have been made in application install and configuration, resource management, management of shared libraries, and management of clusters.

Additional information on the topics in this section may be found the WebSphere Application Server V6.1 information center.

Trademarks, Copyrights, and Disclaimers

The following terms are trademarks or registered trademarks of International Business Machines Corporation in the United States, other countries, or both:

IBM	CICS	IMS	MQSeries	Tivoli
IBM (logo)	Cloudscape	Informix	OS/390	WebSphere
eflago/business	DB2	iSeries	OS/400	xSeries
ALX	DB2 Universal Database	Lotus	pSeries	zSeries

Java and all Java-based trademarks are trademarks of Sun Microsystems, Inc. in the United States, other countries, or both.

Microsoft, Windows, Windows NT, and the Windows logo are registered trademarks of Microsoft Corporation in the United States, other countries, or both.

Intel, ActionMedia, LANDesk, MMX, Pentium and ProShare are trademarks of Intel Corporation in the United States, other countries, or both.

UNIX is a registered trademark of The Open Group in the United States and other countries.

Linux is a registered trademark of Linus Torvalds.

Other company, product and service names may be trademarks or service marks of others.

Product data has been reviewed for accuracy as of the date of initial publication. Product data is subject to change without notice. This document could include technical inaccuracies or typographical errors. IBM may make improvements and/or changes in the product(s) and/or program(s) described herein at any time without notice. Any statements regarding IBM's future direction and intent are subject to change or withdrawal without notice, and represent goals and objectives only. References in this document to IBM products, programs, or services does not imply that IBM intends to make such products, programs or services available in all countries in which IBM operates or does business. Any reference to an IBM Program Product in this document is not intended to state or imply that only that program product may be used. Any functionally equivalent program, that does not infringe IBM's intellectual property rights, may be used instead.

Information is provided "AS IS" without warranty of any kind. THE INFORMATION PROVIDED IN THIS DOCUMENT IS DISTRIBUTED "AS IS" WITHOUT ANY WARRANTY, EITHER EXPRESS OR IMPLIED. IBM EXPRESSLY DISCLAIMS ANY WARRANTIES OF MERCHANTABILITY, FITNESS FOR A PARTICULAR PURPOSE OR NONINFRINGEMENT. IBM shall have no responsibility to update this information. IBM products are warranted, if at all, according to the terms and conditions of the agreements (e.g., IBM Customer Agreement, Statement of Limited Warranty, International Program License Agreement, etc.) under which they are provided. Information concerning non-IBM products was obtained from the suppliers of those products, their published announcements or other publicly available sources. IBM has not tested those products in connection with this publication and cannot confirm the accuracy of performance, compatibility or any other claims related to non-IBM products. IBM makes no representations or warranties, express or implied, regarding non-IBM products and services.

The provision of the information contained herein is not intended to, and does not, grant any right or license under any IBM patents or copyrights. Inquiries regarding patent or copyright licenses should be made, in writing, to:

IBM Director of Licensing
IBM Corporation
North Castle Drive
Armonk, NY 10504-1785
U.S.A.

Performance is based on measurements and projections using standard IBM benchmarks in a controlled environment. All customer examples described are presented as illustrations of how those customers have used IBM products and the results they may have achieved. The actual throughput or performance that any user will experience will vary depending upon considerations such as the amount of multiprogramming in the user's job stream, the I/O configuration, the storage configuration, and the workload processed. Therefore, no assurance can be given that an individual user will achieve throughput or performance improvements equivalent to the ratios stated here.

© Copyright International Business Machines Corporation 2005,2006. All rights reserved.

Note to U.S. Government Users - Documentation related to restricted rights-Use, duplication or disclosure is subject to restrictions set forth in GSA ADP Schedule Contract and IBM Corp.