



IBM Software Group

IBM® WebSphere® Application Server V6

Security Administration



@business on demand.

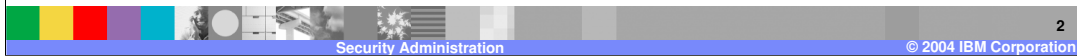
© 2004 IBM Corporation
Updated January 25, 2005

This presentation will focus on the Security Administration.

Goals

- Show the different administration tasks related to WebSphere V6 Security configuration
 - ▶ Most of the configuration is shown using Demos

- Prerequisite:
 - ▶ WebSphere Application Server V6 Security Architecture



The goals for this presentation are to list all the Security Administration tasks and show how to perform the tasks using demos.

Understanding WebSphere Application Server V6 Security Architecture, available in another presentation, will be very helpful.

Section

WebSphere V6 Security Administration Tasks



The next section discusses all the Security administrative tasks.

WebSphere V6 Security Administration






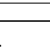

- Security features in all WebSphere Application Server V6 packages are the same
- Global Security must be enabled
- The security configuration is cell wide in Network Deployment cell
 - ▶ DMgr, all Node Agents and all Servers will have the same security configuration settings
- Some local security override is permitted on individual Application Servers within a Network Deployment Cell
 - ▶ Example: Turning off Application security or turning off Java™ 2 Security for an Application Server within the cell



WebSphere Application Server V5 Express did not have all the security functions as V5 Network Deployment. In V6, all packages have the same security capabilities.

In a Network Deployment cell, the security setting is global for authentication type and registries – You cannot have separate authentication types or user registries for different servers within the cell. However, on a per server basis, you might turn off certain capabilities like Java 2 security or J2EE Application Security, if the applications running on that server are trusted and may not need those security settings – it improves performance by turning them off when not needed.



Security Administrator Tasks

Task	Options	Comments
Setting Global Security	OFF ON	WebSphere Security is enabled ONLY after turning global security ON
Setting Authentication mechanism	(1) Simple WebSphere Authentication Mechanism (SWAM)  (2) Lightweight Third Party Authentication (LTPA) 	If Global Security is ON, you must specify the Authentication mechanism and User Registry
Setting Authentication User Registry – All options apply to all authentication mechanism	(1) Local OS  (2) LDAP user registry  (3) Custom Registry 	
Setting Administrative Security – who can Administer WebSphere environment	One of the four roles: Administrator, Configurator, Operator, Monitor 	Setting Administrative permissions to Users/Groups
Setting SSL configuration repertoires	Contains several settings – JSSE provider, Protocol, Key and Trust File information, and so on. 	Used for SSL setting for various functions (HTTP, TCP/IP, RMI/IIOP, SOAP, Messaging, etc.)

This page and the next one shows in a tabular form, all the security administrative tasks from top to bottom – In many cases, there are small show Me demos that quickly show you how to achieve that specific task.

Click the show me for a small demo of a particular task.

Security Administrator Tasks (cont.)

Task	Options	Comments	Show Me
Setting Resource Authentication and Authorization configuration	Contains several configuration settings	Used for Resources like JDBC, J2C, Service Integration Bus, JMS.	Provided in Resource presentation
Authentication Protocol settings for EJBs: IBM SAS and CSv2	Separate settings for incoming and outgoing requests	Used for authenticating RMI-IIOOP calls to EJBs	
Application Security Information: Java 2 Security	Settings are provided by policy files at several different levels (details discussed in Java 2 Security presentation)	Used to secure the system resources (files, sockets, OS resources, and so on) from malicious code	N/A
Application Security Information: J2EE Authorization Provider (Security Role to User/Group)	<ul style="list-style-type: none"> ▪ Default Authorization ▪ External Authorization using JACC provider (like TAM) 		N/A 
Web Services Security Default Binding information	Contains several settings detailed in the Web Services Security presentation	Configuration performed at the Cell level which can be overridden at the Server level	N/A

Click the show me for a small demo of a particular task.

Setting of resource security, like JDBC, JMS, Service Integration Bus, are discussed in a separate presentation.

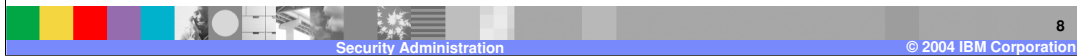
Section

Summary and Reference

The next section discusses the summary and references.

Summary

- This presentation gave you an overview of WebSphere Application Server V6 Security Administration tasks
- References:
 - ▶ WebSphere Application Server V6 Information Center



In summary, this presentation has focused on giving you an overview of the security administration tasks within WebSphere Application Server V6.

The many Flash demo's provided will show you how to configure those tasks. For more information, refer to the WebSphere V6 Information Center

Trademarks, Copyrights, and Disclaimers

The following terms are trademarks or registered trademarks of International Business Machines Corporation in the United States, other countries, or both:

IBM	CICS	IMS	MQSeries	Tivoli
IBM (logo)	Cloudscape	Informix	OS/390	WebSphere
e(logo)/business	DB2	iSeries	OS/400	xSeries
AIX	DB2 Universal Database	Lotus	pSeries	zSeries

Java and all Java-based trademarks are trademarks of Sun Microsystems, Inc. in the United States, other countries, or both.

Microsoft, Windows, Windows NT, and the Windows logo are registered trademarks of Microsoft Corporation in the United States, other countries, or both.

Intel, ActionMedia, LANDesk, MMX, Pentium and ProShare are trademarks of Intel Corporation in the United States, other countries, or both.

UNIX is a registered trademark of The Open Group in the United States and other countries.

Linux is a registered trademark of Linus Torvalds.

Other company, product and service names may be trademarks or service marks of others.

Product data has been reviewed for accuracy as of the date of initial publication. Product data is subject to change without notice. This document could include technical inaccuracies or typographical errors. IBM may make improvements and/or changes in the product(s) and/or program(s) described herein at any time without notice. Any statements regarding IBM's future direction and intent are subject to change or withdrawal without notice, and represent goals and objectives only. References in this document to IBM products, programs, or services does not imply that IBM intends to make such products, programs or services available in all countries in which IBM operates or does business. Any reference to an IBM Program Product in this document is not intended to state or imply that only that program product may be used. Any functionally equivalent program, that does not infringe IBM's intellectual property rights, may be used instead.

Information is provided "AS IS" without warranty of any kind. THE INFORMATION PROVIDED IN THIS DOCUMENT IS DISTRIBUTED "AS IS" WITHOUT ANY WARRANTY, EITHER EXPRESS OR IMPLIED. IBM EXPRESSLY DISCLAIMS ANY WARRANTIES OF MERCHANTABILITY, FITNESS FOR A PARTICULAR PURPOSE OR NONINFRINGEMENT. IBM shall have no responsibility to update this information. IBM products are warranted, if at all, according to the terms and conditions of the agreements (e.g., IBM Customer Agreement, Statement of Limited Warranty, International Program License Agreement, etc.) under which they are provided. Information concerning non-IBM products was obtained from the suppliers of those products, their published announcements or other publicly available sources. IBM has not tested those products in connection with this publication and cannot confirm the accuracy of performance, compatibility or any other claims related to non-IBM products. IBM makes no representations or warranties, express or implied, regarding non-IBM products and services.

The provision of the information contained herein is not intended to, and does not, grant any right or license under any IBM patents or copyrights. Inquiries regarding patent or copyright licenses should be made, in writing, to:

IBM Director of Licensing
IBM Corporation
North Castle Drive
Armonk, NY 10504-1785
U.S.A.

Performance is based on measurements and projections using standard IBM benchmarks in a controlled environment. All customer examples described are presented as illustrations of how those customers have used IBM products and the results they may have achieved. The actual throughput or performance that any user will experience will vary depending upon considerations such as the amount of multiprogramming in the user's job stream, the I/O configuration, the storage configuration, and the workload processed. Therefore, no assurance can be given that an individual user will achieve throughput or performance improvements equivalent to the ratios stated here.

© Copyright International Business Machines Corporation 2004. All rights reserved.

Note to U.S. Government Users - Documentation related to restricted rights-Use, duplication or disclosure is subject to restrictions set forth in GSA ADP Schedule Contract and IBM Corp.