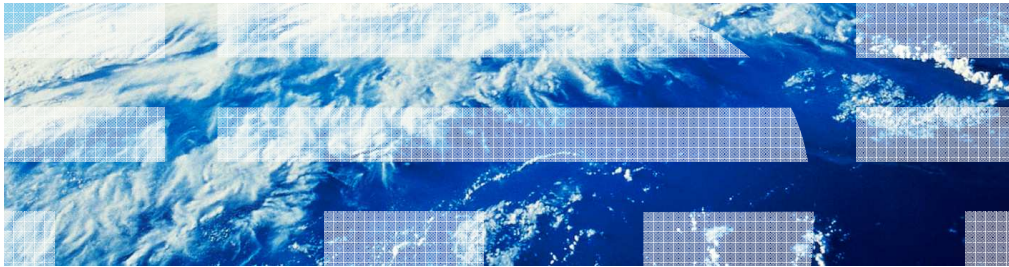


IBM Tivoli Service Automation Manager V7.2.2

Backing up and restoring server images



© 2012 IBM Corporation

In this training module, you learn how to back up and restore server images with Tivoli® Service Automation Manager V7.2.2.

Objectives

When you have completed this training module, you can accomplish these tasks:

- Back up a server to an image
- Restore a server from an image

When you have completed this training module, you know how to backup and restore server images in Tivoli Service Automation Manager version 7.2.

Backing up a server image (1 of 6)

- Log in to the self-service graphical user interface

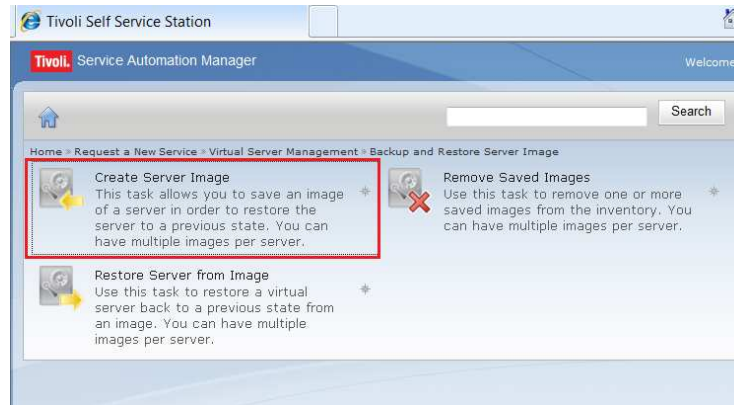


Make a backup image before provisioning new software onto a system. Log in with a valid username and password.

Backing up a server image (2 of 6)

- From the home page, select:

Request a New Service > Virtual Server Management > Backup and Restore Server Image > Create Server Image



4

Backing up and restoring server images

© 2012 IBM Corporation

After logging in, navigate to **Create a Server Image**. This slide shows the path as **Request a New Service, Virtual Server Management, Backup and Restore Server Images, and Create Server Image**.

Backing up a server image (3 of 6)

- In the **Create Server Image** panel specify **Name of Virtual Server Image**
- Select a **Project Name** and **Server Name**
- Insert a **Description** and click **OK**

Project Name	Project Description	Project Type	Start Date	End Date	Team Access	Total Server(s)	Active Server(s)
Win proj for Sam	Windows project for Sam	PDP	6/11/12 11:01 PM	6/12/12 11:05 PM	L2	1	1

Select	Server Name	Hypervisor	Status	Memory	CPU	Disk
▼	nc117084	VMware	Created	8,098 GB	1	20 GB

5

Backing up and restoring server images

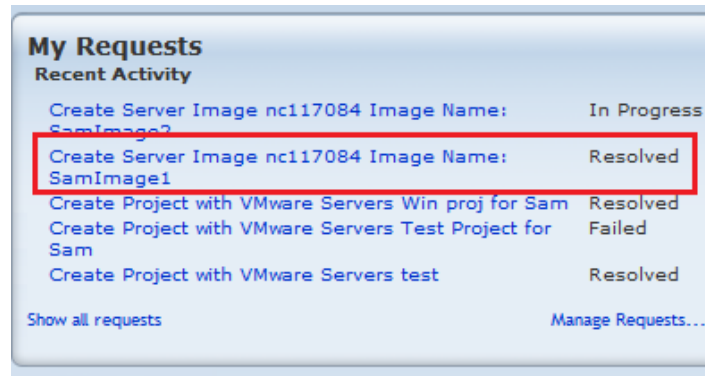
© 2012 IBM Corporation

Create a name for the virtual server image. Select from the available project names and insert a brief description for this backup image.

Fill in the previous fields, then click **OK**.

Backing up a server image (4 of 6)

- Check the status of the request in the My Requests Recent Activity portlet on the self-service user interface



Monitor the backup image request status in the **My Requests** portlet. Requests progress from **New** to **Queued**, **Queued** to **In Progress**, and **In Progress** to either **Failed** or **Resolved**.

Backing up a server image (5 of 6)

- When the request is resolved, to check the image details, click **Manage Servers** in the **My Projects** portlet



When the request completes, click **Manage Servers** in the **My Projects** portlet. View details for the newly created backup server image.

Backing up a server image (6 of 6)

- View the recently created image in the **Saved Images for this Server** section of **Manage Servers**

The screenshot displays the 'Manage Servers' interface. At the top, there is a table listing servers:

Select	Server Name	Management Name	Hypervisor	Memory (%)	CPU (%)
<input type="radio"/>	nc117079	...	VMware
<input checked="" type="radio"/>	nc117084	...	VMware

Below this table, the details for the selected server 'nc117084' are shown:

Server: nc117084

General		CPU	Disk
Hypervisor	VMware	Virtual	1 Local
Provisioning Status	Created	Physical	0.1
Last provisioning status update	6/11/2012 11:31 PM	Memory	
		Physical	0.098 GB
		Swap	0 GB

At the bottom, the 'Saved Images for this Server' section contains a table:

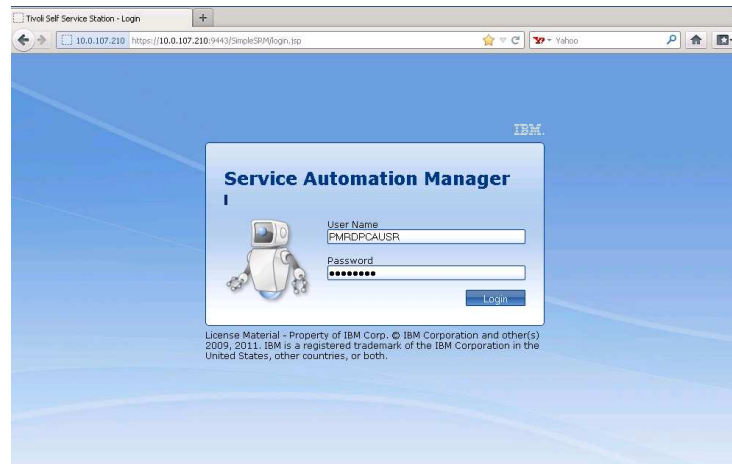
Image Name	Date	Creator	Description
SamImage1	6/11/2012 11:46 PM	PMRDPCAUSR	Image1 for win proj for sam
SamImage2	6/12/2012 2:22 PM	PMRDPCAUSR	Image2 for win proj for sam

A red arrow points to the 'SamImage1' entry in the table.

View the newly created backup image by going to **Manage Servers > Saved Images for this Server**.

Restoring a server from an image (1 of 3)

- Log in to the self-service user interface

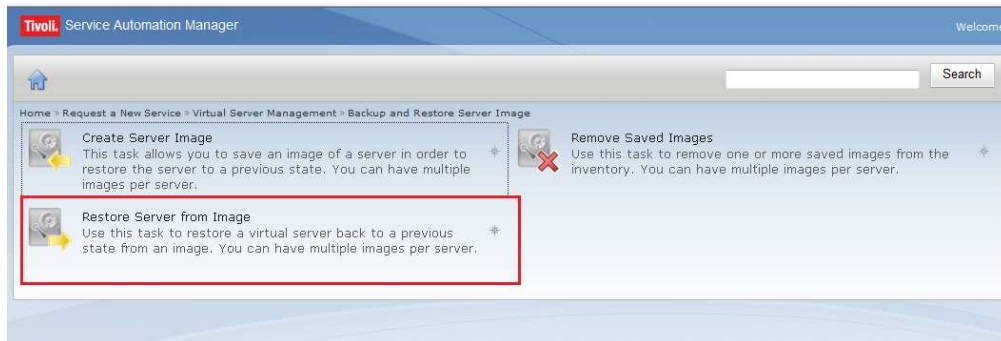


Log in to the self-service user interface in order to begin restoring a server from an image.

Restoring a server from an image (2 of 3)

- From the self-service user interface home page select:

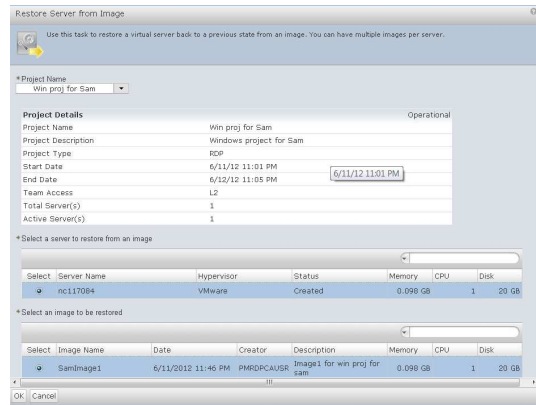
Request a New Service > Virtual Server Management > Backup and Restore Server Image > Restore Server from Image



When logged in, select **Request a New Service, Virtual Server Management, Backup and Restore Server Images**, and click **Restore Server from Image**.

Restoring a server from an image (3 of 3)

- In the Restore Server from Image panel, select **Project Name**, **Server Name**, and **Image Name**
- Click **OK**



11

Backing up and restoring server images

© 2012 IBM Corporation

After selecting the **Restore Server from Image** entry, select the **Project Name**, the **Server Name**, and the **Image Name**.

Next, click **OK**. A Service Request is submitted, and when it is resolved, the server image is restored.

Summary

Now that you have completed this training module, you can accomplish these tasks:

- Back up a server to an image
- Restore a server from an image

Now that you have completed this training module, you can backup and restore server images in Tivoli Service Automation Manager version 7.2.

Feedback

Your feedback is valuable

You can help improve the quality of IBM Education Assistant content to better meet your needs by providing feedback.

- Did you find this module useful?
- Did it help you solve a problem or answer a question?
- Do you have suggestions for improvements?

Click to send email feedback:

mailto:iea@us.ibm.com?subject=Feedback_about_bu_restore_svr_images.ppt

This module is also available in PDF format at: [../bu_restore_svr_images.pdf](..../bu_restore_svr_images.pdf)

You can help improve the quality of IBM Education Assistant content by providing feedback.



Trademarks, disclaimer, and copyright information

IBM, the IBM logo, ibm.com, and Tivoli are trademarks or registered trademarks of International Business Machines Corp., registered in many jurisdictions worldwide. Other product and service names might be trademarks of IBM or other companies. A current list of other IBM trademarks is available on the web at "[Copyright and trademark information](http://www.ibm.com/legal/copytrade.shtml)" at <http://www.ibm.com/legal/copytrade.shtml>

THE INFORMATION CONTAINED IN THIS PRESENTATION IS PROVIDED FOR INFORMATIONAL PURPOSES ONLY. WHILE EFFORTS WERE MADE TO VERIFY THE COMPLETENESS AND ACCURACY OF THE INFORMATION CONTAINED IN THIS PRESENTATION, IT IS PROVIDED "AS IS" WITHOUT WARRANTY OF ANY KIND, EXPRESS OR IMPLIED. IN ADDITION, THIS INFORMATION IS BASED ON IBM'S CURRENT PRODUCT PLANS AND STRATEGY, WHICH ARE SUBJECT TO CHANGE BY IBM WITHOUT NOTICE. IBM SHALL NOT BE RESPONSIBLE FOR ANY DAMAGES ARISING OUT OF THE USE OF, OR OTHERWISE RELATED TO, THIS PRESENTATION OR ANY OTHER DOCUMENTATION. NOTHING CONTAINED IN THIS PRESENTATION IS INTENDED TO, NOR SHALL HAVE THE EFFECT OF, CREATING ANY WARRANTIES OR REPRESENTATIONS FROM IBM (OR ITS SUPPLIERS OR LICENSORS), OR ALTERING THE TERMS AND CONDITIONS OF ANY AGREEMENT OR LICENSE GOVERNING THE USE OF IBM PRODUCTS OR SOFTWARE.

© Copyright International Business Machines Corporation 2012. All rights reserved.