

IBM Tivoli Key Lifecycle Manager 2.0

Configure a device manually



This is a self-running demonstration that shows you how to complete a task.
Controls are available at the bottom of the screen.

© 2010 IBM Corporation

Tivoli Integrated Portal - Mozilla Firefox

File Edit View History Bookmarks Tools Help

← → ↻ 🏠 [tivoli.edu https://tklm.tivoli.edu:16316/ibm/console/login.do?action=secure](https://tklm.tivoli.edu:16316/ibm/console/login.do?action=secure) ☆ Google

Most Visited Novell Getting Started Latest Headlines Mozilla Firefox

Tivoli Integrated Portal

Tivoli. View: All tasks Welcome TKLMAd

Welcome to Tivoli Key Lifecycle Manager - Version 2.0

Welcome to Tivoli Key Lifecycle Manager - Version 2.0

Action Items

Pending Device Requests | Key Groups and Certificates

There are no action items. | There are no action items.

Last backup: Thursday, October 7, 2010 10:03:09 PM UTC

Key and Device Management

Guided key and device creation:

Select device group [Go]

Manage keys and devices:

LTO [Go]

Manage default rollover:

Select device group [Go]

Available Protocols

IP address: localhost
TCP port: 3801

[SSL protocol](#): Configured
[SSL port](#): 441

[IKEv2-SCSI protocol](#): Configured
[KMIP protocol](#): Configured
[KMIP SSL port](#): 5696

Select the device type, for example LTO.

Click Go.

Done

Computer Tivoli Integrated Portal - Mozilla Firefox Terminal Fri Oct 8, 0:13

Tivoli Integrated Portal - Mozilla Firefox

File Edit View History Bookmarks Tools Help

← → ↻ 🏠 🔍 tivoli.edu https://tklm.tivoli.edu:16316/ibm/console/login.do?action=secure ☆ Google

Most Visited Novell Getting Started Latest Headlines Mozilla Firefox

Tivoli Integrated Portal

Tivoli. View: All tasks Welcome TKLMAdmin Help Logout IBM

Key and Device Management

Key and Device Management

LTO

The keys below are available to encrypt data written to a device or to decrypt data read from a storage device. In order to ensure a certain key will be used for a storage device's write requests, map the key to that device.

View Key Groups and Drives Add Modify Delete

Key Group
Tape Drive

Use step-by-step process for key groups, keys and drive creation

nowkeys	Default	100
---------	---------	-----

Hold new device requests pending my approval

Click Add > Tape Drive.

Done

Computer Tivoli Integrated Portal - Mozilla Firefox Terminal Fri Oct 8, 0:14

The screenshot shows a web browser window titled "Tivoli Integrated Portal - Mozilla Firefox" with the URL <https://tklm.tivoli.edu:16316/ibm/console/login.do?action=secure>. The page content includes a navigation menu on the left with items like "Welcome", "My Startup Pages", "Tivoli Key Lifecycle Manager", and "Settings". The main area is titled "Key and Device Management" and displays a dialog box titled "Add Tape Drive".

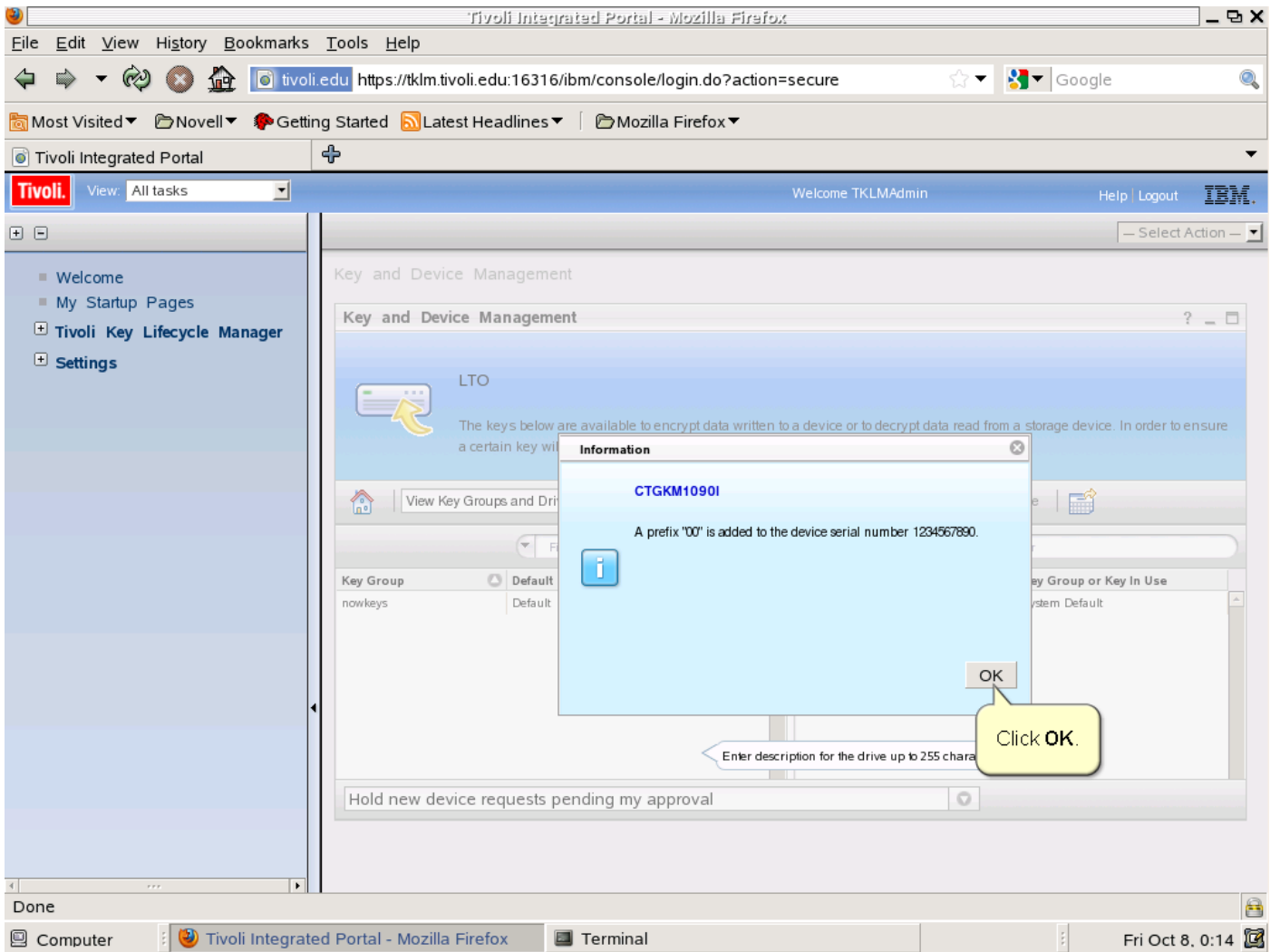
The "Add Tape Drive" dialog box contains the following fields and options:

- *Device serial number: 1234567890
- Key group or key in use:
 - Default
 - Key group: [dropdown menu]
 - Key: [text field]
- Description: [text area]
- Buttons: Add Tape Drive, Cancel

Two yellow callout boxes provide instructions:

- One points to the "Device serial number" field with the text: "Type the device serial number."
- Another points to the "Add Tape Drive" button with the text: "Click Add Tape Drive."

The bottom of the browser window shows a taskbar with "Done", "Computer", "Tivoli Integrated Portal - Mozilla Firefox", and "Terminal" tabs. The system clock indicates "Fri Oct 8, 0:14".



Trademarks, copyrights, and disclaimers

IBM, the IBM logo, ibm.com, and Tivoli are trademarks or registered trademarks of International Business Machines Corp., registered in many jurisdictions worldwide. Other product and service names might be trademarks of IBM or other companies. A current list of other IBM trademarks is available on the web at "[Copyright and trademark information](http://www.ibm.com/legal/copytrade.shtml)" at <http://www.ibm.com/legal/copytrade.shtml>

THE INFORMATION CONTAINED IN THIS PRESENTATION IS PROVIDED FOR INFORMATIONAL PURPOSES ONLY, in the United States, other countries, or both.

THE INFORMATION CONTAINED IN THIS PRESENTATION IS PROVIDED FOR INFORMATIONAL PURPOSES ONLY. WHILE EFFORTS WERE MADE TO VERIFY THE COMPLETENESS AND ACCURACY OF THE INFORMATION CONTAINED IN THIS PRESENTATION, IT IS PROVIDED "AS IS" WITHOUT WARRANTY OF ANY KIND, EXPRESS OR IMPLIED. IN ADDITION, THIS INFORMATION IS BASED ON IBM'S CURRENT PRODUCT PLANS AND STRATEGY, WHICH ARE SUBJECT TO CHANGE BY IBM WITHOUT NOTICE. IBM SHALL NOT BE RESPONSIBLE FOR ANY DAMAGES ARISING OUT OF THE USE OF, OR OTHERWISE RELATED TO, THIS PRESENTATION OR ANY OTHER DOCUMENTATION. NOTHING CONTAINED IN THIS PRESENTATION IS INTENDED TO, NOR SHALL HAVE THE EFFECT OF, CREATING ANY WARRANTIES OR REPRESENTATIONS FROM IBM (OR ITS SUPPLIERS OR LICENSORS), OR ALTERING THE TERMS AND CONDITIONS OF ANY AGREEMENT OR LICENSE GOVERNING THE USE OF IBM PRODUCTS OR SOFTWARE.

© Copyright International Business Machines Corporation 2010. All rights reserved.