

---

# Sterling Connect:Direct File Agent V1.4

Generating multiple configurations by using templates

© 2016 IBM Corporation



This presentation shows you how to use a configuration template to produce multiple Sterling Connect:Direct File Agent configurations.

## This presentation covers:

- Configuring Connect:Direct FileAgent (CDFA) by using templates and configuration files
- How to use the CDFA configuration GUI to generate a configuration template
- How to build a configuration file, and load it into CDFA for use

This presentation assumes that you are familiar with configuring CDFA

This presentation covers how to configure the Sterling Connect:Direct File Agent, or CDFA, by using templates and configuration files. It will also cover how to use the Connect:Direct FileAgent configuration GUI to generate configuration templates.

Finally, you will see how to build a configuration file and load the file into Connect:Direct FileAgent for use.

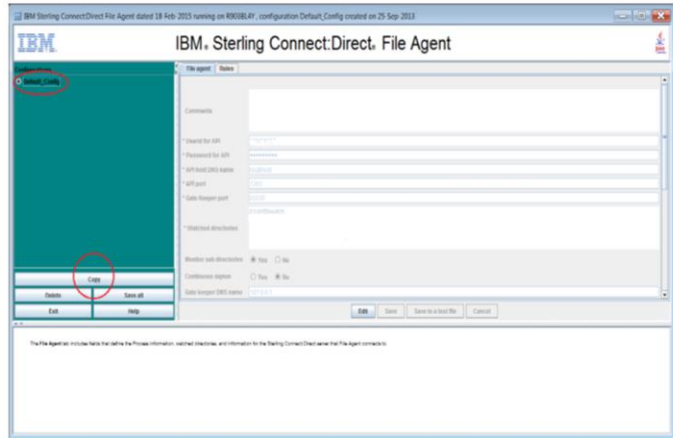
As a Connect:Direct administrator, you might need to generate multiple configurations for multiple instances of CDFA for subsequent distribution throughout your organization. This example looks at how you can use the CDFA configuration GUI to create a skeleton template file. Then, you use a text configuration file to provide input to the template. You generate one or more CDFA configurations (.ser) files for this purpose, by using the command `cdfa -g`. The resulting configuration files can then be sent to client sites, reducing the amount of configuration that the Sterling Connect: Direct File Agent site needs to perform.

For this presentation, it is assumed that you are already familiar with the basics of configuring and by using the Connect:Direct FileAgent.

## Copy your existing File Agent configuration

Make a copy of your existing configuration.

- Start the configurator GUI by invoking 'CDFA -C' from the command line
- Select your current configuration
- Click 'copy'.
- Click 'yes' for 'Do you want to copy the selected configuration?'
- Name your template configuration



In order to create a template configuration, into which configuration data can be loaded, make a copy of your existing configuration.

The steps are

Start the configurator GUI by invoking 'CDFA -C' from the command line, from within your CDFA installation directory. The configurator GUI will start.

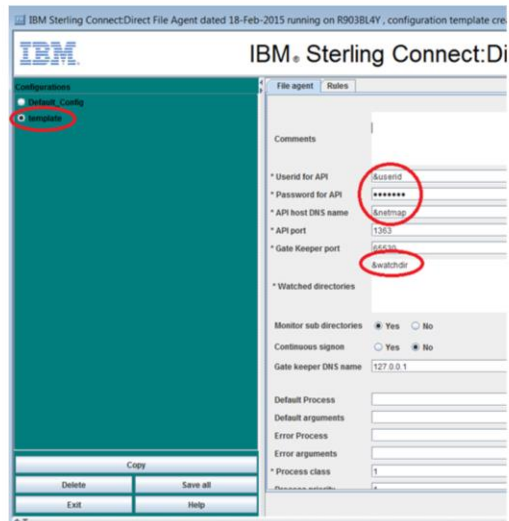
Select your current configuration, then click 'copy'.

When you see the question, 'Do you want to copy the selected configuration?', click 'yes'.

Provide a name for your template configuration when prompted. In this example, you will call it 'template'.

## Edit your template configuration

- Select your 'template' installation
- Replace the values with variable names
- Once you update the variables, click 'Save'
- You will have a new configuration file in your FileAgent directory, template.ser



4

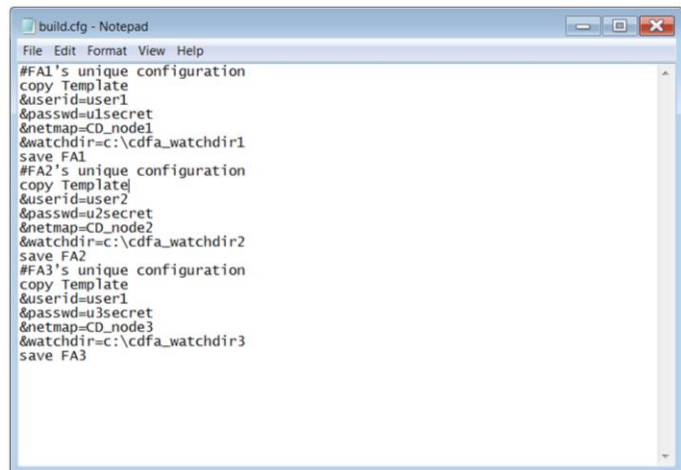
© 2016 IBM Corporation

Select your 'template' installation.

Replace the values that will differ between configurations with variable names. In this example, you are modifying the user ID and password, the API host DNS name, and the watched directory with &userid, &passwd, &netmap and &watchdir. Once you have the variables that you need in place, click 'Save' to save your changes. You will now find that you have a new configuration file in your FileAgent directory, called template.ser.

## Configuration build file creation

- Use a text editor to create a configuration build file.
- Edit the file to specify "assign values".
- Each CDFA configuration has unique values.
- Save the build.cfg to any directory.



```
build.cfg - Notepad
File Edit Format View Help
#FA1's unique configuration
copy Template
&userid=user1
&passwd=u1secret
&netmap=CD_node1
&watchdir=c:\cdfa_watchdir1
save FA1
#FA2's unique configuration
copy Template1
&userid=user2
&passwd=u2secret
&netmap=CD_node2
&watchdir=c:\cdfa_watchdir2
save FA2
#FA3's unique configuration
copy Template
&userid=user1
&passwd=u3secret
&netmap=CD_node3
&watchdir=c:\cdfa_watchdir3
save FA3
```

5

© 2016 IBM Corporation

Use a text editor to create a configuration build file. Here it is named build.cfg, but you can give the file any name you want.

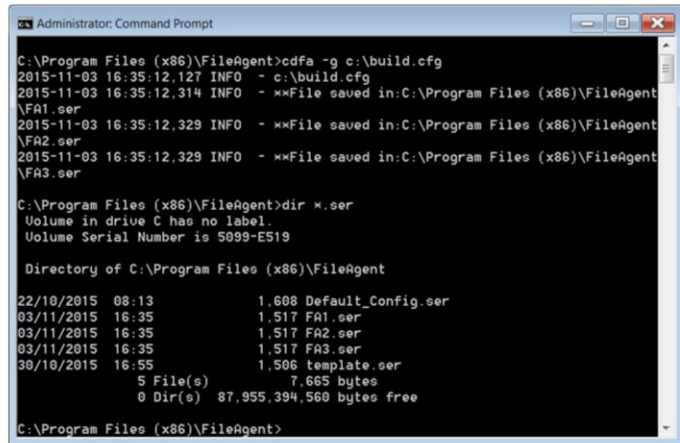
Edit the file to specify "assign values" to the variables for each CDFA instance that you want to generate a configuration for.

As you can see, each CDFA configuration has values unique to itself.

Save the build.cfg to any directory. In this example, it is saved to the c:\ directory

## Create the configuration files

- Change directory to File Agent installation directory
- Run `cdfa -g`
- Generate a configuration file for each set of entries in the build file



```
Administrator: Command Prompt
C:\Program Files (x86)\FileAgent>cdfa -g c:\build.cfg
2015-11-03 16:35:12.127 INFO - c:\build.cfg
2015-11-03 16:35:12.314 INFO - **File saved in:C:\Program Files (x86)\FileAgent
\FA1.ser
2015-11-03 16:35:12.329 INFO - **File saved in:C:\Program Files (x86)\FileAgent
\FA2.ser
2015-11-03 16:35:12.329 INFO - **File saved in:C:\Program Files (x86)\FileAgent
\FA3.ser
C:\Program Files (x86)\FileAgent>dir *.ser
Volume in drive C has no label.
Volume Serial Number is 5099-E519

Directory of C:\Program Files (x86)\FileAgent

22/10/2015 08:13          1,608 Default_Config.ser
03/11/2015 16:35          1,517 FA1.ser
03/11/2015 16:35          1,517 FA2.ser
03/11/2015 16:35          1,517 FA3.ser
30/10/2015 16:55          1,506 template.ser
                5 File(s)              7,665 bytes
                0 Dir(s) 87,955,394,560 bytes free

C:\Program Files (x86)\FileAgent>
```

6

© 2016 IBM Corporation

Open a command window, and change directory to your File Agent installation directory.

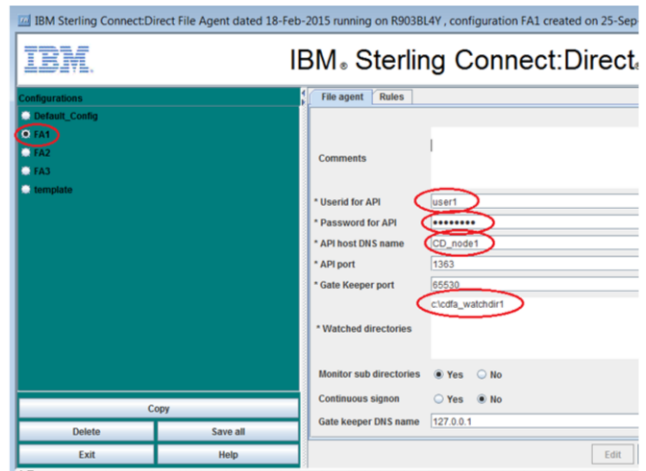
Run the command `cdfa -g` from the command prompt, providing the path and name of your build file as an argument.

As you can see, you generate a configuration file for each set of entries in the build file. In this example, the files are FA1.ser, FA2.ser and FA3.ser.

## You're done!

Check the new configuration files in the CDFA configuration GUI. Send the configuration files to the intended recipient client site

- Copy the configuration file into the File Agent directory
- Rename the configuration file
- File Agent will restart by using the new configuration



7

© 2016 IBM Corporation

If you want, you can check the new configuration files in the CDFA configuration GUI. All you need to do is send the new configuration files to the intended recipient client site, with these instructions:

First, copy the configuration file into the File Agent directory. Next, rename the configuration file to Default\_Config.ser. Finally, your File Agent will restart with the new configuration. You are done.

## Summary

In this module, you learned how to

- Use the CDFA configuration GUI to generate a template configuration
- Create a build file, by using a text editor
- Use the `cdfa -g` command

You completed the presentation on how to use a configuration template to produce multiple Sterling Connect:Direct File Agent configurations.

You first saw how to use the Connect:Direct FileAgent configuration GUI to generate a template configuration.

Next, you saw how to create a build file that contains the required values, by using a text editor. Finally, you saw how to use the `cdfa -g` command to import the values into multiple customized CDFA configuration files.



## Trademarks, disclaimer, and copyright information

IBM, the IBM logo, and [ibm.com](http://www.ibm.com) are trademarks or registered trademarks of International Business Machines Corp., registered in many jurisdictions worldwide. Other product and service names might be trademarks of IBM or other companies. A current list of other IBM trademarks is available on the web at "[Copyright and trademark information](http://www.ibm.com/legal/copytrade.shtml)" at <http://www.ibm.com/legal/copytrade.shtml>

Microsoft, Windows, and the Windows logo are registered trademarks of Microsoft Corporation in the United States, other countries, or both.

Connect.Direct, is a trademark or registered trademark of IBM International Group B.V., an IBM Company.

Other company, product, or service names may be trademarks or service marks of others.

THE INFORMATION CONTAINED IN THIS PRESENTATION IS PROVIDED FOR INFORMATIONAL PURPOSES ONLY. WHILE EFFORTS WERE MADE TO VERIFY THE COMPLETENESS AND ACCURACY OF THE INFORMATION CONTAINED IN THIS PRESENTATION, IT IS PROVIDED "AS IS" WITHOUT WARRANTY OF ANY KIND, EXPRESS OR IMPLIED. IN ADDITION, THIS INFORMATION IS BASED ON IBM'S CURRENT PRODUCT PLANS AND STRATEGY, WHICH ARE SUBJECT TO CHANGE BY IBM WITHOUT NOTICE. IBM SHALL NOT BE RESPONSIBLE FOR ANY DAMAGES ARISING OUT OF THE USE OF, OR OTHERWISE RELATED TO, THIS PRESENTATION OR ANY OTHER DOCUMENTATION. NOTHING CONTAINED IN THIS PRESENTATION IS INTENDED TO, NOR SHALL HAVE THE EFFECT OF, CREATING ANY WARRANTIES OR REPRESENTATIONS FROM IBM (OR ITS SUPPLIERS OR LICENSORS), OR ALTERING THE TERMS AND CONDITIONS OF ANY AGREEMENT OR LICENSE GOVERNING THE USE OF IBM PRODUCTS OR SOFTWARE.

© Copyright International Business Machines Corporation 2016. All rights reserved.