



IBM Software Group | Rational software

# IBM Rational Software Analyzer

## Using Rational Software Analyzer

Rational software



@business on demand.

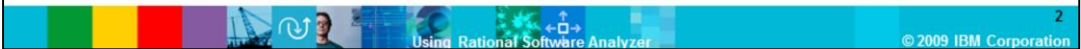
© 2009 IBM Corporation

Converted to video July 8, 2015

This module will cover how to use IBM Rational® Software Analyzer versions 7.0 and higher.

## Module objectives

- **Topics covered in this module:**
  - ▶ **How to use Rational Software Analyzer**
    - Pop-up menu
    - Launch bar
    - Run menu
  - ▶ **What and where to scan**
    - Rational Software Analyzer Analyze Dialog
- **When you complete this module, you are able to:**
  - ▶ Access and use Rational Software Analyzer



This course covers two topics. The first topic provides you with information on how to use Rational Software Analyzer. The second topic covers “what and where to scan”. When you complete this module you will be able to access Rational Software Analyzer from three different places and run it.

## How to use Rational Software Analyzer

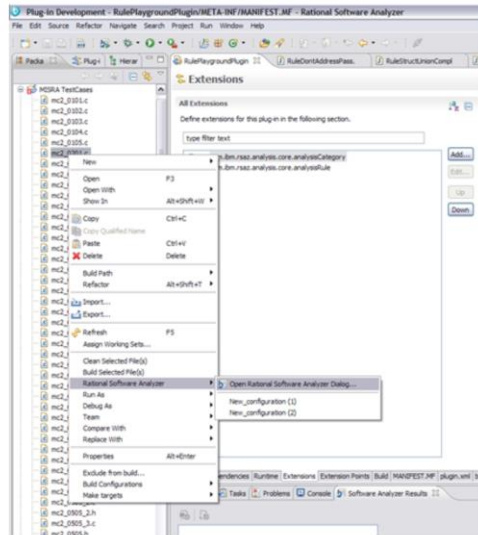
- **To access the Rational Software Analyzer menu there are three places in the Eclipse platform where it is available.**
  - ▶ **Pop-up menu**
    - This can be located by right clicking on the file, project, or other object in the navigation tree.
  - ▶ **Launch bar**
    - The launch menu always shows up at the top of the Eclipse workbench.
  - ▶ **Run menu**
    - The Run menu in the Eclipse shell will have run options for Rational Software Analyzer.



The three places to run Rational Software Analyzer rules are from the pop-up menu, launch bar and run menu. All the options bring up the same run dialog for Rational Software Analyzer. The point here is to make the analysis easy to run no matter who you are or what your role is.

## Pop-up menu

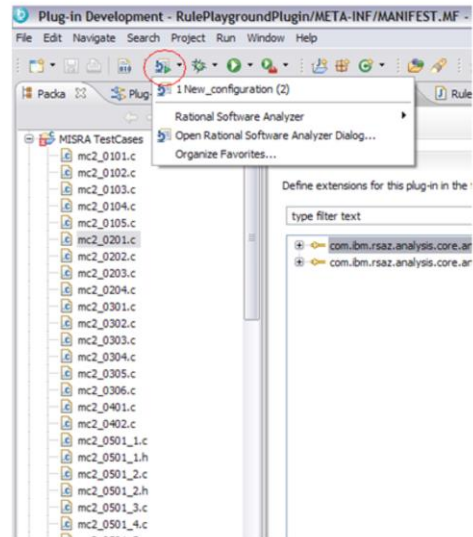
- The pop-up menu option shows up on the navigation tree objects that support the Rational Software Analyzer analyze menu



The pop-up menu shows up on the objects in the Navigation tree that support having the Rational Software Analyzer analyze menu. These can be individual files, folders, or even projects.

## Launch bar

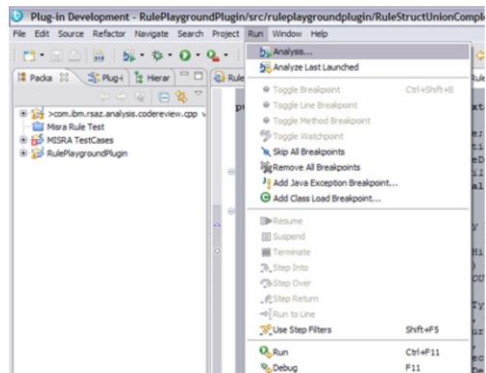
- The red circle to the right indicates the Rational Software Analyzer launch button



Rational Software Analyzer can also be launched from the launch bar in the Eclipse shell. The launch bar by default contains the Debug and Run buttons for Eclipse. It is generally found at the top of the Eclipse workbench. Rational Software Analyzer adds a button next to those that will work the same way that the existing Debug and Run buttons do.

## Run menu

- The Analyze option shows up under the Run menu in the Eclipse shell



The final way to access the Rational Software Analyzer rules is under the Run menu in the Eclipse shell. This extends the same menu as the Run and Debug options. It will bring up the Rational Software Analyzer dialog when selected.

## What and where to scan

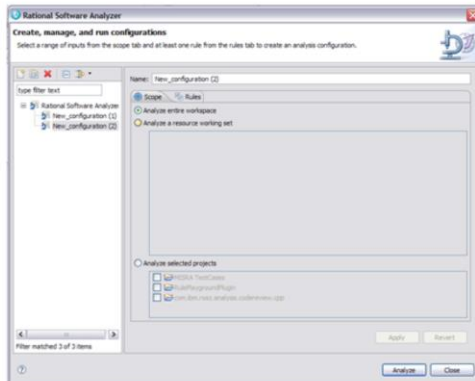
- Rational Software Analyzer Analyze dialog
  - ▶ Selecting the Rational Software Analyzer dialog option brings up the dialog menu
  - ▶ The dialog dictates what is scanned and what you are scanning for
  - ▶ The dialog for Rational Software Analyzer has two main tabs, Scope and Rules
  - ▶ The name field saves whatever options you have selected so the next run will run with the same options



Various methods of getting the Rational Software Analyzer Analyze Dialog have been covered in the previous slides. The next few slides discuss “what is in it”. The Analyze dialog holds all the options for actually doing the analysis. The dialog allows you to set what should be scanned and what you are scanning for. Additionally it allows you to save whatever options you have selected for future runs.

## The scope tab

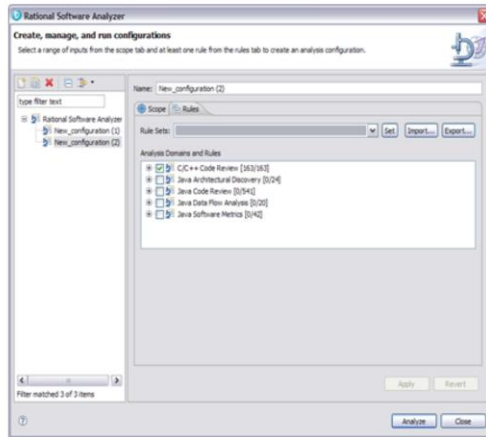
- The granularity of the scan is adjustable from the workspace level to the project level



In the Rational Software Analyzer dialog there is a tab for Scope. From the scope tab, you can control what the scope of the code scan is that Rational Software Analyzer runs. The scope tab is where the granularity of the analysis scan is determined. The scope selection is saved for the next time the scan is run.



## The rules tab



- This tab controls what rules are looked at during the analyze
- The rules are broken down into different categories which can be selected at the category level or all the way down to the individual step

The other tab is the Rules tab. This controls what specific rules the scan is looking for. Just like the Scope tab, the selection here is remembered for the next time this particular scan is run. On a best practice note, make sure that you only select those rules that you are interested in. Running all the rules at once can generate so many results that it is difficult to filter the noise from the real results. To avoid this situation make sure you select the minimum rule filter you can.

## Summary

- There are three ways to access Rational Software Analyzer. The pop-up menu, the run menu, and the launch bar
- The scope and rules tab define what and where to scan



This module provided an overview of accessing Rational Software Analyzer from three different places and running it. You are now familiar with launching Rational Software Analyzer from the pop-up menu, the run menu and the launch bar.

## Additional resources

- **Additional resources on ibm.com**

<http://www-01.ibm.com/software/awdtools/swanalyzer/enterprise/index.html>

<http://www-01.ibm.com/software/awdtools/swanalyzer/enterprise/support/>

[http://www.ibm.com/developerworks/rational/library/08/0429\\_gutz1/index.html?S\\_TACT=105AGX54&S\\_CMP=B0612](http://www.ibm.com/developerworks/rational/library/08/0429_gutz1/index.html?S_TACT=105AGX54&S_CMP=B0612)



Additional resources can be found on the ibm.com Web site and in the Whitepaper on “**Static analysis IBM Rational Software Analyzer: Getting started**”.

# Trademarks, copyrights, and disclaimers

IBM, the IBM logo, ibm.com, and the following terms are trademarks or registered trademarks of International Business Machines Corporation in the United States, other countries, or both:

## Rational

If these and other IBM trademarked terms are marked on their first occurrence in this information with a trademark symbol (® or ™), these symbols indicate U.S. registered or common law trademarks owned by IBM at the time this information was published. Such trademarks may also be registered or common law trademarks in other countries. A current list of other IBM trademarks is available on the Web at "Copyright and trademark information" at <http://www.ibm.com/legal/copytrade.shtml>

Other company, product, or service names may be trademarks or service marks of others.

Product data has been reviewed for accuracy as of the date of initial publication. Product data is subject to change without notice. This document could include technical inaccuracies or typographical errors. IBM may make improvements or changes in the products or programs described herein at any time without notice. Any statements regarding IBM's future direction and intent are subject to change or withdrawal without notice, and represent goals and objectives only. References in this document to IBM products, programs, or services does not imply that IBM intends to make such products, programs or services available in all countries in which IBM operates or does business. Any reference to an IBM Program Product in this document is not intended to state or imply that only that program product may be used. Any functionally equivalent program, that does not infringe IBM's intellectual property rights, may be used instead.

THE INFORMATION PROVIDED IN THIS DOCUMENT IS DISTRIBUTED "AS IS" WITHOUT ANY WARRANTY, EITHER EXPRESS OR IMPLIED. IBM EXPRESSLY DISCLAIMS ANY WARRANTIES OF MERCHANTABILITY, FITNESS FOR A PARTICULAR PURPOSE OR NON-INFRINGEMENT. IBM shall have no responsibility to update this information. IBM products are warranted, if at all, according to the terms and conditions of the agreements (for example, IBM Customer Agreement, Statement of Limited Warranty, International Program License Agreement, etc.) under which they are provided. Information concerning non-IBM products was obtained from the suppliers of those products, their published announcements or other publicly available sources. IBM has not tested those products in connection with this publication and cannot confirm the accuracy of performance, compatibility or any other claims related to non-IBM products.

IBM makes no representations or warranties, express or implied, regarding non-IBM products and services.

The provision of the information contained herein is not intended to, and does not, grant any right or license under any IBM patents or copyrights. Inquiries regarding patent or copyright licenses should be made, in writing, to:

IBM Director of Licensing  
IBM Corporation  
North Castle Drive  
Armonk, NY 10504-1785  
U.S.A.

Performance is based on measurements and projections using standard IBM benchmarks in a controlled environment. All customer examples described are presented as illustrations of how those customers have used IBM products and the results they may have achieved. The actual throughput or performance that any user will experience will vary depending upon considerations such as the amount of multiprogramming in the user's job stream, the I/O configuration, the storage configuration, and the workload processed. Therefore, no assurance can be given that an individual user will achieve throughput or performance improvements equivalent to the ratios stated here.

© Copyright International Business Machines Corporation 2009. All rights reserved.

Note to U.S. Government Users - Documentation related to restricted rights-Use, duplication or disclosure is subject to restrictions set forth in GSA ADP Schedule Contract and IBM Corp.

