

# IBM Rational Developer for Power Systems Software V8.5

## Client installation steps



© 2012 IBM Corporation

This presentation will describe the steps to install the Rational® Developer for Power Systems Software™ product on your machine.

## Download the product

- Visit the following website and select the latest version of the product to download.  
[https://www14.software.ibm.com/webapp/iwm/web/reg/pick.do?lang=en\\_US&source=RATLe-RDp-EVAL&S\\_CMP=web\\_dw\\_rt\\_swf](https://www14.software.ibm.com/webapp/iwm/web/reg/pick.do?lang=en_US&source=RATLe-RDp-EVAL&S_CMP=web_dw_rt_swf)
- After the product is downloaded, unzip the file on your machine.

**Downloads**

To properly configure your download, please review the information below. Select the appropriate offering. When you are done, press the "Continue" button at the bottom.

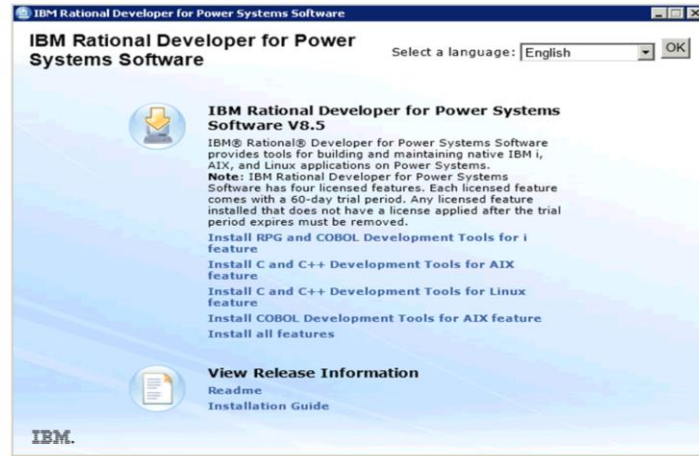
Offering	Platform	Format
<input type="radio"/> IBM Rational Developer for Power Systems V8.5 Trial Multilingual Multiplatform eAssembly Version 8.5 Languages: Chinese Simplified, Chinese Traditional, English, French, German, Italian, Japanese, Korean, Portuguese Brazilian, Spanish	AIX 6 AIX 7 AIX 8 IBM i (i5 formerly i5/OS V3.4) IBM i (i5 formerly i5/OS V5.4) IBM i (i5 formerly i5/OS V7.1) IBM i (i5 formerly i5/OS V7.4) Red Hat Ent Linux RHEL Desktop RHEL6 Red Hat Enterprise Linux (RHEL) Desktop Red Hat Enterprise Linux RHEL Base RHEL Red Hat Enterprise Linux RHEL Adv RHEL6 SUSE Linux Enterprise Desktop(SLED) SUSE Linux Enterprise Server (SLES) Ubuntu 10.04 LTS Windows 7 Enterprise Windows 7 Professional Windows 7 Ultimate Windows Server 2008 Standard Ed Windows XP Professional	download

© 2012 IBM Corporation

If you do not already have the product, you can visit the website listed in order to download the trial version of the product. The trial version comes with a 60-day trial license for each of its four main licensed features. Once the product is downloaded, you will need to extract the file in order to continue with the next step.

## Launchpad (1 of 2)

- As administrator or root, start launchpad.exe on Windows or launchpad.sh on Linux from disk1. Note: for Windows 7, right click launchpad, choose Run as administrator

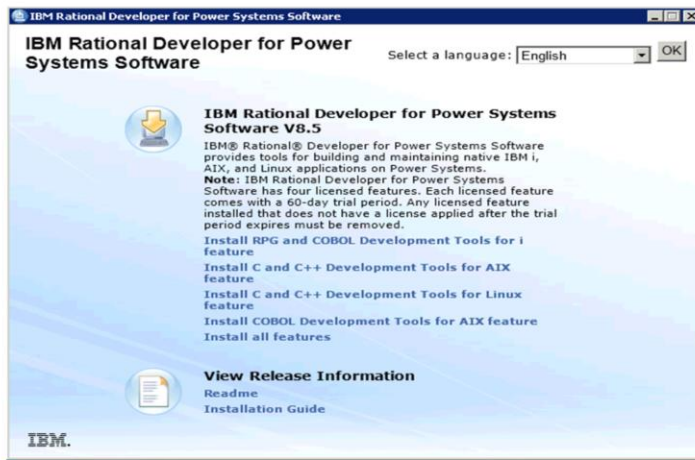


© 2012 IBM Corporation

With the product extracted, you start the launchpad.exe if you are using Windows or the launchpad.sh if you are using Linux. You must be an administrator or root to start the launch pad.

## Launchpad (2 of 2)

- Read the Readme and Installation Guide before proceeding
- Click Install of a specific feature or Install all features (four licensed features).

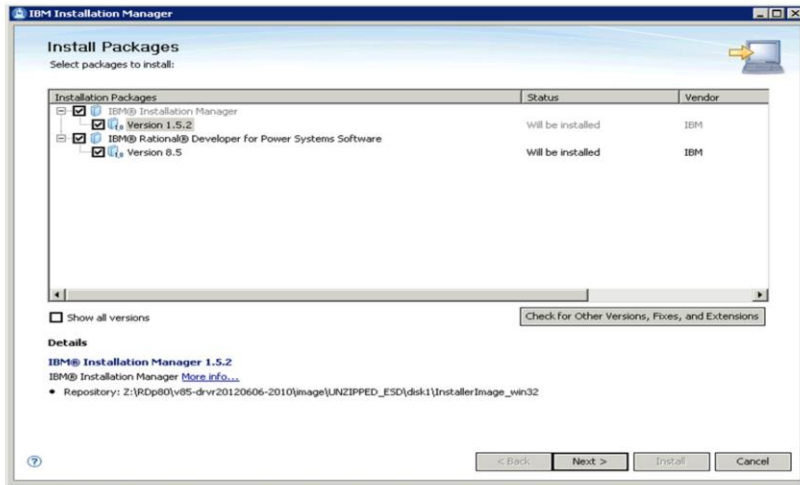


© 2012 IBM Corporation

On the launch pad, you can click the links to view the readme and the installation guide. The installation guide describes the prerequisites of the product. When you are ready, you can choose an installation link for a specific feature of the product or the Install all features link to start the installation of the product.

## Offering

- IBM Installation Manager starts and lists the product
  - If Installation Manager is not installed on the workstation or not at the required level, it will also be installed at the same time

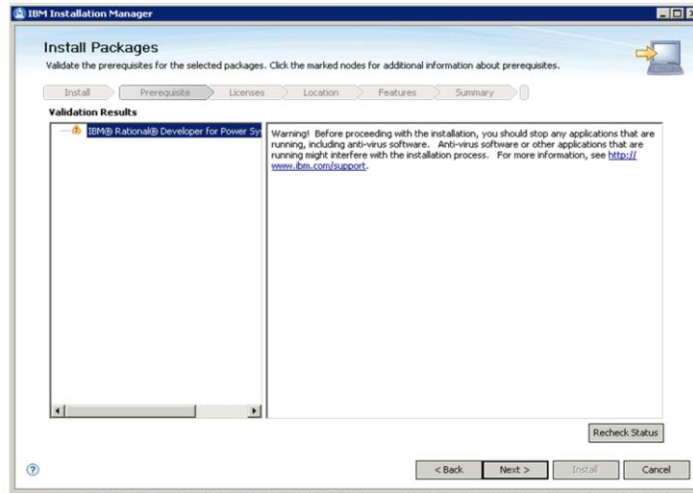


© 2012 IBM Corporation

The IBM Installation Manager starts. It lists the product and the IBM Installation Manager itself if it is not already installed or not at the required level. Click Next to continue.

## Validate the prerequisites

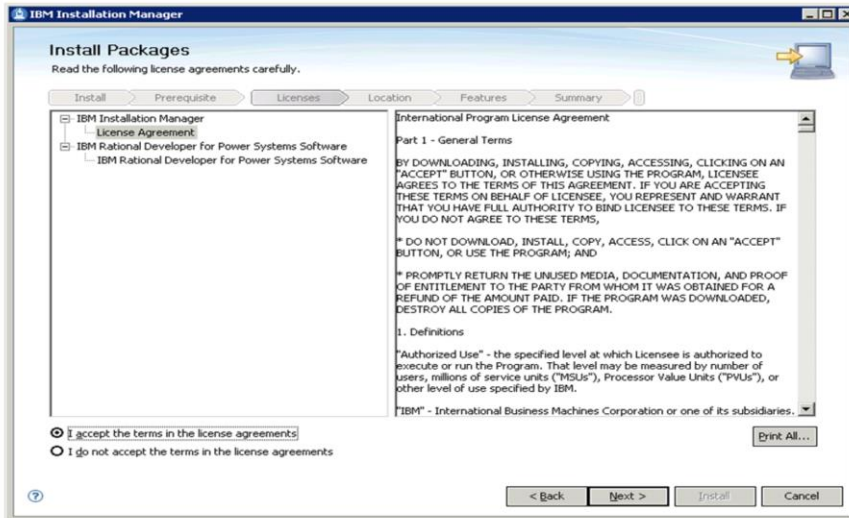
- The validation results are shown
  - Users are recommended to stop running software, include anti-virus



The product validate the prerequisites is shown. You are notified to stop running software, including anti-virus. Click Next to continue.

## License

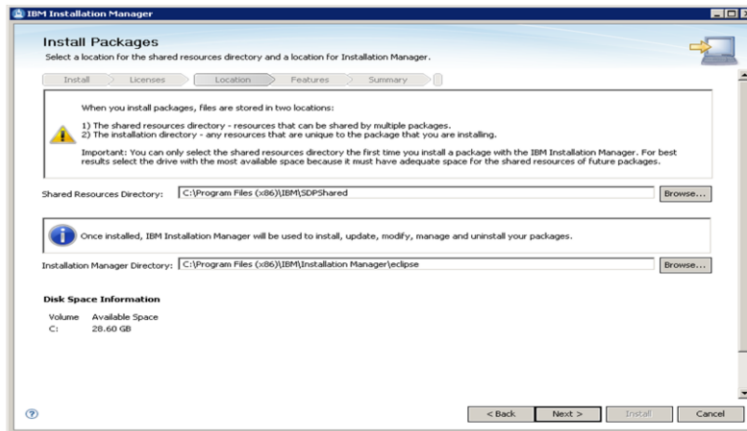
- License is shown and must be accepted to continue with the installation



The product license is shown. You must accept the terms in order to continue with the installation. Click Next to continue.

## Location (1 of 2)

- If this is the first product being installed, you will need to specify the Shared Resources Directory.
  - For best results, select the drive with the most available space.
- If Installation Manager is being installed, you will need to specify the Installation Manager Directory.



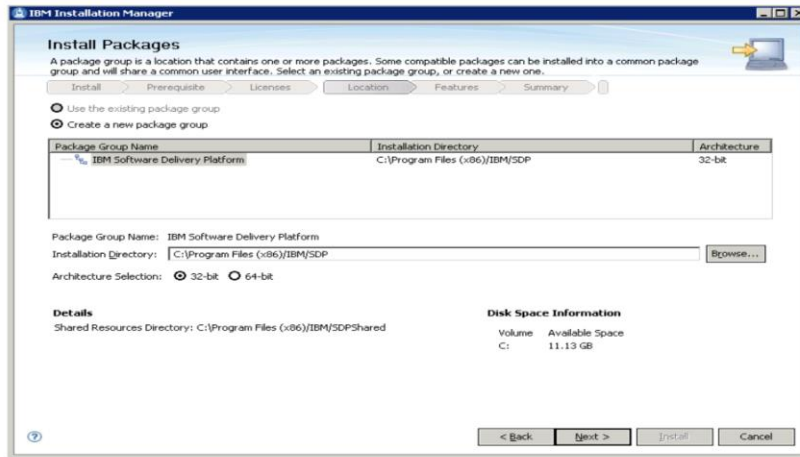
© 2012 IBM Corporation

If this is the first installation of a product, you will need to specify the Shared Resources Directory. For best results, select the drive with the most available space because it must have adequate space for the shared resources of future packages. If Installation Manager is being installed, you will need to specify the Installation Manager directory. If this is not the first installation of a product, and if Installation Manager is already installed, this panel is not displayed. Click Next to continue.



## Location (2 of 2)

- Specify the Installation Directory for the package group
  - If you have other products installed, you could specify to use an existing package group if you want to have one IDE with multiple products' functionality together (for example, shell-sharing).

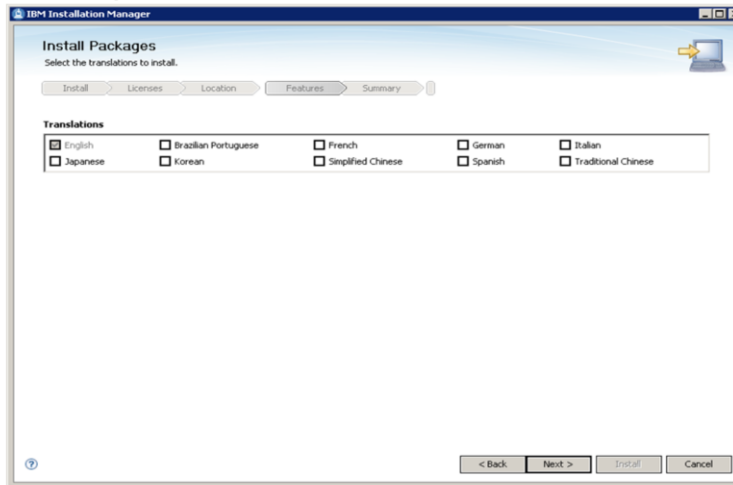


© 2012 IBM Corporation

For the product being installed, you need to specify the installation directory for the package group. If you have other products installed, you could specify to use an existing package group if you want to have one IDE with multiple products' functionality together. On 64-bit operating systems, you can choose either to install as a 32-bit application or a 64-bit application. All products in a package group use the same architecture selection. Click Next to continue.

## Languages

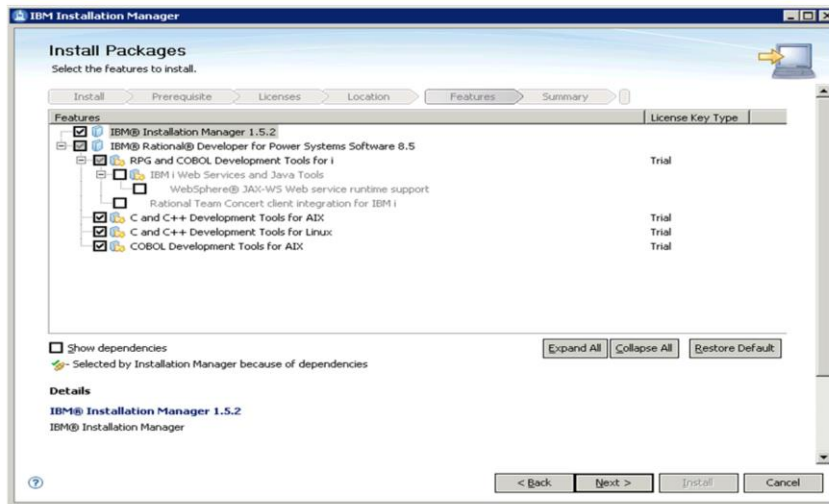
- Select which translations to install
  - English is always installed.



Select which translation to install. English is always installed. Click Next to continue.

## Features

- Select which features to install
  - IBM i Web Services and Java Tools related features, and Rational Team Concert™ client integration are not available if the product is not being installed into an existing package group that already has the required prerequisites

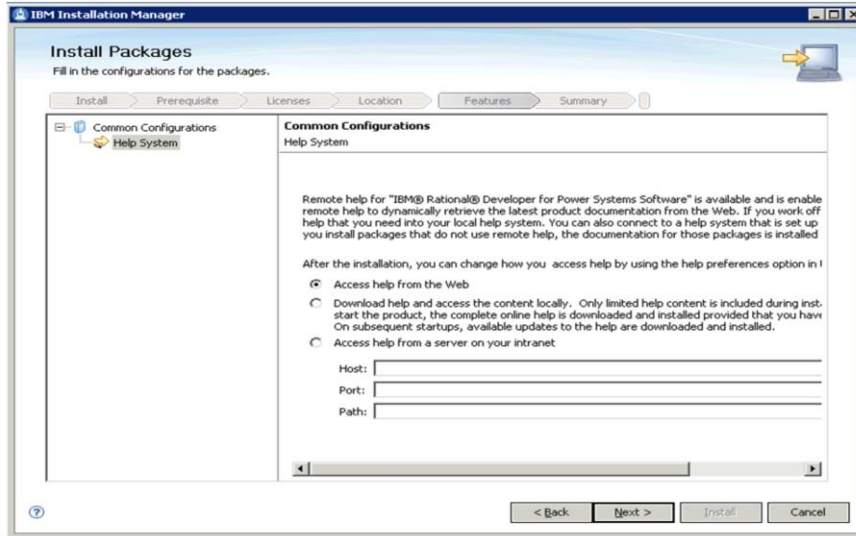


© 2012 IBM Corporation

In the product there are several features. You can choose which features to install. When you click a feature, a description of the feature is displayed in the Details area. The IBM i Web Services and Java Tools related features, and the Rational Team Concert client integration feature are not available if the product is not being installed into an existing package group that already has the required prerequisites. The installation guide lists which other products provide the specific prerequisites. Click Next to continue.

## Installation (1 of 3)

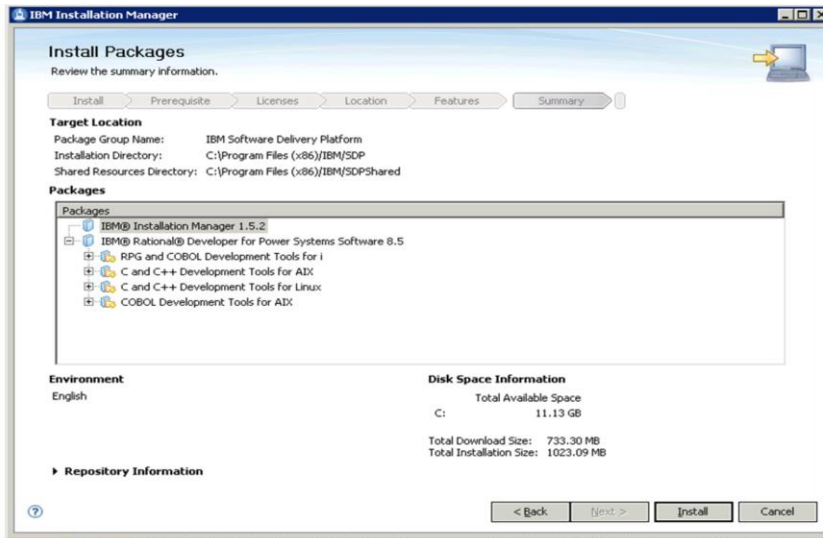
- Choose help system access option



Help system access options are shown. Choose “Access help from the web” if your machine has an Internet connection. This provides the latest updates. Otherwise choose “Download the help to your local machine” or “Access help from a server on your intranet.” Click Next to continue.

## Installation (2 of 3)

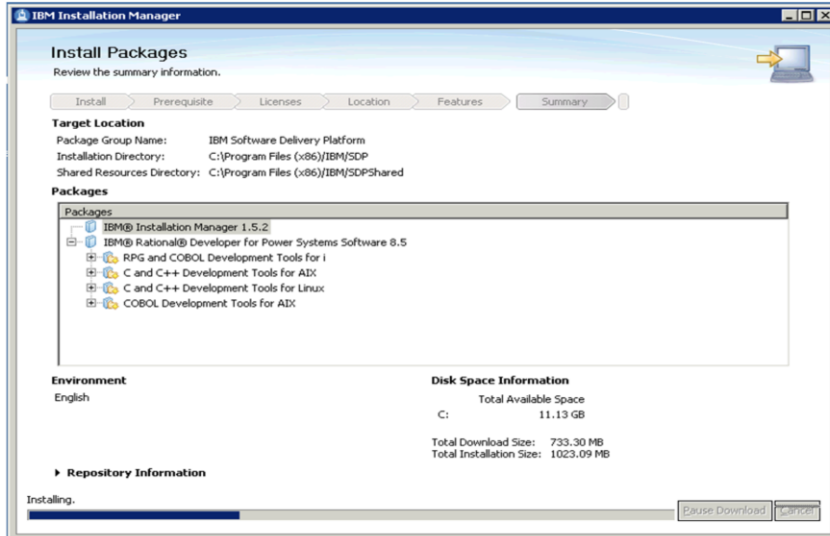
- Summary is shown and you can start the installation.



A summary of your selections is displayed before the actual installation occurs. If you want to make any changes, use the Back button. Click Install to continue.

## Installation (3 of 3)

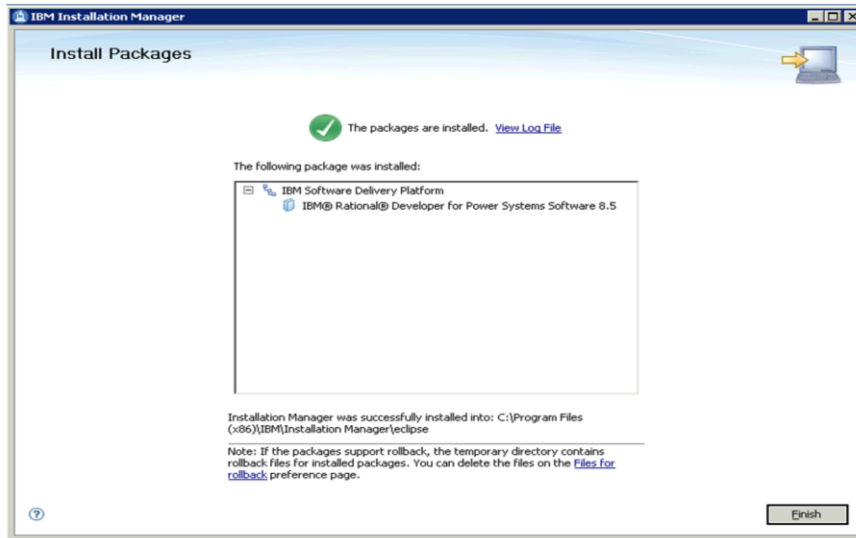
- Installation progress is shown along the bottom of the window.



The progress of the installation is shown at the bottom of the window.

## Completed

- When the installation is completed, you can view the log file

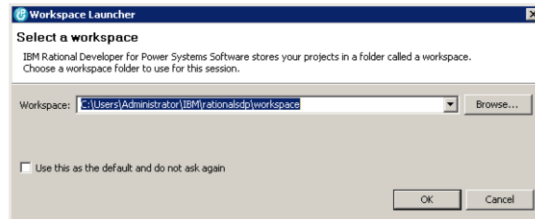


© 2012 IBM Corporation

When the installation is completed, you can view the log file. Click Finish to complete the installation.

## Start the product

- From the Start menu, select:
  - Programs > IBM Software Delivery Platform > IBM Rational Developer for Power Systems Software V8.5 > IBM Rational Developer for Power Systems Software
- You are prompted to specify a workspace to use.



With the product installed, use the Start menu item to launch the product. You are prompted to specify a workspace, which is a folder that stores your projects.



## Trademarks, disclaimer, and copyright information

THE INFORMATION CONTAINED IN THIS PRESENTATION IS PROVIDED FOR INFORMATIONAL PURPOSES ONLY. Other product and service names might be trademarks of IBM or other companies. A current list of other IBM trademarks is available on the web at "[Copyright and trademark information](http://www.ibm.com/legal/copytrade.shtml)" at <http://www.ibm.com/legal/copytrade.shtml>

Linux is a registered trademark of Linus Torvalds in the United States, other countries, or both.

Windows, and the Windows logo are registered trademarks of Microsoft Corporation in the United States, other countries, or both.

Other company, product, or service names may be trademarks or service marks of others.

THE INFORMATION CONTAINED IN THIS PRESENTATION IS PROVIDED FOR INFORMATIONAL PURPOSES ONLY. WHILE EFFORTS WERE MADE TO VERIFY THE COMPLETENESS AND ACCURACY OF THE INFORMATION CONTAINED IN THIS PRESENTATION, IT IS PROVIDED "AS IS" WITHOUT WARRANTY OF ANY KIND, EXPRESS OR IMPLIED. IN ADDITION, THIS INFORMATION IS BASED ON IBM'S CURRENT PRODUCT PLANS AND STRATEGY, WHICH ARE SUBJECT TO CHANGE BY IBM WITHOUT NOTICE. IBM SHALL NOT BE RESPONSIBLE FOR ANY DAMAGES ARISING OUT OF THE USE OF, OR OTHERWISE RELATED TO, THIS PRESENTATION OR ANY OTHER DOCUMENTATION. NOTHING CONTAINED IN THIS PRESENTATION IS INTENDED TO, NOR SHALL HAVE THE EFFECT OF, CREATING ANY WARRANTIES OR REPRESENTATIONS FROM IBM (OR ITS SUPPLIERS OR LICENSORS), OR ALTERING THE TERMS AND CONDITIONS OF ANY AGREEMENT OR LICENSE GOVERNING THE USE OF IBM PRODUCTS OR SOFTWARE.

© Copyright International Business Machines Corporation 2012. All rights reserved.