



IBM Software Group | Rational software

IBM® Rational® ClearCase® and ClearQuest® Evaluation Guide

Module 5: Release Engineer role



@business on demand.

© 2006 IBM Corporation

Role: Release Engineer

- You will now take on the final role of this tutorial – the release engineer.
- In this section you will learn how to:
 - Recommend the baseline
 - Fetching the baseline
 - Rebasing your stream
 - Confirming the recommended baseline



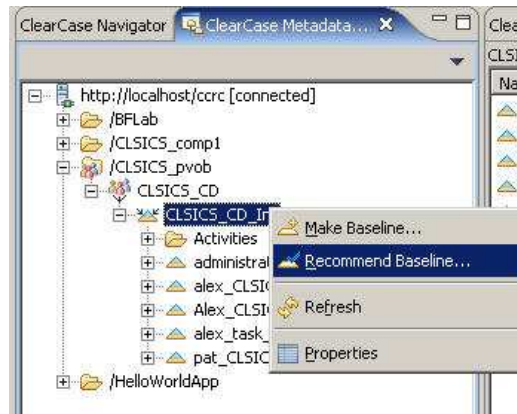
Recommending the latest baseline

- Update your development stream so that you are working with the latest version of your application
- Minimize the chance that any new work you perform will conflict with activities already delivered to the Integration stream
- Update your team members with the latest changes from the integration stream

Now that there is a new baseline, you would like to update your development stream so that you are working with the latest version of your application. This will minimize the chance that any new work you perform will conflict with activities already delivered to the Integration stream. You also want other members of your team to be up to date with the latest changes from the integration stream.

Recommended baseline

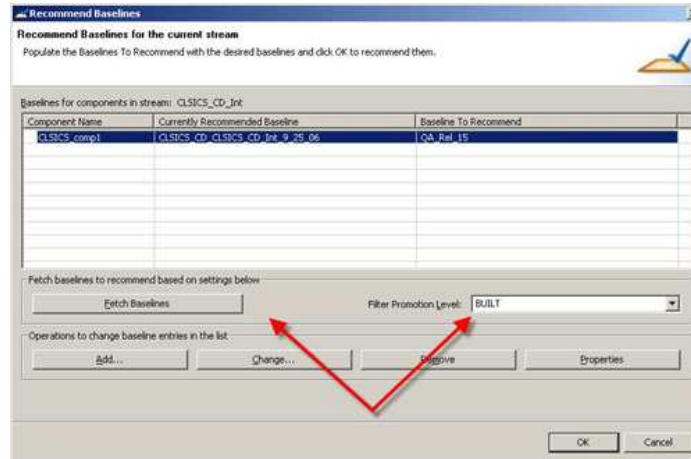
- Before you build the software to be released, you need to be sure that the workspace is current with the latest, recommended baseline



Before you build the software to be released, you need to be sure that the workspace is current with the latest, recommended baseline.

Fetching the baseline

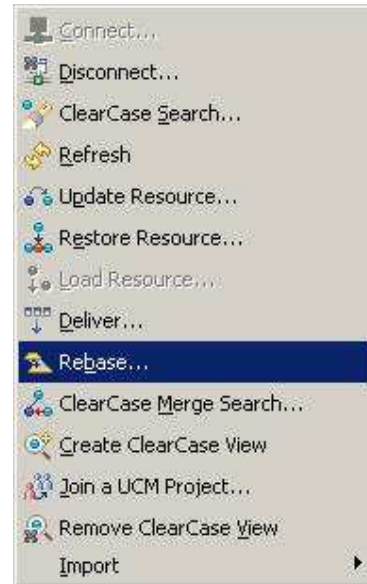
- Under **Filter Promotion Level**, select **BUILT** from the pull-down menu and click the **Fetch Baselines** button



Under **Filter Promotion Level**, select **BUILT** from the pull-down menu and click the **Fetch Baselines** button

Rebasing your stream

- From the new view you created for the release engineer
- Select **Rebase** from this **ClearCase** menu
- Once complete, an **Advanced** button will allow you to confirm that you are rebasing the newly recommended baseline.
- In this case, all of these merges are completed automatically and you choose to Complete the Rebase operation. You now have a stable configuration in your workspace that you can build and release to production.



Now that you have a "built" baseline that is *recommended*, you want to rebase your stream to get those changes in your workspace. From the new view you created for the release engineer:

Select **Rebase** from this **ClearCase** menu

Once complete, an **Advanced** button will allow you to confirm that you are rebasing the newly recommended baseline.

In this case, all of these merges are completed automatically and you choose to Complete the Rebase operation. You now have a stable configuration in your workspace that you can build and release to production.

Much like the deliver operation, ClearCase identifies changes in the latest baseline that are not visible in your view, and performs merges where needed.

Click on the new view you created for Chris. From the **ClearCase** menu, select **Rebase**.

Summary for Release Engineer role

- In summary, the Release Engineer can:
 - Recommend the baseline
 - Fetch the baseline
 - Rebase the stream
 - Confirm the recommended baseline

In summary, the Release Engineer:

Recommends the baseline

Fetches the baseline

Rebases your stream

Confirms the recommended baseline

Trademarks, copyrights and disclaimers



The following terms are trademarks or registered trademarks of International Business Machines Corporation in the United States, other countries, or both:

IBM	CICS	IMS	MQSeries	Tivoli
IBM (logo)	Cloudscape	Informix	OS/390	WebSphere
e[logo]business	DB2	iSeries	OS/400	xSeries
AIX	DB2 Universal Database	Lotus	pSeries	zSeries

Java and all Java-based trademarks are trademarks of Sun Microsystems, Inc. in the United States, other countries, or both.

Microsoft, Windows, Windows NT, and the Windows logo are registered trademarks of Microsoft Corporation in the United States, other countries, or both.

Intel, ActionMedia, LANDesk, MMX, Pentium and ProShare are trademarks of Intel Corporation in the United States, other countries, or both.

UNIX is a registered trademark of The Open Group in the United States and other countries.

Linux is a registered trademark of Linus Torvalds.

Other company, product and service names may be trademarks or service marks of others.

Product data has been reviewed for accuracy as of the date of initial publication. Product data is subject to change without notice. This document could include technical inaccuracies or typographical errors. IBM may make improvements and/or changes in the product(s) and/or program(s) described herein at any time without notice. Any statements regarding IBM's future direction and intent are subject to change or withdrawal without notice, and represent goals and objectives only. References in this document to IBM products, programs, or services does not imply that IBM intends to make such products, programs or services available in all countries in which IBM operates or does business. Any reference to an IBM Program Product in this document is not intended to state or imply that only that program product may be used. Any functionally equivalent program, that does not infringe IBM's intellectual property rights, may be used instead.

Information is provided "AS IS" without warranty of any kind. THE INFORMATION PROVIDED IN THIS DOCUMENT IS DISTRIBUTED "AS IS" WITHOUT ANY WARRANTY, EITHER EXPRESS OR IMPLIED. IBM EXPRESSLY DISCLAIMS ANY WARRANTIES OF MERCHANTABILITY, FITNESS FOR A PARTICULAR PURPOSE OR NONINFRINGEMENT. IBM shall have no responsibility to update this information. IBM products are warranted, if at all, according to the terms and conditions of the agreements (e.g., IBM Customer Agreement, Statement of Limited Warranty, International Program License Agreement, etc.) under which they are provided. Information concerning non-IBM products was obtained from the suppliers of those products, their published announcements or other publicly available sources. IBM has not tested those products in connection with this publication and cannot confirm the accuracy of performance, compatibility or any other claims related to non-IBM products. IBM makes no representations or warranties, express or implied, regarding non-IBM products and services.

The provision of the information contained herein is not intended to, and does not, grant any right or license under any IBM patents or copyrights. Inquiries regarding patent or copyright licenses should be made, in writing, to:

IBM Director of Licensing
IBM Corporation
North Castle Drive
Armonk, NY 10504-1785
U.S.A.

Performance is based on measurements and projections using standard IBM benchmarks in a controlled environment. All customer examples described are presented as illustrations of how those customers have used IBM products and the results they may have achieved. The actual throughput or performance that any user will experience will vary depending upon considerations such as the amount of multiprogramming in the user's job stream, the I/O configuration, the storage configuration, and the workload processed. Therefore, no assurance can be given that an individual user will achieve throughput or performance improvements equivalent to the ratios stated here.

© Copyright International Business Machines Corporation 2005,2006. All rights reserved.

Note to U.S. Government Users - Documentation related to restricted rights-Use, duplication or disclosure is subject to restrictions set forth in GSA ADP Schedule Contract and IBM Corp.

