

This presentation covers the Project Lead role in IBM Rational ClearCase and ClearQuest.

## Role: Project lead

---

- The project is broken down into multiple components. Within those components are different required tasks.
- The basic tasks for this role include:
  - Logging on to the ClearQuest client
  - Running a query and viewing a distribution chart
  - Modifying a record and assigning a new owner for a defect

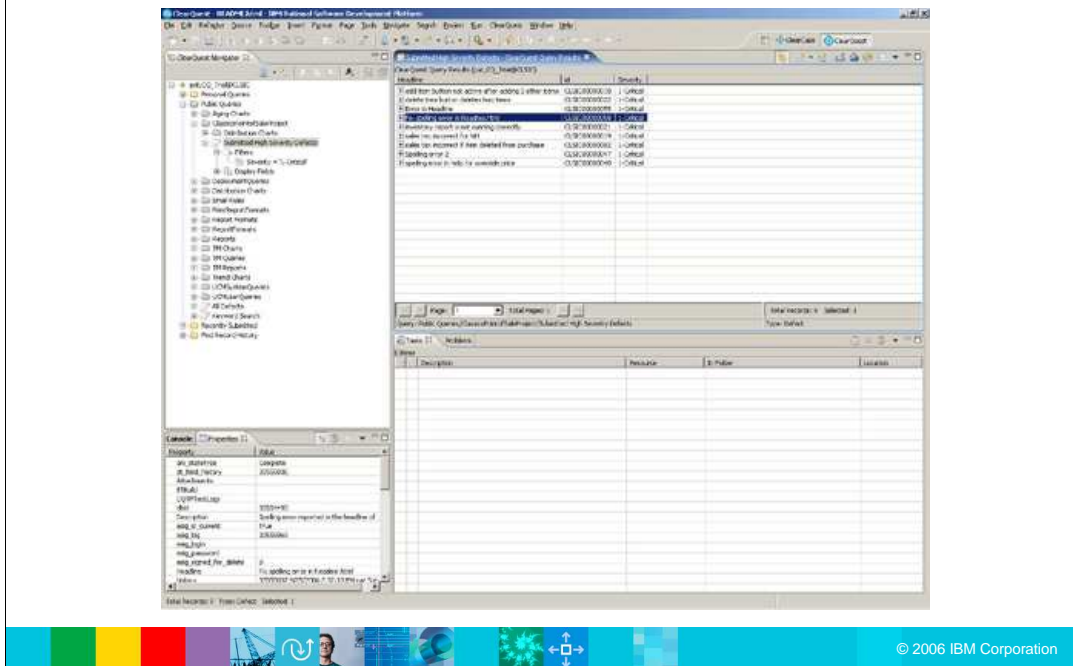
You will begin this evaluation in the role of the Project Lead, responsible for organizing the project and breaking it down into multiple components. Within those components are different required tasks. The basic tasks for this role include:

Logging on to the ClearQuest client

Running a query and viewing a distribution chart and

Modifying a record and assigning a new owner for a defect

## The ClearQuest navigator



After logging into ClearQuest, the navigator window appears. On the left side, there is a menu of different queries available.

You can use one of these or create your own custom queries to fit your needs.

In the navigation pane, notice that **Submitted High Severity Defects** has been expanded. These are the defects that have been submitted but not yet opened by Engineering.

In the right, or, **ClearQuest Query Results** pane, information associated with these defects is listed. You can see that the defect report with the headline: **Fix spelling error in README.html** has yet to be assigned; that is, it is still in the **Submitted** state.

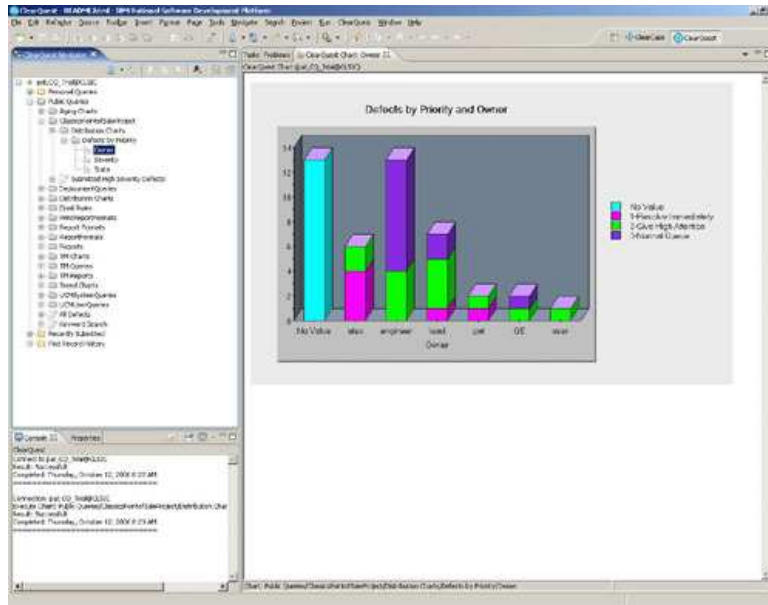
## Bug triage

- Run saved queries to quickly identify which change requests or defects need immediate attention
- Distribution charts that help you identify the workloads of your engineers
- Assign bug defects to those that have the cycles to resolve them

Performing bug triage has never been easier! By running saved queries, you can quickly identify which change requests or defects need immediate attention.

By looking at distribution charts, you can identify the workloads of your engineers and assign the defects to those that have the time and resources to resolve them.

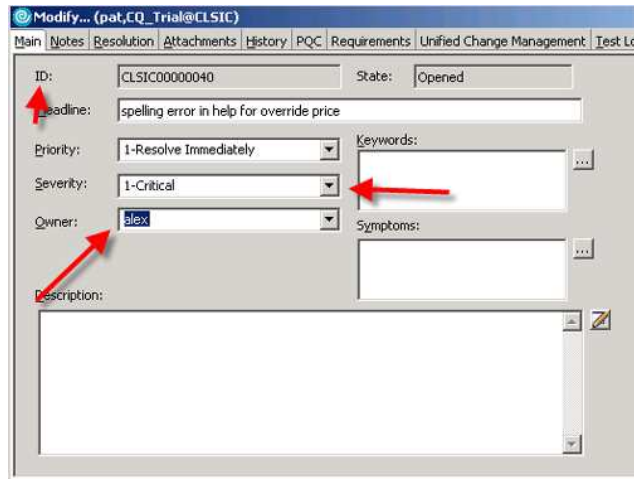
## Chart of defects by priority by owner



In the Defects by Priority and Owner view, you can easily drill down to view activities for your team members. For instance, team member Alex (the second bar to the left) has only a few activities that are in the **Opened** or **Assigned** state, so you can assign this defect to Alex.

## Modifying a record: Assign a new owner

- Modify the record and set the appropriate fields on the change request form

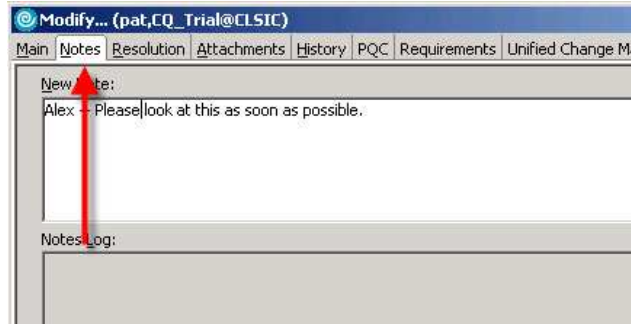


Now that you have identified a developer to be the owner of the defect, you can modify the record and set the appropriate fields on the change request form on the main tab.

All of the fields on a Rational ClearQuest form are completely customizable. You can run the **Assign** action and enter the appropriate team member as the **Owner**.

You also set the Priority field and enter a note saying to further explain the change request. Once you have recorded all this information, you click **Apply** to update the record.

## Modify (record) dialog box - Notes tab



By clicking on the **Notes** tab, you can then enter some meaningful text for the new owner. Once complete, you can Apply the changes. You can now re-run the Defects by Priority > Owner chart and confirm that Alex now has ownership of the Submitted defect that you just modified.

## ClearQuest hooks

- Set hooks to fire when an action is performed
  - e-mail notification hook
  - Set e-mail rules
  - Generate automatic notification on changes
- Audit Trails
  - Meet regulatory compliance requirements
  - ClearQuest keeps a record of every action
  - Information kept for the life of the defect

ClearQuest hooks can fire when an action is performed. One very important hook is the e-mail notification hook. In this example, once the *Modify* action is complete, the notification hook could run any *e-mail Rules* associated with the change request. For example, you may want the e-mail rules set to watch for changes made to the *Owner* field and when the value changes, automatically generate and send e-mail to the new owner, informing them of the change.

To meet regulatory compliance requirements, ClearQuest keeps a record of every action performed on a defect. The audit trail tab automatically keeps this information for the entire life of the defect.



## Summary for project lead role

- In summary, the Project Lead can:
  - Assess the project status and progress through standard and customized queries and charts
  - Effectively allocate change requests to engineering resources
  - Use customizable solutions or hooks to assign change requests and automatically communicate project status to the team

In summary, in this section you have seen how the Project Lead can:

Assess the project status and progress through standard and customized queries and charts.

Effectively allocate change requests to engineering resources.

Use customizable solutions or hooks to assign change requests and automatically communicate project status to the team

## Trademarks, copyrights and disclaimers

The following terms are trademarks or registered trademarks of International Business Machines Corporation in the United States, other countries, or both:

IBM	CICS	IMS	MQSeries	Tivoli
IBM (logo)	Cloudscape	Informix	OS/390	WebSphere
e (logo)/business	DB2	iSeries	OS/400	xSeries
AIX	DB2 Universal Database	Lotus	pSeries	zSeries

Java and all Java-based trademarks are trademarks of Sun Microsystems, Inc. in the United States, other countries, or both.

Microsoft, Windows, Windows NT, and the Windows logo are registered trademarks of Microsoft Corporation in the United States, other countries, or both.

Intel, ActionMedia, LANDesk, MMX, Pentium and ProShare are trademarks of Intel Corporation in the United States, other countries, or both.

UNIX is a registered trademark of The Open Group in the United States and other countries.

Linux is a registered trademark of Linus Torvalds.

Other company, product and service names may be trademarks or service marks of others.

Product data has been reviewed for accuracy as of the date of initial publication. Product data is subject to change without notice. This document could include technical inaccuracies or typographical errors. IBM may make improvements and/or changes in the product(s) and/or program(s) described herein at any time without notice. Any statements regarding IBM's future direction and intent are subject to change or withdrawal without notice, and represent goals and objectives only. References in this document to IBM products, programs, or services does not imply that IBM intends to make such products, programs or services available in all countries in which IBM operates or does business. Any reference to an IBM Program Product in this document is not intended to state or imply that only that program product may be used. Any functionally equivalent program, that does not infringe IBM's intellectual property rights, may be used instead.

Information is provided "AS IS" without warranty of any kind. THE INFORMATION PROVIDED IN THIS DOCUMENT IS DISTRIBUTED "AS IS" WITHOUT ANY WARRANTY, EITHER EXPRESS OR IMPLIED. IBM EXPRESSLY DISCLAIMS ANY WARRANTIES OF MERCHANTABILITY, FITNESS FOR A PARTICULAR PURPOSE OR NONINFRINGEMENT. IBM shall have no responsibility to update this information. IBM products are warranted, if at all, according to the terms and conditions of the agreements (e.g., IBM Customer Agreement, Statement of Limited Warranty, International Program License Agreement, etc.) under which they are provided. Information concerning non-IBM products was obtained from the suppliers of those products, their published announcements or other publicly available sources. IBM has not tested those products in connection with this publication and cannot confirm the accuracy of performance, compatibility or any other claims related to non-IBM products. IBM makes no representations or warranties, express or implied, regarding non-IBM products and services.

The provision of the information contained herein is not intended to, and does not, grant any right or license under any IBM patents or copyrights. Inquiries regarding patent or copyright licenses should be made, in writing, to:  
 IBM Director of Licensing  
 IBM Corporation  
 North Castle Drive  
 Armonk, NY 10504-1785  
 U.S.A.

Performance is based on measurements and projections using standard IBM benchmarks in a controlled environment. All customer examples described are presented as illustrations of how those customers have used IBM products and the results they may have achieved. The actual throughput or performance that any user will experience will vary depending upon considerations such as the amount of multiprogramming in the user's job stream, the I/O configuration, the storage configuration, and the workload processed. Therefore, no assurance can be given that an individual user will achieve throughput or performance improvements equivalent to the ratios stated here.

© Copyright International Business Machines Corporation 2006. All rights reserved.

Note to U.S. Government Users - Documentation related to restricted rights-Use, duplication or disclosure is subject to restrictions set forth in GSA ADP Schedule Contract and IBM Corp.

