



IBM Software Group | Rational software

IBM Rational® Integrations

Configuring Test Manager for UCM source control

Rational software



@business on demand.

© 2009 IBM Corporation

Updated June 11, 2009

This module will cover how to configure IBM Rational TestManager for UCM Source Control for versions 2003.06 and higher.

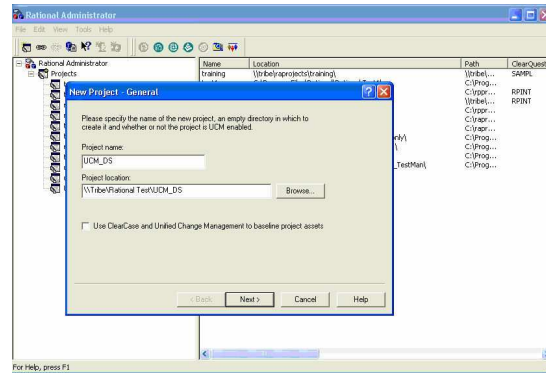
Module objectives

- The following topics are covered in this module:
 - ▶ Creating a Microsoft® Access® test data store
 - ▶ Creating a UCM single Stream project
 - ▶ Step by step process to configure the integration
 - ▶ Best practices

This module will cover the steps to completely configure the integration between IBM Rational Test Manager and IBM Rational ClearCase® using UCM. You will walk you through the process of creating a Test Data store using a sample Microsoft Access backend database, creating a UCM single stream project, and the process of configuring the integration between the two.

Topic one: Creation of test data store

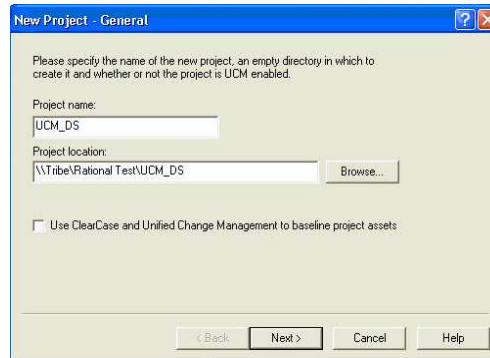
- Backend is Microsoft Access
- Use Rational Administrator to create Test Data store
- Initial Test Data store is located outside of UCM Source Control.



The first step in this process involves creating the Test Data store that you will eventually add to UCM source control. In this example use Microsoft Access as the backend database. To create the Test Data store, you should already have Rational Administrator installed on your workstation.

Creating the Rational Administrator project

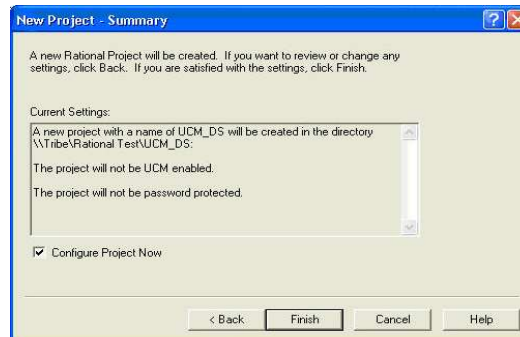
- Open Rational Administrator and create a new project
- Create a unique project name
- Enter Project Location in UNC format
- Do not select “Use ClearCase...” tab, click “next”



Open Rational Administrator and select “file” then “new project” to create a new Rational Administrator project. Enter a new, unique project name and give that project a location. This location should be in UNC format and should be located on a share that is accessible by all users. Also note the box that says “User ClearCase and Unified Change Management to baseline project assets.” Although this is what you will eventually be doing, do NOT check this box at this time. You are going to create the Test Data store outside of UCM first, then eventually move the Data store to a location within a UCM VOB and place it under source control.

Creating a Rational Administrator project (continued)

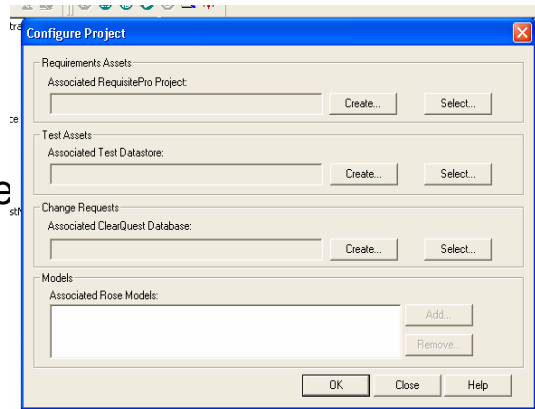
- Leave “password” and “confirm” boxes empty, click “next”
- Check “Configure Project Now”, click “finish”



After clicking “next” you are brought to the “Password and Confirm” page. For the example here, you will leave these entries blank. If your environment, however, makes it necessary to fill this in then you will need to enter those values here. Click next and you are brought to the summary page. It will show you the new project name in addition to the UNC location. You should also note that this project is not yet UCM enabled at this time. The selection to password protect the project should also be shown here. At this point, you will want to select “Configure Project Now” and select “finish.”

Setup the test data store outside of UCM

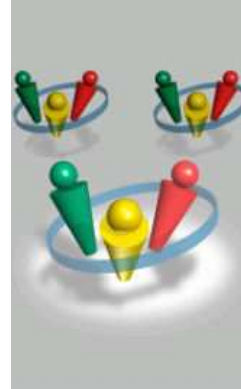
- Click the “create” button next to Test Data store field
- Select Microsoft® Access Data store type
- Use default path
- Click finish



Since you have selected “configure project now” from the last step, this will display the Rational Administrator “configure project” wizard which is shown on this slide. The “test assets” section is the one you are interested in working with here. Note the “create” button next to the “Associated Test Data store” field. Click this button which will display the wizard and prompt you for the type of backend database you want to create. You will create an Microsoft Access data store for this example. Click “next.” You now need to enter a new data store path. Leave the default path in place. This should be the same path that you entered from the last slide, and it is not yet in a location that would place it under UCM source control. Click “next” to continue. For initialization options, leave the fields blank and click Finish. The tool will now create and configure your Test Data store outside of UCM source control.

Topic two – Create a single stream UCM project

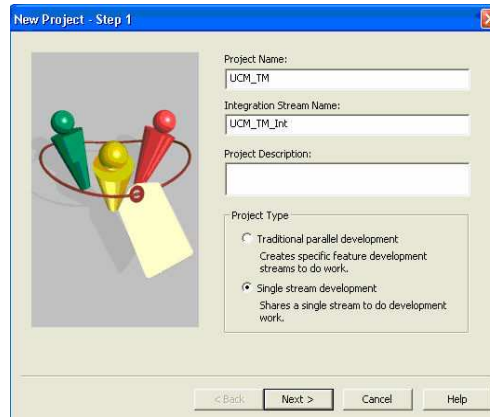
- Must be a single stream project
- No support for parallel stream development for this integration
- Shared Snapshot view only



The second topic in this module covers the second half of this Integration – ClearCase UCM. For this example you are going to create a new single stream UCM project with one shared snapshot view. You can use an existing UCM project if you have one, but keep in mind that this integration only supports single stream UCM projects and a single shared snapshot view for all users on a UNC path. There is no support for parallel development with this integration at this time.

Creating the project

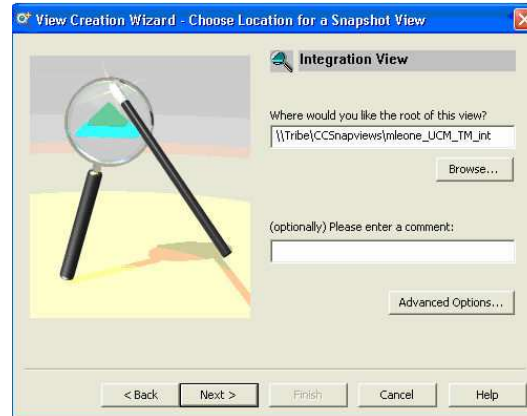
- Create or reuse an existing PVOB
- Create or reuse an existing Component VOB – an either be a VOB level component or subvob component
- Create a Single-Stream UCM Project



For this example you will create a new PVOB and component VOB. Once you have the VOBs created, make sure you componentize the component VOB (or subvob directory – the choice is yours) under the new UCM PVOB. Using the Project Explorer new project wizard, create your new single stream UCM project, selecting your new component as the modifiable component within this new project. Again, the component can either be a VOB-level component or a subvob component depending on the required configuration of your environment.

Creating the view

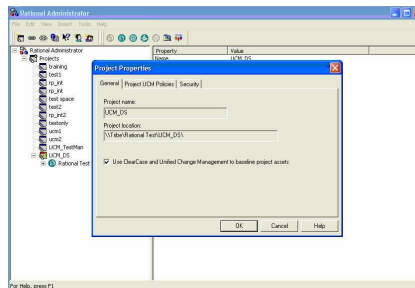
- Create a view for Integration Stream
- View must be snapshot
- Must be located in a UNC-style shared directory



Once the new single stream project is created and configured properly with your new component selected to be modifiable, right click your integration stream within Project Explorer and select "create view" to start the view creation wizard. This step is important. As discussed earlier, the view for this integration must be a shared snapshot view located on a UNC style share that is accessible with full permissions to all users who are developing within this integration. Once you have the correct UNC path for the new view, you can continue with view creation.

Topic 3: Adding a test data store to UCM

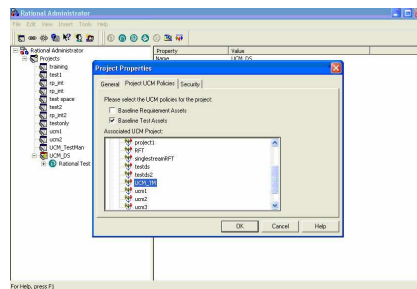
- Open Rational Administrator and connect to new project
- Open the Project's Properties window
- Select "Use ClearCase and Unified Change Management to baseline project assets"



The third and final topic in this module will cover the actual integration of Test Manager and ClearCase by placing the Test data store under UCM source control. You will start by opening Rational Administrator and connecting to your new project. To connect, right click the project within the left pane and select "connect." Once connected, right click the same project and select "properties." This will call up the project's properties window with three tabs. On the general tab, check "use ClearCase and Unified Change Management to baseline project assets" then select the "Project UCM Policies" tab.

Selecting policies

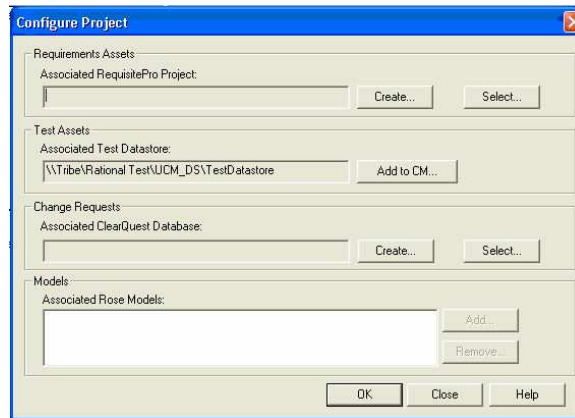
- Select Policies tab
- Check the 'Baseline Test Assets' check box
- Select the UCM project that was created in the previous topic, then click “OK”



Under the “Project UCM Policies” tab, make sure that “Baseline Test Assets” is checked since one of the points of this integration is to be able to baseline new iterations of assets as they are checked in. Once you check that box you will need to select the UCM Project that was created in topic two of this module. Then click “okay.”

Adding to change management

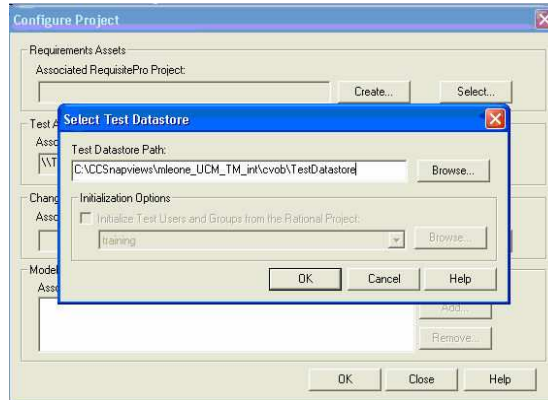
- Right-click the Rational Administrator project
- Select Configure
- Click 'Add to CM' button next to the Test Data store



Now you will find yourself back in the Rational Administrator GUI. From here, right click again on your new Rational Administrator Project and select “configure.” This will bring up the configuration wizard for this project again. You should now see an “add to CM” button next to the “Associated Test Data store” field. At this time, go ahead and click this button.

Setting the path under CM

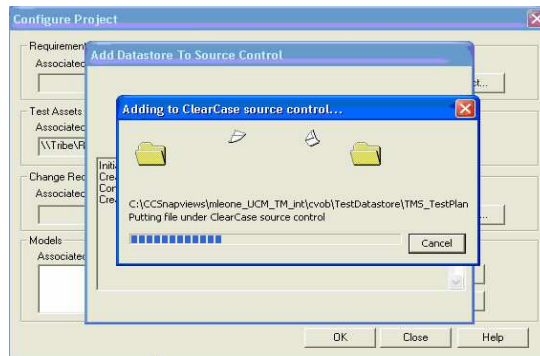
- Path for Test Data store is UNC style
- Format is \\server\share\view\view\ob\TestDatastore
- Test Data store folder can also be located in subfolder of the VOB



Once you click “add to CM” it will bring up the selection window. The new Test Data store path that you want to enter is the path through the single stream snapshot view, component VOB, and the optional subvob folder (of componentized). The new directory you are creating is called “TestDatastore.” Once you have the correct path you can click “okay.” This will begin the process of adding the Test Data store to UCM and will also checkout everything within that directory.

Adding to change management (continued)

- Clicking okay will begin process of adding to Source Control



You will note that the process will take at least several minutes while all files within the Test Data store folder are put under UCM source control. Do not interrupt this process while it is taking place.

Success!

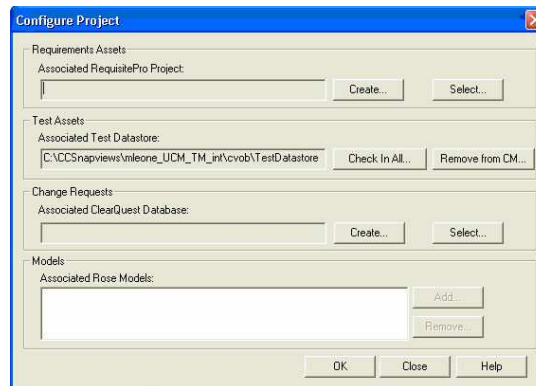
- Once process is complete, message will appear...



Once the Test Data store and all of its contents are added to UCM source control, you will see a message stating that the Data store has been successfully added to CM. At this point you can click "ok."

Ready for development

- Right click Project, select configure
- Project now under UCM source control
- Ability to check in all, create baselines



Development of test assets can now take place under UCM source control using your shared snapshot view. When you right click your new project in Rational Administrator and select “configure” you should now see a button next to the Associated Test Data store which reads “checkin-all.” You will use this function when it is time to add new assets to source control and create UCM baselines.

Module summary

- How to create a test data store
- How to create a single stream UCM project
- How to add test data store to UCM
- How to baseline test assets

In this module, you have learned how to create an IBM Rational Test Data store, a UCM single Stream Project, and how to integrate the two together to allow your Project's Test Assets to be baselined under UCM source control. At this stage, you are able to configure and implement this type of integration into your environment.

Feedback

Your feedback is valuable

You can help improve the quality of IBM Education Assistant content to better meet your needs by providing feedback.

- Did you find this module useful?
- Did it help you solve a problem or answer a question?
- Do you have suggestions for improvements?

Click to send e-mail feedback:

mailto:iea@us.ibm.com?subject=Feedback_about_UCMTM.ppt

This module is also available in PDF format at: [../UCMTM.pdf](..../UCMTM.pdf)



You can help improve the quality of IBM Education Assistant content by providing feedback. Did you find this module useful? Did it help you solve a problem or answer a question?

Do you have suggestions for any improvements? Click the link on this slide to send e-mail feedback.



Trademarks, copyrights, and disclaimers

IBM, the IBM logo, ibm.com, and the following terms are trademarks or registered trademarks of International Business Machines Corporation in the United States, other countries, or both:
ClearCase Rational

If these and other IBM trademarked terms are marked on their first occurrence in this information with a trademark symbol (® or ™), these symbols indicate U.S. registered or common law trademarks owned by IBM at the time this information was published. Such trademarks may also be registered or common law trademarks in other countries. A current list of other IBM trademarks is available on the Web at "Copyright and trademark information" at <http://www.ibm.com/legal/copytrade.shtml>

Rational is a trademark of International Business Machines Corporation and Rational Software Corporation in the United States, Other Countries, or both.

Access, Microsoft, and the Windows logo are registered trademarks of Microsoft Corporation in the United States, other countries, or both.

Other company, product, or service names may be trademarks or service marks of others. Product data has been reviewed for accuracy as of the date of initial publication. Product data is subject to change without notice. This document could include technical inaccuracies or typographical errors. IBM may make improvements or changes in the products or programs described herein at any time without notice. Any statements regarding IBM's future direction and intent are subject to change or withdrawal without notice, and represent goals and objectives only. References in this document to IBM products, programs, or services does not imply that IBM intends to make such products, programs or services available in all countries in which IBM operates or does business. Any reference to an IBM Program Product in this document is not intended to state or imply that only that program product may be used. Any functionally equivalent program, that does not infringe IBM's intellectual property rights, may be used instead.

THE INFORMATION PROVIDED IN THIS DOCUMENT IS DISTRIBUTED "AS IS" WITHOUT ANY WARRANTY, EITHER EXPRESS OR IMPLIED. IBM EXPRESSLY DISCLAIMS ANY WARRANTIES OF MERCHANTABILITY, FITNESS FOR A PARTICULAR PURPOSE OR NONINFRINGEMENT. IBM shall have no responsibility to update this information. IBM products are warranted, if at all, according to the terms and conditions of the agreements (for example, IBM Customer Agreement, Statement of Limited Warranty, International Program License Agreement, etc.) under which they are provided. Information concerning non-IBM products was obtained from the suppliers of those products, their published announcements or other publicly available sources. IBM has not tested those products in connection with this publication and cannot confirm the accuracy of performance, compatibility or any other claims related to non-IBM products.

IBM makes no representations or warranties, express or implied, regarding non-IBM products and services.

The provision of the information contained herein is not intended to, and does not, grant any right or license under any IBM patents or copyrights. Inquiries regarding patent or copyright licenses should be made, in writing, to:

IBM Director of Licensing
IBM Corporation
North Castle Drive
Armonk, NY 10504-1785
U.S.A.

Performance is based on measurements and projections using standard IBM benchmarks in a controlled environment. All customer examples described are presented as illustrations of how those customers have used IBM products and the results they may have achieved. The actual throughput or performance that any user will experience will vary depending upon considerations such as the amount of multiprogramming in the user's job stream, the I/O configuration, the storage configuration, and the workload processed. Therefore, no assurance can be given that an individual user will achieve throughput or performance improvements equivalent to the ratios stated here.

© Copyright International Business Machines Corporation 2009. All rights reserved.

Note to U.S. Government Users - Documentation related to restricted rights-Use, duplication or disclosure is subject to restrictions set forth in GSA ADP Schedule Contract and IBM Corp.