



# IBM Education Assistant

**IBM Rational ClearCase™ (version 7.x)  
Unified Change Management™**

**Exercise 4: Adding a Component to a  
Project**

**Rational.** software



© Copyright International Business Machines Corporation 2005, 2006, 2007. All rights reserved. Note to U.S. Government Users Restricted Rights -- Use, duplication or disclosure restricted by GSA ADP. Schedule Contract with IBM Corp.

Contributors: Marcus Matic, Alex Grillakis, and Will Frontiero

**Rational** software



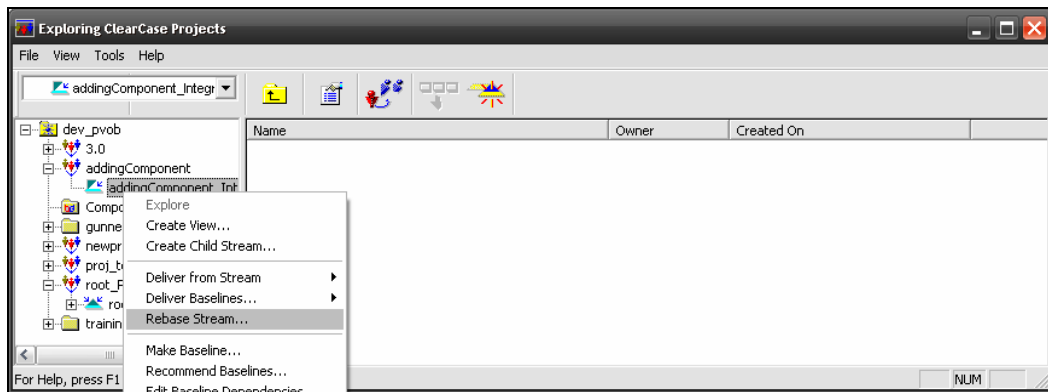
## Exercise 4: Adding a Component to a Project

### Add a Component

To add a component to a project you will need to *rebase* the projects Integration stream with the desired Component foundation Baseline. Once the component has been added to the Integration streams foundation it will be available to the project.

### Rebase a Project

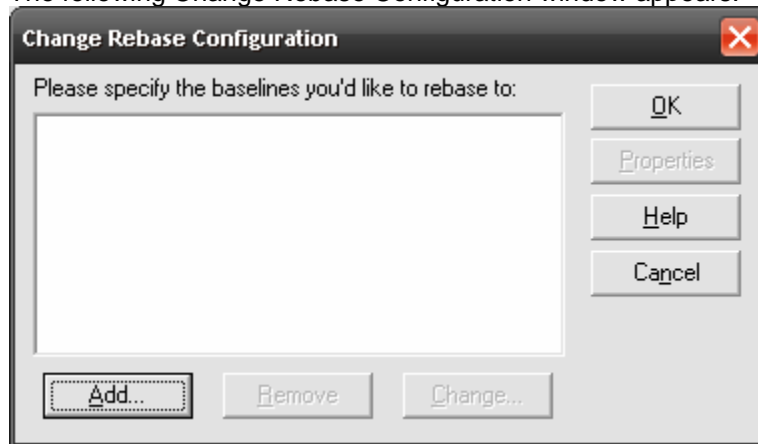
1. To Rebase a Project from the GUI:
  - Open the **Project Explorer**
  - Expand the project (dev\_pvob) to reveal the integration stream (addingComponent)
  - Right-click on the integration stream
  - Select **Rebase Stream**



From the Rebase Stream Preview window, you can rebase the integration streams to a specific baseline, merge work into a view, merge elements graphically, and view a list of completed work included in the baseline.



2. Select the desired baselines to use
  - Click the **Advanced** button to select the desired baselines to make available to project:
  - The following Change Rebase Configuration window appears:

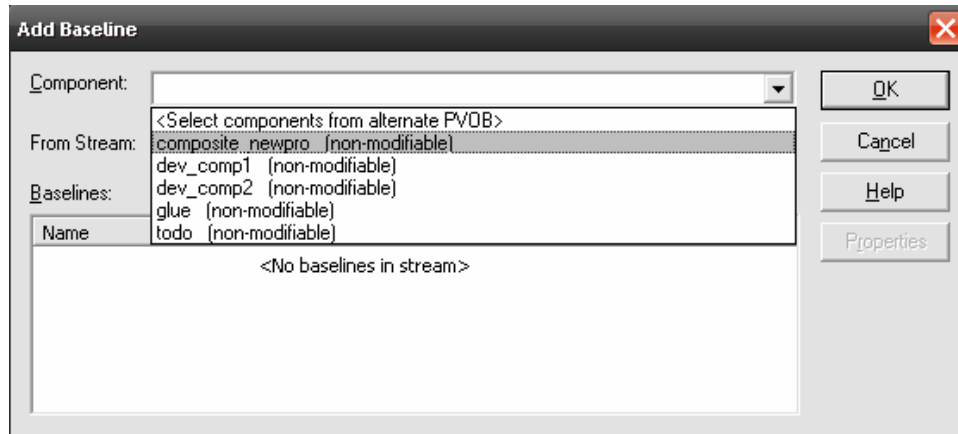


- Click the **Add** button to select the desired Component Baseline to add to the project



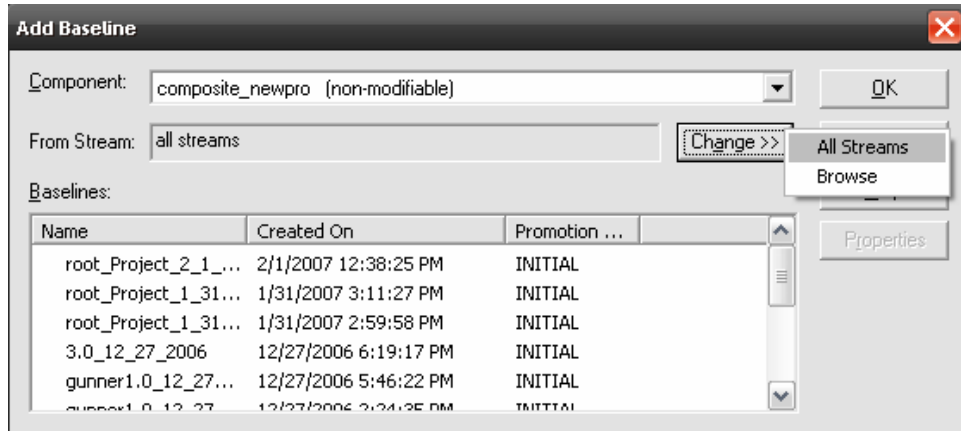
### 3. Choose the baselines

- Click the dropdown menu to select a Component
- In this example, we select the **composite\_newpro** component

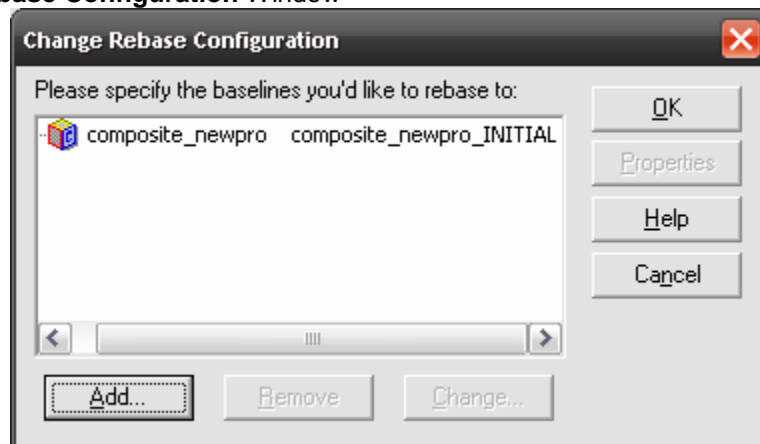


- **Note:** all components are *non-modifiable* since modification of a component is set once it is available to the project (until the Project Policy is set to make them modifiable)

4. Select the Stream
  - Next, select the Stream from which the baseline exists. **Note:** if the component is *new* then you will need to select *All Streams* to see its initial baseline.
  - In this case, select **All Streams**
  - Click on the initial baseline or the desired baseline as your project for the desired Component.
  - Click **OK**



- You should now see the specified component baseline in the **Change Rebase Configuration Window**



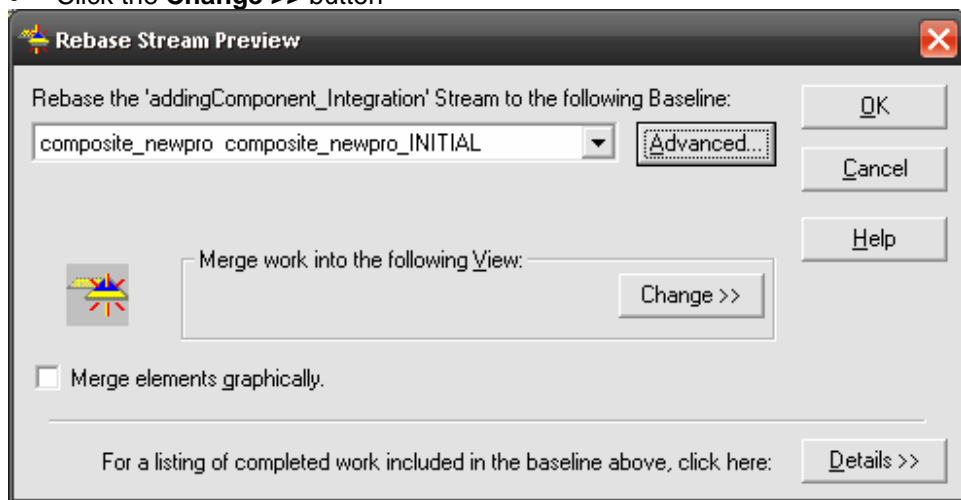
- **Note:** You can repeat the above process to add more than one component during the rebase process.
- Click **OK** to return to the Rebase Preview Window.



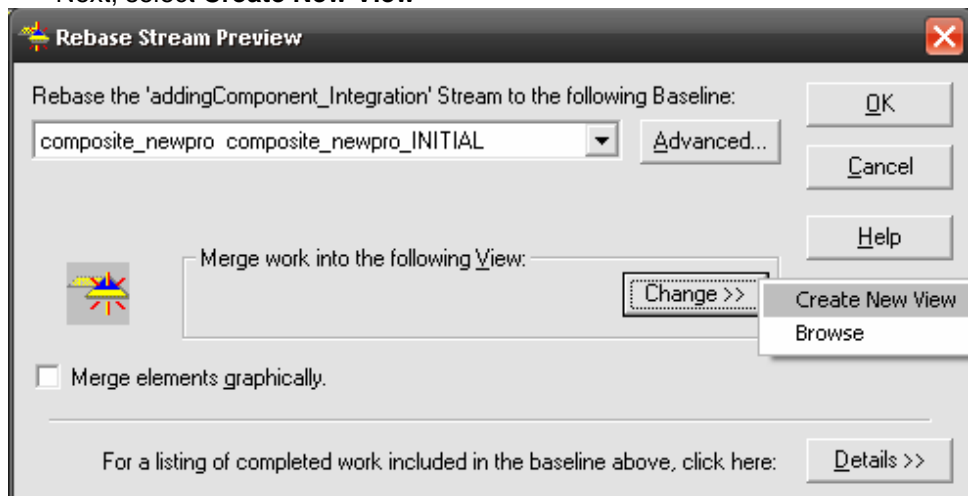
### Merge Work

The Merge Work view is necessary since the streams configuration will change to make the new component available. Views in rebases are also necessary since merges may occur. The view's configuration specifications will be updated making it available to the project and to the stream. Clicking the **Change** button will allow you to browse an existing view or create a new view into the stream.

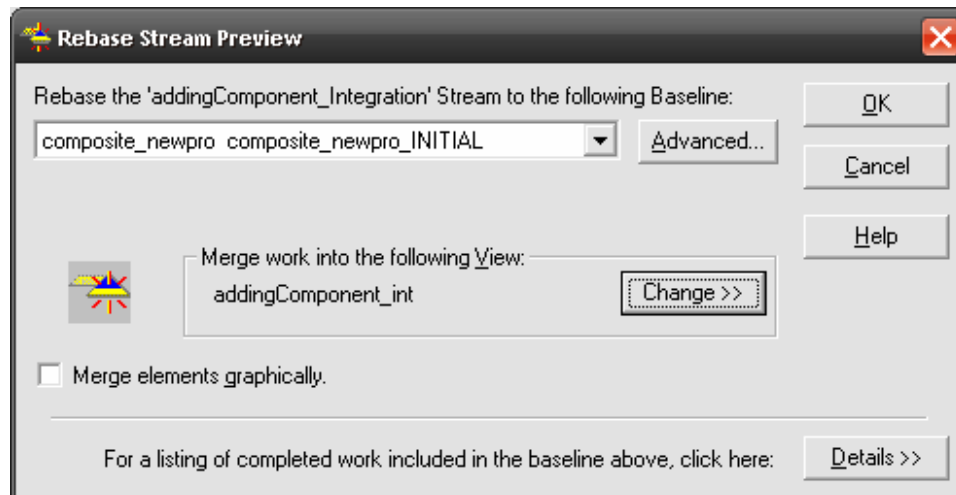
5. Merge work into the following view
  - Click the **Change >>** button



- Next, select **Create New View**



- Select a view. In this example, we selected **addingComponent\_int**.
- Click **OK** to start the Rebase process

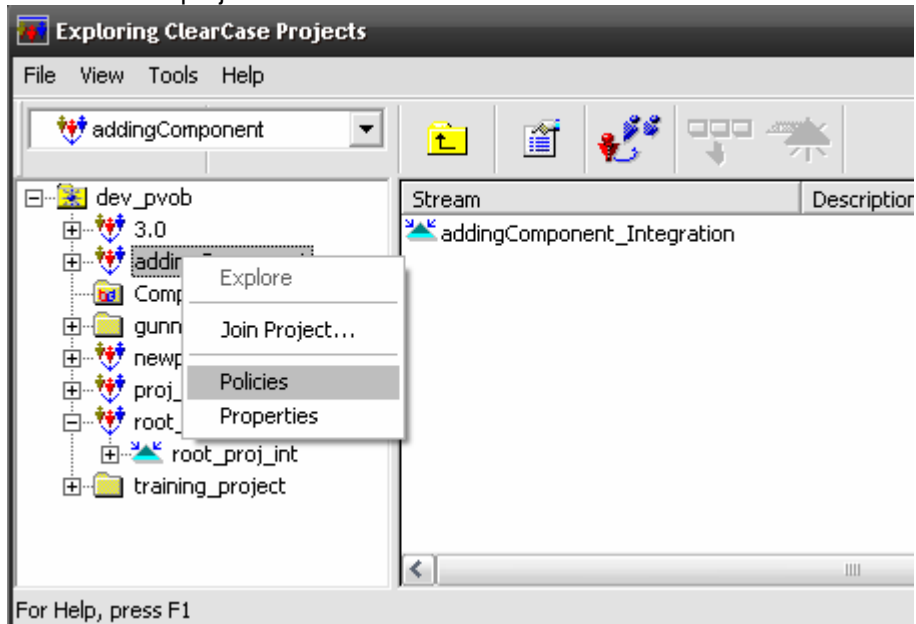


- You should now see a rebase window [not shown]
- You will then be prompted to complete the rebase and close the window

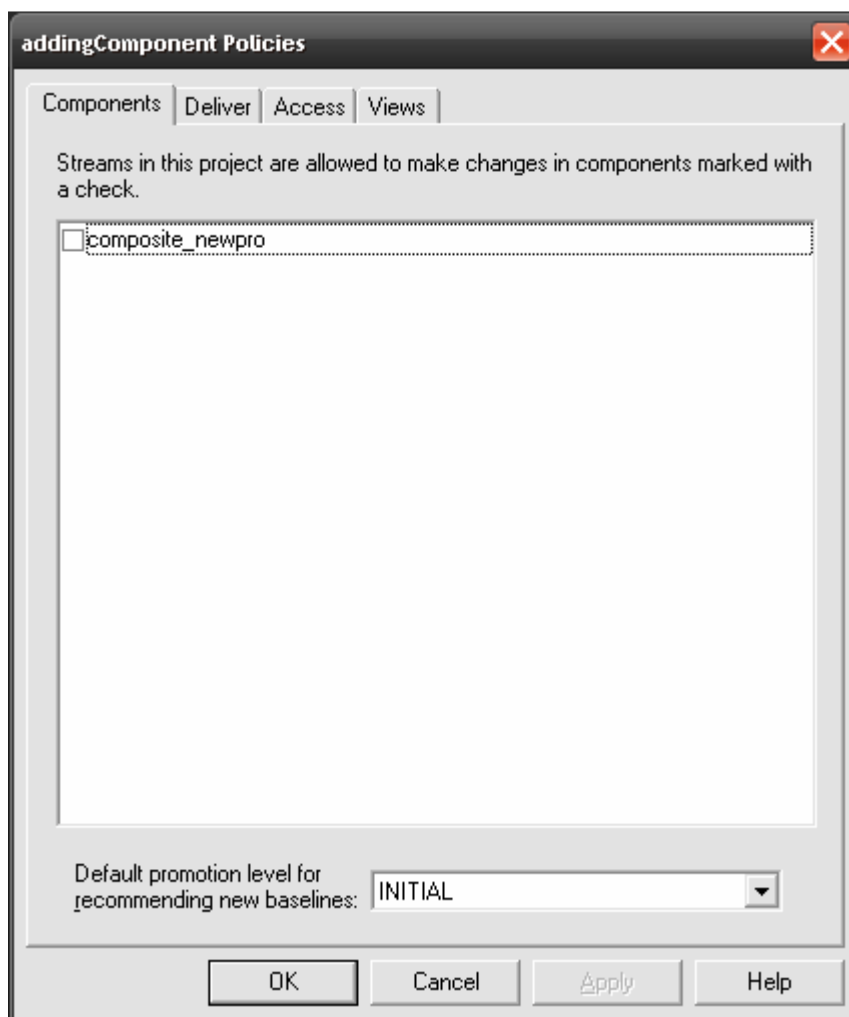


**Confirm Status**

- Let's go back to the Project Explorer and confirm that the component is now available in the project.
  - Right-click on the Project
  - Select the project **Policies**



7. On the **addingComponent Policies** window, view the component in the Components tab. This is where you can decide to make the component *modifiable* in the Project. **Note:** THIS PROCESS IS IRREVERSABLE!!! Once the component is made modifiable it can never be made un-modifiable.
  - Simply checking the box to the left of the component will allow you to make the component modifiable. In this case, we will leave it unchecked.
  - Click **OK** to complete this exercise.



## Trademarks, Copyrights and Disclaimers

The following terms are trademarks or registered trademarks of International Business Machines Corporation in the United States, other countries, or both:

IBM	CICS	IMS	MQSeries	Tivoli	
IBM (logo)	Cloudscape	Informix	OS/390	WebSphere	
e (logo) business	DB2	iSeries	OS/400	xSeries	
AIX	DB2 Universal Database	Lotus	pSeries	zSeries	

Java and all Java-based trademarks are trademarks of Sun Microsystems, Inc. in the United States, other countries, or both.

Microsoft, Windows, Windows NT, and the Windows logo are registered trademarks of Microsoft Corporation in the United States, other countries, or both.

Intel, ActionMedia, LANDesk, MMX, Pentium and ProShare are trademarks of Intel Corporation in the United States, other countries, or both.

UNIX is a registered trademark of The Open Group in the United States and other countries.

Linux is a registered trademark of Linus Torvalds.

Other company, product and service names may be trademarks or service marks of others.

Product data has been reviewed for accuracy as of the date of initial publication. Product data is subject to change without notice. This document could include technical inaccuracies or typographical errors. IBM may make improvements and/or changes in the product(s) and/or program(s) described herein at any time without notice. Any statements regarding IBM's future direction and intent are subject to change or withdrawal without notice, and represent goals and objectives only. References in this document to IBM products, programs, or services does not imply that IBM intends to make such products, programs or services available in all countries in which IBM operates or does business. Any reference to an IBM Program Product in this document is not intended to state or imply that only that program product may be used. Any functionally equivalent program, that does not infringe IBM's intellectual property rights, may be used instead.

Information is provided "AS IS" without warranty of any kind. THE INFORMATION PROVIDED IN THIS DOCUMENT IS DISTRIBUTED "AS IS" WITHOUT ANY WARRANTY, EITHER EXPRESS OR IMPLIED. IBM EXPRESSLY DISCLAIMS ANY WARRANTIES OF MERCHANTABILITY, FITNESS FOR A PARTICULAR PURPOSE OR NONINFRINGEMENT. IBM shall have no responsibility to update this information. IBM products are warranted, if at all, according to the terms and conditions of the agreements (e.g., IBM Customer Agreement, Statement of Limited Warranty, International Program License Agreement, etc.) under which they are provided. Information concerning non-IBM products was obtained from the suppliers of those products, their published announcements or other publicly available sources. IBM has not tested those products in connection with this publication and cannot confirm the accuracy of performance, compatibility or any other claims related to non-IBM products. IBM makes no representations or warranties, express or implied, regarding non-IBM products and services.

The provision of the information contained herein is not intended to, and does not, grant any right or license under any IBM patents or copyrights. Inquiries regarding patent or copyright licenses should be made, in writing, to:

IBM Director of Licensing  
IBM Corporation  
North Castle Drive  
Armonk, NY 10504-1785  
U.S.A.

Performance is based on measurements and projections using standard IBM benchmarks in a controlled environment. All customer examples described are presented as illustrations of how those customers have used IBM products and the results they may have achieved. The actual throughput or performance that any user will experience will vary depending upon considerations such as the amount of multiprogramming in the user's job stream, the I/O configuration, the storage configuration, and the workload processed. Therefore, no assurance can be given that an individual user will achieve throughput or performance improvements equivalent to the ratios stated here.

© Copyright International Business Machines Corporation 2005, 2006, 2007. All rights reserved.

Note to U.S. Government Users - Documentation related to restricted rights-Use, duplication or disclosure is subject to restrictions set forth in GSA ADP Schedule Contract and IBM Corp.

