



IBM Education Assistant

**IBM Rational ClearCase™ (version 7.x)
Unified Change Management™**

Exercise 3: Understanding Project Policies

Rational. software



© Copyright International Business Machines Corporation 2005, 2006, 2007. All rights reserved. Note to U.S. Government Users Restricted Rights -- Use, duplication or disclosure restricted by GSA ADP. Schedule Contract with IBM Corp.

Contributors: Marcus Matic, Alex Grillakis, and Will Frontiero



Exercise 3: Understanding Project Policies

Set or Unset Project-Wide Policies

You can set or unset project-wide policies, such as specifying that views attached to the integration stream must be snapshot views. Remember that policies are identified by their keywords. The table below describes these policies and lists the keywords used to set them.

Command-Line

1. From the command line interface (CLI), use the KEYWORDS below to enable or disable any policy. For example: (-policy = enable the policy) and (-npolicy = disable the policy).
 - a. C:\>cleartool chproject -policy POLICY_CHPROJECT_UNRESTRICTED project:COMPANY_REL1@COMPANY_PVOB
 - b. C:\>cleartool chproject -npolicy POLICY_CHPROJECT_UNRESTRICTED project:COMPANY_REL1@COMPANY_PVOB

UCM Project Policies

Policy	Keyword
Recommend snapshot views for integration work.	POLICY_UNIX_INT_SNAP (UNIX) POLICY_WIN_INT_SNAP (Windows)
Recommend snapshot views for development work.	POLICY_UNIX_DEV_SNAP (UNIX) POLICY_WIN_DEV_SNAP (Windows)
Skip permission checking to allow any user to modify an existing project with chproject .	POLICY_CHPROJECT_UNRESTRICTED
Require a development stream to be based on the current recommended baselines before it can deliver changes to its default target stream.	POLICY_DELIVER_REQUIRE_REBASE
Do not allow delivery from a development stream that has checkouts.	POLICY_DELIVER_NCO_DEVSTR

UCM Project Policies (cont'd)

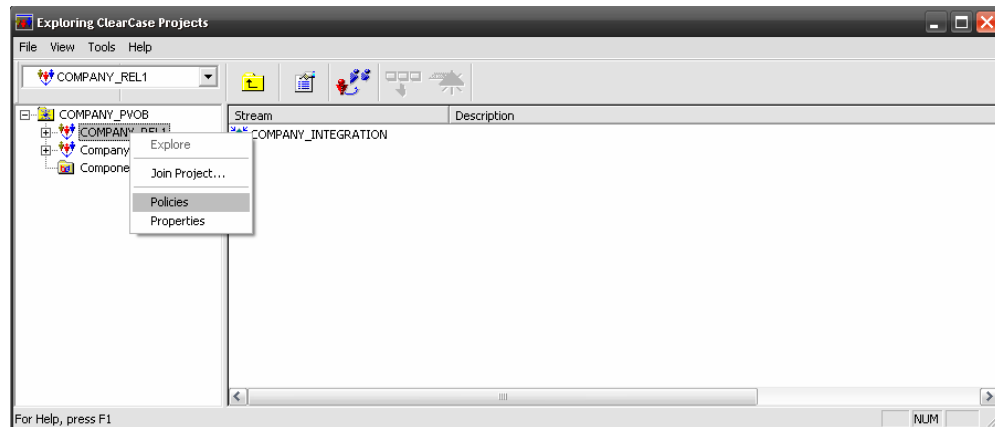
Policy	Keyword
<p>Allow a deliver operation from a stream in the same project to contain changes in components that are not included in the target stream's configuration. The changes in the missing components are not delivered.</p>	<p>POLICY_INTRAPROJECT_DELIVER_ALLOW_MISSING_TGTCOMPS</p>
<p>Allow streams in this project to accept changes in a deliver operation from a stream in a different project.</p>	<p>POLICY_INTERPROJECT_DELIVER</p>
<p>Allow a deliver operation from a stream in a different project to include changes from the stream's foundation baselines. This policy is ignored if interproject delivery is disabled.</p>	<p>POLICY_INTERPROJECT_DELIVER_FOUNDATION_CHANGES</p>
<p>Require a deliver operation from a stream in a different project to deliver changes in all components. This policy is ignored if interproject delivery is disabled.</p>	<p>POLICY_INTERPROJECT_DELIVER_REQUIRE_TGTCOMP_VISIBILITY</p>
<p>Allow a deliver operation from a stream in a different project to contain changes in components that are not modifiable in the target stream's configuration. The changes in the nonmodifiable components are not delivered. This policy is ignored if interproject delivery is disabled.</p>	<p>POLICY_INTERPROJECT_DELIVER_ALLOW_NONMOD_TGTCOMPS</p>
<p>Note: Defaults are different for intraproject and interproject deliver operations.</p>	



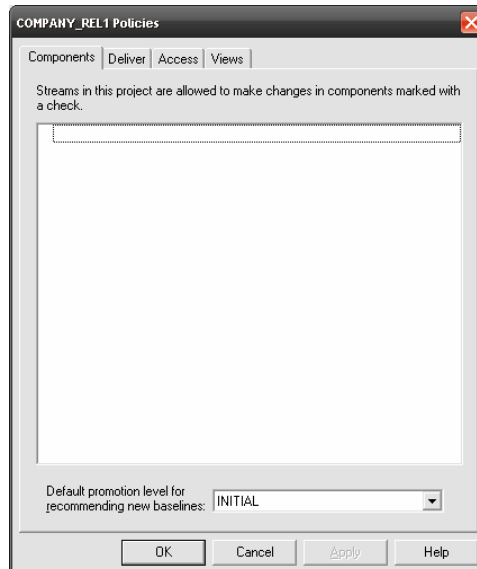
Project Explorer

These Policies can also be set from the Project Explorer.

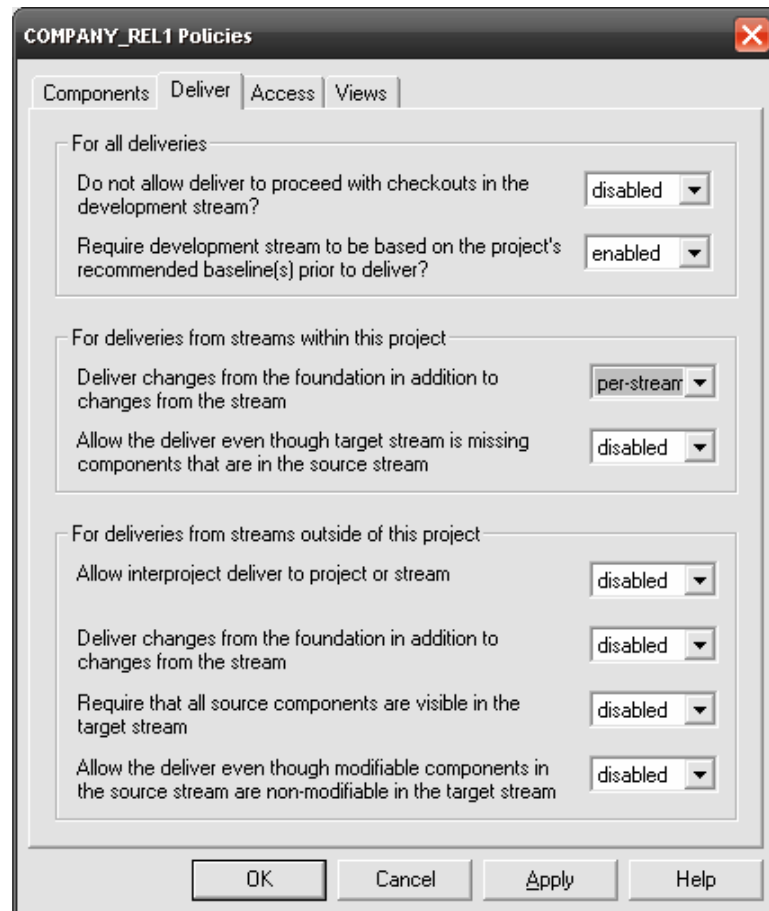
1. Open the Project Explorer
2. Expand the PVOB to make the project visible
3. **Right-click** on the project and select **Policies**



4. First set of policies allows you to make components modifiable by placing a checkmark next to the component. Since we have not yet added any components to the Project, no components are available under the "Components" tab



5. The next tab is the “Deliver” tab. This tab will allow you to set the deliver policies from this project. You can see in the screen shot below that you have three options for each policy.
 - a. Deliver policies set at the project level affect all streams in the project. Possible settings are: **enabled**, **disabled**, and **per-stream**.
 - b. The enabled and disabled settings dictate the policy be in effect for all streams in the project, regardless of whatever policy is set at the stream level.
 - c. When a policy setting is per-stream, you can specify policy settings for individual streams.



7. Lastly, the “Views” tabs sets the default view types presented to users when they join this project through the Join Project Wizard. This policy sets default view types only for first-time users of the Join Project Wizard. If a user has previously set a preference for view types, those preferences supercede the values set here.
 - a. You can set separate values for each of these four views:
 - i. Development views on Windows NT or Windows 2000 systems
 - ii. Integration views on Windows NT or Windows 2000 systems
 - iii. Development views on UNIX systems
 - iv. Integration views on UNIX systems

Note: This policy is not applicable for ClearCase LT, which uses the snapshot view type only.



Trademarks, Copyrights and Disclaimers

The following terms are trademarks or registered trademarks of International Business Machines Corporation in the United States, other countries, or both:

IBM	CICS	IMS	MQSeries	Tivoli	
IBM (logo)	Cloudscape	Informix	OS/390	WebSphere	
e (logo) business	DB2	iSeries	OS/400	xSeries	
AIX	DB2 Universal Database	Lotus	pSeries	zSeries	

Java and all Java-based trademarks are trademarks of Sun Microsystems, Inc. in the United States, other countries, or both.

Microsoft, Windows, Windows NT, and the Windows logo are registered trademarks of Microsoft Corporation in the United States, other countries, or both.

Intel, ActionMedia, LANDesk, MMX, Pentium and ProShare are trademarks of Intel Corporation in the United States, other countries, or both.

UNIX is a registered trademark of The Open Group in the United States and other countries.

Linux is a registered trademark of Linus Torvalds.

Other company, product and service names may be trademarks or service marks of others.

Product data has been reviewed for accuracy as of the date of initial publication. Product data is subject to change without notice. This document could include technical inaccuracies or typographical errors. IBM may make improvements and/or changes in the product(s) and/or program(s) described herein at any time without notice. Any statements regarding IBM's future direction and intent are subject to change or withdrawal without notice, and represent goals and objectives only. References in this document to IBM products, programs, or services does not imply that IBM intends to make such products, programs or services available in all countries in which IBM operates or does business. Any reference to an IBM Program Product in this document is not intended to state or imply that only that program product may be used. Any functionally equivalent program, that does not infringe IBM's intellectual property rights, may be used instead.

Information is provided "AS IS" without warranty of any kind. THE INFORMATION PROVIDED IN THIS DOCUMENT IS DISTRIBUTED "AS IS" WITHOUT ANY WARRANTY, EITHER EXPRESS OR IMPLIED. IBM EXPRESSLY DISCLAIMS ANY WARRANTIES OF MERCHANTABILITY, FITNESS FOR A PARTICULAR PURPOSE OR NONINFRINGEMENT. IBM shall have no responsibility to update this information. IBM products are warranted, if at all, according to the terms and conditions of the agreements (e.g., IBM Customer Agreement, Statement of Limited Warranty, International Program License Agreement, etc.) under which they are provided. Information concerning non-IBM products was obtained from the suppliers of those products, their published announcements or other publicly available sources. IBM has not tested those products in connection with this publication and cannot confirm the accuracy of performance, compatibility or any other claims related to non-IBM products. IBM makes no representations or warranties, express or implied, regarding non-IBM products and services.

The provision of the information contained herein is not intended to, and does not, grant any right or license under any IBM patents or copyrights. Inquiries regarding patent or copyright licenses should be made, in writing, to:

IBM Director of Licensing
IBM Corporation
North Castle Drive
Armonk, NY 10504-1785
U.S.A.

Performance is based on measurements and projections using standard IBM benchmarks in a controlled environment. All customer examples described are presented as illustrations of how those customers have used IBM products and the results they may have achieved. The actual throughput or performance that any user will experience will vary depending upon considerations such as the amount of multiprogramming in the user's job stream, the I/O configuration, the storage configuration, and the workload processed. Therefore, no assurance can be given that an individual user will achieve throughput or performance improvements equivalent to the ratios stated here.

© Copyright International Business Machines Corporation 2005, 2006, 2007. All rights reserved.

Note to U.S. Government Users - Documentation related to restricted rights-Use, duplication or disclosure is subject to restrictions set forth in GSA ADP Schedule Contract and IBM Corp.

