



IBM Software Group

# IBM® Rational® Application Developer V6

## *Debug Enhancements*



@business on demand.

© 2004 IBM Corporation  
Updated January 24, 2005

## Goals

- Review languages and environments supported by Application Developer
- Describe enhancements made to Application Developer's overall debugging functionality

## Agenda

- Overview
- Overall Debugging Enhancements

## Section

# *Overview*

## Debugging Tools

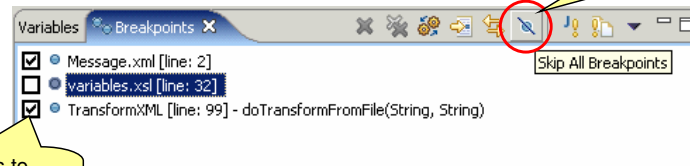
- Application Developer includes support for debugging several languages and environments
  - ▶ Java™
  - ▶ Compiled Languages
  - ▶ Active Script (client-side JavaScript or VisualBasic script)
  - ▶ SQL Stored Procedures
  - ▶ EGL
  - ▶ XSL Transformations
  - ▶ SQLJ
  - ▶ Mixed language 
  - ▶ WebSphere® Application Server environment (includes servlets, JSPs, and EJBs)

## Section

# ***Overall Enhancements***

## General Functionality

- Global breakpoint enable/disable
  - ▶ Skips enabled breakpoints



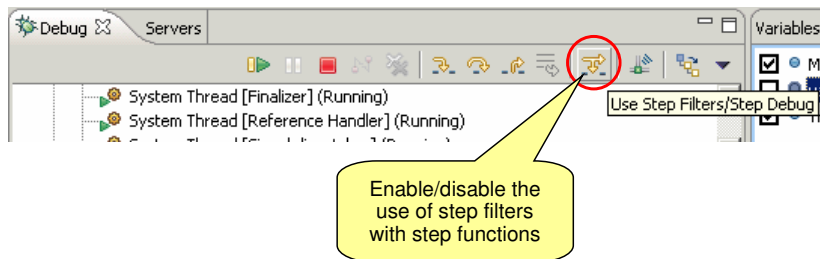
Check boxes to enable/disable individual breakpoints

Enables/disables all breakpoints

- Step-by-step disabled by default
  - ▶ Enable through Preferences > Run/Debug > Java and Mixed Language Debug
  - ▶ Toggle through Debug view

## General Functionality

- New button in Debug view to enable or disable the filtering for the “step” functions (step into and step return)
  - ▶ Configure step filters in Preferences > Run/Debug > Java and Mixed Language Debug > Step Filters





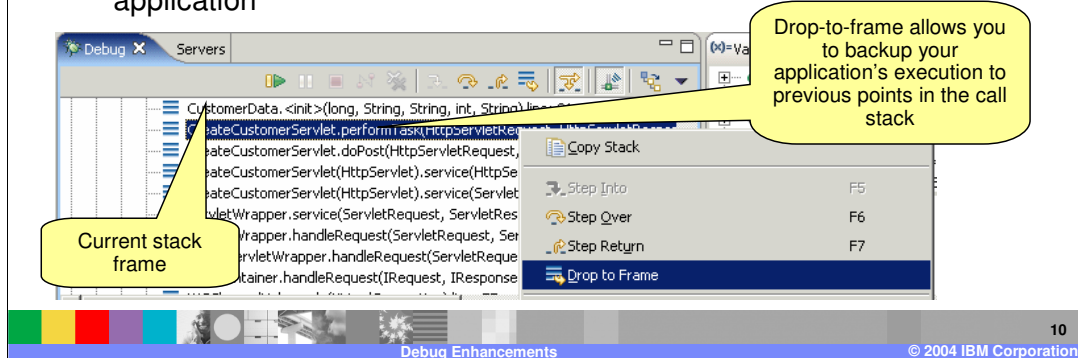
## Source Location Definition

- Simpler interface for setting source locations

The image compares two versions of the Source Location Definition interface. On the left, 'Version 5 Implementation' shows a 'Source Lookup Path' list with multiple buttons: 'Up', 'Down', 'Remove', 'Add Projects...', 'Add JARs...', 'Add External JARs...', and 'Advanced...'. A red box highlights these buttons, with a callout stating: 'Multiple buttons available for adding the different types of source files'. On the right, 'Version 6 Implementation' shows a simplified interface with a single 'Add...' button highlighted by a red box. A callout states: 'Adding source has been reduced to one button'. Below this, an 'Add Source' dialog box is shown with a tree view of source types: Archive, Debug engine, Directory, External Archive, Folder, Java Classpath Variable, Java Library, Java Project, Project, Working set, and Workspace. A callout states: 'Add Source window allows you add different locations of source code to your launch configuration'. The bottom of the slide features a blue bar with 'Debug Enhancements' on the left, a page number '9' in the center, and '© 2004 IBM Corporation' on the right.

## Drop-to-Frame Functionality

- Allows you back up execution of your application
  - Now supported when debugging applications on WebSphere Application Server
    - Only available when debugging Java
- Useful when testing extreme values
  - Multiple input values can be entered without having to rerun application



## Capabilities Support

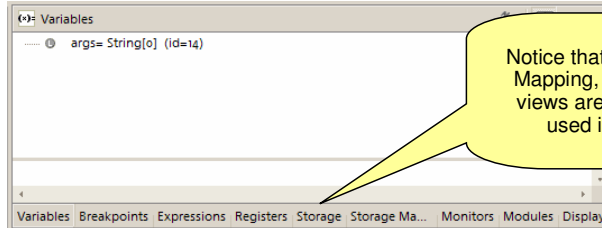
- Capabilities reduces UI clutter by hiding workbench features until they are needed
  - ▶ Debuggers participate in Capabilities support
  - ▶ For example XSLT debugging is disabled by default or until an XML project is created
- Enable capabilities through Preferences > Workbench > Capabilities

## View Management

- Allows debug-related views to be opened in non-debug perspectives
- UI clutter is reduced by only opening the views necessary for debugging the launched process
  - ▶ After process has terminated the opened debug-related views are closed
- Configured through either the Debug view or Window > Preferences > Run/Debug > View Management
  - ▶ Debug perspective participates in View Management by default
  - ▶ Additional perspectives can be configured to participate

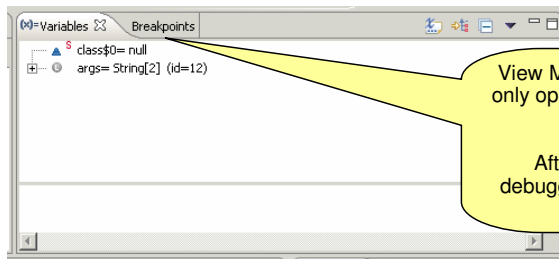
## View Management: Example

Version 5: Debug Perspective – currently debugging a Java process



Notice that the Registers, Storage, Storage Mapping, Monitors, Modules, and Display views are open even though they are not used in debugging a Java process

Version 6: Debug Perspective - currently debugging a Java process



View Management reduces the UI clutter by only opening the views used to debug a Java process

After the process has finished being debugged, the related debugging views are closed

## Section

# *Summary and Reference*

## Summary

- Application Developer allows you to debug many different languages and environments
- Improvements have been made to the user interface to make debugging your application's easier

## Trademarks, Copyrights, and Disclaimers

The following terms are trademarks or registered trademarks of International Business Machines Corporation in the United States, other countries, or both:

IBM	CICS	IMS	MQSeries	Tivoli
IBM (logo)	Cloudscape	Informix	OS/390	WebSphere
e(logo)/business	DB2	iSeries	OS/400	xSeries
AIX	DB2 Universal Database	Lotus	pSeries	zSeries

Java and all Java-based trademarks are trademarks of Sun Microsystems, Inc. in the United States, other countries, or both.

Microsoft, Windows, Windows NT, and the Windows logo are registered trademarks of Microsoft Corporation in the United States, other countries, or both.

Intel, ActionMedia, LANDesk, MMX, Pentium and ProShare are trademarks of Intel Corporation in the United States, other countries, or both.

UNIX is a registered trademark of The Open Group in the United States and other countries.

Linux is a registered trademark of Linus Torvalds.

Other company, product and service names may be trademarks or service marks of others.

Product data has been reviewed for accuracy as of the date of initial publication. Product data is subject to change without notice. This document could include technical inaccuracies or typographical errors. IBM may make improvements and/or changes in the product(s) and/or program(s) described herein at any time without notice. Any statements regarding IBM's future direction and intent are subject to change or withdrawal without notice, and represent goals and objectives only. References in this document to IBM products, programs, or services does not imply that IBM intends to make such products, programs or services available in all countries in which IBM operates or does business. Any reference to an IBM Program Product in this document is not intended to state or imply that only that program product may be used. Any functionally equivalent program, that does not infringe IBM's intellectual property rights, may be used instead.

Information is provided "AS IS" without warranty of any kind. THE INFORMATION PROVIDED IN THIS DOCUMENT IS DISTRIBUTED "AS IS" WITHOUT ANY WARRANTY, EITHER EXPRESS OR IMPLIED. IBM EXPRESSLY DISCLAIMS ANY WARRANTIES OF MERCHANTABILITY, FITNESS FOR A PARTICULAR PURPOSE OR NONINFRINGEMENT. IBM shall have no responsibility to update this information. IBM products are warrantable, if at all, according to the terms and conditions of the agreements (e.g., IBM Customer Agreement, Statement of Limited Warranty, International Program License Agreement, etc.) under which they are provided. Information concerning non-IBM products was obtained from the suppliers of those products, their published announcements or other publicly available sources. IBM has not tested those products in connection with this publication and cannot confirm the accuracy of performance, compatibility or any other claims related to non-IBM products. IBM makes no representations or warranties, express or implied, regarding non-IBM products and services.

The provision of the information contained herein is not intended to, and does not, grant any right or license under any IBM patents or copyrights. Inquiries regarding patent or copyright licenses should be made, in writing, to:

IBM Director of Licensing  
IBM Corporation  
North Castle Drive  
Armonk, NY 10504-1785  
U.S.A.

Performance is based on measurements and projections using standard IBM benchmarks in a controlled environment. All customer examples described are presented as illustrations of how those customers have used IBM products and the results they may have achieved. The actual throughput or performance that any user will experience will vary depending upon considerations such as the amount of multiprogramming in the user's job stream, the I/O configuration, the storage configuration, and the workload processed. Therefore, no assurance can be given that an individual user will achieve throughput or performance improvements equivalent to the ratios stated here.

© Copyright International Business Machines Corporation 2004. All rights reserved.

Note to U.S. Government Users - Documentation related to restricted rights-Use, duplication or disclosure is subject to restrictions set forth in GSA ADP Schedule Contract and IBM Corp.