
IBM Operational Decision Manager V8.5

Overview



This presentation provides the overview of the product enhancements to IBM Operational Decision Manager version 8.5. You should already be familiar with the functionality of IBM Operational Decision Manager version 8.0.1 as a base line for the enhancements in this presentation.

Table of contents

- What's new in Decision Center
 - Decision Governance Framework
 - Business Console enhancements
- What's new in Decision Server
 - REST API for rule set execution
 - TCP/IP management enhancement
- Worklight mobile adapter sample
- Business Embedded Rules sample and tutorial
- z/OS® enhancements
- Platforms and packaging components information



The topics cover the new features and enhancements in Decision Center and Decision Server. A new Worklight mobile adapter sample shows you how to integrate decision rules into the mobile application by using Worklight framework. And the embedded web application sample and rule project management tutorial demonstrate the new features that are delivered in Business Rules Embedded SDK. In addition, some z/OS platform specific improvements are introduced. At the end, you get a summary of platform changes and package component information.

What's new in Decision Center – Decision Governance Framework

- Motivation
 - Every organization, small or large, wants flexible, complex, and reliable rule project management and process tracking capabilities
 - No organization can afford the time and money to build their own
- Solution: a new Decision Center built-in framework
 - Provides a comprehensive set of integrated capabilities to support governed change management cycles
 - Is based on releases and activities within a decision service
- Benefits
 - Simplifies the product usage
 - Provides intuitive guidance to all the participants
 - Supports full traceability and audit of change process cycle
 - Suitable for both small and large projects



In Decision Center version 8.5, a new Decision Governance Framework is introduced.

Every organization, no matter small or large, needs to manage and track the processes of the rule project changes. But most of the organizations cannot afford the time and money on resources and technologies to build their own.

In version 8.5, Decision Center offers a ready-to-use prescriptive method for change management and governance, based on a framework that uses decision services, releases, and activities.

This built-in framework makes it easier to use and follow in the Decision Center. It guides all the participants during the change and validation cycle of a rule based decision service. It also provides full support on the traceability and audit of the change requirements, activities, and approval processes. It is flexible and suitable for managing both small and large projects. The business organizations can take the benefits of this solution without relying on additional IT resources to implement an external governance structure.

What's new in Decision Center – Business Console

- Decision table editor
 - A more productive tool
 - A single editor for both automatic and manual row ordering modes
 - Usability tune-up
- Rule version comparison
 - Enables business user to see granular changes from version to version
 - Supports both action rule and decision table
- Other improvements
 - Enhanced folder operations
 - Rule can be restored from snapshot comparison and rule comparison
 - Full accessibility

	Yearly repayment	Corporate score	Grade	Message
1	[0; 10,000]	≥ 900	A	Very low risk loan
2	[0; 10,000]	[600; 900]	A	Very low risk loan
3	[0; 10,000]	[300; 600]	B	Low risk loan
4	[10,000; 30,000]	≥ 900	A	Very low risk loan
5	[10,000; 30,000]	[600; 900]	B	Low risk loan
6	[10,000; 30,000]	[300; 600]	C	Average risk loan
7	[30,000; 60,000]	≥ 900	B	Low risk loan
8	[30,000; 60,000]	[600; 900]	B	Average risk loan
9	[30,000; 60,000]	[300; 600]	C	Low risk loan
10	> 60,000	≥ 900	D	Average risk loan
11	> 60,000	[600; 900]	C	Risky loan
12	> 60,000	[300; 600]	D	Average risk loan
13			E	Risky loan
				Very risky loan

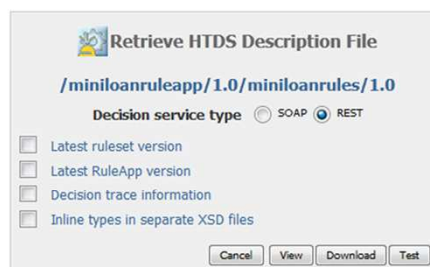
In Business Console, the enhanced decision table editor helps business users work more efficiently and productively. First, you notice that more common editing functions are added, such as cut, copy, paste, undo, and redo. And you can transfer the data between the decision table editor and an external spreadsheet application like Excel. This enables business users to work offline and takes advantage of the other application's functionality.

For simplicity and consistency, this enhanced decision table editor is now used for both automatic and manual row ordering and table editing. There are also some usability improvements, including gap and overlap checking functions, and action cell enable and disable functions.

Rule version comparison is a new feature introduced in version 8.5. The business user can now easily review the granular changes made to the rules. Other Business Console improvements include folder operations, rule restoration, and full accessibility support.

What's new in Decision Server – REST API for rule set execution

- The REST API services include
 - XML payload sample generation
 - XSD validation
 - Rule set execution
- Benefits
 - No need for a client library or a complex configuration to interact with a remote Rule Execution Server instance
 - Work across environments or from various client applications
 - Easily move the execution from local to remote Rule Execution Server
- Rule Execution Server Console provides
 - View and download WADL representation
 - Rule set execution REST test tool



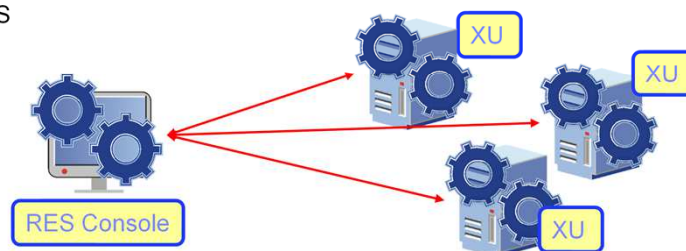
In version 8.0.1, you can use the REST API to manage rule application resources over remote Rule Execution Server instance. In version 8.5, a new REST API for rule set execution is provided. You can use it to generate sample XML payload, validate XML structure, and run the rule set through the HTTP protocol.

With these REST services, you do not need to add any client library or perform complex configuration. You can work across environments or from other client applications. It is also easy to move the execution from a local to a remote Rule Execution Server.

In the Rule Execution Server console, you can view and download the WADL representation of a deployed rule set. The new REST test tool can help you get familiar with the rule set format and test the payload when you develop your client applications.

What's new in Decision Server – other enhancements

- TCP/IP management enhancements
 - Enable monitor and manage execution unit instances in different JVM or cluster from a single Rule Execution Server console
 - Support both Java SE and Java EE Rule Execution Server
 - Also applicable for Rule Execution Server on WebSphere® Application Server for z/OS



- Rule Designer uses Eclipse SDK 3.6.2 with JDK 7

In version 8.0.1, the TCP/IP notification support is added. But you can only manage Java SE execution unit instances running on different JVMs or JMX MBean servers. In version 8.5, you can monitor and manage remote execution unit instances through the Rule Execution Server console in TCP/IP management mode. Both Java EE and Java SE Rule Execution Servers are supported.

This enhancement is also applicable for Rule Execution Server on WebSphere Application Server for z/OS, which enables consistent notification across the z/OS platform. For example, you can configure Java SE and Java EE execution units running on distributed platforms to connect to the zRules Execution Server console.

The version 8.5 Rule Designer uses Eclipse SDK 3.6.2, which by default comes with JDK 7. If you plan to deploy the rule applications to the server with JDK 6, you need to reset the JDK version in Eclipse before deployment.

Worklight mobile adapter sample

- A new mobile sample to showcase how you can develop and automate decisions for mobile applications using the IBM Worklight framework
- Available on Sample Server
 - Run decisions in a Mobile environment
 - Utilize device independent information
 - Use Worklight facilities for mobile application development and deployment

Action Rule: position policy

General Information Category Filter

Documentation

Content

```

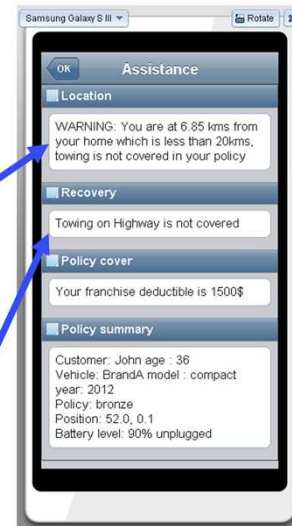
if the code name of the policy of 'the customer' is 'bronze'
and the distance between 'the customer' home and 'current location' is less than 20
then
  add 'WARNING: You are at '
  + the distance between 'the customer' home and 'current location' +
  ' kms from your home which is less than 20kms, towing is not covered in your policy'
  to the location report of 'the report' ;

```

Operational Decision Manager rules

General conditions

code name	franchise message	towing on highway message
1 gold	You have no franchise deductible	Towing on Highways is totally covered
2 silver	Your franchise deductible is 500\$	Towing on Highways is partially covered: you have a 50\$ franchise
3 bronze	Your franchise deductible is 1500\$	Towing on Highway is not covered
4		



7

Overview

© 2013 IBM Corporation

With the REST API for rule set execution, you can use the IBM Worklight framework to develop, test, and deploy business rules applications for mobile devices. A new sample is added to the sample server. It showcases how you can develop and automate decisions for a mobile application, which enables business users to integrate decision services and take advantage of mobile specific features like geo-location and device information.

Business Rules Embedded sample and tutorial

- Sample: Embedded new Dojo based rule editors into a host application
 - Use Decision Center web components to navigate, display and edit rule project artifacts
 - Create and delete rules and decision tables within folders with permission handling
- Tutorial: Embedded rule management with Operational Decision Manager
 - Export embedded rules from a host application to Operational Decision Manager
 - Take advantage of Operational Decision Manager more powerful capability
 - Deploy and run rule projects

Same editing panels as provided in Business Console

Current Project: **miniloan.rules**

Rule: **minimum credit score**

Create Rule Save Rule Remove Rule

```

if
  the credit score of 'the borrower' is less than 200
then
  add "Credit score below 200" to the messages of 'the loan';
  reject 'the loan'

```

Severity Line Message

5		The word ' is missing
---	--	-----------------------

Current Project: **loan.rules**

Rule: **repayment and score**

Create DT Save DT Remove DT

Edit preconditions Enable custom style

	debt to income	credit score	message	rejected
1	[0 %; 30 %]	[0; 200]	debt-to-income too high compared to credit score	-
2	[0 %; 30 %]	[200; 800]		-
3	[30 %; 45 %]	[0; 400]	debt-to-income too high compared to credit score	-
4	[30 %; 45 %]	[400; 800]		-
5	[45 %; 50 %]	[0; 800]	debt-to-income too high compared to credit score	-
6	[45 %; 50 %]	[800; 800]		-
7	> 50 %	[0; 800]	debt-to-income too high compared to credit score	-

8 Overview © 2013 IBM Corporation

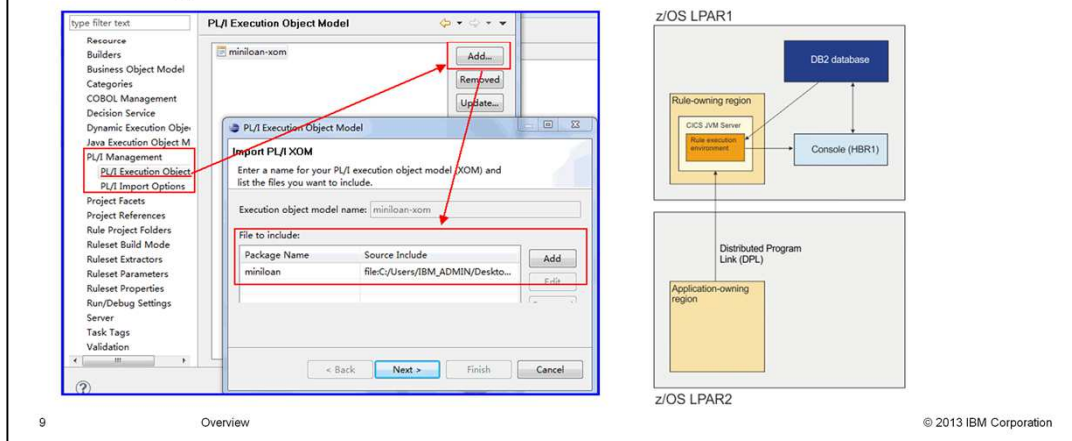
Business Rules Embedded is an SDK that allows its underlying Operational Decision Manager business rules technology to be integrated into another application or IBM product.

The new sample shows how to develop a web application that uses Decision Center web components to create and edit rules for host applications. It also demonstrates the project security management through the Decision Center locking mechanism.

The new tutorial guides you step by step through how to export embedded rules from a host application and manage them in Operational Decision Manager rule editors. It also shows different ways to deploy the rule projects to the embedded runtime and manage the rule set execution.

z/OS enhancements

- PL/I support for rule authoring and rule execution
- Flexible and simpler configuration process
- Improved CICS® rule-owning and application-owning regions
- Improved IMS™ integration
- Decision engine for z/OS



Here are some highlights of the z/OS enhancements.

PL/I is now supported to generate a PL/I XOM from a PL/I include file. You can design a BOM from a PL/I model, author rules, and enable rule execution of PL/I applications.

In previous Operational Decision Manager z/OS releases, the configuration parameters are complex and error-prone. In version 8.5, this configuration process has been improved by adding control statements, which are more flexible and simpler to use.

In version 8.5, You can also configure complex CICS environments that support application-owning and rule-owning regions.

When a COBOL application is running in a Message Processing Region, IMS can use a pre-initialization routine to establish a connection to a zRule Execution Server for z/OS. The routine removes the requirement for the COBOL application to connect and disconnect each time it runs, and can result in improvements to the overall performance.

You can now also run the decision engine on either WebSphere Application Server for z/OS or the zRule Execution Server for z/OS. You can deploy a rule set for use with the decision engine to the Rule Execution Server from Decision Center.

Supported platforms – changes from version 8.0.1

- Web Browsers:
 - Add: Internet Explorer 10
 - Remove: Internet Explorer 8
- Operating systems:
 - Deprecate: Windows® 2003 and Windows Vista
 - Remove: HP-UX PA-RISC
- Hypervisors:
 - Add: IBM z/VM® Hypervisor 6.2
- Application Servers:
 - Add: WebSphere Application Server 8.5 for Event runtime and Event Connectors
 - Remove: WebSphere Application Server 7.0
- Eclipse shell sharing
 - Add: Rational Application Developer / Rational Software Architect / Rational Developer System z® 8.5.1, Integration Designer 8.5
 - Remove: Rational Application Developer / Rational Software Architect / Rational Developer System 8.0.4, Integration Designer 8.0.1

On this slide, you can find the platform support differences between version 8.0.1 and version 8.5.

Version 8.5 adds Internet Explorer version 10 browser support and drops Internet Explorer version 8 support. For the operating systems, Windows 2003 and Windows Vista are deprecated and the support for HP-UX PA-RISC system is removed. For Hypervisors, Version 8.5 adds IBM z/VM Hypervisor 6.2 support. In addition, WebSphere Application Server version 8.5 is added for event runtime and event connectors, while WebSphere Application Server version 7.0 support is removed.

You can also find a list of Eclipse shell sharing product support changes at the bottom of this slide.

Package components

- WebSphere Application Server profile templates are now installed as a component

Profile templates for WebSphere Application Server V8.5

- Installs the events and rules profile templates and runtime for deploying Operational Decision Manager on WebSphere Application Server (requires a Decision Server license).

- Operational Decision Manager Express

IBM Operational Decision Manager Express

- Install

This option only installs the entitled rules capabilities by default. The Operational Decision Manager Express licence also prohibits the use of clustered topologies and places limits on processors to which it can be deployed. Check your licence for details of these deployment constraints.

Here is the information on the new package components.

Profile templates are required to create an Operational Decision Manager cluster on WebSphere Application Server. In version 8.5, you can install the profile templates as a component when you use Launchpad with a custom configuration, or use IBM Installation Manager. The profile templates component extends the repository on the computer that hosts the target WebSphere Application Server.

The product provides a new Express option. IBM Operational Decision Manager Express entitles you to use only the business rules capabilities, not the events capabilities, within a limited configuration. In particular, you cannot use Operational Decision Manager Express in a cluster environment and you will have access to limited capacity.

Summary

- What's new in Decision Center
 - Decision Governance Framework
 - Business Console enhancements
- What's new in Decision Server
 - REST API for rule set execution
 - TCP/IP management enhancement
- Worklight mobile adapter sample
- Business Rules Embedded sample and tutorial
- z/OS enhancements
- Platforms and packaging components information

In summary, IBM Operational Decision Manager version 8.5 delivers new and enhanced features in many areas of the product.

The Decision Center has a new Decision Governance Framework and several Business Console improvements.

In Decision Server, you can use a new REST API for rule set execution when developing client applications. You can manage remote execution units with TCP/IP management enhancements.

The Worklight adapter sample lets you integrate decisions with mobile devices using the Worklight framework.

You can display and edit rules in a host application from the new Business Rules Embedded web application sample. You can also follow the step-by-step tutorial to learn how to export embedded rules from a host application and manage them in the advanced Operational Decision Manager rule editors.

There are several z/OS enhancements, including new PL/I support, and CICS and IMS integration.

The last section summarized the platform changes and new packaging component offerings.

Feedback

Your feedback is valuable

You can help improve the quality of IBM Education Assistant content to better meet your needs by providing feedback.

1. Did you find this module useful?
2. Did it help you solve a problem or answer a question?
3. Do you have suggestions for improvements?

Click to send email feedback:

mailto:iea@us.ibm.com?subject=Feedback_about_ODM85_Overview.ppt

This module is also available in PDF format at: ../ODM85_Overview.pdf

You can help improve the quality of IBM Education Assistant content by providing feedback.



Trademarks, disclaimer, and copyright information

IBM, the IBM logo, ibm.com, CICS, IMS, System z, WebSphere, z/OS, and z/VM are trademarks or registered trademarks of International Business Machines Corp., registered in many jurisdictions worldwide. Other product and service names might be trademarks of IBM or other companies. A current list of other IBM trademarks is available on the web at "[Copyright and trademark information](http://www.ibm.com/legal/copytrade.shtml)" at <http://www.ibm.com/legal/copytrade.shtml>

Windows, and the Windows logo are registered trademarks of Microsoft Corporation in the United States, other countries, or both.

Other company, product, or service names may be trademarks or service marks of others.

THE INFORMATION CONTAINED IN THIS PRESENTATION IS PROVIDED FOR INFORMATIONAL PURPOSES ONLY. WHILE EFFORTS WERE MADE TO VERIFY THE COMPLETENESS AND ACCURACY OF THE INFORMATION CONTAINED IN THIS PRESENTATION, IT IS PROVIDED "AS IS" WITHOUT WARRANTY OF ANY KIND, EXPRESS OR IMPLIED. IN ADDITION, THIS INFORMATION IS BASED ON IBM'S CURRENT PRODUCT PLANS AND STRATEGY, WHICH ARE SUBJECT TO CHANGE BY IBM WITHOUT NOTICE. IBM SHALL NOT BE RESPONSIBLE FOR ANY DAMAGES ARISING OUT OF THE USE OF, OR OTHERWISE RELATED TO, THIS PRESENTATION OR ANY OTHER DOCUMENTATION. NOTHING CONTAINED IN THIS PRESENTATION IS INTENDED TO, NOR SHALL HAVE THE EFFECT OF, CREATING ANY WARRANTIES OR REPRESENTATIONS FROM IBM (OR ITS SUPPLIERS OR LICENSORS), OR ALTERING THE TERMS AND CONDITIONS OF ANY AGREEMENT OR LICENSE GOVERNING THE USE OF IBM PRODUCTS OR SOFTWARE.

© Copyright International Business Machines Corporation 2013. All rights reserved.