

---

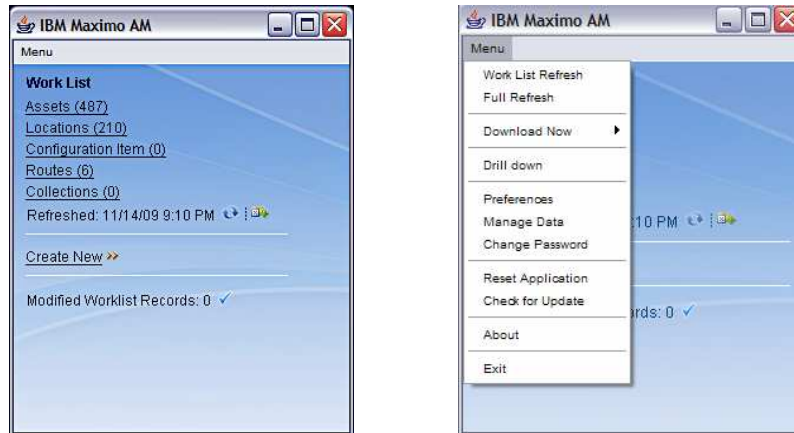
# IBM Maximo Mobile Suite, Version 7.1.1

## Mobile Asset Manager



Welcome to the training module for IBM Maximo® Mobile Suite version 7.1.1, Mobile Asset Manager. In this training module, you learn how to audit locations and use the basic features of Mobile Asset Manager.

## Start center



Maximo Mobile Asset Manager is a mobile application that runs on PDA devices. The appearance and menus in Maximo Mobile Asset Manager are similar to those in Maximo Mobile Inventory Manager and Maximo Mobile Work Manager.

On the Start center page, you can click the links in your work list to see the records that are currently available. From the drop-down menu, you can select **Download Now** to download a record that is not in your list. Enter the work order or asset number to download the asset directly to your device.

You can use the **Drill down** option to view your current work lists. Use the **Check for Update** option to obtain new updates for Mobile Asset Manager. The default setting is to check for updates when you log in to Mobile Asset Manager.

## Work lists

The image displays three screenshots of the IBM Maximo AM Actions page, each showing a different view of the work list data. Each screenshot has a title bar 'IBM Maximo AM' and a search bar.

**Left Screenshot (Locations View):** Shows a table with columns 'Location', 'Description', and 'Type'. The 'Type' column contains 'OPERATING' and a double arrow icon. The 'Location' column is highlighted.

Location	Description	Type
1011	Regis Retest 2	OPERATING >>
1010	LOCATION2B	OPERATING >>
99999	LOCATION1B	OPERATING >>
1007	LOCATION1	OPERATING >>
1006	AEM Loc 4	OPERATING >>
1005	Location	OPERATING >>
1004	AEM loc 02	OPERATING >>
1003	AEM Loc 01	OPERATING >>
9999	NEW LOCATION 1	OPERATING >>
NEW-1E	new-1	OPERATING >>

**Middle Screenshot (Assets View):** Shows a table with columns 'Asset', 'Description', and 'Location'. The 'Location' column is highlighted.

Asset	Description	Location
2091	Printer - Coler	BR200 >>
2090	Retest Regis 1	>>
2089	AEM - INVCOST filed issue CENT...	>>
2087	ASSET1	1007 >>
2085	AEM Asset 4	1006 >>
2084	AEM Asset 4	1006 >>
2082	aaaaa	1005 >>
2081	AEM asset 02	1004 >>
2080	AEM asset 02	1004 >>
2079	Asset AEM 01	1003 >>

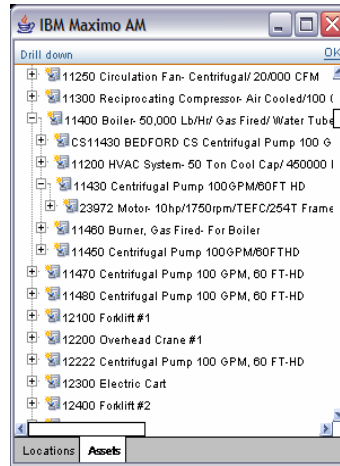
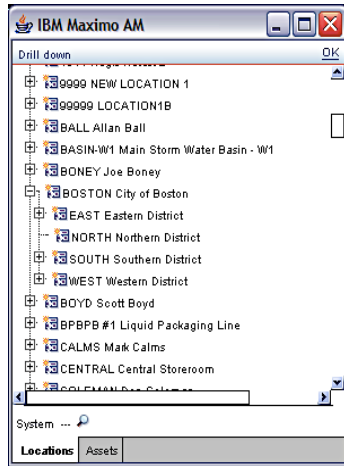
**Right Screenshot (Routes View):** Shows a table with columns 'Route' and 'Description'. The 'Route' column is highlighted.

Route	Description
1013	ROUTE1B >>
1012	ROUTE1 >>
1006	new route description >>
Q-PUMPS	Quarterly Pump Service >>
1005	Inspect PC Workstations >>
1002	Inspect Fire Extinguishers >>

At the bottom of each screenshot, there are tabs for 'Assets', 'Locations', 'CI', 'Routes', and 'Collections'. The 'Locations' tab is selected in the first, 'Assets' in the second, and 'Routes' in the third.

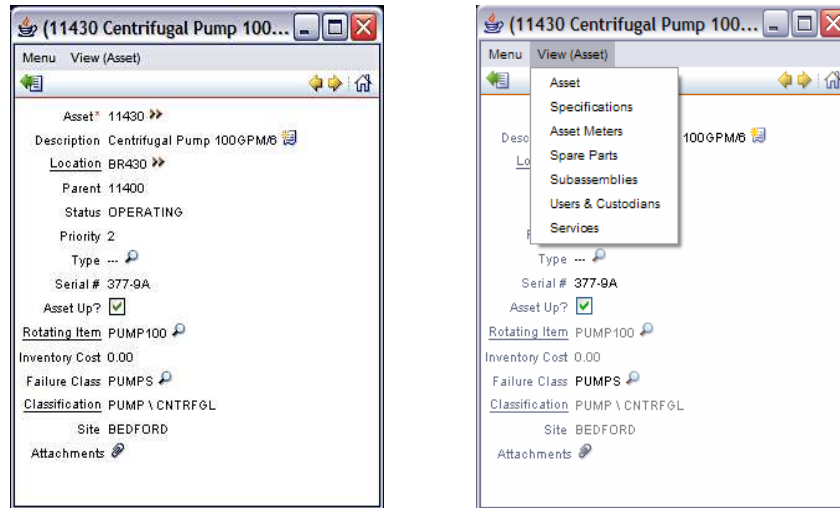
These screen shots are examples of the **Locations**, **Assets**, and **Routes** views on the Actions page. The work and data sets have been added to the same stream. Use the tabs at the bottom of the Actions page to switch between the views.

## Drill down



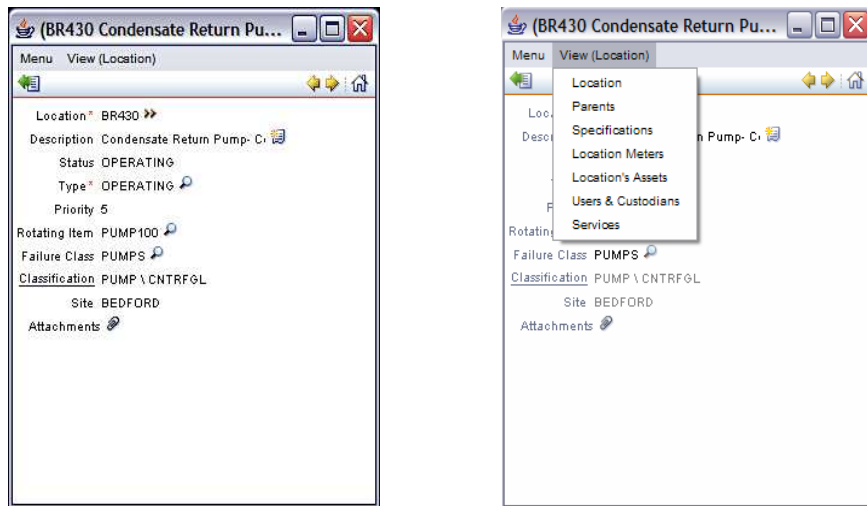
When you select the **Drill down** option from the Start Center menu, you see an overview of the **Locations** or **Assets**.

## Asset details



This is an example of the Asset details view. From the **View (Asset)** drop-down menu, you can view Asset, Specifications, Asset Meters, Spare Parts, Subassemblies, Users & Custodians, and Services—all the same functions as in core Maximo.

## Location details



You can audit a location's assets. Click **View (Location) > Location's Assets** and click the link at the bottom of the page to audit the location. If you are manually auditing the location, you can begin searching for the assets listed on the mobile device. If you are using bar code scanning, you can scan the items in the location. As you scan each item, it is removed from the list.

## Configuration Item details



7

Mobile Asset Manager

© 2011 IBM Corporation

This is a view of the Maximo Mobile Asset Manager Configuration Item (CI) details. From here, you can add new configuration items, specifications, and related configuration items. You can also perform asset audit discovery. Scan the serial number or the asset number on your device to remove that asset from the generated list. Audits performed from here are device-specific and not stored on the core Maximo.

## Asset audit and discovery

- The primary use case for the Mobile Asset Manager application is an asset audit or physical inventory of the fixed assets
- The application can function as a manual asset discovery tool to build the asset and location libraries in Maximo



If you find a decommissioned asset, change the status of that asset to decommissioned on the Audit Location screen. The new status is updated in core Maximo automatically. You can also add a new asset by going to the asset location and finding an additional device.



## Asset audit process

- An audit can be performed with or without bar code scanning
- Using bar codes makes the process more efficient, but all the functions are available for either scenario
  1. Download the locations and assets to be audited
  2. Navigate to the **Locations** work list
  3. Scan or select the first location to be audited and choose the **Location's Assets** view
  4. Select **Audit This Location**
  5. Verify the assets that are physically found. Scanning bar codes of these assets removes them from the list
  6. If a listed asset cannot be found, change the status to indicate that the asset is missing by creating a synonym status of **Operating**
  7. If any new assets are discovered, select **Create Asset** to create a new record for that asset
  8. When finished with this location, move to the next location and repeat these steps. Either scan the next location or move to the next location in the list

To audit assets, download the locations you want to audit, and then download the assets for that location. Navigate to the **Locations** work list. Scan or select the first location to be audited and choose the **Location's Assets** view to display the assets in that location.

Select **Audit This Location**. Verify the assets that are physically present at the location. Indicate the assets that are missing. List any new assets that you find with the **Create Asset** option.

## Create new records

Create new records with Maximo Mobile Asset Manager

- Identify a new location and new assets
- Create the new location and new assets on the device
- Send all new records at the same time to core Maximo

The new asset record can be inserted only when the new location and the new asset record are sent together

You can use Maximo Mobile Asset Manager to create records. Enter your new location and list the assets that are there. You must send all the new data, locations and assets, to the core at the same time. The new asset record can be inserted only when the new location and the new asset record are sent together.

## Associate new records

Associate new records using Maximo Mobile Asset Manager

- New records sent to core are compared with new records on the device
- New records sent to the core that are associated with new records on the device are displayed
- These associated records must be sent to core at the same time

New asset records sent to core Maximo are compared to new records on the device. New sent records associated with records on the device must be sent to the core at the same time.

---

## Summary

In this module, you learned how to audit locations and use the basic features of Mobile Asset Manager of Maximo Mobile version 7.1.1

In this module, you learned how to audit locations and use the basic features of Maximo Mobile version 7.1.1 Mobile Asset Manager.

## Feedback

Your feedback is valuable

You can help improve the quality of IBM Education Assistant content to better meet your needs by providing feedback.

- Did you find this module useful?
- Did it help you solve a problem or answer a question?
- Do you have suggestions for improvements?

Click to send email feedback:

[mailto:iea@us.ibm.com?subject=Feedback\\_about\\_mobile\\_asset\\_manager.ppt](mailto:iea@us.ibm.com?subject=Feedback_about_mobile_asset_manager.ppt)

This module is also available in PDF format at: [../mobile\\_asset\\_manager.pdf](..../mobile_asset_manager.pdf)

You can help improve the quality of IBM Education Assistant content by providing feedback.



## Trademarks, disclaimer, and copyright information

IBM, the IBM logo, ibm.com, and Maximo are trademarks or registered trademarks of International Business Machines Corp., registered in many jurisdictions worldwide. Other product and service names might be trademarks of IBM or other companies. A current list of other IBM trademarks is available on the web at "[Copyright and trademark information](http://www.ibm.com/legal/copytrade.shtml)" at <http://www.ibm.com/legal/copytrade.shtml>

THE INFORMATION CONTAINED IN THIS PRESENTATION IS PROVIDED FOR INFORMATIONAL PURPOSES ONLY. WHILE EFFORTS WERE MADE TO VERIFY THE COMPLETENESS AND ACCURACY OF THE INFORMATION CONTAINED IN THIS PRESENTATION, IT IS PROVIDED "AS IS" WITHOUT WARRANTY OF ANY KIND, EXPRESS OR IMPLIED. IN ADDITION, THIS INFORMATION IS BASED ON IBM'S CURRENT PRODUCT PLANS AND STRATEGY, WHICH ARE SUBJECT TO CHANGE BY IBM WITHOUT NOTICE. IBM SHALL NOT BE RESPONSIBLE FOR ANY DAMAGES ARISING OUT OF THE USE OF, OR OTHERWISE RELATED TO, THIS PRESENTATION OR ANY OTHER DOCUMENTATION. NOTHING CONTAINED IN THIS PRESENTATION IS INTENDED TO, NOR SHALL HAVE THE EFFECT OF, CREATING ANY WARRANTIES OR REPRESENTATIONS FROM IBM (OR ITS SUPPLIERS OR LICENSORS), OR ALTERING THE TERMS AND CONDITIONS OF ANY AGREEMENT OR LICENSE GOVERNING THE USE OF IBM PRODUCTS OR SOFTWARE.

© Copyright International Business Machines Corporation 2011. All rights reserved.