

# IBM Maximo Asset Management version V7.1

## Using E-Audit



This is a training module for Maximo® Asset Management V7.1. It demonstrates how to use the E-Audit function.

## Objectives

- When you complete this module, you can perform these tasks:
  - Enable auditing for a table
  - Select attributes to be audited
  - Set filtering for specific records

This module covers these topics:

- Enabling audit for a Maximo database table
- Selecting individual attributes from the table to be saved to the audit record
- Creating a filter to limit and specify which records are audited

## Maximo E-Audit overview

- Maximo allows audits to be kept of changes to database tables.
- Audit records created in separate table.
- Supplied audit tables are based on the table name but prefixed 'A\_' (for example A\_ASSET).
- The audit record includes the name of the person causing the change. It also includes the change date, change type, and the attribute values selected for auditing.
- Filters can be set to limit the records to be audited.

Maximo E-Audit allows audit records to be created for any changed Maximo database table record.

Audit records are created in a separate table from the table being audited.

The name of supplied audit tables is based on the name of the table being audited and is prefixed by the letter a and an underscore. As an example, the asset table has an audit table of A underscore asset.

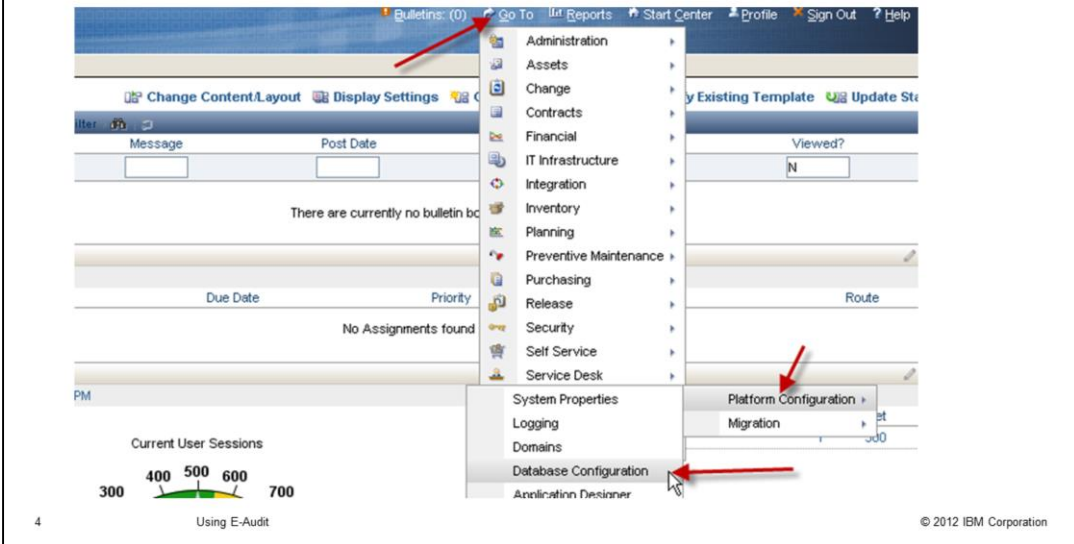
The audit record includes the name of the person making the change, the date of the change, whether it is an insertion, update or deletion, and values for attributes selected for audit.

It is possible to define a filter to restrict the records within a table that is audited.

## Navigate to the database configuration application

Auditing is defined in the Database Configuration application

From the Start Center click **Go To > System Configuration > Platform Configuration > Database Configuration**



E-Audits are setup within the Database Configuration application.

To navigate to the Database Configuration application, from the Start Center, click **Go To**. From the list provided, click **System Configuration, Platform Configuration**, and then choose the **Database Configuration** option.

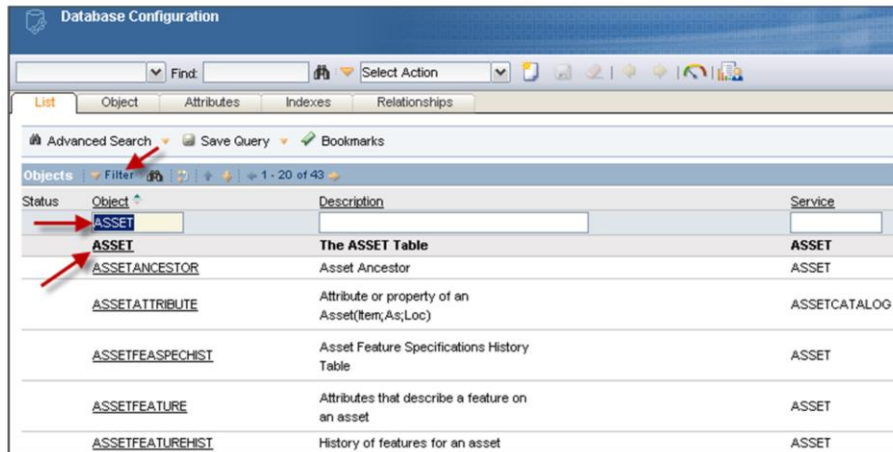
## Selecting tables for auditing

In this example, you set auditing on the ASSET table

In the Database Configuration screen, type **ASSET** into the **Object** field, and press Enter

Note. If the **Object** field does not show, click **Filter**

Next, click the **ASSET Object**



5

Using E-Audit

© 2012 IBM Corporation

In this example, you set auditing for attributes within the ASSET table.

In the Database Configuration screen, type **ASSET** into the **Object** field, and press **Enter**. This action shows all objects that include this string.

If the filter line containing the **Object** field does not initially appear on the **Database Configuration** screen, click the **Filter** option.

When the object list displays, click the **ASSET Object** to open it.

## Creating audit filter statements

Select the **Audit Enabled** check box.

Optionally enter a filter. The filter is an SQL where clause prefixed by a colon.

Example, `:LOCATION='BR200'` will audit records only where LOCATION is equal to BR200

The screenshot shows the 'Database Configuration' interface for the 'ASSET' table. The 'Audit' section is expanded, showing the following configuration:

Field	Value
Audit Enabled?	<input checked="" type="checkbox"/>
Audit Table	A_ASSET
E-audit Filter	:LOCATION='BR200'

Red arrows in the original image point to the 'Audit Enabled?' checkbox and the 'E-audit Filter' text box.

Within the object record for the asset table, click the **Audit Enabled** check box.

Optionally, a filter can be defined. The filter restricts auditing to only those records that match the filter definition. The filter syntax is an SQL where clause that is prefixed with a colon.

In this example, only records within the asset table that have a location of b r 200 cause audit records to be created.

## Selecting audit attributes

Click the **Attributes** tab

Select an attribute

Select the **Audit Enabled** check box

Repeat these actions for all required attributes

Click the **Save** icon

The screenshot shows the 'Database Configuration' window for the 'ASSET' table. The 'Attributes' tab is active, displaying a list of attributes. The 'ASSETNUM' attribute is selected, and its details are shown below. The 'Audit Enabled' checkbox is checked. Red arrows indicate the steps: clicking the 'Attributes' tab, selecting the 'ASSETNUM' attribute, and checking the 'Audit Enabled' checkbox.

Status	Attribute	Description	Type	Length	Scale
▶	ADDSTORE	Add to store?	YORN	1	0
▶	ANCESTOR	Root Parent	UPPER	12	0
▶	ASCFDATE	Displays the relationships that existed with the	DATETIME	10	0
▶	ASSETID	unique id	INTEGER	12	0
▶	ASSETNUM	Asset Number	UPPER	12	0
▶	ASSETTAG	Asset Tag Number	ALN	15	0
▶	ASSETTYPE	The predefined type of this asset.	UPPER	15	0
▶	ASSETUID	Unique Identifier	INTEGER	12	0
▶	AUTOWOGEN	Flag that indicates whether to start the wogen	YORN	1	0
▶	ENNUM	Bin Number (Rotable Asset).	ALN	8	0

Details for ASSETNUM:

Attribute: ASSETNUM  
 Description: Asset Number  
 Type: UPPER  
 Length: 12  
 Scale: 0  
 Required?:

Advanced:

Entity: ASSET  
 Column: ASSETNUM  
 Persistent?:   
 Must Be?:   
 Audit Enabled?:   
 Multilanguage Supported?:

Next, the attributes to be recorded in the audit record can be selected.

Click the **Attributes** tab to show all the attributes available.

Expand an attribute by clicking on the blue triangle to the left of the attribute.

Select the **Audit Enabled** check box to have this attribute included in the audit record.

Repeat the process for all required attributes.

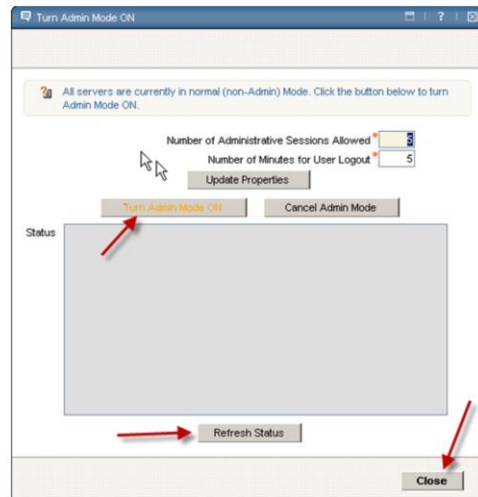
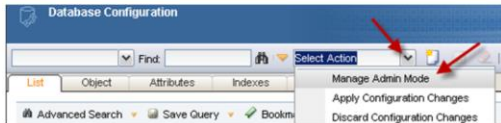
Click the **Save** icon to save the configuration updates.

## Turning on admin mode

- Click the List tab
- Click **Select Actions > Manage Admin Mode**
- Click **Turn Admin Mode ON**

**Note:** Users are not able to access Maximo while admin mode is on

- Click **Refresh Status** for updates
- Click **Close** when admin mode is reported to be on



8

Using E-Audit

© 2012 IBM Corporation

The saved changes now need to be applied for them to take effect.

On the **Database Configuration** screen, click the **List** tab.

From the **Select Action** menu, choose the **Manage Admin Mode** option.

On the **Turn Admin Mode ON** screen that opens, click the **Turn Admin Mode ON** button.

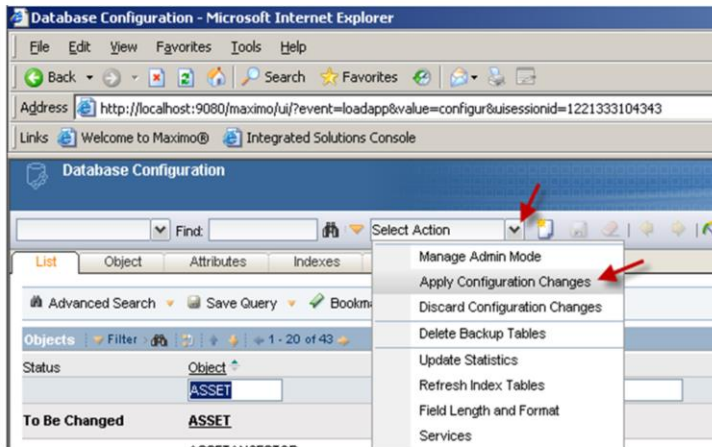
Updates on progress can be obtained by clicking the **Refresh Status** button.

When admin mode is on, click **Close** on the **Turn Admin Mode ON** screen.



## Applying configuration changes

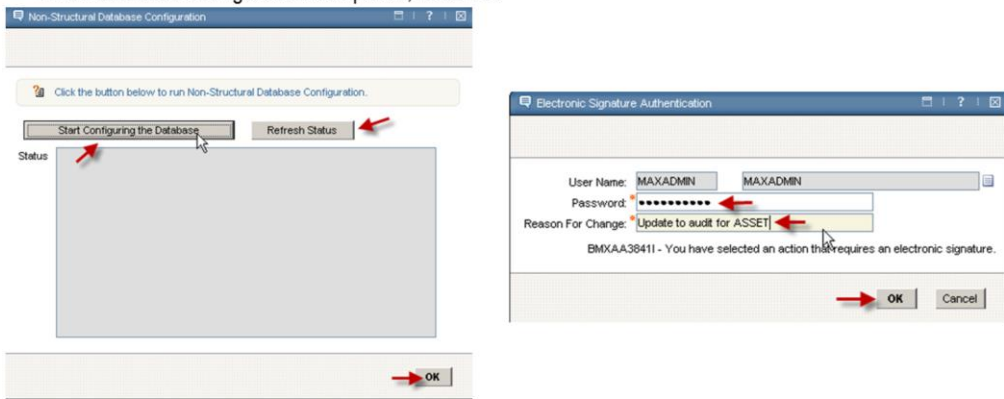
From the **Select Actions** menu, click **Apply Configuration Changes**



From the **List** tab in the **Database Configuration** application, choose the **Apply Configuration Changes** option from the **Select Actions** menu.

## Starting database configuration

- Click **Start Configuring the Database**
- Enter the password, the reason for change, and click **OK**
- Click **Refresh Status** for updates
- When database configuration completes, click **OK**



10

Using E-Audit

© 2012 IBM Corporation

On the **Database Configuration** screen, click the **Start Configuring Database** button.

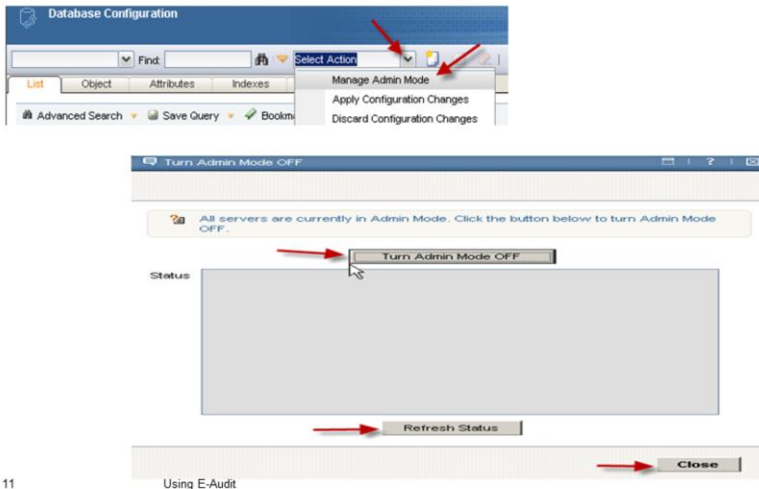
On the **Electronic Signature Authentication** screen, enter the correct password, a reason for the configuration, and then click **OK**.

The database configuration now starts, and updates can be seen by clicking the **Refresh Status** button.

When the database configuration completes, click **OK** to close the **Database Configuration** screen.

## Turning off admin mode

- Click **Select Actions > Manage Admin Mode**
- Click **Turn Admin Mode OFF**
- Click **Refresh Status** for updates
- Click **Close** when admin mode is reported to be on



11

Using E-Audit

© 2012 IBM Corporation

Still on the **Database Configuration** screen **List** tab.

From the **Select Action** menu, choose the **Manage Admin Mode** option.

On the **Turn Admin Mode OFF** screen, click the **Turn Admin Mode OFF** button.

If an **Electronic Signature** screen is presented, enter the password, reason for the change, and click **OK**.

Updates on the progress can be obtained by clicking the **Refresh Status** button.

When admin mode is off, click **OK** to close the **Turn Admin Mode OFF** screen.

When admin mode is on, click **Close** on the **Turn Admin Mode ON** screen.

## Creating A\_ASSET table audit records

- Audit records are created in these scenarios:
  - Changes to ASSET records create an audit record in the A\_ASSET table
  - If a filter was entered, only changes to records matching the filter create an audit record

Changes to records within the **ASSET** table now cause an audit record to be created in the “**A underscore asset**” table.

If a filter was entered in the table definition then audit records are only created for changes to records that match the filter.

## Summary

- Now that you have completed this module, you can perform these tasks:
  - Enable auditing for a table
  - Select attributes to be audited
  - Set filtering for specific records

You have completed the training module. You now can perform these tasks:

- Enable auditing for a Maximo database table
- Select the attributes to be placed in the audit record
- Filter for the records within the database that will cause an audit record to be created

## Trademarks, disclaimer, and copyright information

IBM, the IBM logo, ibm.com, and Maximo are trademarks or registered trademarks of International Business Machines Corp., registered in many jurisdictions worldwide. Other product and service names might be trademarks of IBM or other companies. A current list of other IBM trademarks is available on the web at "[Copyright and trademark information](http://www.ibm.com/legal/copytrade.shtml)" at <http://www.ibm.com/legal/copytrade.shtml>

THE INFORMATION CONTAINED IN THIS PRESENTATION IS PROVIDED FOR INFORMATIONAL PURPOSES ONLY. WHILE EFFORTS WERE MADE TO VERIFY THE COMPLETENESS AND ACCURACY OF THE INFORMATION CONTAINED IN THIS PRESENTATION, IT IS PROVIDED "AS IS" WITHOUT WARRANTY OF ANY KIND, EXPRESS OR IMPLIED. IN ADDITION, THIS INFORMATION IS BASED ON IBM'S CURRENT PRODUCT PLANS AND STRATEGY, WHICH ARE SUBJECT TO CHANGE BY IBM WITHOUT NOTICE. IBM SHALL NOT BE RESPONSIBLE FOR ANY DAMAGES ARISING OUT OF THE USE OF, OR OTHERWISE RELATED TO, THIS PRESENTATION OR ANY OTHER DOCUMENTATION. NOTHING CONTAINED IN THIS PRESENTATION IS INTENDED TO, NOR SHALL HAVE THE EFFECT OF, CREATING ANY WARRANTIES OR REPRESENTATIONS FROM IBM (OR ITS SUPPLIERS OR LICENSORS), OR ALTERING THE TERMS AND CONDITIONS OF ANY AGREEMENT OR LICENSE GOVERNING THE USE OF IBM PRODUCTS OR SOFTWARE.

© Copyright International Business Machines Corporation 2012. All rights reserved.