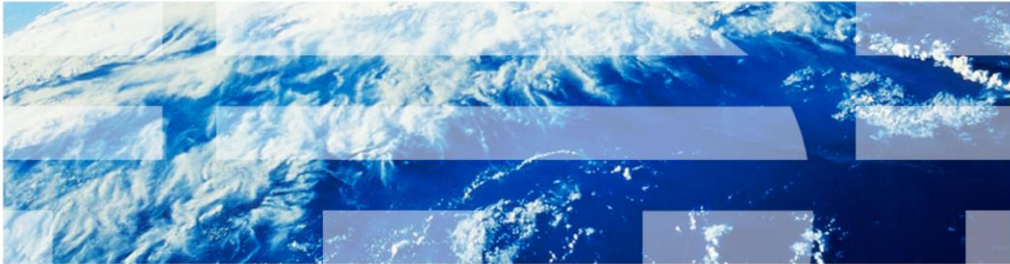


IBM Tivoli Monitoring V6.2.2

Configuring SNMP for the Agentless Monitoring for Windows operating systems



© 2012 IBM Corporation

IBM Tivoli Monitoring V6.2.2, Configuring the SNMP for Agentless Monitoring for Windows operating systems. In this module, you learn the main steps involved in configuring Simple Network Management Protocol (SNMP) for the Agentless Monitoring for Windows operating systems.

Assumptions

Before you proceed, the module designer assumes that you have:

- Knowledge of Tivoli Monitoring
- Basic administration of Simple Network Management Protocol (SNMP) skills
- A Tivoli Monitoring environment that includes a Tivoli Enterprise Monitoring Server, a Tivoli Enterprise Portal Server, and a Tivoli Portal client

The module developer assumes that you have knowledge of Tivoli Monitoring and basic knowledge of the SNMP protocol. You have a functioning Tivoli Monitoring environment that includes these components:

- Tivoli Enterprise Monitoring Server
- Tivoli Enterprise Portal Server
- Tivoli Portal client

Objectives

When you complete this module, you can perform these tasks:

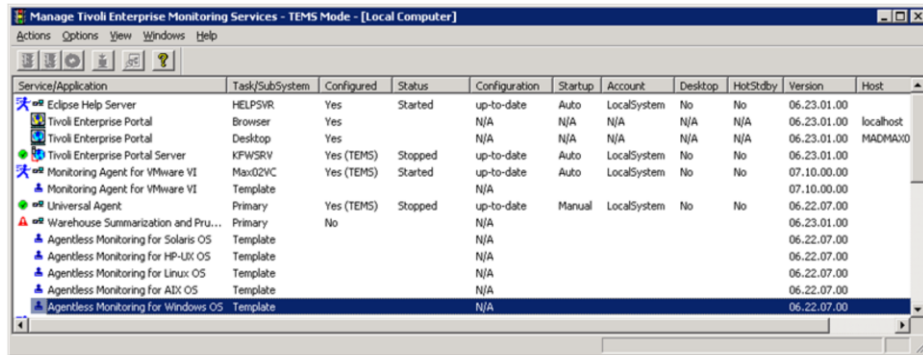
- Configure the Tivoli Agentless Monitor for Windows OS agent with SNMP
- Start the Tivoli Agentless Monitor for Windows OS agent
- View data that is obtained by the Agentless Monitor on the Tivoli Enterprise Portal by way of SNMP

When you complete this module, you can configure and start the Tivoli Agentless Monitor for Windows OS agent and connect to a Tivoli Enterprise Monitoring Server.

You can view the SNMP data collected by the monitoring agent.

(1 of 5) Configuring the agent

- Open the Manage Tivoli Monitoring Services application
- Select the template for the agent type
- Enter the requested information



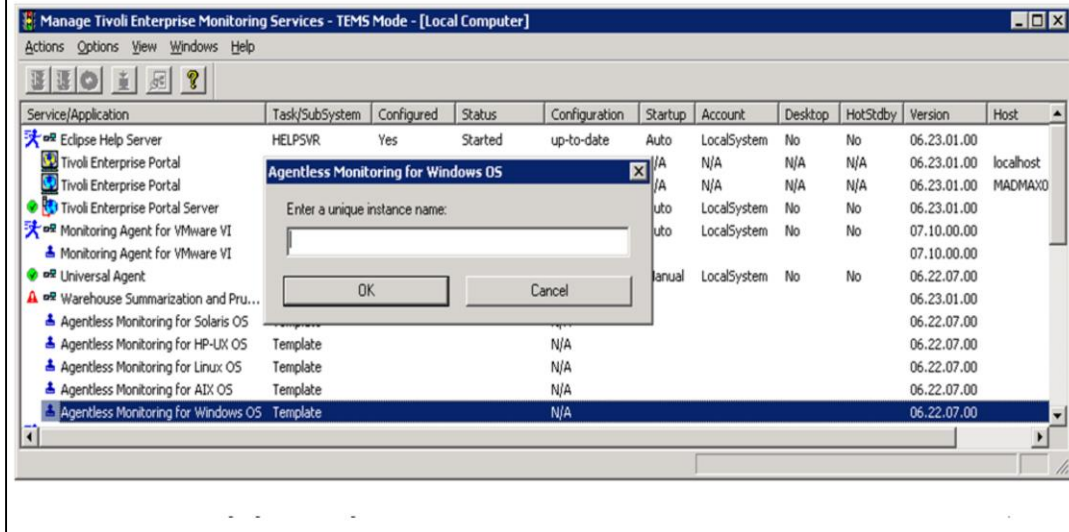
Configuring the SNMP for Agentless Monitor for Windows OS

© 2012 IBM Corporation

After the Tivoli Monitoring Agentless Monitor for Windows agent is installed, the Agentless agent template is available in the Manage Tivoli Monitoring Services application. It is highlighted in the screen capture.

(2 of 5) Configuring the agent

Enter the name of the instance



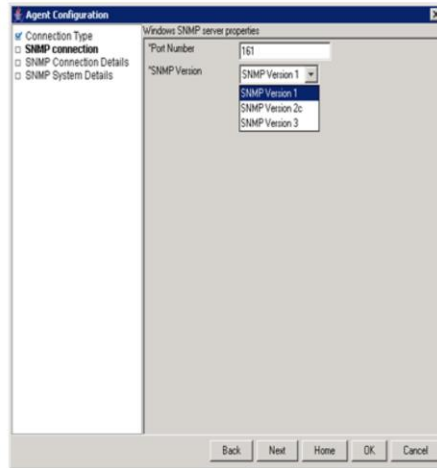
For the Windows OS, you can configure the Agentless agent with one of these four methods:

1. **itmcmd** command.
2. **tacmd** command.
3. In the Tivoli Enterprise Portal GUI, right-click the agentless icon and click the **Configure** option.
4. Manage Tivoli Enterprise Monitoring Services. This is the method shown in this presentation.

When you double-click the **Agentless Template**, the configuration window displays. Enter the instance name of the agent in the configuration window.

(3 of 5) Configuring the agent

Select the version of SNMP on the remote host



Configuring the SNMP for Agentless Monitor for Windows OS

© 2012 IBM Corporation

An Agentless Monitor obtains data from the nodes it monitors with a remote application programming interface, SNMP, *Common Information Model (CIM)*, or *Windows Management Instrumentation (WMI)*. For Windows, there are two choices for **Connection Type**. They are WMI API and SNMP.

Choose **SNMP connection** for **Connection Type**.

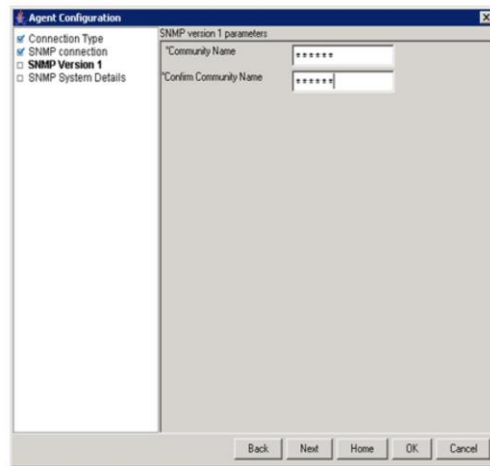
There are three versions of SNMP. They are **SNMPv1**, **SNMPv2c**, and **SNMPv3**.

Choose the **SNMP Version**.

Click **Next**.

(4 of 5) Configuring the agent

Enter the **Community Name**



The screenshot shows a dialog box titled "Agent Configuration" with a tree view on the left and a configuration area on the right. The tree view has the following items:

- Connection Type
- SNMP connection
- SNMP Version 1**
- SNMP System Details

The right pane is titled "SNMP version 1 parameters" and contains two text input fields:

- "Community Name" with a masked value "*****"
- "Confirm Community Name" with a masked value "*****"

At the bottom of the dialog are five buttons: "Back", "Next", "Home", "OK", and "Cancel".

Configuring the SNMP for Agentless Monitor for Windows OS

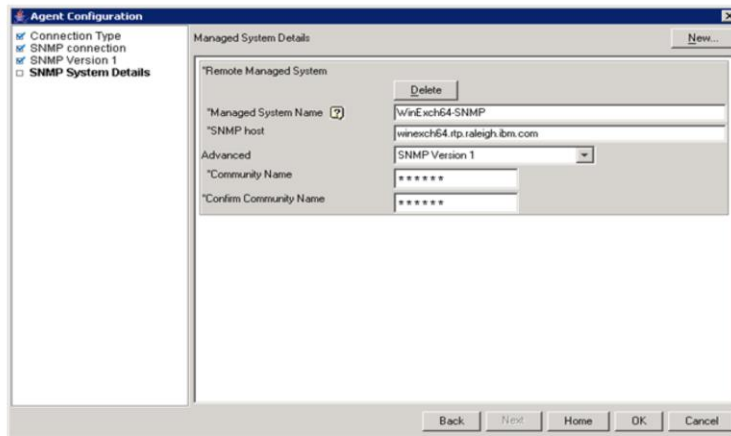
© 2012 IBM Corporation

The community name depends on the version of SNMP used. Enter the **Community Name** and enter it again to confirm.

Click **Next**.

(5 of 5) Configuring the agent

- Click **New**
- Enter details for the remote system



Configuring the SNMP for Agentless Monitor for Windows OS

© 2012 IBM Corporation

This screen contains a button labeled **New**. Click **New** to display the additional configuration information.

The **Managed System Details** screen displays.

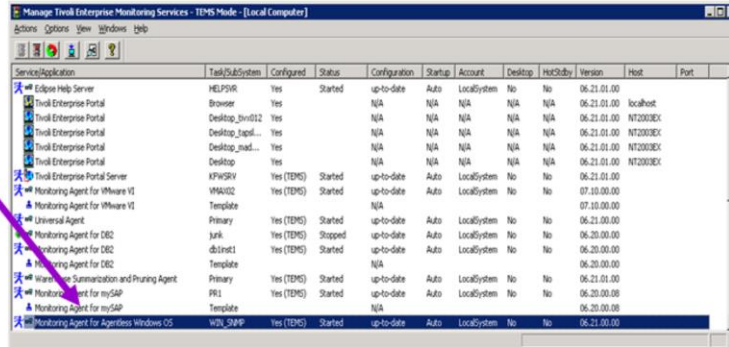
Enter the **Managed System Name**. The **Managed System Name** is the name that is displayed in the Tivoli Enterprise Portal Navigator tree for that host.

You must enter the fully qualified name for the remote SNMP host.

Click **OK**.

Starting the agent

- The new service is in the Manage Tivoli Enterprise Monitoring Services window
- Start the agent



Service/Application	Task/SubSystem	Configured	Status	Configuration	Startup	Account	Desktop	Hot/Stubby	Version	Host	Port
Edge Help Server	HELPSRV	Yes	Started	up-to-date	Auto	LocalSystem	No	No	06.21.01.00		
Tivoli Enterprise Portal	Browser	Yes	N/A	N/A	N/A	N/A	N/A	N/A	06.21.01.00	localhost	
Tivoli Enterprise Portal	Desktop_portal02	Yes	N/A	N/A	N/A	N/A	N/A	N/A	06.21.01.00	NT2003DC	
Tivoli Enterprise Portal	Desktop_portal...	Yes	N/A	N/A	N/A	N/A	N/A	N/A	06.21.01.00	NT2003DC	
Tivoli Enterprise Portal	Desktop_portal...	Yes	N/A	N/A	N/A	N/A	N/A	N/A	06.21.01.00	NT2003DC	
Tivoli Enterprise Portal	Desktop	Yes	N/A	N/A	N/A	N/A	N/A	N/A	06.21.01.00	NT2003DC	
Tivoli Enterprise Portal Server	KPMGRV	Yes (TEMP)	Started	up-to-date	Auto	LocalSystem	No	No	06.21.01.00		
Monitoring Agent for iMware V1	WMA02	Yes (TEMP)	Started	up-to-date	Auto	LocalSystem	No	No	07.20.00.00		
Monitoring Agent for iMware V1	Template								07.20.00.00		
Universal Agent	Primary	Yes (TEMP)	Started	up-to-date	Auto	LocalSystem	No	No	06.21.00.00		
Monitoring Agent for DB2	junk	Yes (TEMP)	Stopped	up-to-date	Auto	LocalSystem	No	No	06.20.00.00		
Monitoring Agent for DB2	dbInst1	Yes (TEMP)	Started	up-to-date	Auto	LocalSystem	No	No	06.20.00.00		
Monitoring Agent for DB2	Template								06.20.00.00		
Warehouse Summarization and Pruning Agent	Primary	Yes (TEMP)	Started	up-to-date	Auto	LocalSystem	No	No	06.21.01.00		
Monitoring Agent for mySAP	PR1	Yes (TEMP)	Started	up-to-date	Auto	LocalSystem	No	No	06.20.00.08		
Monitoring Agent for mySAP	Template								06.20.00.08		
Monitoring Agent for Agentless Windows OS	WDA_SNMP	Yes (TEMP)	Started	up-to-date	Auto	LocalSystem	No	No	06.21.00.00		

Configuring the SNMP for Agentless Monitor for Windows OS

© 2012 IBM Corporation

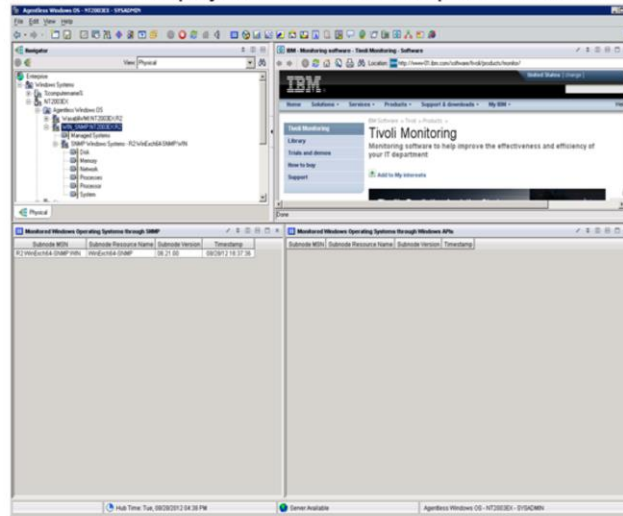
An entry for this agent is displayed in the **Manage Tivoli Enterprise Monitoring Services** window after the agent is successfully configured.

You can see the defined Instance name is present for the newly configured agent.

To start the agent, you can double-click the agent entry.

Verifying the agent in the Tivoli Enterprise Portal client

The **Managed System Name** is displayed in the Tivoli Enterprise Portal client



Configuring the SNMP for Agentless Monitor for Windows OS

© 2012 IBM Corporation

Notice that the defined **Managed System Name** is displayed in the Tivoli Enterprise Portal client.

Summary

Now that you have completed this module, you can perform these tasks:

- Configure the Tivoli Agentless Monitor for Windows OS agent with SNMP
- Start the Tivoli Agentless Monitor for Windows OS agent
- View data that is obtained by the Agentless Monitor on the Tivoli Enterprise Portal by way of SNMP

Now that you have completed this module, you can configure and start the Tivoli Agentless Monitor for Windows OS agent and connect to a Tivoli Enterprise Monitoring Server.

You can view the SNMP data that is collected by the monitoring agent.



Trademarks, disclaimer, and copyright information

IBM, the IBM logo, ibm.com, and Tivoli are trademarks or registered trademarks of International Business Machines Corp., registered in many jurisdictions worldwide. Other product and service names might be trademarks of IBM or other companies. A current list of other IBM trademarks is available on the web at "[Copyright and trademark information](http://www.ibm.com/legal/copytrade.shtml)" at <http://www.ibm.com/legal/copytrade.shtml>

Other company, product, or service names may be trademarks or service marks of others.

THE INFORMATION CONTAINED IN THIS PRESENTATION IS PROVIDED FOR INFORMATIONAL PURPOSES ONLY. WHILE EFFORTS WERE MADE TO VERIFY THE COMPLETENESS AND ACCURACY OF THE INFORMATION CONTAINED IN THIS PRESENTATION, IT IS PROVIDED "AS IS" WITHOUT WARRANTY OF ANY KIND, EXPRESS OR IMPLIED. IN ADDITION, THIS INFORMATION IS BASED ON IBM'S CURRENT PRODUCT PLANS AND STRATEGY, WHICH ARE SUBJECT TO CHANGE BY IBM WITHOUT NOTICE. IBM SHALL NOT BE RESPONSIBLE FOR ANY DAMAGES ARISING OUT OF THE USE OF, OR OTHERWISE RELATED TO, THIS PRESENTATION OR ANY OTHER DOCUMENTATION. NOTHING CONTAINED IN THIS PRESENTATION IS INTENDED TO, NOR SHALL HAVE THE EFFECT OF, CREATING ANY WARRANTIES OR REPRESENTATIONS FROM IBM (OR ITS SUPPLIERS OR LICENSORS), OR ALTERING THE TERMS AND CONDITIONS OF ANY AGREEMENT OR LICENSE GOVERNING THE USE OF IBM PRODUCTS OR SOFTWARE.

© Copyright International Business Machines Corporation 2012. All rights reserved.

© 2012 IBM Corporation