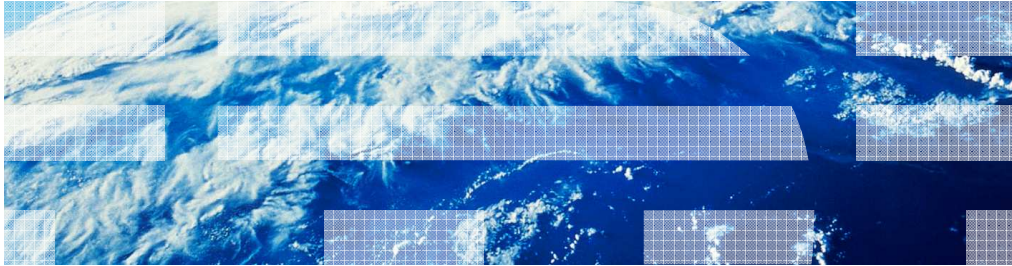


Business Process Management IBM Business Process Manager V8.0

Linking to external sources



© 2012 IBM Corporation

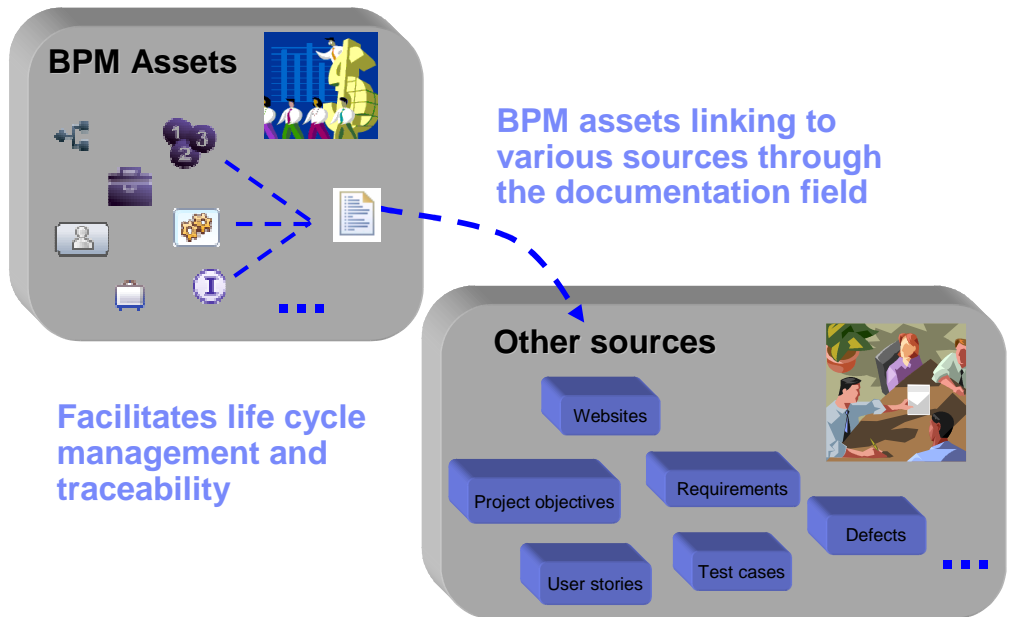
This presentation provides an overview of the new feature that allows linking BPM assets to external sources outside the IBM Business Process Manager environment.

Agenda

- What is “linking to external sources”?
- What BPM assets can be linked to external sources?
- Different types of linking
 - URL linking
 - Content Sources linking

You will first learn about what it means by linking BPM assets to external sources and which BPM assets in Process Designer and Integration Designer can be linked to the external sources. You will then be introduced to two types of linking that are supported in version 8.0 and details of how to establish the linking with an example.

What is linking to external sources?



3

IBM Business Process Manager V8.0 – Linking to external sources

© 2012 IBM Corporation

Often BPM assets can depend upon sources outside of BPM environment, for example, websites, project objectives, change requests, requirements, test cases, etcetera. And when defining the BPM assets, it is important that you are able to add links to these related external sources for traceability.

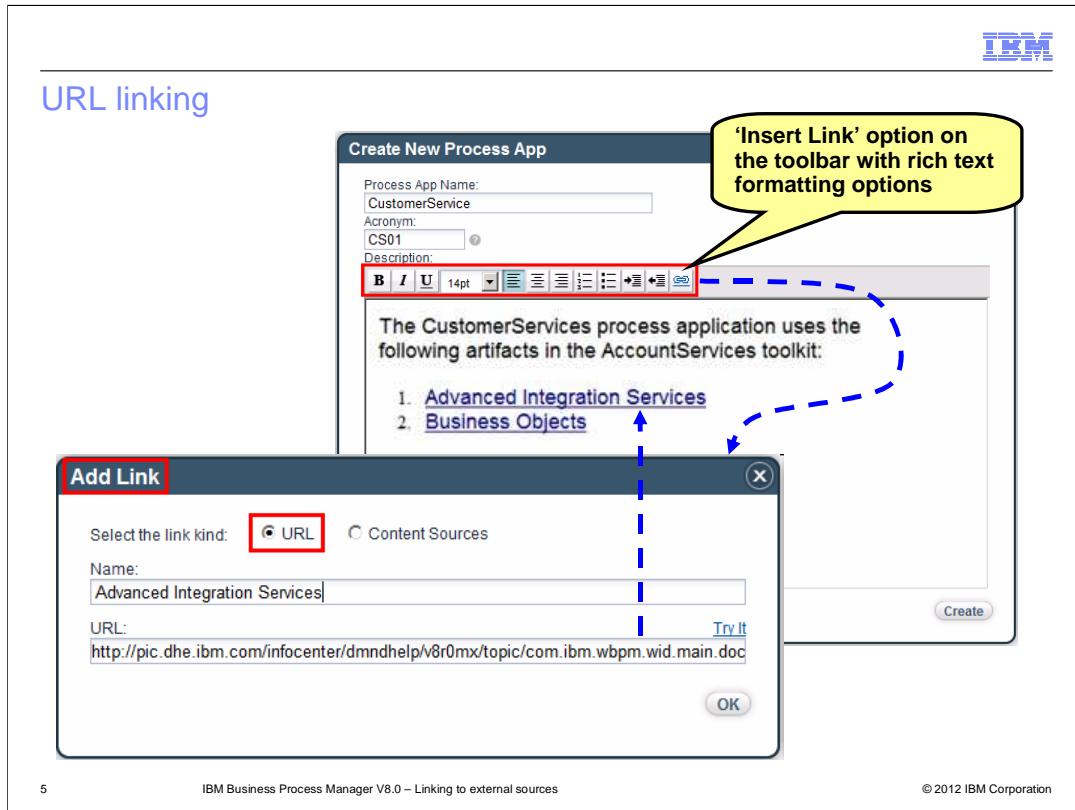
In versions 7.5 and 7.5.1, there is no way to correlate these external sources from within the BPM environment. Version 8.0 allows you to link the BPM assets with external assets using the Documentation field.

BPM assets that can be linked to external sources

- Process applications 
- Toolkits 
- All library items in Process Designer 
- Business Objects in Integration Designer 
- Interfaces in Integration Designer 

The Description field of process apps and toolkits and the Documentation field of library items, business objects and services now support rich text formatting. You can use various font sizes and font styles when adding text in this field. You have an ability to align and indent the text. You can use bullets and numbering.

As part of the rich text, you can also insert links to external sources. The next few slides describe the types of links that you can insert.



You can insert a link for a URL to a website or any document that supports a standard URL format.

The Create New Process App wizard is shown on the slide as an example. The new toolbar is added to the description field with various formatting options.

For library items in Process Designer, an Edit option is provided in the properties view or the overview tab of the editor to launch a separate dialog where you can specify description using rich text formatting.

For Business Objects and services in Integration Designer, an Edit option is provided in the properties view.

When you click the link icon in the toolbar, Add Link dialog is displayed where you can select the URL option and specify the name and an URL to connect to. The description then shows the name as a hyperlink.

All links when clicked are opened in a browser, and so, the behavior you get depends upon however your browser reacts to the link.

The Add Link dialog has a 2nd option for linking called Content Sources the details of which are on the subsequent slides.

Content Sources linking

- Ability to browse for a document in an external product and link to it for life cycle management and traceability
- Uses Open Services for Lifecycle Collaboration (OSLC) standard
 - Ref: <http://open-services.net/>
- BPM tools are OSLC consumers in 8.0
 - Allows unidirectional linking from BPM to external products
- Supports linking to these OSLC providers
 - IBM Rational® Team Concert™ V3.0.1.1 and subsequent fix packs
 - IBM Rational Quality Manager V3.0.1.1 and subsequent fix packs
 - IBM Rational Requirements Composer V3.0.1.1 and subsequent fix packs
 - IBM Design Management V3.0.1 and subsequent fix packs

Inserting a link to a content source is more than just a URL link.

You are given an ability to browse for a document in an external product such as IBM Rational Team Concert, IBM Rational Quality Manager and select one to establish a link to.

Open Services for Lifecycle Collaboration, commonly referred to as OSLC, standard is used to enable this type of linking. OSLC is an initiative to define standards that enable easier and more effective integration between many tools that software and product developers use. Going over OSLC specification is out of the scope for this presentation. You can use the link provided on the slide for details on OSLC.

Version 8.0 supports linking BPM assets to IBM Rational Team Concert, Rational Quality Manager, Rational Requirements Composer and IBM Design Management.

BPM tools are OSLC consumers in version 8.0. That means linking is unidirectional from BPM to external products. Note that this is just the start for life cycle management support somewhat similar to what existed between an earlier product WebSphere® Business Modeler and Rational RequisitePro®.

Content Sources linking – creating registration

Process Center console

Process Apps Toolkits Servers **Admin**

Remote Process Center
Remote Content Source

Create Registration

Register a content source:

Remote Content Source

URL (https://servername:port):
https://swgjazz.ibm.com:8052/jazz/rootservices

Authentication:
Enter a user ID and password with access to this content source. The provided credentials will be used to discover the services provided by the content source.

User ID:
akatti@ca.ibm.com

Password:
.....

Next

Activity Log **Registration**

✓ Enable Registration and Sharing **1**

+ Create Registration **2**

Specify URL for the remote content source

Specify login credentials and click Next

7 IBM Business Process Manager V8.0 – Linking to external sources © 2012 IBM Corporation

To be able to browse documents in an external product, you need to register the product using Process Center console.

The first step is to enable registration on the Process Center that you are working with.

The 2nd step is to create registration. The option Remote Content Source in the Create Registration window allows you to specify a URL to the external product and authentication details.

The slide shows a URL to Rational Team Concert as an example.

Content Sources linking - creating registration

Create Registration

Select a project area to register:

- BPM - IBM Rational Team Concert Work Items
- BPM IQA - IBM Rational Team Concert Work Items
- BPM Support - IBM Rational Team Concert Work Items
- Business Process Manager - IBM Rational Team Concert Work Items**
- Business Process Manager - Sandbox - IBM Rational Team Concert Work Items
- RTC Administration - IBM Rational Team Concert Work Items

Name: Business Process Manager - IBM Rational Team Concert Work Items

Register

Process Center console

Toolkits Servers Admin

Activity Log **Registration**

PC136

Business Process Manager - IBM Rational Team Concert Work Items

Registration was initiated by admin on 3/5/12

Revoke

8 IBM Business Process Manager V8.0 – Linking to external sources © 2012 IBM Corporation

Select project area and click Register

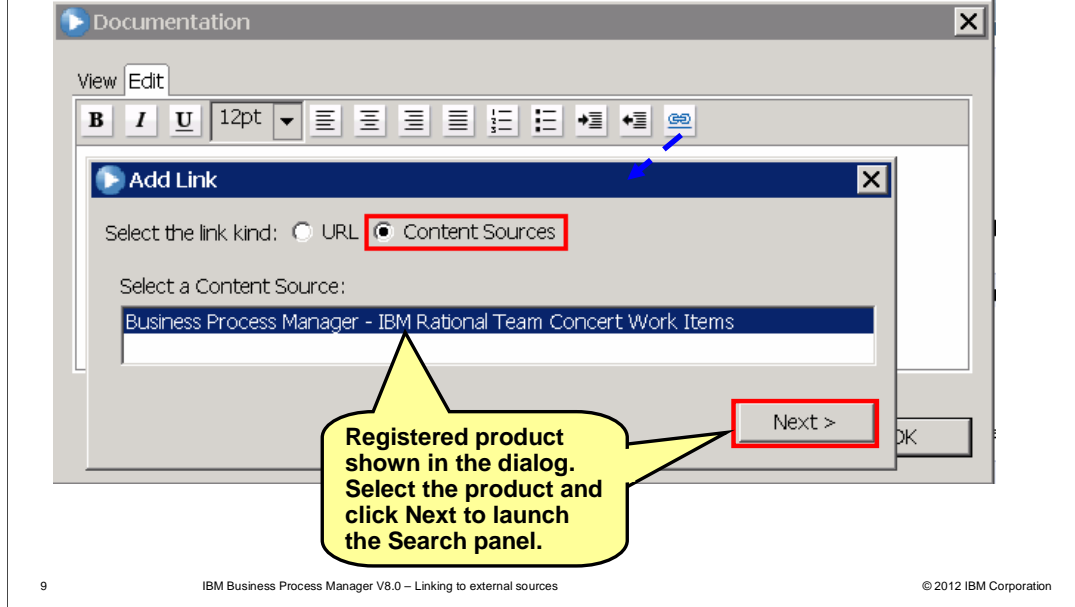
Registered product listed in PC Console. A link can now be established to a document in the listed product

Once the URL is provided, different project areas in Rational Team Concert are listed to select one from. You can select any project area and register. The registered product is then shown in the Process Center console.

Now you are ready to link to the documents in this product.

Content Sources linking – creating a link

Rich text documentation editing window



To create a link to a document in the registered product, you will use the Content Sources option in the Add Link dialog. When this option is selected, the registered product is displayed in the dialog as shown on the slide.

Content Sources linking – Rational Team Concert search panel example

10 IBM Business Process Manager V8.0 – Linking to external sources © 2012 IBM Corporation

Each registered product provides its own search panel. The slide gives an example for Rational Team Concert.

When you select a Search type, for example “Plan Item” as shown on the slide, the dialog displays another list called Type. This list has sub types of the main search type. The final search is performed based on the combination of the sub type selected and the search text specified in the field below.

In this example, “User Story” is selected as a sub type and “AIS” is specified as search text. This results in all the user stories that contain the word “AIS” in the title being displayed in the Matching Work Items area. You can select a user story from this list to link to.

Note: When you select a Search type, if you are not already logged in to the registered content source, you are prompted to login first.

Content Sources linking – description field with a link

Business Process Definition editor – Documentation field

The screenshot shows the Business Process Definition editor for a process named "AISErrorProcess". The interface includes tabs for Overview, Diagram, Variables, Tracking, and Process KPIs. Under the "Common" section, the following information is displayed:

- Name: AISErrorProcess
- Modified: admin (March 1, 2012 12:13:59 PM CST)
- Documentation: [55050: As Bob using PD, I want to define an AIS service that can throw one or multiple errors](#)

An "(Edit)" link is visible next to the Documentation field. A yellow callout box points to the link with the text: "Business Process Definition linked to the user story 55050 in Rational Team Concert".

11

IBM Business Process Manager V8.0 – Linking to external sources

© 2012 IBM Corporation

A link to the selected user story document is displayed in the Documentation field. This is an example of a business process definition that is linked to a Rational Team Concert user story about AIS and error handling.

Summary

- Using the documentation field, you can now link BPM assets to:
 - Websites and different documents that can be accessed using a standard URL format
 - Documents from external products using OSLC standard

- The linking capability allows traceability and life cycle management

To summarize, you can link BPM assets to external sources for traceability through the documentation field. Version 8.0 supports URL linking and linking to the external products using OSLC standard.



Feedback

Your feedback is valuable

You can help improve the quality of IBM Education Assistant content to better meet your needs by providing feedback.

- Did you find this module useful?
- Did it help you solve a problem or answer a question?
- Do you have suggestions for improvements?

Click to send email feedback:

mailto:iea@us.ibm.com?subject=Feedback_about_BPM80_LinkingToExternalSources.ppt

This module is also available in PDF format at: ../BPM80_LinkingToExternalSources.pdf

You can help improve the quality of IBM Education Assistant content by providing feedback.



Trademarks, disclaimer, and copyright information

IBM, the IBM logo, ibm.com, Rational, Rational Team Concert, RequisitePro, and WebSphere are trademarks or registered trademarks of International Business Machines Corp., registered in many jurisdictions worldwide. Other product and service names might be trademarks of IBM or other companies. A current list of other IBM trademarks is available on the web at "[Copyright and trademark information](http://www.ibm.com/legal/copytrade.shtml)" at <http://www.ibm.com/legal/copytrade.shtml>

Other company, product, or service names may be trademarks or service marks of others.

THE INFORMATION CONTAINED IN THIS PRESENTATION IS PROVIDED FOR INFORMATIONAL PURPOSES ONLY. WHILE EFFORTS WERE MADE TO VERIFY THE COMPLETENESS AND ACCURACY OF THE INFORMATION CONTAINED IN THIS PRESENTATION, IT IS PROVIDED "AS IS" WITHOUT WARRANTY OF ANY KIND, EXPRESS OR IMPLIED. IN ADDITION, THIS INFORMATION IS BASED ON IBM'S CURRENT PRODUCT PLANS AND STRATEGY, WHICH ARE SUBJECT TO CHANGE BY IBM WITHOUT NOTICE. IBM SHALL NOT BE RESPONSIBLE FOR ANY DAMAGES ARISING OUT OF THE USE OF, OR OTHERWISE RELATED TO, THIS PRESENTATION OR ANY OTHER DOCUMENTATION. NOTHING CONTAINED IN THIS PRESENTATION IS INTENDED TO, NOR SHALL HAVE THE EFFECT OF, CREATING ANY WARRANTIES OR REPRESENTATIONS FROM IBM (OR ITS SUPPLIERS OR LICENSORS), OR ALTERING THE TERMS AND CONDITIONS OF ANY AGREEMENT OR LICENSE GOVERNING THE USE OF IBM PRODUCTS OR SOFTWARE.

© Copyright International Business Machines Corporation 2012. All rights reserved.