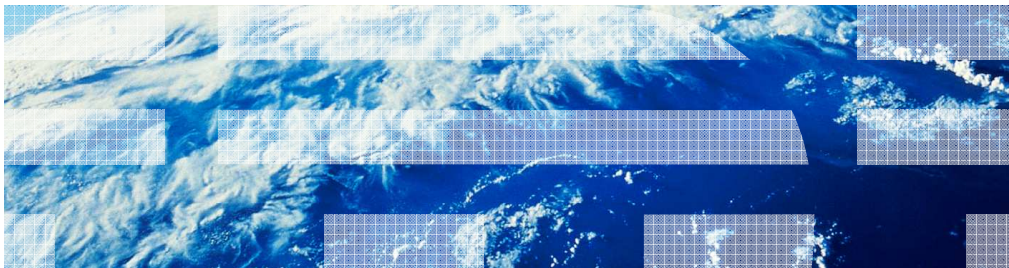

Business Process Management IBM Business Process Manager V8.0

Process Center – Toolkit sharing and search

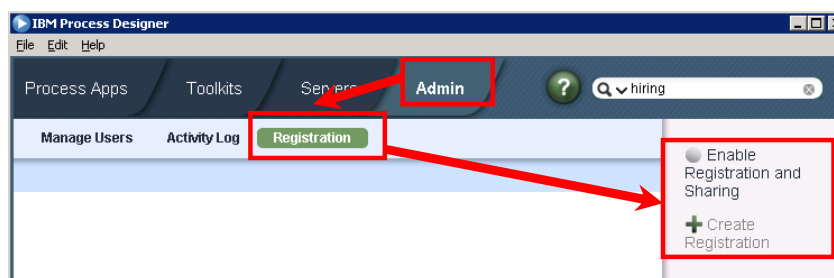


© 2012 IBM Corporation

This presentation provides an overview of the process center sharing and search features.

Process center sharing

- Provides the ability to share toolkits in one process center repository with other Process Centers
- Enable Registration and Sharing – Necessary to identify the process center with name and allowing other process centers access to shared toolkits
- Create Registration – To access shared toolkits in another process center
- Shared toolkit
 - Consuming process center subscribes to the shared toolkit
 - Toolkit and all its dependencies are imported into subscribing process center



2

IBM Business Process Manager V8.0 – Process Center sharing and search

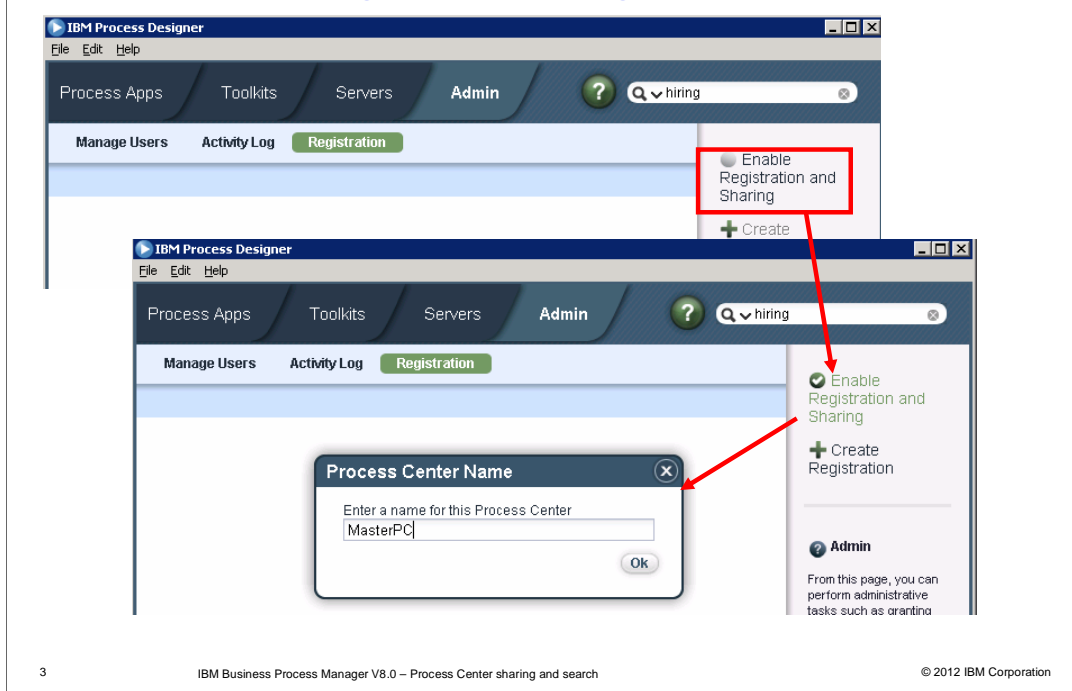
© 2012 IBM Corporation

An author has created a Toolkit of assets that he wants to make available for other process authors in other departments in his organization to consume. The other departments are running separate instances of Process Centers. In prior versions of BPM, the only way to use the toolkit is to email or transfer an export of the toolkit. Distributing the toolkit by email or file also does not provide any traceability so the author can see who is using the toolkit or which versions. If the author updates the toolkit with a critical fix to a service, the consuming author is not aware of the update or the new version that is now available. In V8.0 this problem is addressed by the new process center sharing feature. Using this new feature, you can now share toolkits between process centers.

To share a toolkit, you must register a Process Center with another Process Center. You can also implement security and revoke your registration. Administrators enable the Process Centers for sharing with each other using the “Enable Registration and Sharing” option. The next step is to create an association between the process centers which is accomplished by using the “Create Registration” option. Once these two steps are complete you can now select which toolkit to share and which snapshots in the toolkit are made available for sharing. The steps for toolkit sharing are covered later on in this presentation

The toolkits that are enabled for sharing are now available for the registered process centers to subscribe. Once subscribed, the toolkit is imported into the subscribing process center repository.

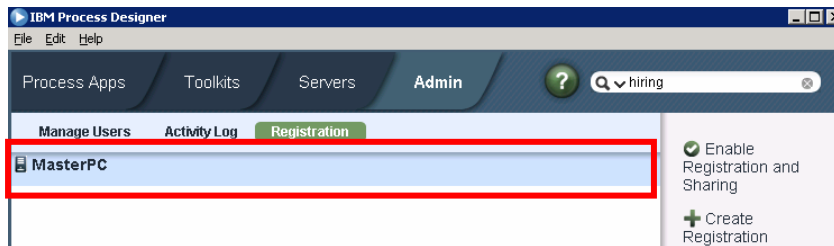
Process center sharing – Enable sharing



This slide shows the process of enabling sharing. Once you click the Enable Registration and Sharing option, you are prompted to enter a name for the process center. That is the name used to identify the process center. You need to do this step in both the sharing process center and the subscribing process centers.

Process center sharing - Enable sharing

- Process Center enabled for sharing



Shown here is the screen capture after you provide a name to the process center.

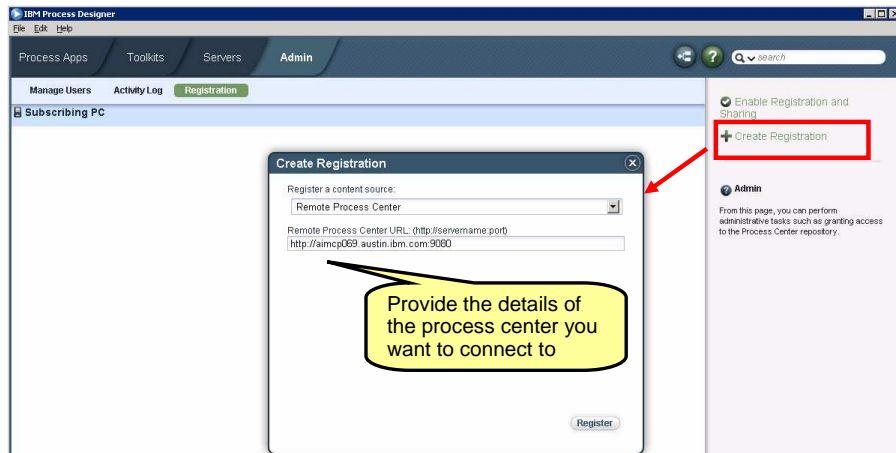
Process center sharing – Create registration

- Create Registration
 - Process to specify the remote process center you want to connect to
 - Supported protocols are http and https
 - If using http → the user name and password used for global security must be identical on both process centers
 - If using https → you must set up a security trust between the participating Process Centers
 - More details on setting up trust at → http://pic.dhe.ibm.com/infocenter/dmndhelp/v8r0mx/topic/com.ibm.wbpm.admin.doc/topics/tcfg_bpm_pc_xcell.html

The next step is the create registration. You need to provide the remote process center URL you want to connect to. The supported protocols are HTTPS (HTTP over secure socket layer) and HTTP. Before specifying the HTTPS protocol, or registering a Process Center with another Process Center in a different cell, you must set up a security trust between the participating Process Centers. For more information, see the *Configuring cross-cell security for IBM Process Center* topic in the information center. If using http, the username and password you provided for security at profile creation time should be the same.

Process center sharing – Create registration

- Create Registration



6

IBM Business Process Manager V8.0 – Process Center sharing and search

© 2012 IBM Corporation

Shown here is a screen capture from the process designer for the create registration step. In this scenario, http protocol is used.

Process center sharing – Create registration



7

Once the registration is complete, you can see that both the process centers are updated to show the association.

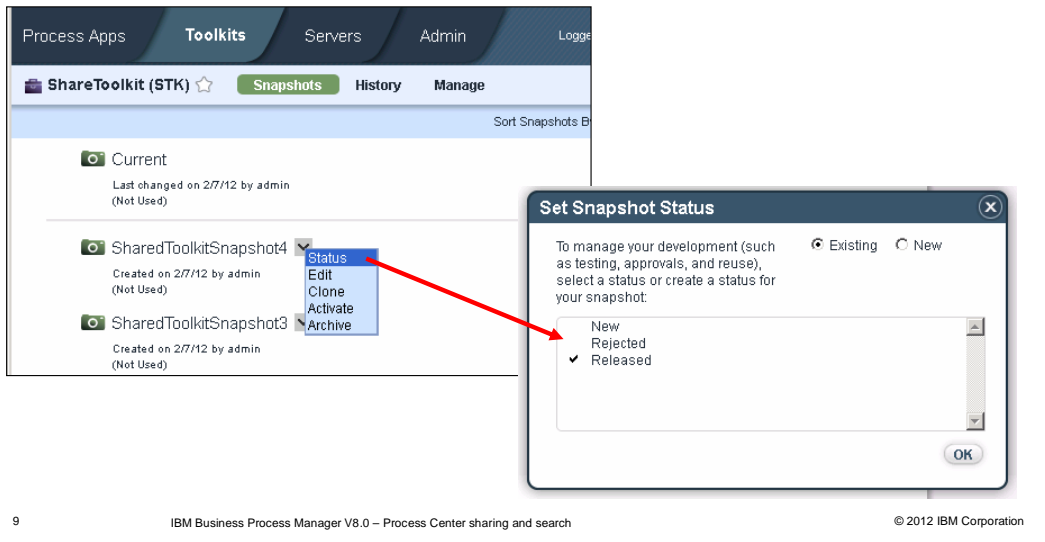
Process center sharing

- Toolkit sharing
 - On Sharing process center
 - Choose which snapshots are shared
 - Enable tool kit for sharing
 - User must have "admin" rights on the toolkit to share
 - Can monitor if the toolkit is being used by any process center (where used)
 - Events logged in the history
 - Shared as read only → subscribers cannot edit the toolkit
 - On Subscribing process center
 - Only those toolkit snapshots enabled for sharing are accessible
 - Can check for updates on subscribed process center
 - All toolkits once subscribed are imported into local repository
 - Events logged in history
- Stop Sharing
 - Stop sharing at toolkit level
- Revoke registration
 - go to Admin > Process Center Registration and select Revoke next to the Process Center name

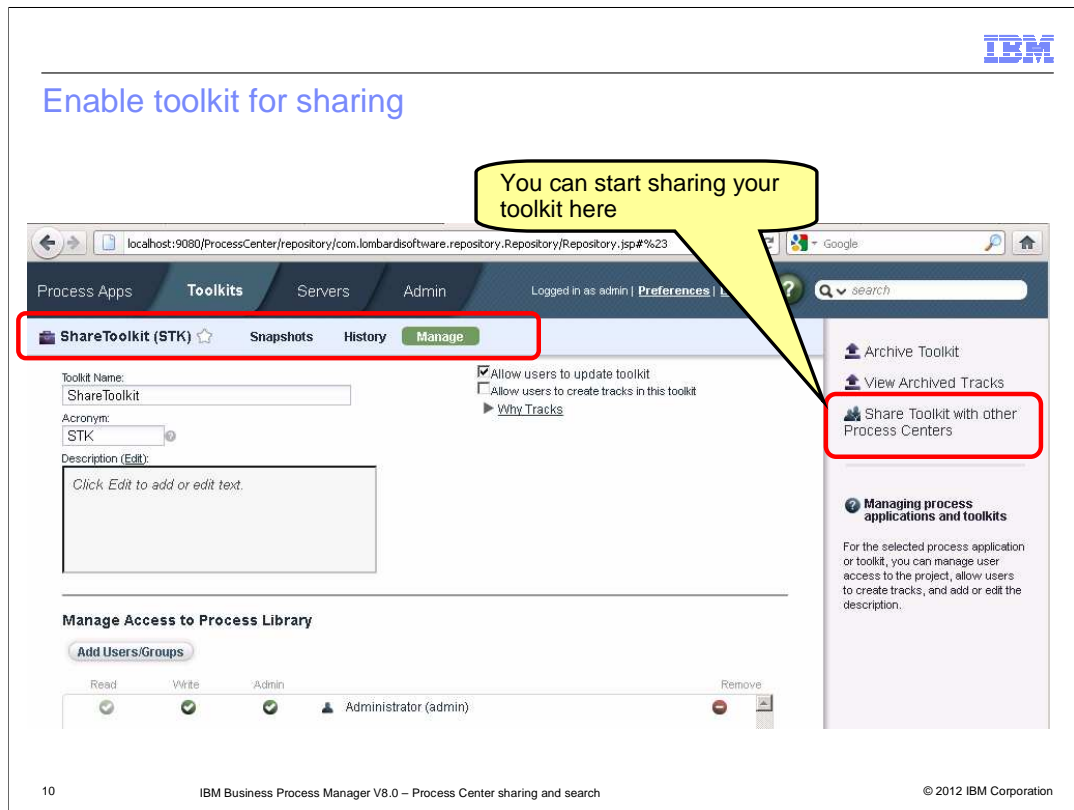
When both Process Centers are registered, the toolkit author can release a toolkit snapshot to be shared. Only an user with administrator rights on the toolkit can share that toolkit. Not all snapshots under a toolkit are shared. You can decide which snapshots are shared or released for subscribing. The toolkit author can also see which subscribers are using the toolkit, and which versions they are using. When the toolkit author updates a toolkit and releases the changes in a new snapshot, the subscriber can view the changes. The subscriber can then decide to update the dependency with the new snapshot. The toolkits are shared as read only so you cannot make any changes to the subscribed toolkit. Any changes need to be made at the process center where you are sharing the toolkit from. You can stop sharing the toolkit at any time using the Stop sharing with other process centers at toolkit scope. Any process centers that have already subscribed to the toolkit will have the toolkit already imported into their local repository so they can continue to use the toolkit in their process apps. They just cannot get any updates made at the sharing process center until sharing is enabled and the updated snapshots are released for sharing. You can revoke the registration between the process centers by going to Admin tab and in the registration sub tab select to revoke the registration with a specific process center. The toolkits that you share are available to be subscribed by other registered process centers using the search feature. More details on how to use search to subscribe are presented later on in this presentation

Choose which toolkit snapshots can be shared

- Only the toolkit snapshots marked as released are available to subscribing process centers



Before a toolkit can be enabled for sharing, at least one snapshot under the toolkit should be marked as released. You can mark a snapshot as released by going to the toolkit snapshot view and setting the status of the snapshot to “released”. Released status indicates that you are ready to share this snapshot with any registered process centers. Only the toolkit snapshots marked as released are available to subscribing process centers

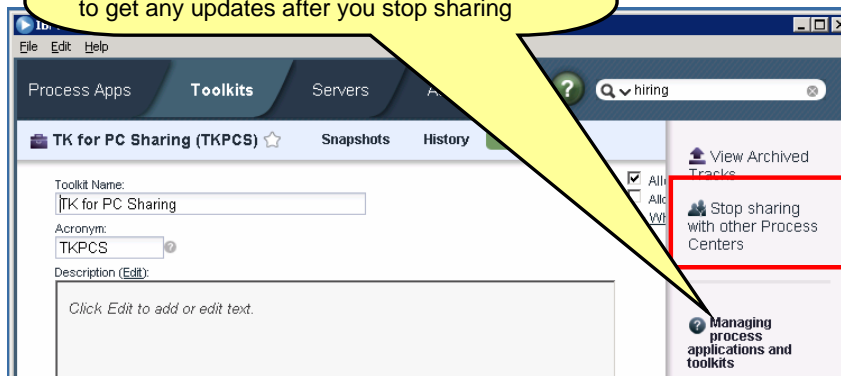


You cannot share a the toolkit until one of its snapshots status is set to released. Once a snapshot of a toolkit is marked as released, you can then click the manage tab to enable sharing of the toolkit status by clicking on the “Share Toolkit with other Process Centers”. If at least one of the snapshots is not marked as released, the “Share Toolkit with other Process Centers” option is disabled.

Disable toolkit sharing

You can stop sharing your toolkit here.

Any process centers that subscribed to this toolkit will still be able to use this toolkit as it is imported locally into their But they are not able to get any updates after you stop sharing



You can choose to stop the sharing of a toolkit at anytime using the Stop sharing with other process centers. Use the “Stop sharing the toolkit with other process centers” option available under the manage tab of the toolkit. Thing to note here is any process centers that already subscribed to this toolkit will still have the toolkit available from their local repository. They just wont be able to get any updates from the sharing process center until sharing is enabled again.

Check for updated toolkit snapshots

- Once subscribed you can check for updates

The screenshot displays the IBM Business Process Manager interface. At the top, there are navigation tabs for 'Process Apps', 'Toolkits', 'Servers', and 'Admin'. Below these, there are links for 'Preferences', 'Logout', and a search bar. The main content area is titled 'ShareToolkit (STK)' and has sub-tabs for 'Snapshots', 'History', and 'Manage'. The 'Snapshots' tab is active, showing a list of snapshots. The first snapshot is 'Current', with a sub-menu containing 'Check for Updates' (highlighted with a red box), 'Export', and 'Refresh'. Below it are two other snapshots, 'SharedToolkitSnapshot4' and 'SharedToolkitSnapshot3', each with a sub-menu containing 'Export' and 'Refresh'. On the right side, there is a sidebar with a '+ Create New Snapshot' button and a 'Snapshots' section with a description: 'A snapshot captures the state of the library items within a process application or toolkit at a specific point in time. Snapshots usually represent a milestone or are used for playbacks or for installation.'

You can check for any updates to the subscribed toolkit by using the “Check for updates” option in the toolkit snapshots view. If the toolkit is still enabled for sharing on the sharing process center and if a new snapshot was marked as released, this action will result in importing the new snapshot into the subscribing process center.

Event logging

- From subscribing process center

Process Apps Toolkits Servers Admin | Preferences Logout ?

ShareToolkit (STK) Snapshots History Manage

SharedToolkitSnapshot4 was just discovered by admin on 2/7/12 at 7:39:59 PM
[SharedToolkitSnapshot4](#) modified in Main by admin on 2/7/12 at 7:39:59 PM
[SharedToolkitSnapshot4](#) modified in Main by admin on 2/7/12 at 7:39:59 PM
[SharedToolkitSnapshot4](#) modified in Main by admin on 2/7/12 at 7:39:59 PM
ShareToolkit was manually checked for updates by admin on 2/7/12 at 7:39:57 PM
SharedToolkitSnapshot3 was just discovered by admin on 2/7/12 at 7:37:46 PM
[SharedToolkitSnapshot3](#) modified in Main by admin on 2/7/12 at 7:37:47 PM
[SharedToolkitSnapshot3](#) modified in Main by admin on 2/7/12 at 7:37:47 PM
[SharedToolkitSnapshot3](#) modified in Main by admin on 2/7/12 at 7:37:46 PM
ShareToolkit was manually checked for updates by admin on 2/7/12 at 7:37:42 PM
ShareToolkitSnapshot from ShareToolkit was just added to SamplePA as a dependency by admin on 2/7/12 at 5:07:09 PM
SharedToolkitSnapshot2 was just discovered by admin on 2/7/12 at 4:58:59 PM
[SharedToolkitSnapshot2](#) modified in Main by admin on 2/7/12 at 4:58:59 PM

Information related to the shared toolkits can be monitored on the sharing process center

13 IBM Business Process Manager V8.0 – Process Center sharing and search © 2012 IBM Corporation

You can view information about a toolkit that you share with other Process Centers. For example, you can determine the number of applications or toolkits that use the toolkit and which Process Centers are using the toolkit. All this information is logged in the History tab of the toolkits. Also in the sharing process center, you can look at the where used field to see what other process centers are using this toolkit.

Process center search

- Global Search option replaces the search at various levels before in previous versions
- Search is always visible in the top right corner of Process Center.
 - Search does not limit scope based on the tab you are in from process center.
- Search results limited to the components contained within the Process Applications or Toolkits the author has access to
- Support the use of logical expressions in search
 - http://pic.dhe.ibm.com/infocenter/dmndhelp/v8r0mx/topic/com.ibm.wbpm.admin.doc/topics/tsearch_reuse_assets.html
- Returned results include artifact name, tags, or description that contain the matching keywords.
- Can be filtered based on component type
- Can search in local and remote process center repositories
 - When searching on remote only the shared toolkit artifacts matching the keyword are returned

In BPM V7.5 search was available in several Process Center views with the scope of results limited to assets in that view. In BPM V8.0 it is replaced with a global search field. Global Search option replaces the search at various levels available before in previous versions. You can find assets, such as toolkits, process applications, services, or business objects faster using specific syntax or tags.

The search looks for the text that is entered in the asset name, description or documentation, type, and tags. To identify reusable assets, you can use the Public tag. For more information, see *Tagging library items* in the information center. You can also use logical expressions in your search. More information can be found on the information center.

Process center search

Process Apps Toolkits Servers Admin

Q Sta

< Back

Search Results for Sta

Integration Designer (2)	Standard Process AIS (Advanced Integration Service) found in Request Application Modified by admin on Jan 18, 2012 2:43:46 PM.	Open in Designer
Advanced Integration Services (1)		
Business Objects (1)	SQLParameter (Business Object) found in System Data Modified by admin on Jan 18, 2012 4:34:20 PM. Tags: Database A SQLParameter is used with a SQLStatement to describe the parameter value, type, and mode information for used with parameterized SQL statements.	Open in Designer

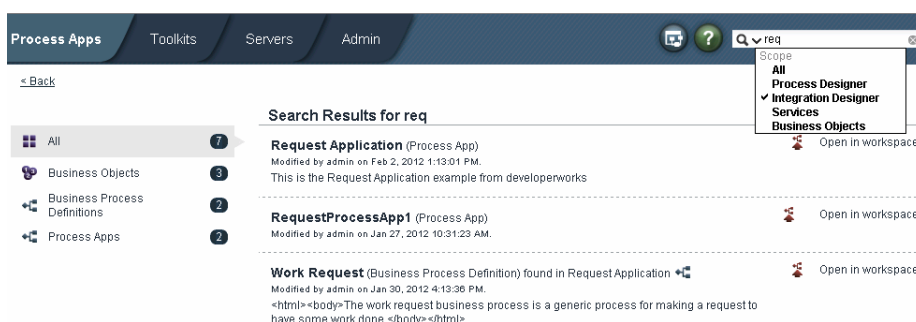
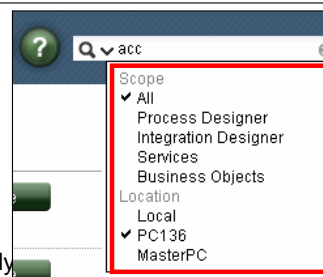
Displaying all 2 items. (1.672 seconds)

15 IBM Business Process Manager V8.0 – Process Center sharing and search © 2012 IBM Corporation

Shown here is a sample search in the process center. You can see the results returned. The search looks for the text that is entered in the asset name, description or documentation, type, and tags.

Process Center search

- Search scope and returned results
 - **All** → all metadata specified for search.
 - **Process Designer** → only items PD can open directly.
 - **Integration Designer** → only items ID can open directly.
 - **Business Objects** → just Business Objects.
 - Can also search on remote repositories using the Location filter



You can select the scope in which the keyword is used to search in the process center repository. Process Center has three essential contexts (Browser, Process Designer and Integration Designer). The context from which search is used effects its scope and behavior within the search results--"open in [tool]" being the primary example. Shown here is an example with scope set to Integration designer. You can see the search results that can be opened in Integration Designer identified by "Open in workspace" at the end of the search result. You can also search ate business object and services scope.

Location is another filter that you can use when searching. You can search in the local repository or on a remote process center repository. Any process centers that are registered for sharing are available under the location filter. When the scope is set to a remote process center, only those toolkit assets that are shared are searchable.

Process center search and sharing

- Any returned results from the remote process center are available for subscription

The screenshot shows the IBM Process Designer Admin console. The search bar contains 'acc'. The search results are as follows:

Artifact Name	Location	Update Info	Action
ACCTSS02 (Snapshot) found in ACCT Kit	Remote	Last updated on 3/6/12 1:03 PM by admin.	Subscribe
ACCTSS04 (Snapshot) found in ACCT Kit	Remote	Last updated on 3/6/12 1:00 PM by admin.	Subscribe
AccountInfo (Business Object) found in ACCT Kit	Remote	Last updated on 2/28/12 1:37 PM by admin.	Subscribe

A callout box points to the 'Subscribe' button for the 'AccountInfo' artifact, containing the text: "Use the subscribe option to import the artifact with its dependencies into local repository".

Page number: 17
 IBM Business Process Manager V8.0 – Process Center sharing and search
 © 2012 IBM Corporation

When the location filter is set to a remote process center, you can navigate to the asset that you searched for, read its documentation, open it in the appropriate tool, and subscribe to the toolkit or process application that contains the asset that you want to use. When you subscribe, the toolkit containing the asset and not just the asset is imported into the local repository.

Summary

- Process center sharing
 - How to enable sharing and create registration between process centers
 - How to enable a toolkit for sharing and select snapshots for sharing
 - Event logging on sharing and subscribing process center
- Process center search
 - Enhanced global search capability
 - Search to reuse existing resources
 - Search remote repositories
 - Various filters available for searching
 - How to subscribe to assets from remote repository using search

In this presentation you were provided information about two features in Business Process Manager version 8, Sharing toolkits between process centers and the global search. Information on how to enable sharing, registration and how to mark a toolkit snapshot as released for sharing along with other details like event logging. Information on the global search feature and the various filters and how to reuse shared assets from remote process center using search are discussed



Feedback

Your feedback is valuable

You can help improve the quality of IBM Education Assistant content to better meet your needs by providing feedback.

- Did you find this module useful?
- Did it help you solve a problem or answer a question?
- Do you have suggestions for improvements?

Click to send email feedback:

[mailto:iea@us.ibm.com?subject=Feedback about BPM80 Lifecycle Search Share.ppt](mailto:iea@us.ibm.com?subject=Feedback%20about%20BPM80%20Lifecycle%20Search%20Share.ppt)

This module is also available in PDF format at: [../BPM80 Lifecycle Search Share.pdf](..../BPM80_Lifecycle_Search_Share.pdf)

You can help improve the quality of IBM Education Assistant content by providing feedback.



Trademarks, disclaimer, and copyright information

IBM, the IBM logo, and ibm.com are trademarks or registered trademarks of International Business Machines Corp., registered in many jurisdictions worldwide. Other product and service names might be trademarks of IBM or other companies. A current list of other IBM trademarks is available on the web at "[Copyright and trademark information](http://www.ibm.com/legal/copytrade.shtml)" at <http://www.ibm.com/legal/copytrade.shtml>

THE INFORMATION CONTAINED IN THIS PRESENTATION IS PROVIDED FOR INFORMATIONAL PURPOSES ONLY. WHILE EFFORTS WERE MADE TO VERIFY THE COMPLETENESS AND ACCURACY OF THE INFORMATION CONTAINED IN THIS PRESENTATION, IT IS PROVIDED "AS IS" WITHOUT WARRANTY OF ANY KIND, EXPRESS OR IMPLIED. IN ADDITION, THIS INFORMATION IS BASED ON IBM'S CURRENT PRODUCT PLANS AND STRATEGY, WHICH ARE SUBJECT TO CHANGE BY IBM WITHOUT NOTICE. IBM SHALL NOT BE RESPONSIBLE FOR ANY DAMAGES ARISING OUT OF THE USE OF, OR OTHERWISE RELATED TO, THIS PRESENTATION OR ANY OTHER DOCUMENTATION. NOTHING CONTAINED IN THIS PRESENTATION IS INTENDED TO, NOR SHALL HAVE THE EFFECT OF, CREATING ANY WARRANTIES OR REPRESENTATIONS FROM IBM (OR ITS SUPPLIERS OR LICENSORS), OR ALTERING THE TERMS AND CONDITIONS OF ANY AGREEMENT OR LICENSE GOVERNING THE USE OF IBM PRODUCTS OR SOFTWARE.

© Copyright International Business Machines Corporation 2012. All rights reserved.