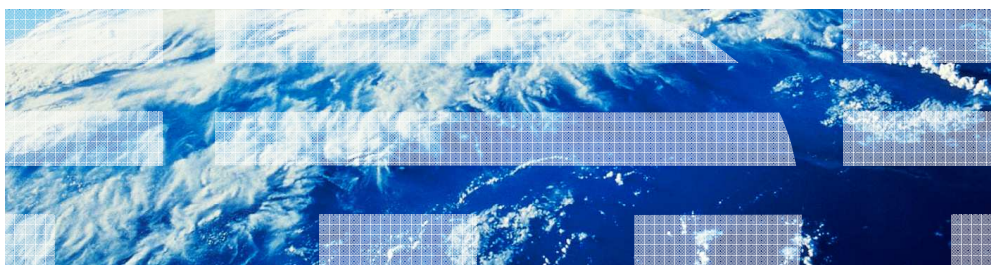


# IBM Business Process Manager V8.0

## Installation

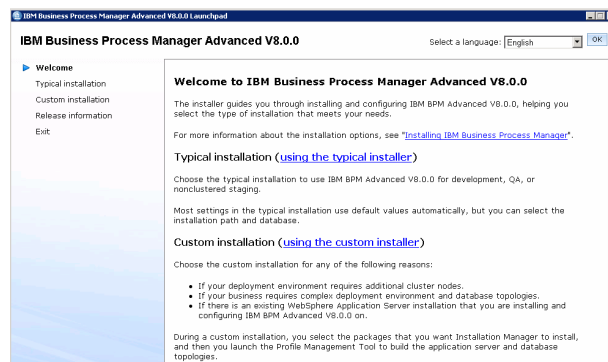


© 2012 IBM Corporation

This presentation provides an overview of the new features and enhancements made to the IBM Business Process Manager V8.0 installation. This presentation only covers the changes made to installation in V8.0. The various packages available for installation and the typical, custom and silent installation procedures are covered in the V7.5 presentation and still apply to V8.0

## Installation

- Product version dependencies
  - Installation manager V1.5.2
  - WebSphere Application Server V8.0.0.3
  - DB2® Express® V9.7.0.4
- IBM Business Process Manager V8.0 can be installed using
  - Typical Installation through launchpad
  - Custom Installation through launchpad/Installation Manager
  - Silently using Installation Manager



2

© 2012 IBM Corporation

Shown here in the slide are the versions of various components and products that are available for installation with IBM BPM V8.0 . Installation Manager V1.5.2 is installed or is updated to V1.5.2 if it is already installed . WebSphere Application Server V8.0.0.3 is installed. IBM DB2 Express V9.7.0.4 is the also packaged and can be installed with IBM BPM V8.0.

You can install the software interactively from the launch pad program, invoke installation manger graphical user interface or silently by running Installation Manager in silent installation mode. In silent mode, the installation wizard does not display a graphical interface, but reads your responses from a response file. You can see the options available through launchpad here on this slide. Details about typical, custom and silent installation are covered in the V7.5 installation overview presentation.

## What is new in V8.0 for installation, configuration

- Update launchpad and IBM BPM V8.0 to the latest level during typical installation
- Additional DB2 username, password checks, validations
- Database configuration changes for BPM standard profile to support business space
- Tagging an installation to identify production/non-production usage
- Support for Profile Management Tool on 64 bit systems

The rest of the presentation covers the details on the changes made to the various installation types in V8.0. Shown on this slide are some of the important changes made to the installation procedure.

## Update the product during typical installation

- Option to update launchpad, WebSphere Application Server and IBM Business Process Manager with any available fixes
  - Checks live link for any updates on launch
  - Option to update offline using local repositories

**Select database configuration**

Select a database configuration. If you install an embedded DB2 Express database, the database will be fully configured and ready to use.

Install an embedded DB2 Express database

Use an existing database (DB2, MSSQL, or Oracle)

**Password Required**

Credentials are required to connect to an IBM service repository. Cancel to proceed without accessing an IBM service repository.

User Name

Password

Login Cancel

The typical installation installs the software and configures a stand-alone profile. You do not need to create a profile later using the Profile Management Tool or `manageprofiles` command. When using the launchpad, if you are connected to the Internet, the typical installation upgrades your product to the latest refresh pack and interim fix level automatically. You are prompted to enter the credentials to connect to the repository and check for these updates. If any updates are found, in the typical installation path, these updates are applied to the product automatically. You also have the option to update the launchpad and the BPM using local repositories. Information on this is covered in the next slide.

## Offline updates

- Download the ifixes, refresh packs
- Create a file bpm\_updates.properties file under USER\_HOME directory
  - Example: C:\Documents and Settings\Administrator\
  - Provide the path to the downloaded repositories
    - Allowed prefixes are **ifix**, **fixpack**, and **launchpad**
    - prefix must be followed by a dot
      - name after the prefix and the dot can be anything you want
  - **Example:** *ifix.1=C:\download\ifixes*  
*fixpack.2=http://internalserverurl/fixpack*  
*fixpack.3=C:/download/fixes*  
*launchpad.1=C:/download/launchpad\_updates*  
*ifix.bpm=C:\download\bpm\ifixes*

If you want these upgrades to be installed from a local directory, or choose specific fixes, you can use a properties file to tell the Installation Manager where to find the upgrades and which upgrades to install.

Download, and extract if needed, any latest refresh pack and interim fixes for IBM BPM V8.0 that you want to apply. Create a file named bpm\_updates.properties files under your USER\_HOME directory. Shown on this slide is an example of the USER\_HOME from Windows operating system. But depending on what windows version it can be a different path. You will provide the information related to the downloaded interim fixes and refresh packs in this file. You should have read/write access to the folders specified in the bpm\_updates.properties file.

You can use three prefixes: ifix, fixpack, and launchpad to identify the fix types and what does it apply to. ifix and fixpack apply to the IBM BPM product and launchpad tag is used to identify fixes for launchpad code. Each prefix must be followed by a dot. The part of the name after the prefix and the dot can be anything you want, which enables you to point to multiple locations for ifixes, fixpacks, and launchpad upgrades. The locations can be either local directories or URLs. The slide shows some examples on how to use this prefixes.

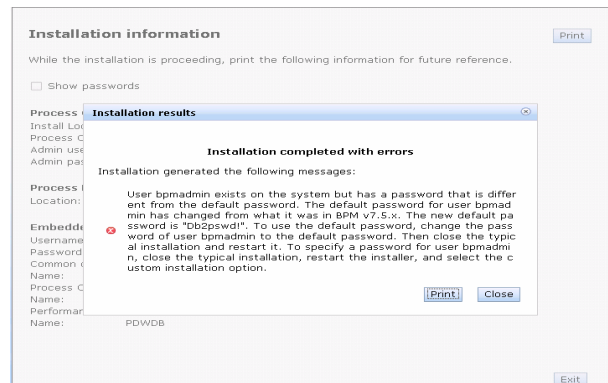
## DB2 Server installation - Password compliance and check for old instance data

- During Typical install
  - Password checking
    - New user
      - Check to make sure the default password Db2pswd! matches the windows security policy
    - Existing user
      - Make sure the default password matches the existing user password
      - Default password in V8.0 is different than in V7.5
      - If not either use custom install to specify the right password or change existing password to **Db2pswd!**
  - Existing DB2 instance data
    - Either rename the folder or delete and relaunch typical install
  - DB2 port
    - Make sure to pass the right DB2 port used at install time to the script to create profile

In V7.5 of the BPM, the default username and password used for the DB2 are **bpmadmin** and **bpmadmin1**. This password in some cases was not compliant with the security policies defined. This resulted in the BPM installation to fail. In V8.0, additional checking is done during installation to make sure the password is compliant with the security policy. In V8.0 the default password in typical installation path when installing DB2 server is **Db2pswd!**. If you installed the BPM V7.5 and chose to install DB2, the **bpmadmin** username already exists on your system with the default password **bpmadmin1** even after uninstalling BPM V7.5. For cases where there is an existing **bpmadmin** user, launchpad checks to for an existing user and if that user's password is **Db2pswd!**. If not, you are prompted to either delete the existing user or change the existing user's password to **Db2pswd!** Before proceeding with installation. If you want to use the existing password, use the custom installation path as in typical installation path, when installing DB2 there is no option to provide DB2 username and password.

## DB2 Express installation - Password compliance and check for old instance data

- Message for a case where password you provided did not match with default password for Db2 user – Db2pswd!



Shown on this slide are the messages you will see for a case when you have an existing bpmadmin user on your system and the password is different than Db2pswd!.

## DB2 Express server installation - Password compliance and check for old instance data

- During Typical install
  - Existing DB2 instance data
    - Either rename the folder or delete and relaunch typical install
    - Message for existing instance data
      - *An earlier instance exists in drive where DB2 is being installed/BPMINST. Either delete or rename this folder. Press "Re-Validate" button once you have taken these steps*
  - DB2 port
    - Make sure to pass the right DB2 port used at install time to the script to create profile

When you uninstall BPM V7.5, if DB2 Express was installed with the product the DB2 instance folder was not deleted. This will result in issues when you reinstall the product and use the same database names for profile creation. As the leftover instance contains the database folders with same names, the product install will fail. In V8.0, launchpad checks to see if there is an existing DB2 instance folder and would warn you to delete the folder or move it to a different location before the installation is started. This slide lists the message you would see in case an existing DB2 instance folder was detected.

When the default DB2 port (50000) was already in use, the installer would configure DB2 Express to use the non default port. But in V7.5 the profile creation would fail as the default port was used when creating a profile during profile creation. This issue is resolved in V8.0 by making sure the right port is passed to the profile creation script during typical installation.



## DB2 Express server installation - Password compliance and check for old instance data

- During custom installation
  - no default password provided for the users in the Installation Manager panels
  - option to use existing DB2 fenced and administrative server users

The screenshot shows the 'Install Packages' window with the 'Common Configurations' tab selected. Under 'DB2 Credentials', there are three sections for user configuration:

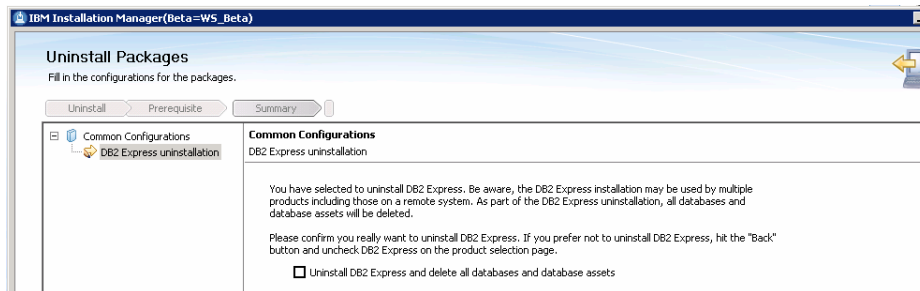
- DB2 instance user:** Includes fields for 'User name' (pprintst), 'Password', and 'Confirm password'.
- DB2 fenced user:** Includes a 'New User' checkbox, 'User name' (pprfenc), 'Password', and 'Confirm password'.
- DB2 administration server (DAS) user:** Includes a 'New User' checkbox, 'User name' (ppradmin), 'Password', and 'Confirm password'.

At the bottom right, there is a 'Re-Validate' button. At the bottom center, there are navigation buttons: '< Back', 'Next >', 'Install', and 'Cancel'. A mouse cursor is pointing at the 'Next >' button.

Most of the checks covered in the previous slides also apply for the custom installation path. In addition, in custom installation path, the default password for the DB2 users is not pre-filled as it was in V7.5. The password fields for the DB2 users are left blank. On UNIX systems, if you already have DB2 fenced user and administrative server users defined on your system you only need to provide username and password for the DB2 instance user and just the username of the fenced and administrative user.

## Uninstall – delete database assets

- Uninstallation of DB2 also drops the databases
  - Make sure you uninstall only if no other installation of BPM is using the database



When you uninstall BPM V7.5, if DB2 Express was installed with the product the DB2 instance folder was not deleted. This will result in issues when you reinstall the product and use the same database names for profile creation. As the leftover instance contains the database folders with same names, the product install will fail. In V8.0, when you choose to uninstall DB2 Express, you also need to explicitly select the option to delete all database assets. During uninstall, installation manager will also delete the instance folder.

You can only have one DB2 Express instance installed with installation manager on a system. If you have more than one installation of IBM BPM on your system they can be sharing the DB2 Express. So make sure other installations of BPM are not effected by the uninstall of DB2 express.

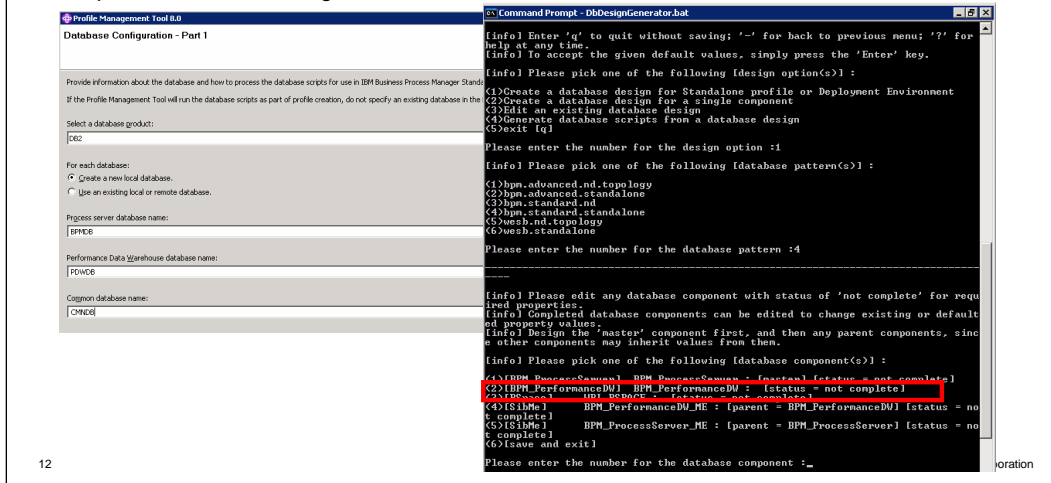
## Password encryption in Installation Manager registry

- Password encryption
  - DB2 credentials and administrative console password saved in Installation Manager registry as clear text in prior versions
  - These passwords are encrypted in V8.0 when using typical install or custom installation paths
- During silent install
  - Use the Installation Manager tools to encrypt the passwords
    - `IM_location\eclipse\tools\imutilsc -silent -nosplash encryptString password_to_encrypt`
  - Use the encrypted password output by the tool in response files or when using imcl

In BPM V7.5 the DB2 credentials and administrative console password are written to Installation Manager registry in plain text. In V8.0 any passwords you provide are encrypted and no longer written in clear text. When using silent install process, you need to create an encrypted password using an Installation Manager utility and use this encrypted password in the response file. Installation Manager provides a tool to encrypt passwords. An example is shown here.

## Additional database in standard profile creation

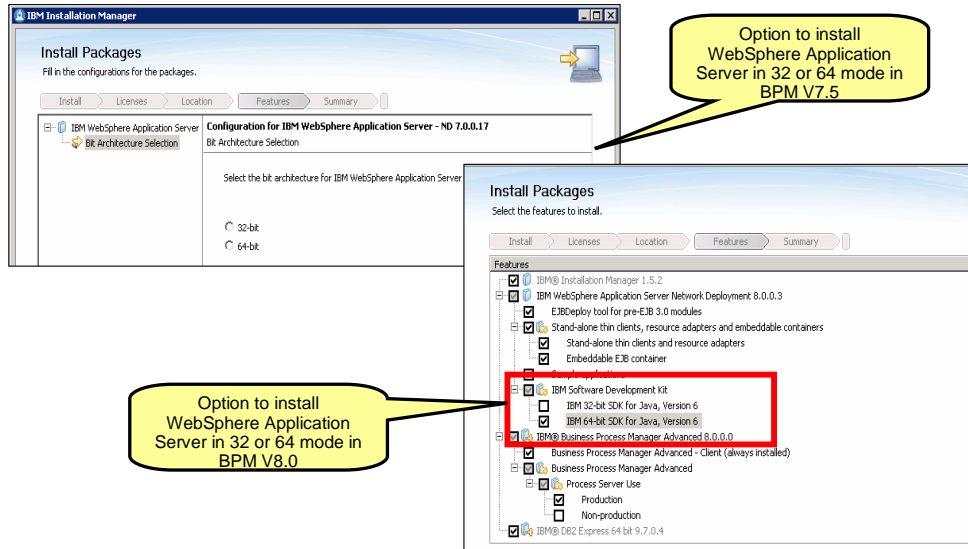
- Additional database used for business space configuration on standard edition
  - Option available in profile management tool, deployment environment configuration panels and in DbDesignGenerator tool



In V8.0, the process portal application uses business space. This will mean that the BPM Standard Process Center and process Server profiles now need three databases instead of two. The business space tables are hosted in the Common Database. You can see here the option to enter the three database names in profile management tool (PMT). You can also see this change in the typical installation path for BPM Standard. Also shown here is the option to configure business space tables in the DbDesignGenerator tool

## 32 or 64 bit mode of installation

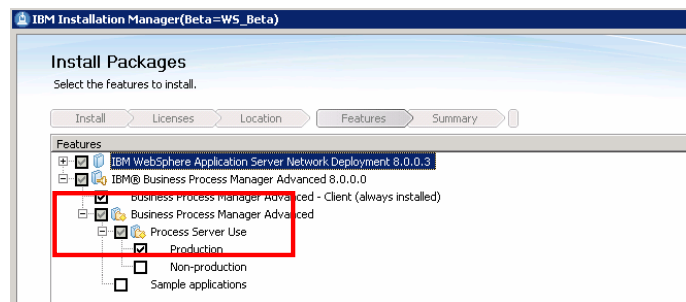
- Option to install as 32 or 64 mode
  - moved from being a separate panel in V7.5 to features panel in V8.0



The option to choose the bit architecture ( 32 or 64 bit) for WebSphere application sever has been moved to the features panel in BPM V8.0 custom installation path as shown here.

## Tags to identify production/non-production process server

- Option available during installation to tag installation for use as production or non production
  - Available both in typical installation and custom installation paths
  - Applies to the product installation and not at profile level
  - Can modify the classification after install using Installation Manager modify option
  - For custom install, the default is production. Except in case of test environment option with IBM Integration Designer



When you install Business Process Manager V8.0, you select either Production (the default) for production use, or Non-production to use only for test, staging, or development. This option is shown explicitly for you to select in the features panel during custom installation. During typical installation, based on the environment type (Production, stage, Test) selected the installer will automatically tag the installation as production or non production. This tag applies for the installed product instance and not to a profile. You can modify the classification after installation using Installation Manager's modify option.

## Tags to identify production/non-production process server

**IBM Business Process Manager Advanced V8.0.0** Select a language: English

Welcome

- ▶ **Typical installation**
- Custom installation
- Release information
- Exit

Specify basic information about the Process Server that you want to install, and the Process Center that you want to connect to.

1. Enter the name of the host:  
 Hostname:
2. Specify the location for the installation:  
 Location:
3. Specify the environment type and enter a name: [Help me decide](#)  
 Type:  Name:
4. Enter the loc Stage at this server will connect to:  
 Use this server [Help me decide](#)  
 Hostname:  Port:   
 Username:  Password:

**IBM Business Process Manager Advanced V8.0.0** Select a language: English

Welcome

- ▶ **Typical installation**
- Custom installation
- Release information
- Exit

**Installation summary**

The following options will be installed. If this list is not correct, click **Back** to make corrections.

- Installing a Production Process Server to C:\IBM\BPM\v8.0
- An existing DB2 database instance will be used for this server.

I have read and accepted the [license agreement](#) and [notices](#)

Shown here is the typical installation panel where you can select the environment type for the process server being created during installation. If you choose the type as production, the installed instance of BPM is tagged for use as production. Test and stage option result in tagging the installation as Non-production instance.

---

## Support for profile management tool on 64 bit systems

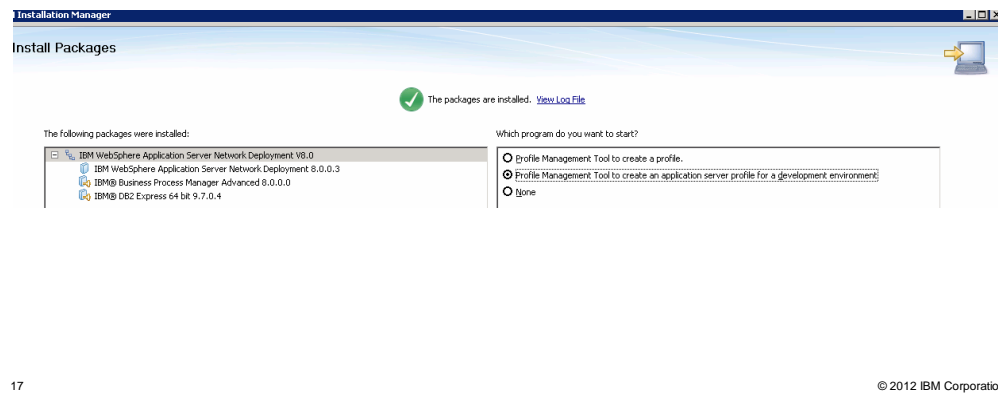
- Support for using Profile Management Tool (PMT) on 64 bit installations
  - No support for PMT on Solaris – use manageprofiles command to create and augment profiles

With V8.0 you can now use profile management tool to create profiles. There is still no support for Profile Management Tool on Solaris 64 bit system. You will need to use manageprofiles command to create or augment a profile.



## Option to launch Profile Management Tool after installation

- To create a profile after install
  - Use the **Profile Management tool to create a profile** option
  - **Profile Management Tool to create an application server profile for development environment** option creates a WebSphere Application Server profile not BPM profile



To create a profile after installation using custom path, select the **Profile Management tool to create a profile** option and not the **Profile Management Tool to create an application server profile for development environment** option. **Profile Management Tool to create an application server profile for development environment** only creates a WebSphere Application Server profile not BPM profile.

## Information center interactive installation guide

- IBM Business Process Manager Interactive installation guide
  - Takes you through the steps to install and configure the IBM Business Process Manager products based on your selection of options

### IBM Business Process Manager Interactive installation guide

This guide takes you through the steps to install and configure the IBM Business Process Manager products (IBM BPM Express, IBM BPM Standard, and IBM BPM Advanced: Process Server). By answering and submitting answers to the following questions, you will generate a custom set of configuration instructions for your environment. The questions are designed to generate instructions for common Standalone and Network Deployment environments.

For more information on installing IBM Business Process Manager on z/OS, see [Installing and configuring IBM Business Process Manager for z/OS](#).

#### Select options that best describe your installation environment

Choose the product configuration to install: ([help me decide](#))

- Express
- Standard
- Advanced
- Advanced: Process Server

Choose the operating system for your server installation: ([help me decide](#))

- Microsoft Windows®
- Linux®
- IBM AIX®
- Solaris

Choose the access level of the user performing the installation: ([help me decide](#))

- Administrator
- Non-Administrator

Choose the installation topology that best represents your environment: ([help me decide](#))

This guide takes you through the steps to install and configure the IBM Business Process Manager (BPM) products. By submitting answers to the questions, you generate a custom set of installation and configuration instructions for common stand-alone and network deployment environments. This is a tool available through the information center.

## Summary

- Presentation covered:
  - How to update launchpad and IBM BPM V8.0 to the latest level during typical installation
  - Additional DB2 username, password checks, validations
  - Database configuration changes for BPM standard profile to support business space
  - Tagging an installation to identify production/non-production usage
  - Support for Profile Management Tool on 64 bit systems Product packaging

In summary, this presentation discusses how you can install and manage IBM Business Process Manager using Installation Manager. It provides details on the various steps in the installation process, how you can install interactively using the launch pad and how to silently install the product. Details on how to upgrade are also covered along with information on the most common issues and log files.

In summary, this presentation discusses the various changes made to the installation process in V8.0. It provides details on the various database related enhancements like checking password compliance, existing instance data, deletion of database assets on uninstall and so on..

## Feedback

Your feedback is valuable

You can help improve the quality of IBM Education Assistant content to better meet your needs by providing feedback.

- Did you find this module useful?
- Did it help you solve a problem or answer a question?
- Do you have suggestions for improvements?

Click to send email feedback:

[mailto:iea@us.ibm.com?subject=Feedback\\_about\\_BPMv80\\_Installation\\_Overview.ppt](mailto:iea@us.ibm.com?subject=Feedback_about_BPMv80_Installation_Overview.ppt)

This module is also available in PDF format at: [../BPMv80\\_Installation\\_Overview.pdf](..../BPMv80_Installation_Overview.pdf)

You can help improve the quality of IBM Education Assistant content by providing feedback.



## Trademarks, disclaimer, and copyright information

IBM, the IBM logo, ibm.com, DB2, Express, and WebSphere are trademarks or registered trademarks of International Business Machines Corp., registered in many jurisdictions worldwide. Other product and service names might be trademarks of IBM or other companies. A current list of other IBM trademarks is available on the web at "[Copyright and trademark information](http://www.ibm.com/legal/copytrade.shtml)" at <http://www.ibm.com/legal/copytrade.shtml>

Windows, and the Windows logo are registered trademarks of Microsoft Corporation in the United States, other countries, or both.

UNIX is a registered trademark of The Open Group in the United States and other countries.

Other company, product, or service names may be trademarks or service marks of others.

THE INFORMATION CONTAINED IN THIS PRESENTATION IS PROVIDED FOR INFORMATIONAL PURPOSES ONLY. WHILE EFFORTS WERE MADE TO VERIFY THE COMPLETENESS AND ACCURACY OF THE INFORMATION CONTAINED IN THIS PRESENTATION, IT IS PROVIDED "AS IS" WITHOUT WARRANTY OF ANY KIND, EXPRESS OR IMPLIED. IN ADDITION, THIS INFORMATION IS BASED ON IBM'S CURRENT PRODUCT PLANS AND STRATEGY, WHICH ARE SUBJECT TO CHANGE BY IBM WITHOUT NOTICE. IBM SHALL NOT BE RESPONSIBLE FOR ANY DAMAGES ARISING OUT OF THE USE OF, OR OTHERWISE RELATED TO, THIS PRESENTATION OR ANY OTHER DOCUMENTATION. NOTHING CONTAINED IN THIS PRESENTATION IS INTENDED TO, NOR SHALL HAVE THE EFFECT OF, CREATING ANY WARRANTIES OR REPRESENTATIONS FROM IBM (OR ITS SUPPLIERS OR LICENSORS), OR ALTERING THE TERMS AND CONDITIONS OF ANY AGREEMENT OR LICENSE GOVERNING THE USE OF IBM PRODUCTS OR SOFTWARE.

© Copyright International Business Machines Corporation 2012. All rights reserved.