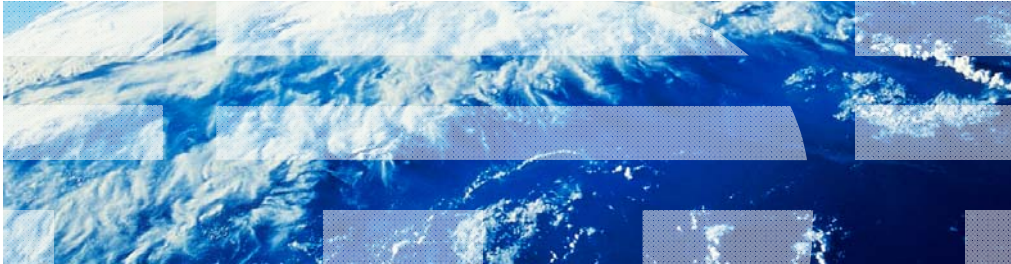


---

# Business Process Management IBM Business Process Manager V8.0.1

Installation, configuration, and migration updates



© 2012 IBM Corporation

This presentation provides an introduction to the IBM Business Process Manager version 8.0.1 installation, configuration and migration updates.

## Goals and agenda

- Agenda:
  - New features and changes in V8.0.1
    - Installation and configuration
    - Migration and upgrade
    - Standard operating environment (SOE) updates
    - Information center

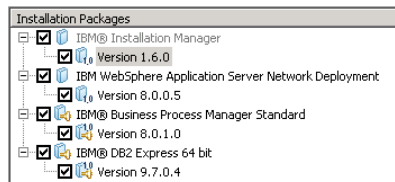
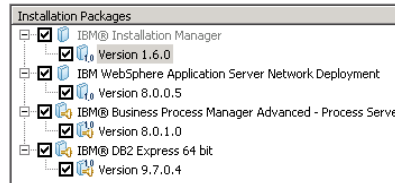
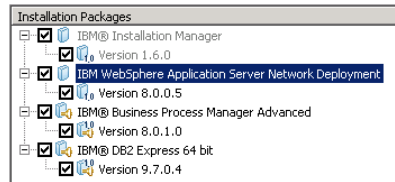
The goal of the presentation is to give an overview of the new enhancements for IBM Business Process Manager version 8.0.1. Changes for install and configuration include better password setup during typical install and separation of response file samples by type. The latest process for upgrading to 8.0.1 and some standard operating environment improvements are also covered. This presentation will end with an overview of the changes made to improve the Information Center.

## ***Installation and configuration***

This section covers the details on installation and configuration changes.

## Default installations

- IBM Installation Manager – 1.6.0
- IBM WebSphere® Application Server – 8.0.0.5
- IBM DB2® Express® – 9.7.0.4
- IBM DB2 – 10.1 supported
- Advanced – 8.0.1.0
- Process server – 8.0.1.0
- Standard – 8.0.1.0
- Browsers: chrome and safari 5 support added



For the BPM version 8.0.1 release the installation manager has moved up to version 1.6.0. This version must be installed before an upgrade is made to 8.0.1. The application server version is now 8.0.0.5 which is upgraded during install along with the BPM express, standard or advanced editions installation. The IBM DB2 Express version 9.7.0.4 is available during installation but DB2 10.1 is also supported. The support for Chrome and Safari 5 browsers has also been added.

## Typical installation

- Username and password
  - Administration
  - Database
  - Does not validate password
  - Directory is not empty



1. Enter the name of the host:  
 Hostname:
2. Specify the location for the installation:  
 Location:
3. Choose a user. This directory is not empty. s administrative account.  
 Username:  Password:   
 Confirm:

During typical installation the username and password can be set on the installation panel. For the 8.0 release these values were set during the installation to default values for administrative log in and for database access. These values had to be changed after install. The entered values are not validated to meet specific minimal security requirements since each company will have its own rules. The password is validated to be consistent in the Confirm entry. If the installation is using a directory which has a previous installation, then a notification opens stating “This directory is not empty.”

## Typical installation database selection

- DB2 Express
- Existing database

**Set up the database server**

Would you like to use an existing database?

Yes
  No. I need one installed for me. [Help me decide.](#)

DB2 Express will be installed for you. Choose a username and password for the database:

Username:  Password:

Confirm:

**Set up the database server**

Would you like to use an existing database?

Yes
  No. I need one installed for me. [Help me decide.](#)

1. Select the database you would like to use:

2. Specify the hostname and port used for connection:

Hostname:  Port:

3. Specify the username and password for DB2 connectivity:

Username:  Password:

4. Specify the database names that will be used:

Common database name:   
 Process Center database name:   
 Performance Data Warehouse database name:

6

Installation and configuration, and migration updates

© 2012 IBM Corporation

The data base selection panel is simplified for DB2 Express as the default. The panel shown at the top allows entry of the username and password for the DB2 Express installation. If you have an existing database, then select “Yes” to display the panel shown at the bottom. This panel allows the database type selection. The host name and port to the database must be specified along with the username and password for the database. If the database names are different from the defaults, then entry of the database names is allowed.

## Existing administrator

- Errors
- Delete account

### Installation information

While the installation is proceeding, print the following information for future reference.

Show passwords

#### Process Center

Install Location: C:\IBM\BPM\v8.0.1  
 Process Center: [Process\\_Center\\_UBI\\_to\\_be\\_determined\\_after\\_profile\\_creation](#)  
 Admin user: bpmadmin  
 Admin password: bpmadmin

#### Process Designer

Location: C:\IBM\BPM\ProcessDesigner\v8.0.1

#### Embedded DB2 Database Server

Username: bpmadmin  
 Password: bpmadmin  
 Common database name:  
 Name: CMNDB  
 Process Center database name:  
 Name: BPMDB  
 Performance Data Warehouse database name:  
 Name: PDWDB



**bpmadmin**  
 Administrator  
 Password protected

### Installation results

#### Installation completed with errors

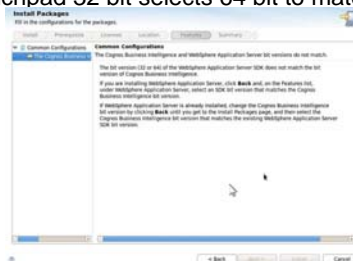
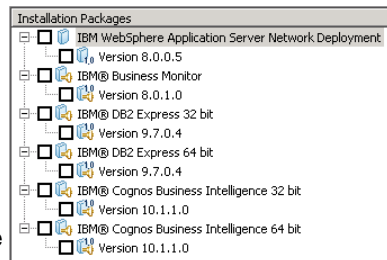
Installation generated the following messages:

User bpmadmin exists on the system but has a password that is different from the default password. The default password for user bpmadmin has changed from what it was in BPM v7.5.x. The new default password is "Db2pswd!". To use the default password, change the password of user bpmadmin to the default password. Then close the typical installation and restart it. To specify a password for user bpmadmin, close the typical installation, restart the installer, and select the custom installation option.

When you are upgrading to version 8.0.1, you must know the correct username and password of the existing installed version. If they do not match, the installation results will display a message about the mismatch. The message indicates the password for the default DB2 install was "Db2pswd!" and "bpmadmin" for the administrator. Go back to the password page and use those passwords. If this does not work, the "bpmadmin" username can be deleted from the system and a new username will be created.

## Installed Cognos bit version aware

- WebSphere Application Server SDK on Cognos® to select 32 / 64 bit
- Check WebSphere Application Server SDK installation to verify correct version
- Wrong bit setting show error panel when WebSphere Application Server and Cognos are different
- Select the same bit version or reinstall Cognos
- Running launchpad 32 bit selects 64 bit to match system



8

Installation and configuration, and migration updates

© 2012 IBM Corporation

The installation will now recognize the installed application server bit version for Cognos and validate that the correct bit version is being installed for BPM. When a previous version of the application server is installed, the bit version of that installation is checked. If different bit versions are selected or verified during install, the message shown here will require that the installation go back to the previous panel and allows selection of the correct bit version. By default, the launch pad will select the bit version of the system used for installation.



## Port conflicts - configureNode

- Specify a range of ports
- dmgr.initialPortAssignment new ports – configureNode
- Set in the properties file
  - Dmgr
  - Nodes increments of 20
    - Support
    - AppTarget
    - Message
    - Web

```
# Deployment Manager Properties
dmgr.hostName = hostName           # Required, specify the host
name of the dmgr machine |
dmgr.adminUserName = admin         # Required, specify the user
name for the dmgr primary admin
dmgr.adminPassword = admin        # Required, specify the password
for the dmgr primary admin
#dmgr.keyStorePassword=           # Optional, if not specified, the
default value WebAS will be used.
#dmgr.initialPortAssignment=2030  # Optional, specify the
starting port of dmgr profile
```

Previously the port assignments for the system were selected by the installation. A starting point for port assignments will start at the port specified with the assignment of the “dmgr.initialPortAssignment” being set in the installation script files. This will install the deployment manager at the port specified. Each node is configured at increments of 20 ports from that point. If this parameter is not specified, the previous port assignment algorithm is used for the starting port.

## Customize port through Deployment Environment wizard

- Support for conflicting ports for Network Deployment topologies
- WebSphere will pick a range of ports before
- Provide a field in Deployment Environment wizard for the initial port value for all servers on a node
- Each cluster has 20 ports
  - Application cluster starts at 12000
    - 17 ports used
      - WC\_defaulthost
      - SIP defaulthost secure
    - Support cluster starts at 12020
    - Messaging cluster starts at 12040
    - Web cluster starts at 12060

Node ID	Version	Application Deployment Target	Messaging Infrastructure	Supporting Infrastructure	Web Applications
wpplabnode04	SPM4 S.S.1.0. SAPIC S.O.1.0. SAPIC S.O.1.0. WPS S.O.1.0	1	1	1	1

Enter the initial port used for port number generation for each node.  
12000

Port Name	Port
BOOTSTRAP_ADDRESS	12004
SOAP_CONNECTOR_ADDRESS	12005
SAS_SSL_SERVERAUTH_LISTENER_ADDRESS	12007
CSIV2_SSL_SERVERAUTH_LISTENER_ADDRESS	12008
CSIV2_SSL_MUTUALAUTH_LISTENER_ADDRESS	12009
WC_adminhost	12002
WC_defaulthost	12000
DCS_UNICAST_ADDRESS	12011
WC_adminhost_secure	12003
WC_defaulthost_secure	12001
SIP_DEFAULTHOST	12016
SIP_DEFAULTHOST_SECURE	12017
SIB_ENDPOINT_ADDRESS	12012
SIB_ENDPOINT_SECURE_ADDRESS	12013
SIB_MQ_ENDPOINT_ADDRESS	12014
SIB_MQ_ENDPOINT_SECURE_ADDRESS	12015
ORB_LISTENER_ADDRESS	12010
IPC_CONNECTOR_ADDRESS	12006

10

Installation and configuration, and migration updates

© 2012 IBM Corporation

The deployment environment wizard also allows the initial port to be specified for the deployment manager. From that starting port each node is created at increments of 20 ports. Shown in the panel, the “WC\_defaulthost” is the starting point of each node, ending with the port for the “SIP\_DEFAULTHOST\_SECURE” using 17 ports. If the starting port value is assigned to 12000, then the application cluster starts at 12000. The support cluster will start at 12020, followed by the messaging and web clusters.

## Response file error correction

- Removal of extra lines per OS
- Removal of replacement variables
  - Customers did not replace
  - Directories as \$(INSTALL\_LOCATION)
- Separate templates for runtime and tools with a properties file
- No changes on z/OS®
- Response files split for different operating systems, bit architecture, and usage type
  - Administrative versus non-administrative, root versus non-root
  - For example:
    - BPM Advanced Windows
      - template\_response\_admin\_32bit.xml
      - template\_response\_admin\_64bit.xml
      - template\_response\_nonadmin\_32bit.xml
      - template\_response\_nonadmin\_64bit.xml

The sample response files for installation and configuration have been simplified to avoid confusion. The removal of extra lines based on the operating system has been accomplished by separating the response files into operating system and bit types. The use of replacement variables has been removed. Previously if the replacement variable was not set, this will create a directory with a name of \$(INSTALL\_LOCATION) which cannot be used by the system. Separate templates for runtime and tools have also been created. These changes have not been applied to the z/OS platform.

## Improve maintaining silent install response file

- File names include OS, product and edition, bit version
- Additional instructional comments
- EclipseCache instruction commented out
- Default user IDs remove, must be updated by user
- DB2 Express cannot be installed as non-admin/non-root
  - Removed all lines in templates
- Silent installation response file examples:
  - bpmAdv\_win\_response\_admin\_32bit.xml
  - bpmAdv\_win\_response\_nonadmin\_64bit.xml
  - bpmAdvPS\_aix\_response\_root\_64bit.xml
  - bpmAdvPS\_aix\_response\_nonroot\_64bit.xml
  - bpmAdvPS\_linux\_zseries\_response\_root\_64bit.xml
  - bpmStd\_aix\_response\_root\_64bit.xml

Here are some examples of the new naming for the response files which includes the edition type, the operating system, the role and the bit version. Additional instructional comments have also been included for each file. The “EclipseCache” instruction has been commented out. The default user IDs have been removed requiring that you must update these values. The DB2 Express cannot be installed as non-admin or non-root, therefore those lines have been removed from the templates.

## Response file updates

### Response Files at was.install.root/BPM/samples/manageprofiles

- Added response files for edition, profile and DB combinations

- Editions
  - Standard
  - Advanced
- Profiles
  - Stand-alone
  - Managed
  - DMgr
- Profile Types
  - Process Center
  - Process Server
- Databases
  - DB2
  - Oracle
  - SQL Server
  - DB2zOS

- PC\_Adv\_DMGr\_DB2.response
- PC\_Adv\_DMGr\_DB2zOS.response
- PC\_Adv\_DMGr\_Oracle.response
- PC\_Adv\_DMGr\_SQLServer.response
- PC\_Adv\_Managed\_DB2.response
- PC\_Adv\_Managed\_DB2zOS.response
- PC\_Adv\_Managed\_Oracle.response
- PC\_Adv\_Managed\_SQLServer.response
- PC\_Adv\_Standalone\_DB2.response
- PC\_Adv\_Standalone\_DB2zOS.response
- PC\_Adv\_Standalone\_Oracle.response
- PC\_Adv\_Standalone\_SQLServer.response
- PC\_Std\_DMGr\_DB2.response
- PC\_Std\_DMGr\_DB2zOS.response
- PC\_Std\_DMGr\_Oracle.response
- PC\_Std\_DMGr\_SQLServer.response
- PC\_Std\_Managed\_DB2.response
- PC\_Std\_Managed\_DB2zOS.response
- PC\_Std\_Managed\_Oracle.response
- PC\_Std\_Managed\_SQLServer.response
- PC\_Std\_Standalone\_DB2.response
- PC\_Std\_Standalone\_DB2zOS.response
- PC\_Std\_Standalone\_Oracle.response
- PC\_Std\_Standalone\_SQLServer.response
- PS\_Adv\_DMGr\_DB2.response
- PS\_Adv\_DMGr\_DB2zOS.response
- PS\_Adv\_DMGr\_Oracle.response
- PS\_Adv\_DMGr\_SQLServer.response
- PS\_Adv\_Managed\_DB2.response
- PS\_Adv\_Managed\_DB2zOS.response
- PS\_Adv\_Managed\_Oracle.response
- PS\_Adv\_Managed\_SQLServer.response
- PS\_Adv\_Standalone\_DB2.response
- PS\_Adv\_Standalone\_DB2zOS.response
- PS\_Adv\_Standalone\_Oracle.response
- PS\_Adv\_Standalone\_SQLServer.response
- PS\_Std\_DMGr\_DB2.response
- PS\_Std\_DMGr\_DB2zOS.response
- PS\_Std\_DMGr\_Oracle.response
- PS\_Std\_DMGr\_SQLServer.response
- PS\_Std\_Managed\_DB2.response
- PS\_Std\_Managed\_DB2zOS.response
- PS\_Std\_Managed\_Oracle.response
- PS\_Std\_Managed\_SQLServer.response
- PS\_Std\_Standalone\_DB2.response
- PS\_Std\_Standalone\_DB2zOS.response
- PS\_Std\_Standalone\_Oracle.response
- PS\_Std\_Standalone\_SQLServer.response

The sample response files for database creation have also been simplified. These response files have been separated into edition, profile types and specific databases. Here is a list of the new files available in the BPM version 8.0.1 release.

## ***Migration and upgrade***

The next section covers the details on some of the migration and upgrade process changes.

## Upgrade tool support for iFix data

- Update database schema and business data
- Upgrade database with ifix data
- New parameter for ifix in upgrade tool
- Once for each ifix

The user must input the ifix number in the command line, and install the specified ifix only. Will not bootstrap data and clean messaging engine tables again.

**StandAlone:**

```
upgradeProcessData.bat/sh -profileName <profile_name> -ifix <JR_number>
```

**Network Deployment:**

```
upgradeProcessData.bat/sh -profileName <dmgr_profile> -nodeName <node_name> -serverName  
<server_name> -ifix <JR_number>
```

A new parameter for the iFix upgrade tool now allows a specific iFix number to be entered for database updates. This parameter is used with the “upgradeProcessData” command. The parameter allows only one iFix to be specified, therefore it must be run for each iFix needed for the database upgrade.

## Upgrade stand-alone

- <http://www-01.ibm.com/support/docview.wss?uid=swg27036335>
- Back up
  - profiles – backupConfig
  - Databases
  - XSL transformation files - *install\_root/ProcessChoreographer/Staff* directory
    - EverybodyTransformation.xml
    - LDAPTTransformation.xml
    - SystemTransformation.xml
    - UserRegistryTransformation.xml
    - VMMTransformation.xml
- Stop all WebSphere processes
  - WASServiceMsg.dll (reboot can be required)
- Install refresh pack (verify no errors)

The upgrade to version 8.0.1 requires that these steps be followed to restore any profile and application data in case a rollback is required. This process is specified in the update instructions web page at the location shown here. The back up of profiles is done using the backupConfig command. This will create a backup file with the name shown in the command window. Make note of this file name and location. The databases should also be backed up using the process specified for the specific database being used. The transformation files for Process Choreographer must be copied to a new location since these are deleted during the upgrade process. After stopping all WebSphere processes, a reboot of the system could be required to remove resources that have not been released. With all of this done, the refresh pack can be installed using the installation manager or scripts configured to the system parameters.



## Update process 8.0.0 to 8.0.1

- Installation Manager 1.6.0
  - Select WebSphere Application Server package
    - WebSphere Application Server 8.0.0.5
    - BPM 8.0.1.0
- Process Designer updated through Process Center
- Update complete – View log

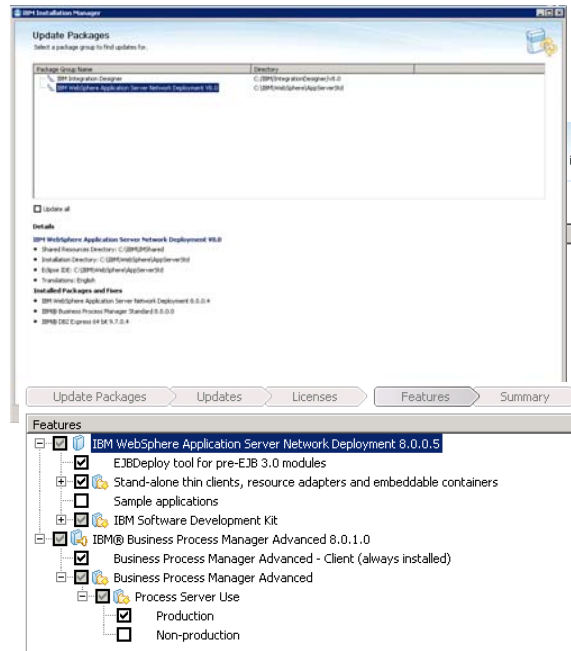
### Details

#### IBM WebSphere Application Server Network Deployment V8.0

- Shared Resources Directory: C:\IBM\IMShared
- Installation Directory: C:\IBM\WebSphere\AppServerStd
- Eclipse IDE: C:\IBM\WebSphere\AppServerStd
- Translations: English

#### Installed Packages and Fixes

- IBM WebSphere Application Server Network Deployment 8.0.0.4
- IBM® Business Process Manager Standard 8.0.1.0
- IBM® DB2 Express 64 bit 9.7.0.4



17

Installation and configuration, and migration updates

© 2012 IBM Corporation

Here is an example of the upgrade process using the installation manager. During this upgrade the installation manager will first be upgraded to version 1.6.0. As the other components are upgraded, the WebSphere application server is upgraded to version 8.0.0.5 and the Business Process Management components will be upgraded to version 8.0.1. During the installation manager upgrade the selection of these versions is allowed along the additional components needed. The Process Designer can be updated through the Process Center. Once the upgrade had completed, view the installation log to verify any errors or warnings that can affect your installation.

## Completing the stand-alone upgrade

- Update the database
  - Generate SQL scripts to update database schemas
    - `BPMGenerateUpgradeSchemaScripts.bat -upgrade source_version profile_name`
  - Update the Process Server database
    - `BPM\Lombardi\tools\upgrade\UpgradeProcessData\upgradeProcessData.bat -profileName profile_name`
- Upgrade BPC
  - upgrade the BPEEDB database manually to create the SCHEMA\_STATUS table
- Restart the stand-alone server
  - Verify success
- To restore to 8.0.0.0
  - restoreConfig file name (used for backupConfig)
  - Restore databases

There are a few steps required once the upgrade installation has completed. The database scripts must be generated and the data must be restored to the database. If the system has the business process choreographer installed, the files copied before the upgrade must be restored and the BPEEDB database must create the SCHEMA\_STATUS table. Once these steps are completed, restart the server and verify a successful start. Before starting an upgrade process, review the latest documentation in the information Center and create an upgrade plan.

If a rollback is required, complete the rollback through the installation manager and then run the restoreConfig command file with the file name that was created with the backupConfig command. Update the databases for the specific database installed and restore the Process Choreographer transformation files if needed. The server can now be started. In a clustered environment this process must be done for each cluster.

## Reduce manually steps for migration

- Added –all option for clusters
- Support local/remote Network Deployment migration
- BPMigrateCluster command creates a log
  - Snapshot\_directory/logs/BPMigrateCluster.<profile name>.<clusterName>.time\_stamp.log

### Migration overview – Migration steps for advanced ND environment

#### 1.Migrate the Dmgr profile

```
BPMSnapshotSourceProfile.bat C:\BPM751 Dmgr01 C:\MigrationSnapshots\Dmgr01
BPMCreateTargetProfile.bat C:\MigrationSnapshots\Dmgr01 Dmgr01
BPMigrateProfile.bat -username admin -password admin C:\MigrationSnapshots\Dmgr01 Dmgr01
```

#### 2.Upgrade the product databases

```
BPMGenerateUpgradeSchemaScripts.bat BSDB.CMNBS00 C:\MigrationSnapshots\Dmgr01
upgradeSchema.bat db2admin passw0rd
upgrade_7x.bat (upgrade ProcessServer & PerformanceDW DB, if source version > V7.5)
```

#### 3.Migrate custom nodes' profile

(Same as Dmgr profile migration)

```
BPMigrateCluster.bat -all C:\MigrationSnapshots\Dmgr01 Dmgr01
```

#### 4.Migrate Clusters

```
BPMigrateCluster.bat C:\MigrationSnapshots\Dmgr01 MyPC.AppTarget Dmgr01
BPMigrateCluster.bat C:\MigrationSnapshots\Dmgr01 MyPC.Messaging Dmgr01
BPMigrateCluster.bat C:\MigrationSnapshots\Dmgr01 MyPC.Support Dmgr01
BPMigrateCluster.bat C:\MigrationSnapshots\Dmgr01 MyPC.WebApp Dmgr01
```

#### 5.Configure the additional features(Business Process Definitions)

```
BPMConfigureProcessServer.bat -dbDesign C:\bpm.standard.nd.dbDesign
```

#### 6.Synchronize nodes

When migrating to a new version, each cluster must be migrated. To help with this process, a “–all” option has been added to the upgrade scripts which will find and upgrade all clusters. This eliminates the script being run for each cluster separately.

## ***Standard operating environment***

The next section covers the details on some of the new features in the standard operating environment. For the standard operating environment a few changes have been made to improve performance and standards compliance.

## Configuration changes

- Simplify editing of Lombardi® XML configuration files
- A set of XML files for Lombardi in the configuration dir
- Server and cluster level files
- Added database scripts and readme files in the user.install.root/dbscripts

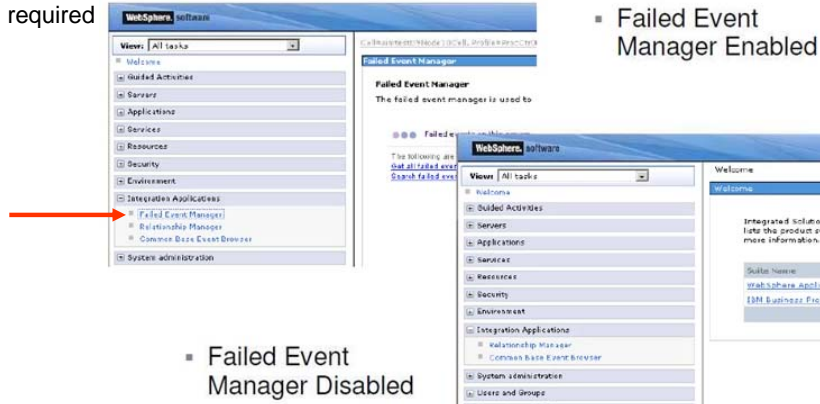
- user.install.root/dbscripts/ProcessChoreographer/<db type>/<db name>/BPEDB
  - configBPEDB.sh/.bat
  - createBPEDB.sh/bat
- user.install.root/dbscripts/ProcessServer/<db type>/<db name>
  - configBPMDB.sh/bat
  - createBPMTables.sh/bat
- user.install.root/dbscripts/PerformanceDW/<db type>/<db name>
  - configPDWDB.sh/bat
  - createPDWTables.sh/bat

- Parameters:
- serverName
- nodeName
- clusterName
- performanceDWJNDIURL
- performanceDWScope
- adminID
- adminAuthAlias
- authorAuthAlias
- serverAuthAlias
- operatorID
- repositoryServerURL
- repositoryServerHeartbeat
- appServerName
- appServerPort
- environmentName
- procsrvDBURL
- procsrvDBUserID
- procsrvDBPassword
- perfDWDBURL
- perfDWDBUserID
- perfDWDBPassword

The pre-existing Lombardi XML configuration files have been simplified by moving some of the common configuration parameters into the BPM XML configuration files. The list of parameters shown on the right are some of the parameters moved. Many of these parameters control the system specific access information for that server. By moving these parameters, the BPM backup and migration utilities will capture the Lombardi server configuration along with the BPM configuration. There have also been some database scripts and readme files included in the user.install.root/dbscripts directory.

## Failed event manager

- Option to disable failed event manager in administrative console
- Property in the was.install.root/properties/failedEventManager.properties
  - EnableFailedEventManagerInAdminConsole=true
- Server restart required



Failed Event Manager Disabled

22

Installation and configuration, and migration updates

© 2012 IBM Corporation

An option has been added in a configuration file to remove failed event manager from the administrative console. To restrict access to the failed event data, the “EnableFailedEventManagerInAdminConsole” parameter has been added to the “failedEventManager.properties” file. This will remove the “Failed Event Manager” selection from the administrative console. The server must be restarted for this change to be seen.

## Server startup time reduction when using LDAP

- Slow startup with LDAP
- Use LDAP filters to limit return values
- 100,000 groups 180 minutes down to several minutes

The server startup time has been greatly reduced when using LDAP by using LDAP filters to limit the return values. As an example, a LDAP startup with 100,000 groups did take 180 minutes. By using the LDAP filters the startup time is reduced to just a few minutes.

## WSRP 2.0

- Web Services Remote Portlet specification
- Export JSR 286 Dashboard Portlets
- Supported on WebSphere Portal

The Web Services Remote Portlet specification version 2.0 has been added to enable dashboard portlets to run in the BPM portal. The WSRP 2.0 provider that can be installed on the WebSphere Application Server, to allow the application server to serve portlets to WebSphere Portal Server.



## ***Information center updates***

The next section covers the details on some of the updates that occurred for the information center.

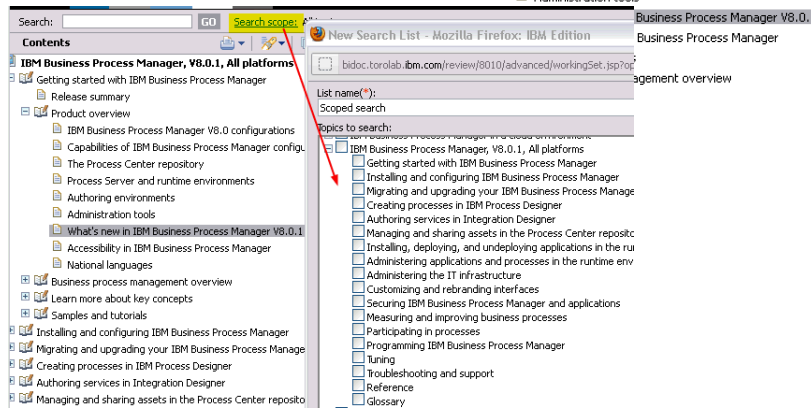
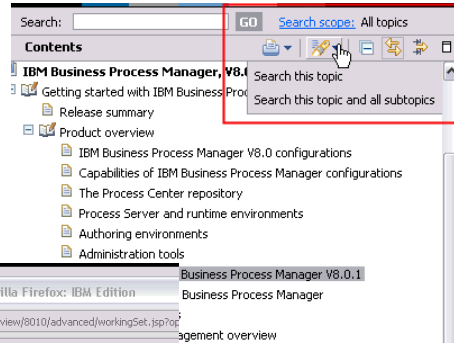
## Information center updates

- Updated installation, configuration, and migration information:
  - Enhanced response files method for installing BPM silently (better sample response files are provided with the product installation package)
  - New response files method for configuring profiles with the manageprofiles command
  - z/OS information in the Interactive Installation and Configuration Guide (IICG) – z/OS opens as an operating system option in the Q+A, and the z/OS installation and configuration topics are pulled together in the generated output
- Updated governance information
  - Governance implementations have changed completely from 8.0.0.0, so people already using governance will need to change their applications
  - Governance is always enabled now rather than explicitly invoked
- More information in the information center for configuring 99Local.xml and 100Custom.xml files:  
[http://pic.dhe.ibm.com/infocenter/dmndhelp/v8r0m1/topic/com.ibm.wbpm.admin.doc/topics/managing\\_twks\\_config\\_settings.html](http://pic.dhe.ibm.com/infocenter/dmndhelp/v8r0m1/topic/com.ibm.wbpm.admin.doc/topics/managing_twks_config_settings.html)
- New information center content for the new SAP Solution Manager integration (new in 8.0.1.0):  
[http://pic.dhe.ibm.com/infocenter/dmndhelp/v8r0m1/topic/com.ibm.wbpm.admin.doc/managinglib/topic/csap\\_overview.html](http://pic.dhe.ibm.com/infocenter/dmndhelp/v8r0m1/topic/com.ibm.wbpm.admin.doc/managinglib/topic/csap_overview.html)
- New information center content for ECM integration, including event subscriptions:  
[http://pic.dhe.ibm.com/infocenter/dmndhelp/v8r0m1/topic/com.ibm.wbpm.wie.editor.doc/modeling/topic/c\\_ecmworkwithecmsys.html](http://pic.dhe.ibm.com/infocenter/dmndhelp/v8r0m1/topic/com.ibm.wbpm.wie.editor.doc/modeling/topic/c_ecmworkwithecmsys.html)
- Information Center for 8.0.1:  
<http://pic.dhe.ibm.com/infocenter/dmndhelp/v8r0m1/topic/com.ibm.wbpm.main.doc/ic-homepage-bpm.html>

The information center has been updated with the latest information for installation, configuration, migration and governance to support version 8.0.1. Details of the changes in the Lombardi configuration files 99Local.xml and 100Custom.xml have been included. New content has been added for SAP solution manager and ECM integration, including event subscriptions. Enhanced and embedded assistance content for coaches has also been added. Use the URLs provided here to access detailed information on each of these topics.

## Fine-grained search

- Searching within a topic and its children
- Searching within one or more specific containers (subsections)



The search in the Info Center now has more fine-grained control. When setting up a search, the search by topic or topic and subtopics can be selected. Another improvement in the search allows specific containers to be selected to reduce the scope of the returned information.

## Summary

- New features and changes in V8.0.1
  - Installation and configuration
  - Migration and upgrade
  - Standard operating environment (SOE) updates
  - Information center

This presentation covered an overview of the new enhancements for IBM Business Process Manager version 8.0.1. Changes for install and configuration include better password setup during typical install and separation of response file samples by type. The latest process for upgrading to 8.0.1 and some new migration options that reduce the time and manual interaction for migration. Some standard operating environment improvements are also covered for sample resource file improvements, LDAP start time and standards adoption. This presentation ended with an overview of the changes made to improve the info Center.



## Feedback

Your feedback is valuable

You can help improve the quality of IBM Education Assistant content to better meet your needs by providing feedback.

- Did you find this module useful?
- Did it help you solve a problem or answer a question?
- Do you have suggestions for improvements?

Click to send email feedback:

[mailto:iea@us.ibm.com?subject=Feedback\\_about\\_BPM801\\_InstallConfigMigration.ppt](mailto:iea@us.ibm.com?subject=Feedback_about_BPM801_InstallConfigMigration.ppt)

This module is also available in PDF format at: [../BPM801\\_InstallConfigMigration.pdf](..../BPM801_InstallConfigMigration.pdf)

You can help improve the quality of IBM Education Assistant content by providing feedback.



## Trademarks, disclaimer, and copyright information

THE INFORMATION CONTAINED IN THIS PRESENTATION IS PROVIDED FOR INFORMATIONAL PURPOSES ONLY. Other product and service names might be trademarks of IBM or other companies. A current list of other IBM trademarks is available on the web at "[Copyright and trademark information](http://www.ibm.com/legal/copytrade.shtml)" at <http://www.ibm.com/legal/copytrade.shtml>

Windows, and the Windows logo are registered trademarks of Microsoft Corporation in the United States, other countries, or both.

Other company, product, or service names may be trademarks or service marks of others.

THE INFORMATION CONTAINED IN THIS PRESENTATION IS PROVIDED FOR INFORMATIONAL PURPOSES ONLY. WHILE EFFORTS WERE MADE TO VERIFY THE COMPLETENESS AND ACCURACY OF THE INFORMATION CONTAINED IN THIS PRESENTATION, IT IS PROVIDED "AS IS" WITHOUT WARRANTY OF ANY KIND, EXPRESS OR IMPLIED. IN ADDITION, THIS INFORMATION IS BASED ON IBM'S CURRENT PRODUCT PLANS AND STRATEGY, WHICH ARE SUBJECT TO CHANGE BY IBM WITHOUT NOTICE. IBM SHALL NOT BE RESPONSIBLE FOR ANY DAMAGES ARISING OUT OF THE USE OF, OR OTHERWISE RELATED TO, THIS PRESENTATION OR ANY OTHER DOCUMENTATION. NOTHING CONTAINED IN THIS PRESENTATION IS INTENDED TO, NOR SHALL HAVE THE EFFECT OF, CREATING ANY WARRANTIES OR REPRESENTATIONS FROM IBM (OR ITS SUPPLIERS OR LICENSORS), OR ALTERING THE TERMS AND CONDITIONS OF ANY AGREEMENT OR LICENSE GOVERNING THE USE OF IBM PRODUCTS OR SOFTWARE.

© Copyright International Business Machines Corporation 2012. All rights reserved.