

## IBM BUSINESS PROCESS MANAGER 7.5.1 – LAB EXERCISE

# Federated task management One UI to work on both coaches and human tasks

What this exercise is about .....	1
Lab requirements .....	1
What you should be able to do.....	1
Introduction.....	2
Part 1: IBM Process Designer – Build a human centric process .....	3
Part 2: IBM Integration Designer – Implementing the human-centric process application .....	19
Part 3: Run the human-centric process application.....	41
Part 4: Demonstrate federated task management by running the process application.....	46
What you did in this lab exercise.....	53

## What this exercise is about

IBM Business Process Manager Advanced (BPM) V7.5.1 is a single BPM solution that combines the best of breed human-centric and integration-centric capabilities into a unified platform.

When developing a business process that uses services between Process Designer and Integration Designer, it is valuable to work on coaches and human tasks in the same user interface.

## Lab requirements

These products below are required for this exercise:

- IBM Business Process Manager V7.5.1 Server with IBM Process Center V7.5.1 stand-alone profile
- IBM Process Designer V7.5.1
- IBM Integration Designer V7.5.1
- DB2 V9.7.3 or higher

Throughout the lab, references to these products drop the IBM prefix and the version, calling the Process Center, Process Designer, and Integration Designer.

## What you should be able to do

At the end of this lab you should be able to perform these tasks:

- As an administrator and end user of a human centric system
  - Create a human-centric BPEL process
  - Integrate a BPD into a BPEL process and work with SCA artifacts associated with the BPD
  - Refresh and publish to the process center
  - Use the BPC Explorer to drive or start the scenario
- As the process developer using the process designer
  - Create a process application
  - Create a process application and simple business process that uses a coach

- Correctly pass data through the process
  - Test the process application using the process inspector.
  - Use the process portal to work with the coach
  - As the end user
    - Work on both coaches and WebSphere Process Server human tasks in one task List widget within Business Space
- 

## Introduction

The development of a solution demonstrating the interaction of two different process development environments involves the development of processes by two user roles (personas). First, the Business Author or Process Designer named Bob, who uses the IBM Process Designer, formerly known as Lombardi Authoring Environment. Second, the IT Developer or Integration Specialist named Igor, who uses the IBM Integration Designer, former known as WebSphere Integration Designer. Integration Designer has been enhanced in such a way that it provides a new perspective named Process Center perspective. This allows interacting with and retrieving artifacts from the Process Center by several developers for a given project rather having the project stored locally in a developer's Integration Developer workspace. The Process Center is the central repository to store, access, and manage process artifacts hold together as a single project called a process application.

In this exercise you will learn how to integrate a *Business Process Definition* into your human centric BPEL business process. The end result is the ability to work on both coaches and WebSphere Process Server human tasks in one task list widget within Business Space.

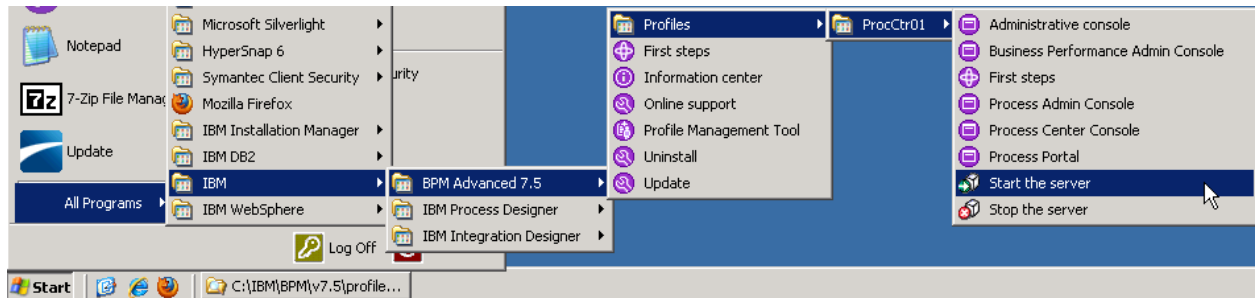
## Part 1: IBM Process Designer – Build a human centric process

In this part of the lab exercise, you will start the Process Center and open the IBM Process Designer to start the scenario

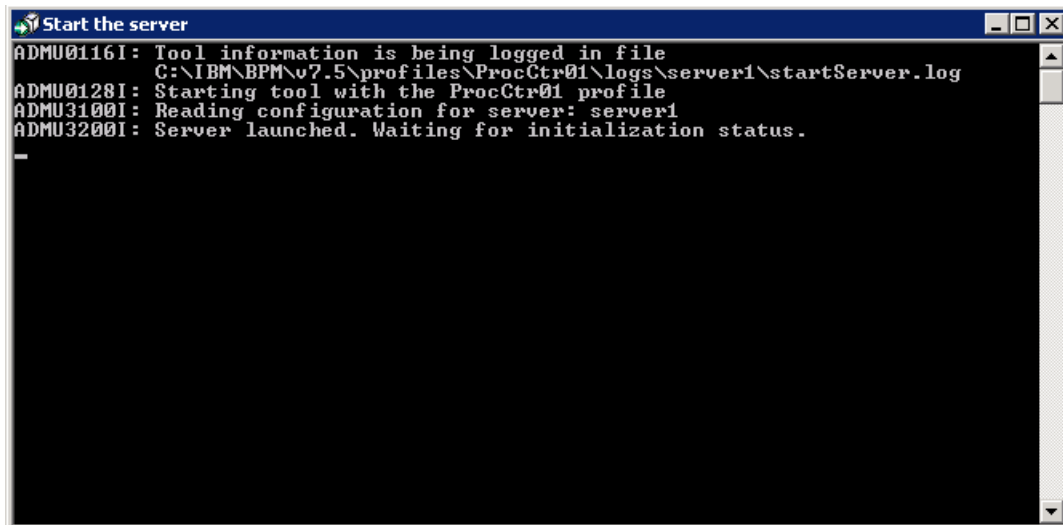
A basic outline of this part is:

- Start the Process Center server
- Open the Process Designer development environment
- Build a human centric business process definition (with a Coach)

- \_\_\_ 1. Start IBM Process Center V7.5.1  
 \_\_\_ a. Select **Start → Programs → IBM → BPM Advanced 7.5 → Profiles → ProcCtr01 → Start the Server**

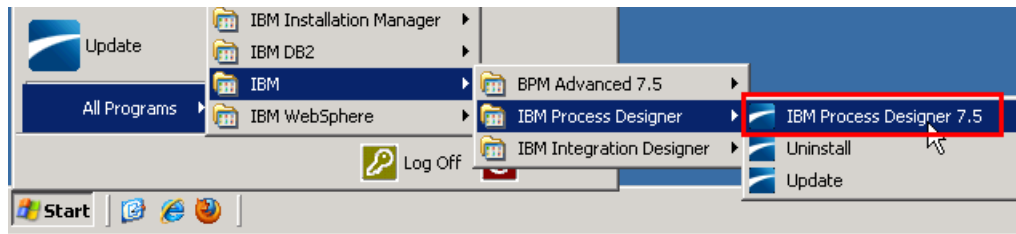


- \_\_\_ b. Wait for the server to start, which can take a few minutes. While it is starting, you should see this window:



- \_\_\_ c. When the server startup completes, you will see some additional messages in the window and then it will then close automatically. When the window disappears, you are ready to continue.

- \_\_\_ 2. Start Process Designer
  - \_\_\_ a. Select **Start → All Programs → IBM → IBM Process Designer → IBM Process Designer 7.5.**



- \_\_\_ b. Enter the credentials (admin/admin are the default credentials, enter appropriate credentials for your Process Center)  
User Name: **admin**  
Password: **admin**

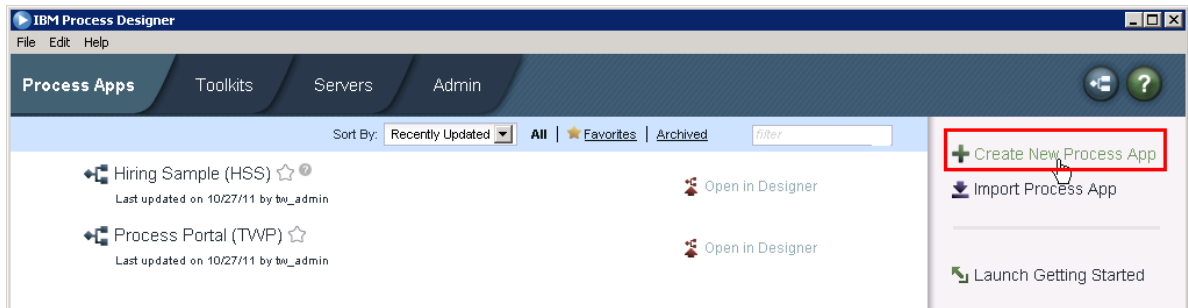
and then click the **Login** button.



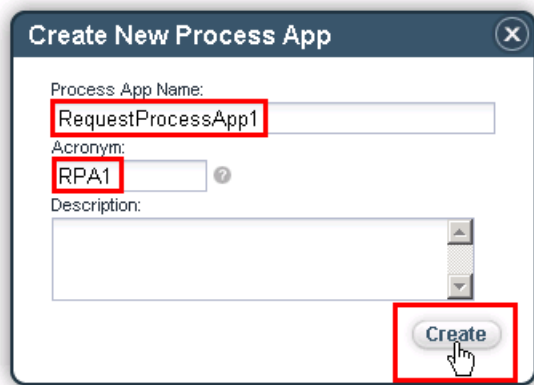
- \_\_\_ c. If this is the first time you launch the Process Designer, you may see a **SSL SIGNER EXCHANGE PROMPT** dialog pops up. This message occurs when the WebSphere Application Server SSL configuration has changed and the client does not trust the new or changed SSL certificate.

Just click **y** to add singer to the trust store.

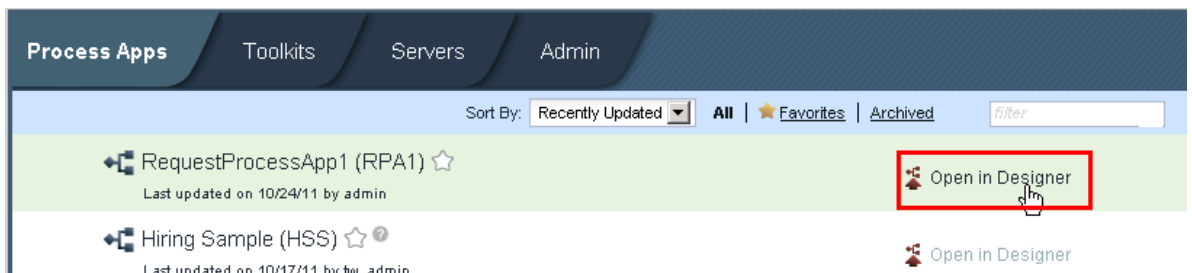
- 3. Create new process application and open in Designer
  - a. On the right side task menu select **Create New Process App**



- b. In the Create New Process App wizard, type in the Process App Name text box **RequestProcessApp1** and then **RPA1** in the Acronym text field. Click the **Create** button.

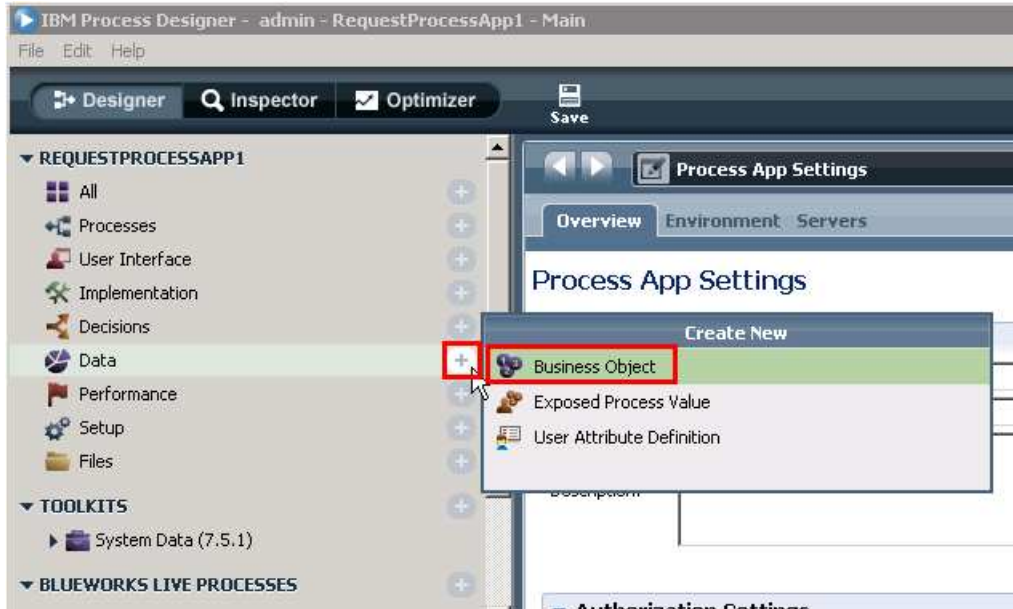


- c. The first entry should be the RequestProcessApp1. Click the **Open in Designer** link parallel to RequestProcessApp1.

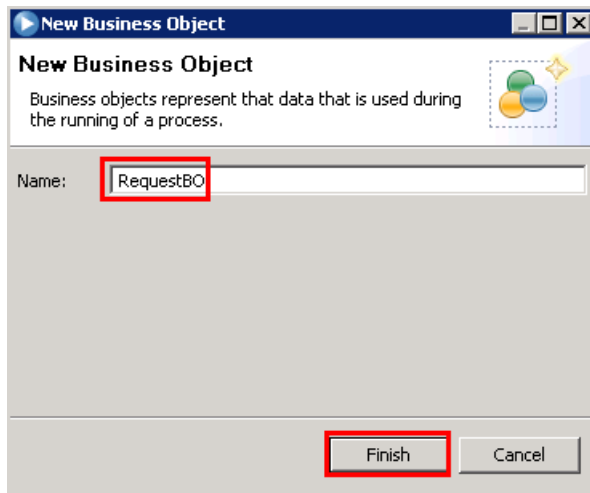


- \_\_\_ 4. Create a Business Object with parameters
  - \_\_\_ a. Once Process Designer is open, your first task is to define the business objects that will be passed in the process.

**Click the + sign icon next to Data** in the left side list of options to bring up the Create New menu. Click **Business Object**.



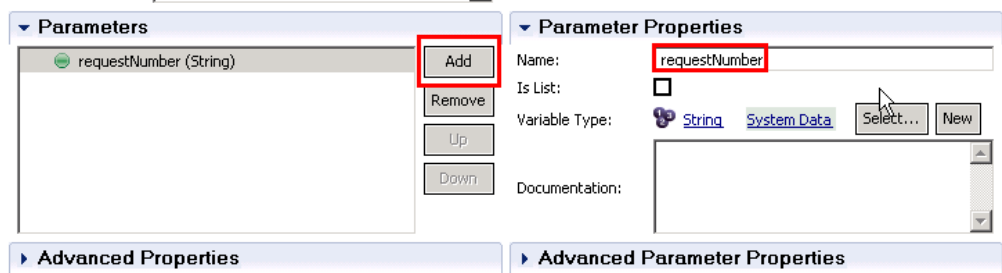
- \_\_\_ b. Name the new business object **RequestBO** and click the **Finish** button



- c. The Business Object editor opens. The main task in this editor is to define the structure and parameters to the business object. You will accept the default definition type of Complex Structure Type and add these parameters...

requestNumber (Integer)  
requestDescription (String)  
requestApproval (Boolean)

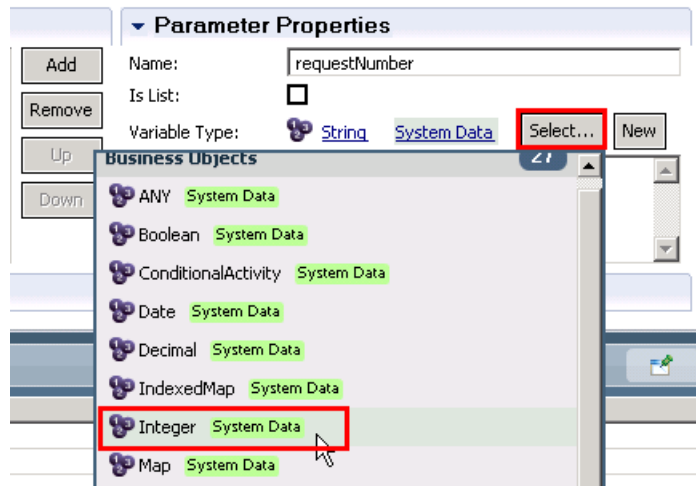
- 1) Click **Add** under Parameters and then type in **requestNumber** for the name in the parameter properties



- 2) Underneath the Parameter Properties section, you want to change the type of the parameter from the default string to an integer.

Click **Select** and then click **Integer** in the list

\*hint: you can start typing the name of the type that you want and the list will auto-filter

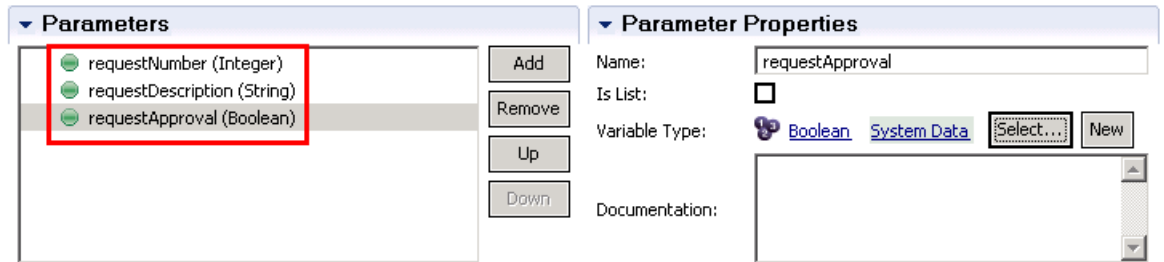


- 3) Repeat steps 1 and 2 from above (click Add button, name parameter, select parameter type) in order to add two more parameters.

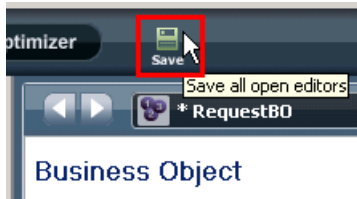
Click Add button, type requestDescription for the name and leave the default type of String.

Click the Add button, type requestApproval for the name. Click the Select button for the parameter type and click Boolean.

At the end you should see these three parameters

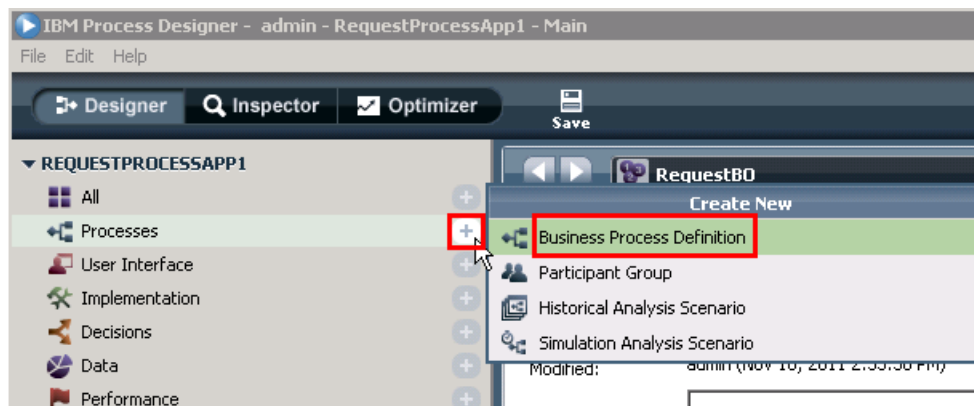


- 4) Click **Save** to save the Business Object and its parameters.



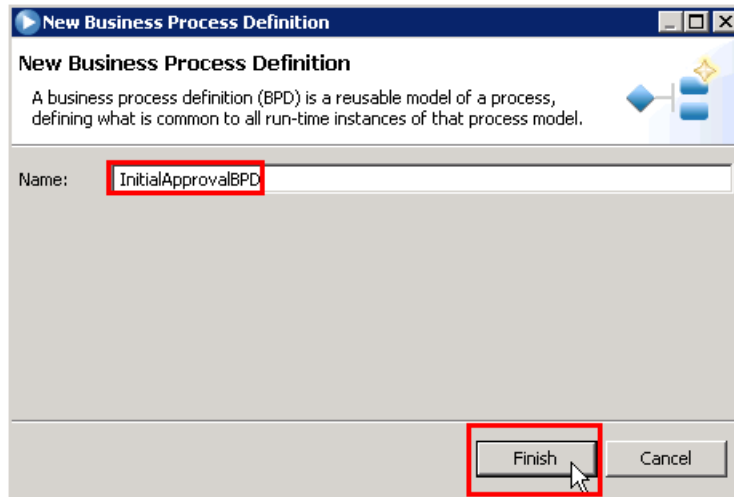
- \_\_\_ 5. Create a Business Process Definition (BPD) to wrap the initial approval coach.

- \_\_\_ a. Click the **+** sign next to **Processes** and click **Business Process Definition**

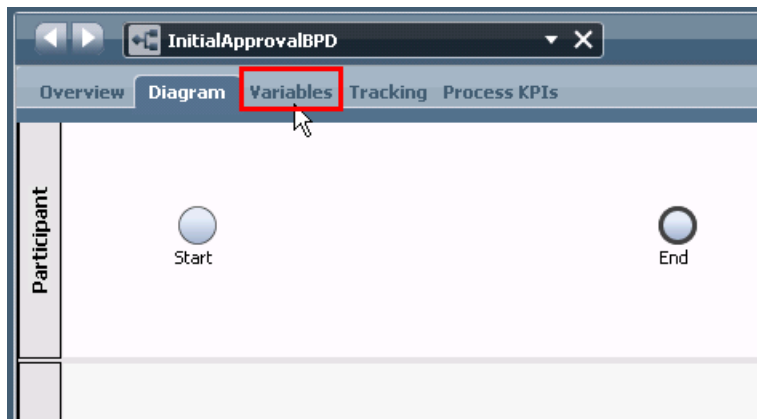




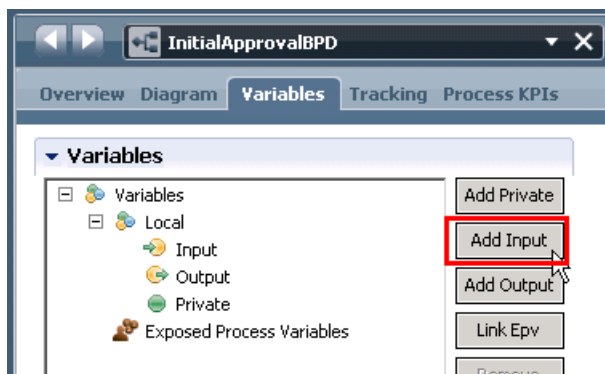
- \_\_\_ b. Enter **InitialApprovalBPD** for the name of the new Business Process Definition. Click **Finish** button.



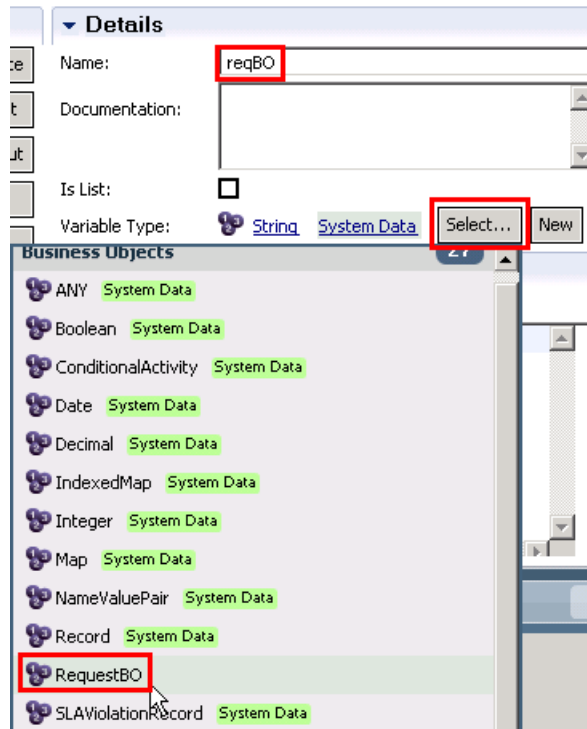
- \_\_\_ c. The BPD Diagram opens, however the first thing you need to do is set the data that the BPD will be transferring through the process. In order to take action on setting the data, click the **Variables** tab to add input and output variables.



- \_\_\_ d. Under the Variables tab, click **Add Input**.

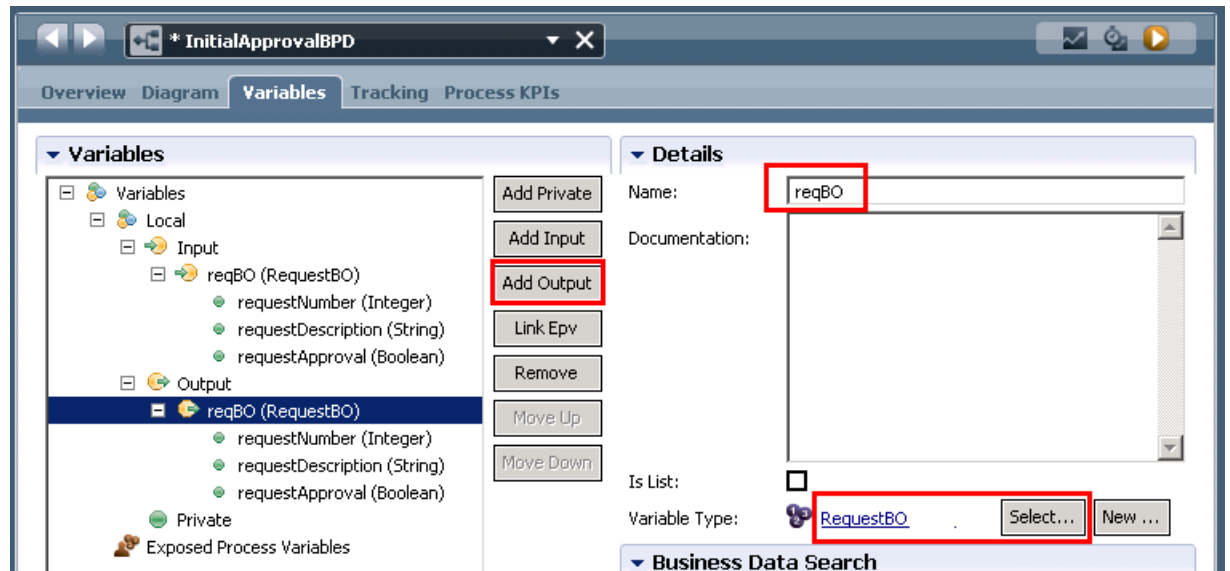


\_\_\_ e. Type **reqBO** for the name, click **Select...**, and click **RequestBO**

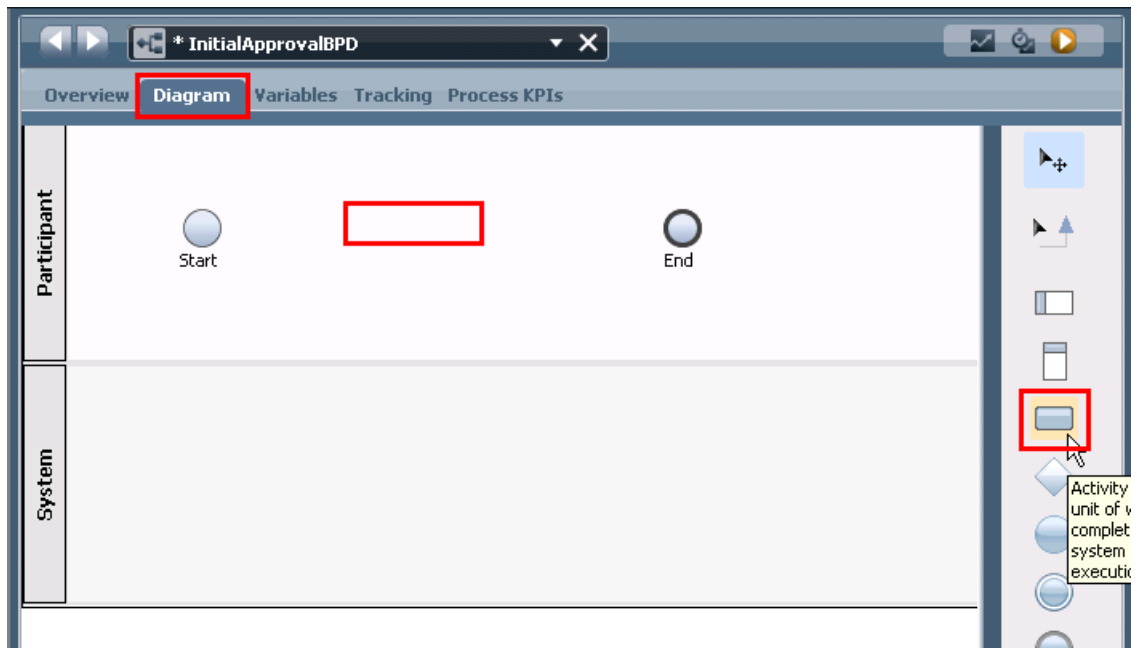


\_\_\_ f. Click **Add Output**, and again type in **reqBO** for the name (since in this process you want to pass the same data through the process), click **Select...** and click **RequestBO** again.

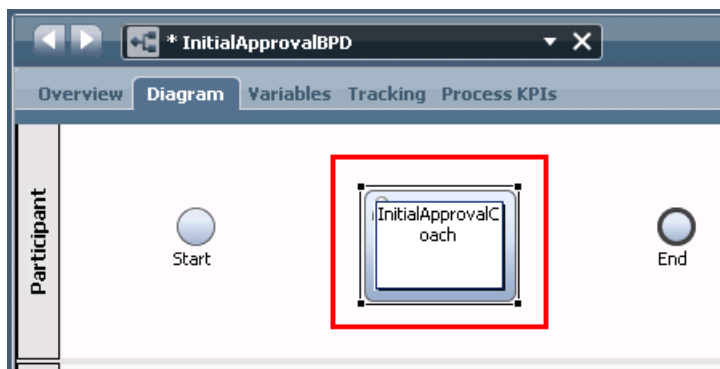
Your BPD input and output should now look like this:



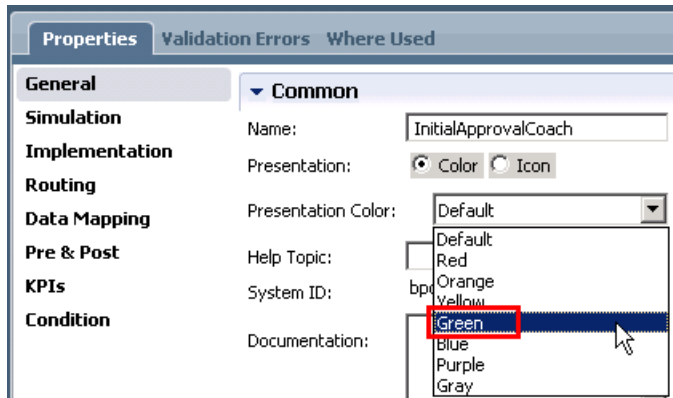
- g. Click back on the **Diagram tab** and click the **Activity** icon from the palette on the right. Click in the middle of the editor between the Start and End activities in the Participant swim lane.



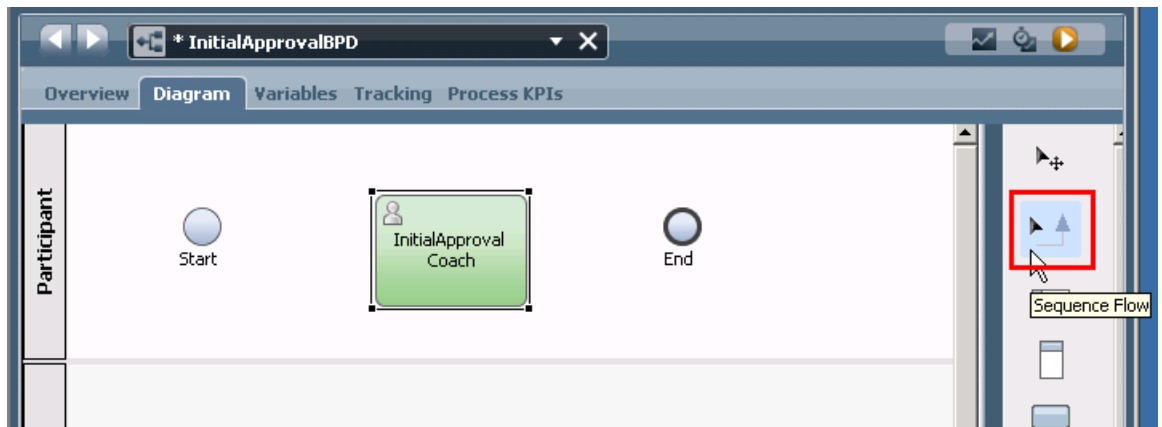
- h. This action will drag an Activity and drop it onto the BPD editor. Once the activity is dropped on the editor, the direct name editor highlights the default "Untitled" name, enter "InitialApprovalCoach" as new name.



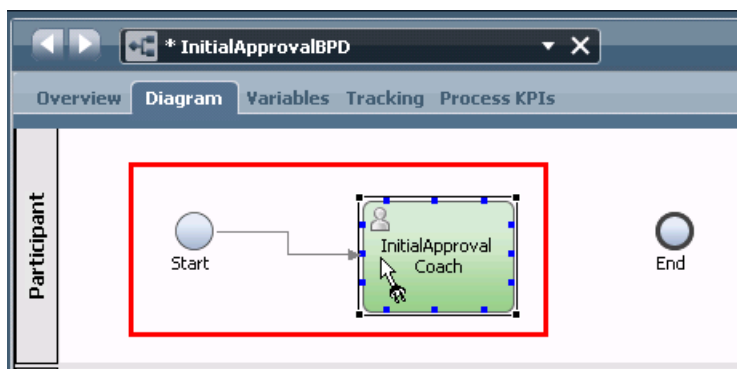
- \_\_\_ i. In the properties tab at the bottom of Process Designer, change the presentation color to **Green**.



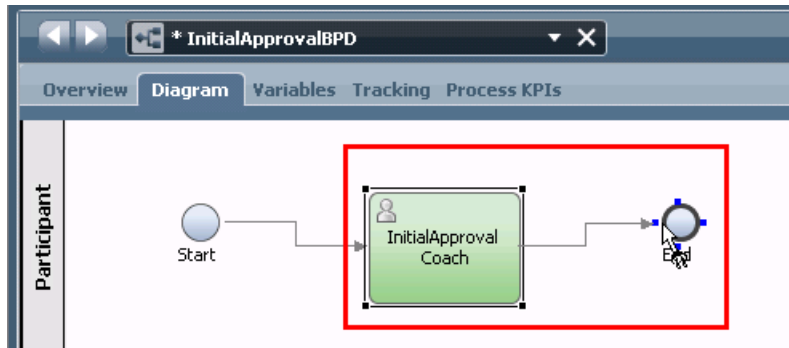
- \_\_\_ j. Once you have set the properties, it is time to connect or wire the business process together. Select the **Sequence Flow** icon in the palette on the right.



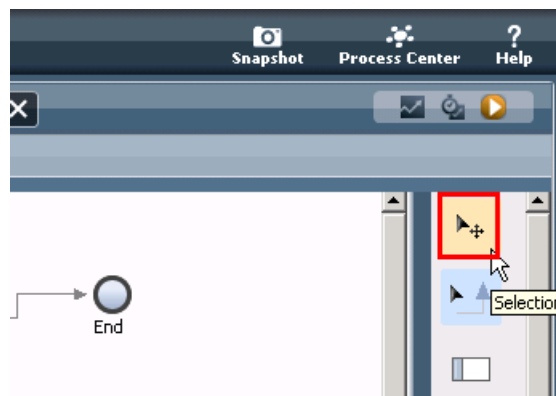
- \_\_\_ k. Click the right side of the **Start** icon to start the wire, then move the pointer to the left side of the **InitialApprovalCoach** and click to complete the wire, connecting the two.



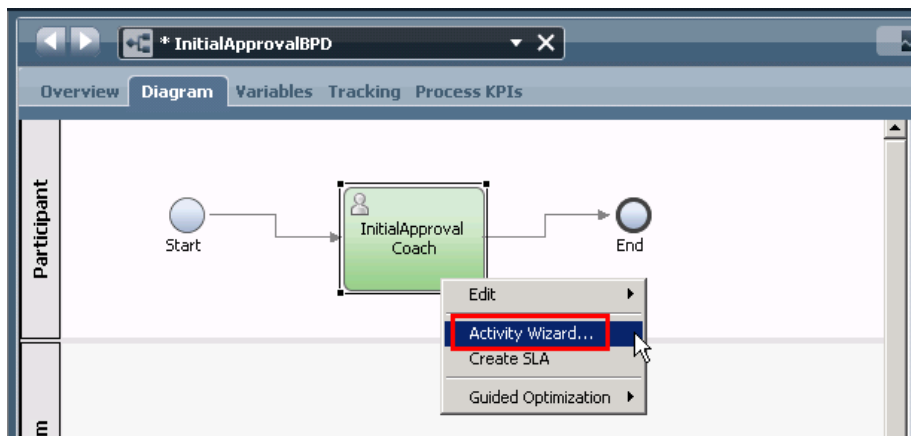
- \_\_\_ l. In the same fashion, click the right side of the **InitialApprovalCoach** and then the left side of the End icon.



\_\_ m. Click the **selection tool** to be able to select items in the editor and to prepare for the next step



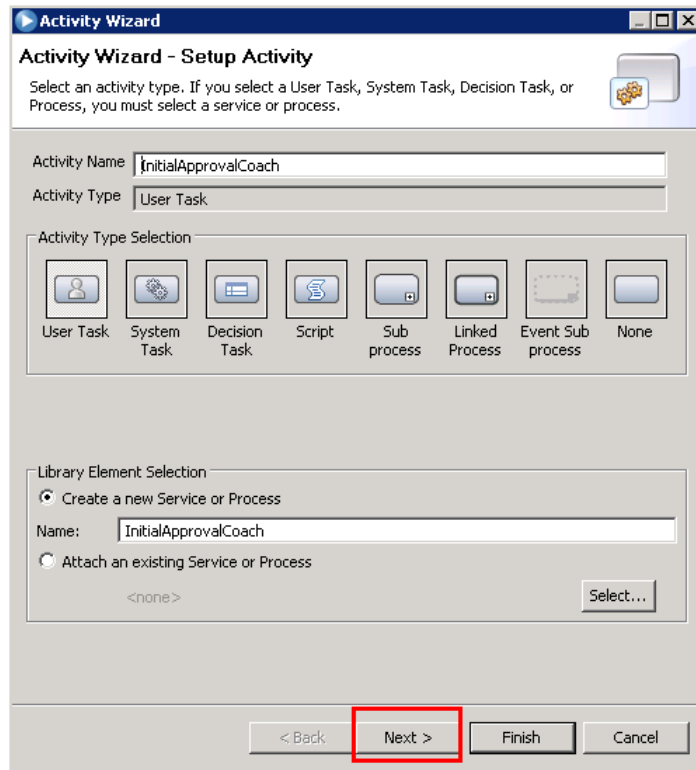
\_\_ n. Right-click **InitialApprovalCoach** and select **Activity Wizard...**



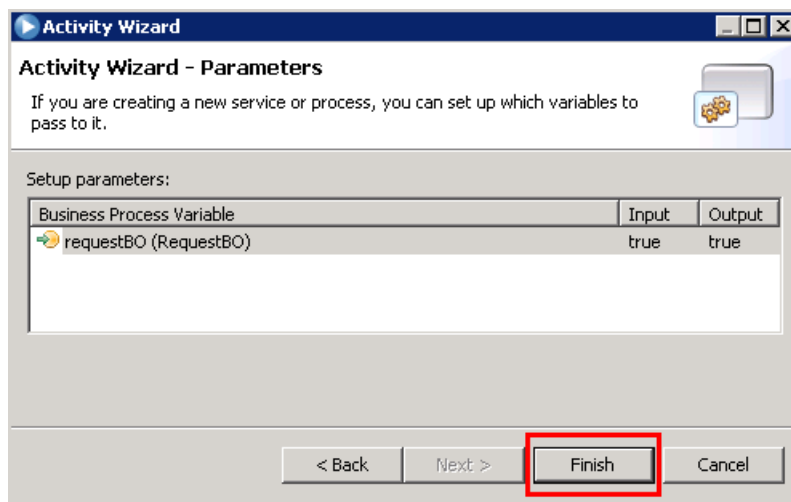
\_\_ o. Since you named the Activity appropriately in the previous step, you will see that the Activity Name and New Service Name are already filled in.

For the **Activity Type**, you will leave the default of a **User Task** because you want this initial approval to be approved by a human being and not automated with a business rule.

For the **Library Element Selection**, leave the default of **Create a New Service or Process** selected because you want to create this new initial approval coach. Click **Next**.



- \_\_\_ p. The second screen of the Activity Wizard is where you need to define the business objects that a BPD will use before designing the process. The input and output business objects have already been defined in the wizard due to your previous work. Leave the defaults of the inputs and outputs both being true for this business activity since you want the business object to be passed into the activity and out of the activity. Click **Finish**.

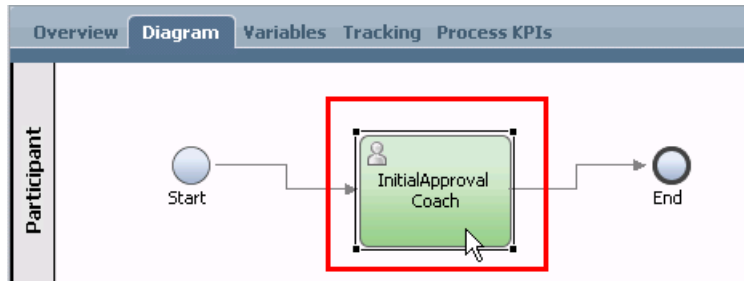


NOTE: You can click the “true” to change to false if needed. It is not needed in this scenario.

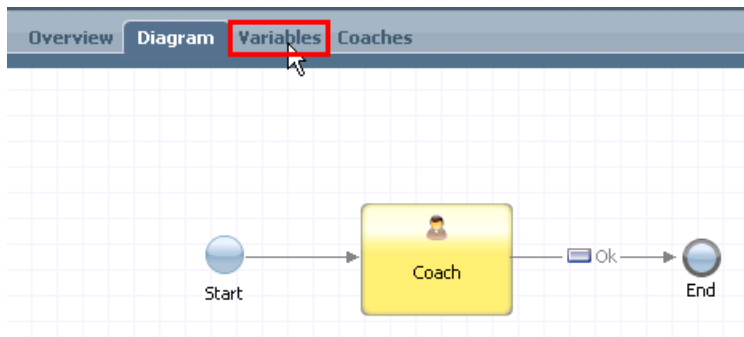
- \_\_\_ q. In the Properties view, click the Data Mapping tab. The Activity Wizard should automatically generate the mapping for both **input** and **output**.



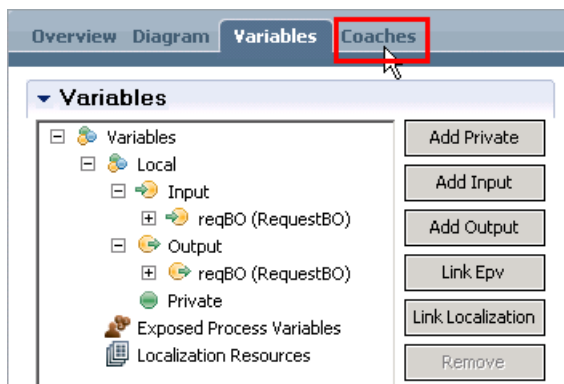
\_\_ r. Double click the **InitialApprovalCoach** activity to look at the Coach



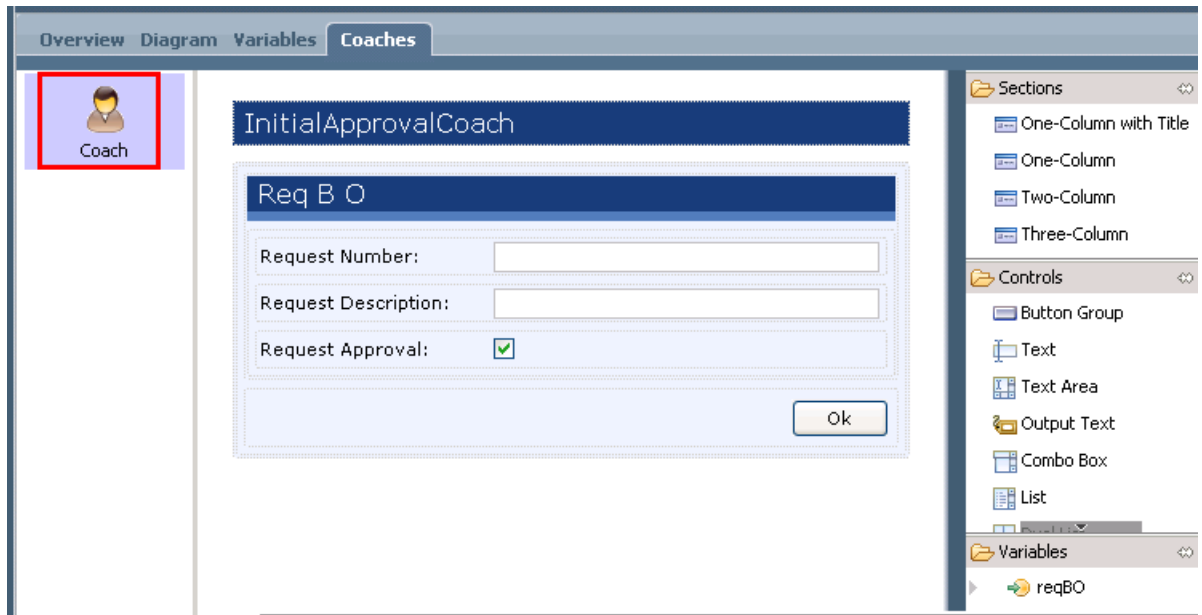
\_\_ s. The Activity added one Coach. Take a look at variables that will end up passing through the Coach by clicking on the **Variables** tab.



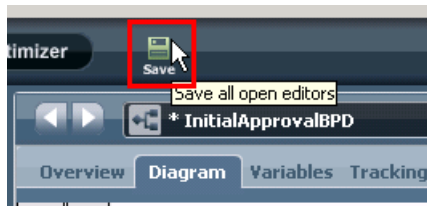
\_\_ t. In the variables tab, you will notice the same input and output variables you defined for the BPD. Take a look at what the coach will look like by clicking on the **Coaches** tab.



\_\_ u. On the Coaches tab, click the **Coach** icon on the left of the editor to see and customize your human task form. (it may take a few seconds for the human task form to appear)

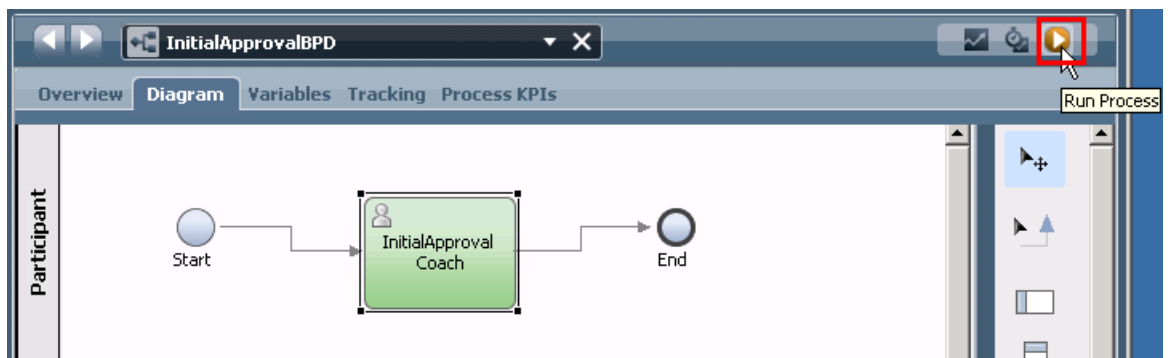


\_\_\_ v. Click the **Diagram** tab, and then click **Save**



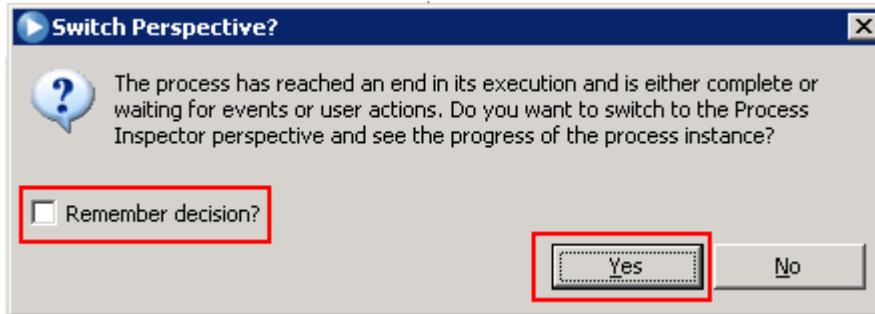
You are now done with building a Business Process Definition that has one human service (coach).

- \_\_\_ 6. Test the BPD before integrating into a BPEL process
  - \_\_\_ a. Click **Run Process** to playback your current BPD.

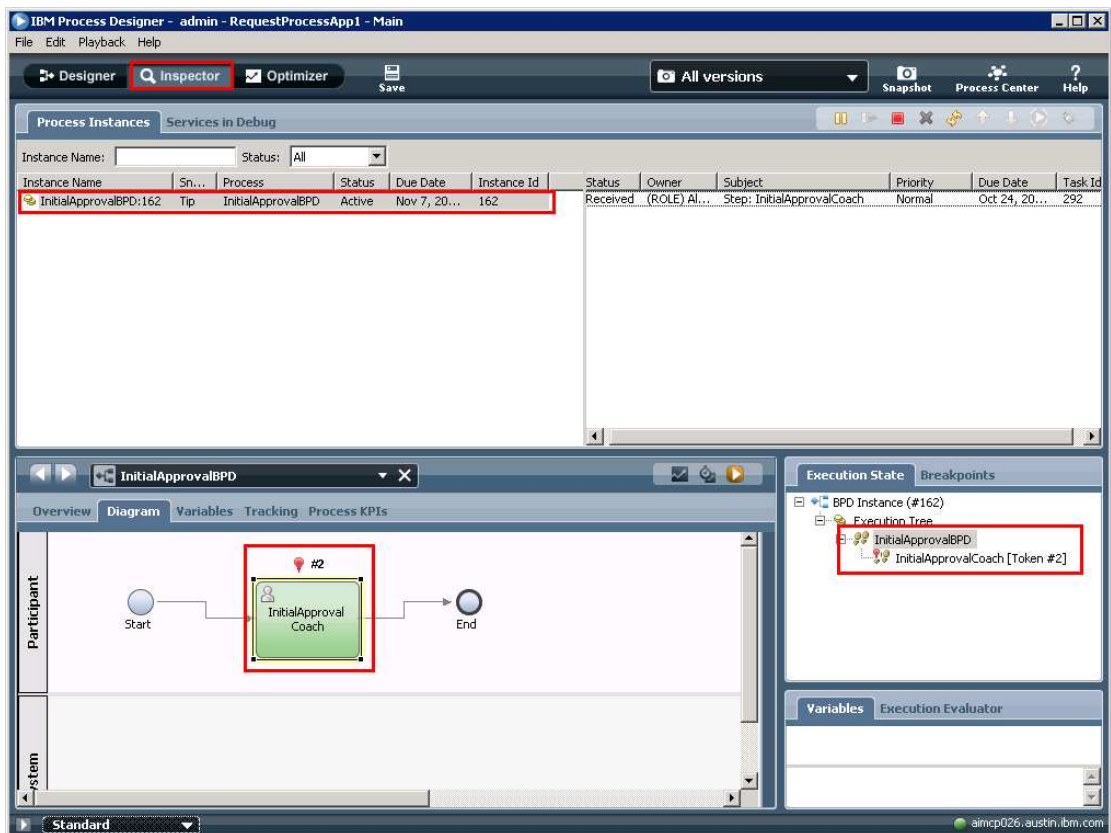


\_\_\_ b. On the **Switch Perspective?** pop-up dialog select **Yes**. You also check **Remember decision?** if you want to switch to Inspector view for all BPD tests in the future.

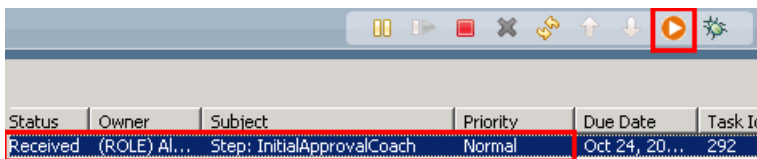




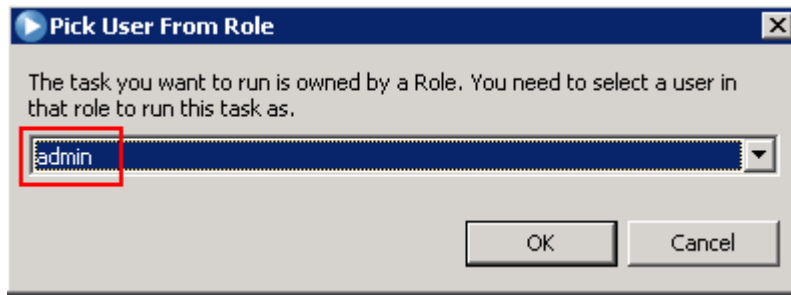
After you click **Yes** the **Inspector** view will open



\_\_\_ c. In the task list select the **InitialApprovalCoach** task and click **Run the selected task** icon.



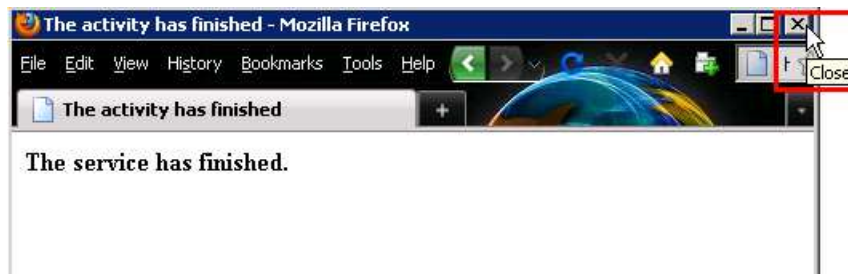
\_\_\_ d. Select the user that should execute this task. For the purposes of this lab, select **admin** and **select OK**.



- \_\_\_ e. A browser pops up to enter the request details. Enter **1** for the requestNumber, **test** for requestDescription, and leave the requestApproval unchecked. Click **OK**.



- \_\_\_ f. Close the browser window by clicking the **X button** at the top right of the browser.



- \_\_\_ 7. You are finished building your BPD and Coach. You are ready to close Process Designer and open IBM Integration Designer to build and associate the BPEL that will call this BPD.

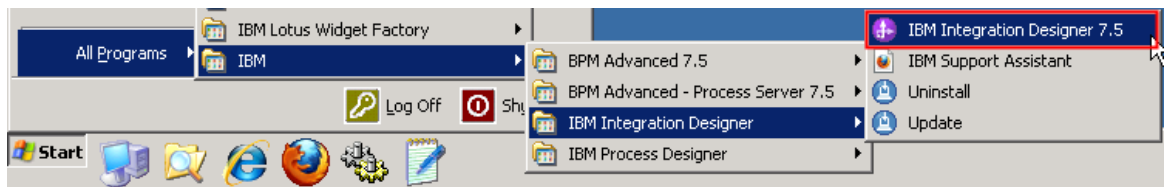
Close IBM Process Designer by clicking the **X button** at the top right.

## Part 2: IBM Integration Designer – Implementing the human-centric process application

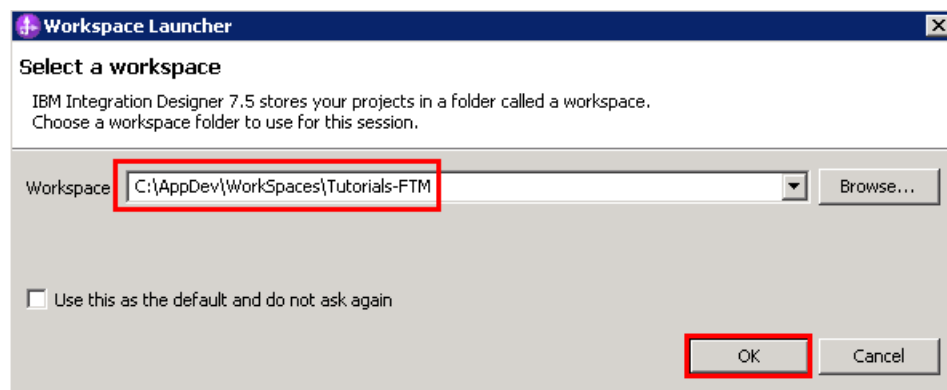
In this part of the lab exercise, you play the role of the integration developer, Igor, and work within the IBM Integration Designer development environment. A basic outline of this part is:

- Start IBM Integration Designer, connect to Process Center, and import Process App
- Create a human centric BPEL application to call both a BPD and Human Task.
- Synchronize with Process Center

1. Start IBM Integration Designer in a new workspace, connect to the Process Center and import the Process App
  - a. Start IBM Integration Designer by selecting **Start → All Programs → IBM Integration Designer → IBM Integration Designer 7.5**.



- b. In the Workspace Launcher dialog, enter **C:\AppDev\WorkSpaces\Tutorials-FTM** for the workspace location and select **OK**.



When opening with a new workspace, Integration Designer will initially open to the default Business Integration perspective but quickly switches to the Process Designer perspective in order to login to the Process Center. Logging into the Process Center first is important because you need to connect to the Process Center in order to have a target for where your work will be published. The Process Center server must be running to perform this step.

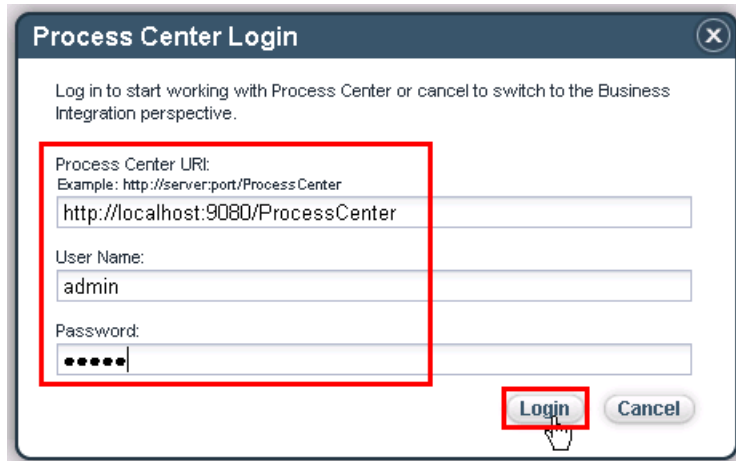
NOTE: The Process Center perspective in the Integration Designer is the integration developers' interface to the Process Center. When a process application is opened in the Integration Designer workspace, it is represented from the implementation point of view. This is different than the process application representation from the modeling point of view when it is opened in the designer view of the Process Designer.

- c. **Type the following URL and credentials** into the Process Center Connection Details prompt and **click Connect button**: (enter the appropriate URL and credentials for your Process Center)

Process Center URL: <http://localhost:9080/ProcessCenter>

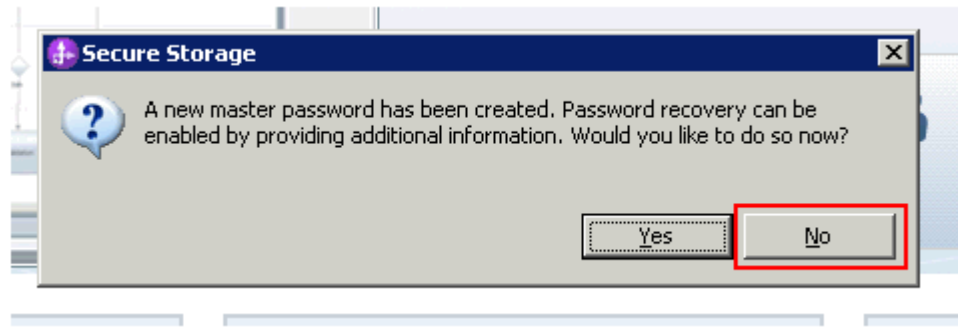
Username: admin

Password: admin

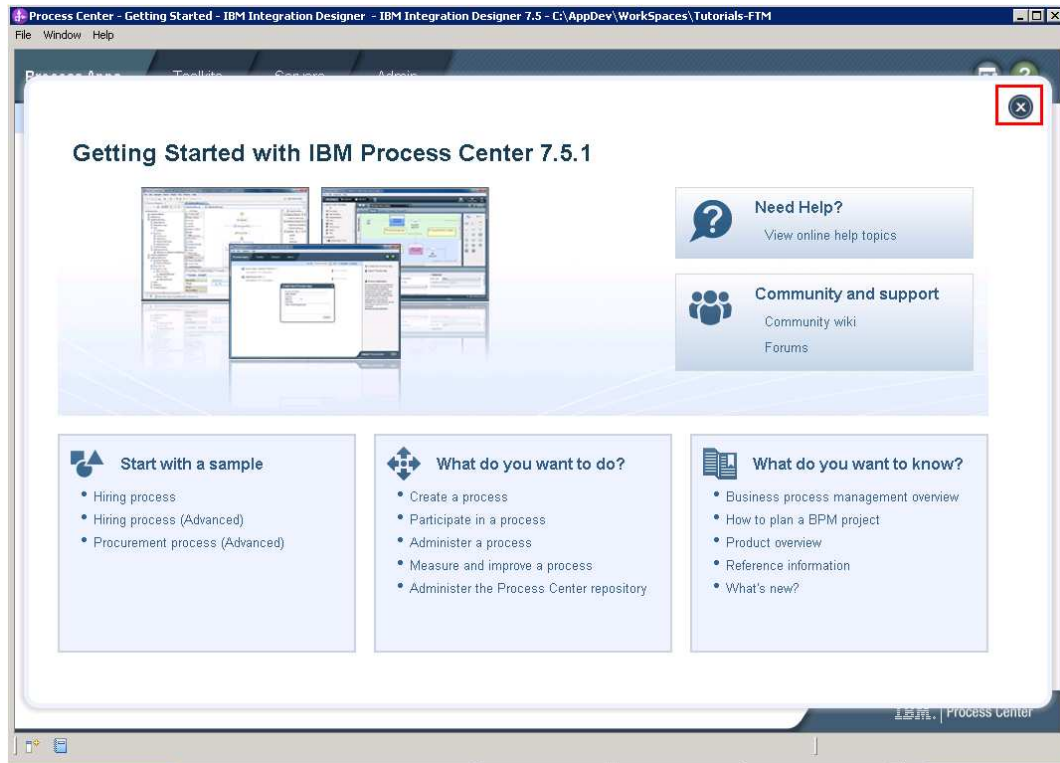


---

Note: If you see **Security Storage** dialog after clicking **Connect**, select **No**.

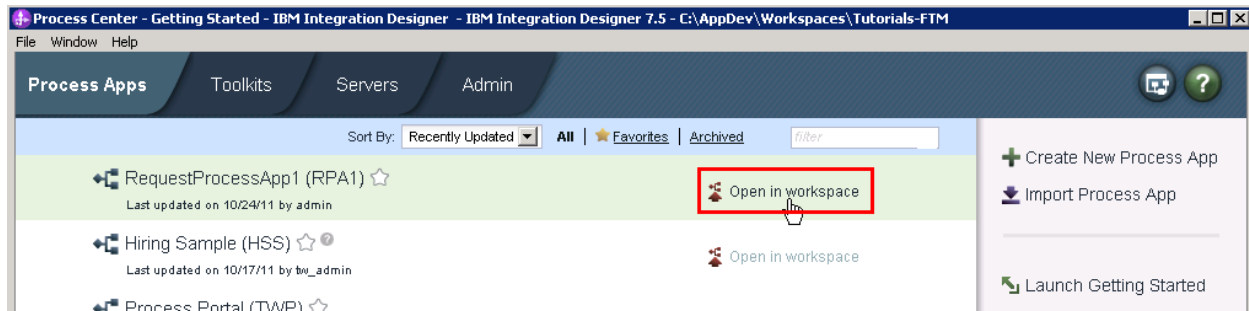


- \_\_\_ d. Click the **X** on the welcome dialog in the Process Center perspective to close the welcome dialog.

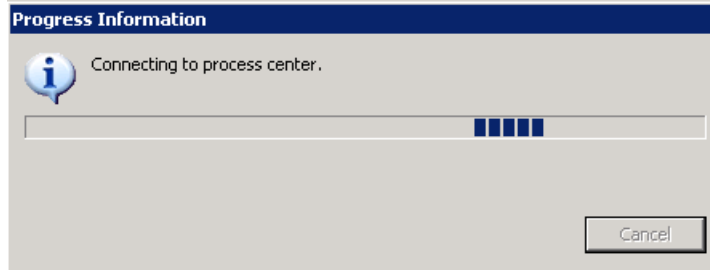


- \_\_\_ e. This next step is important. There will be a good amount of work going on in the background after your selection

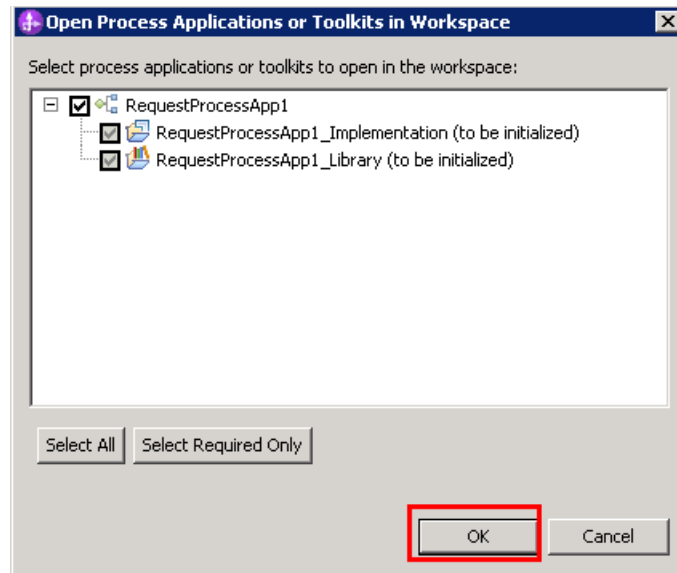
Click the **Open in workspace** link parallel to RequestProcessApp1 (RPA1).




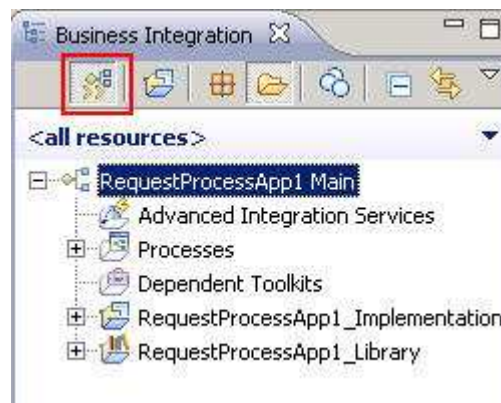
What this action does is connect to the Process Center and imports content from the process application you created in the previous step. You will see the following dialog while the import takes place



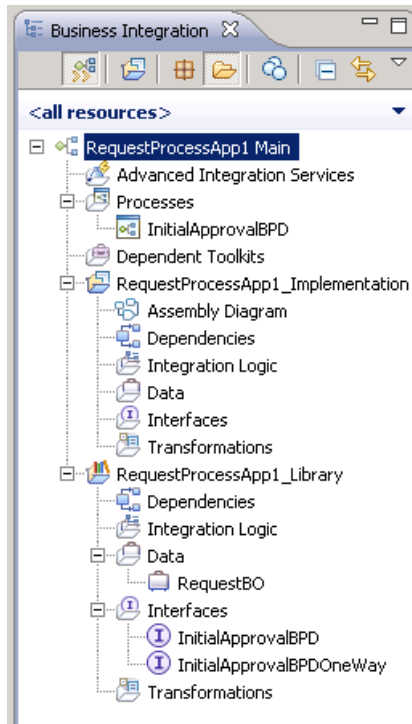
- \_\_\_ f. You will be prompted to choose which Process Applications or Toolkits associated with the **RequestProcessApp1** you want to open in the workspace. Keep defaults and click **OK** button.



- \_\_\_ g. Ensure to select  to switch to **detailed mode**. This step is important to be able to work with BPEL content.

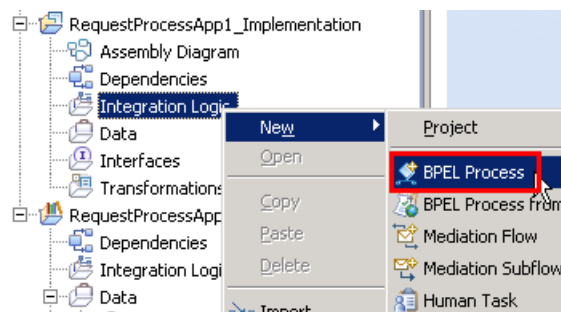


\_\_\_ h. Inspect what was imported

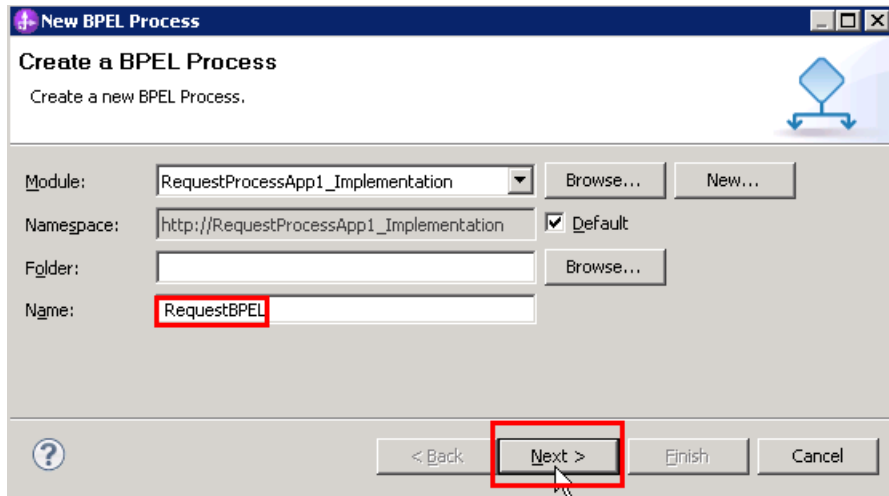


Process application is the top-level project  
 No Advanced Integration Services (AIS) or dependent toolkits in this scenario.  
 BPD was imported successfully as part of the process application.  
 The process application has two automatically generated projects.  
 RequestProcessApp1\_Implementation will hold the BPEL.  
 RequestProcessApp1\_Library holds the interface and business objects used by the implementation project.

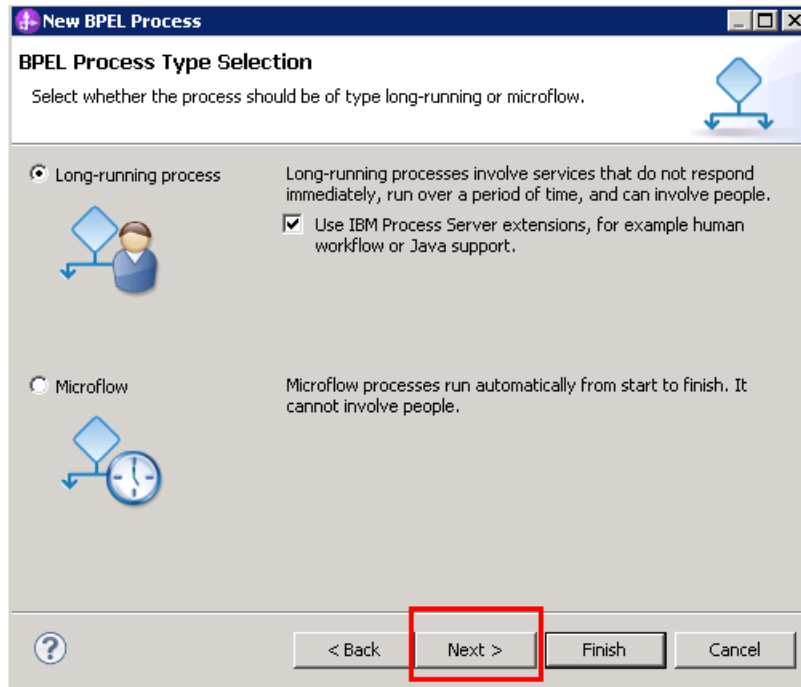
- \_\_\_ 2. Create a human centric BPEL application to call both a BPD and human task.
  - \_\_\_ a. Right click **Integration Logic** beneath **RequestProcessApp1\_Implementation** and select **New > BPEL Process**



\_\_\_ b. Enter **RequestBPEL** as the Name and click **Next**.

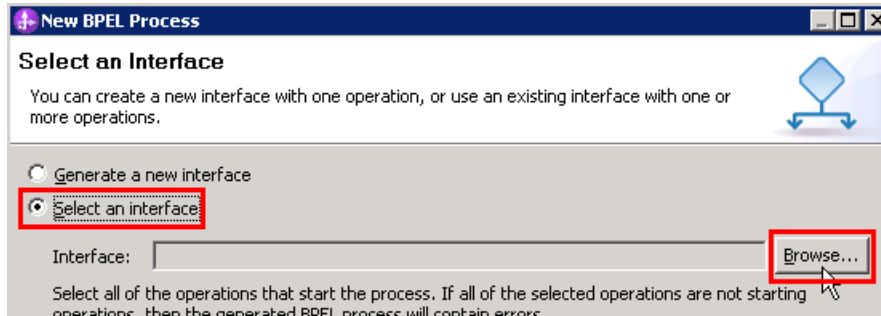


\_\_\_ c. Click **Next** to keep the default of a long-running process for this example.

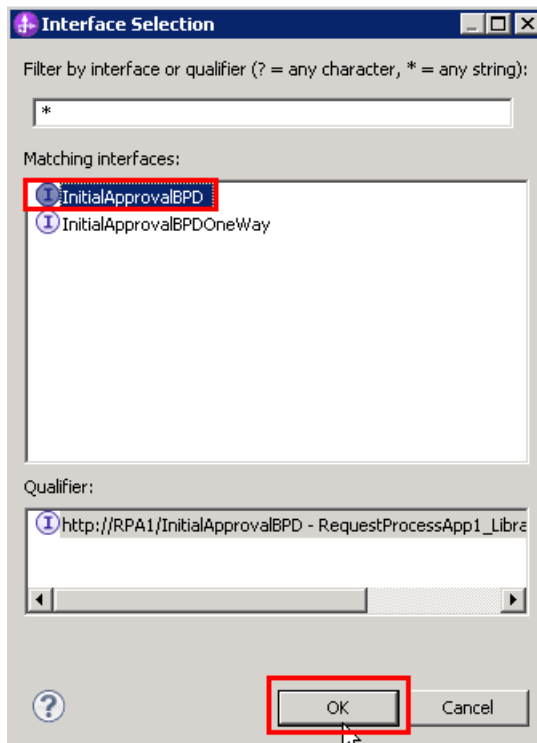




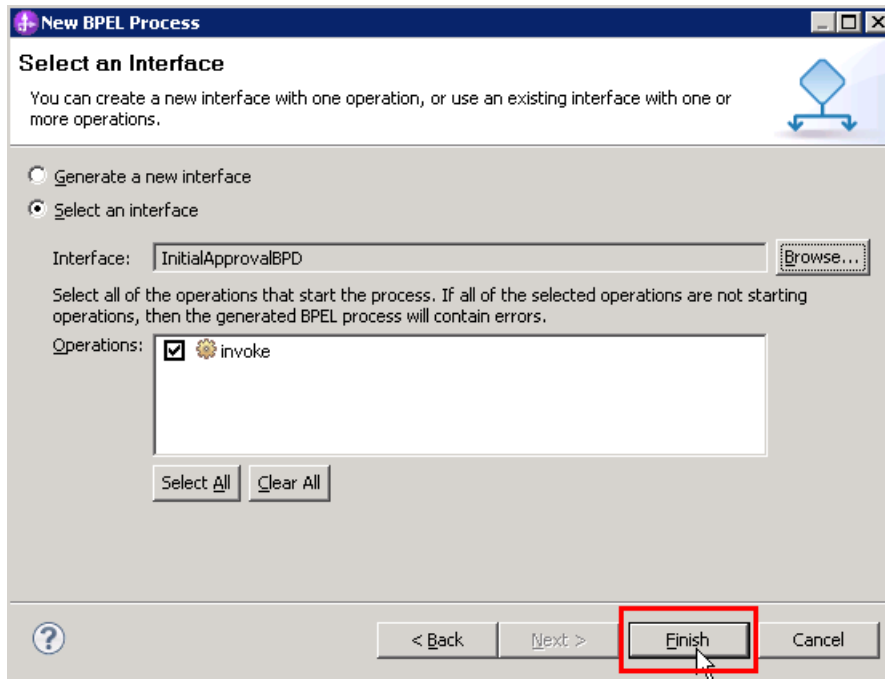
- \_\_\_ d. For this BPEL process, you want to use the interface that was imported from Process Center. Select the **Select an interface** option and click **Browse** button to find the interface.



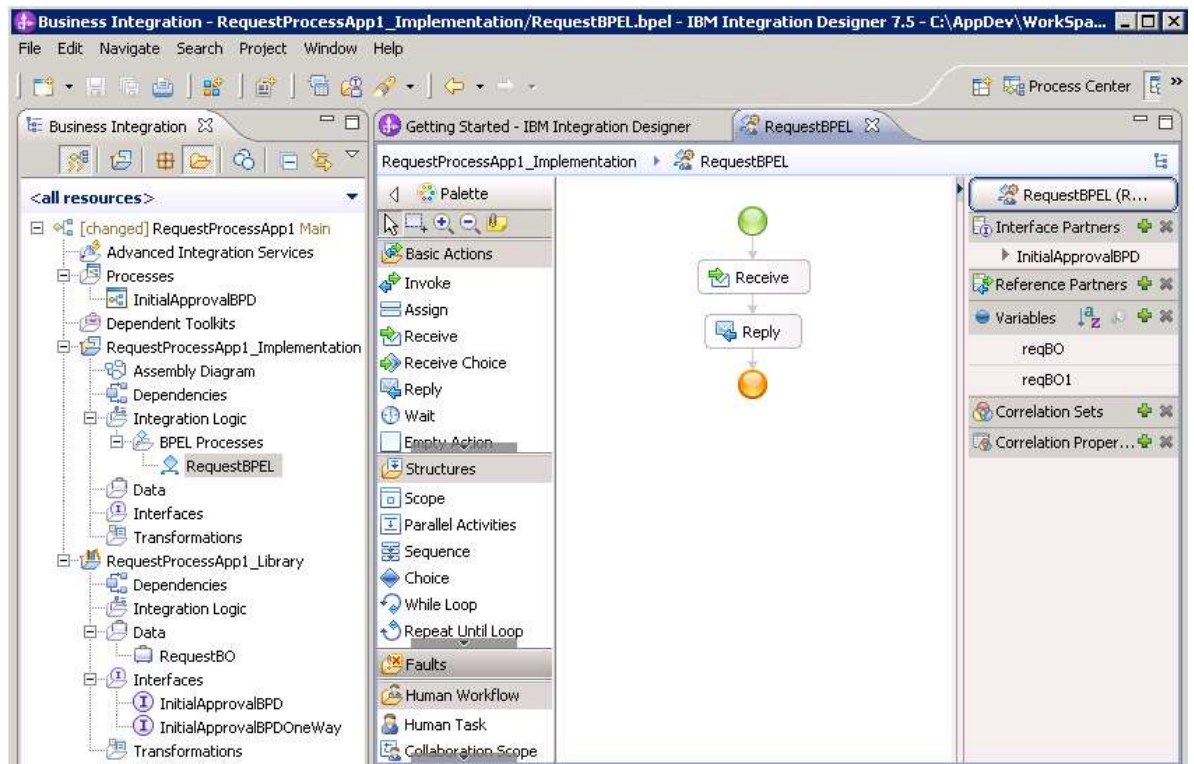
- \_\_\_ e. Select the **InitialApprovalBPD** interface and click **OK**.



\_\_\_ f. Click **Finish** to finish selecting InitialApprovalBPD interface.

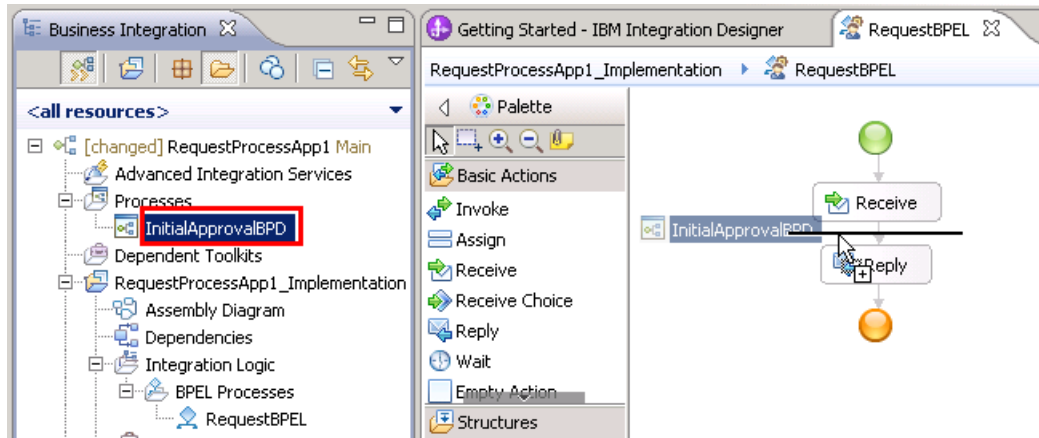


\_\_\_ g. Inspect what was generated

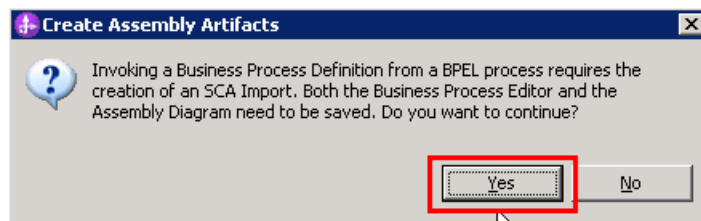


\_\_\_ 3. Drag and drop the BPD into BPEL

- \_\_\_ a. Click and drag the **InitialApprovalBPD** in the Business Integration view to the BPEL diagram and unclick between the Receive and Reply activities.

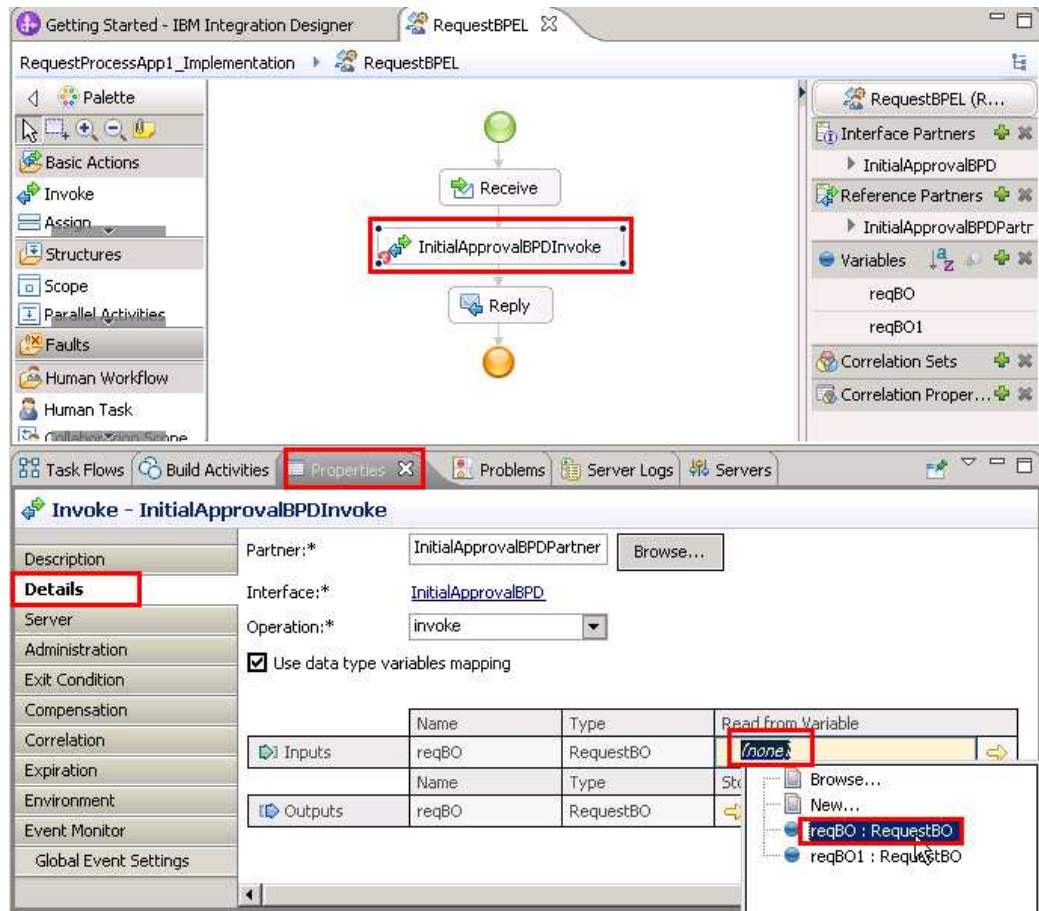


- \_\_\_ b. Click **Yes**

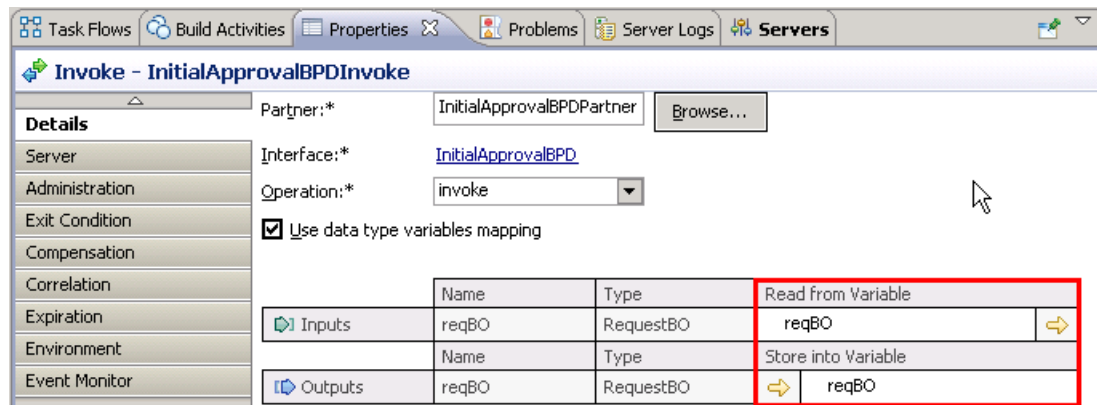


- \_\_\_ c. Error markers appear after the project builds because the input and output variables have yet to be identified, similar to Process Designer where you defined the input and output parameters for the BPD.

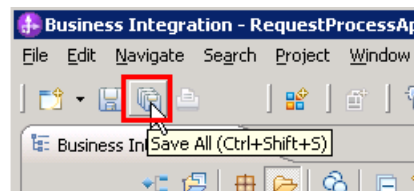
Select the **InitialApprovalBPDInvoke** → **Properties** → **Details** → **Inputs** → **Read from Variable** and then click **none**. Change to **reqBO** because you want to pass through the same business object throughout this example process.



Set the output to **reqBO** as well. Now you should have this...

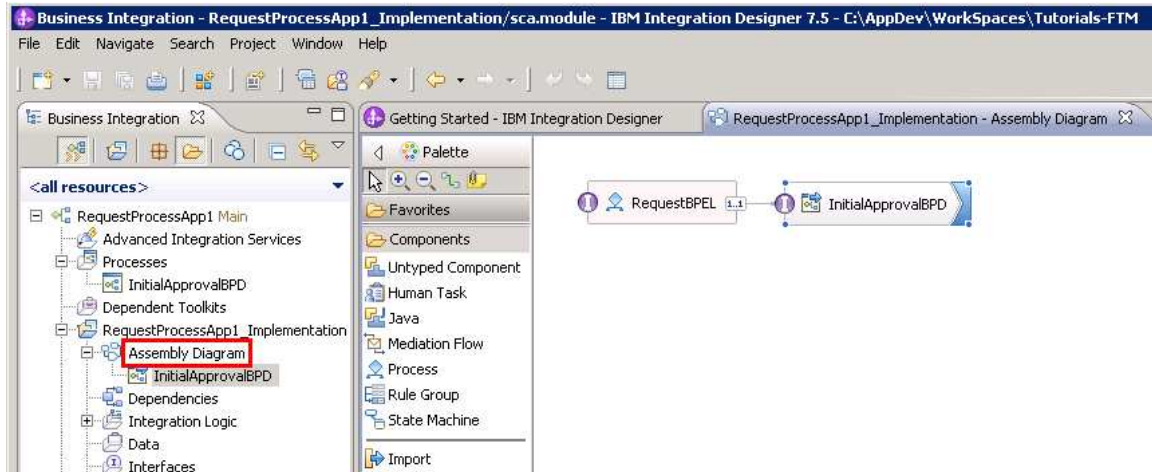


\_\_\_ d. Save the BPEL in order to clear the error markers.

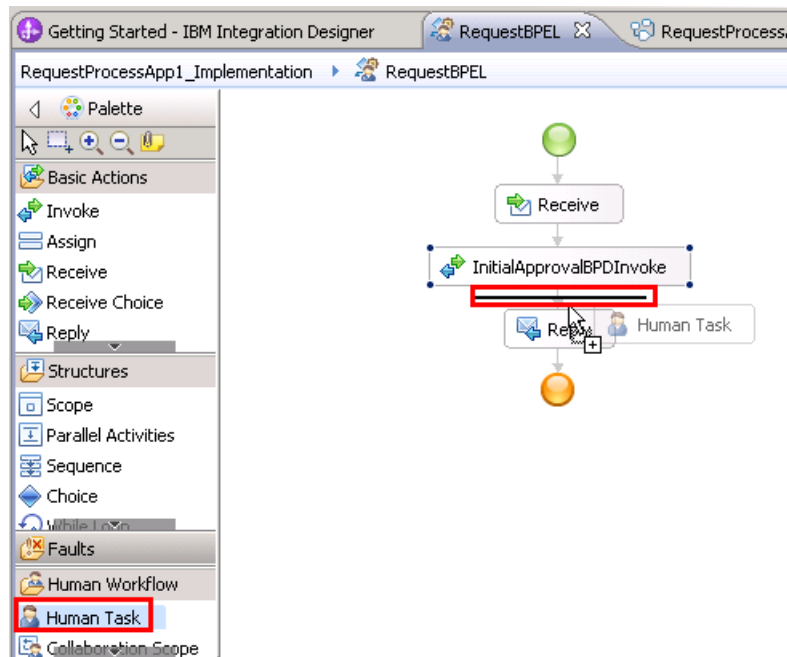


4. See what was generated for you in the Assembly diagram. Double click **Assembly Diagram** in the Business Integration view.

An SCA component for the BPEL and a matching SCA Import for the BPD you are calling within the BPEL, both with the InitialApprovalBPD interface.

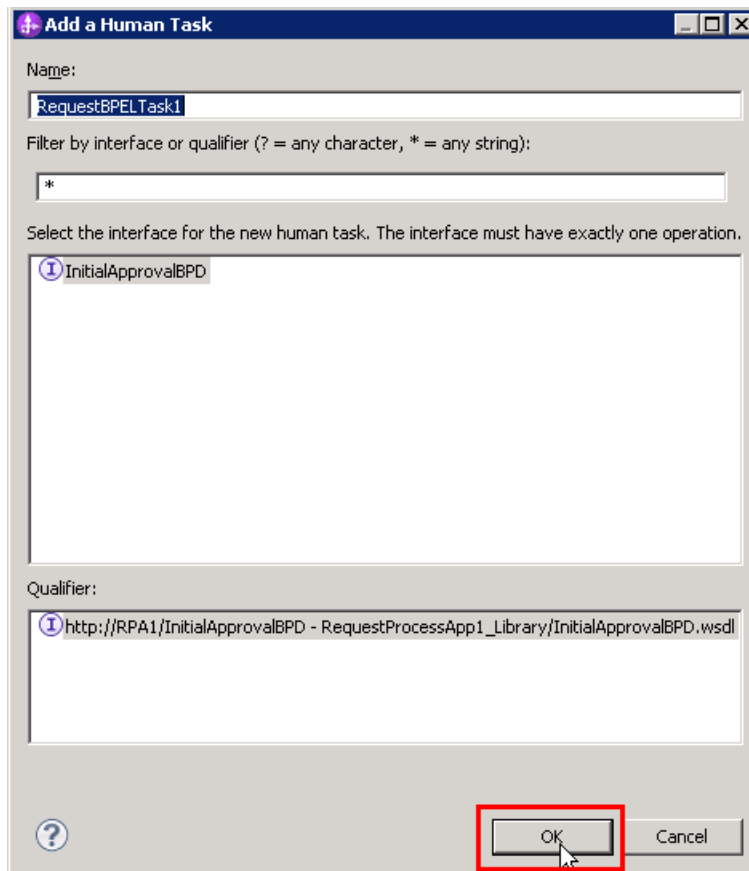


5. Add an inline human task to the BPEL process
- a. Click the **RequestBPEL** tab to return to the BPEL editor.
  - b. Click **Human Task** in the BPEL Editor palette, drag to BPEL flow, and release between InitialApprovalBPDInvoke and the Reply activity

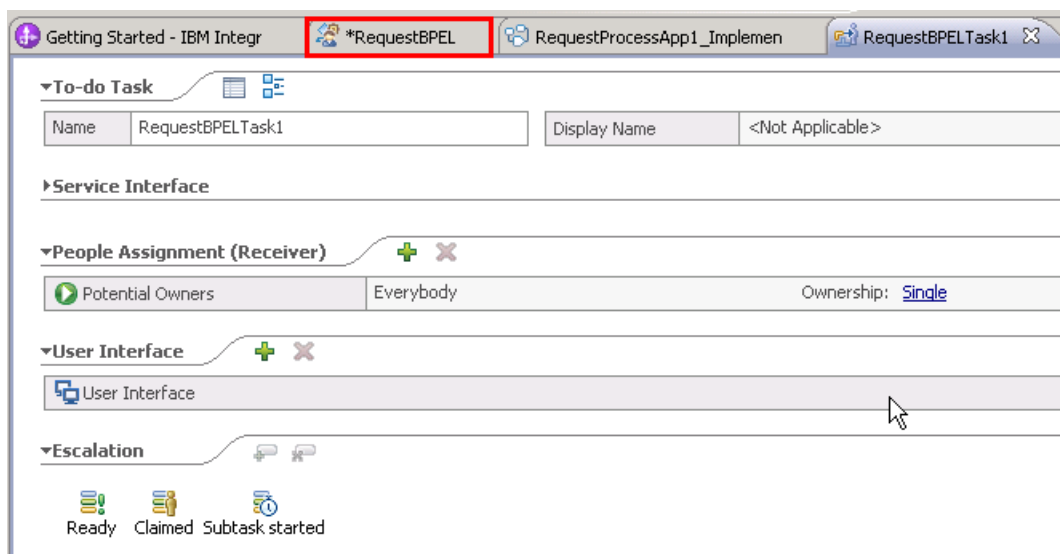


\_\_\_ c. The **Add a human task** wizard prompts you for an appropriate name and for the interface.

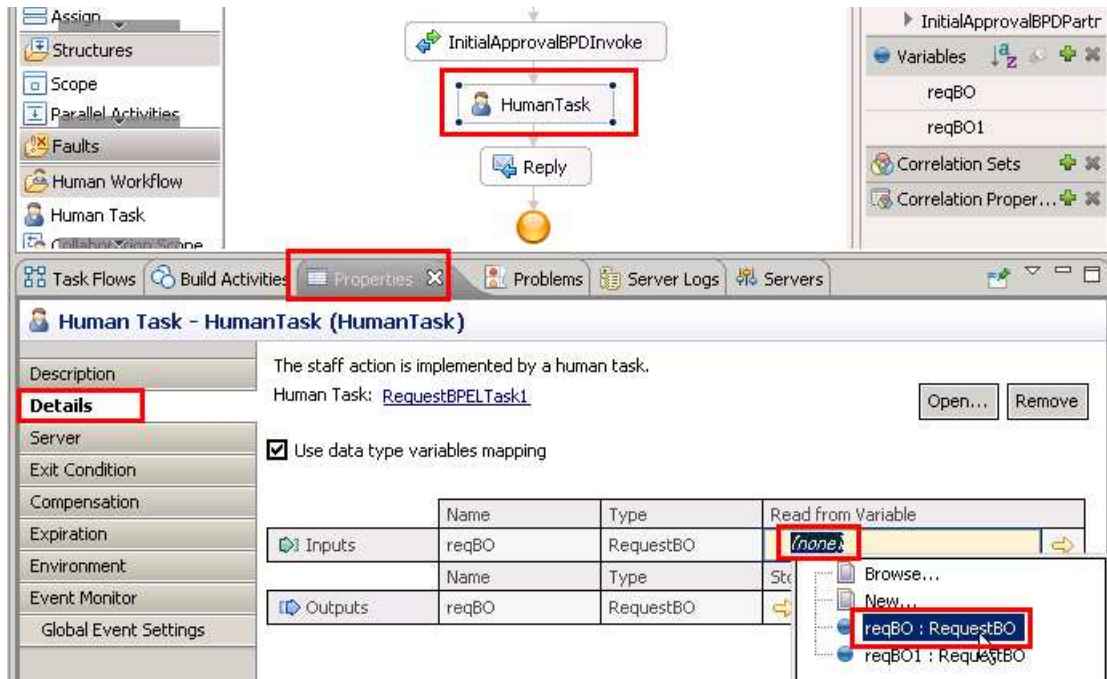
Accept the generated name RequestBPELTask1, clicking **OK** at the prompt



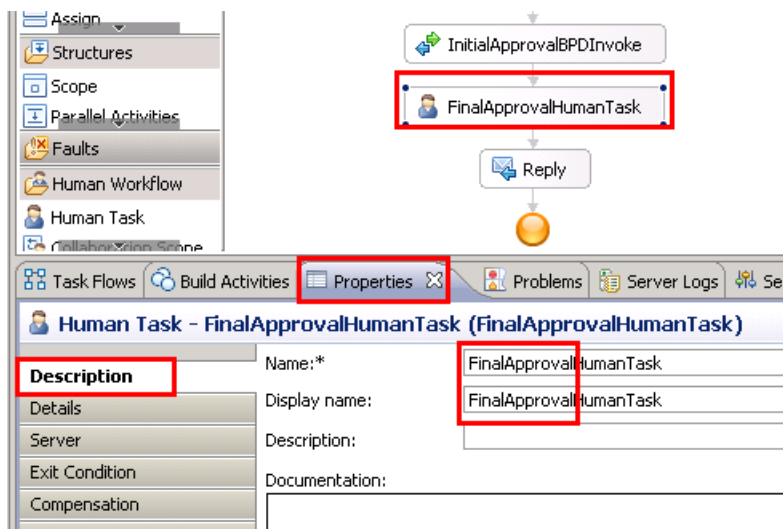
\_\_\_ d. The human task editor opens. Inspect what was generated for you. Leave this up since you will come back to this human task. Click the **RequestBPEL** tab.



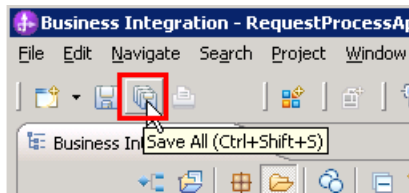
- e. Select the HumanTask → Properties → Details → Inputs → Read from Variable and click **none** and change to **reqBO**.  
 Also do this for the Outputs. You are doing this because you want to pass through the same business object throughout this example process.



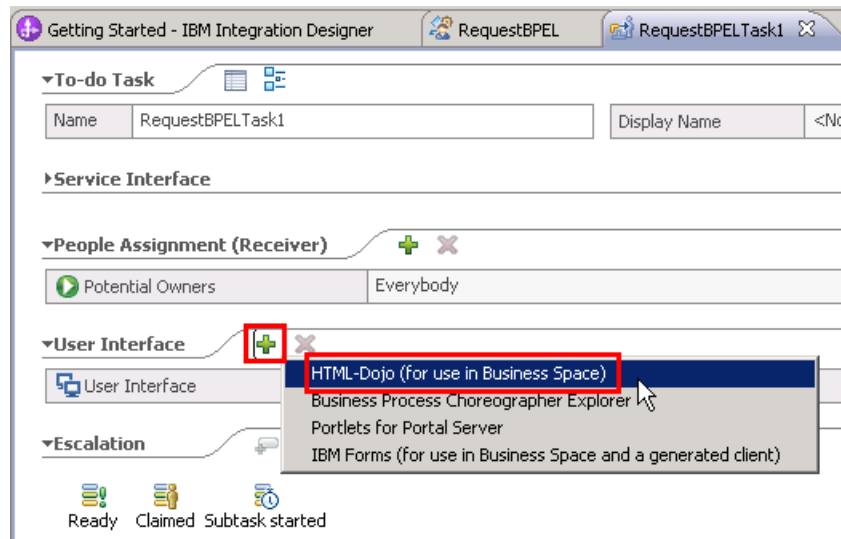
- f. Change the name for the inline human task. You are already in the properties for the human task, so click the Description sub-tab and change both the name and Display name from Human Task to **FinalApprovalHumanTask**.



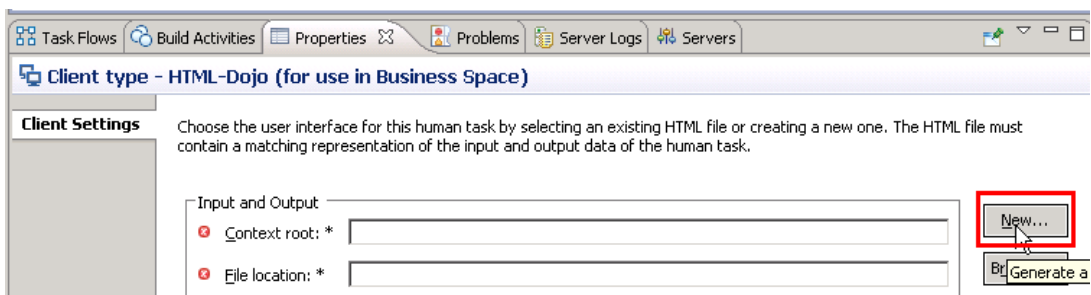
\_\_\_ g. **Save the BPEL**



- \_\_\_ 6. Generate human task form user interface for use in Business Space.
  - \_\_\_ a. Switch back to **RequestBPELTask1** editor.
  - \_\_\_ b. In the **User Interface** section, click **+** sign and select **HTML-Dojo (for use in Business Space)** from pop-up menu.

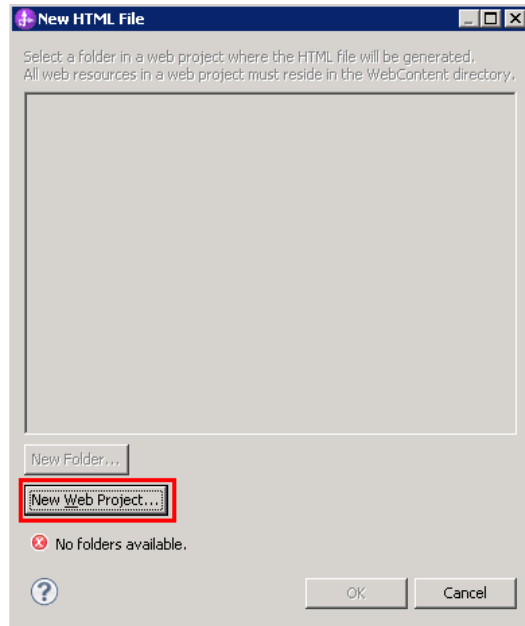


\_\_\_ c. For the **Client Settings** in the **Properties** view, click **New...** button on the right side of the **Context root** field to create a new HTML file.

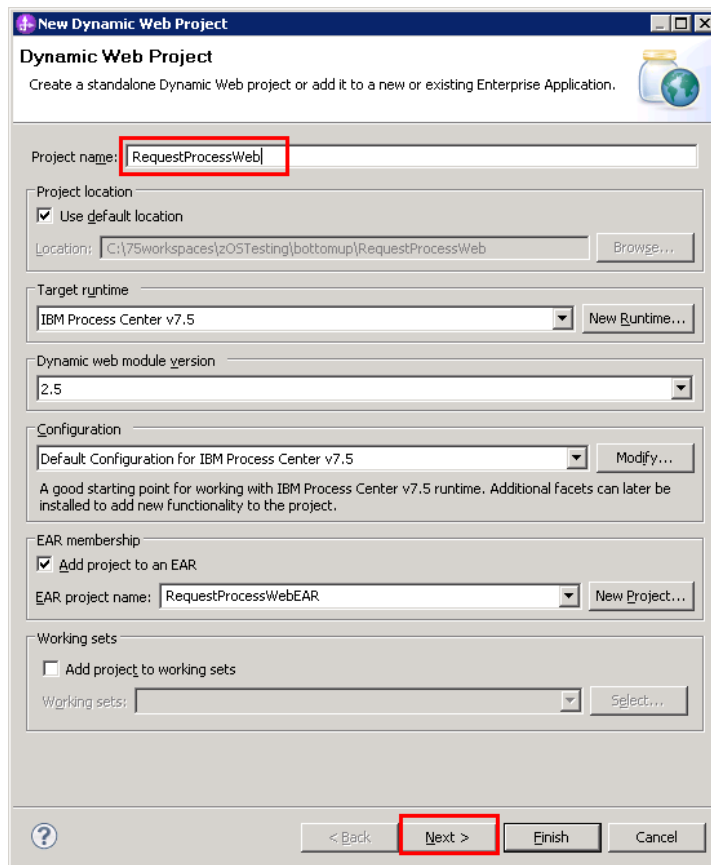


\_\_\_ d. On the popup **New HTML File** dialog, click **New Web Project...** button.

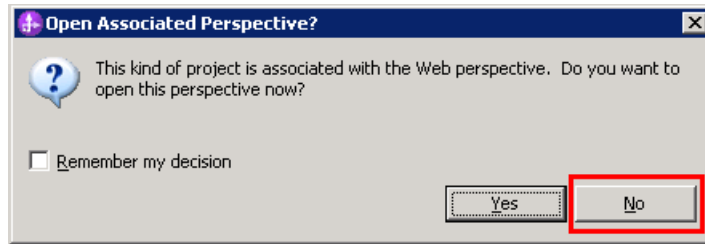




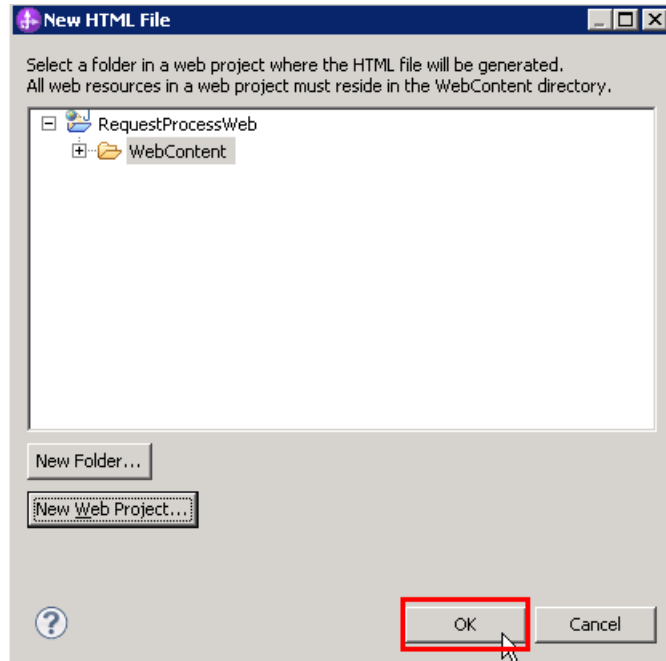
- \_\_\_ e. On **New Dynamic Web Project** wizard, enter **RequestProcessWeb** as Project name and keep default values in the rest of fields. Click **Next**.



- \_\_\_ f. Keep all the default settings by clicking **Next** until **Finish**. If a pop up window asks if switching to Web perspective, click **No**. (For this lab, the generated web HTML is enough.)

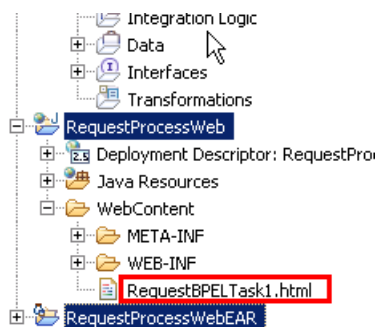


\_\_\_ g. Click **OK** to start generating the HTML file.



\_\_\_ h. Examine what has been generated for you.

The **RequestProcessWeb** project is created along with associated **RequestProcessWebEAR**. Under RequestProcessWebWebContent folder, the **RequestBPELTask1.html** file is generated.

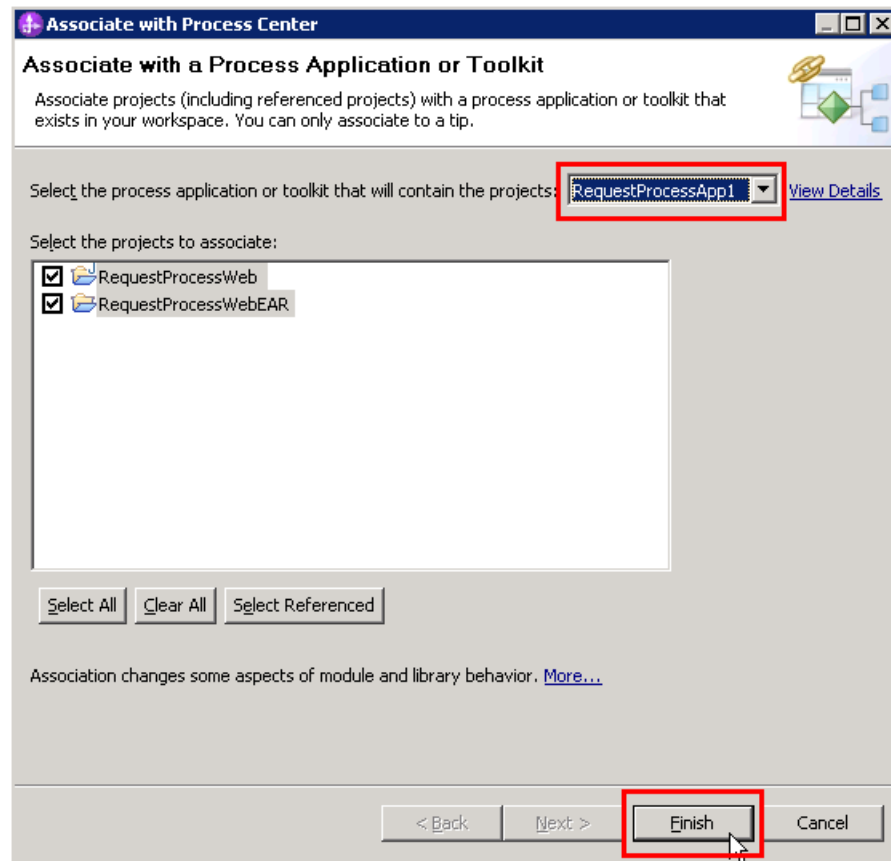


\_\_\_ i. Save the **RequestBPELTask1** editor.

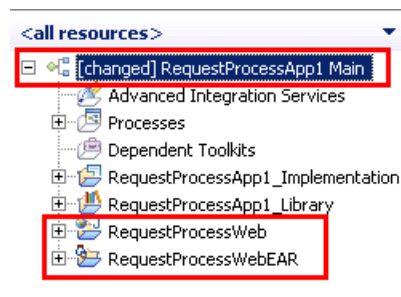
\_\_\_ j. Select both **RequestProcessWeb** and **RequestProcessWebEAR** projects, right click and choose **Associate with Process Center** from the pop-up menu.



- \_\_\_ k. On **Associate with Process Center** dialog, make sure the **RequestProcessApp1** is the process application to be associated with, click **Finish**.

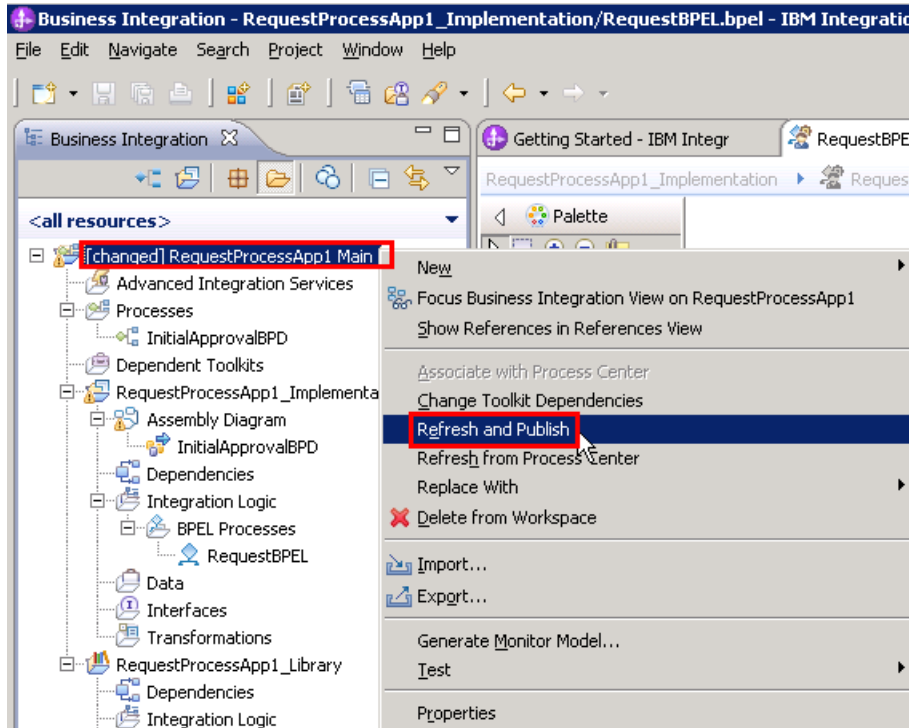


- \_\_\_ l. Once the association is completed, inspect the changes that have occurred. In the Business Integration view, notice that both **RequestProcessWeb** and **RequestProcessWebEAR** have been moved into **RequestProcessApp1** process application.

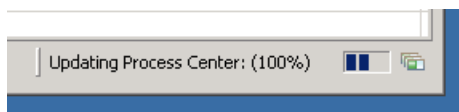


- \_\_\_ 7. Synchronize with the Process Center.
  - \_\_\_ a. You now have a BPEL process that calls a BPD and a human task. In order to run the BPEL application in a test, you must Refresh and Publish to the Process Center.

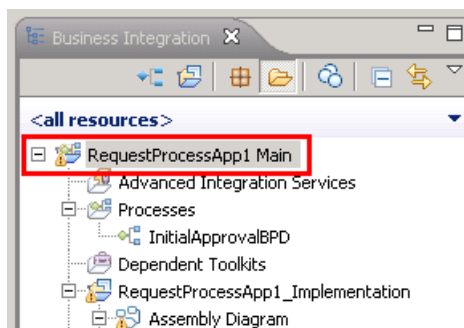
Right click the top-level process app **RequestProcessApp1** and select **Refresh and Publish**



You will notice processor activity (for example, in Task Manager on Windows) and Integration Designer will show at the bottom-right corner it is working on updating Process Center.



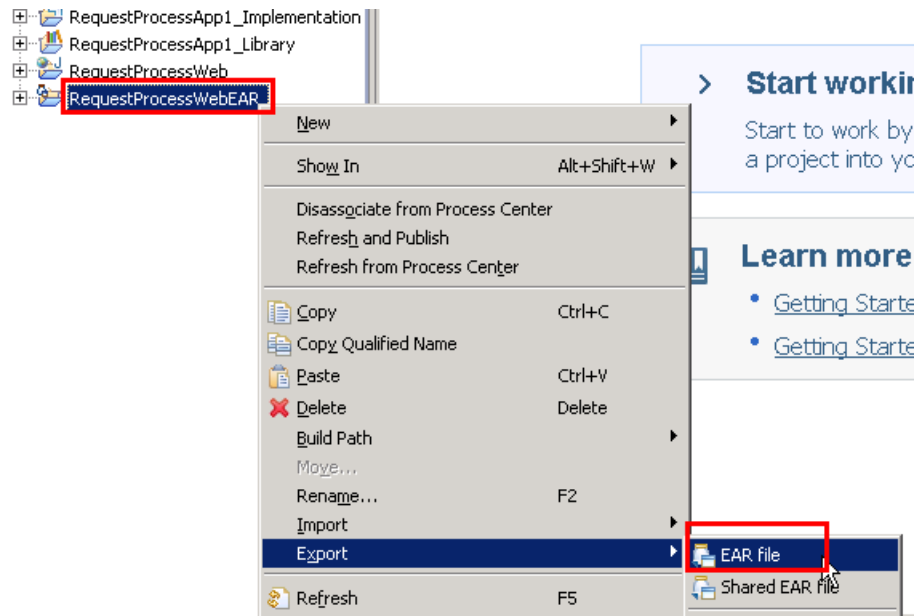
Once the content from the workspace has finished publishing to the Process Center, you will no longer see the “changed” prefix for the top-level process application



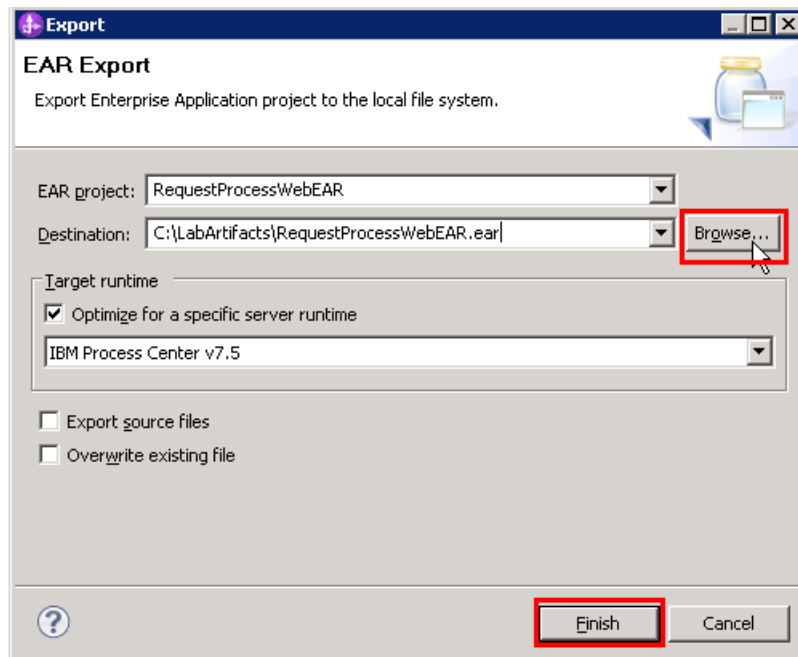
\_\_\_ 8. Deploy web EAR file into process center server.

In order to see the human task form in business space, you need to export the application containing your forms as ear and install it where you have business space deployed.

\_\_\_ a. Right click RequestProcessWebEAR and select Export -> EAR file.



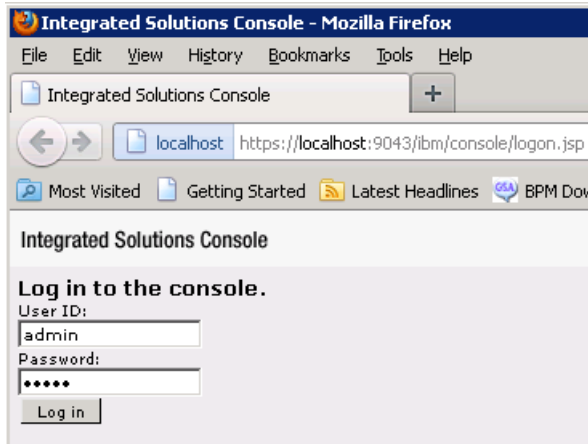
\_\_\_ b. In **Export** dialog, for **Destination** field, click **Browse...** button. Choose a local directory with RequestProcessWebEAR.ear as file name. Click **Finish**.



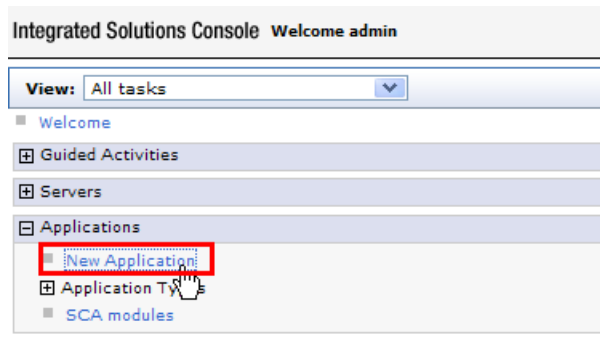
\_\_\_ c. Deploy web ear file onto process center server.

From Start menu, **Start → Programs → IBM WebSphere → Process Server 7.5 → Profiles → Process Center → Administrative Console.**

Login with admin/admin.



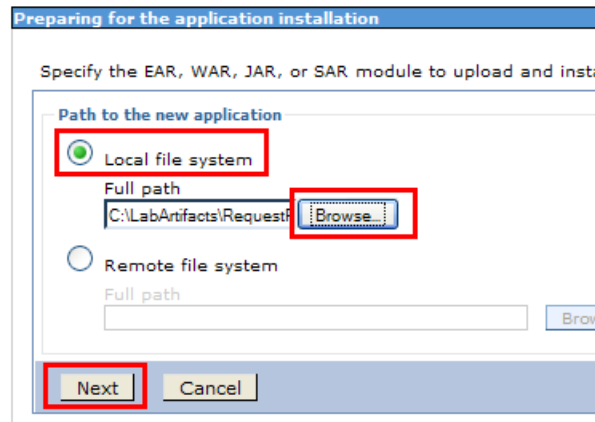
\_\_\_ d. On the left side navigation panel, expand **Applications** and click **New Application**.



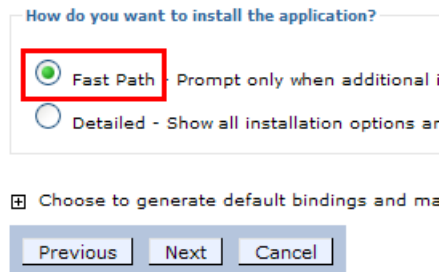
\_\_\_ e. Select New Enterprise Application on the right.



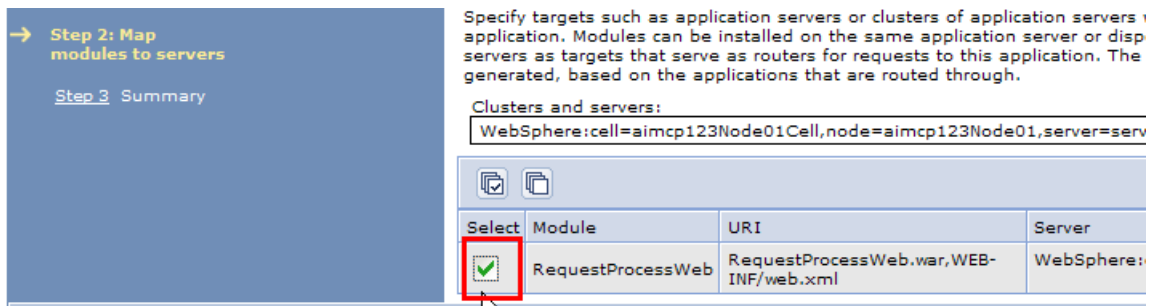
- \_\_\_ f. Choose **Local file system** and click **Browse...** button to choose the RequestProcessWebEAR.ear file you just exported. Click **Next**.



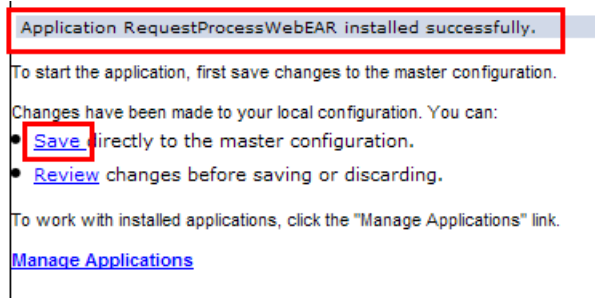
- \_\_\_ g. Keep **Fast Path** choice and click **Next**.



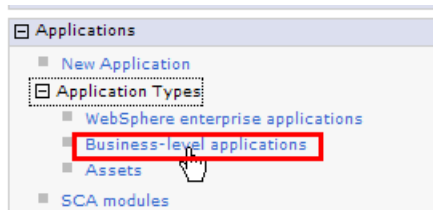
- \_\_\_ h. Keep all the default settings on the **Step 1: Select installation options** page, go to **Next**.
- \_\_\_ i. On **Step 2** page, select the check box in front of **RequestProcessWeb** module. Then click **Next**.



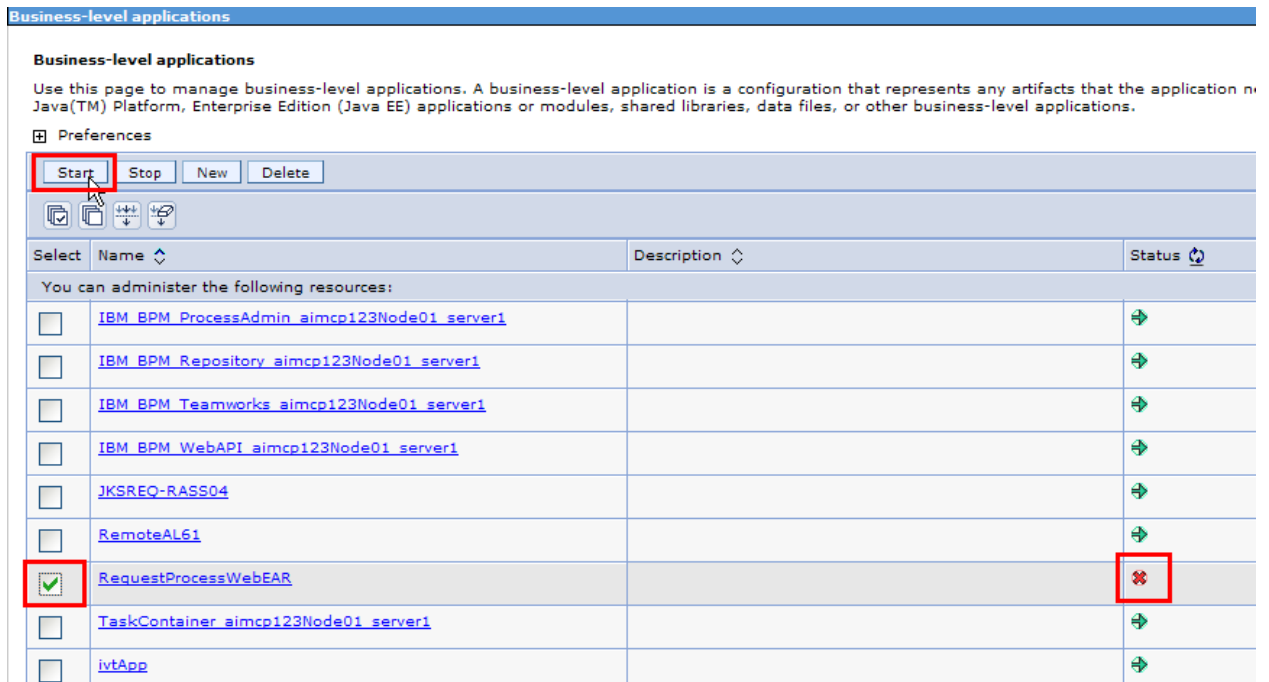
- \_\_\_ j. On Step 3 Summary page, examine the installation details, click **Finish**.
- \_\_\_ k. Once the application is successfully installed, save the changes.



\_\_\_ l. On the left navigation panel, expand **Applications -> Application Types**, click **Business-level applications**.



\_\_\_ m. Find **RequestProcessWebEAR** application in the list. Its status has a red "x" indicating it is not running. Select the check box in front of the application name, click **Start**.



Make sure the status icon become a green arrow, indicating the application is running.

\_\_\_ n. You can logout administrative console.



## Part 3: Run the human-centric process application

In this part of the lab exercise, you will run the human-centric scenario. A basic outline of this part is:

- Open the BPC Explorer to start the scenario
- Use the Process Portal to see and run the coach
- Use the BPC Explorer again to see and run the human task

\_\_\_ 9. Start the scenario

- \_\_\_ a. Open a browser and type the following URL, <http://localhost:9080/bpc>, and press enter. This accesses the BPC Explorer application that you use to drive this application. Type the following credentials and hit Login

**User Name: admin**

**Password: admin**

Business Process Choreographer Explorer

[Help](#)

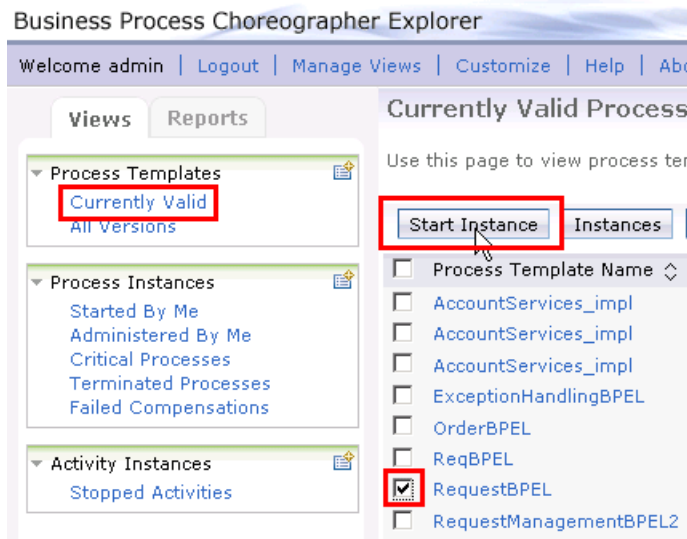
**Welcome to Business Process Choreographer Explorer.**

The page you requested is only available to registered users. Enter your username and password and click Login.

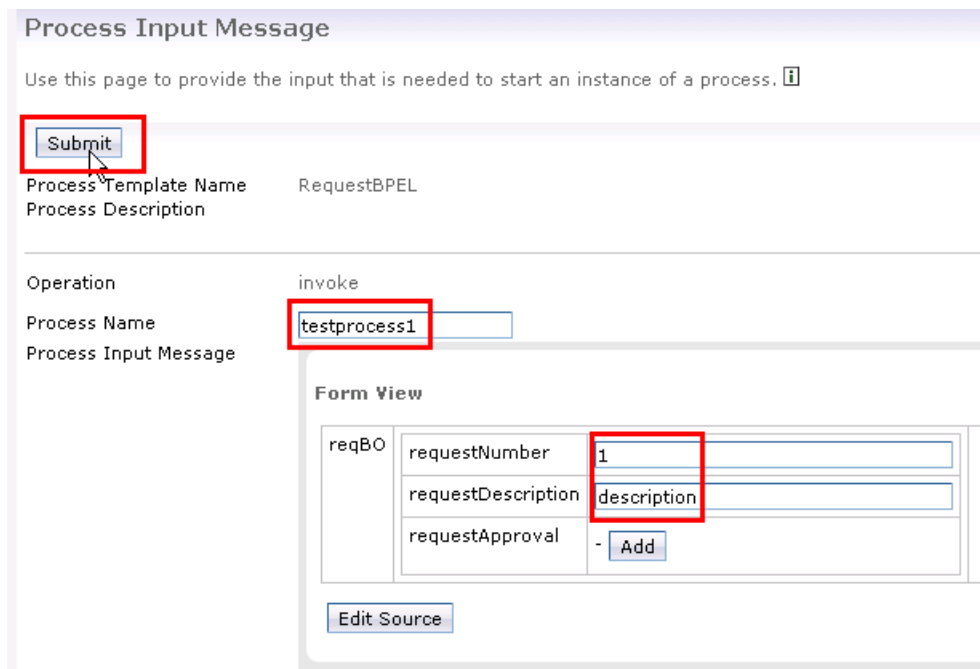
User Name:

Password:

\_\_\_ b. Once in, click Currently Valid, click the check box for RequestBPEL, and click start instance.



\_\_\_ c. Add a process, providing a name and values for the reqBO elements requestNumber and requestDescription. For example:  
Process Name – testprocess1  
requestNumber – 1  
requestDescription - description  
Click **Submit** to start the process instance.

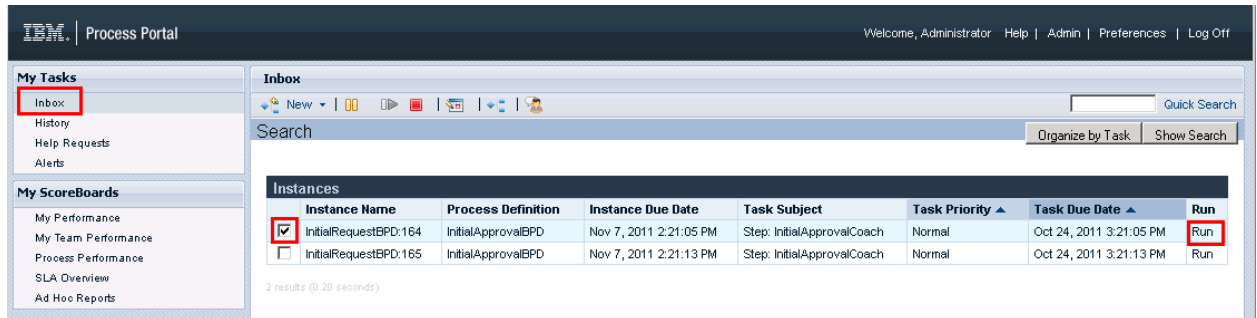


Keep BPC Explorer open. You will use it again in a minute.

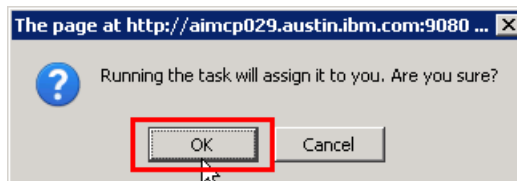
\_\_\_ 10. Open Process Portal to see and work on initial approval coach

\_\_\_ a. Open URL to <http://localhost:9080/portal>

\_\_\_ b. Notice the coach is waiting for the initial approval in your Inbox. Select the check box for the coach and click the **Run** button (green triangle).

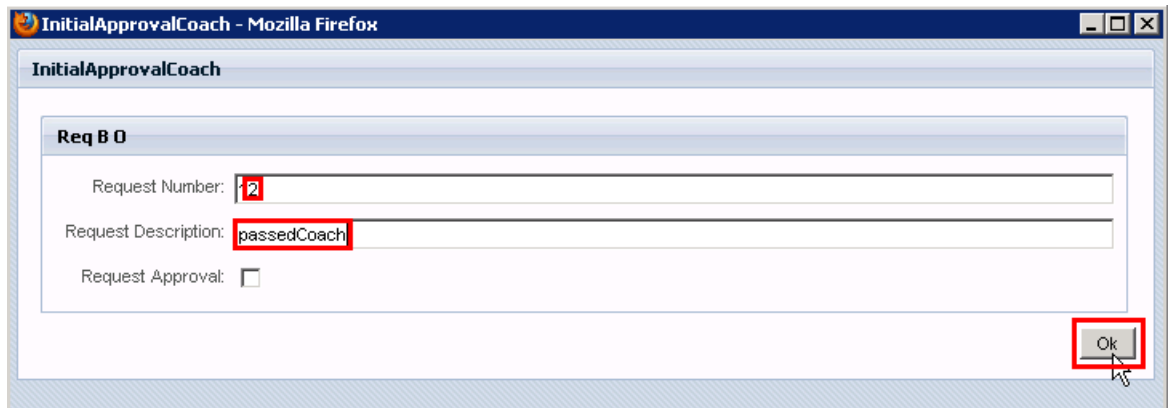


\_\_\_ c. Click **OK** at the prompt to assign it to you.



\_\_\_ d. Another browser window will open with the Coach form.

Change the request number (change it to 12)  
 Change the description to **passedCoach**  
 Click **OK**



\_\_\_ e. The Coach will now disappear from your Inbox. Therefore, the business process has left the BPD and should now be waiting on for the BPC human task to be completed.

11. Return to the BPC Explorer to see and work on the final approval human task

- a. To see the task, click **My To-dos**, select the check box for FinalApprovalHumanTask, and click the Work on button.

Business Process Choreographer Explorer

Welcome admin | Logout | Manage Views | Customize | Help | About

Views Reports

Process Templates  
Currently Valid  
All Versions

Process Instances  
Started By Me  
Administered By Me  
Critical Processes  
Terminated Processes  
Failed Compensations

Activity Instances  
Stopped Activities

Task Templates  
My Task Templates

Task Instances  
**My To-dos**  
All Tasks  
Initiated By Me  
Administered By Me  
My Escalations

### My To-dos

Use this page to work on tasks that are assigned to you. [i](#)

**Work on** Release Transfer Start Change Business Category Refresh

<input type="checkbox"/>	Priority	Task Name	State	Kind	Owner	Originator	Escalated	Suspended
<input checked="" type="checkbox"/>	5	FinalApprovalHumanTask	Ready	To-do Task	admin	admin	no	no
<input type="checkbox"/>	5	InlineHumanTask	Ready	To-do Task	admin	admin	no	no
<input type="checkbox"/>	5	HumanTask	Ready	To-do Task	admin	admin	no	no
<input type="checkbox"/>	5	HumanTask	Ready	To-do Task	admin	admin	no	no

Items found: 4 Items selected: 1 Page 1 of 1 Items per page: 20

\_\_\_ b. Once the task is open, see the updated content that came from the BPD.

- Change the requestNumber (that is, **123**)
- Change the requestDescription to **passedhumantask**
- Click the **Add** to verify the approval
- Click **Complete**

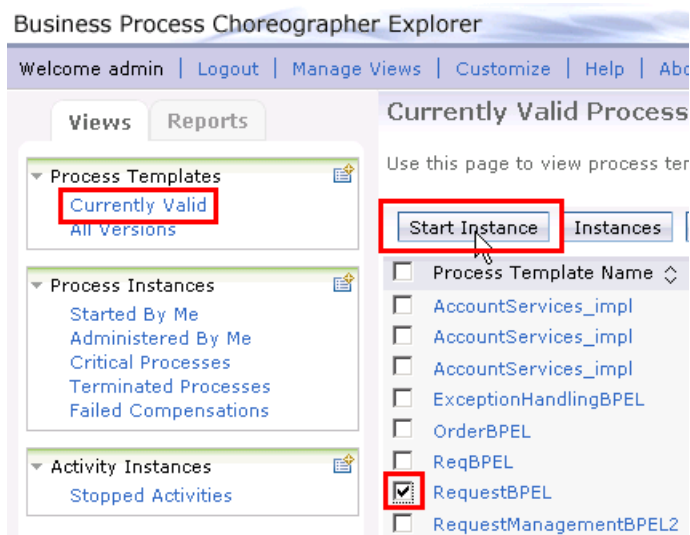
The screenshot shows the Business Process Choreographer Explorer interface. On the left is a navigation pane with categories: Process Templates, Process Instances, Activity Instances, Task Templates, and Task Instances. The main area is titled 'Task Message' and contains instructions: 'Use this page to provide the data required to complete the task.' Below this are buttons for 'Complete', 'Save', 'Release', and 'Cancel'. The 'Complete' button is highlighted with a red box. The task name is 'FinalApprovalHumanTask'. There are two 'Form View' sections. The top one shows a table with fields: requestNumber (2), requestDescription (passedCoash), and requestApproval (checkbox). The bottom one shows a table with fields: requestNumber (123), requestDescription (passedHumanTask), and requestApproval (checkbox). The 'Add' button is highlighted with a red box. There are also 'View Source' and 'Edit Source' buttons.

## Part 4: Demonstrate federated task management by running the process application

In this part of the lab exercise, you will use the human-centric BPEL process to demonstrate both coaches and human tasks in the same list. A basic outline of this part is:

- Open the BPC Explorer to start a couple instances of the process
- Use the process portal to see and run the poach
- Use Business Space to see a federated view to work on both coaches and human tasks

1. Create a few process instances in the BPC Explorer application (to view in Business Space later)
  - a. If not still open, open a browser and type the following URL, <http://localhost:9080/bpc> to start the BPC Explorer client.
  - b. Once in, click **Currently Valid**, click the check box for **RequestBPEL**, and then click **Start instance**.



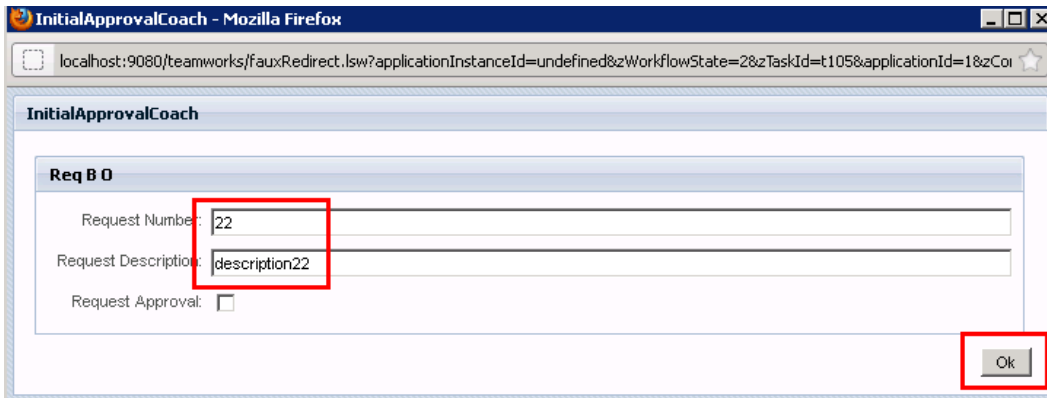
- \_\_\_ c. Add a process name like **testprocess2**, and then fill out elements with requestNumber like **2** and requestDescription with any string text like **description2**. Click **Submit**

- \_\_\_ d. Repeat these steps with the numbers incremented one more time for a total of two processes to use. Add a process name like **testprocess3**, and then fill out elements with a requestNumber like **3** and requestDescription with any string text like **description3**. Click **Submit**

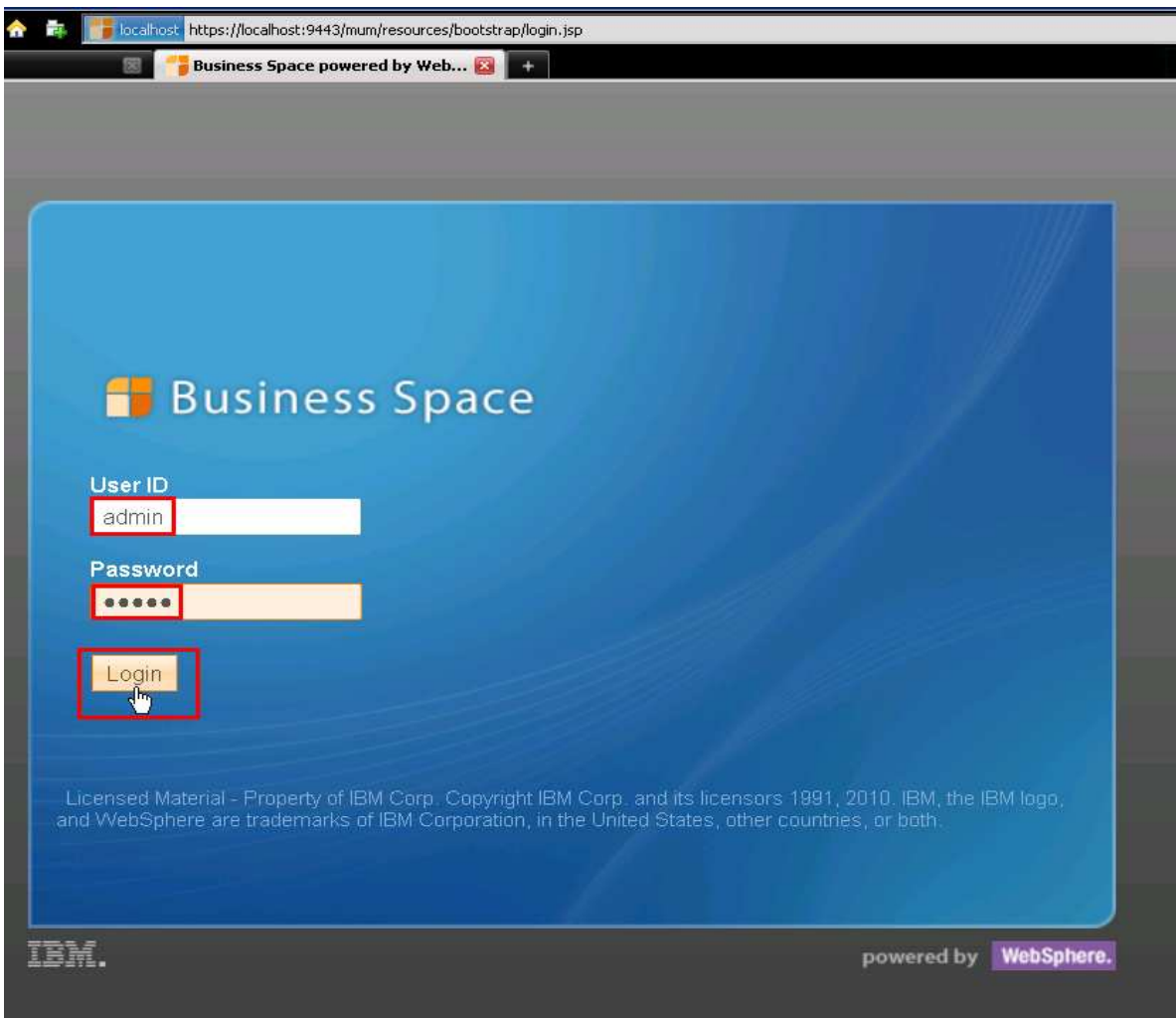
- \_\_\_ 2. View the two process instances in Process Portal and continue one of them. You will continue one of them so you can see processes mid-flight in Business Space.
  - \_\_\_ a. Open URL to <http://localhost:9080/portal>
  - \_\_\_ b. Click **My Inbox**.
  - \_\_\_ c. Select the **check box** on the first coach in the list and click the green **Run** icon.

Instance Name	Process Definition	Instance Due Date	Task Subject	Task Priority	Task Due Date	Run
<input checked="" type="checkbox"/> InitialApprovalBPD:105	InitialApprovalBPD	Nov 27, 2011 2:40:59 PM	Step: InitialApprovalCoach	Normal	Nov 13, 2011 3:40:59 PM	
<input type="checkbox"/> InitialApprovalBPD:106	InitialApprovalBPD	Nov 27, 2011 2:43:33 PM	Step: InitialApprovalCoach	Normal	Nov 13, 2011 3:43:33 PM	

- \_\_\_ d. Change the information in the form and click **OK**.



- \_\_\_ 3. Login to Business Space and create a new space from the “Interacting with Processes and Tasks” template.
  - \_\_\_ a. Enter the URL in the browser.
  - \_\_\_ b. Login with **admin / admin**

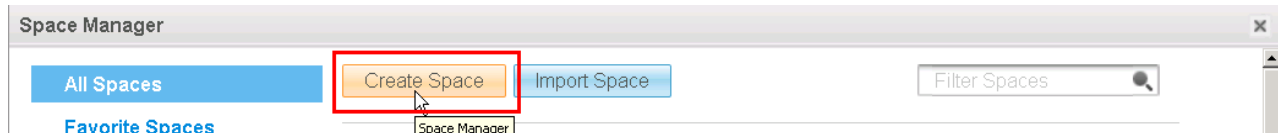




\_\_\_ c. Click the green **Start** button to open the Space Manager and create a new space.



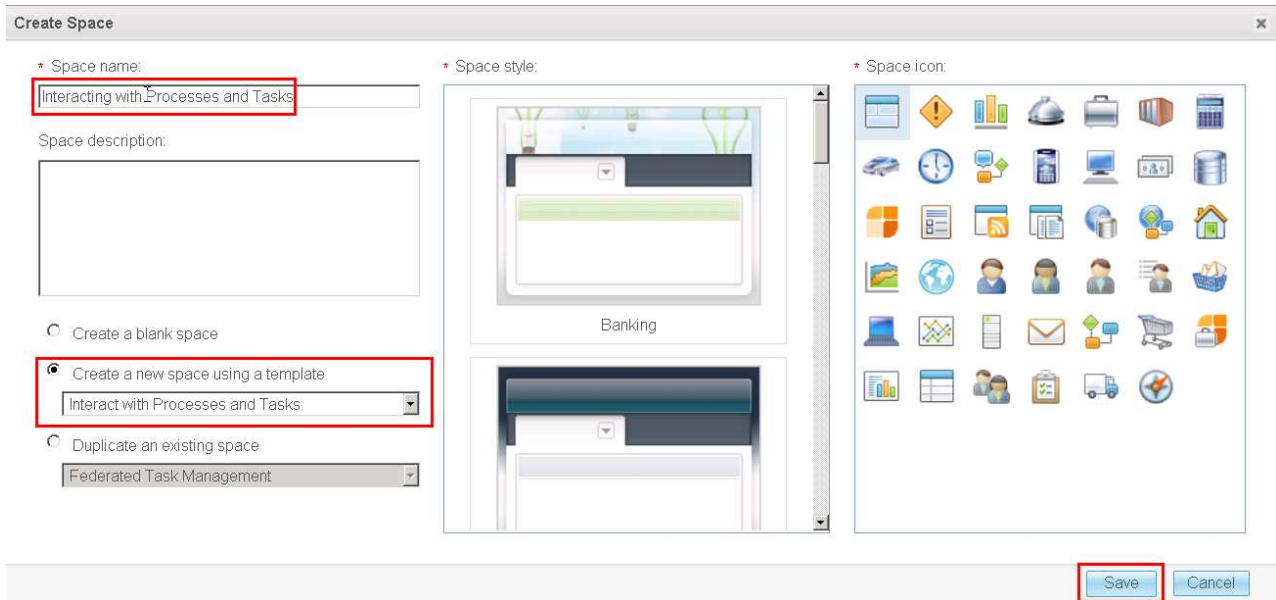
\_\_\_ d. In Space Manager, click **Create Space** to create a new business space.



\_\_\_ e. In the new space name, enter **Interacting with Processes and Tasks**

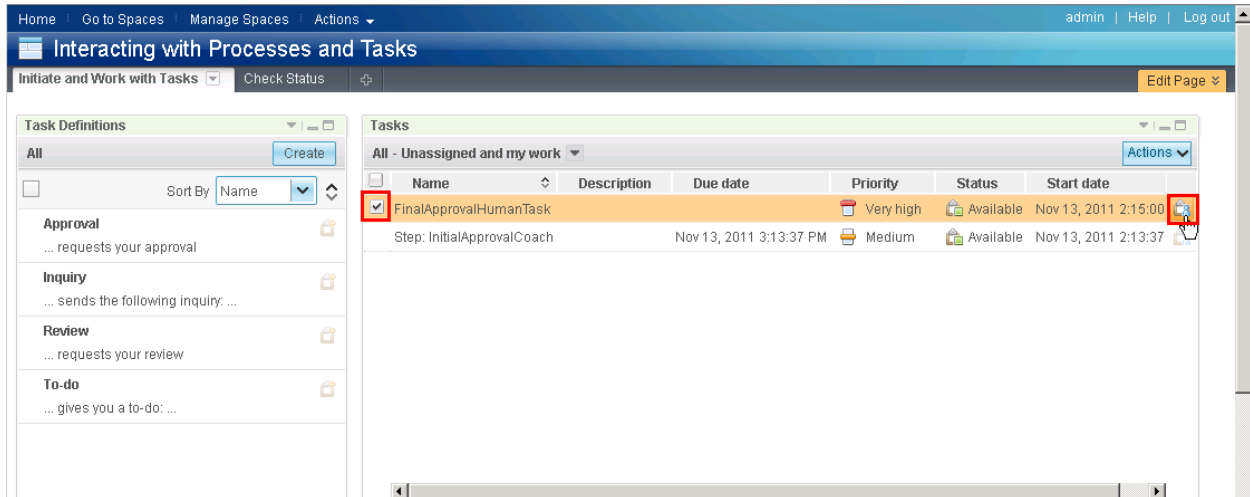
\_\_\_ f. Click the radio button next to Create a new space using a template and click the drop down arrow to select the **Interacting with Processes and Tasks** template.

\_\_\_ g. Click **Save**.



4. Interact with both BPD processes and BPEL processes, and the coaches and human tasks
- a. Once the template opens up to the **Initiate and Work with Tasks** page, begin to work on coaches and WebSphere Process Server human tasks in same task list.

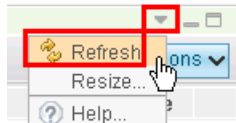
In the Task widget, select the **FinalApprovalHumanTask** entry and click **Accept and Edit Task** towards the far right. This is the continuation of the process that you ran in Process Portal in the previous steps.



NOTE: The value here is that if you have both coaches and tasks in one UI, you do not need to open either Process Portal, BPC Explorer, or any other client that connects to heterogeneous systems. You can start, work on, and complete tasks from Business Space.

- b. In the Task Information widget, click **Submit** for the task to complete the process.

- \_\_\_ c. Refresh the Tasks widget by clicking the down arrow at the top right bar and selecting **Refresh**



Notice the FinalApprovalHumanTask disappeared from the list because you just completed that task. Now to work on a Coach.

- \_\_\_ d. The Task widget, select the **InitialApprovalCoach** entry and click the **Accept and Edit Task button** towards the far right. This is the process that you left alone in Process Portal in the previous steps.

Name	Description	Due date	Priority	Status	Start date
Step: InitialApprovalCoach		Nov 13, 2011 3:13:37 PM	Medium	Available	Nov 13, 2011 2:13:37 PM

- \_\_\_ e. Change some content in the form within the Task Information widget and click OK.

Task Information

Step: InitialApprovalCoach

Form | Details

**InitialApprovalCoach**

**Req B O**

Request Number: 33

Request Description: description33

Request Approval:

Ok

\_\_ f. Refresh the Tasks widget again. The **FinalApprovalHumanTask** entry appears in the list. You can accept and finish it by repeating the same steps as before.

Tasks

All - Unassigned and my work

<input checked="" type="checkbox"/>	Name	Description	Due date	Priority	Status	Start date
<input checked="" type="checkbox"/>	FinalApprovalHumanTask			Very high	Available	Nov 13, 2011 2

## What you did in this lab exercise

In this exercise you...

- As the integration developer using the Integration Designer
  - Created a human centric BPEL process
  - Integrated a BPD into a BPEL process and work with SCA artifacts associated with the BPD
  - Refreshed and Published to the Process Center
  - Used the BPC Explorer to drive or start the scenario
- As the process developer using the Process Designer
  - Created a process application
  - Create a process application and simple business process that uses a coach
  - Correctly passed data through the process
  - Tested the process application using the process inspector
  - Used the Process Portal to work with the coach
- As the end user
  - Worked on both coaches and WebSphere Process Server human tasks in one task widget within Business Space