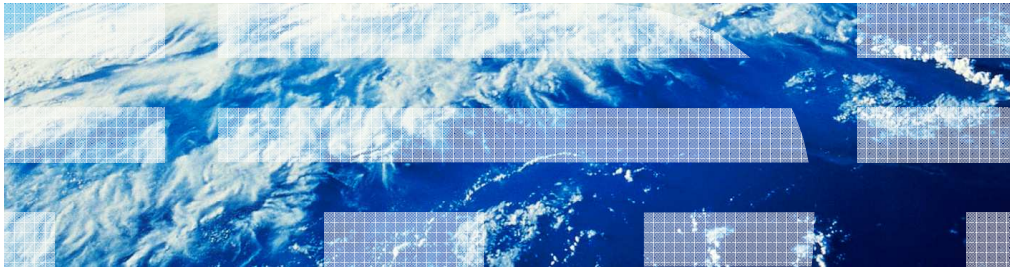


---

# IBM Business Monitor

## Monitor model versions



This presentation should give you an understanding of the use of version handling with monitor models for IBM Business Monitor.

## Goals

- Introduce monitor model version handling in IBM Business Monitor

This presentation will give you an understanding of the version handling of monitor models in IBM Business Monitor including which changes you can make and how you manage the deployment of the new versions.

## Agenda

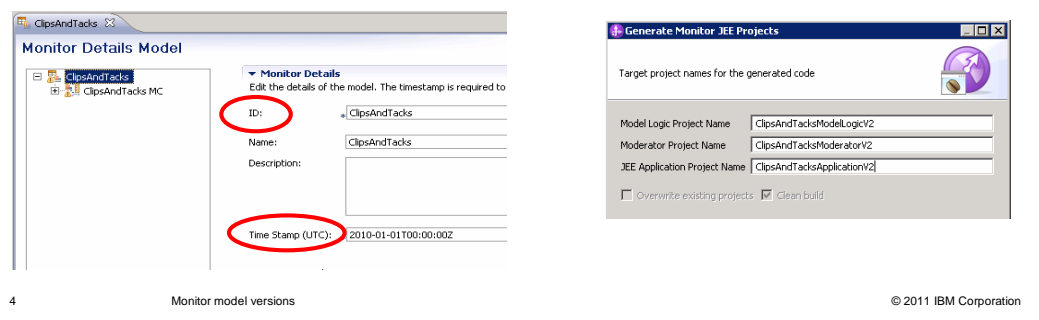
- Version handling defined
- Making changes to models
- Deploying a copy of a model
- Version recovery
- Version control with WebSphere Business Modeler

This is the agenda for this presentation. You will review the characteristics of a monitor model version and how to manage new versions in the monitor environment. You will see which model changes are allowable and for allowed changes you will see the best way to implement them. If you use a copy of a monitor model to begin construction of a new monitor model, then there are important points to consider when doing this activity. For problem models you will learn how to introduce a new version and move the instances. Finally you will see how to manage changes to the business measures model in WebSphere Business Modeler.



## Version handling (1 of 2)

- Version handling is the ability to concurrently run multiple versions of the same monitor model
- Version handling is used to
  - Fix current monitor model problems or add model enhancements
  - Preserve the already collected data
- All versions for a single monitor model should have the same model ID
- All versions for a single monitor model should have different time stamps
- New version deployment is allowed only if its time stamp is the most recent
- Project names during Java generation have to be unique per version



By using model version handling you can deploy multiple versions of the same monitor model with each successive model containing fixes or enhancements to the previous versions. By running multiple models simultaneously you can preserve the monitor data that is collected for each version, and reporting can be done for a specific version or for all versions.

To create a new version of a deployed monitor model, use the monitor model editor to update the model timestamp with a more recent timestamp but do not change the model ID. When you deploy the new model it must have a more recent timestamp compared to the previously deployed versions of the model.

When you generate the monitor Java projects you should make all the project names unique for each model version. Adding a version identifier to the project names is a good practice so all the applications can be readily identified by version number.



## Version handling (2 of 2)

- After a new version of a monitor model is deployed:
  - Only the latest version is able to create new monitoring context instances
  - Older versions will continue running until all running instances are completed
  - CEI distribution mode of older version will automatically change from “Active” to “Active (no new monitoring context instances)”
  - A set of version-specific database tables and views are created to support the deployed version
  - A set of cross-version views is created to support cross-version dashboard queries
- A new version of a monitor model can contain any model changes except:
  - Changing the data type of an existing metric
  - Changing the monitoring context hierarchy
- Version handling is not possible for servers running in development mode

5

Monitor model versions

© 2011 IBM Corporation

In case there are multiple versions installed on the server, only one version can have the distribution mode set to active. Installing a new monitor model with status active automatically sets the distribution mode of the previous version to ‘active (no new monitoring context instances)’. The timestamp of the new version has to be more recent than the previous one. Though events are being processed independently by monitor model versions, a set of cross-version views is created to enable dashboards to display data aggregated from all versions.

When you are making changes to a monitor model using the model editor, ensure that you do not change the data type of an existing metric. Also ensure that you do not move existing monitoring contexts around in the hierarchy. Either of these changes will prevent you from using version handling. If these changes are necessary then consider creating a new monitor model.

Note that version handling is not enabled for development servers.

## Model versions

- No 'valid from' date used in the monitor model version management
  - Version with greatest timestamp is the active version (even if it is a future timestamp)
  - The 'valid from' on the BPEL process is used in the model correlation criteria
- CEI distribution mode
  - Active: latest version
  - Active (no new monitor context instances): older versions are set to this automatically
  - Inactive: after model install, but before deployments steps are complete
  - Inactive (event queue recoverable)

There is no 'valid from' dates with monitor version handling. The version with the greatest timestamp is active even if the timestamp is in the future. But for BPEL process monitoring, you can effectively achieve the same result. The process has a 'valid from' date and respects the usage of it. The inbound events in the monitor model use this date in the correlation criteria. So the result is that the monitor model won't process events before the date criteria have been met.

There are four CEI distribution modes. Active mode is automatically set for the latest version. Mode 'Active (no new monitor context instances)' is automatically set for older versions of a model. A model in inactive mode has been installed, but the deployment steps have not been completed. Mode 'Inactive (event queue recoverable)' is used for recovery purposes when a problem version of a model has been deployed.

## Independence from process application version

- For BPEL, a model version is specific to a process version
  - Generated model has “and processTemplateValidFrom=X” in filter expressions
  - This means that if a new version of a process is installed, you must install a new version of the model to monitor it
  
- For process applications, the model does not filter on the process version
  - No need to install a new model version when the process is versioned
  - Generated models now have defensive map expressions
    - They check if a field is present before assigning to a metric
    - If new process version no longer has a field that the model wants to track, then this field is null
    - If new process version has some new fields, they won't be tracked
  - You only version an model to track something new

For your BPEL applications, a monitor model version is closely tied to a process version because the 'valid from' date is used in the inbound filter expressions. So you need to install a new model version whenever you create a new process version.

For your process applications, a monitor model version is not tied to the process application version. This allows you to make changes to the process and not create a new model version. Any model version can handle situations where the source of a metric is no longer present because of a change in the process. So you only need to version a monitor model if you are interested in tracking something that is new in the process.

## Event definitions that create monitoring contexts

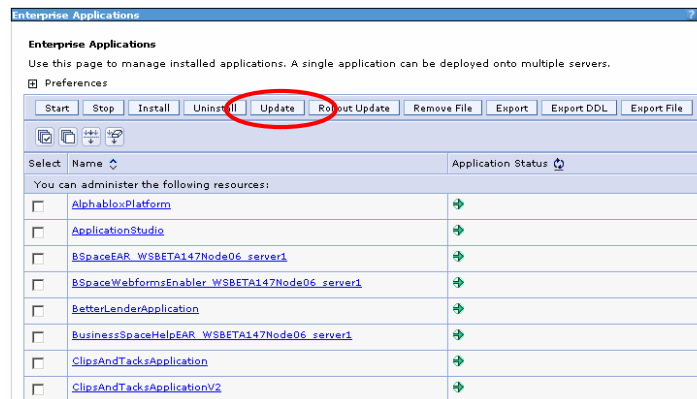
- Each monitoring context should have a single unique common base event definition that creates monitoring contexts
- All other event definitions for that monitoring context should not create monitoring contexts and are viewed as "updating" the monitor context
- The single unique "create" event definition should not be used subsequently in the monitoring context to update metrics

To ensure that your model works when deploying multiple versions of the model, you should define a unique event with 'create monitoring context' semantics. This event should not be used elsewhere in the model to update metrics. This will prevent the newest version from creating monitoring context instances for existing instances that are being managed by the older versions.



## Version handling is not a model update

- Model application update replaces the application code associated with the model with a later version
- Use this to apply a fix to correct a code-generation problem



The update application button in the administrative console should not be used for version handling. The update button is typically used to apply a fix to the application when there has been a code generation issue.

## Summary of model changes

Model change	Valid scenario	Recommendation
Add new KPI (based on existing metric or other KPI)	Yes	Use KPI manager widget
Modify existing modeled KPI	Yes	Version handling must be used
Add new alert (based on KPI)	Yes	Use alert manager widget
Add new alert (based on metric)	Yes	Version handling must be used
Add or change a metric or event	Yes	Version handling must be used
Add or change a dimension or aggregated measure	Yes	Version handling must be used
Add or change a diagram	Yes	Version handling must be used
Change metric data properties (type, default,..)	No	
Modify monitoring context hierarchy	No	

10

Monitor model versions

© 2011 IBM Corporation

This table lists the types of changes that you can make to a monitor model. In some cases, it is easier to use the dashboard widgets rather than version handling to make the model change. For example, to add a new KPI you can use the KPI manager widget. Also, to add a new alert that is based on a KPI, you can use the alert manager widget. For the other valid changes, you should use the monitor model version handling process.

## Versioning – Wizard for new monitor model version (1 of 2)

A screenshot of a software dialog box titled 'New Monitor Model Version'. The dialog has a title bar with a plus icon and standard window controls. The main content area is titled 'Create a New Version of a Monitor Model' and contains the instruction 'Specify a business monitoring project and time stamp for the new monitor model version.' Below this are four input fields: 'Business monitoring project:' with the value 'CATOrderMgmt\_Monitor', a checked checkbox for 'New business monitoring project:' with the value 'CATOrderMgmt\_Monitor\_1', 'Monitor model name:' with the value 'Order\_Handling\_Mon', and 'New time stamp:' with the value '2010-09-01T05:38:18Z'. An 'Edit...' button is next to the time stamp field. A paragraph of explanatory text follows, and at the bottom, there is a note about creating multiple versions and a 'More...' link.

**New Monitor Model Version**

**Create a New Version of a Monitor Model**

Specify a business monitoring project and time stamp for the new monitor model version.

Business monitoring project: CATOrderMgmt\_Monitor

New business monitoring project: CATOrderMgmt\_Monitor\_1

Monitor model name: Order\_Handling\_Mon

New time stamp: 2010-09-01T05:38:18Z

If the "New business monitoring project" check box is selected, the new monitor model version will be created in the project that is specified in the "New business monitoring project" field. If you clear the "New business monitoring project" check box, the new monitor model version will instead be created in the project that is specified in the "Business monitoring project" field.

You can create multiple versions of an existing monitor model and deploy one or more of them at the same time. Each version of a monitor model has the same name but is distinguished from other versions by a unique time stamp. [More...](#)

You can make a copy of the monitor model project and update the timestamps yourself. You can also use the wizard to create a new monitor model version. When using the wizard you specify the new name for the project and you can also specify a new timestamp for the monitor model.

## Versioning – Wizard for new monitor model version (2 of 2)

**Specify the New Versions of the Applications**

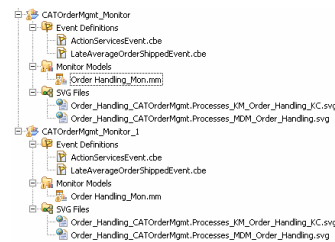
For each existing application, select the new version of the application that you want the new version of the monitor model to monitor.

Existing Application	New Version of the Application
CATOrderMgmt	CATOrderMgmt_1

**Synchronize monitor model with application**

The monitor model is based on an application that has changed. In the Resulting Action column, select the action to perform for each change. Only changes that affect monitored elements are shown.

Application Change	Affected Monitor Elements
Elements added	
Elements removed	
CATOrderMgmt_1	
CATOrderMgmt_1Module	
Order Handling	
Order Handling	
Order Handling Ship Order to Customer to Update Order Database:CONFALSE	Order Handling Ship Order to Customer
Order Handling Ship Order to Customer to Update Order Database:CONTRUE	Order Handling Ship Order to Customer
Update Order Database	Update Order Database
Elements changed	
CATOrderMgmt_1	
Removed schema reference (location: %CATOrderMgmt_1%processes\orderhandling\orderhandling\interface.wsdl)	Order Handling
Added schema reference (namespace: http://www.ibm.com/mits/prod/live/share/business-process/events/7.0/)	Order Handling
Added schema reference (namespace: http://www.ibm.com/mits/prod/live/share/business-process/events/7.0/)	Order Handling
Removed schema reference (location: %CATOrderMgmt_1%processes\orderhandling\checkorderhandlingpolicyfor...)	Order Handling
CATOrderMgmt_1Module	
Order Handling	
Order Handling	
Order Handling Identity: Specification 2	Order Handling:COMPENSATED, Order H
Value changed from "Wed 2009-12-09 19:20:29.000" to "Wed 2010-09-01 09:45:48.000"	Order Handling:COMPENSATED, Order H



If you are not monitoring a process then the wizard completes. If you are monitoring a process, then after specifying the project name and timestamp, the wizard prompts you for the target version of the monitored process application. There can be several versions of the process, so you need to identify the one that you will monitor with the new version of the monitor model. The process version has changed from the original, so now a synchronization dialog is shown. This allows you to view the monitor model changes that will occur based on the new process version. There is an action column where you can remove application associations or delete monitored elements. When you complete the wizard, the new project contains the new version of the monitor model.

## Deploy a copied model

- To avoid name collisions you will need to rename monitor model ID

▼ **Monitor Details**  
 Edit the details of the model. The timestamp is required to i

ID:

- For convenience you should rename monitor details name and monitoring context ID
  - Otherwise when configuring the instances widget it is difficult to distinguish between the two different models:

▼ **Monitor Details**  
 Edit the details of the model. The timestamp is re

ID:

Name:

▼ **Monitoring Context Details**  
 Edit the details of the monitoring context, i

ID:

**Instances Edit**

Show/Hide Filter Sort Format Wiring

Select the monitoring contexts to personalize:

- Better Lender BAM Showcase(Across all versions)
- ClipsAndTacks(Across all versions)  
 ClipsAndTacks MC
- ClipsAndTacks(Across all versions)  
 ClipsAndTacks MC

When you want to create a new monitor model, sometimes it makes sense to make a copy of an existing model and make changes to it. In order to deploy the copied model as a new model and not as a version of the original model, you should create a unique model ID in the model editor on the model details tab. This is the minimum required change, but you might also change the monitor details name and the root monitoring context ID. The instances widget must be configured to display monitor contexts and, as you can see in this screen capture, the model names and monitoring context identifiers are the same for the original model and the copied model. So it is difficult to determine which model and monitoring context to choose.

## Error recovery – Remove a problem version

- Change CEI Distribution state to 'Inactive (event queue recoverable)'
- Repackage prior version or create new version with timestamp greater than problem version
- Deploy new version
- If there are active monitoring context instances for the problem version, the new version cannot go to active status
  - Run script to move instances from problem version to the new version
  - See information center topic 'Transferring model context instances'
- New version goes to 'Active' status
- Events for problem version are processed by the new version (assuming same filters, correlation keys)
- Problem version can be uninstalled after it goes to 'Inactive' status

If you find that you have deployed a new version of a model and it is a problem version that needs to be removed then this slide shows you the procedure. You change the CEI distribution mode to 'Inactive (event queue recoverable)' for the problem version, then repackage a new version to deploy. You deploy the new version, and you must also move any active monitoring context instances from the problem version to the new version. There is a supplied script which you can use to move the instances. Assuming the new model has the same filters and correlation keys, then the new version will process the events queued up for the problem version. After the events are processed, then the problem version can be uninstalled.

## Version control with WebSphere Business Modeler

- After making changes to the business measure model, export it selecting target WebSphere Integration Developer
  - In the export wizard, add the version number to the target process project names and the target monitor project names

Target Project Names			
Modeler Project Name	Business Logic Module Name	Implementation Module Name	Library Name
CATOrderMgmt	CATOrderMgmt_V2	CATOrderMgmt_impl_V2	CATOrderMgmt_lib_V2

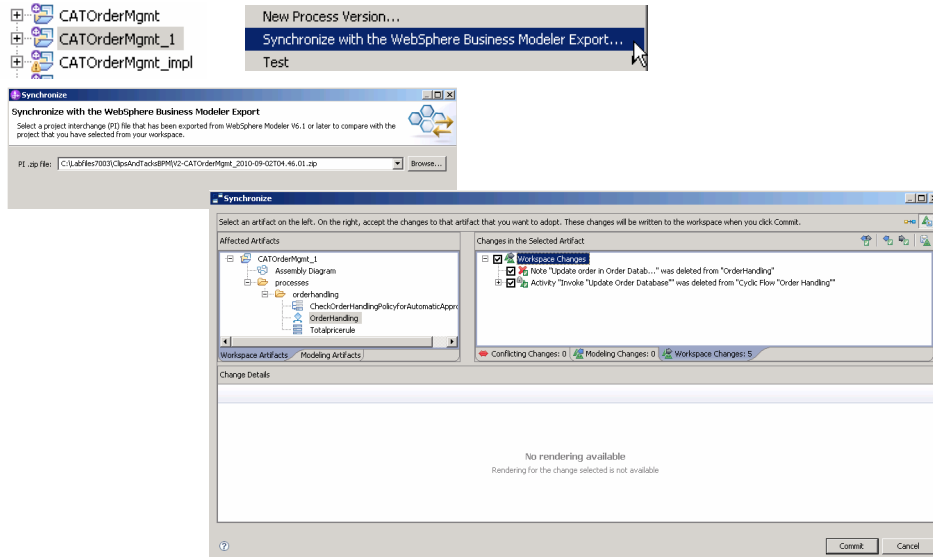
  

Target Project Names	
Modeler Project Name	Monitor Project Names
CATOrderMgmt	CATOrderMgmt_V2_Monitor

- Synchronize the process with Modeler export
- Synchronize the monitor model with Modeler export
- Now you are ready to deploy this as a new monitor model version

If you are maintaining your business measures models in WebSphere Business Modeler, you can use version handling with these models too. After changing the business measures model, you export it from Modeler, selecting the target as WebSphere Integration Developer. The export wizard will provide default names for the target projects for the process and for the target project for the monitor model. You should change these to include a unique identifier such as the version number. Then you can use wizards to synchronize the process and the monitor model. This will merge in any changes from Modeler or any implementation customizations that are in the workspace. Then you are ready to deploy the new process version and the new monitor model version.

## Modeler version – Synchronize the process



16

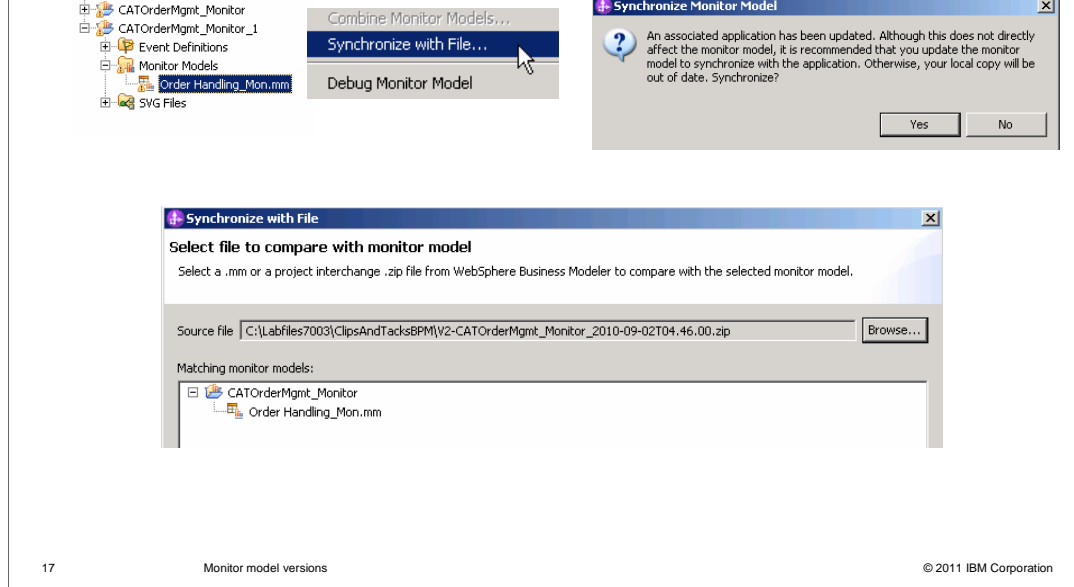
Monitor model versions

© 2011 IBM Corporation

Here are some screen captures that show how to synchronize your workspace process with the exported file from Modeler. You select the option 'Synchronize with the WebSphere Business Modeler Export', then select the process project interchange file that you exported. A synchronization window shows the differences between the process in the workspace and the exported Modeler file. You can pick the individual changes that you want to accept. In this case, it shows an activity was deleted in the workspace, but you can decide if you want to keep that change or revert it back to the original Modeler process.



## Modeler version – Synchronize the monitor model



Here are some screen captures that show how to synchronize your workspace monitor model with the exported file from Modeler. You select the option 'Synchronize with File'. You should normally select to synchronize the monitor model with monitored process application to pick up any changes made there. Then select the monitor model project interchange file that you exported.



## Modeler version – Accept changes

- Add Order\_Count to Order\_Handling2\_Cube.measure : MeasureType
- Add Rating to Order\_Handling2.metric : MetricType
- Add Rating to Order\_Handling2.metric : MetricType **Accept**
- Add Rating\_Value\_Change\_Trigger to Order\_Handling2.trigger : TriggerType **Reject**
- Add Ship\_Count to Order\_Handling2\_Cube.measure : MeasureType

The screenshot displays two panels from the IBM Modeler software. The left panel, titled 'Structural Changes', lists 29 visible changes. The change 'Add Rating to Order\_Handling2.metric : MetricType' is highlighted with a blue selection bar. A context menu is open over this item, showing 'Accept' and 'Reject' options. The right panel, titled 'Merged Result', shows a tree view of the model's structure. The 'Rating' metric is highlighted with a red rectangular box, indicating it has been successfully merged into the model.

These screen captures show how you can accept the individual changes that are coming from Modeler. After you have accepted the changes, the new metric shows in the merged result.

## Modeler version – Timestamp changes

The screenshot displays the IBM Modeler interface during a merge session. The 'Structural Changes' window lists 29 changes, with the following table showing the 'Timestamp' property change:

Property	Value
Description	Order Handling
Display Name	Order Handling
Id	Order_Handling_CATOrderMgmt.Processes
Target Namespace	Order_Handling_CATOrderMgmt.Processes
Timestamp	2010-09-01T05:38:18Z

Below this, two 'Visualization of Structural Changes' windows are shown. The left window (File Import) shows the 'Timestamp' property with a red box around the value '2010-09-02T04:45:50Z'. The right window (Workspace) shows the 'Timestamp' property with a red box around the value '2010-09-01T05:38:18Z'. At the bottom, two dialog boxes are visible: 'Save' with 'Right' selected, and 'Commit Merge Session' with a warning icon and 'Yes' selected.

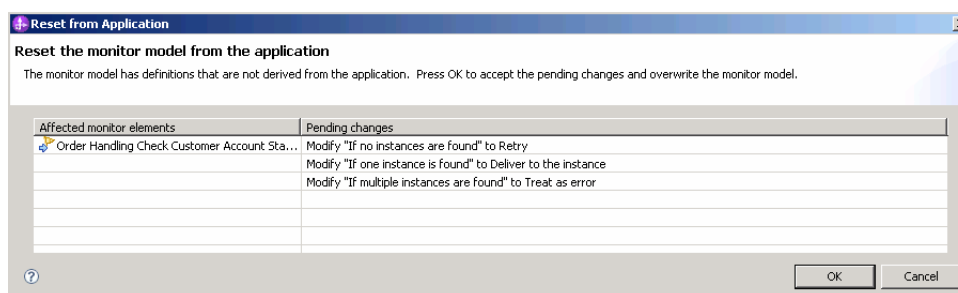
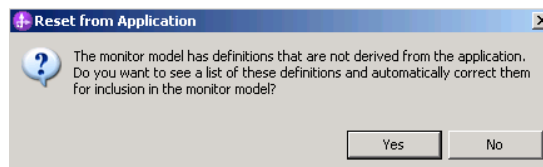
20

Monitor model versions

© 2011 IBM Corporation

Notice there is also a timestamp change between the Modeler export and your workspace. You want a new version, so accept the timestamp change. When you have reviewed and accepted the individual changes, save the results. Then there is a warning to remind you that you didn't accept all the changes, which is what you intended to do.

## Modeler version – Reset



When you close the compare window, this dialog is displayed if you have made changes to the monitor model that impact the process monitoring. In this case you made changes to the handling of an inbound event. These changes can affect the monitoring of the process so you can reset these changes here.

---

## Summary

- Covered monitor model version handling in IBM Business Monitor

In summary, this presentation covered the use of version handling with monitor models in IBM Business Monitor.



## Feedback

Your feedback is valuable

You can help improve the quality of IBM Education Assistant content to better meet your needs by providing feedback.

- Did you find this module useful?
- Did it help you solve a problem or answer a question?
- Do you have suggestions for improvements?

Click to send email feedback:

[mailto:iea@us.ibm.com?subject=Feedback about WBPM Monitor Model Versions.ppt](mailto:iea@us.ibm.com?subject=Feedback%20about%20WBPM%20Monitor%20Model%20Versions.ppt)

This module is also available in PDF format at: [../WBPM\\_Monitor\\_Model\\_Versions.pdf](..\\WBPM_Monitor_Model_Versions.pdf)

You can help improve the quality of IBM Education Assistant content by providing feedback.



## Trademarks, disclaimer, and copyright information

IBM, the IBM logo, ibm.com, and WebSphere are trademarks or registered trademarks of International Business Machines Corp., registered in many jurisdictions worldwide. Other product and service names might be trademarks of IBM or other companies. A current list of other IBM trademarks is available on the web at "[Copyright and trademark information](http://www.ibm.com/legal/copytrade.shtml)" at <http://www.ibm.com/legal/copytrade.shtml>

Java, and all Java-based trademarks and logos are trademarks of Oracle and/or its affiliates.

Other company, product, or service names may be trademarks or service marks of others.

THE INFORMATION CONTAINED IN THIS PRESENTATION IS PROVIDED FOR INFORMATIONAL PURPOSES ONLY. WHILE EFFORTS WERE MADE TO VERIFY THE COMPLETENESS AND ACCURACY OF THE INFORMATION CONTAINED IN THIS PRESENTATION, IT IS PROVIDED "AS IS" WITHOUT WARRANTY OF ANY KIND, EXPRESS OR IMPLIED. IN ADDITION, THIS INFORMATION IS BASED ON IBM'S CURRENT PRODUCT PLANS AND STRATEGY, WHICH ARE SUBJECT TO CHANGE BY IBM WITHOUT NOTICE. IBM SHALL NOT BE RESPONSIBLE FOR ANY DAMAGES ARISING OUT OF THE USE OF, OR OTHERWISE RELATED TO, THIS PRESENTATION OR ANY OTHER DOCUMENTATION. NOTHING CONTAINED IN THIS PRESENTATION IS INTENDED TO, NOR SHALL HAVE THE EFFECT OF, CREATING ANY WARRANTIES OR REPRESENTATIONS FROM IBM (OR ITS SUPPLIERS OR LICENSORS), OR ALTERING THE TERMS AND CONDITIONS OF ANY AGREEMENT OR LICENSE GOVERNING THE USE OF IBM PRODUCTS OR SOFTWARE.

© Copyright International Business Machines Corporation 2011. All rights reserved.