

Installing the fix packs for a J2EE Data Collector and Monitoring Agent

Slide 1

Tivoli

IBM

IBM Tivoli Composite Application Manager for J2EE V6.1

Installing the fix packs for a J2EE Data Collector and Monitoring Agent



This is a self-running demonstration that shows you how to complete a task.
Controls are available at the bottom of the screen.

© Copyright IBM Corporation 2011 All rights reserved.

Slide 2



Objectives

When you have completed this module, you can perform the following tasks:

- Install the J2EE Data Collector Fix Pack 5 and Interim Fix 4
- Install the J2EE Monitoring Agent Fix Pack 5 and Interim Fix 3

Installing the fix packs for a J2EE Data Collector and Monitoring Agent

Slide 3



Installing the fix packs for a J2EE Data Collector

Preparation

- Ensure that the 6.1 J2EE Data Collector is installed
- Verify that the **version.properties** file resides on the Data Collector

Step 1

Download the Data Collector Fix Pack 5 from this web address to a temporary directory:

<http://www-01.ibm.com/support/docview.wss?uid=swg24027244>

Before you install the fix pack, you must have the 6.1 J2EE Data Collector installed. Check the **version.properties** file on the Data Collector. The first fix pack you have to install is Fix Pack 5. Download the fix pack from the web address displayed to any temporary directory. In this example, the directory is `c:\temp\fp`.

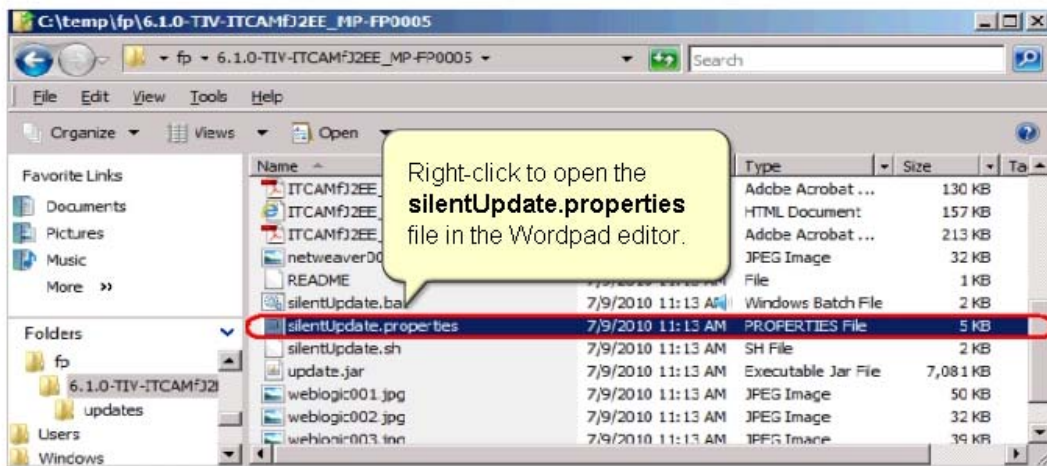
Installing the fix packs for a J2EE Data Collector and Monitoring Agent

Slide 4



Step 2

Extract the fix pack and edit the **silentUpdate.properties** file shown here



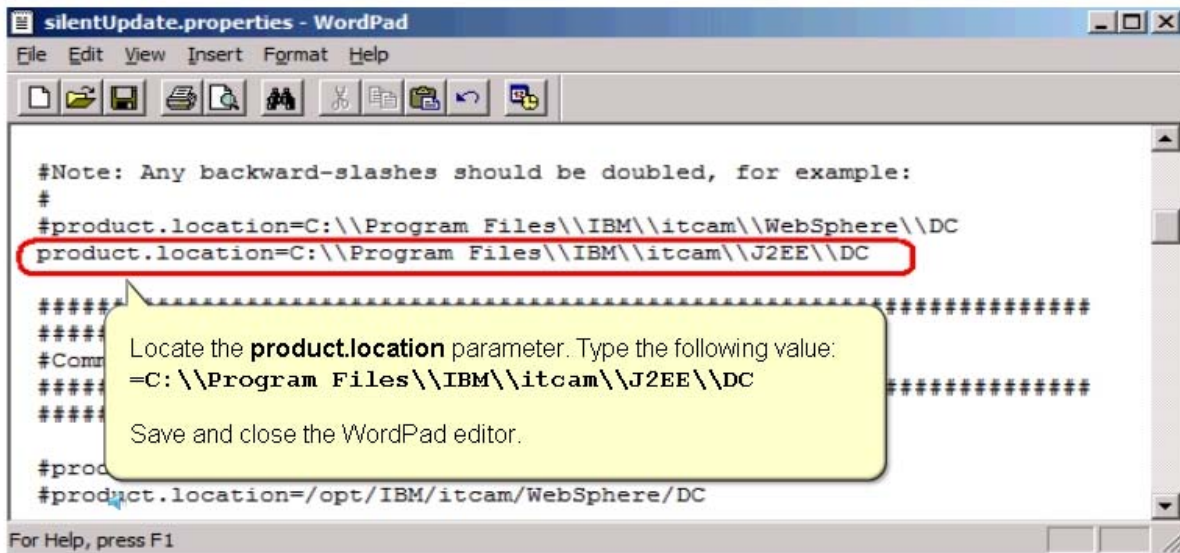
Installing the fix packs for a J2EE Data Collector and Monitoring Agent

Slide 5



Step 3

Edit the **product.location** parameter in the file



Installing the fix packs for a J2EE Data Collector and Monitoring Agent

Slide 6



Step 4

Set the JAVA_HOME variable

Open an Administrator Command Prompt and go to the C:\temp\fp\6.1.0-TIV-ITCAMfJ2EE_MP-FP0005 directory.

Run the these two commands:

```
set JAVA_HOME=C:\Progra~1\Java\Jre6  
set | findstr JAVA_HOME
```

```
Administrator: Command Prompt  
C:\temp\fp\6.1.0-TIV-ITCAMfJ2EE_MP-FP0005>set JAVA_HOME=C:\Progra~1\Java\Jre6  
C:\temp\fp\6.1.0-TIV-ITCAMfJ2EE_MP-FP0005>set | findstr JAVA_HOME  
JAVA_HOME=C:\Progra~1\Java\Jre6  
C:\temp\fp\6.1.0-TIV-ITCAMfJ2EE_MP-FP0005>
```

Installing the fix packs for a J2EE Data Collector and Monitoring Agent

Slide 7



Step 5

Install Fix Pack 5

5a. Run these three commands as illustrated:

```
silentUpdate.bat -prepareInstall  
silentUpdate.bat -install  
silentUpdate.bat -displayInstalledUpdates
```

```
Administrator: Command Prompt  
C:\temp\fp\6.1.0-TIU-ITCAMfJ2EE_MP-FP0005>silentUpdate.bat -prepareInstall  
Update installer version 6.1.0.5.9, build 20100708174044  
Logging details into C:\Program Files\IBM\itcam\J2EE\DC\logs\update\update_2011020175416.log  
JAVA_HOME should be set to C:\Program Files\ibm\itcam\J2EE\DC\installer\_uninst\java\jre  
Action: prepare install  
Finished successfully  
C:\temp\fp\6.1.0-TIU-ITCAMfJ2EE_MP-FP0005>  
C:\temp\fp\6.1.0-TIU-ITCAMfJ2EE_MP-FP0005>silentUpdate.bat -install  
Update installer version 6.1.0.5.9, build 20100708174044  
Logging details into C:\Program Files\IBM\itcam\J2EE\DC\logs\update\update_2011020175721.log  
JAVA_HOME should be set to C:\Program Files\ibm\itcam\J2EE\DC\installer\_uninst\java\jre  
Action: install  
Finished successfully  
C:\temp\fp\6.1.0-TIU-ITCAMfJ2EE_MP-FP0005>  
C:\temp\fp\6.1.0-TIU-ITCAMfJ2EE_MP-FP0005>silentUpdate.bat -displayInstalledUpdates  
Update installer version 6.1.0.5.9, build 20100708174044  
Logging details into C:\Program Files\IBM\itcam\J2EE\DC\logs\update\update_2011020180125.log  
JAVA_HOME should be set to C:\Program Files\ibm\itcam\J2EE\DC\installer\_uninst\java\jre  
Action: display installed updates  
Updates installed 10/20/11 5:59 PM  
6.1.0.5 FixPack 5 for ITCAMfJ2EE  
Finished successfully  
C:\temp\fp\6.1.0-TIU-ITCAMfJ2EE_MP-FP0005>
```

5b. Verify completion with the line starting with **Updates installed...**

Slide 8



Installing Interim Fix 4

- Download Interim Fix 4 from this web address into a temporary directory:
<https://www-304.ibm.com/support/docview.wss?uid=swg24028810>
- Repeat steps 1 through 5, as shown, to install Interim Fix 4

Installing the fix packs for a J2EE Data Collector and Monitoring Agent

Slide 10

Step 2

Verify that the Monitoring Agent Fix Pack 5 installation has completed

The screenshot shows two windows. The top window is 'Manage Tivoli Enterprise Monitoring Services - TEMS Mode - [Local Computer]'. It contains a table with the following data:

Service/Application	Task/SubSystem	Configured	Status	Startup	Account	Desktop	HotStdy	Version	Host	Port
Monitoring Agent for J2EE	Primary	Yes (TEMS)	Stopped	Auto	LocalSystem	No	No	06.20.05.00		

The bottom window is an 'Administrator: Command Prompt' showing the output of the command `kincinfo -i`. The output includes the following lines:

```
C:\IBM\ITM\BIN>kincinfo -i
***** Wed Oct 19 18:55:32 Eastern Daylight Time 2011 *****
User      : Administrator Group
Host Name : EMU2           Installer: Ver: 061007060
CandleHome: C:\IBM\ITM
Installtm: C:\IBM\ITM\InstallITM
*****
...Product Inventory
IN      Windows Install Component
        WINNT Version: 06.10.07.06 Build: 201002191753
IN      ITM6.x Agent Windows Install Component
        WINNT Version: 06.10.07.06 Build: 201002191753
GL      Tivoli Enterprise Monitoring
        WINNT Version: 06.10.07.06 B
UI      Tivoli Enterprise Services Us
        WINNT Version: 06.10.07.06 P
VJ      Monitoring Agent for J2EE
        WINNT Version: 06.20.05.00 Build: 201007092007
C:\IBM\ITM\BIN>
```

(a) You can verify that Fix Pack 5 installed using the Manage Tivoli Enterprise Monitoring Service. Look for the correct version number, which, in this example, is **06.20.05.00**.

(b) Alternatively, from an Administrator Command Prompt, run the command `kincinfo -i`.

(c) Locate the output line Monitoring Agent for J2EE. Look for the correct version number.

Slide 11



Installing the Monitoring Agent Interim Fix 3

Preparation

- Download the Monitoring Agent Interim Fix 3 from this web address:
<https://www-304.ibm.com/support/docview.wss?uid=swg24028357>
- Extract the compressed file to a temporary directory

Installing the fix packs for a J2EE Data Collector and Monitoring Agent

Slide 12



Step 1

Set the CANDLEHOME and PATCH_HOME variables

From a command prompt, run these two commands:

```
set CANDLEHOME=C:\IBM\ITM  
set PATCH_HOME=C:\temp\fp\6.2.0.5-TIV-ITCAM_J2EE_TEMA-IF003\  
6.2.0.5-TIV-ITCAM_J2EE_TEMA-IF003
```

```
Administrator: Command Prompt  
C:\IBM\ITM\BIN>set CANDLEHOME=C:\IBM\ITM  
C:\IBM\ITM\BIN>set PATCH_HOME=C:\temp\fp\6.2.0.5-TIV-ITCAM_J2EE_TEMA-IF003\6.2.0.5-TIV-ITCAM_J2EE_TEMA-IF003  
C:\IBM\ITM\BIN>
```

Installing the fix packs for a J2EE Data Collector and Monitoring Agent

Slide 13



Step 2

Install the Monitoring Agent Interim Fix 3 using the `itmpatch` command

(a) Run the `itmpatch -h %CANDLEHOME% -i %PATCH_HOME%` command.

```
C:\IBM\ITM\BIN>itmpatch -h %CANDLEHOME% -i %PATCH_HOME%
Command completed successfully.

C:\IBM\ITM\BIN>kincinfo -i
***** Wed Oct 19 19:02:36 Eastern Daylight Time 2011 *****
User       : Administrator Group   : NA
Host Name  : EMU2                 Installer: Ver: 061007060
CandleHome: C:\IBM\ITM
InstallItm: C:\IBM\ITM\InstallITM
*****
...Product Inventory

IN      Windows Install Component
        WINNT Version: 06.10.07.06 Build: 201002191753

IN      ITMG.x Agent Windows
        WINNT Version: 06.10

GL      Tivoli Enterprise Mon
        WINNT Version: 06.10

UI      Tivoli Enterprise Sev
        WINNT Version: 06.10.07.06 Build: 201002191753

YJ      Monitoring Agent for J2EE
        WINNT Version: 06.20.05.03 Build: 201007092007

C:\IBM\ITM\BIN>
```

(b) When the command completes, locate Monitoring Agent for J2EE and verify that the version is correct.

Slide 14



Summary

Now that you have completed this module, you can perform these tasks:

- Install the J2EE Data Collector Fix Pack 5 and Interim Fix 4
- Install the J2EE Monitoring Agent Fix Pack 5 and Interim Fix 3

Slide 15

Trademarks, copyrights, and disclaimers

IBM, the IBM logo, ibm.com, and Tivoli are trademarks or registered trademarks of International Business Machines Corp., registered in many jurisdictions worldwide. Other product and service names might be trademarks of IBM or other companies. A current list of other IBM trademarks is available on the web at "[Copyright and trademark information](http://www.ibm.com/legal/copytrade.shtml)" at <http://www.ibm.com/legal/copytrade.shtml>

THE INFORMATION CONTAINED IN THIS PRESENTATION IS PROVIDED FOR INFORMATIONAL PURPOSES ONLY. WHILE EFFORTS WERE MADE TO VERIFY THE COMPLETENESS AND ACCURACY OF THE INFORMATION CONTAINED IN THIS PRESENTATION, IT IS PROVIDED "AS IS" WITHOUT WARRANTY OF ANY KIND, EXPRESS OR IMPLIED. IN ADDITION, THIS INFORMATION IS BASED ON IBM'S CURRENT PRODUCT PLANS AND STRATEGY, WHICH ARE SUBJECT TO CHANGE BY IBM WITHOUT NOTICE. IBM SHALL NOT BE RESPONSIBLE FOR ANY DAMAGES ARISING OUT OF THE USE OF, OR OTHERWISE RELATED TO, THIS PRESENTATION OR ANY OTHER DOCUMENTATION. NOTHING CONTAINED IN THIS PRESENTATION IS INTENDED TO, NOR SHALL HAVE THE EFFECT OF, CREATING ANY WARRANTIES OR REPRESENTATIONS FROM IBM (OR ITS SUPPLIERS OR LICENSORS), OR ALTERING THE TERMS AND CONDITIONS OF ANY AGREEMENT OR LICENSE GOVERNING THE USE OF IBM PRODUCTS OR SOFTWARE.

© Copyright International Business Machines Corporation 2011. All rights reserved.