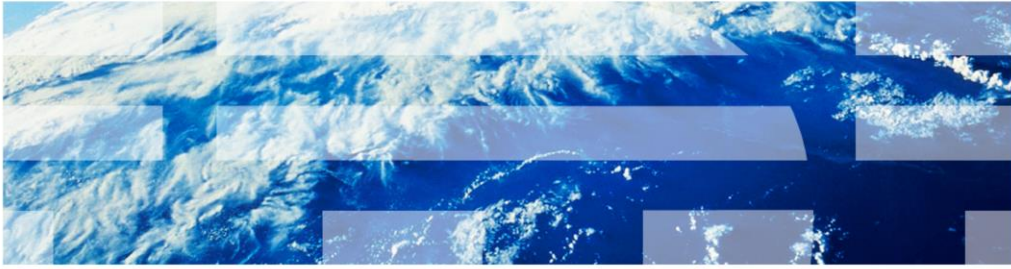

Business Process Management

Business Space powered by WebSphere

What is new in V7.5



© 2011 IBM Corporation

This presentation provides an overview of the new features in V7.5 for Business Space powered by WebSphere.

Goal and agenda

- Goal
 - Introduce the enhancements to Business Space in V7.5
- Agenda
 - Ability to customize the behavior and the appearance of a business space
 - Overview of customization capabilities
 - Introduction to WebDAV
 - Customizable components
 - Page Navigator widget
 - Widget personalization persistence

The goal of this presentation is to introduce you to the new features in V7.5 for Business Space powered by WebSphere. You will learn about new customization capabilities that will help you achieve the behavior and appearance that you want for your spaces, a new widget called Page Navigator and widget personalization persistence abilities.

Customization

This section describes the customization feature in business space version 7.5.

Default Business Space

Home Go to Spaces Manage Spaces Actions admin | Help | Log out

My default space

Initiate Tasks and Processes Work on tasks Manage Processes Manage Tasks Organize Work Edit Page

Task Definitions

All [Create](#)

Sort By Name

Approval
... requests your approval

Inquiry
... sends the following inquiry: ...

Task Information

Select the task and then select an action.

Process Information

Select the process and then select Open.

Status

All - Browse all [Actions](#)

Name	Status	Pr
Step: Approve or reject rec...	Completed	
Task: Submit requisition	Completed	
Task: Submit requisition	Completed	
Task: Submit requisition	Completed	

IBM. powered by WebSphere.

4 Business Space powered by WebSphere - What is new in V7.5 © 2011 IBM Corporation

The screen capture here shows a default business space.

Customization

Customized Business Space

The screenshot displays the IBM Business Space interface for a customized business space. The top navigation bar includes 'Home', 'Go to Spaces', 'Manage Spaces', and 'Actions'. The user is logged in as 'admin'. The main header shows 'Company Space' and 'UNDER CONSTRUCTION' banners. The left sidebar contains navigation options: 'Initiate Tasks and Processes', 'Work on tasks', 'Manage Processes', 'Manage Tasks', and 'Organize Work'. The main content area is divided into three panels:

- Task Definitions:** A list of tasks with a 'Create' button and a 'Sort By' dropdown set to 'Name'. Tasks include 'Approval' (requests your approval) and 'Inquiry' (sends the following inquiry...).
- Task Information:** A panel with the instruction 'Select the task and then select an action.'
- Process Information:** A panel with the instruction 'Select the process and then select Open.'

Below these panels is a 'Status' section with a table of task execution details:

Name	Status	Print	More
Step: Approve or reject rec...	Completed	Print	More
Task: Submit requisition	Completed	Print	More
Task: Submit requisition	Completed	Print	More
Task: Submit requisition	Completed	Print	More

The footer of the interface shows 'ABC Construction' on the left, the page number '5', 'Business Space powered by WebSphere - What is new in V7.5' in the center, and '© 2011 IBM Corporation' on the right.

The screen capture here shows how a customized business space looks. The next few slides describe what components of a business space can be customized.

Customization

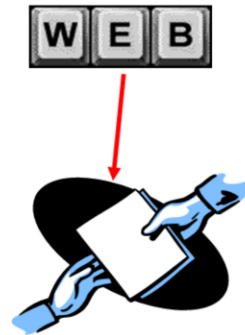
- Customizable areas include:
 - Login page
 - Theme
 - Banner
 - Space styles
 - Page layout
- Usage of Web-based Distributed Authoring and Versioning (WebDAV) to store and deploy artifacts used for customization

Your business space can be customized in various ways, from small changes like hiding banner actions for certain user roles to large changes like creating an entirely new theme. The areas that can be customized in Business Space version 7.5 are the login page, theme, banner, space styles and the page layout. Business Space uses Web-based Distributed Authoring and Versioning commonly referred to as WebDAV to store and deploy the artifacts used for customization.

What is WebDAV?

- Set of extensions to the Hypertext Transfer Protocol (HTTP)
 - HTTP provides read access
 - WebDAV provides write access
 - Collaborative management and editing of documents, files on remote web servers
- Most operating systems provide built-in support for WebDAV
- Various third-party tools available for connecting to a WebDAV folder
- WebDAV folder in Business Space –
`http://<BSPACE_HOST>:<BSPACE_PORT>/mum/mycontenthandler/mm/dav/filestore`
- Reference:

http://publib.boulder.ibm.com/infocenter/dmndhelp/v7r5mx/topic/com.ibm.wbpm.bspace.admin.doc/customizing/tadm_bsp_deploycustom.html



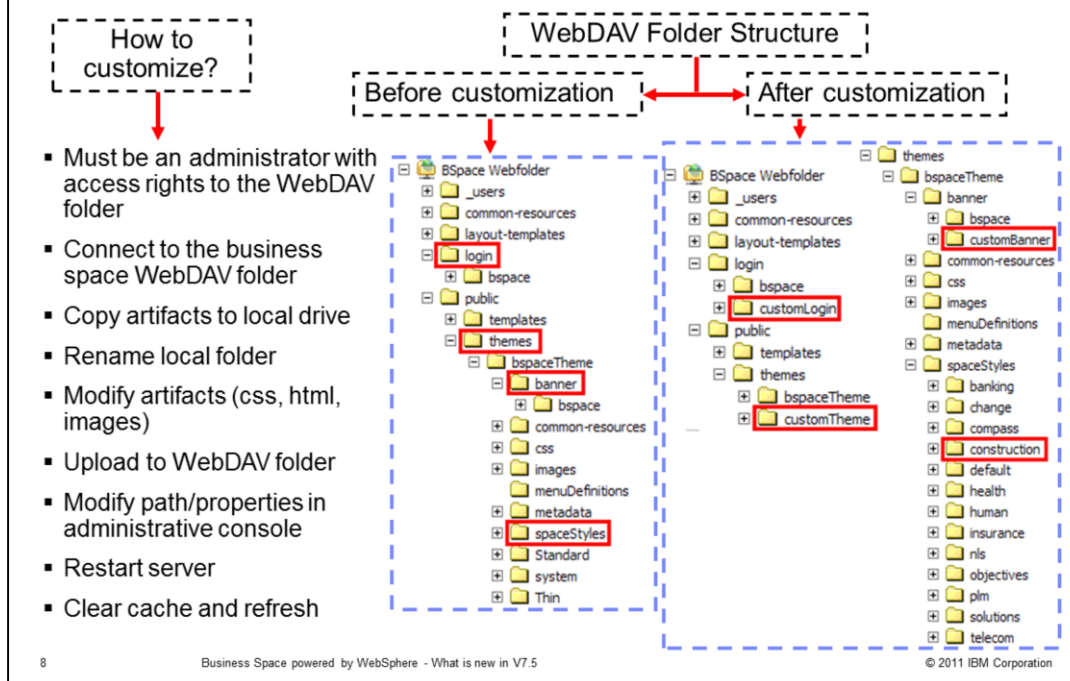
WebDAV is a set of extensions to the Hypertext Transfer Protocol commonly referred to as HTTP. HTTP provides read access whereas WebDAV provides read and write access to files on remote web servers. This allows collaborative management and editing of files on remote web servers. Most operating systems provide built-in support for WebDAV. Various third-party tools are also available for connecting to WebDAV folders.

A WebDAV folder that contains Business Space artifacts is identified by the URL specified here.

The product information center link that describes how to connect to a WebDAV folder using Windows is provided on the slide for reference.

Note that connecting to a WebDAV folder is not supported by Windows Server 2003. If you have Business Space installed on a Windows Server 2003 machine and you want to customize your business spaces, you need to connect using a different machine with a supported operating system. Alternatively, you can use a third-party tool to interact with WebDAV.

How to customize?



This slide talks about steps that you need to follow in order to customize business space artifacts. You must be an administrator and have access rights to the business space WebDAV folder.

The WebDAV folder shows the structure before any customization is represented by the screen capture at the center of the slide. The login folder contains artifacts used for rendering the login page and the themes folder contains artifacts that comprise an entire theme. Under the theme, the banner folder contains elements that make up a banner and spaceStyles folder contains all the styles that can be applied to a space. Each style has a corresponding sub folder under the spaceStyles folder with artifacts that form that style. For example, the banking folder under spaceStyles folder represents Banking style that you see in the style selection list when creating a space.

For customization, you need to connect to the WebDAV folder. This is described on the previous slide. Once you connect to the WebDAV folder, copy the artifacts that you want to customize along with the containing folders to a local drive. For example, to customize the login page, copy bspace folder under login folder to a local drive. Rename the copied folder on a local drive, for example, customLogin. The next step is to modify artifacts, for example, css file, html file. Add new images if required.

Once you are done making all the updates, upload the local folder to the WebDAV folder at the same level as the original folder. For example, upload customLogin folder under the login folder thus bspace and customLogin folder are at the same level. The screen capture on the right is an example of WebDAV folder structure after customized artifacts have been uploaded. There are new sub folders under login, themes, banner and spaceStyles folders.

After you upload the artifacts, modify affected properties or the path information to point to the new folders by logging onto administrative console where applicable. In some cases, you have to restart the server before the customization takes into affect. The last step is to clear browser cache.

Note that it is important to make copies of the artifacts and modify them thus maintaining the original artifacts installed with business space.

Customizing login page

- What can be customized
 - Image used as the overall background
 - Minimum space above the login fields
 - Look of the labels for the User ID and Password login fields
 - Color and location of the copyright text
- What cannot be customized
 - Look of the login fields' text boxes and the login button
- Reference:

<http://publib.boulder.ibm.com/infocenter/dmndhelp/v7r5mx/topic/com.ibm.wbpm.bspace.admin.doc/customizing/customizingthelloginpage.html>



You can make superficial changes to the login page. You can change the image used as an overall background to represent your company's logo and color. You can adjust the minimum space above the login fields. You can change the look of the labels for User ID and Password login fields, but, you cannot change the look of the login fields text boxes and the Login button. You can also change color and location of the copyright text. Note that for legal reasons, copyright information and the IBM and WebSphere logos should not be customized or hidden.

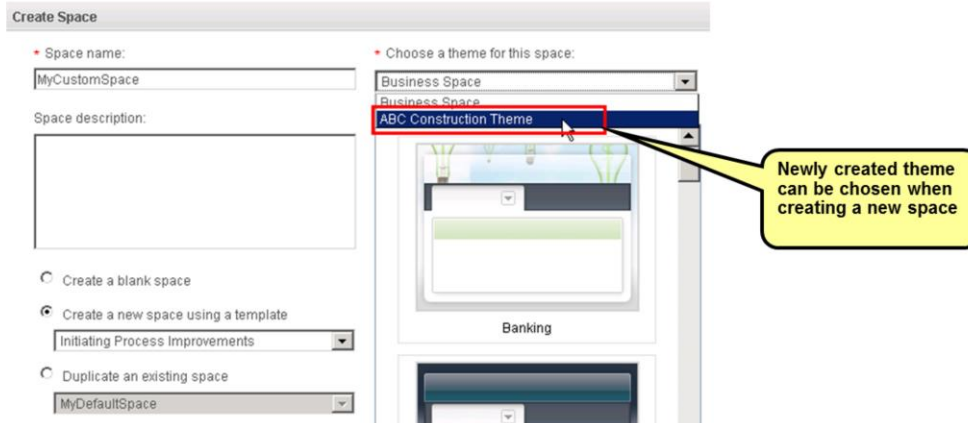
Check the product information center for detailed steps on login page customization. The link to the page is provided under Reference.

Customizing themes

- Create new themes
 - Apply to new spaces
 - Apply to spaces created before V7.5
- What can be customized
 - Page structure
 - Banner
 - Styles

- Reference:

http://publib.boulder.ibm.com/infocenter/dmndhelp/v7r5mx/topic/com.ibm.wbpm.bspace.admin.doc/customizing/tadm_bsp_custom_theme.html



10

Business Space powered by WebSphere - What is new in V7.5

© 2011 IBM Corporation

Business space comes with a default theme. All spaces are based on this theme by default. You can create new themes to get the structure and behavior that you want for your spaces. However, most customization can be achieved by changing banner, creating new space style in the default theme. These topics are covered in the subsequent slides.

If you create a new theme, you will see a combo box to choose a theme from when creating a new space. This combo box is not presented when only the default theme exists. The new theme can also be applied to spaces created before version 7.5 using the Space Manager -> Edit Settings dialog.

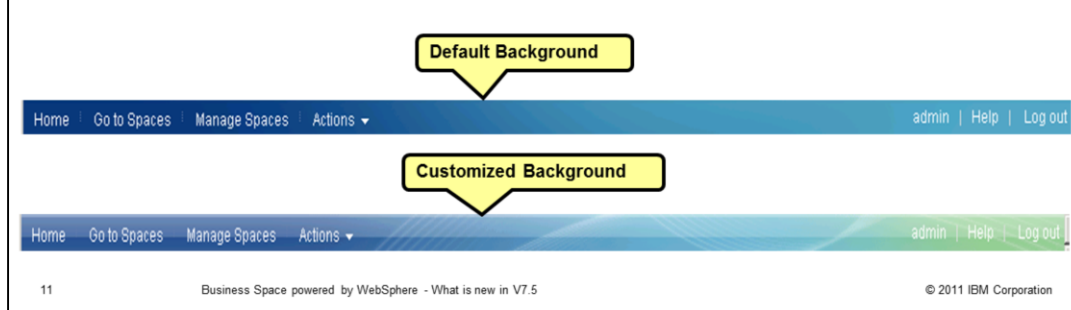
Customized themes must be maintained and updated manually. IBM® updates to the default theme artifacts are not applied during regular service or maintenance activities to customized themes.

Themes are implemented using HTML, CSS, JavaScript, the iWidget specification, and the Dojo widget library. Instructions on theme customization are in the product information center. The link under reference takes you to the information center.

Customizing banner

- What can be customized
 - Remove or hide the banner
 - Banner structure
 - Help link
 - Location, appearance, or content
 - Banner appearance
 - Icons, color, font
 - Logout link behavior
- Reference:

http://publib.boulder.ibm.com/infocenter/dmndhelp/v7r5mx/topic/com.ibm.wbpm.bspace.admin.doc/customizing/cadm_bsp_customizebanner.html



The banner is located at the top of a business space. By default, the banner displays the name of the space, menus, current user name and links to documentation and log out from Business Space.

You can remove or hide the entire banner. You can modify the banner structure by adding/removing elements from the banner. You can also modify what documentation the Help link should open. These updates are done by modifying the banner.html file.

You can change the appearance of the banner with different colors, icons and font by modifying the style sheet banner.css.

You can update the behavior of the Logout link.

The link under reference takes you to the information center for details on customizing the banner.

Customizing banner – modified help link

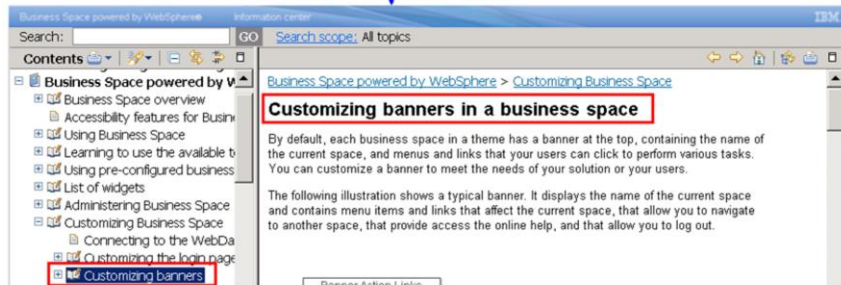
Default Help Link

http://localhost:9080/BusinessSpaceHelp/index.jsp?topic=/com.ibm.wbpm.bspace.help.main.doc/welcome/bspace_welcome.html

admin **Help** Log out

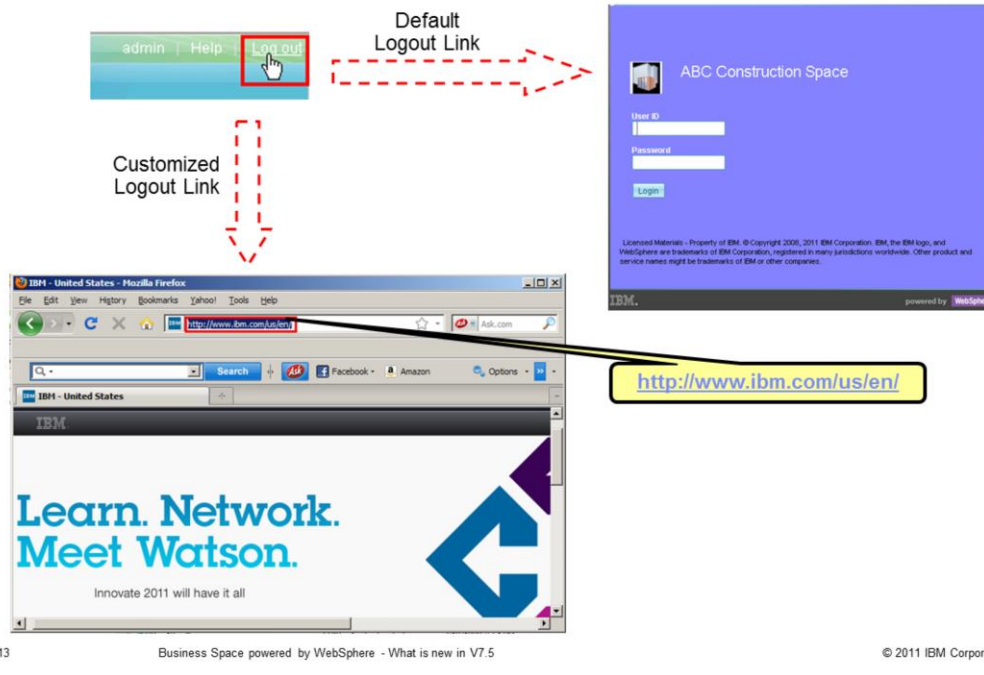
Customized Help Link

http://bidoc.torolab.ibm.com/review/7500/topic/com.ibm.wbpm.bspace.admin.doc/customizing/cadm_bsp_customizebanner.html



The default link points to the welcome page in the information center. You can customize the help link as mentioned in the previous slide by editing the banner.html file. The screen capture here shows the default and the modified help links

Customizing banner – modified logout behavior



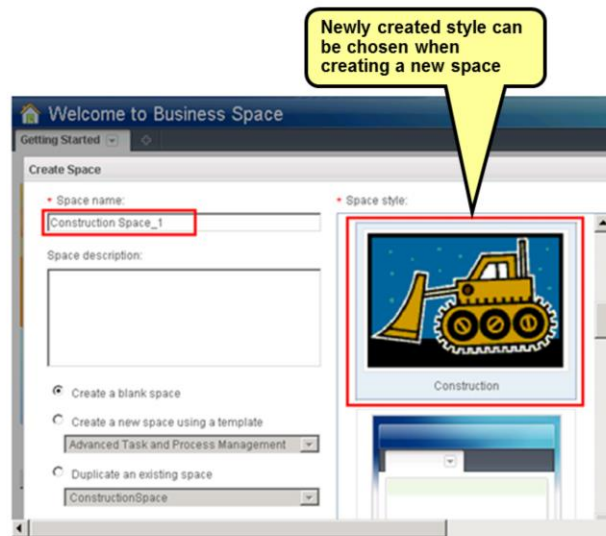
The default logout from a business space launches the login page of the business space. In the example in this slide, logout from a business space takes you to the IBM website.

Customizing space styles

- Create new custom styles
 - Apply new styles to existing spaces

- What can be customized
 - Background image
 - Footer at the bottom
 - Menu borders, text, and background color
 - Dialogs' style
 - Page navigation tabs
 - Widget toolbar

- Reference:



http://publib.boulder.ibm.com/infocenter/dmndhelp/v7r5mx/topic/com.ibm.wbpm.bspace.admin.doc/customizing/tadm_customizingstyles_ovw.html

14

Business Space powered by WebSphere - What is new in V7.5

© 2011 IBM Corporation

A style in business space defines overall and background color, image, header, footer, look of a menu and menu items, look of a dialog, page navigation tabs and widget toolbar. Business space provides many styles to choose from. You can create new styles in addition to these. If you create a new style, you can apply it to an existing business space using the Space Manager -> Edit Settings dialog.

When creating a new style, look at the existing styles and find one that is the closest match to what you want to do. The style artifacts are located in the themes/bspaceTheme/spaceStyles WebDAV folder with a name that corresponds to the style. For example, artifacts for the style Health are located under themes/bspaceTheme/spaceStyles/health folder. Once you have determined the closest style, copy it's artifacts to a local folder as a starting point and customize those to suit your needs.

Refer to the product information center as specified on the slide for instructions on creating a new style and customizing it.

Customizing space styles

The screenshot illustrates the customization of space styles in IBM Business Space. It shows two examples of space headers and their corresponding menu items.

- Header per the selected style:** A dark blue header for "Construction Space_1" with "UNDER CONSTRUCTION" repeated twice.
- Footer per the default style:** A grey footer with the IBM logo and "powered by WebSphere".
- Footer per the selected style:** A purple header for "ABC Construction" with a small profile icon.
- Menu per the default style:** A menu for "Welcome to Business Space" with items: Edit Settings..., Show Link..., Display on a Web Page..., Reorder Page..., and Delete.
- Menu per the selected style:** A menu for "Construction Space_1" with items: Edit Settings..., Show Link..., Display on a Web Page..., Reorder Page..., and Delete.

At the bottom of the slide, the text reads: "15 Business Space powered by WebSphere - What is new in V7.5 © 2011 IBM Corporation".

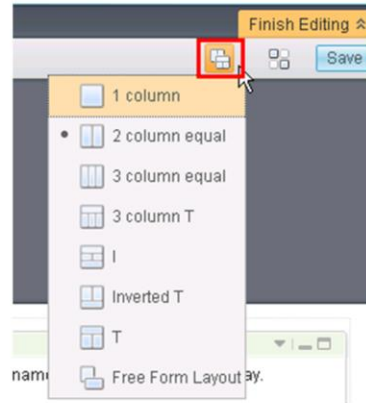
Customized header, footer, menu and menu items are shown in the example here.

Customizing page layout

- Create new custom page layout
 - Layout directory name as a unique identifier for the layout
 - Each layout has four files
 - layout.html - core structure of the page layout
 - metadata.properties - path name for the icon displayed in the layout selection menu
 - icon.gif - image used in the layout selection menu
 - metadata\localized_language.properties - title and description of the layout in supported locales

- Reference:

http://publib.boulder.ibm.com/infocenter/dmndhelp/v7r5mx/topic/com.ibm.wbpm.bspace.admin.doc/customizing/cadm_bsp_custompagelayout.html



Business Space provides a set of page layouts that can be applied to your spaces. You can create a new page layout per your requirement. This new layout is added to the layout selection list. Instructions on creating a new page layout can be found on the product information center.

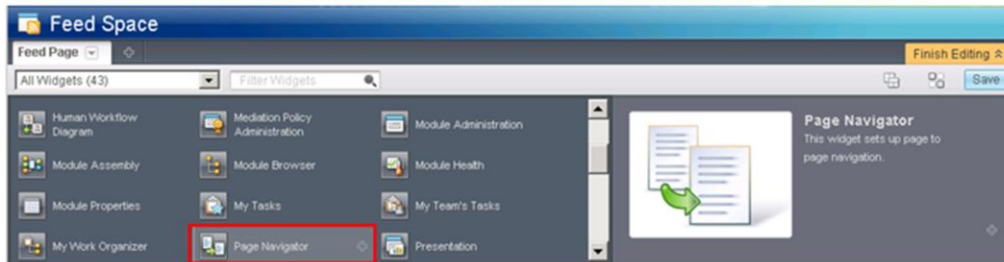
Other enhancements

This section describes other enhancements.

Page Navigator widget

- Navigate to a different page from within the current page
 - Switch to the target page from the current space
 - Switch to the target page from a different space
 - Open the target page in the current space temporarily with a visual indicator
 - An orange line at the top of a tab
 - Close temporarily visible page
 - The last visited page is then seen
- Wiring to trigger a Page Navigator
- Page references resolved during exporting/importing of pages/spaces
- Reference:

<http://publib.boulder.ibm.com/infocenter/dmndhelp/v7r5mx/topic/com.ibm.wbpm.bspace.ic.main.doc/framework/pagenavigator.html>



18

Business Space powered by WebSphere - What is new in V7.5

© 2011 IBM Corporation

Page Navigator widget is new to version 7.5. This widget allows automatic navigation from one page to another. The target page can be a page in the current business space or a page from a different business space. If you are an editor of a page, you can use this widget to define the page navigation behavior. You can specify one of the three actions namely switch, open or close in the widget's settings to change the page that you can see.

The page navigator can switch to the target page in the current space or in a different space. If the target page is in the current space, then the behavior is as if the tab for that page is selected. If the target page is in a different space, then the current space is closed and the target page's parent space is opened.

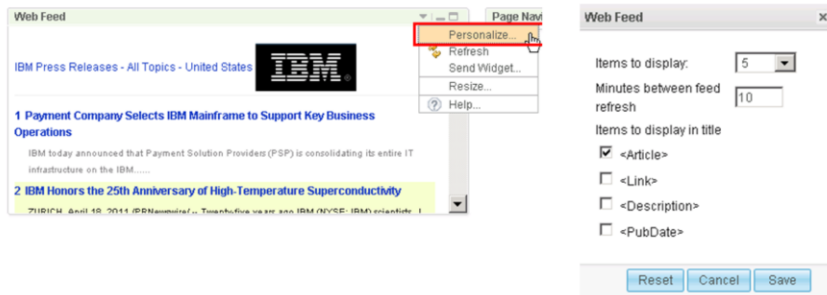
The page navigator can open the target page from a different space in the current space temporarily. The temporary page tab has an orange line at the top to indicate that it belongs to a different space.

The page navigator can close the temporarily opened page. The last visited page is then seen.

Once you are done specifying the settings, you can hide this widget from the page to reduce the clutter. Hiding the widget does not affect its function.

Widget personalization persistence

- 'Edit' mode changes apply to all users
- 'View' mode changes apply to the current user
- Explicit option on some widgets



- Implicit personalization on some widgets
- Reference:

<http://publib.boulder.ibm.com/infocenter/dmndhelp/v7r5mx/topic/com.ibm.wtbp.mospace.ic.main.doc/concepts/widgetconfigurationandpersonalization.html>

In the versions before 7.5, you can customize widget content, for example, set list filters, set table sort order, set column widths, and so on in view mode. However, when you return to Business Space, these changes are lost. Widget personalization persistence feature in version 7.5 allows widget attributes to be modified and persisted per user basis.

When you configure widget content when the page is in view mode, all aspects of your configuration apply only to you and not to any other user of the page. When you return to Business Space, you see widget content as last configured in view mode.

When you configure widget content when the page is in edit mode, all aspects of your configuration apply to all users of the page.

Changes made in the view mode overwrite the changes made in the edit mode.

An explicit Personalize option is available for some widgets, for example, Feed widget. Some widgets use implicit personalization. These widgets remember previous settings without requiring any explicit user action.

Business space stores a limited number of personalization per user. When the limit is reached, it replaces the oldest settings with the most recent ones.

Summary

- Business space customization
 - Ability to customize the behavior and the appearance of a business space
 - Login page
 - Theme
 - Banner
 - Space styles
 - Deploying of the customized artifacts using Web-based Distributed Authoring and Versioning (WebDAV)
- Addition of a new widget called Page Navigator
 - Allows navigation from one page to another page in the same or different space
- Widget Personalization
 - Persistence of user specific personalization of widget content
 - Explicit/Implicit persistence

In this presentation you were introduced to the new features in V7.5 for Business Space powered by WebSphere. Topics that were covered include areas that can be customized, usage of Web-based Distributed Authoring and Versioning for storing and deploying of artifacts, the new Page Navigator widget and widget personalization persistence.

Trademarks, disclaimer, and copyright information

IBM, the IBM logo, ibm.com, and WebSphere are trademarks or registered trademarks of International Business Machines Corp., registered in many jurisdictions worldwide. Other product and service names might be trademarks of IBM or other companies. A current list of other IBM trademarks is available on the Web at "[Copyright and trademark information](http://www.ibm.com/legal/copytrade.shtml)" at <http://www.ibm.com/legal/copytrade.shtml>

THE INFORMATION CONTAINED IN THIS PRESENTATION IS PROVIDED FOR INFORMATIONAL PURPOSES ONLY. in the United States, other countries, or both.

THE INFORMATION CONTAINED IN THIS PRESENTATION IS PROVIDED FOR INFORMATIONAL PURPOSES ONLY. WHILE EFFORTS WERE MADE TO VERIFY THE COMPLETENESS AND ACCURACY OF THE INFORMATION CONTAINED IN THIS PRESENTATION, IT IS PROVIDED "AS IS" WITHOUT WARRANTY OF ANY KIND, EXPRESS OR IMPLIED. IN ADDITION, THIS INFORMATION IS BASED ON IBM'S CURRENT PRODUCT PLANS AND STRATEGY, WHICH ARE SUBJECT TO CHANGE BY IBM WITHOUT NOTICE. IBM SHALL NOT BE RESPONSIBLE FOR ANY DAMAGES ARISING OUT OF THE USE OF, OR OTHERWISE RELATED TO, THIS PRESENTATION OR ANY OTHER DOCUMENTATION. NOTHING CONTAINED IN THIS PRESENTATION IS INTENDED TO, NOR SHALL HAVE THE EFFECT OF, CREATING ANY WARRANTIES OR REPRESENTATIONS FROM IBM (OR ITS SUPPLIERS OR LICENSORS), OR ALTERING THE TERMS AND CONDITIONS OF ANY AGREEMENT OR LICENSE GOVERNING THE USE OF IBM PRODUCTS OR SOFTWARE.

© Copyright International Business Machines Corporation 2011. All rights reserved.