

WebSphere Business Process Management Business Space powered by WebSphere

Overview of what is new



© 2009 IBM Corporation

This presentation provides an introduction to what is new for WebSphere® Business Space V7.

Goals

- Goal of this presentation
 - Introduce new features for WebSphere Business Space V7.0 in the these areas:
 - New foundation
 - The Business Space URL
 - Home space and welcome
 - Themes and icons
 - The palette
 - User customizations
 - Template management
 - Send widget

In this presentation you will learn about what is new with WebSphere Business Space V7. The most significant change with WebSphere Business Space is the foundation. With this release, WebSphere Business Space has been ported to the Lotus® Mashups Framework. You will see changes in the home space, themes and icons, template management, and the widget menus. The Business Space concepts introduced in previous releases have been preserved while taking advantage of the richness of the mashups framework.

The new foundation

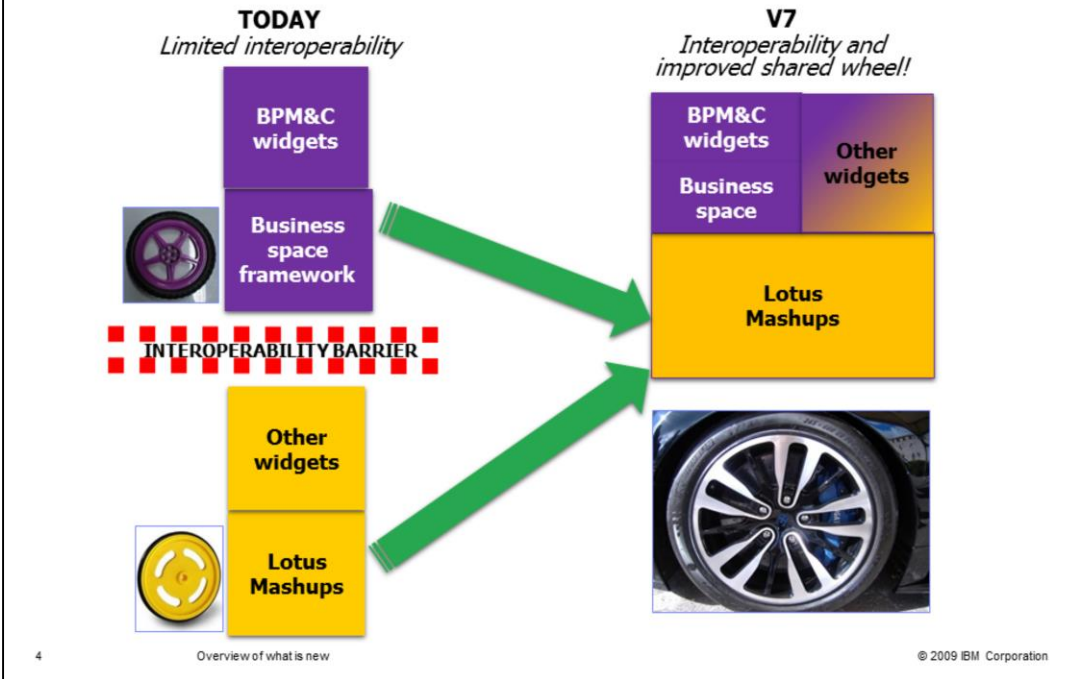
- WebSphere Business Space framework has been rebased on Lotus Mashups V2.0
- Provides new opportunity for interoperability with other applications
 - WebSphere Portal Server 6.1.5
 - Widgets registered in the Mashups Infohub
- A widget development toolkit is available
- All of the WebSphere Business Process Management widgets have been converted to Dojo 1.3.2

WebSphere Business Space V7 has been ported to the Lotus Mashups V2.0 framework. This means that all of the widgets in the WebSphere Business Process Management suite have been converted to Dojo 1.3.2 widgets.

What this provides is a standard platform for the widgets so they can now interoperate with other widgets based on mashup applications. Most notably is the WebSphere Portal Server 6.1.5. Although the Mashup Infohub is not included with the WebSphere Business Space, the Business Space widgets can interoperate with widgets that have been registered in an infohub.

With the conversion to Lotus Mashups and Dojo 1.3.2, you also get a complete widget development toolkit to help you create your own custom widgets.

What is changing in Business Space V7



The picture here illustrates the new improved interoperability that comes with the move to Lotus Mashups.

Previously there were two separate frameworks, WebSphere Business Space and Lotus Mashups, which did not interoperate. By rebasing the WebSphere Business Space on Lotus Mashups, there is now a single framework.

The Business Space URL

- With the conversion to Lotus Mashup the URL has changed
 - Transparent to users initially
 - Still use

`<host>:<port>/BusinessSpace`

Will be redirected to:

`<host>:<port>/mum/resources/bootstrap/login.jsp`

- Other conversions are made in the background to provide compatibility with previous versions Business Space
 - Bookmark redirect

The universal resource locator, the URL, is the Web address by which you open the WebSphere Business Space. Because of the change to Lotus Mashups, this has changed. You will still be able to use the friendly Business Space URL but after you have made the connection, you will notice that you have been redirected to the new URL. The 'mum' in the URL stands for mash up manager.

A URL that has been saved from a previous version of WebSphere Business Space is recognized and you are automatically redirected to the proper location.

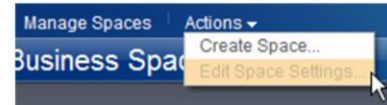
Home space and welcome

- The default welcome experience is new and improved
 - Links to information for getting started and creating your own Business Spaces
- The Home page experience is customizable by a Business Space administrator, for example superuser
 - Can create a common home for all users

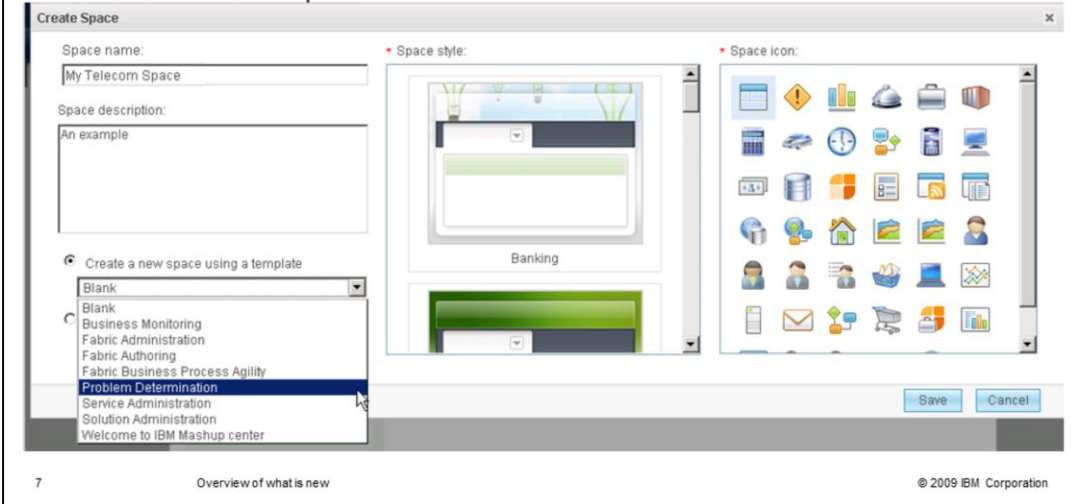
When you log into the WebSphere Business Space for the first time you will be taken to the home page. By default the home page is the 'Welcome to Business Space' widget. Here you will find links for learning about business space concepts, how to create your own business space and how to compose pages by adding and wiring widgets. There are also short demos on the key topics that provide visual examples.

The home page is fully customizable by the Business Space administrator so that you can create your own personalized welcome experience for your organization.

Themes and icons



- When creating a new Business Space you can now choose a theme/style and an icon
 - Space Manger
 - Actions → Create Space



After reading the documentation, the next step is to create your own business space. you will notice that there are several ways to create a business space, the Space manager in the menu bar, the button in the welcome page, and the menu item off the Actions menu.

Whichever path you take you will end up at the 'Create Space' dialog shown here.

This is new. The basics are the same, that is, the name, description and template. But now you can also choose from a variety of space styles and icons. The styles and icons will help you quickly identify your business space and add that personal touch. The icon will show up to the left of the business space name in the banner and in lists.

IBM

The palette

- The palette is very new and different
 - Nice icons and display
 - Filtering and search options
 - Widget preview on the right
 - Tracks the currently selected widget in the palette
- Layout options from the page tab, drop down menu

8 Overview of what is new © 2009 IBM Corporation

Constructing your own page is now much easier with the new palette.

The new palette presents the available widgets in an icon list that can be grouped by templates. The list can be refined further by using the search feature, which searches the widget names and the descriptions.

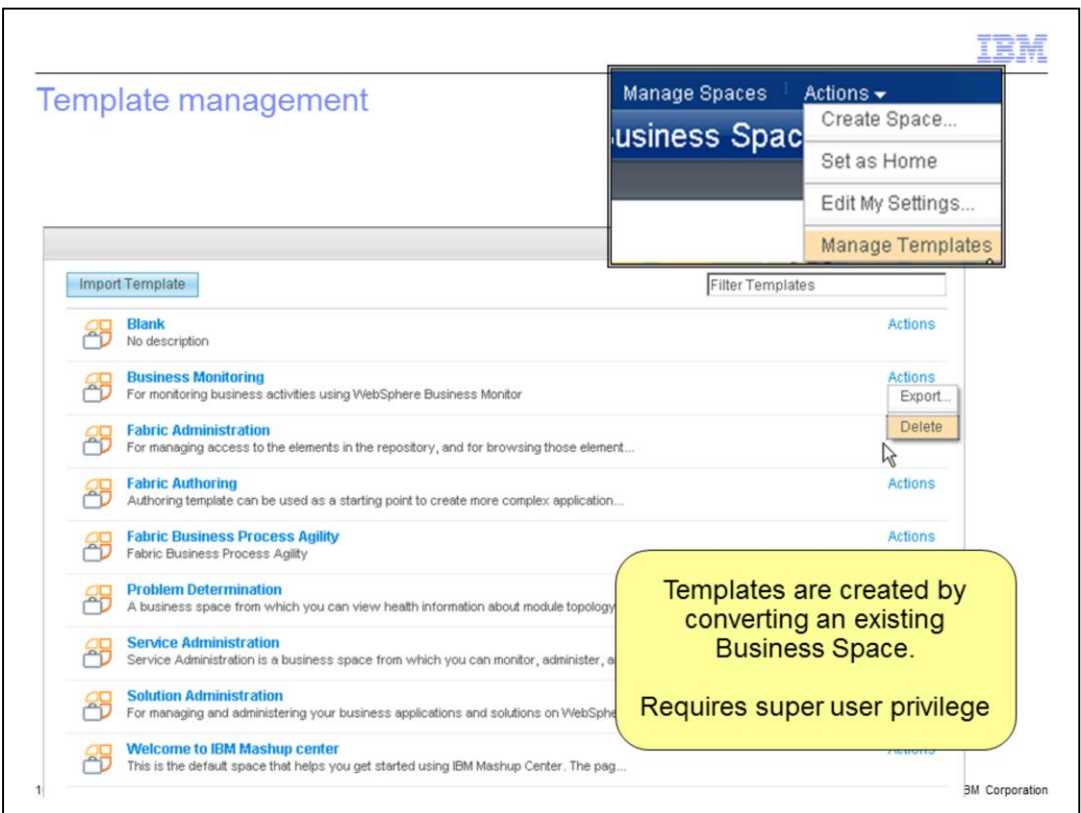
Holding the mouse over one of the widgets will display the sample in the preview pane along with the description. To add a widget to your page, just drag it from the palette and place it on the page. There are visual cues to help you place it within the current layout.

User customizations

- Certain settings are persisted per user
 - Min, max and resize
- Changes made in edit mode effect all users of the page
 - The personalized actions should always override the global changes made in edit mode
- Major changes like adding columns of course will override the personal settings
 - The width goes with the column and is not personally persisted

A nice new feature of WebSphere Business Space V7 is the ability to customize the widget layout. You can make it just the way you want it, and have it remember those setting the next time you log in. The settings that are persisted are the minimize, maximize and resize.

It is good to note that the when someone makes changes to the layout while in edit mode, that your settings will over ride theirs. The only exception is the column layout. The width of the widget is associated to the column and is not personally persisted.



A super user can convert a business space into a template from the actions menu in the manage business space dialog.

When logged in as a super user, you will also see a few extra options available from the 'Actions' menu option on the main toolbar.

The 'Manage Templates' option invokes the dialog shown here, where you can import, export and delete existing business space templates.

Send widget enhancement

- Allows you to create a human task from an alert
 - Not new, but improved
- Part of business process choreographer
- Allows one to create a human task and add additional contextual information.
 - Add the alert information to the human task so they will have the information they need to complete the task
 - Now can add multiple pieces of data
 - Example: a Web feed and a business rule

The send widget is not new to V7 but has been enhanced so that you can now add multiple pieces of data to the task.

For example, when viewing the alerts widget, you might notice something that requires attention.

You can create a new user task directly from the widget and assign the task to someone for investigation. Now you can add additional information such as a Web feed and a business rule.

Summary

- New Lotus Mashups foundation
- The Business Space URL
- Home space and welcome
- Themes and icons
- The palette
- User customizations
- Template management
- Send widget

Although WebSphere Business Space is now running on Lotus Mashups, it retains the unique Business Space concepts you have become familiar with in previous releases. The enhancements you will notice immediately are the new home space and welcome page, and new options for customizing your business spaces with themes and icons. Then there is a new palette with search, filtering and previews.

The template management and send widget are improvements to existing features.

Trademarks, copyrights, and disclaimers

IBM, the IBM logo, ibm.com, and the following terms are trademarks or registered trademarks of International Business Machines Corporation in the United States, other countries, or both:

Lotus WebSphere

If these and other IBM trademarked terms are marked on their first occurrence in this information with a trademark symbol (® or ™), these symbols indicate U.S. registered or common law trademarks owned by IBM at the time this information was published. Such trademarks may also be registered or common law trademarks in other countries. A current list of other IBM trademarks is available on the Web at "Copyright and trademark information" at <http://www.ibm.com/legal/copytrade.shtml>

Other company, product, or service names may be trademarks or service marks of others.

Product data has been reviewed for accuracy as of the date of initial publication. Product data is subject to change without notice. This document could include technical inaccuracies or typographical errors. IBM may make improvements or changes in the products or programs described herein at any time without notice. Any statements regarding IBM's future direction and intent are subject to change or withdrawal without notice, and represent goals and objectives only. References in this document to IBM products, programs, or services does not imply that IBM intends to make such products, programs or services available in all countries in which IBM operates or does business. Any reference to an IBM Program Product in this document is not intended to state or imply that only that program product may be used. Any functionally equivalent program, that does not infringe IBM's intellectual property rights, may be used instead.

THE INFORMATION PROVIDED IN THIS DOCUMENT IS DISTRIBUTED "AS IS" WITHOUT ANY WARRANTY, EITHER EXPRESS OR IMPLIED. IBM EXPRESSLY DISCLAIMS ANY WARRANTIES OF MERCHANTABILITY, FITNESS FOR A PARTICULAR PURPOSE OR NON-INFRINGEMENT. IBM shall have no responsibility to update this information. IBM products are warranted, if at all, according to the terms and conditions of the agreements (for example, IBM Customer Agreement, Statement of Limited Warranty, International Program License Agreement, etc.) under which they are provided. Information concerning non-IBM products was obtained from the suppliers of those products, their published announcements or other publicly available sources. IBM has not tested those products in connection with this publication and cannot confirm the accuracy of performance, compatibility or any other claims related to non-IBM products.

IBM makes no representations or warranties, express or implied, regarding non-IBM products and services.

The provision of the information contained herein is not intended to, and does not, grant any right or license under any IBM patents or copyrights. Inquiries regarding patent or copyright licenses should be made, in writing, to:

IBM Director of Licensing
IBM Corporation
North Castle Drive
Armonk, NY 10504-1785
U.S.A.

Performance is based on measurements and projections using standard IBM benchmarks in a controlled environment. All customer examples described are presented as illustrations of how those customers have used IBM products and the results they may have achieved. The actual throughput or performance that any user will experience will vary depending upon considerations such as the amount of multiprogramming in the user's job stream, the I/O configuration, the storage configuration, and the workload processed. Therefore, no assurance can be given that an individual user will achieve throughput or performance improvements equivalent to the ratios stated here.

© Copyright International Business Machines Corporation 2009. All rights reserved.

Note to U.S. Government Users - Documentation related to restricted rights-Use, duplication or disclosure is subject to restrictions set forth in GSA ADP Schedule Contract and IBM Corp.