

README for IBM Fault Analyzer for Eclipse 12.1.0.1

Copyright statement

© Copyright IBM® Corporation 2012. All rights reserved. For legal information, see <http://www.ibm.com/legal/copytrade.shtml>

Contents

- Changelog
- System requirements and prerequisites
- Downloading IBM Fault Analyzer for Eclipse 12.1.0.1
- Installing IBM Fault Analyzer for Eclipse 12.1.0.1 into CICS Explorer
- Getting started using IBM Fault Analyzer for Eclipse 12.1.0.1
- Technical support

Changelog

12.1.0.1

- Usernote inserts as floating windows
- Markers view shows fault entry specific usernotes
- Cached fault entry tree collapsed by default
- Minidump node in report outline
- Fast large minidump performance
- Define system from add system dialog
- Minidump navigation controls
- Column filtering fixed
- Temporary column retained when sorting and filtering
- Better column configuration management

12.1.0.0

- Uses the CICS Explorer common authentication framework
- Uses the PD Tools Common Component server
- Java dependency removed from server

- Creation of local views
- Usability enhancements

System requirements and prerequisites

The following minimum hardware levels are required to run the CICS Explorer and are therefore applicable to IBM Fault Analyzer for Eclipse 12.1.0.1:

- CPU - Intel® Pentium® 4 or equivalent.
- RAM - 768 MB in addition to the operating system requirements.
- Hard disk - 500 MB available space.

One of the following levels of Windows operating system software is required to install the CICS Explorer and is therefore applicable to IBM Fault Analyzer for Eclipse 12.1.0.1:

- Microsoft® Windows® XP 32-bit
- Microsoft Windows Vista 32-bit
- Microsoft Windows Server 2003 32-bit
- Microsoft Windows Server 2008 32-bit

The following levels of software required to install the IBM Fault Analyzer for Eclipse 12.1.0.1:

- One of the following Eclipse-based platforms:
 - CICS Explorer 1.1.1 (for Windows), or later
 - IMS Enterprise Suite Explorer 2.1.2, or later
- Fault Analyzer for z/OS Version 12.1 or later

The IBM Fault Analyzer for Eclipse 12.1.0.1 is available in the following national languages:

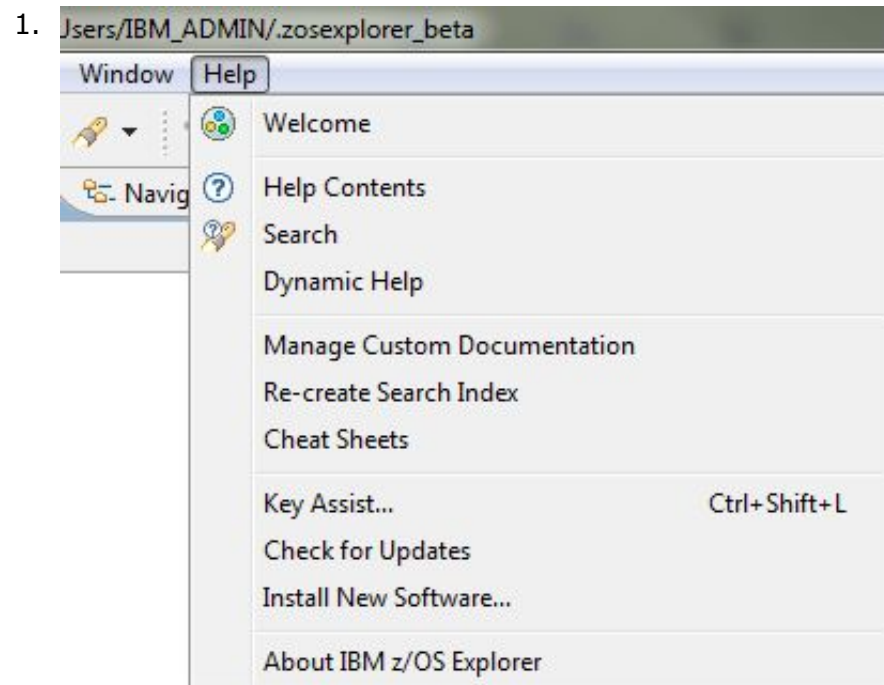
- English
- Japanese
- Korean

Downloading IBM Fault Analyzer for Eclipse 12.1.0.1

The IBM Fault Analyzer for Eclipse 12.1.0.1 can be downloaded from either of the following:

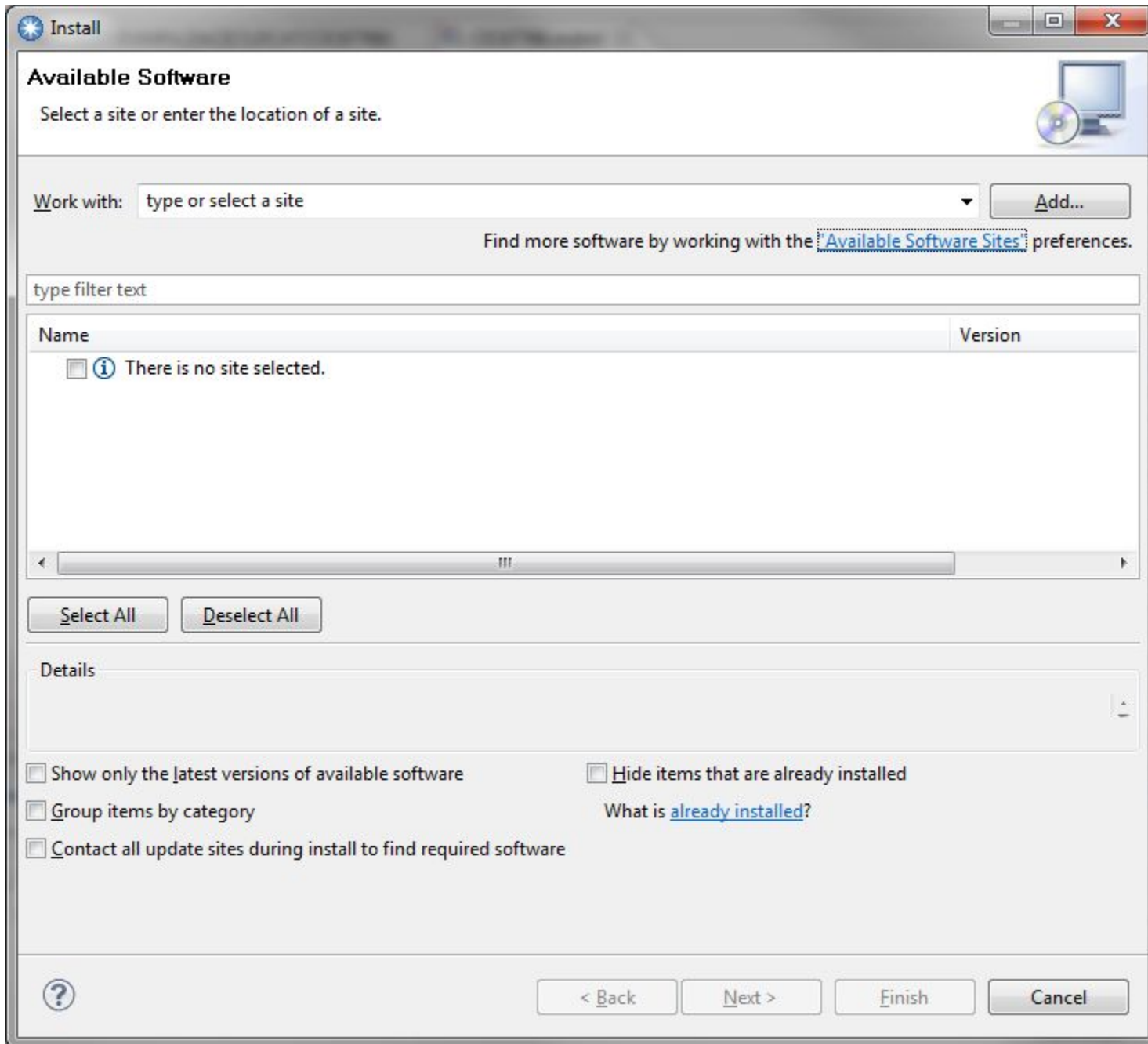
- It may be downloaded from MVS to your PC in BINARY mode from data set IDI.SIDIDOC2(IDIGUIP). The downloaded file is called IDIGUIP.zip.
- From the [Problem Determination Tools Plug-ins website](#), the download file is called FA_plugin_V12100.zip file.

Installing IBM Fault Analyzer for Eclipse 12.1.0.1 into CICS Explorer

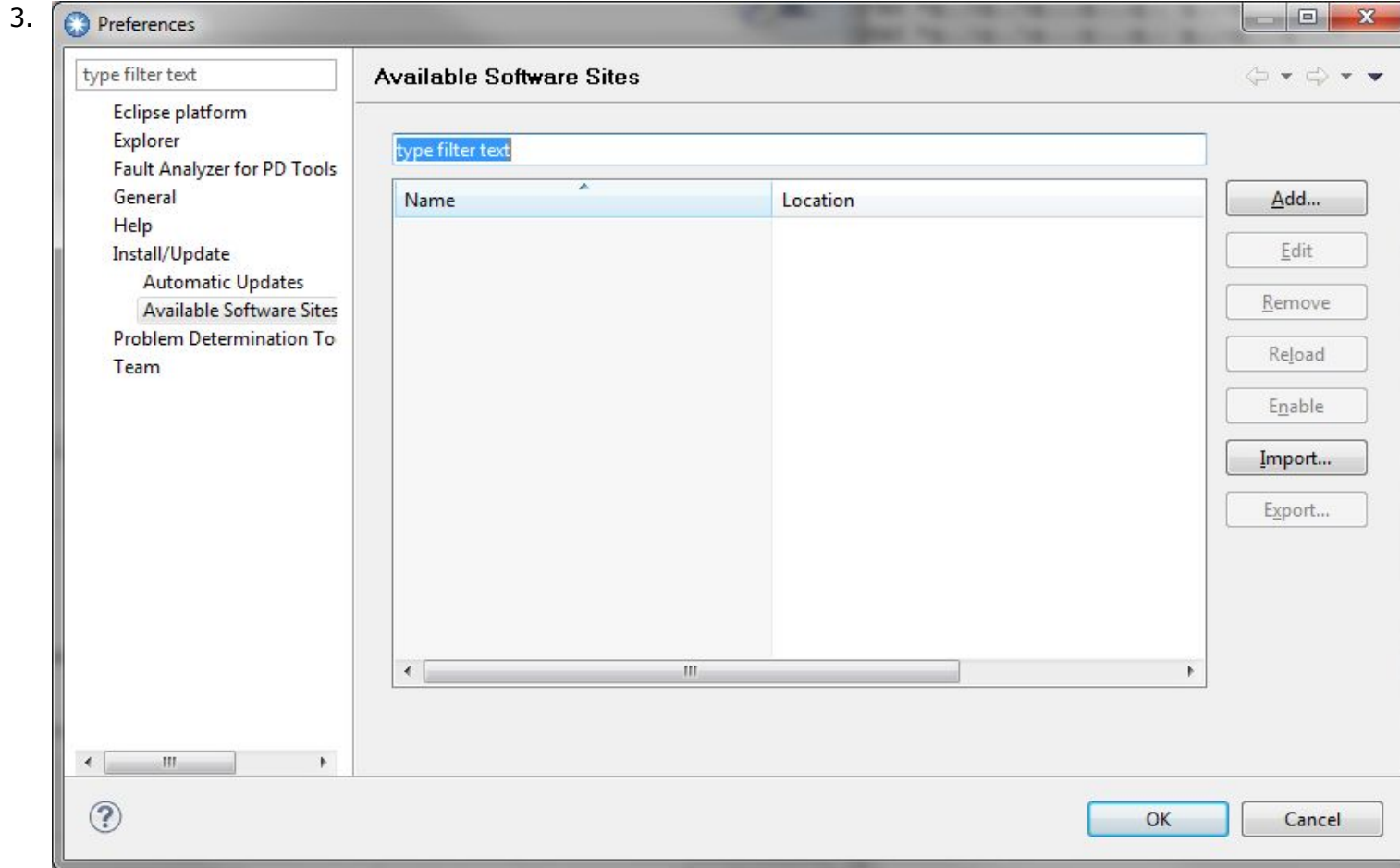


Go to **Help > Install New Software...**

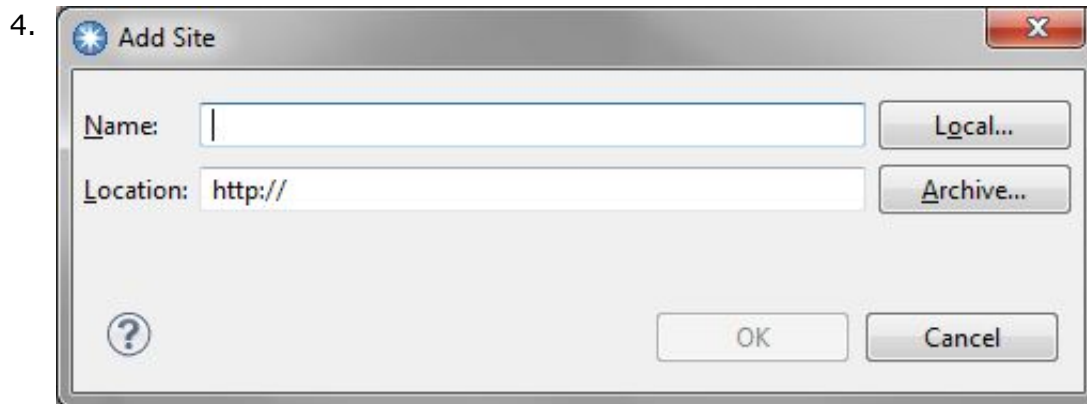
2.



Click on the "Available Software Sites" link at the top

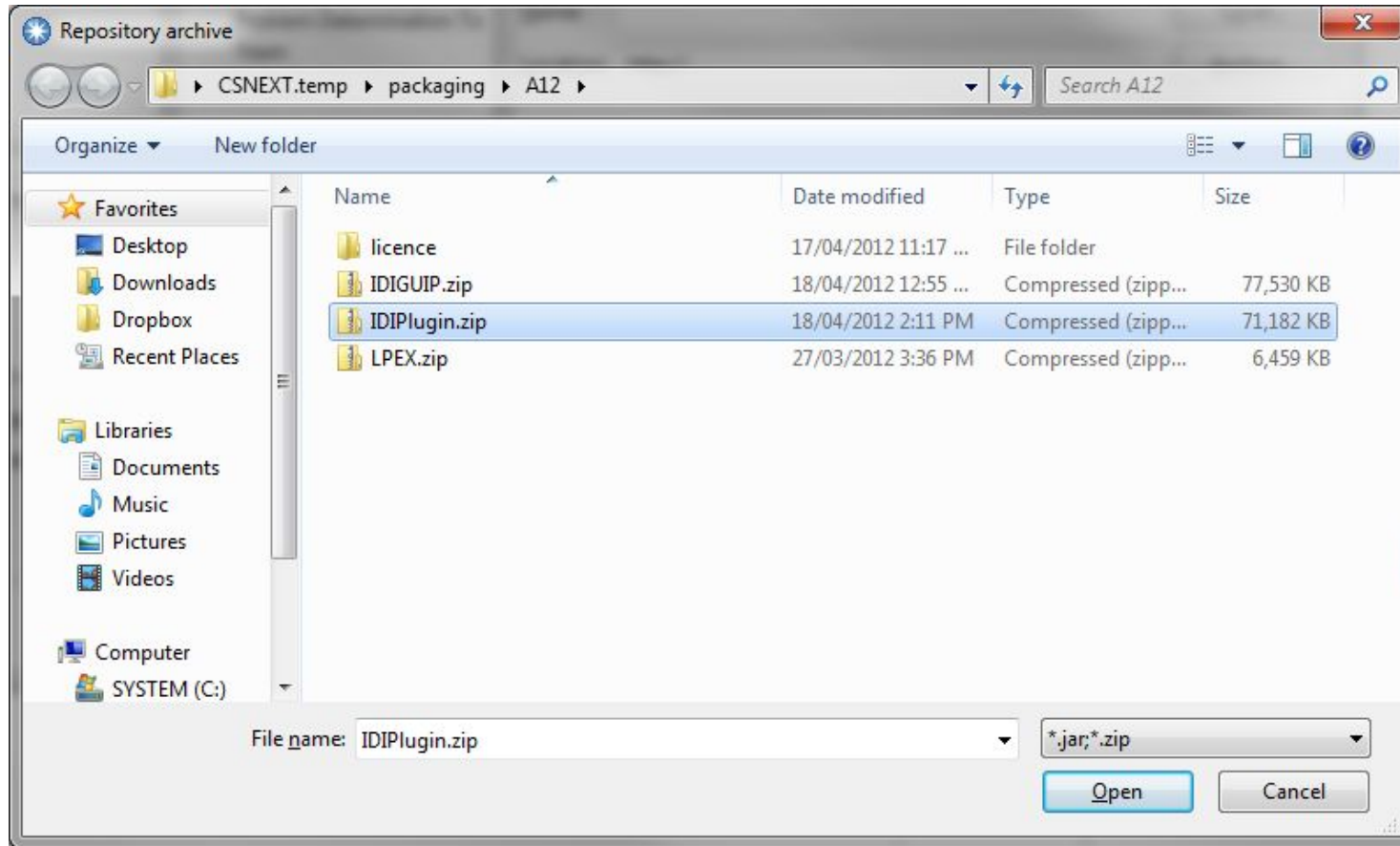


Click on "Add..."



Click on "Archive..."

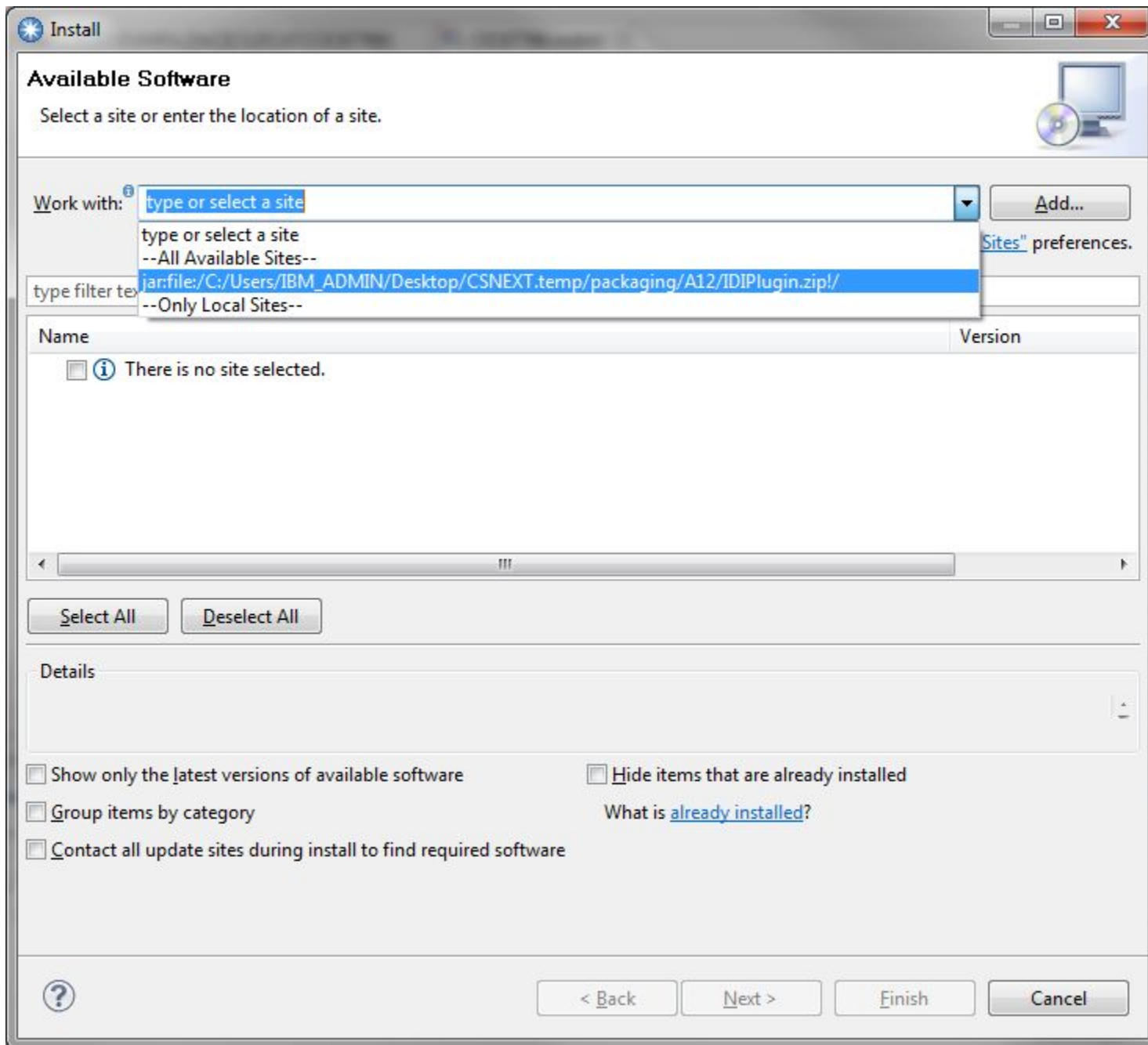
5.



Go to the folder where the plugin was downloaded and unzipped. Select "IDIPlugin.zip" to install the IBM Fault Analyzer for Eclipse 12.1.0.1. The LPEX editor is no longer packaged in "IDIPlugin.zip" to prevent future conflict with the Debug Tool plug-in. If the Debug Tool plug-in is installed, there is no need to install the LPEX editor. If Debug Tool will not be installed and the LPEX editor is desired, repeat these instructions and select the "LPEX.zip".

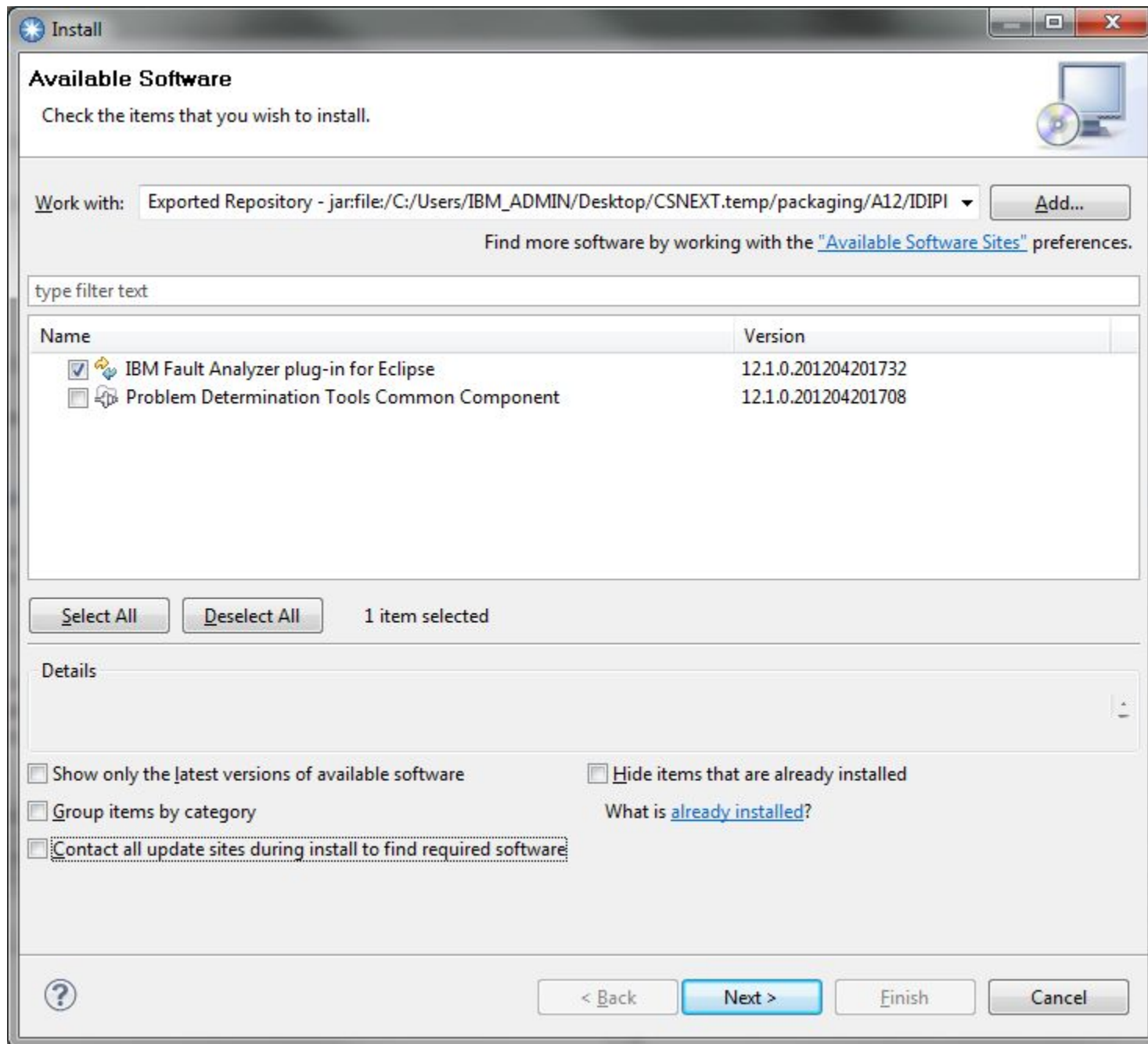
Click the "Open" and "OK" buttons to get back to the "Available Software" dialog.

6.



Select the previously chosen archive file from the "Work with" drop down box

7.



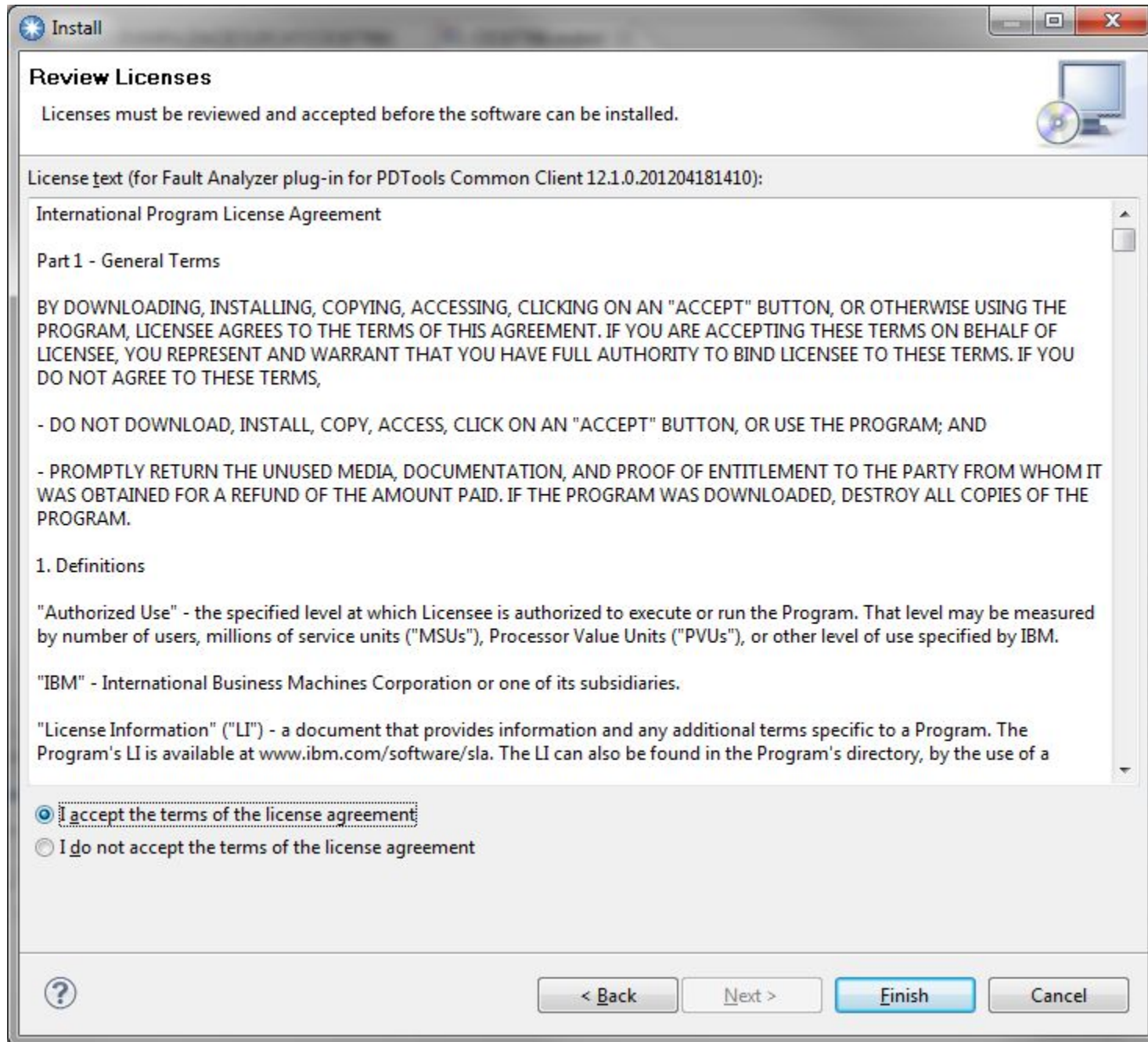
If nothing appears in the list box in the middle, uncheck the check boxes at the bottom of the dialog.

Select IBM Fault Analyzer for Eclipse. There is no need to select the Problem Determination Tools

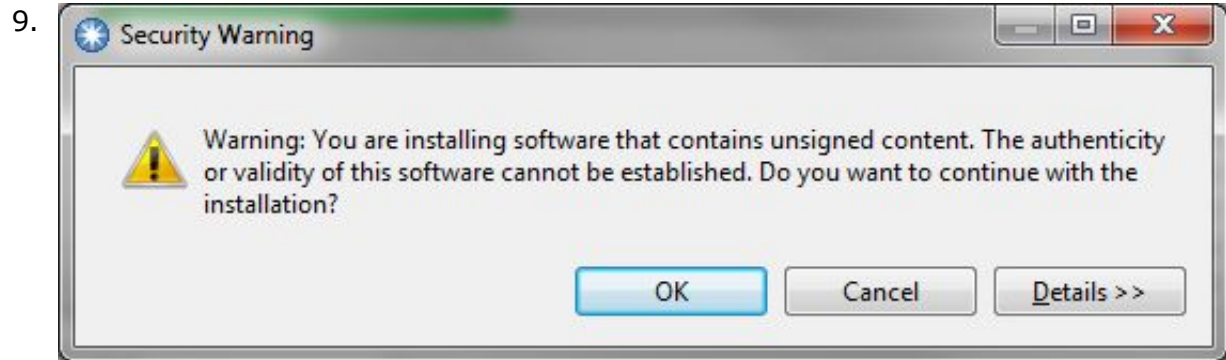
Common Component plugin. Eclipse will either install it automatically, or use an installed one previously installed via other PD Tools plug-ins.

Select "Next" and "Finish" in the next dialogs.

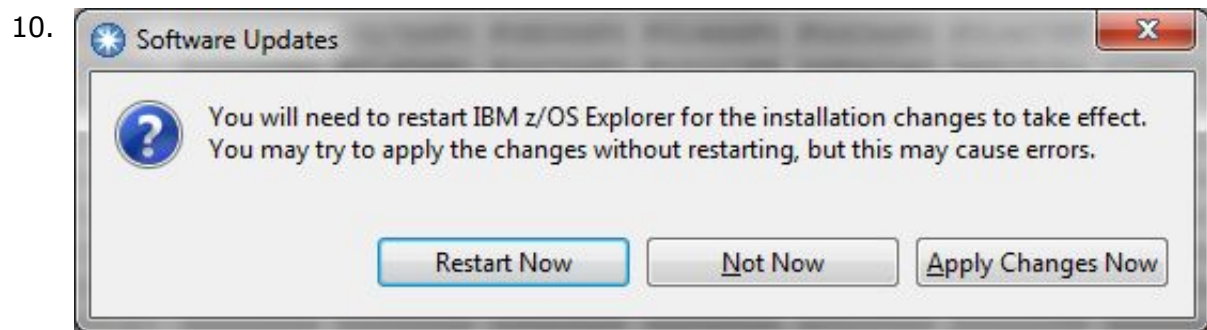
8.



Click "Finish"

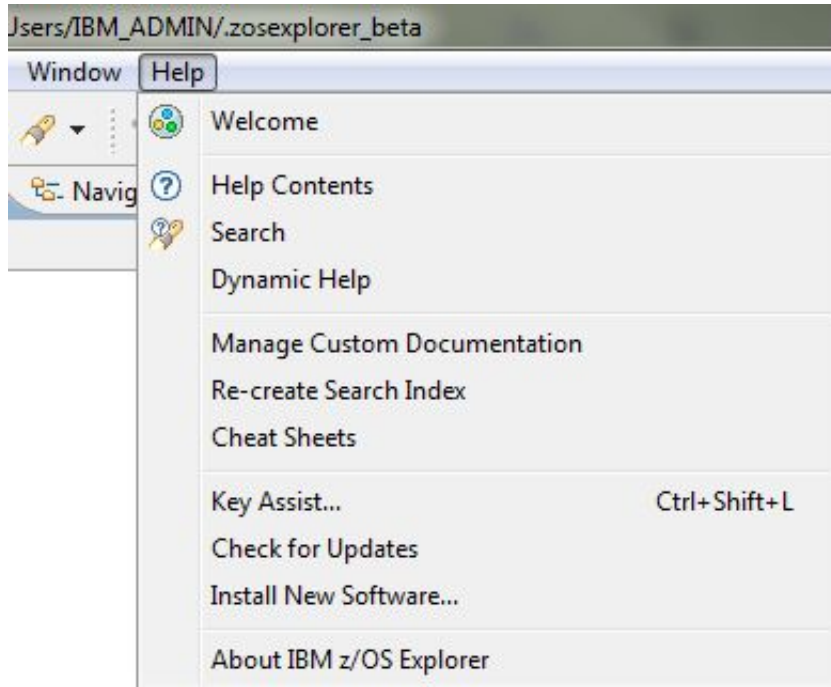


Click "OK"



Restart Eclipse to complete the installation or upgrade

Getting started using IBM Fault Analyzer for Eclipse 12.1.0.1



You can find more information on how to use IBM Fault Analyzer for Eclipse 12.1.0.1 in the help of CICS Explorer. Click **Help > Help Contents**. Expand the topic "Fault Analyzer for Eclipse".

Technical support

This plug-in is available at no charge to all licensed users of IBM Fault Analyzer for z/OS V12, or later. It is supplied under the standard terms and conditions of the IBM International Program License Agreement (IPLA) and of the associated License Information and other documentation, and provides a defect correction entitlement for those licensed users entitled to service for IBM Fault Analyzer for z/OS V12, or later. Service is available for this plug-in for as long as the IBM Fault Analyzer for z/OS product with which the plug-in is to be used is generally supported by IBM. In addition, IBM reserves the right to discontinue service on this plug-in when it is withdrawn from marketing by IBM. Please reference "IBM Fault Analyzer for z/OS" as the entitled product when contacting IBM and requesting support for this plug-in.