



# IBM CICS Deployment Assistant



The New Face of CICS  
Discover, Model, Visualize, Automate, Deploy

IBM® CICS® Deployment Assistant for z/OS® (CICS DA) helps you use the latest IBM CICS technology faster and easier than ever before. With CICS DA you can discover, model, visualize, and deploy new and existing CICS regions, using automation and policy-driven advice built on your own and IBM's knowledge and experience.

CICS DA consists of host components and a new, tightly-integrated plug-in for the CICS Explorer™, which all work together to give the systems programmer a powerful toolkit to manage CICS deployment.

Using CICS DA you can discover and create an offline model of CICSplexes and CICS regions together with their startup options, connectivity relationships, and major subsystem dependencies.

Discovered regions in the offline model can be used to visualize the CICS environment more effectively. Offline models can be shared with other users.

Visualizations of the model (see Figure 1) provide a powerful and intuitive way to understand and manage system topology and startup options.

CICS DA can clone existing CICS regions by creating and submitting the necessary JCL, startup options, datasets, and resource definitions.

## Key tasks

Key deployment tasks supported by CICS DA include:

- Discover CICS regions and dependencies
- Check CICS topology and initialization options are as expected
- Work with JCL, spool files, and datasets
- Add a CICS region to an existing CICSplex
- Clone an existing CICS region
- Start and stop a CICS region

Eclipse cheat sheets, embedding best practices, are also included to assist with CICS version to version upgrades and CICSplex® SM implementation.

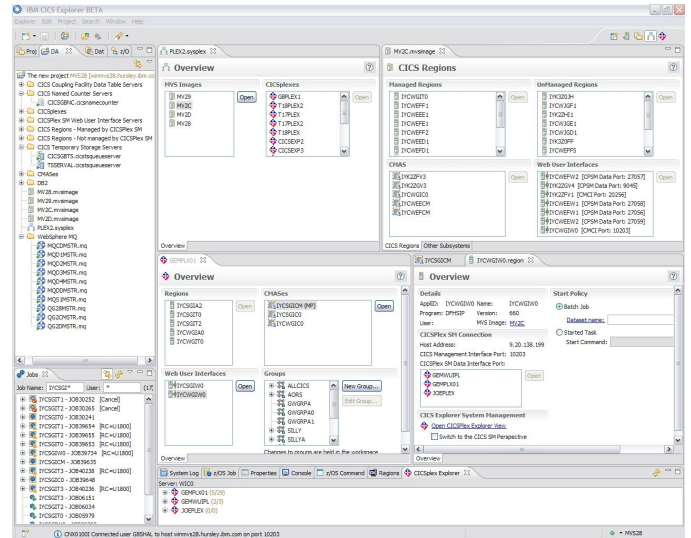


Figure 1 CICS Deployment Assistant visualization

## Benefits

CICS DA provides important benefits to the enterprise. By simplifying and automating complex tasks, it improves productivity and reduces costs, risks, and dependency on specialized CICS skills. By promoting standardization and reducing complexity it helps to accelerate the deployment of new CICS capabilities and line-of-business applications, while minimizing errors and the associated risk of failure.

CICS DA can remove or automate many of the complex, multistep processes required to perform activities such as cloning an existing CICS region, and significantly reduce the time required to validate CICS topology and initialization options during setup or problem determination.

CICS DA is based on IBM CICS Explorer, which has already shown that it can increase the productivity of highly skilled CICS technical users, as well as providing an intuitive entry-point for broadly skilled staff, by integrating powerful tools into a single Eclipse-based user interface.

## CICS Explorer enhancements

A new version of CICS Explorer, V1.0.1, available concurrently with CICS DA, provides an intuitive and secure way to view and edit z/OS datasets and zFS files, submit JCL, and view output and job logs directly, which will be of great benefit to all CICS customers, not only those using CICS DA (see Figure 2).

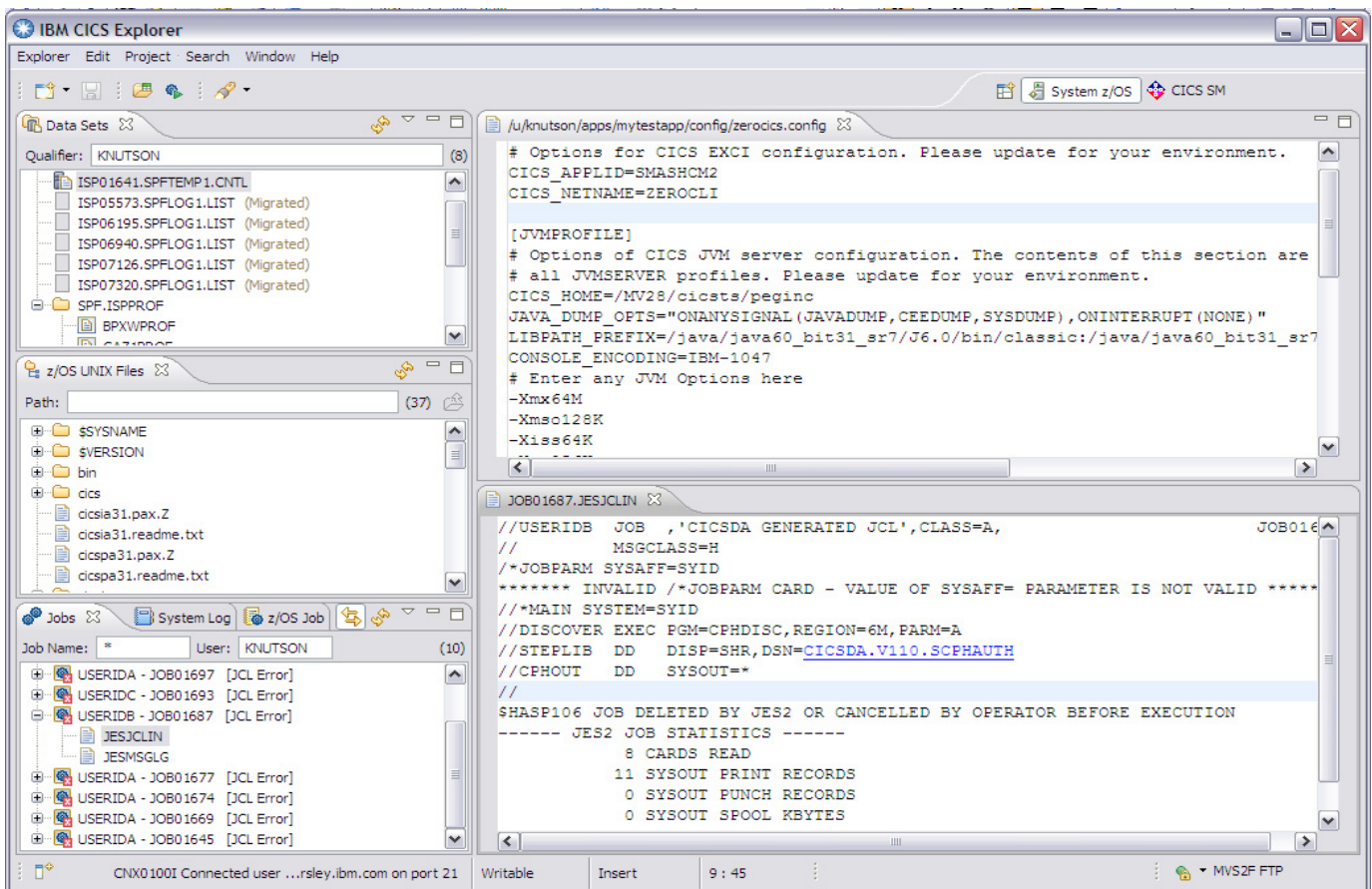


Figure 2 z/OS perspective

## Available now!

Announced July 22<sup>nd</sup> 2010, CICS DA V1.1 became generally available September 24<sup>th</sup> 2010, with support CICS Transaction Server for z/OS (CICS TS) V3 and V4. For more details, refer to Software Announcement 210-221

## IBM System z tools

IBM System z<sup>®</sup> tools including Problem Determination Tools, CICS Tools, CICS Transaction Gateway, and Application Development Tools support the entire enterprise-application life cycle to help you build, integrate, test, and manage enterprise solutions for CICS, so you can make the most of your System z platform investments and expedite your move to SOA.

Many of these tools now support and integrate with the CICS Explorer, giving architects, developers, system programmers, and administrators a common tooling environment, with integrated access to a wide range of data and control capabilities.

## GI13-0557-02



## Software requirements

### Required licensed programs

- CICS Transaction Server for z/OS V3.1 or V3.2 (5655-M15), or V4.1 or v4.2 (5655-S97)
- IBM z/OS, as supported by version of CICS TS
- IBM CICS Explorer V1.0.1, or V1.1 for CICS TS V4.2

### More information

CICS Deployment Assistant home page

<http://ibm.com/cics/deployment>

CICS Explorer home page

<http://ibm.com/cics/explorer>

CICS Explorer forum

<http://tinyurl.com/68bndw>

To learn more about CICS and IBM's tooling solutions, contact your IBM representative or IBM Business Partner, or visit the following Web sites:

CICS Transaction Server: <http://ibm.com/cics>

CICS Tools: <http://ibm.com/cics/tools>

CICS Transaction Gateway:

<http://ibm.com/software/http/cics/ctg/>

PD Tools: <http://ibm.com/software/pdtools>

Rational<sup>®</sup>: <http://ibm.com/software/rational>