



IBM Lotusphere Paris 2009

Jeudi 26 mars, IBM Forum

Présent et Futur (proche) de Notes & Domino

*Gilles Lacombe,
IT Specialist Lotus*

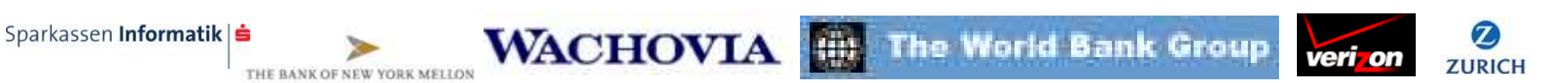
| | | | | |
|------------|-------|-------------|--------|---|
| Activities | Blogs | Communities | Dogear | ▼ |
| Profile | Files | | | |



Gilles Lacombe
IT Specialist - Lotus
IBM employee, Regular
COURBEVOIE, France
Bâtiment : DCT | Etage : 24 |
33-1-4905-8166
gilles.lacombe@fr.ibm.com

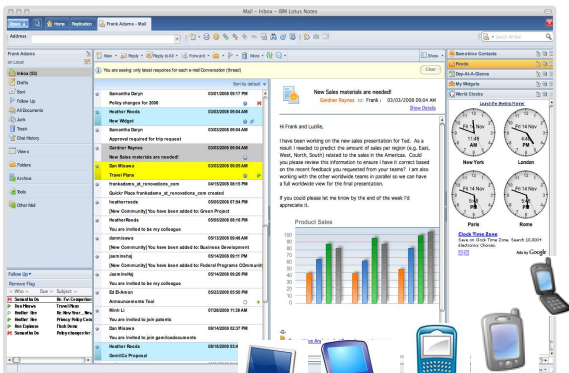
Sametime: I am available @ DCT 24A

Send Mail | Chat | More Actions



IBM Lotus Notes et Domino 8.5 : Introduction

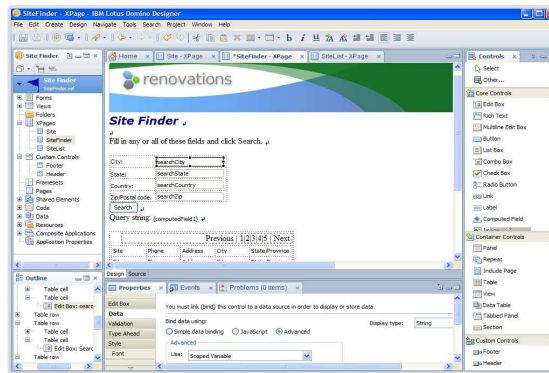
« Social, Efficient and Green. Smart Collaboration is Here. »



**Espace de travail
collaboratif
révolutionnaire**



Utilisateurs



**Développement
d'applications Web 2.0
collaboratives**



Développeurs

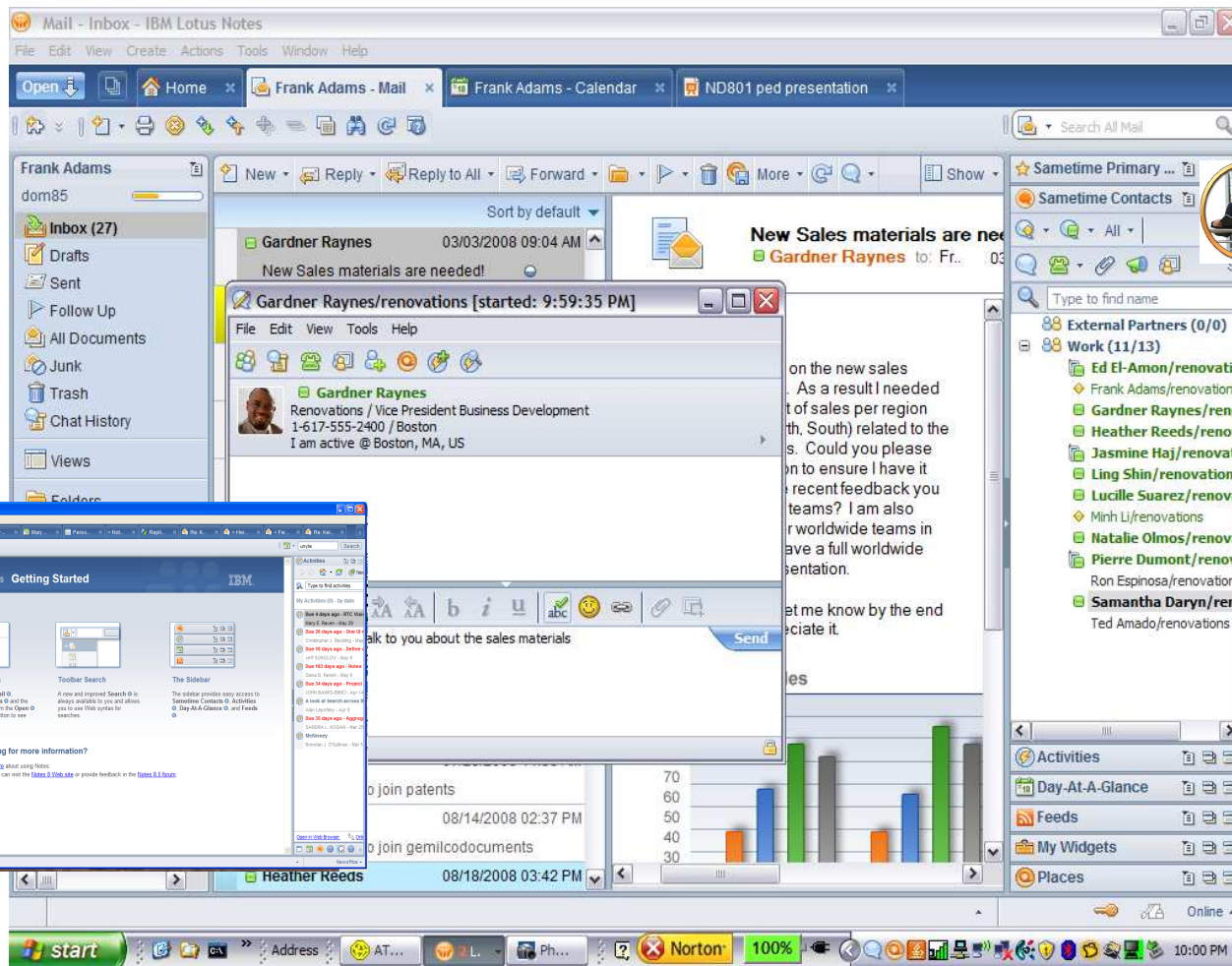


**Serveur robuste &
fiable**



Administrateurs

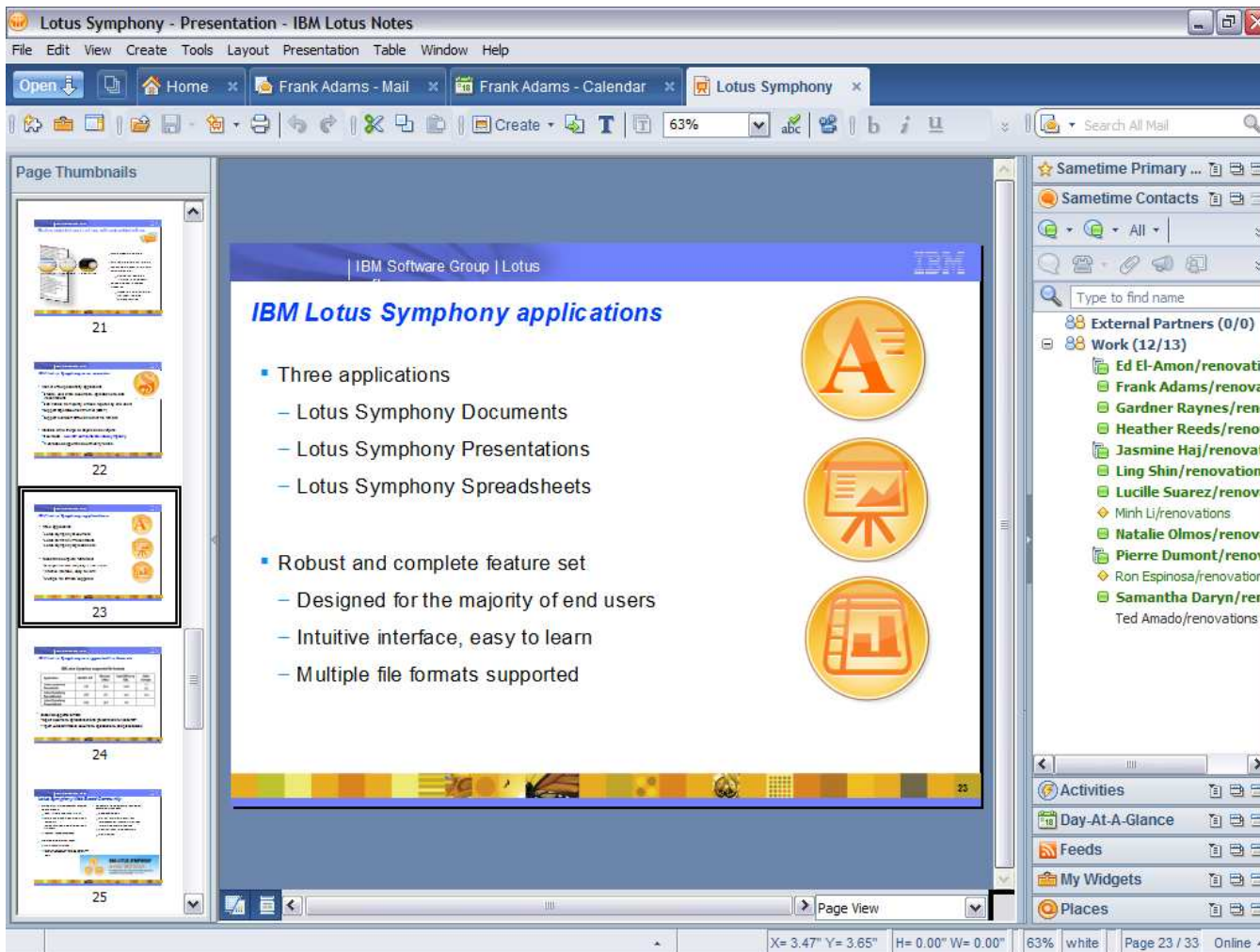
Lotus Notes : la collaboration simplifiée



- Messagerie
- Agenda(s)
- Contacts
- Messagerie Instantanée
- Documents
- Activités
- Alertes (Flux RSS)
- Applications Métiers
- Widgets
- Recherche
- ...

Un espace unique regroupant l'ensemble de vos besoins collaboratifs.

Créer, Editer, Partager vos documents



Téléchargement
Gratuit !
Symphony.lotus.com

ODF :
IBM, OpenOffice.org 2.0,
StarOffice, KOffice,
TextMaker, AjaxWrite,

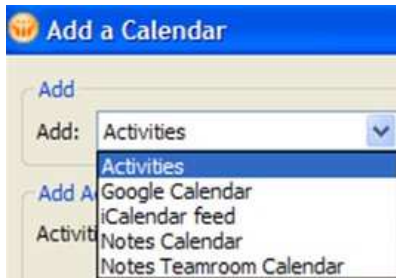
MS Office
97 / 2000 / XP,
Office 2003
MS Rich Text

Export PDF

IBM Lotus Symphony inclus dans Lotus Notes sans coût additionnel

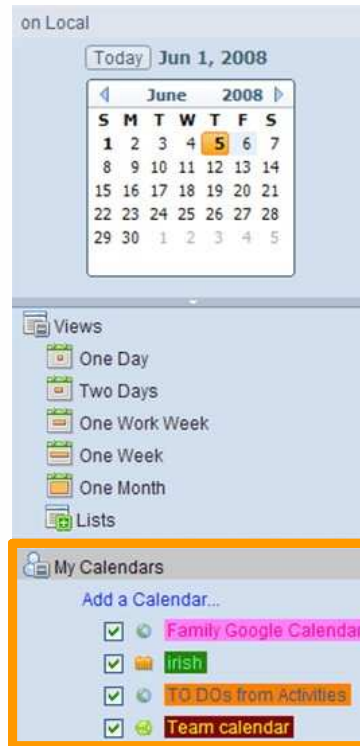
Agendas multiples

Ajout



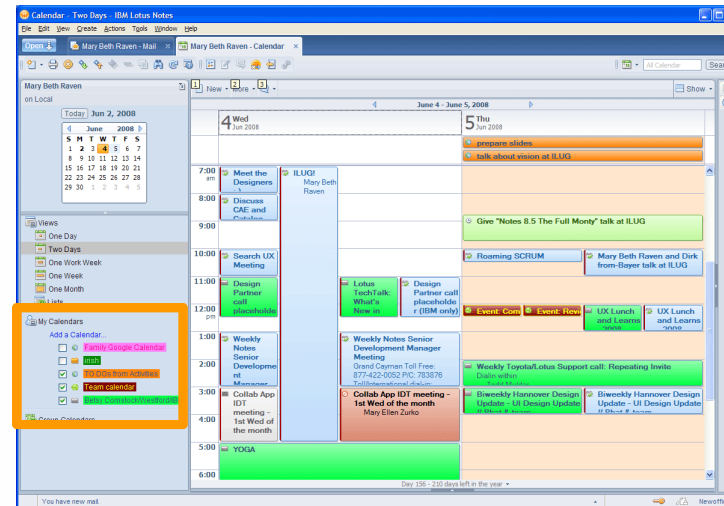
Sélection

Contacts équipe, événements...



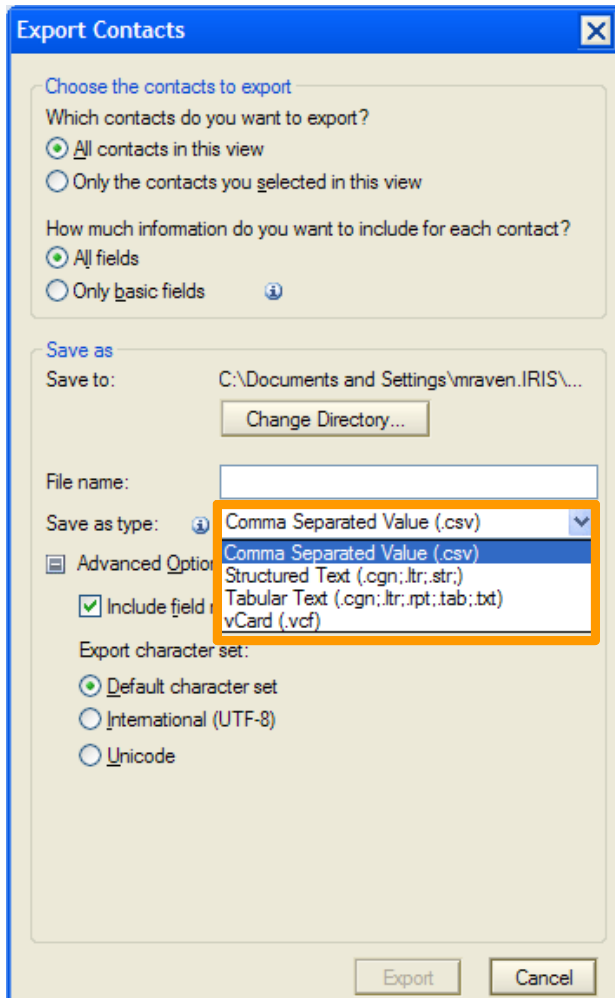
Accès

Agendas professionnels et personnels



- Conservation des entrées d'agenda en mode itinérant ou pour la synchronisation (ex: Blackberry)
- Entrées d'agenda Google, agenda utilisateurs Notes, ou iCal®.
- Mises à jour automatiques à chaque ouverture.

Gestion facile des contacts



Export Contacts

Choose the contacts to export

Which contacts do you want to export?

All contacts in this view

Only the contacts you selected in this view

How much information do you want to include for each contact?

All fields

Only basic fields

Save as

Save to: C:\Documents and Settings\mraven.IRIS\...

Change Directory...

File name:

Save as type: Comma Separated Value (.csv)

Advanced Options

Include fields

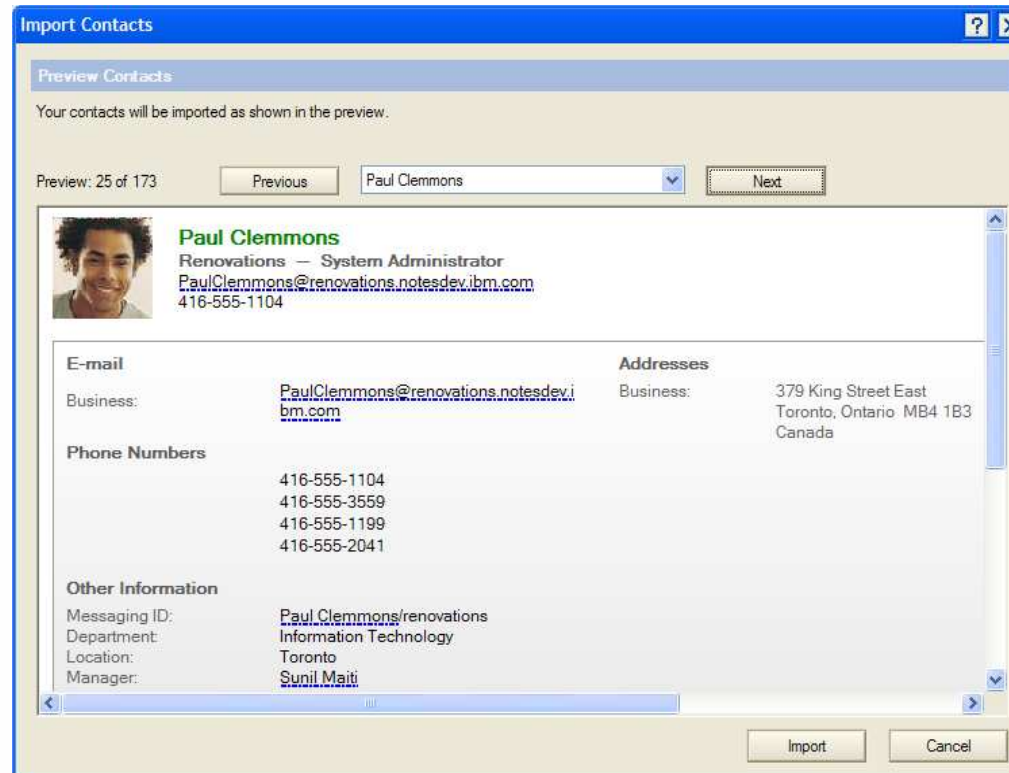
Export character set:

Default character set

International (UTF-8)

Unicode

Export Cancel



Import Contacts

Preview Contacts

Your contacts will be imported as shown in the preview.

Preview: 25 of 173

Previous Paul Clemmons Next

Paul Clemmons
Renovations – System Administrator
PaulClemmons@renovations.notesdev.ibm.com
416-555-1104

| E-mail | Addresses |
|---|--|
| Business: PaulClemmons@renovations.notesdev.ibm.com | Business: 379 King Street East Toronto, Ontario MB4 1B3 Canada |

Phone Numbers

416-555-1104
416-555-3559
416-555-1199
416-555-2041

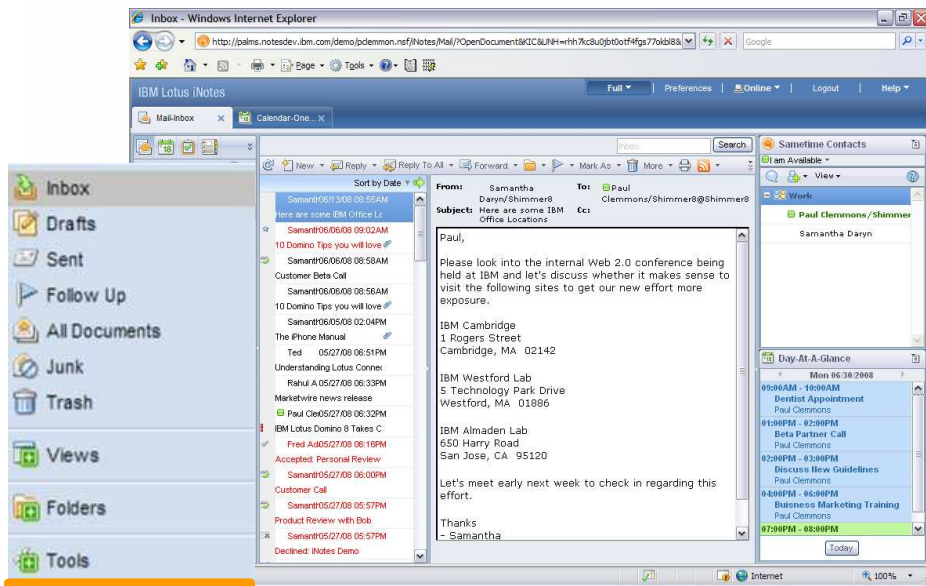
Other Information

Messaging ID: Paul.Clemmons/renovations
Department: Information Technology
Location: Toronto
Manager: Sunil Maiti

Import Cancel

Export/Import contacts en vCard
Envoi contacts en vCard directement

Le client Web



Vos widgets



Accès multi-postes ou en mode kiosk.

- Utilisation très facile
- Depuis n'importe quel ordinateur
- Faible coût de déploiement
- Version allégée dite 'Lite' pour un accès ultra-rapide
- Interface analogue au client Lotus Notes

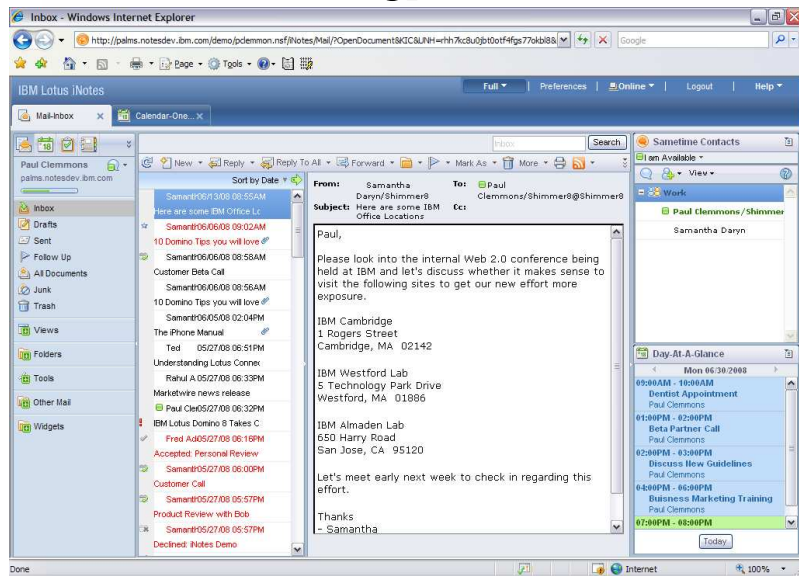
IBM Lotus iNotes* vous fera aimer le web.

* Nouveau nom de Domino Web Access

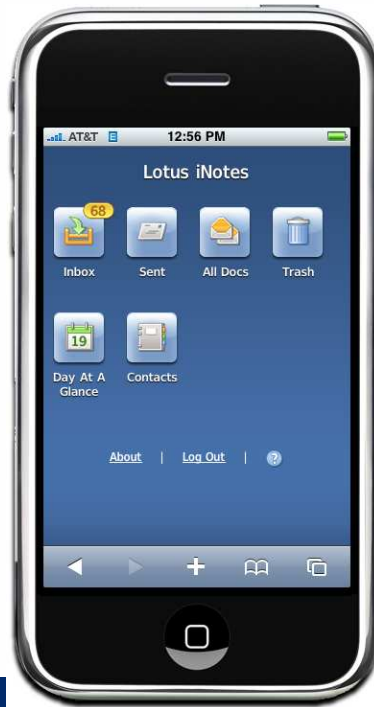
IBM Lotus iNotes 8.5

- Retour à iNotes
- Interface “de type” Notes 8
- Un seul template Notes, 3 modes d'utilisation

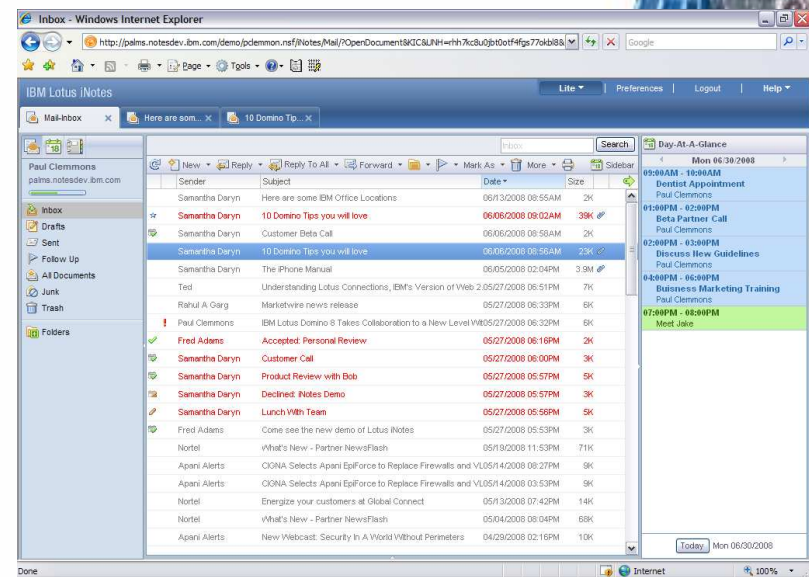
Full



Ultralite

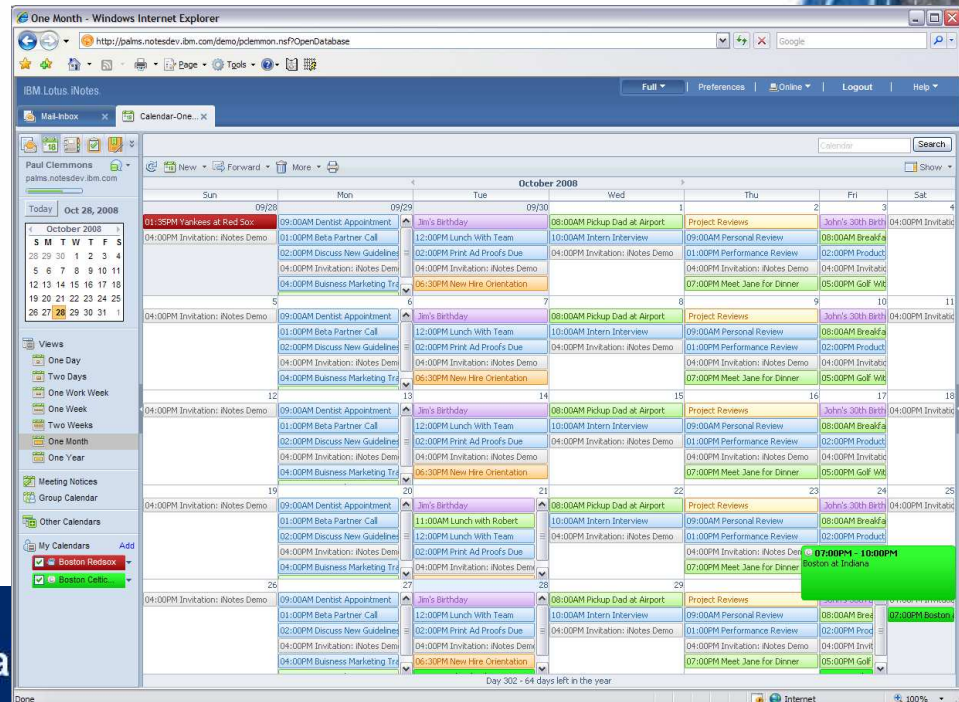
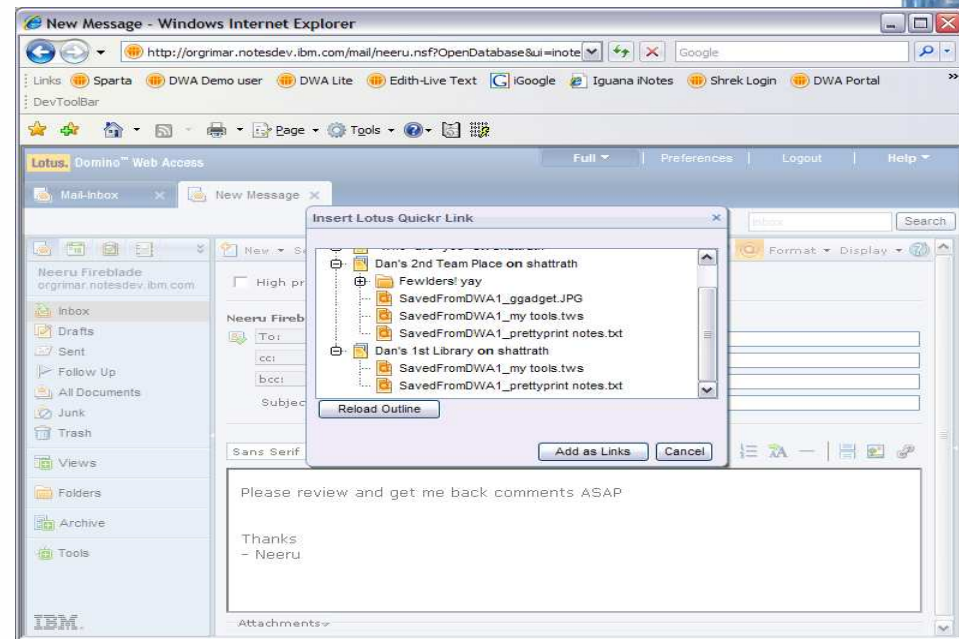


Lite



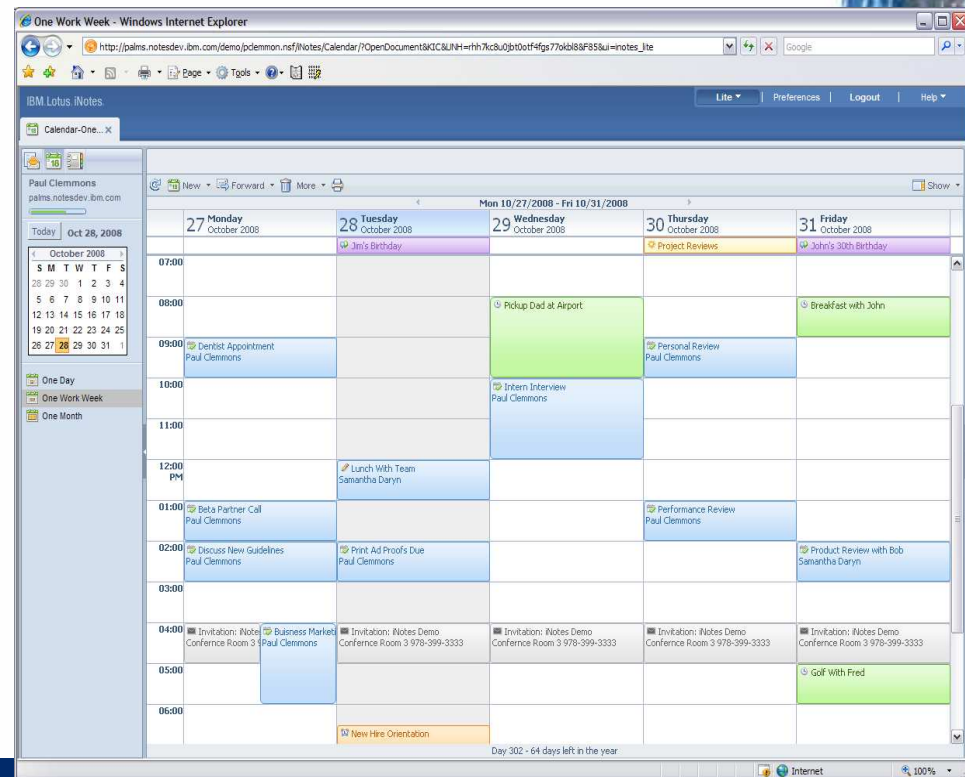
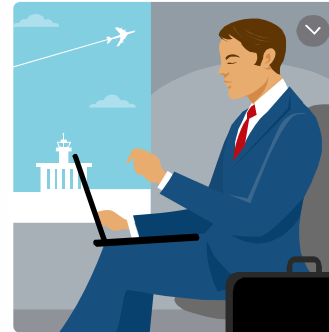
IBM Lotus iNotes 8.5 Full mode

- Interface de type Notes 8 depuis 8.01
 - ▶ Navigation, onglets, barre d'état, etc.
- Barre latérale : Dojo (Day At A Glance, IBM Lotus Sametime® Contact List, Help)
- Opérations en arrière-plan
- Affichage MIME
- Intégration Quickr
- Agendas fédérés



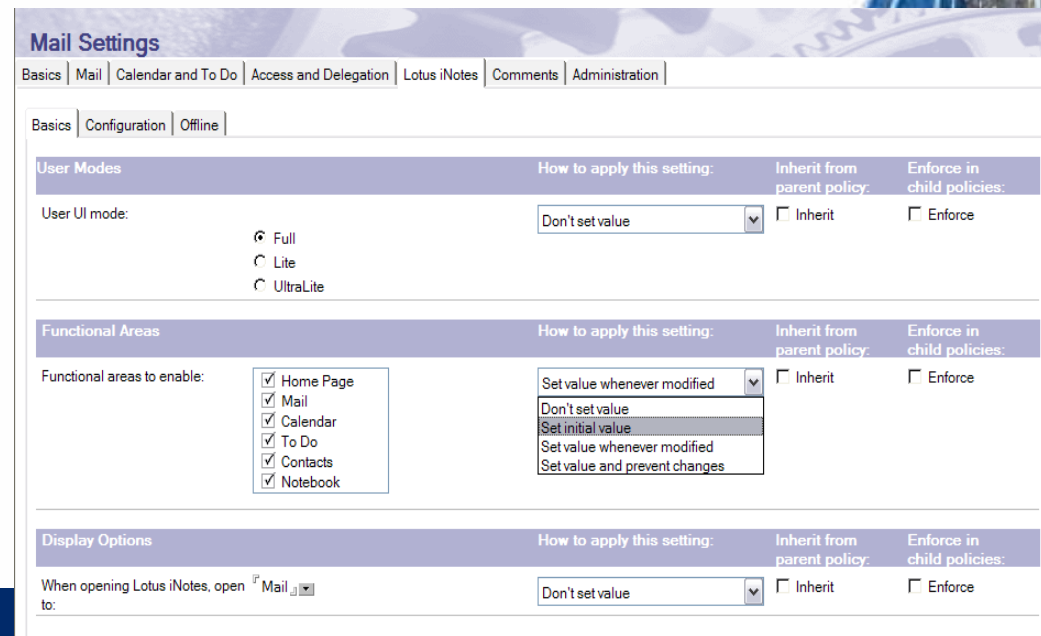
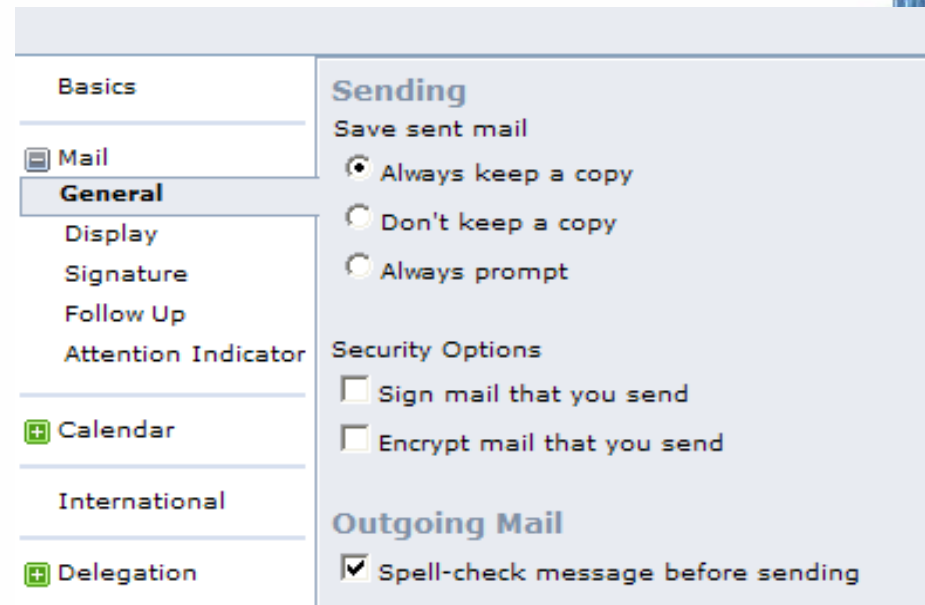
IBM Lotus iNotes 8.5 Lite mode

- Apparu en 8.0.1
- Pour les connexions lentes
- Chargement rapide
- Centré sur mail/agenda/contacts
- Utilisation
 - ▶ Utilisateurs itinérants
 - ▶ Kiosques
 - ▶ Connexions satellites
- Nouveautés
 - ▶ Agenda
 - ▶ Indicateur de quota
 - ▶ Préférences, Out of Office
 - ▶ Bascule Full/Lite



IBM Lotus iNotes 8.5 Full & Lite

- Vues agendas refaites
- Nouvel indicateur de quota
- Contrôle orthographique à l'envoi
- Support Safari 3.1 (Mac OS 10.5)
- Nouveau fichier de ressources pour les langues
- Politiques Lotus Domino®
 - ▶ Défauts Préférences & paramétrages mail, desktop, & iNotes
 - ▶ Déploiement contrôlé des fonctions



IBM Lotus iNotes ultralite

- Accès direct pour le mail/agenda/contact depuis iPhone/iTouch
- Interface cohérente
 - ▶ Avec Notes
 - ▶ Avec l'interface iPhone
- Vue rapide et précise “Day-At-A-Glance”
- Uniquement disponible avec la 8.5 :
 - ▶ Résolution des noms
 - ▶ Lecture mail chiffrés
 - ▶ Recours à HTML seul pour Firefox
 - ▶ Accessible (avec Firefox/Win32)
- Licence incluse dans Lotus Notes ou Lotus iNotes



Diversité de plates-formes

NOUVEAU



X
Mac OS X



redhat



suse



ubuntu
Make the best between people

Nouveau





Microsoft
Windows xp





Windows Vista



Périphériques divers



IBM Lotus Notes Traveler
Maintenant disponible sous Symbian !
(Nokia S60 - Samsung)



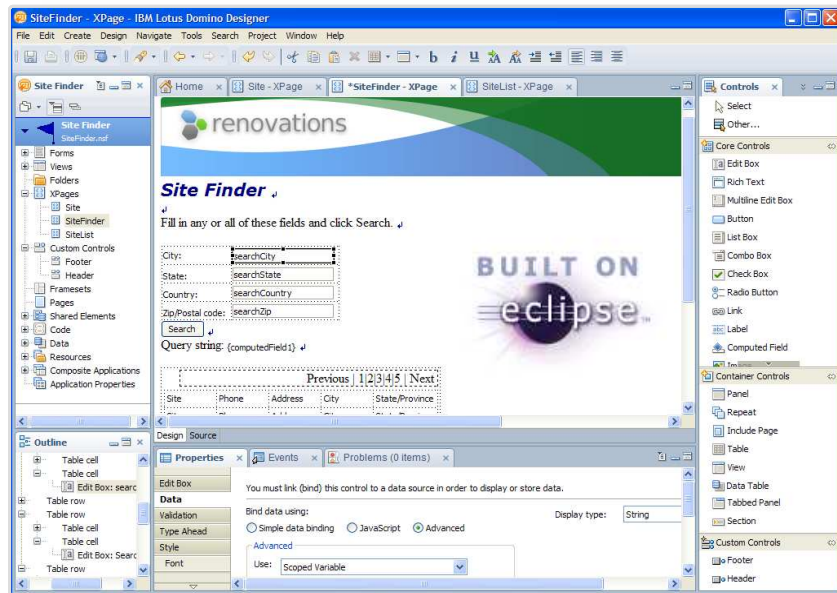
IBM Lotus iNotes Ultralite
Apple iPhone



Blackberry



Un client de développement ultra-complet sous Eclipse



- ✓ Système RAD
- ✓ Nouvelle interface
- ✓ Pour étendre vos compétences actuelles



- Pour construire des applications web attrayantes et modernes
- Intégrant des modèles pour partir sur de nouveaux besoins ou pour les applications existantes
- Un environnement de développement d'applications extensible
 - Palette d'outils
 - Rapports et outils de tests
- Développements web simplifiés
 - Nouvel élément de design : XPages
 - Contrôles personnalisables
 - Bibliothèques Javascript (coté serveur)
 - Editeurs CSS / HTML
 - Rendu HTML amélioré
 - Support AJAX (Toolkit Dojo)

Introduction à XPages



Developers

Applications SiteFinderDemo.nsf Site Finder Demo C:\Pete\AppData\Tutoria

Forms Views Folders XPages Site1 SiteFinal SiteFinderFinal SiteList1 SiteListFinal Custom Controls Framesets Pages Shared Elements Code Data Resources Composite Applications Application Properties

Tool Rentals toolmgr.nsf

Outline View: viewPanel xp:this.data View column View column

Design Source

Properties Events Problems (0 items)

Data Domino View: SiteList View Column: Phone Display type: Number



Lotus Web 2.0 powered by Domino XPages

- **Construction visuelle de pages Web**
 - Contrôles U/I avancés
 - Développement par *drag & drop*
- **Développement instantané**
 - Markup XML avec la source
 - Contrôle HTML complet
 - Présentation en CSS
 - Logique métier utilisant JavaScript
 - XPages Data Sources – XML, Rest, SOAP, Relational
- **Pour étendre vos applications NSF existantes**
 - Agents Web
 - Formules
 - Sécurité

Interface Web 2.0

The screenshot shows a web browser window displaying a Lotus Domino Web 2.0 interface. The browser's address bar shows 'Discussion 2.0'. The page features a blue header with the IBM logo, a search bar, and a 'Welcome Anonymous | Logout' link. A sidebar on the left contains a menu with 'All Documents', 'By Most Recent', 'By Author', 'By Category', and 'My Documents'. The main content area is titled 'All Documents' and includes a 'New Main Topic' button. Below this, there are several document entries with titles like 'How to verify a signed JAR file using JARSIGNER' and 'How to manually create keys and a self-signed certificate using KEYTOOL'. The footer of the page includes the Lotus logo and the text 'Web 2.0 powered by Domino XPages'. The browser's status bar at the bottom shows 'Internet' and '100%' zoom.

Logo personnalisable

Thèmes CSS

Interface améliorée

XPages

- Interface moderne
- Facile à personnaliser
- Facile à déployer

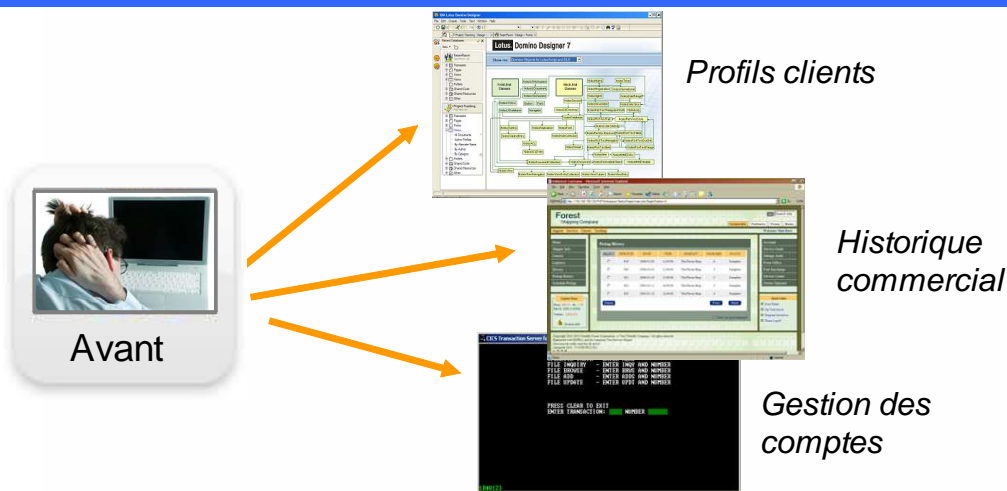
Navigation simplifiée

Insertion de Copyright

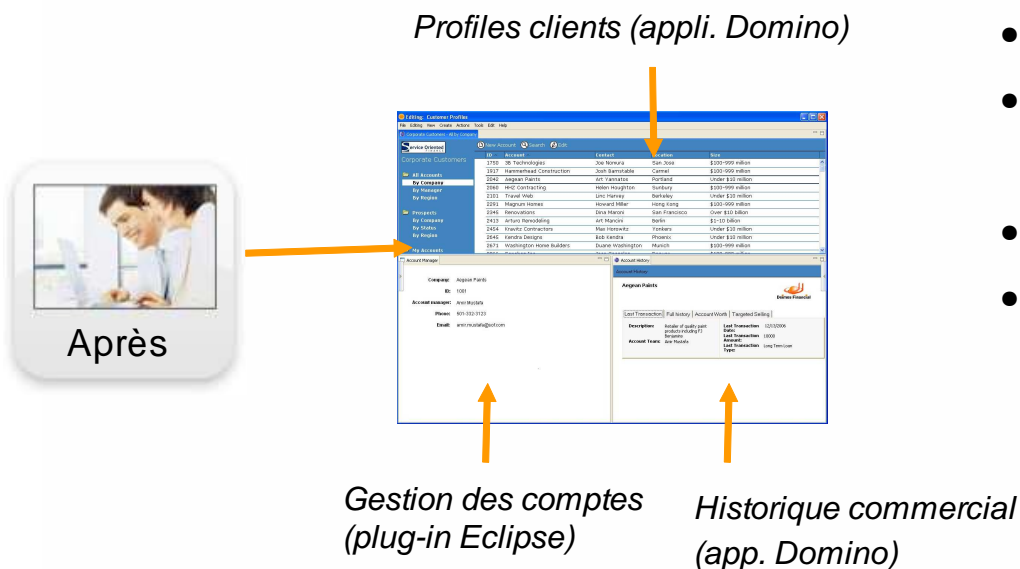
"XPages technology drastically reduces the time it takes us to develop Domino applications. We no longer need to spend time developing client side Javascript/Ajax code since many of things we built in this manner are now core features of XPages. Additionally, the ability to more easily leverage standard techniques like CSS makes building a compelling user experience much easier. Bruce Elgort, Eljugi software llc

© Copyright IBM Corporation 2007, 2008. All Rights Reserved

Les applications composites



- Applications séparées
- Interfaces différentes
- Gestion manuelle des copier-coller
- Intégration faible



- Point d'entrée unique
- Les données sont liées entre les différentes applications
- Limite les silos d'informations
- Réutilisation de votre existant

Intégration SAP avec Alloy : scénarios

Rapports

Demande d'absences depuis l'agenda Notes

Demande de déplacements, soumission, état, & approbation

The screenshot displays the IBM Lotus Notes interface with three overlapping windows:

- New Trip Request for Gerhard Keller - IBM Lotus Notes:** Shows a form for a "Trip Request" with "Type: Billable to Customer".
- New Leave Request for Gerhard Keller - IBM Lotus Notes:** Shows a form for a "Leave Request" with "Type: Paid Absence". The "When" section includes "Starts: 01/23/2009" and "Ends: 01/23/2009". The "Why" section contains the text "need some time off for a family's visit".
- Report Catalog - IBM Lotus Notes:** Shows a list of reports under "Travel Management Reports". The selected report is "General Trip Data/Trip Totals".

The "General Trip Data/Trip Totals" report details are shown below:

| | |
|--------------------|--|
| Report name: | General Trip Data/Trip Totals |
| Category: | Travel Management Reports |
| Short description: | General Trip Data/Trip Totals |
| Schedule: | Unscheduled |
| Delivery format: | Embedded in e-mail |
| Parameters: | LDBCBACT is equal to X; Optimize is equal to X; %UCT is equal to Only select personnel numbers valid today; WR is equal to Trips only. |

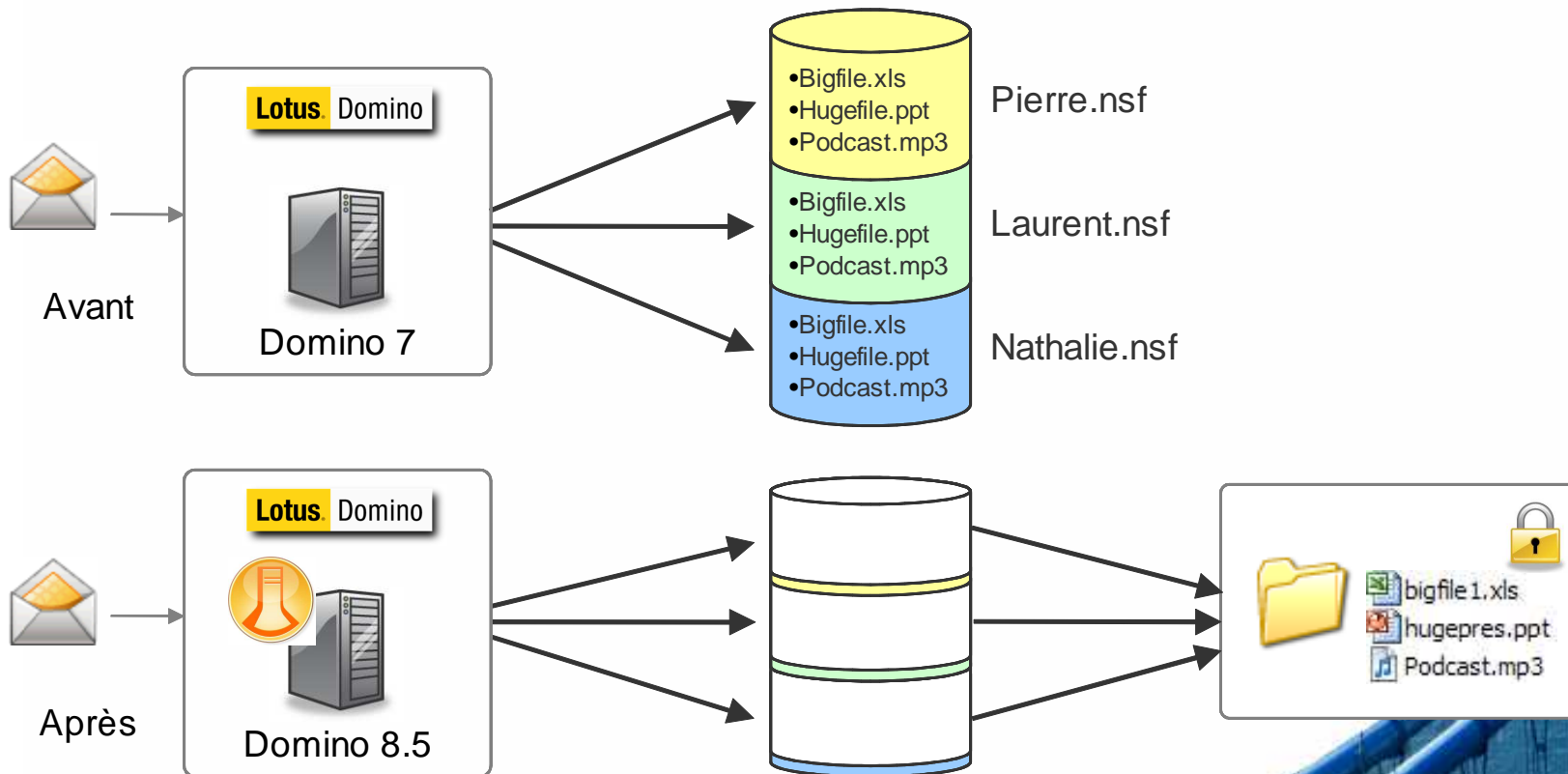


Gains de stockage (plus de 50 %)

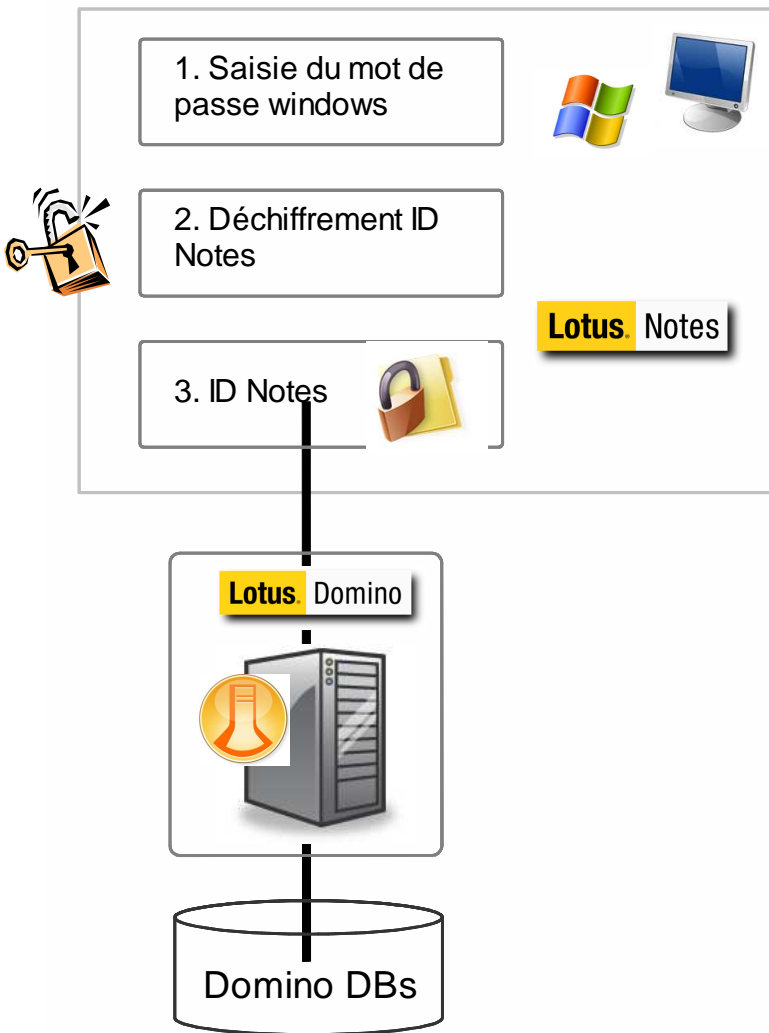
Domino Attachment and Object Storage (DAOS)

- Une seule instance de stockage des attachements présents dans plusieurs boîtes aux lettres ou applications.
- Stockés en tant que fichiers, permet le backup incrémental, pas de surveillance de la taille d'un gros fichier ou incident général en cas de problème. (Les fichiers sont chiffrés par le serveur)

Réduit l'espace disque, routage de mail optimisé, compactage et backup plus rapides des bases



Gestion des Ids : Shared Login & ID Vault



•Shared Login :

- Login Lotus Notes direct depuis l'authentification Windows®

•Id Vault :

- Permet aux utilisateurs de disposer de leur ID Notes même en cas de perte ou de dommage (avec les mêmes clefs de chiffrement)
- Simplifie la première diffusion des ID
- Reset possible du mot de passe
- Synchronisation ID multiples
- Utilisation multi postes

Aide à l'optimisation de la configuration : DCT

Collecte différentes sources (Notes.ini, document serveur, document de configuration, commandes sur console, statistiques) à travers les différents serveurs du domaine

>Présente des suggestions (mises à jour régulière sur le web)

Lotus Domino



Results For Server: **Ace/Iris**
Total Tests Run: 4

| Severity | Count | Percentage |
|----------------|-------|------------|
| Fatal | 0 | 0 % |
| Failure | 0 | 0 % |
| Warning (High) | 2 | 50 % |
| Warning (Low) | 2 | 50 % |
| Normal | 0 | 0 % |
| Exception | 0 | 0 % |

Note: Tests with exceptions may not have run to completion

Rule: Allowing 'RM_NO_LOG_OBJECTS_IN_MAILBOX' in NOTES.INI to remain absent or set to '0' will cause unnecessarily disk activity.

Server: Ace/Iris

Severity: Warning (High)

Explanation

The RM_NO_LOG_OBJECTS_IN_MAILBOX=1 setting in NOTES.INI will disable transaction logging of objects in mail.box, resulting in degraded performance when large emails are being sent. Notice that if a server goes down during the routing of a large email then that e-mail won't be in the transaction log for recovery. While RM_NO_LOG_OBJECTS_IN_MAILBOX=1 is the recommended configuration, any variation of this setting other than RM_NO_LOG_OBJECTS_IN_MAILBOX=0 should successfully disable the logging. Default: When transaction logging is enabled, then mail.box objects are logged. Technote 1181983 'Transactional Logger Backlog in Mailbox' <http://www-1.ibm.com/support/docview.wss?rs=899&uid=swg21181983>

Recommendations

Set RM_NO_LOG_OBJECTS_IN_MAILBOX=1 in NOTES.INI to reduce disk activity.

Links & References

[Technote 1227246 'Server crash results in only one request processed when two requests are sent' \(IBM/Lotus Technote\)](#)

Domino Configuration Tuner (DCT)

- ✓ Facilite les tâches d'administration
- ✓ Identifie les problèmes et les mauvaises configurations
- ✓ Suggestion de solutions possibles

<http://www.lotus.com/ldd/dominowiki.nsf/dx/domino-configurationtuner>

La version 8.5 en résumé

- Drag/Drop à l'intérieur de l'éditeur, Drag & Drop depuis Sametime
- Support déconnecté pour Activities
- Aide à l'adressage avec adresses multiples
- Support VCard
- iNotes
- Utilisateurs itinérants
- ID Vault & Shared Login
- Mac, Ubuntu, Citrix
- Agendas fédérés
- DAOS, DCT, Politiques Dynamiques, Performances
- Symphony 12, Quickr 811, Recherches dans Connections
- Designer Eclipse
- Domino Xpages, Réutilisation de vues (cf contacts, agenda)

Références

- <http://www.ibm.com/developerworks/lotus/documentation/domino/>

Rechercher Aller [Portée de la recherche : Tout](#)

Sommaire

- Domino 8.0 Administrator
- Domino 8.5 Administrator
- Lotus Notes 8.0
- Lotus Notes 8.5
 - Lotus Notes
 - Activities
 - Feeds
 - Portal Template Library
 - Composite Application Editor
 - Desktop Search for Notes
 - IBM Lotus Symphony
 - Portal Applications Catalog
 - Sametime
- Lotus Domino Designer 8.5
- IBM Lotus Notes Traveler 8.0.1
- Lotus Notes Traveler 8.5
- Alloy by IBM and SAP
- ibm.com: About IBM - Privacy - Contact
- Viewing information in the information center

developerWorks > Lotus > Documentation >

Lotus Domino documentation

Product documentation, white papers, Redbooks

Version 8.5 | Version 8.0.x | Version 7.0.x | Ver

↓ Lotus Domino for multiple platforms

The Lotus Domino documentation pages list product do

ditional documentation for supported releases of

| Language | Download / View online |
|----------|----------------------------------|
| English | HTML (view only) |
| English | HTML (view only) |
| English | PDF |
| English | NSF |
| English | PDF |
| English | HTML |

| Lotus Domino for multiple platforms |
|--|
| Title |
| Lotus Domino 8 Information Center |
| Lotus Notes Traveler 8.5 section in the Lotus Domino 8 |
| Lotus Notes and Lotus Domino 8.5 Quick Start Guide |
| Lotus Domino 8.5 Administrator Help |
| Lotus Domino 8.5 - Installing Domino Servers and Notes Clients |
| Lotus Notes, Domino, Domino Designer 8.5 Release Notes |

Et n'oubliez pas de remplir votre feuille d'évaluation !!

Merci



© IBM Corporation 2009. Tous droits Réservés.

The information contained in this publication is provided for informational purposes only. While efforts were made to verify the completeness and accuracy of the information contained in this publication, it is provided AS IS without warranty of any kind, express or implied. In addition, this information is based on IBM's current product plans and strategy, which are subject to change by IBM without notice. IBM shall not be responsible for any damages arising out of the use of, or otherwise related to, this publication or any other materials. Nothing contained in this publication is intended to, nor shall have the effect of, creating any warranties or representations from IBM or its suppliers or licensors, or altering the terms and conditions of the applicable license agreement governing the use of IBM software.

References in this publication to IBM products, programs, or services do not imply that they will be available in all countries in which IBM operates. Product release dates and/or capabilities referenced in this presentation may change at any time at IBM's sole discretion based on market opportunities or other factors, and are not intended to be a commitment to future product or feature availability in any way. Nothing contained in these materials is intended to, nor shall have the effect of, stating or implying that any activities undertaken by you will result in any specific sales, revenue growth, savings or other results.

IBM, the IBM logo, Lotus, Lotus Notes, Notes, Domino, Sametime, and Lotusphere are trademarks of International Business Machines Corporation in the United States, other countries, or both.

Microsoft and Windows are trademarks of Microsoft Corporation in the United States, other countries, or both.

