

## Introducing IBM Workplace Services Express



**IBM Workplace Services Express provides people with integrated collaboration tools and anywhere access to documents, business applications, information, and people, helping more people be more productive in the context of the business they do every day. This guide will introduce you to some of the features of IBM Workplace Services Express.**

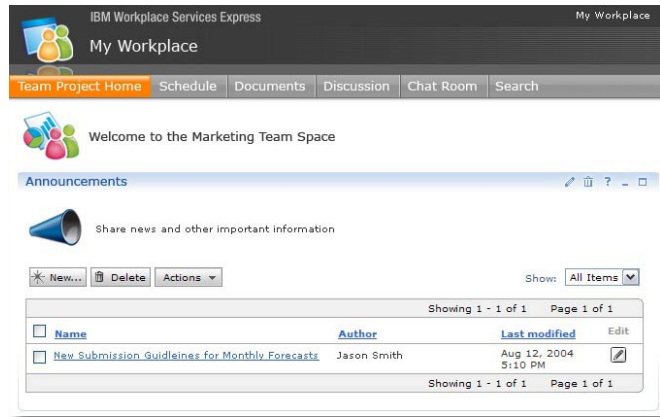
## Get flexible access to documents and business applications

### Before

Shared project documents are e-mailed to everyone on the team, feedback is gathered, and updates and revisions are manually managed. Any project-related business applications must be installed on every team member's PC, including home-office PCs.

### With IBM Workplace Services Express

You can use a Web browser to work with your documents and obtain access to your business applications, without being tied to a specific PC in a specific location.



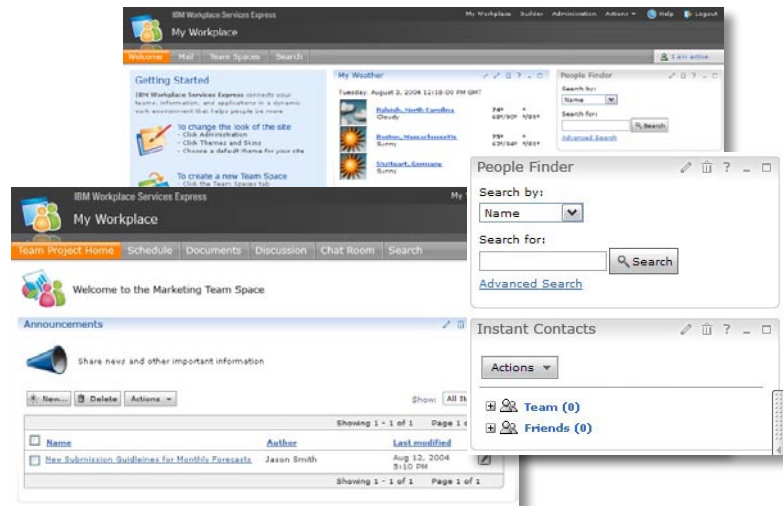
## Lower your costs

### Before

You upgrade applications and operating system software on every PC to support collaboration. You must also purchase, install and support a separate server for every function, including team rooms, instant messaging and a portal.

### With IBM Workplace Services Express

You can edit documents from your browser, and you need only one server to support team spaces, document management, instant messaging and an organizational portal.



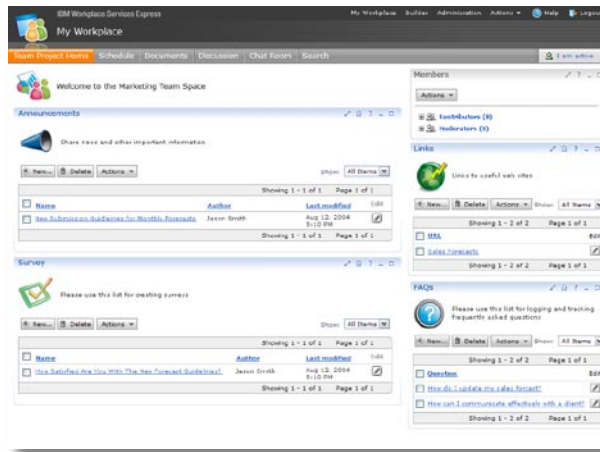
## Gain immediate value

### Before

When a new project begins, supporting software needs to be distributed to each team member, meetings need to be scheduled to share documents and so on.

### With IBM Workplace Services Express

You use ready-to-use team space templates to create online work environments where all teammates, internal and external, can access and work with project documents using a Web browser.



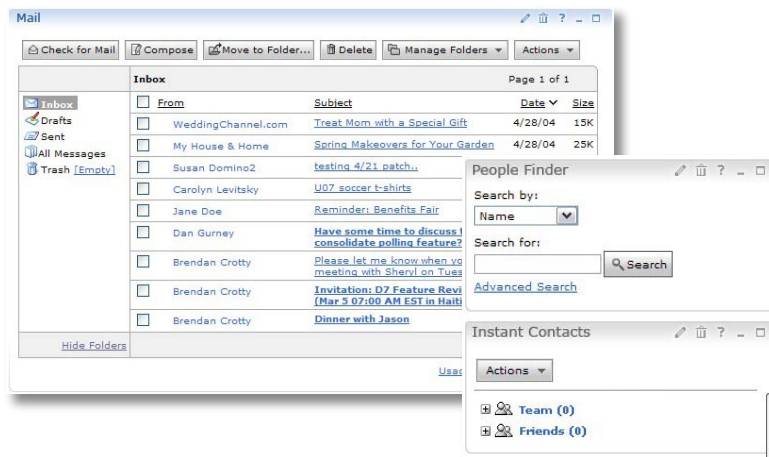
## Deliver a better user experience

### Before

You use one software application for e-mail and calendar, another for instant messaging—each with different user interfaces. A separate Web page provides company news.

### With IBM Workplace Services Express

A single and customizable online work environment provides instant messaging and access to e-mail, news and other information—all from a Web browser.



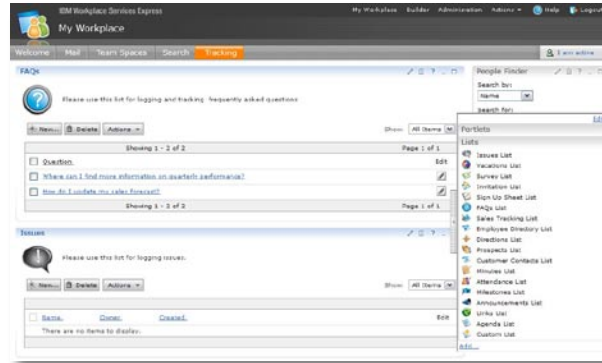
## Work the way *you* want to

### Before

You can't select the software applications you need, when you need them. Organizational information is provided on non-customizable internal Web pages.

### With IBM Workplace Services Express

You create custom online work environments on the fly, with all the applications you need. And you can easily customize these work environments to match your individual work preferences.



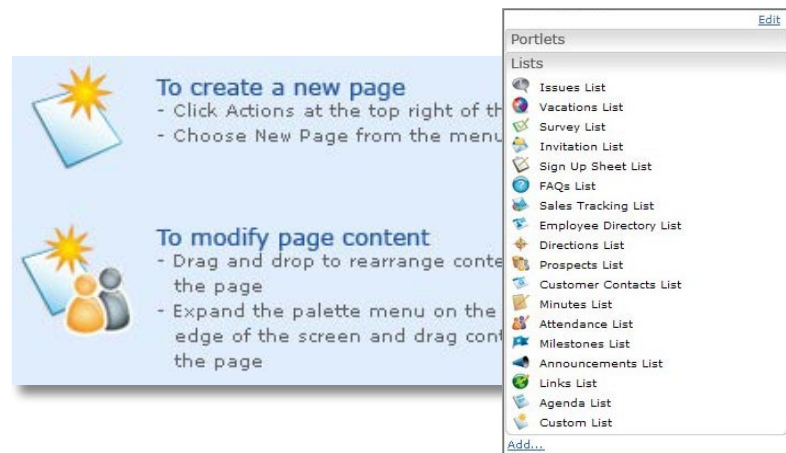
## Rapidly deploy new applications

### Before

An experienced programmer develops a new software application and provides it to IT, where someone must install it on every individual's PC.

### With IBM Workplace Services Express

A business user with a Web browser uses a graphical tool to choose data from a database and create a custom list application. The new application can then be added to new or existing team spaces by an administrator, or by the users themselves.



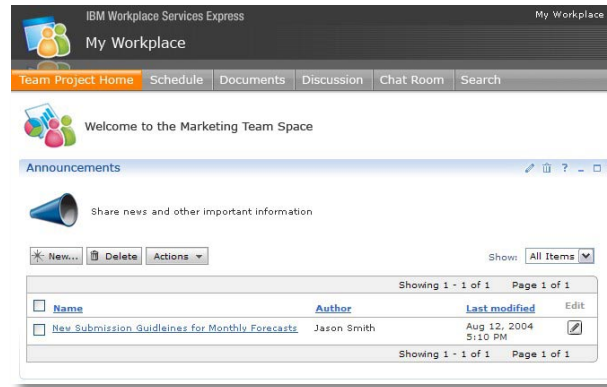
## Adapt quickly to organizational changes

### Before

A new person is hired and provided with a PC. The new hire then spends the next few days, weeks, or even months acquiring applications and Web site links that apply to his or her new position.

### With IBM Workplace Services Express

A new hire is added to a team space, receives an e-mail with a link to the team space, and is immediately able to get access to the information, documents and applications he or she needs.



## Respond faster to new opportunities

### Before

You receive a request for proposal (RFP) from a client, and you e-mail it to everyone who needs to provide input. Then, you collect feedback, work with the team to develop an initial proposal, distribute it through a second e-mail, collect revisions and so on.

### With IBM Workplace Services Express

You place the RFP in the sales department's team space, where you can track revisions and teammates can begin responding immediately.



Built on the server-managed deployment model that is a cornerstone of IBM's vision for the front end of computing, IBM Workplace Services Express is unique in its simplicity, out-of-the-box functionality and support for open standards, and can help provide your organization with greater business value, lower costs and faster return on investment.

**For more information**

To learn more about IBM Workplace Services Express, Version 2.0, visit:

**[ibm.com/software/workplace/servicesexpress](http://ibm.com/software/workplace/servicesexpress)**



© Copyright IBM Corporation 2004

IBM Corporation  
Software Group  
Route 100  
Somers, NY 10589  
U.S.A.

Produced in the United States of America  
11-04  
All Rights Reserved

IBM, the IBM logo and the on demand business logo are trademarks of International Business Machines Corporation in the United States, other countries or both.

Other company, product and service names may be trademarks or service marks of others.