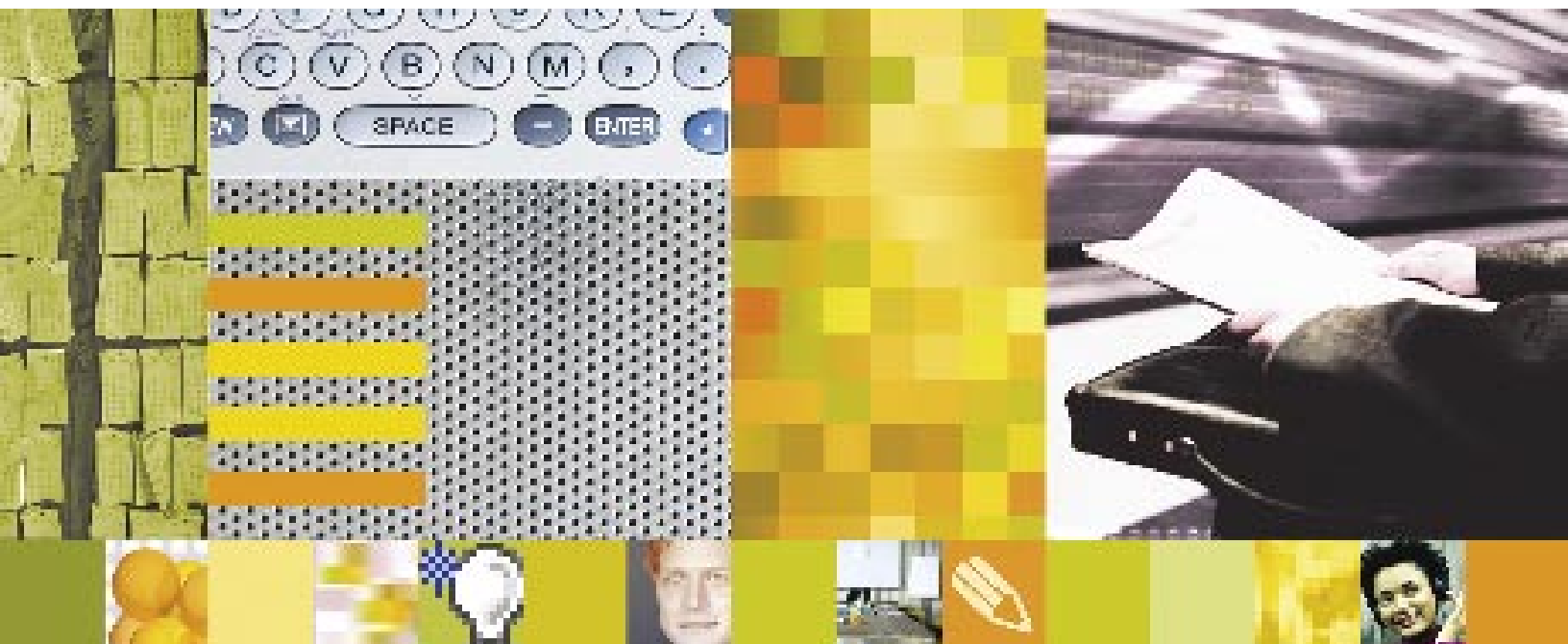


Linux solutions for e-business on demand
To meet your business objectives



Lotus software



**Lotus software for Linux.
Open standards. Collaborative solutions.
Intelligent choices to help support your future.**



Innovation. Ideas. Service. Keys to competing in a rapidly changing marketplace and to delivering e-business on demand™. To stay ahead requires unencumbered communication and collaboration all along your value chain. You need communication and collaboration systems that can surpass time and geographic boundaries. Systems that make efficient use of the IT infrastructure you have now—and the investments you may make down the road. So your organization can be more responsive, more productive and more proactive than the competition.

With every step of infrastructure development, you have a choice: use a proprietary solution which may limit your technology options, or use a solution built on open, industry standards. IBM solutions deliver value through open standards. Open standards-based solutions help you avoid being locked into using products from a single vendor. They give you the flexibility to change or modify your technology as your business strategies evolve. To better integrate your existing or disparate systems, whether inherited or purchased. And to free you from being tied to any one vendor or platform that may—or may not—be compatible with your future business strategies.

Lotus® software from IBM offers a broad range of solutions that runs on the Linux operating system—giving you the freedom and flexibility to help make changes to your infrastructure as your business needs dictate. Linux provides a scalable infrastructure based on open standards. So it's no surprise that, in terms of revenue share, Linux is the fastest-growing operating system. In fact, revenue market share for Linux is expected to grow by 14 percent by 2007.¹ And Lotus software for Linux gives you security-rich features in reliable, industry-leading solutions that integrate people with business processes and information to deliver robust communication, collaboration and accelerated decision-making capabilities.



“Moving to Lotus Notes and [Lotus] Domino 6 will absolutely save us money. With Lotus Notes and Domino 6 running on our Linux-based infrastructure, we can consolidate our servers, scale smoothly to add users, and achieve faster performance and greater reliability.”

– Andreas Walter, IT manager, BBDO Interactive



A portfolio of Linux-supported offerings gives you flexible communication systems

Lotus software for Linux can help you improve business productivity. And provide your employees with the capability to respond to virtually any customer need, demand, market opportunity or challenge with speed and agility. You can improve business flexibility by integrating disparate, unconnected business and IT processes—so employees can focus on core business objectives. With increased productivity, your company can grow faster with less expense.

IBM Lotus Domino Web Access 6.5™

Domino Web Access 6.5 (iNotes)™ software extends messaging and collaboration to Linux clients with support for the Mozilla browser— making it the first-ever, fully supported client-to-server collaboration solution for Linux. Whether you're choosing Lotus Domino on Linux or any of the other supported Domino server platforms as the back-end for Domino Web Access, you now have the flexibility to choose between accessing data using Microsoft Internet Explorer™ or with a Mozilla browser on a Linux desktop. This expanded Linux support builds upon the addition of Linux as a supported server platform for Lotus Domino Web Access 6.0.1. All to help you achieve greater return on existing Lotus Domino Web Access and infrastructure investments.

With Lotus Domino Web Access supporting the Mozilla browser on Linux, users can access messaging and collaborative functionality that was previously only available on Microsoft Internet Explorer.

- *Take advantage of offline support for access to mail and calendars—empowering users detached from the network to maintain productivity.*
- *Leverage collaboration through support for fully integrated instant messaging and presence awareness with IBM Lotus Instant Messaging—enabling you to interact with others in real time, in the context of business.**

Lotus Domino Web Access software can help you realize the cost savings of deploying Linux at both the server and the client ends—so you can save IT dollars while extending messaging and collaboration to additional users.

IBM Lotus Domino

IBM Lotus Domino for Linux software is designed, built and tested to help you do more with fewer resources. It provides a powerful software solution to handle the messaging and collaboration needs of any-size business. It supports a variety of clients, including IBM Lotus Notes® running on Microsoft Windows® or Macintosh, IBM Lotus Domino Web Access running on Windows, Mozilla on Linux desktops, IBM Lotus Domino Access for Microsoft Outlook and IBM Lotus Domino WebMail. Through distributions from Red Hat and the United Linux Consortium, you can choose the best distribution for your organization—giving you additional flexibility and reliability for your Linux infrastructure. In a single solution, Lotus Domino for Linux provides:

- *Messaging, calendar and scheduling capabilities—allowing employees, customers and business associates to communicate and share information efficiently.*
- *Web server enhancements and application support—helping to improve productivity by giving developers the ability to create, build and deploy applications faster, more easily and more efficiently through the use of supported WebDAV options.*
- *Enterprise integration tools, a security-rich environment, workflow capabilities and administration services—decreasing manual and administrative tasks and freeing these resources to focus on other business goals.*

IBM Lotus Domino for Linux on zSeries systems

IBM Lotus Domino 6.5 provides support for Linux on IBM @server® zSeries® systems. Lotus Domino 6.5 for Linux on zSeries systems supports Linux for IBM S/390® and distributions from the United Linux Consortium, which consists of Linux contributions from Conectiva, SuSE and Turbolinux. Linux on zSeries systems provides a scalable platform that supports potential cost-saving server consolidation to help drive down the total cost of ownership of your Linux technology-based operating environment.

Extending support to Linux on zSeries systems complements existing support for Linux on Intel® technology-based systems. In addition to support for Linux, IBM solutions support a broad range of platforms, allowing you to maximize the value of your existing infrastructure. Lotus Domino cross-platform server support now extends to Linux, Microsoft Windows, UNIX®, IBM OS/400® and IBM z/OS® operating systems—the broadest range of server options offered by any collaboration and messaging solution.



IBM Lotus Enterprise Integrator for Domino 6.5

IBM Lotus Enterprise Integrator 6.5 provides support for Linux and enables scalable, high-performance, bidirectional exchange of data between Lotus Domino and a wide range of relational databases, including IBM DB2®, Oracle, Sybase, SQL Server and Open Database Connectivity (ODBC). With support for Linux, Lotus Enterprise Integrator provides a modular, standards-based solution that easily integrates with other applications, operating systems and external data structures. So you can smoothly share data across business units and help realize greater efficiencies from your business information.

IBM Lotus Workflow 3.0.1

IBM Lotus Workflow™ 3.0.1 provides another collaboration solution for your IT communication systems. With support for Red Hat Linux 6.2 and 7.2 distributions, Lotus Workflow 3.0.1 gives you:

- *Easy-to-use tools that enable you to design and adapt business processes and to track projects as they move through your organization.*
- *Improved reliability that helps you improve productivity and reduce project cycle times through more efficient work management.*
- *Support for the open and robust Linux platform that provides a flexible solution to help automate complex workflow processes with little or no programming. So you can lower administrative time and expense, and free IT resources to work on other business-critical tasks.*



IBM Lotus Domino Collaboration Express and IBM Lotus Domino Utility Server Express for small and midsize businesses

Specifically designed for small to midsize businesses, new Lotus Express offerings from IBM provide market-leading collaboration software featuring simplified deployment and out-of-the-box functionality. So growing businesses can start realizing e-business objectives faster, with an affordable upfront investment. IBM Lotus Express offerings provide cost-effective messaging and collaboration functionality, simplified licensing and reduced administration requirements. Both software products are built with the same enterprise-grade Lotus Domino 6 and Lotus Notes 6 software that powers mission-critical applications for corporations worldwide. And Lotus Domino Collaboration Express and Lotus Domino Utility Server Express now offer the performance of IBM enterprise messaging and collaboration software in a package that smaller organizations can easily exploit. And with support for Linux, you can smoothly integrate Lotus Express offerings with your IT infrastructure.

IBM Lotus Workplace support for Linux

Integrate multiple collaboration functions and capabilities with a single, security-rich, reliable application you can manage easily. IBM Lotus Workplace products running on Linux make it possible. Built with a modular design and based on open standards, Lotus Workplace products deliver support for messaging, presence awareness, instant messaging, teaming, e-learning, content management, document sharing and other collaboration tasks your organization may need to be highly responsive and productive. Lotus Workplace provides a platform that incorporates these functions—integrating people with business processes to help improve business productivity. And support for Linux is available for Lotus Workplace products on the server as well as on the client. This support provides your Linux technology-based enterprise with a cost-effective way to extend collaboration across the enterprise and create a truly responsive organization leveraging dynamic, collaborative workplaces.

Why IBM Lotus software for Linux?

IBM is committed to Linux and to the open-source community. The Lotus software portfolio from IBM that supports Linux gives you choice and flexibility. Through open standards you can expand and make changes to your collaboration infrastructure with ease. And deploy solutions on the server, the client or both—to make decisions based on your business needs, goals and IT budget. IBM software is backed by extensive service and support. You can also tap collaborative e-business solutions with support for Linux from thousands of independent software vendors (ISVs) and IBM Business Partners. Through ongoing training certification in IBM software, these companies can provide technical support and business services to help you reach your e-business goals with an open and flexible collaboration infrastructure.

Leading-edge services and solutions— available whenever and wherever you need them

Choosing Lotus software from IBM means you have access to the vast resources available through the global team at IBM Software Services for Lotus and its network of qualified Business Partners. We're here to help you quickly maximize the capabilities of Lotus software—and speed return on these investments. With end-to-end IBM solutions for Linux you have flexibility and choice—and greater potential to turn your IT investments into quantifiable business value.

For more information

To learn more about how Lotus software for Linux can help your business become more flexible, responsive and ready to deliver e-business on demand, visit the following Web sites.

To learn more about Lotus Domino for Linux, visit:

ibm.com/lotus/dominolinux

To learn more about Lotus Domino Express, visit:

ibm.com/lotus/dominoexpress

To learn more about IBM software for Linux, visit:

ibm.com/software/os/linux/software/index.jsp

To learn more about IBM Software Services for Lotus, visit:

ibm.com/lotus/services



© Copyright IBM Corporation 2003

Lotus Software
IBM Software Group
One Rogers Street
Cambridge, MA 02142
U.S.A.

Produced in the United States of America
12-03
All Rights Reserved

DB2, Domino, the e-business logo, e-business on demand, the e(logo)business on demand lockup, @server, IBM, the IBM logo, iNotes, Lotus, Lotus Notes, Lotus Workflow, OS/400, S/390, z/OS and zSeries are trademarks of International Business Machines Corporation in the United States, other countries or both.

Intel is a trademark of Intel Corporation in the United States, other countries or both.

Microsoft and Windows are trademarks of Microsoft Corporation in the United States, other countries or both.

UNIX is a registered trademark of The Open Group in the United States and other countries.

Other company, product and service names may be trademarks or service marks of others.

* Note: License or entitlement for Lotus Instant Messaging and Web Conferencing required.

¹ Worldwide Client and Server Operating Environments Forecast, 2002-2007: Microsoft Growth Sets Stage for SOE Dominance, Al Gillen and Dan Kusnetzky, IDC, Sep 2003.

THE INFORMATION CONTAINED IN THIS DOCUMENTATION IS PROVIDED FOR INFORMATIONAL PURPOSES ONLY. WHILE EFFORTS WERE MADE TO VERIFY THE COMPLETENESS AND ACCURACY OF THE INFORMATION CONTAINED IN THIS DOCUMENTATION, IT IS PROVIDED "AS IS" WITHOUT WARRANTY OF ANY KIND, EXPRESS OR IMPLIED. IN ADDITION, THIS INFORMATION IS BASED ON IBM'S CURRENT PRODUCT PLANS AND STRATEGY, WHICH ARE SUBJECT TO CHANGE BY IBM WITHOUT NOTICE. IBM SHALL NOT BE RESPONSIBLE FOR ANY DAMAGES ARISING OUT OF THE USE OF, OR OTHERWISE RELATED TO, THIS DOCUMENTATION OR ANY OTHER DOCUMENTATION. NOTHING CONTAINED IN THIS DOCUMENTATION IS INTENDED TO, NOR SHALL HAVE THE EFFECT OF, CREATING ANY WARRANTIES OR REPRESENTATIONS FROM IBM (OR ITS SUPPLIERS OR LICENSORS), OR ALTERING THE TERMS AND CONDITIONS OF THE APPLICABLE LICENSE AGREEMENT GOVERNING THE USE OF IBM SOFTWARE.