

IBM Lotus Domino Access for Microsoft Outlook, Version 6.5.1

Highlights

- **Provides Microsoft Outlook users with the robust, proven network security, replication and clustering capabilities of Lotus Domino**
- **Helps eliminate retraining by letting users read e-mail, perform calendar and scheduling tasks, and manage PIM data through the Microsoft Outlook client**
- **Enables you to reduce network traffic by transporting messages through Domino advanced streaming replication and built-in data compression**
- **Allows users to access both mail and calendar data when connected and when offline**
- **Installs smoothly using standard MSI technology so you can easily update users' desktops through your company's standard software delivery system**

Enhance your infrastructure without disrupting user productivity

You want to protect your network and boost its reliability with the power of IBM Lotus® Domino® software.

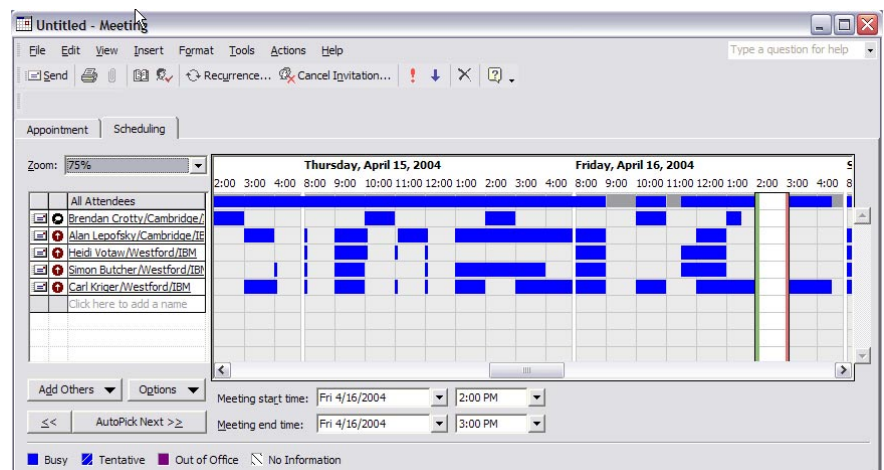
But your end users have grown accustomed to using Microsoft® Outlook as their mail client. An immediate conversion of your organization's mail client would not only be disruptive to users; it might also be beyond your budget.

IBM Lotus Domino Access for Microsoft Outlook 6.5.1 can provide an ideal solution to enable you to migrate away from Microsoft Exchange—without having to retrain users. Employees can continue using their existing Outlook client, while you replace your Microsoft

Exchange server infrastructure with scalable and reliable Lotus Domino servers. And the flexibility of Lotus Domino software means you can run your messaging environment on the hardware platform and operation system of your choice, including Linux.

The IBM Lotus Domino 6.5.1 family — an integrated product release

With this release, IBM delivers all its Domino software-based collaboration products on a common set of operating systems, languages and supported browsers. Enabling you to quickly and easily upgrade to Lotus Domino Access for Microsoft Outlook 6.5.1— with the confidence that it will run seamlessly with other 6.5.1 products.



Lotus Domino Access for Microsoft Outlook lets Microsoft Outlook users check Domino users' calendars for free or busy times.

Improve the user experience

Lotus Domino Access for Microsoft Outlook 6.5.1 installs as an Outlook client plug-in on your employees' machines. After the plug-in is installed, users continue to read their e-mail, perform calendar and scheduling tasks, and manage their contacts just as they always have. No retraining is required. However, instead of accessing Microsoft Exchange servers, they will access Lotus Domino servers. You can leverage Domino integrated spam prevention, streaming replication and network compression, and advanced server clustering (failover and load balancing) features to improve the quality of service you provide to everyone along your value chain.

Prevent unwanted e-mail and spam

Lotus Domino Access for Microsoft Outlook leverages Domino server anti-spam technology, allowing you to manage junk e-mail at the server level—reducing the amount of unwanted mail to reach your users' inboxes. By using Lotus Domino servers, you get a variety of robust features including:

- *Domino Name System (DNS) Blacklists, to allow incoming e-mails to be checked against lists of known spam offenders.*
- *Server-based mail rules that let you set filtering conditions based on specific criteria and then define actions to take.*
- *Inbound Simple Mail Transfer Protocol (SMTP) controls, such as verify connecting hostname.*

Dealing with spam can take up valuable time and storage space. By reducing the amount of unwanted e-mail, you can increase user productivity, stop wasting storage space and reduce network bandwidth usage.

Keep in synch

With Lotus Domino Access for Microsoft Outlook, the Outlook mail client uses advanced Domino replication technology to synchronize the native Outlook Personal Folder Storage (PST) file located on a user's machine, to a Domino software-based mail file residing on the Domino server. Users can work with their e-mail and calendars offline, and their data will be synchronized with the server the next time they connect.

Reduce network bandwidth usage

Leveraging the same technology used by the IBM Lotus Notes® client, Lotus Domino Access for Microsoft Outlook 6.5.1 sends mail from the Outlook client to the Domino server using the Notes Remote Procedure Call (NRPC) protocol. This allows Outlook users to benefit from the same network optimization features enjoyed by Lotus Notes users. Domino streaming replication reduces the time necessary to synchronize data by reducing the number of connections required between the client and the server. To help reduce the size of the data being delivered, Domino built-in compression capability decreases the number of bytes sent during these transactions, reducing your network bandwidth usage—and reducing your costs in the process.

Provide around-the-clock availability

A cluster is a group of Domino servers which provide load balancing and failover when a server in the group isn't available—whether that's because of planned outages, such as upgrades, or unplanned outages, such as hardware failures. Either way, you want to ensure your users have access to their e-mail and calendars at all times. Lotus Domino Access for Microsoft Outlook lets you take full advantage of Domino advanced clustering features, helping provide your users with a fully reliable messaging system at all times. If one server is down, another server takes over—helping you deliver the around-the-clock availability your organization needs to help employees maximize productivity.

Choice of client access

Lotus Domino Access for Microsoft Outlook supports interoperability between IBM Lotus Notes® and Outlook users, including the ability to send and receive e-mail. Users can also look up free and busy times for colleagues, rooms and resources. So, not only can users determine the availability of a team member, they can also find out if a conference room, or even an overhead projector, is available. If some users are using a Lotus Notes client and others are using Lotus Domino Access for Microsoft Outlook, they can each view the others' busy-time calendar information and send

meeting invitations, without concern about which client anyone is using. You can also provide your Outlook users with access to their mail, calendar and personal information management (PIM) data via a Web browser using IBM Lotus Domino Web Access, even if they're running the Mozilla browser on Linux.

Easy to deploy, easy to use

When migrating your existing Exchange servers to Domino, you may choose to switch all users over at a single time, or to have periods of coexistence where both systems are in production. Using included

Domino Upgrade Services, you can choose to automate the creation and configuration of users, and the conversion of mail files, for one user at a time, or for your entire existing environment. The installation and setup of Lotus Domino Access for Microsoft Outlook code is based on the Microsoft Standard Installer (MSI) process. This simplified installation process can be fully scripted, so that you can preselect options a user would normally have to choose. The scripted installation can then seamlessly integrate with your company's existing software distribution practices. You can also take advantage of a myriad of solutions and consulting services available from IBM Business Partners to help you with your migration and installation process.

Domino preferences in Outlook

Domino Access for Microsoft Outlook adds a new Domino Preferences page to the Outlook Options display screen. This add-in provides users access to several Domino features and settings. From this integrated display, users can perform a variety of tasks, including:

- *Change the password for their Notes® ID.*
- *Enable or disable the out-of-office agent.*
- *Manage replication settings.*
- *Set some general preferences for their mail and calendars.*



Domino preferences are integrated as part of the Options dialog box.

It's time to make the change to

Lotus Domino

Lotus Domino Access for Microsoft Outlook can enable your organization to migrate from Microsoft Exchange to Lotus Domino, without the worry of fully retraining your Outlook users. The move to Domino can help you to reduce your total cost of ownership with simplified administration, server consolidation, network bandwidth reductions and reduced spam.

You can improve your quality of service with Domino security, scalability and reliability. And help your users become more productive by letting them continue to use their familiar Outlook client—with all the added benefits of Lotus Domino.

For more information

To learn more about IBM Lotus Domino Access for Microsoft Outlook 6.5.1, visit:

ibm.com/software/lotus/products/accessoutlook/



© Copyright IBM Corporation 2004

Lotus Software
IBM Software Group
One Rogers Street
Cambridge, MA 02142
U.S.A.

Produced in the United States of America
04-04
All Rights Reserved

Domino, the e-business logo, the e(logo)business on demand lockup, IBM, the IBM logo, Lotus and Lotus Notes are trademarks of International Business Machines Corporation in the United States, other countries or both.

Intel and Pentium are trademarks of Intel Corporation in the United States, other countries or both.

Microsoft and Windows are trademarks of Microsoft Corporation in the United States, other countries or both.

Other company, product and service names may be trademarks or service marks of others.

IBM Lotus Domino Access for Microsoft Outlook 6.5.1 at a glance

End-user minimum hardware requirements

- Intel® Pentium® P133 processor or higher
- 136MB RAM
- Hard disk space requirements will vary depending on configuration; custom 135MB disk space minimum

End-user software requirements

- Microsoft Outlook 2000 or Microsoft Outlook 2002 with Service Pack (SP) 2
- Microsoft Windows® 2000 and Windows XP

Administrator software requirements

- IBM Lotus Domino Server 6.5.1 or higher
 - IBM Lotus Domino Administrator Client 6.5 or higher (IBM Lotus Domino Administrator Client 6.5.1 recommended)
-