

CICS Batch Application Control for z/OS Version 1.1

Product Overview



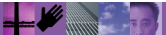
CICS Batch Application Control for z/OS – Version 1.1

- **New IBM tool to improve CICS availability**
 - ▶ Announced November 4, 2004
 - ▶ Generally available November 26, 2004
- **What does it do?**
 - ▶ Provides the ability to change the state of a CICS resource from a batch job step
 - ▶ Tracks CICS resource state change requests across CICS regions and batch jobs
 - ▶ Ensures CICS resources are set to their correct state when the CICS region is started



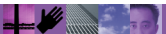
CICS Batch Application Control for z/OS – Version 1.1

- **Why does a customer want it?**
 - ▶ Reduces the likelihood of errors, abends, and unavailable resources in batch job processing
 - ▶ Improves CICS availability
 - ▶ Reduces the amount of operator intervention required for normal batch processing



CICS BAC – Features

- Dynamic control of CICS resources
 - ▶ File control (VSAM files)
 - ▶ Transient data queues
 - ▶ Transactions
 - ▶ Programs
- Batch request utility provides the capability to alter a resource's state from "outside" of CICS
 - ▶ State change made at time of request if CICS is active
 - ▶ State change made at CICS startup if CICS is not active
- Tracks resource state change requests, including...
 - ▶ Request from batch request utility
 - ▶ CICS SPI state change requests
 - ▶ CEMT state change requests



CICS BAC – Features (cont'd)

- Ensures CICS resources are set to their last requested state at CICS region startup
 - Depending on type of region startup
 - Before CICS applications begin processing
- Administration functions provided by a Windows-based GUI
 - Set/maintain CICS BAC region properties
 - Define resources to be processed by CICS BAC
- Associate programs/transactions with files or TDQueues
 - Programs/transactions enabled after file or TDQueue opened
 - Programs/transactions disabled before file or TDQueue closed
 - Up to 512 of each can be specified with a file or TDQueue
- Application groups
 - Logical grouping of files, TDQueues, programs, and/or transactions
 - Group processed as a single entity with a single command

5

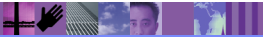
CICS BAC – Features (cont'd)

- Application Lists
 - Logical grouping of application groups
 - One list can contain up to 512 groups
- LINK command
 - LINK to CICS application program (synchronous processing)
 - Pass commarea of up to 256 bytes
 - Returned commarea “dumped” to print file
- START command
 - START a CICS transaction (asynchronous processing)
 - Pass data of up to 256 bytes
- RUNCEMT command
 - Issue any CEMT command in the target CICS region
 - Returned data “dumped” to print file

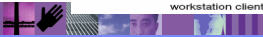
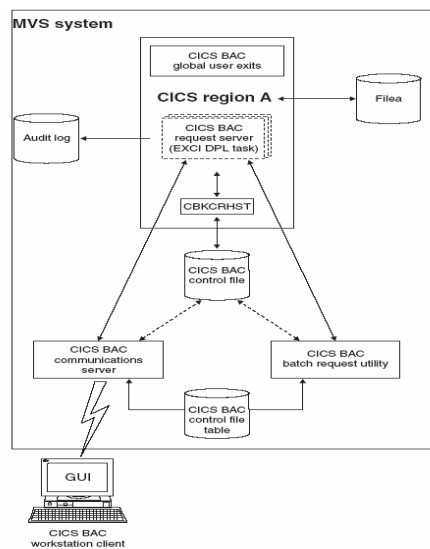
6

CICS BAC – Features (cont'd)

- Simple command language
 - ▶ Similar to CICS SPI/API commands
- Audit log
 - ▶ SYSPRINT or data set
 - ▶ Batch request utility commands and CICS SPI requests
 - ▶ Logging done whether CICS is up or down
- Undefined object processing
 - ▶ Resource does not have to be previously defined to CICS BAC in order to issue commands against it or track it's state changes
- CICS EXCI used to communicate between batch request utility or communication server and CICS region
- Batch request utility can command server can ship requests to any CICS region in the CICSplex.
- Sample migration utility



CICS BAC – component diagram



CICS BAC Components

- CICS component
 - ▶ Startup processor
 - ▶ Request server
 - ▶ Request server subtask
 - ▶ Control file
 - ▶ Global User Exits
- Control file table
 - ▶ PDS member containing “cross reference” between CICS applid and region’s control file data set name
 - ▶ Can be in CBKPARMS DD data set or MVS logical parmlib concatenation



CICS BAC Components (cont'd)

- Communication server
 - ▶ Runs as an MVS started task
 - ▶ “Middleware” between workstation administration client and CICS request server
 - ▶ Can process workstation request natively if target CICS region is down
 - ▶ Not required for any other processing



CICS BAC Components (cont'd)

- Batch request utility
 - ▶ Runs as a batch job step
 - ▶ Used to issue commands to target CICS region
 - ▶ Communicates with CICS via CICS EXCI
 - ▶ Single instance can communicate (“sequentially”) with multiple CICS regions throughout the CICSplex
 - ▶ Can update target CICS region’s control file directly if CICS region is down
 - ▶ Uses Control File Table to determine target CICS region’s control file data set name



CICS BAC – Batch request utility commands

- SET FILE command
 - ▶ Open/closed
 - ▶ Enabled/disabled
 - ▶ Access options
 - ▶ Primary/alternate/new data set name
 - ▶ Process associated transaction IDs and/or programs
- SET TDQUEUE command
 - ▶ Open/closed
 - ▶ Enabled/disabled
 - ▶ Process associated transaction IDs and/or programs
- SET TRANSID command
 - ▶ Enabled/disabled
- SET PROGRAM command
 - ▶ Enabled/disabled



CICS BAC – Batch request utility commands (cont'd)

- SET GROUP/LIST command
 - ▶ Open/closed
 - ▶ Enabled/disabled
 - ▶ Primary/alternate DSN
- DEFAULT commands
 - ▶ Sets various default values to be used until subsequent DEFAULT command is encountered
 - ▶ Default values can be overridden on a single command
- LINK/START/RUNCENT



CICS BAC – Installation overview

- SMP/E installation of distribution data sets
 - ▶ LOADLIB
 - ▶ SAMPLIB
 - ▶ Workstation administration client
- CICS installation
 - ▶ Define and initialize control file (one per CICS region)
 - ▶ Add CICS BAC LOADLIB to DFHRPL concatenation
 - ▶ Define CICS BAC resource definitions – transaction ID, programs, mapset, file
 - ▶ Decide on CICS BAC startup and shutdown method
 - ▶ Start CICS BAC in CICS region



CICS BAC – Installation overview (cont'd)

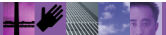
- Create communication server started task JCL
 - ▶ APF-authorize LOADLIB is workstation request security check is to be performed
 - ▶ SDFHEXCI data set must be available
 - ▶ Start communication server
- FTP workstation administration client setup.exe file to workstation and install it
 - ▶ “Typical” InstallShield installation
 - ▶ Create CICS region folder, region properties, and default values/definitions
 - ▶ Define objects as necessary
 - ▶ Upload region folder contents to CICS region control file

CICS Batch Application Control – summary

- Easy to install and use
- Command language intuitive to CICS programmers
- Provides the most often used capabilities of DADS+, CAFC, etc.
- Sample migration utility can be tailored to help migrate from competitive product
- Takes advantage of current technology

CICS Batch Application Control

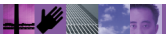
Workstation Administration Client Screen Shots



The screenshot shows the 'CICS Batch Application Control for z/OS' window. It features a menu bar (File, Edit, View, Help), a toolbar, and a main content area. On the left, a tree view shows the hierarchy: CICS Batch Application Control > Default Properties > CICS*000 > Files, TDQueues, TransIDs, Programs, Application Groups, and Application Lists. The main area displays a table with the following data:

Object Name	Date Created	Date Last Modified	Date Last Accessed
Region Properties	10/25/2004 11:15:15 PM	10/25/2004 11:15:16 PM	11/08/2004

At the bottom of the window, a status bar indicates: 'CICS region has been selected.' | Host: your.host.computer:56677 | CP: US English - 1140 | Normal Mode



Maintain Properties for CICS Region CICSPROD

File Help

Save Upload Download Cancel User ID Set Host Help

CICS Batch Application Control for z/OS

Region startup options | Region termination options | Batch request processing | Undefined object processing | Miscellaneous options

Any changes to the options on this tab will not take effect until they are uploaded and CICS BAC has been restarted in the CICS region.

CICS startup processing

Check one or more boxes below to specify which types of CICS startups should include CICS BAC processing. If a startup type is checked, CICS BAC will reset all known resources to their last requested state. This can be overridden by an individual object's setting.

Cold start Warm start Emergency start

CICS BAC state monitor activation

Specify below which resource types you want the CICS BAC state monitor to track. If a resource is not tracked, state changes made to it will not be logged and cannot be set during CICS BAC startup.

Files Transaction IDs
 TDQueues Programs

CICS BAC internal trace options

Specify CICS BAC internal trace options below. To disable internal tracing, specify zero for the number of trace table entries.

Number of trace table entries to allocate (0 to 9999)

Trace only module entry and exit points.
 Trace all trace points.

CLOSED/ENABLED status change

During region startup processing, if a file should be set to "open/enabled", and the file is currently "closed/enabled", should the file remain "closed/enabled" so it will be opened the next time it is accessed? Doing so may reduce the amount of time it takes for the region to initialize.

Yes, leave closed/enabled No, set to open/enabled

Host: your.host.computer:56677 | CP: US English - 1140 | Normal Mode

Maintain Properties for CICS Region CICSPROD

File Help

Save Upload Download Cancel User ID Set Host Help

CICS Batch Application Control for z/OS

Region startup options | **Region termination options** | Batch request processing | Undefined object processing | Miscellaneous options

Any changes to the options on this tab will take effect immediately after they are uploaded to the region control file.

CICS abnormal termination options for workstation client requests

Specify the action to be taken by the CICS BAC workstation client if the CICS region is not available and the last time the region was shut down, it did not go through normal (PLTSD) shutdown processing.

Continue processing the client upload/download/query request as if the region had shutdown normally.
 Reject the client upload/download/query request.

Should the CICS region's shutdown flag be reset to normal in addition to the action taken above?
 Yes No

CICS abnormal termination options for batch request utility

Specify the action to be taken by the CICS BAC batch request utility if the CICS region is not available and the last time the region was shut down, it did not go through normal (PLTSD) shutdown processing.

Continue processing as if the region had shutdown normally.
 Terminate the batch request utility job step with return code:
 Abend the batch request utility job step with user abend code:
 Write a message to the MVS console and wait for a reply to determine what action should be done.

Should the CICS region's shutdown status flag be reset to normal in addition to the action taken above?
 Yes No

Host: your.host.computer:56677 | CP: US English - 1140 | Normal Mode

Maintain Properties for CICS Region CICSPROD

File Help

Save Upload Download Cancel User ID Set Host Help

CICS Batch Application Control for z/OS

Region startup options Region termination options **Batch request processing** Undefined object processing Miscellaneous options

Any changes to the options on this tab will take effect immediately after they are uploaded to the CICS region control file.

Batch request utility command types
Specify the batch request utility command types that are allowed to be executed in this CICS region by checking the appropriate boxes below. If the command is not allowed, the action taken will be the determined by the option specified to the right.

Set file commands
 Set TDQueue commands
 Set transaction ID commands
 Set program commands
 RUNCEMT commands
 LINK commands
 START commands

Disallowed command action
Indicate below the action to be taken if a disallowed command is encountered.

Ignore the command/object and continue with next command/object.
 Terminate the batch request utility job step with return code:
 Abend the batch request utility job step with abend code:

CLOSED/ENABLED status change
If a batch request utility command states to set a file to "open/enabled", and the file is currently "closed/enabled", should the file remain "closed/enabled" so it will be opened next time it is accessed?

Yes, leave closed/enabled No, set to open/enabled

Host: your.host.computer:56677 CP: US English - 1140 Normal Mode

Maintain Properties for CICS Region CICSPROD

File Help

Save Upload Download Cancel User ID Set Host Help

CICS Batch Application Control for z/OS

Region startup options Region termination options Batch request processing **Undefined object processing** Miscellaneous options

Any changes to the options on this tab will take effect immediately after they are uploaded to the CICS region control file.

Undefined objects encountered by batch request utility
Select the types of objects that can be processed on behalf of the batch request utility if the object does not have a definition in the CICS region's control file.

Files Transaction IDs
 TDQueues Programs

Specify the action to be taken by the batch request utility if a disallowed undefined object is encountered.

Ignore command/object and continue with the next command/object.
 Terminate the batch request utility job step with return code:
 Abend the batch request utility job step with abend code:

When an undefined object is allowed to be processed as a result of the settings above, should a record for the object be created in the control file? Specifying yes causes an object record to be created using the CICS region's default values for the object type. The new object record will be added to the region's control file, and CICS BAC will be able to set the object's state to its last known state during CICS BAC region startup processing.

Yes No

Undefined objects encountered by CICS state monitor
The CICS state monitor component of CICS BAC monitors state change requests for files, transient data queues, programs and transaction IDs originating from a program other than CICS BAC programs. For example, it recognizes when a file is disabled via the CICS CEMT command.

Should the CICS state monitor create object records when it encounters a state change request for an object that is undefined to CICS BAC? Specifying yes enables CICS BAC to track state change requests for the resource types selected on the left side of this panel that originate by means other than the CICS BAC batch request utility. This will assist CICS BAC in correctly setting the resource's state during startup processing.

Yes No

Host: your.host.computer:56677 CP: US English - 1140 Normal Mode

Maintain Properties for CICS Region CICSPROD

File Help

Save Upload Download Cancel User ID Set Host Help

CICS Batch Application Control for z/OS

Region startup options Region termination options Batch request processing Undefined object processing **Miscellaneous options**

Audit log options

The following options will take effect immediately after the region properties have been uploaded to the host.

- Log error conditions and failed requests.
- Log successful resource state changes.
- Use the options in this frame if the batch request utility processes commands for this CICS region when the region is not available.

The following options will take effect after the region properties have been uploaded and CICS BAC has been restarted.

- Dynamically allocate the audit log using the information below if it is not preallocated in the region's JCL.
 - Allocate the log to SYSOUT.
 - Allocate the log using the following data set name and disposition:

Allocation disposition if using data set: MOD SHR OLD

Convert SET FILE/TDQ OPENSTATUS(OPEN) commands

The options below will take effect for the next batch request utility job step after the region properties have been uploaded to the host.

Check the appropriate boxes below to cause CICS BAC to change batch request utility SET FILE and SET TDQUEUE commands from OPEN to OPEN/ENABLE if OPENSTATUS(OPEN) is specified and the ENABLESTATUS parameter is not.

- Convert OPEN to OPEN/ENABLE

Host: your.host.computer:56677 CP: US English - 1140 Normal Mode

Maintain Properties for File FILEA in CICS Region CICSPROD

File Help

Save Upload Download Cancel User ID Set Host Help

CICS Batch Application Control for z/OS

File options File state information Transaction list Program list

Click **DOWNLOAD** in the toolbar above to download the most recent information for this object.

(Date and time of latest download is not available.)

File name: FILEA

File state startup options

Check one or more boxes below to specify the types of CICS startups for which CICS BAC should ensure that this file's state (data set name, disposition, OPENICLOSE, ENABLE/DISABLE, and request types) is set to its last requested status, regardless of the status requested in the file's CICS RDO entry.

- Cold start
- Warm start
- Emergency start
- Use CICS region's settings

File data set names

Specify below the data set names to use when a batch request utility SET FILE command for this file contains the DSN(PRIMARY) or DSN(ALTERNATE) parameter.

Primary data set name:

Alternate data set name:

Host: your.host.computer:56677 CP: US English - 1140 Normal Mode

Maintain Properties for File FILEA in CICS Region CICS220A

File Help

Save Upload Download Cancel User ID Set Host Help

CICS Batch Application Control for z/OS

File options **File state information** Transaction list Program list

Click **DOWNLOAD** in the toolbar above to download the most recent information for this object.

(Information is current as of 2004/11/08 at 20:15:16)

Data Set Name:

Last processed	Last state
Date: <input type="text" value="11/08/2004"/>	Enabled or disabled? <input type="text" value="Enabled"/>
Time: <input type="text" value="19:52:17"/>	Open or closed? <input type="text" value="Open"/>
Job number: <input type="text" value="STC03229"/>	Readable? <input type="text" value="Yes"/>
Job name: <input type="text" value="CICS220A"/>	Browsable? <input type="text" value="Yes"/>
Procedure name: <input type="text"/>	Addable? <input type="text" value="Yes"/>
Job step name: <input type="text" value="CICS"/>	Updatable? <input type="text" value="Yes"/>
System ID: <input type="text" value="F390"/>	Deletable? <input type="text" value="Yes"/>
Processed by: <input type="text" value="CICS BAC startup processing"/>	Allocation disposition: <input type="text" value="Share"/>

Host: your.host.computer:56677 CP: US English - 1140 Normal Mode

Maintain Properties for File FILEA in CICS Region CICS220A

File Help

Save Upload Download Cancel User ID Set Host Help

CICS Batch Application Control for z/OS

File options File state information **Transaction list** Program list

Click **DOWNLOAD** in the toolbar above to download the most recent information for this object.

(List at left below is current as of 2004/11/08 at 20:15:16)

Transaction IDs in the current file list	Transaction List Controls	All transaction IDs NOT in current file list
<input type="checkbox"/> AMNU <input type="checkbox"/> AADD 	<input type="button" value="Move up"/> <input type="button" value="Add"/> <input type="button" value="Remove"/> <input type="button" value="Move down"/>	
Number of transaction IDs in list (maximum 512) <input type="text" value="0002"/> Add the transaction IDs provided in the box below: <input type="text"/>	<input type="button" value="Get transaction IDs from host"/>	Key for transaction ID locations <input type="checkbox"/> Transaction IDs from current list <input type="checkbox"/> Transaction IDs on host computer

Host: your.host.computer:56677 CP: US English - 1140 Normal Mode