

## IBM DB2 CommonStore for Exchange Server, Version 8.3

### Highlights

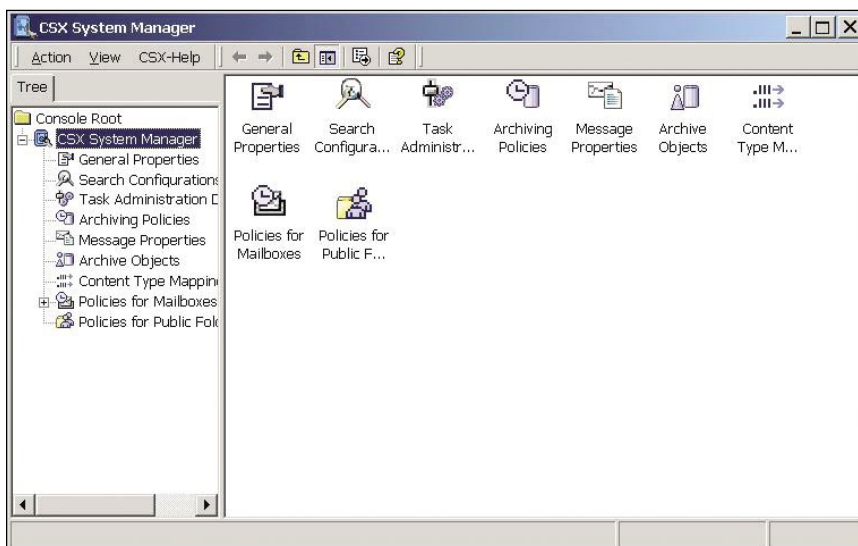
- **Controls growth of your corporate messaging system with automatic policy-driven or user-initiated archiving**
- **Provides easier migration from Microsoft Exchange 5.5 to Microsoft Exchange 2000 and 2003 Servers**
- **Manages e-mails, attachments, public folder and personal folder file (PST) content in back-end highly scalable archive management system**
- **Manages its lifecycle and reduces costs with storage on your choice of devices**
- **Delivers records management integration, supporting compliance with regulatory, legal and corporate standards for long-term information retention**
- **Shortens backup/restore and recovery windows, increasing operational and administrative efficiency**

### Manage the growth of your messaging system

With business increasingly transacted around the clock and in multiple locations, corporate e-mail traffic grows heavier every year.

However, the more information employees keep in their e-mail folders, the more time they must spend searching for a particular message or attached document. IT administrators, in turn, face constant demands for more disk space and associated overhead for backing up e-mail servers. In response, some companies set arbitrary storage limits, or ask users to store content locally, in PST files. However, such limits or local storage may result in the loss of valuable information, excessive file duplication and challenges in meeting compliance requirements.

IBM DB2® CommonStore for Exchange Server, Version 8.3 helps you solve these challenges with an integrated, electronic archiving solution for Microsoft Exchange 5.5, Microsoft Exchange 2000 and 2003 Servers.



IBM DB2 CommonStore for Exchange Server system manager brings ease of administration and use.

## Information management and archiving for the on demand world

DB2 CommonStore for Exchange Server seamlessly integrates with these messaging systems to offload messages, attachments and public folder content from the server or local PST files to a highly scalable IBM content management repository. It also provides easier migration from Exchange 5.5 to Exchange 2000 or 2003 Servers.

Once messages are archived, users can continue to easily and securely retrieve their e-mails and attachments directly from the Microsoft Outlook client or Outlook Web Access client—even years later. Locating pertinent details about past business transactions or answers to customers' questions requires only a few keystrokes.

### Protect your valuable business information

Without archiving, the volume of e-mails and attachments on your Exchange Server would become unmanageable. To keep within electronic storage limits, users would have to save messages on local disks in scattered PST files or else delete potentially useful business information. If storage limits aren't enforced, your company's storage costs escalate. In addition, with an ever-expanding Exchange Server, you face extended service intervals for backup/restore and recovery, increased replication time, and greater efforts for system administration, maintenance and system upgrades or consolidations.

DB2 CommonStore for Exchange Server archives e-mail and associated attachments externally—and transparently to the end user—for secure, long-term storage. Archived

messages can be viewed or restored, and their associated attachments can be called up through links embedded in the message. Millions of e-mails, attachments, public folder documents and PST file content can be stored on scalable and secure back-end archive management repositories that offer virtually unlimited growth and support the broadest range of storage options.

Because you can move older, inactive documents to an external archive, the size of your Exchange Server storage is reduced while providing virtually unlimited mailbox space to the end users, lowering system backup/restore and recovery times and associated maintenance costs and efforts.

DB2 CommonStore for Exchange Server allows convenient automated, rule-based archiving—for example, to store useful collections of shared information from Exchange public folders. It also lets users archive their e-mails interactively, which provides flexibility. These and other intelligent management functions within DB2 CommonStore for Exchange Server help improve employee productivity and customer service. They enable immediate access to essential documents, regardless of their location in your network, so you can answer questions quickly and efficiently.

*“DB2 CommonStore for Exchange Server enabled Standard Life to implement e-mail lifecycle management that meets the need to keep historical data while containing infrastructure growth and cost. The seamless automatic archiving to secondary storage provides employees with easy access to messages and attachments.”*

*—Louis Rodrigue, IT Architecture and Core Technology,  
Standard Life Group*

DB2 CommonStore for Exchange Server also adapts smoothly to heterogeneous content management environments. For centralized archive storage and administration, you can choose IBM DB2 Content Manager, DB2 Content Manager OnDemand or IBM Tivoli® Storage Manager supporting several robust, scalable and secure platforms.

### **Adhere to information retention rules and automate record-keeping**

Even though e-mails and electronic attachments mean freedom from paper, businesses still must demonstrate accountability for their actions. Therefore, electronic records have become just as important as paper trails. For example, some government regulations may require firms to retain copies of all customer e-mail on non-changeable media for specific periods of time.

DB2 CommonStore for Exchange Server can help businesses adhere to these and other legal requirements, without worrying about the burden of long-term storage on their messaging system servers. You can determine the archiving policies that automatically copy required documents into the appropriate repositories, cutting down on administrative costs.

With DB2 CommonStore, Version 8.3, IBM delivers new integration with IBM DB2 Records Manager, enabling you to declare e-mail messages and attachments as records while archiving them, either with end user based selection, drag and drop activity or fully automated without end user involvement. With this built-in integration, you can manage, retain and dispose of e-mails as records based on regulatory, legal and corporate requirements, improving operational efficiency while addressing compliance needs.

### **Tight and seamless integration with Microsoft Exchange Server**

Some of the major capabilities delivered with DB2 CommonStore for Exchange Server include:

- *Exchange 5.5, 2000, 2003 Server support can be leveraged for easier migration from Exchange 5.5 to Exchange 2000 or 2003 Server.*
- *More flexible archiving and retrieval functions, including automatic archiving of messages by age (delivery date as well as time of last modification), by mailbox size and by user groups and the ability to view or retrieve messages from an archive using a standard Web browser.*
- *Full text indexing capability from the Outlook client on attributes and the body of messages, with support for all types of attachments.*

- *Space-saving new deletion options, including moving the entire message from the mailbox to archival without leaving a retrieval stub behind, or deleting only a space-wasting attachment and replacing it with a retrieval URL.*
- *Leveraging Tivoli Storage Manager, DB2 CommonStore delivers enhanced storage support with more than 600-plus IBM or non-IBM devices to choose from, including IBM TotalStorage® Data Retention 550 systems, providing flexibility to deploy the most appropriate device, depending on the lifecycle value of the content.*
- *Support for Outlook client platforms, including Outlook 2000, 2002 and 2003.*
- *Use of Microsoft® Windows® services to automate tasks such as automatic start, lowering management costs.*
- *Enhanced security by using HTTPS protocol for secure transmission, by preventing browser caching that would otherwise retain and display proprietary company information to subsequent, unauthorized users.*
- *Reduced storage requirement by having the same messages archived once in the central archive repository with Single Instance Store and compressing the e-mails before storing them.*
- *With its open infrastructure, customers and business partners can develop custom code for specific additional archive requirements.*

## Part of a complete enterprise content management infrastructure

DB2 CommonStore for Exchange Server is part of the IBM content management portfolio. With support for open standards and the ability to leverage any of the IBM repositories—IBM DB2 Content Manager, IBM DB2 Content Manager OnDemand or IBM Tivoli Storage Manager—this function-rich tool empowers you to manage the full spectrum of digital information generated in today's on demand world. Used with other offerings in the IBM content management portfolio, DB2 CommonStore for Exchange Server can be part of an information integration and management strategy that fosters smart usage of your organization's content.

Combined with DB2 Content Manager or DB2 Content Manager OnDemand, DB2 CommonStore for Exchange Server is the ideal solution for e-mail archive management where access to archived content is required by applications other than the messaging system. The DB2 CommonStore archive for e-mail messages and documents can be accessed through Microsoft Exchange as well as through the DB2 Content Manager client or any other integrated application, thus making the archive available to any user or application.

The many Microsoft Exchange customers who are also SAP users will find that DB2 CommonStore for Exchange Server has an ideal partner with IBM DB2 CommonStore for SAP. A complementary solution for SAP Data and Document archival and management. DB2 CommonStore for SAP makes business documents available to users anywhere on your network. A similar solution, IBM DB2 CommonStore for Lotus® Domino®, supports Lotus Notes® users.

By combining the advantages of the Microsoft Outlook client with electronic archiving and other resources from the IBM content management portfolio, you can better manage your Microsoft Exchange Server environment. With DB2 CommonStore for Exchange Server, your enterprise's valuable information is quickly and readily accessible, enabling you to respond to the dynamic demands of your employees, customers, partners and suppliers.

### For more information

Please contact your IBM marketing representative or an IBM Business Partner, or call 1-800 IBM CALL within the U.S. Also, visit our Web site at:

**ibm.com/software/data/commonstore/exchange**



© Copyright IBM Corporation 2005

IBM Corporation  
Silicon Valley Laboratory  
555 Bailey Avenue  
San Jose, CA 95141  
U.S.A.

Printed in the United States of America  
03-05  
All Rights Reserved

DB2, Domino, IBM, the IBM logo, Lotus, Lotus Notes, Notes, the On Demand Business logo, Tivoli and TotalStorage are trademarks of International Business Machines Corporation in the United States, other countries or both.

Microsoft and Windows are registered trademarks of Microsoft Corporation in the United States, other countries or both.

SAP is a trademark of SAP AG in the United States, other countries or both.

Other company, product or service names may be trademarks or service marks of others.

References in this publication to IBM products or services do not imply that IBM intends to make them available in all countries in which IBM operates.

 Printed in the United States on recycled paper containing 10% recovered post-consumer fiber.



GC27-1476-03