

# IBM LotusLive™ iNotes

Accessing Critical Information, Anytime, Anywhere



With LotusLive iNotes, your business email doesn't have to be one size fits all.

Email remains a critical business tool in today's fast-paced global environment. However, providing enterprise-grade email and collaboration to everyone in the company can be costly with existing solutions. Now, there is a business ready alternative – LotusLive iNotes.

LotusLive iNotes is an online webmail service that features essential email, calendaring and contact capabilities, multi-level administration and branded interfaces. Delivered as a software-as-a-service (SaaS) solution for corporate users who do not need full-fledged collaboration, LotusLive iNotes can co-exist with your existing on-premise email solution or be operated as a standalone solution to reduce overall cost of ownership. It is quick and simple to deploy, making it a smart choice for companies and resellers of all sizes.

With LotusLive iNotes you can give users email services that make sense for their role or job function, without overwhelming them with unnecessary features. And with LotusLive iNotes' unique design everyone in your organization can still operate under a single domain using a shared corporate directory whether they sit in the corporate office or work out in the field.

Extending traditional email solutions to all employees can mean a costly investment in additional server hardware to support the large increase in users. And additional servers mean higher deployment, maintenance and administration costs.

LotusLive iNotes is ideal for corporate workers who don't currently have access to corporate email or

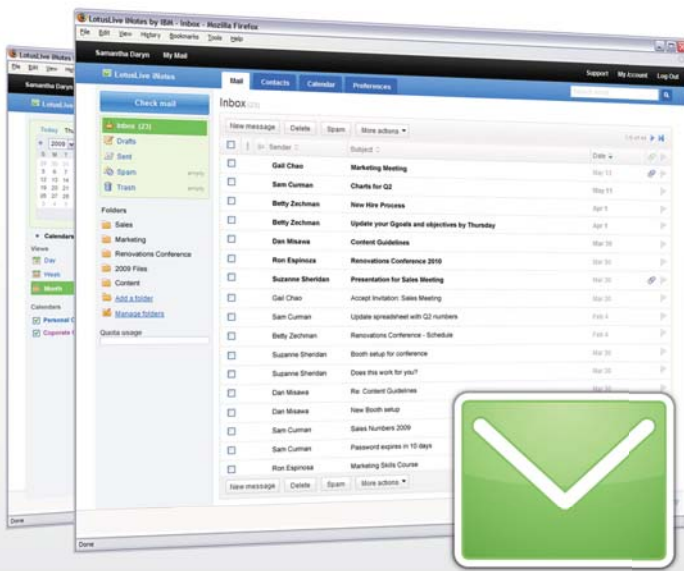
who are over-served by feature-rich collaboration capability that they don't use. Employees who need only basic email access to receive company updates, HR information and check schedules will benefit greatly from the simplicity and flexibility of LotusLive iNotes.

## With LotusLive iNotes, you can...

- **Send and receive emails** in a secure environment anytime from a web browser.
- **Work off-line**, using any POP or IMAP compatible email client.
- **Use the personal calendar** to organize professional and personal lives all in one convenient place in the cloud.
- **Distribute a company calendar** to all employees to keep everyone up-to-date on company events and meetings.
- **Keep track of personal contacts** and access the corporate directory and distribution lists.
- **Protect your inbox** with powerful anti-spam and virus protection that can be customized to your preferences.

## LotusLive iNotes Offers You:

- Low start-up and predictable monthly costs
- Simplified administration and fast implementation
- Secure transfer of mail between LotusLive iNotes and your existing mail platform



To learn more about how IBM's email services can help your business grow and save, contact us at  
**(800)-647-2815**  
 or visit  
[www.lotuslive.com/services/inotes](http://www.lotuslive.com/services/inotes)

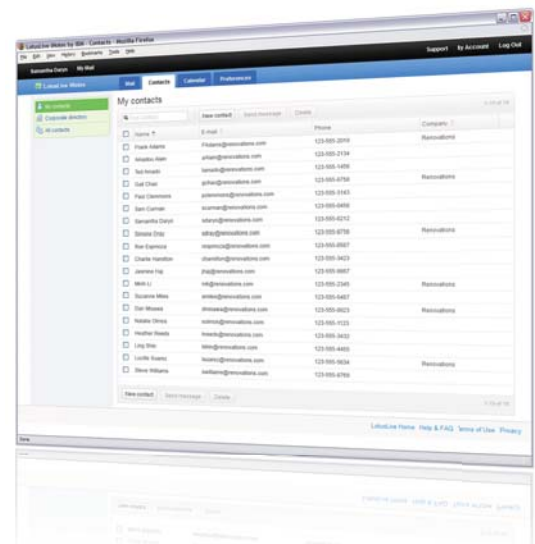
## LotusLive iNotes Features:

LotusLive iNotes gives you the best of both worlds. It simplifies e-mail administration for companies, but still offers robust, flexible services allowing administrators and end users to configure the service to meet their needs.

- Rich webmail experience, with drag and drop messages into folders, and tabs for multi-tasking.
- Webmail, POP3, IMAP4, Authenticated SMTP.
- Mobile Support with Auto-Updates via IMAP IDLE.
- SSL Encryption, secure password recovery.
- Personal address book for storing contacts and groups.
- Personal calendar that supports single events, reminders, and RSVP tracking.
- Mail forwarding.
- Standard reporting on mailbox utilization, number of logins, total number of mailboxes, and reliability provided.
- Administrative tools to manage user accounts and global settings.
- Industry leading spam and virus protection.

## IBM Quality and Reliability You Can Trust:

- Security, reliability and experience of IBM –Built for Business.
- Delivered by one of the world's largest private label messaging infrastructure providers.
- Proven reliability at high scale-the platform currently hosts millions of users across thousands of domains.
- Backed by IBM support and 24 x 7 monitoring



© Copyright IBM Corporation 2009

References in this publication to IBM products or services do not imply that IBM intends to make them available in all countries in which IBM operates. The information is provided "as is" without warranty of any kind, express or implied and is based on IBM's current product plans and strategy, which are subject to change by IBM without notice. IBM shall not be responsible for any damages arising out of the use of, or otherwise related to, this information. Nothing contained herein is intended to, nor shall have the effect of, creating any warranties or representations from IBM (or its suppliers or licensors), or altering the terms and conditions of the applicable agreement governing the use of IBM products or services.

IBM, the IBM logo, Lotus, and LotusLive are trademarks of International Business Machines Corporation in the United States, other countries, or both. Other company, product and service names may be trademarks or service marks of others.