



IBM SCORE

An architecture for a new generation
of document management systems

Juan Romano
IBM SWG Spain



Investments in Content Management are Driven by Four Principal Business Challenges

Increase Employee Productivity

Enhancing Workforce Effectiveness
*through collaboration, communication
and information sharing*

Enhance Business Processes

Transforming Business Processes
*through integration of content and automation of
related processes*

Address Risk and Compliance

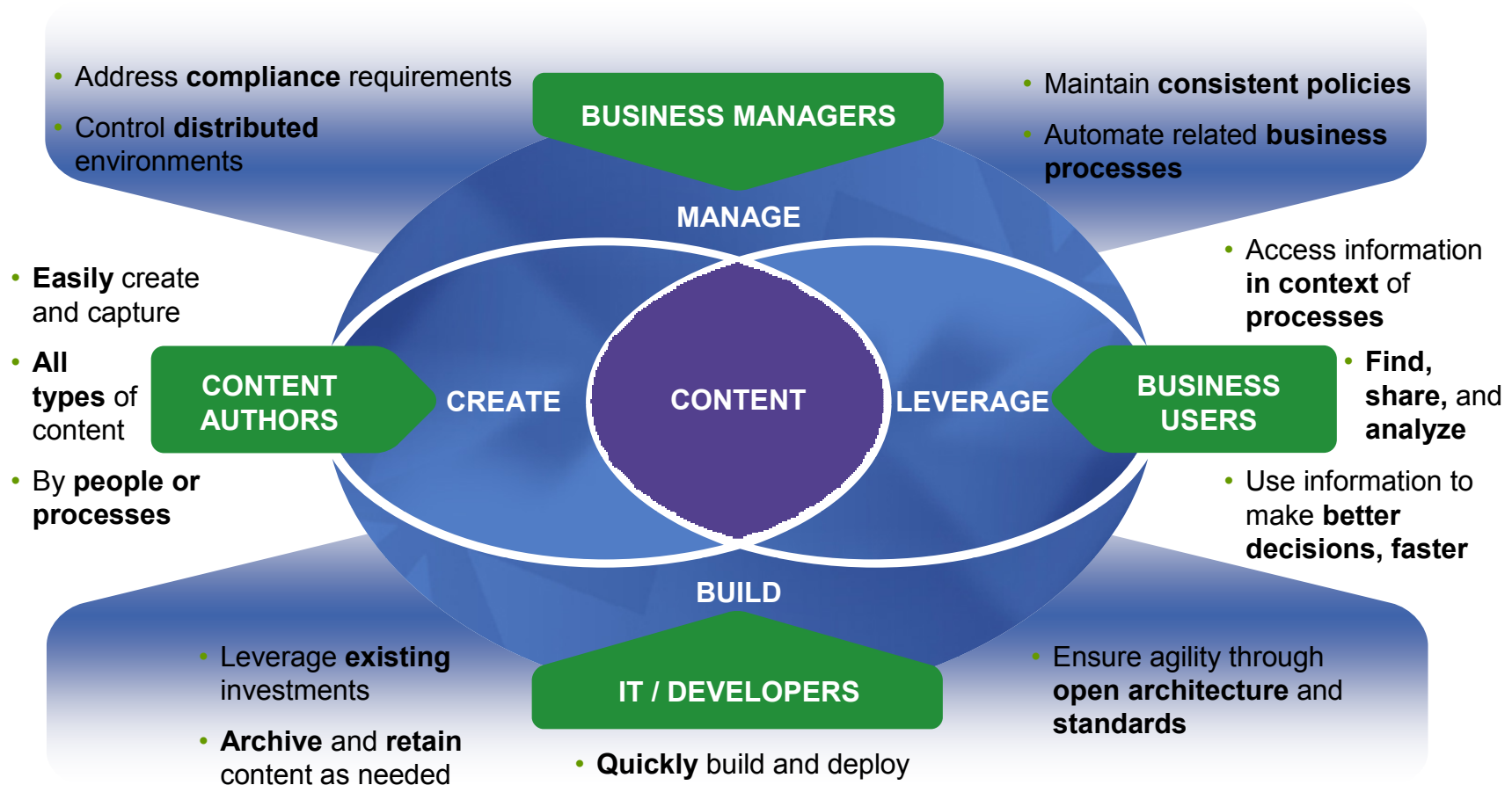
***Optimizing Infrastructure for
Content & Compliance***
*through capture, archiving, retention,
discovery and retrieval*

Improve Operational Efficiency



INNOVATIVE ORGANIZATIONS DRIVE GREATER VALUE FROM THEIR CONTENT

A broad spectrum of ECM capabilities required in 2007 to address the needs of 4 key groups of constituents



Top ECM Business Drivers are clear

Forrester:

- Compliance / Manage Unstructured Content
- Governance
- Process Efficiency

Gartner:

- Manage Unstructured Content / Compliance
- Automate Processes
- Increase Efficiency

IDC:

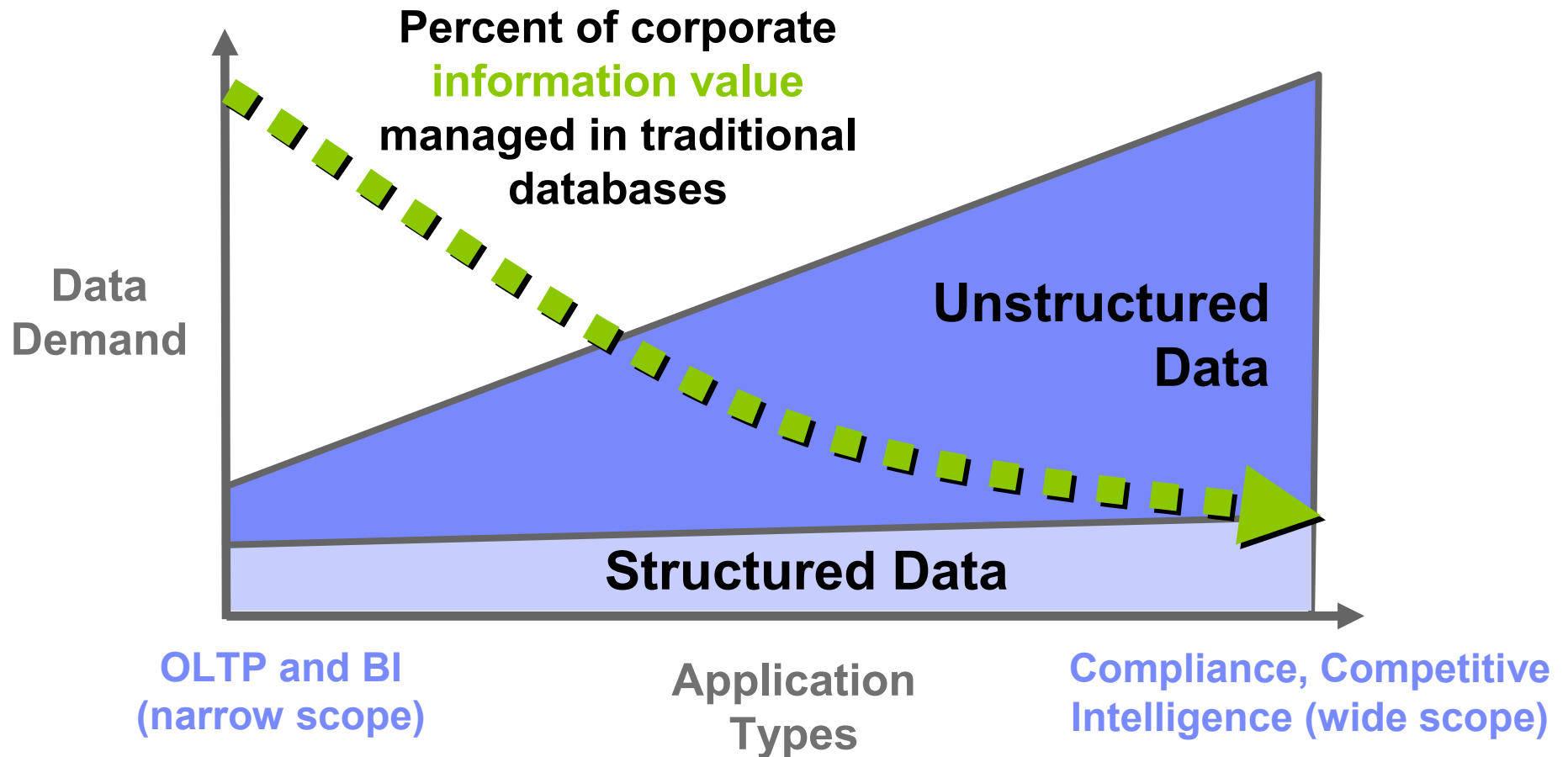
- Manage Content
- Compliance / Manage Risk
- Integrate Content with Business Process

Ovum:

- Manage Unstructured Content
- Efficiency / Service
- Govt. / Corp Governance

Sources: Forrester, Gartner, IDC, Ovum reports 2005-2006

Unstructured Information is Becoming the Dominant Information Type in Large Companies

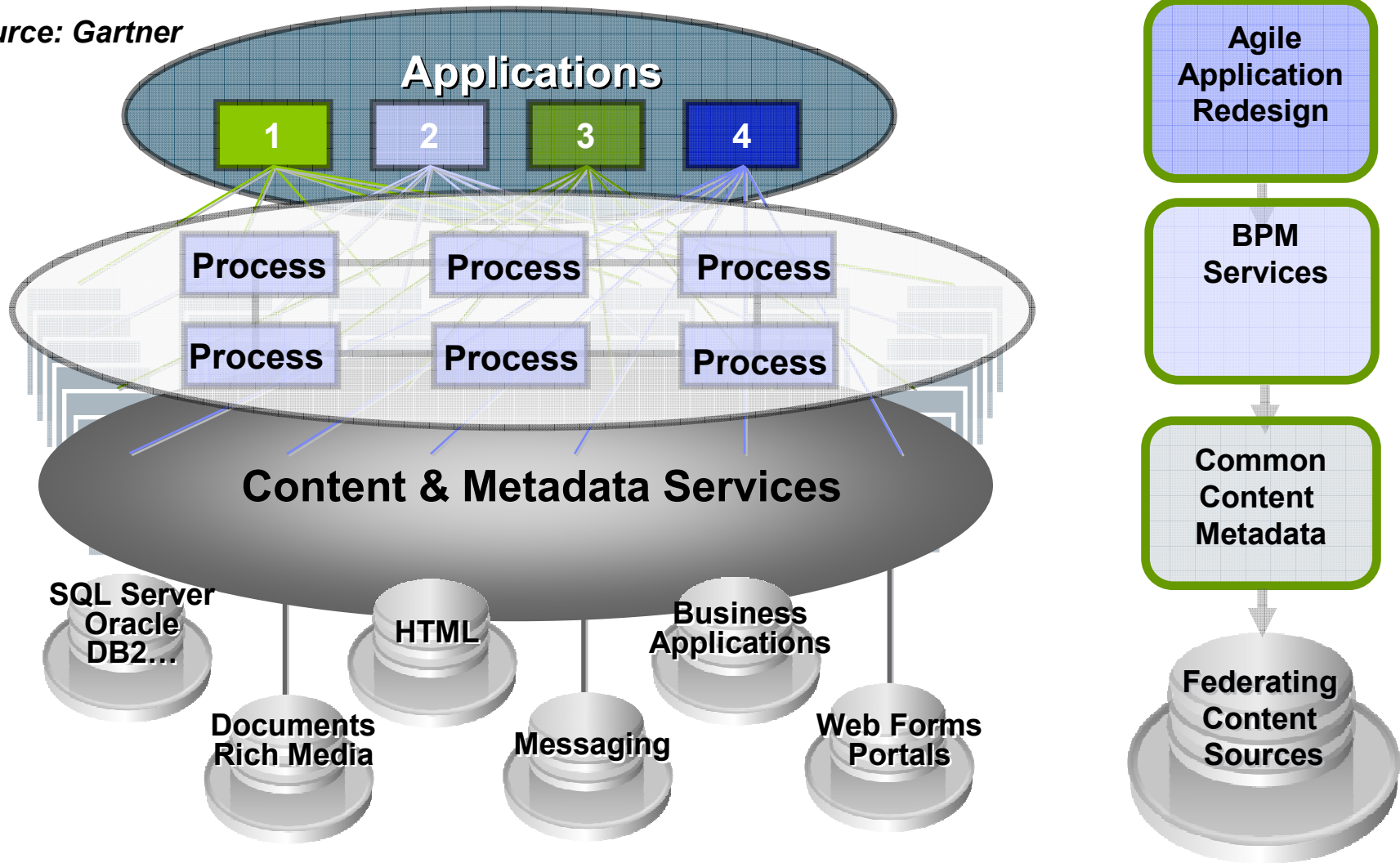


Source: Gartner

Organizations reuse Content in multiple processes

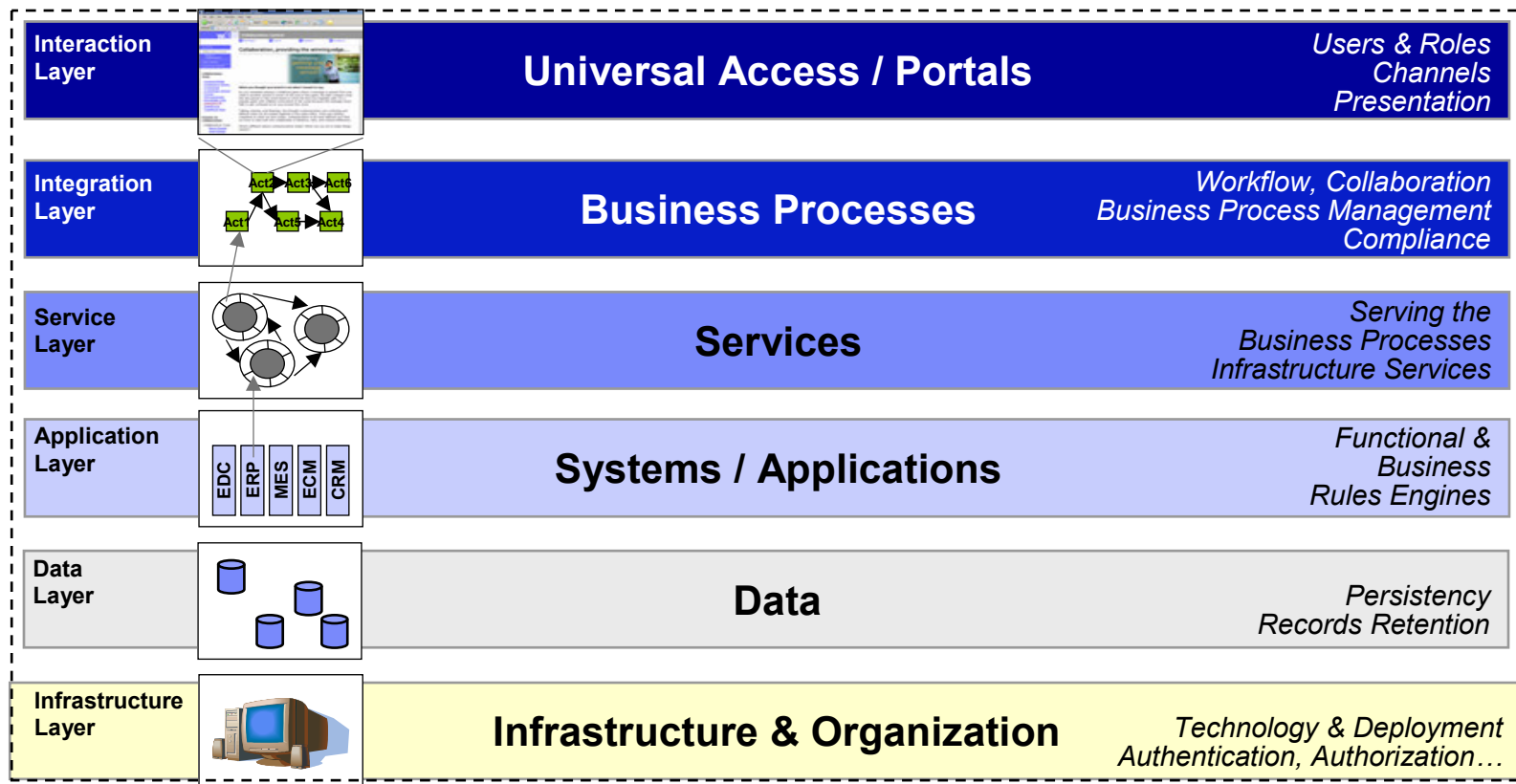
Integrated Content-centric BPM increases value

Source: Gartner

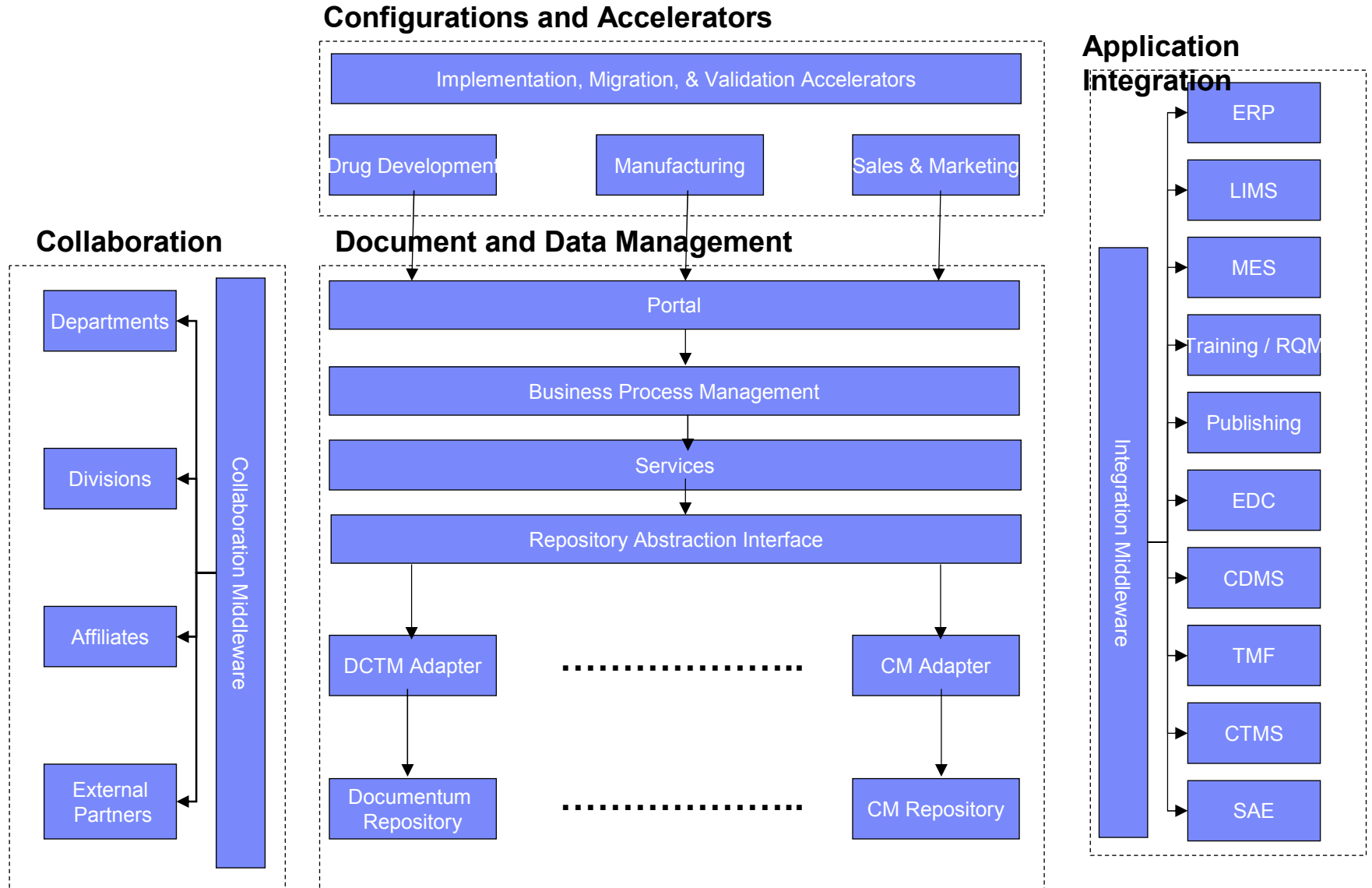


An Integrated Next Generation Architecture

- For compliance systems the technical architecture must support:
 - Interactions between documents, dossiers and other business systems
 - Structured and unstructured data information
 - Active and inactive states of the information



IBM SCORE Solution Architecture

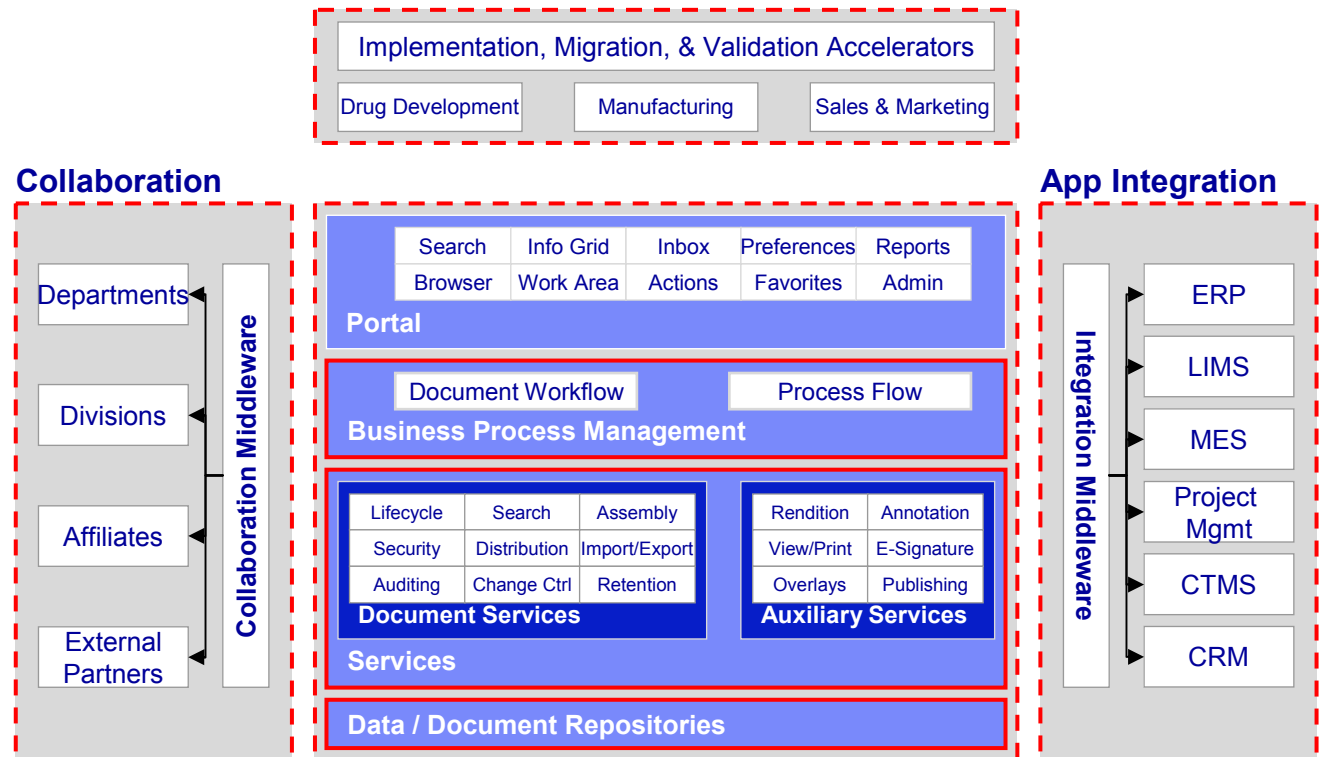


SCORE - Solution for Compliance in a Regulated Environment

Next Generation Compliance Architecture

Fundamental Capabilities

- ✓ Enterprise Document & Data Management
- ✓ Document / Data & Submissions Lifecycle Management
- ✓ Process, not content, centric workflow capabilities
- ✓ Fine grained, roles based security
- ✓ Compliant logging and auditing
- ✓ Open Standards



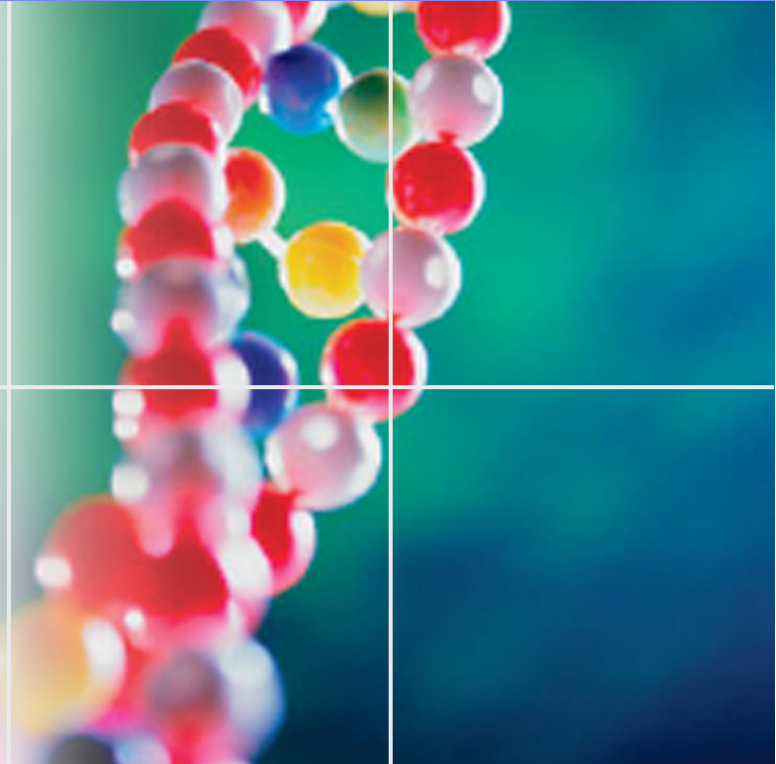
SCORE includes essential core functionality and provides a platform that simplifies **A**pplication integration, **B**usiness process management, **C**ollaboration, **D**ocument and **D**ata Management, and **E**CTD

IBM SCORE Product Vision

- To be the #1 regulated information management solution for the industry
- To provide differentiated end-to-end compliant lifecycle management
- To be the preferred industry platform for compliance



The IBM Commitment

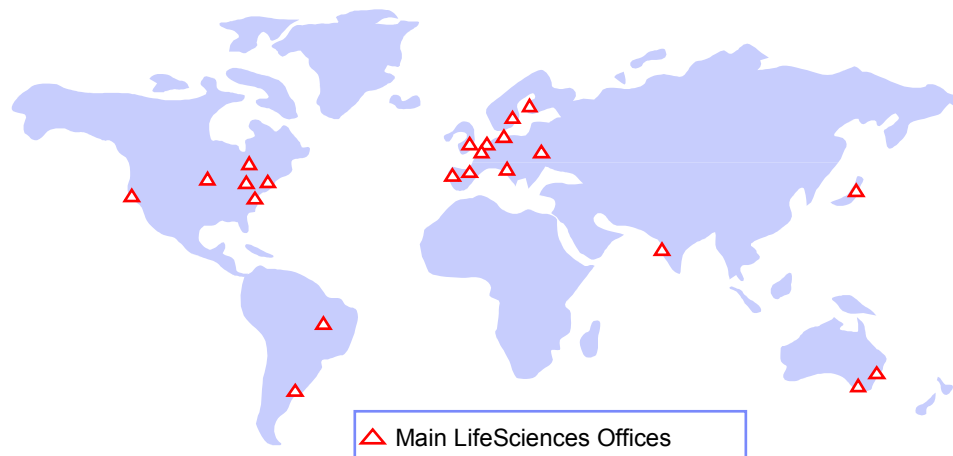


An overview of IBM Life Sciences

- IBM provides an unparalleled breadth and depth of consulting capabilities on a global basis, and access to deep solution delivery expertise.

Management support delivered by over 1,000 lifesciences consultants worldwide

Partnerships and alliances with major LS vendors including Oracle, Phase Forward, Documentum and Pharsight.

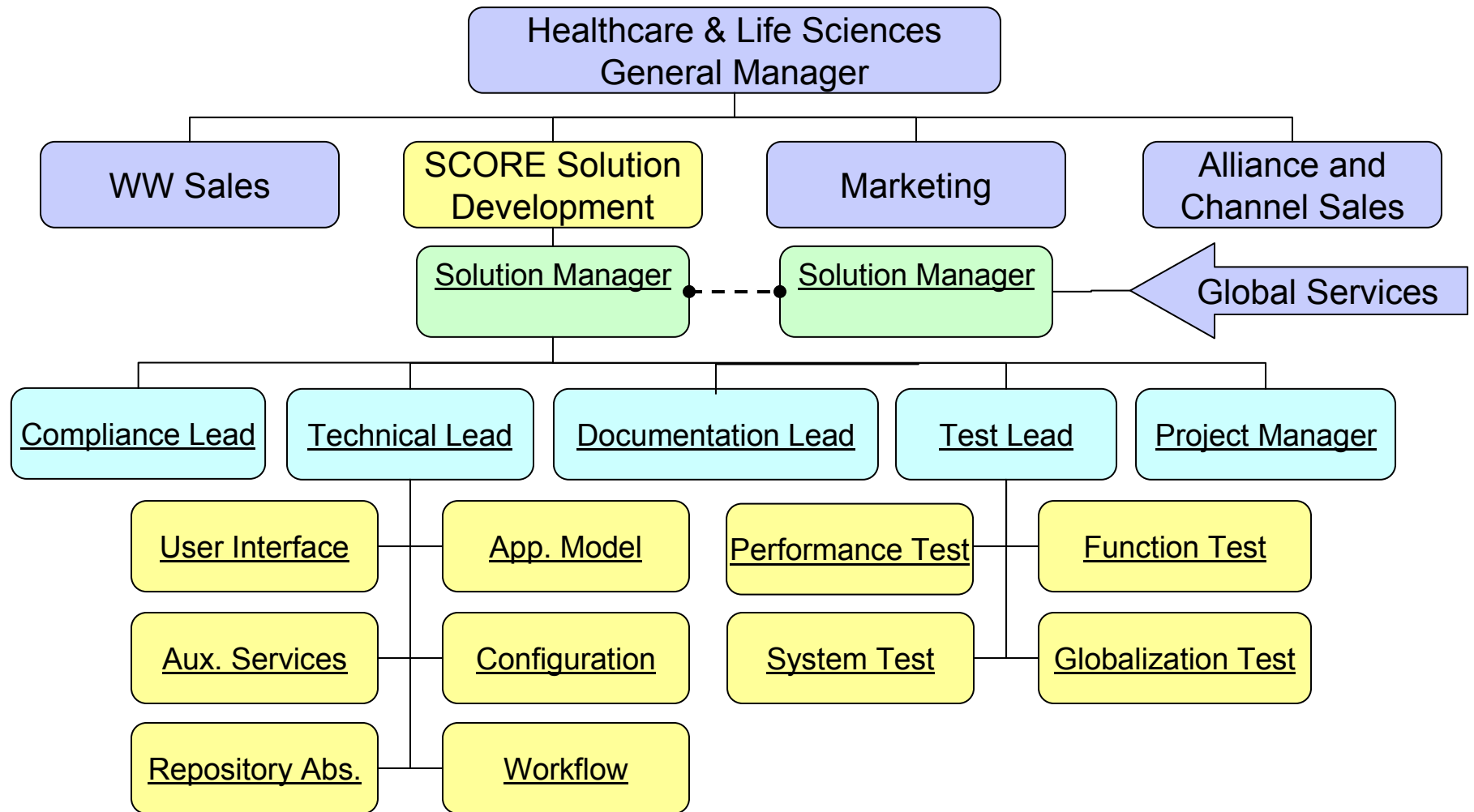


Over 750 client assignments conducted in the LS sector in the last seven years covering all areas of lifescience value chain

Consulting services delivered to 30 of the top 40 Western majors - more than any other professional services firm. Many of these relationships have existed for the past decade

- IBM has committed itself to the Pharma and the Life Sciences industry with a \$100million, multi year investment, dedicated to serving all aspects of Pharma, Biotech and Academia.
- IBM has performed comprehensive and highly acclaimed industry research:
 - "The *Pharma 2010 series...* (is) seen deservedly as one of the most cogent and sophisticated analyses of the industry to date." -- George Poste
 - *Pharma 2010: The Threshold of Innovation* recently launched.

SCORE Development



IBM Global Business Services - the Life Sciences Practice

IBM GBS' Global Life Sciences Consulting Practice is well known by all major agencies and acknowledged as the preferred partner in serving the life sciences industry.

- IBM GBS delivers services with over 1.000 dedicated life sciences consultants worldwide.
 - We conducted over 100 client assignments in the life sciences sector in the last year covering all areas of the value chain
- Solutions for the Life Sciences industry:
 - Discovery transformation/R&D services
 - Clinical transformation/Patient relationship
 - Customer Relationship Management consulting
 - Value Driven Compliance solution
 - IBM SCORE
- approx. 250 skilled Document Management Consultant

Where and how is SCORE used today

- IBM is unique in the breadth and depth of its relationship with document and content management solution providers for the Life Sciences and other industries
- 25+ customers on GXPharma
- Some of our References today:













Perrigo Israel Pharmaceuticals Ltd.
Formerly Agis




IBM SCORE Guiding Principles

- Product Direction driven by GBS Industry Points of View (e.g., Pharma 2010, Healthcare 2015)
- Enable Global Regulatory Capabilities
- Voice of the Customer is a key Building Block
- Cross Value Chain Support - Build Once, Use Many
- Leverage IBM Software Base Platform Investment (e.g., \$1B in Websphere)
- Embrace and drive Industry and Technical Standards

धन्यवाद

Hindi

多謝

Traditional Chinese

ขอบพระคุณ

Thai

Спасибо

Russian

Gracias

Spanish

شكراً

Arabic

Thank You

Obrigado

Brazilian Portuguese

Grazie

Italian

Danke

German

Merci

French

நன்றி

Tamil

多谢

Simplified Chinese

감사합니다

Korean

ありがとうございました

Japanese