

## Agenda IBM Rational Jazz Roadshow

**09:00** Collaborative ALM con IBM Jazz.

**09:30** Rational Team Concert: presentación técnica y demostración práctica

**10:45** Café

**11:15** Rational Quality Manager: presentación técnica y demostración práctica

**12:15** Planificación TI con Rational Focal Point.

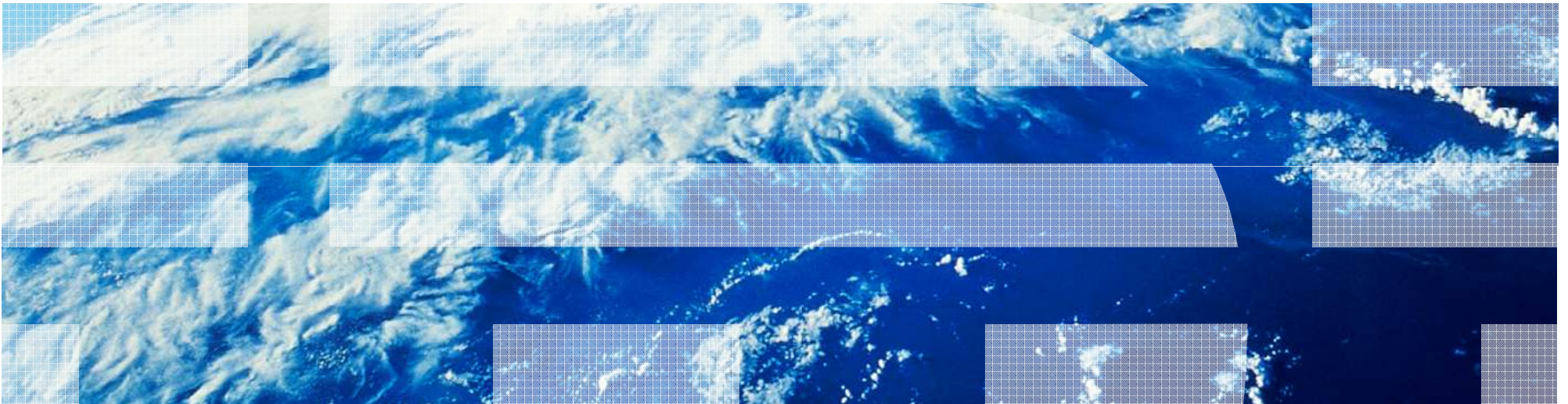
**13:00** Servicios de Testing Factory en INSA, Ingeniería de Software Avanzado

**13:45** Cóctel



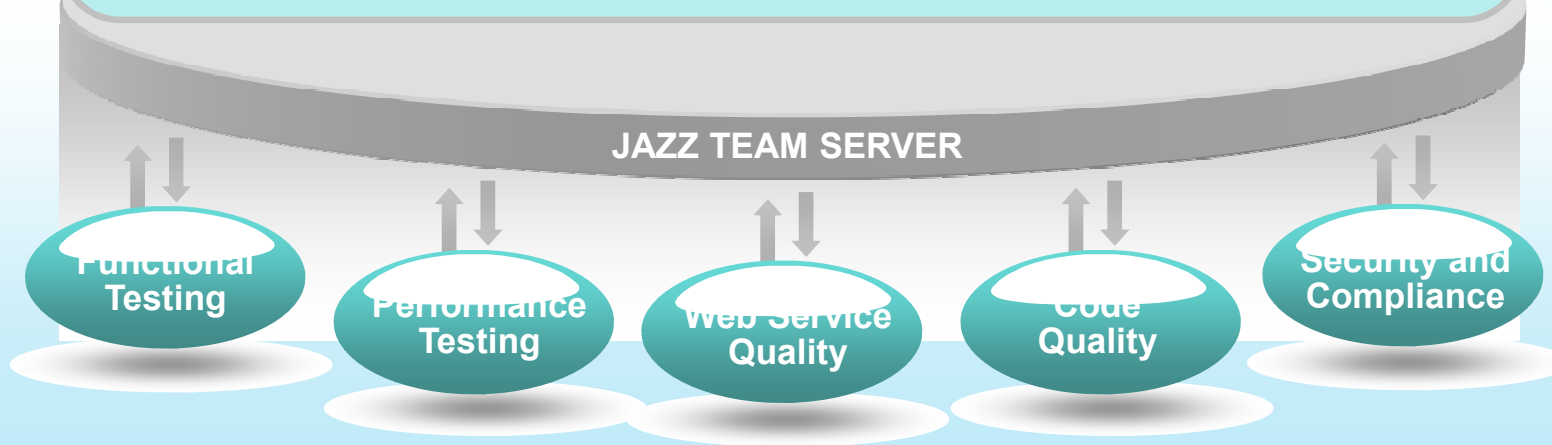
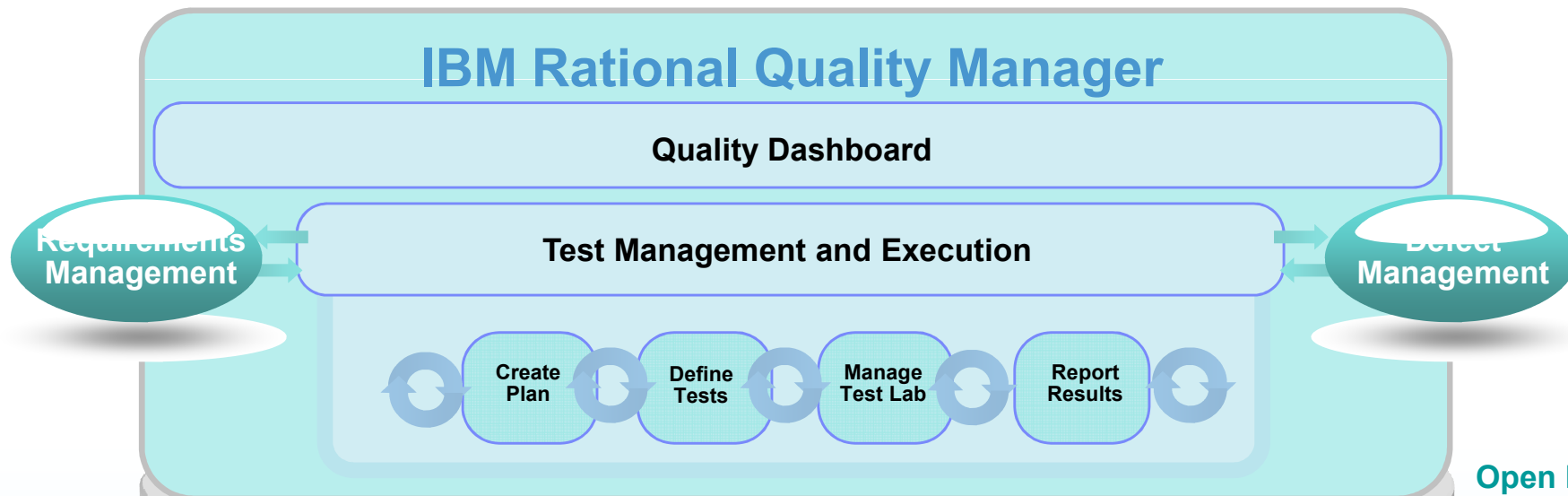
# IBM Rational Quality Manager

*Francisco López Minaya*  
[francisco.lopezminaya@es.ibm.com](mailto:francisco.lopezminaya@es.ibm.com)



# IBM Rational Quality Manager

IBM Rational platform to perform, manage and govern the testing process activities in your organization



Open Platform

Tivoli software

Microsoft

hp

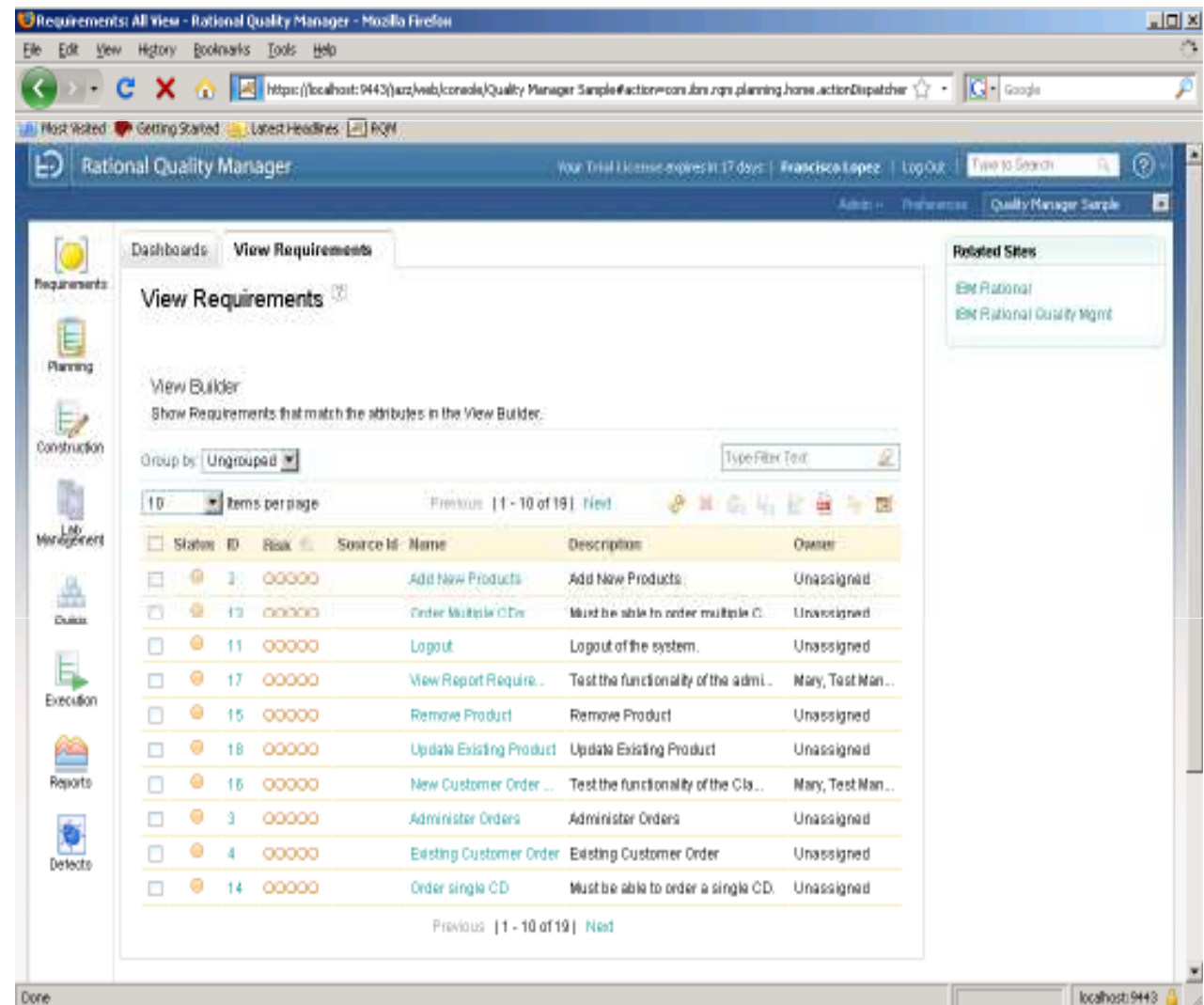
COMPUWARE

homegrown

# IBM Rational Quality Manager

## Requirements management

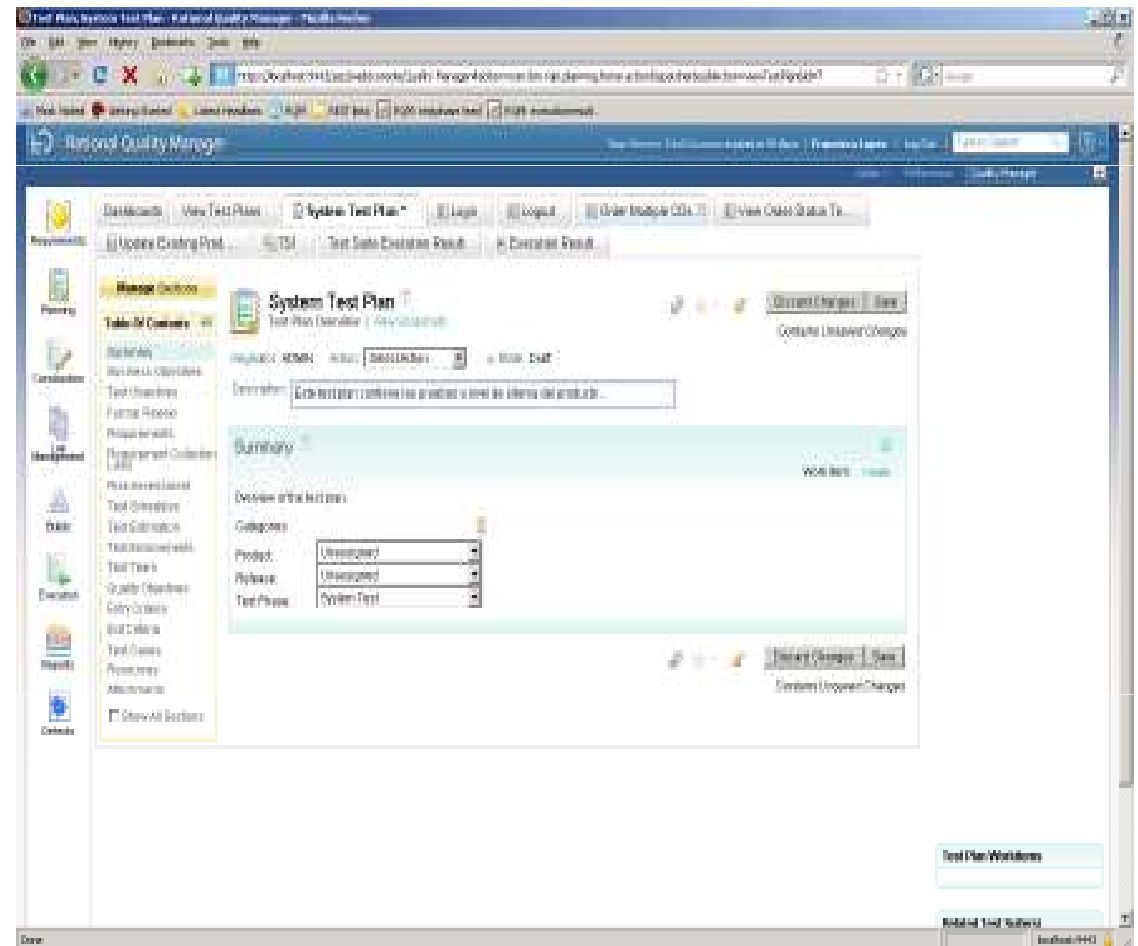
- Define and manage requirements within RQM
- Create requirements manually in RQM
- Import requirements from:
  - Rational RequisitePro
  - Rational DOORS
  - XML file
- Requirements included in test plans and associated to test cases. Requirements traceability and coverage reports
- Requirements approval/review workflow



# IBM Rational Quality Manager

## Test Plans Management

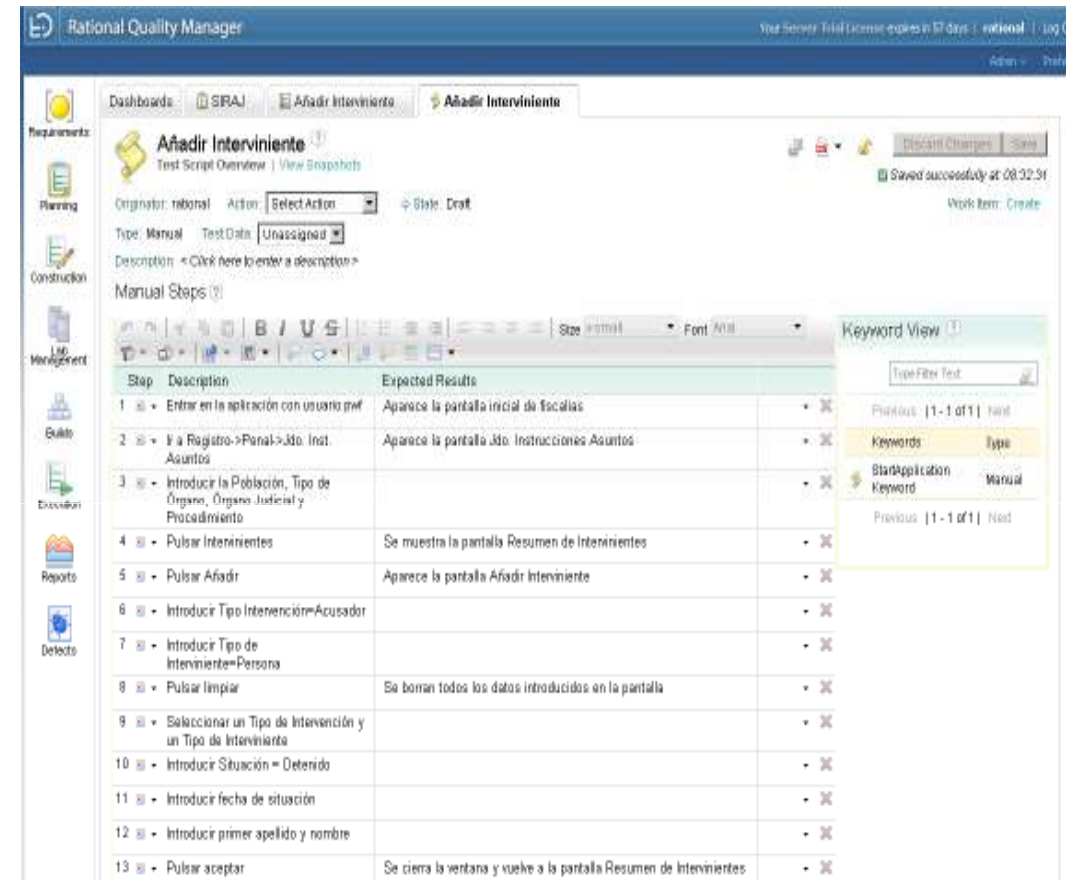
- Test plan defined and stored within RQM
- Establish a review and approval process for the test plan and for individual test cases
- Manage project requirements and test cases and establish the inter-dependencies between the two
- Define the schedule for each test iteration and track the dates of other important test activities
- List the various environments to be tested and generate test configurations
- Create a read-only snapshot of the test plan at a particular point in time
- Customizable test plan templates



# IBM Rational Quality Manager

## Test Cases Definition

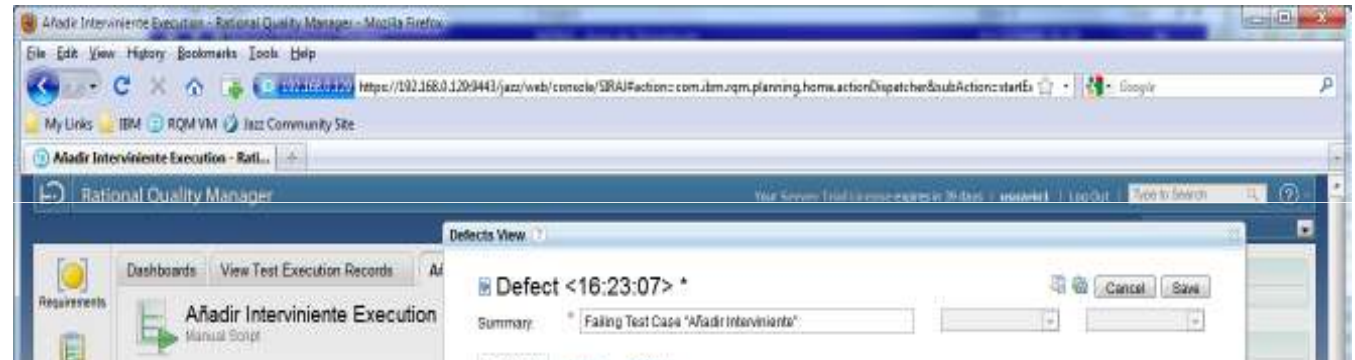
- Rational Quality Manager provides a full-featured manual test editor.
- You can add reuse and automation capabilities to your manual tests by using keywords.
- Two types of tests:
  - *Manual*: sequence of steps
  - *Automated*: reference to scripts created with:
    - Rational Functional Tester
    - Rational Performance Tester
    - Rational Service Tester for SOA Quality
    - Rational Software Analyzer
    - Rational AppScan Tester Edition
- Test cases reused in different test plans



# IBM Rational Quality Manager

## Defects management

- Defect tracking associated to test failed:
  - Defects management with RQM, or
  - Defects management with other tools: Rational Team Concert or Rational ClearQuest.



Script Steps

Step	Result	Description	Expected Results	Actual Results
1	✓	Entrar en la aplicación con usuario pwf	Aparece la pantalla inicial de fiscalías	
2	✓	Ir a Registro->Penal->Jdo. Inst. Asuntos	Aparece la pantalla Jdo. Instrucciones Asuntos	
3	✓	Introducir la Población, Tipo de Órgano, Órgano Judicial y Procedimiento		
4	✗	Pulsar Intervinientes	Se muestra la pantalla Resumen de Intervinientes	No se muestra la pantalla indicada
5		Pulsar Añadir	Aparece la pantalla Añadir Interviniente	



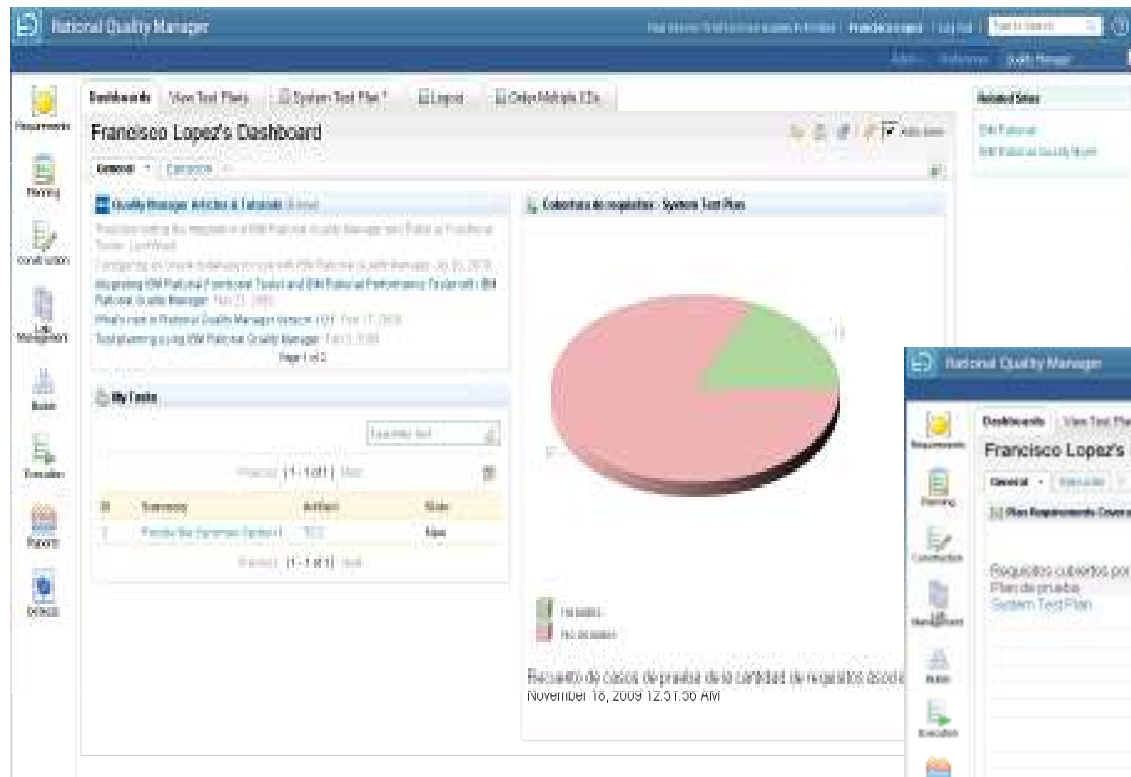
# IBM Rational Quality Manager

## Reporting

- RQM includes several **standard** and customizable test **reports** available through all phases of the test process. Helps you to evaluate and analyze test results.
  - Defects
  - Execution
  - Lab Manager
  - Requirements
  - Test cases
  - ...
- You can also install the **IBM Rational Reporting for Development Intelligence (RRDI)** tool to create custom reports that use powerful Cognos reporting technology.
- RQM reports and **dashboards** allows to test manager and project manager to control and govern the testing process
- **Rational Publishing Engine** integration to create formal, deliverable and more sophisticated documentation



# Report & Dashboard examples: test coverage and requirements traceability



**Francisco Lopez's Dashboard**

**Requisitos cubiertos por 100 casos de prueba**

Plan de prueba: System Test Plan

Identificador de requisito	Nombre de requisito	Caso de prueba
80	1130 System requirements	
85	1127 System requirements	Login
88	1124 System requirements	
87	1132 System requirements	
89	1135 System requirements	
91	1272 System requirements	
90	1137 System requirements	View Order Status Test Case
92	1140 System requirements	
93	1142 System requirements	
45	1045 System requirements	
44	1043 System requirements	Update Existing Product
46	1047 System requirements	
48	1051 System requirements	
47	1049 System requirements	
49	1053 System requirements	
50	1055 System requirements	Update Existing Product
50	1055 System requirements	View Order Status Test Case
51	1057 System requirements	Login
51	1057 System requirements	Login
52	1059 System requirements	
53	1062 System requirements	

# Report examples

- Detailed report on test cases execution
- Execution result distribution
- List of new defects
- Execution status by test plan

The screenshot displays the Rational Quality Manager interface with several key components:

- Top Panel:** "rational's Panel de instrumentos" with navigation tabs for "Pruebas No. 24", "Proyectos Multiplicados", "Proyectos Puntos de Regreso", and "Informe 002".
- Left Sidebar:** A vertical menu with icons for "Requisitos", "Pruebas", "Defectos", "Cobertura", "Control de Calidad", "Comentarios", "Descripción", "Historial", and "Defectos".
- Main Content Area:**
  - Left Column:** "Cargando Reporte Ejecución: MyTest1" showing a table of test case execution results.
 

Prueba	Plan de Pruebas	Resultado obtenido	Causa de Prueba	Fecha de ejecución
MyTest1-001	MyTest1-001	Exitosa	MyTest1-001-001: Datos con Atributos correctos	Nov 29, 2009 1:12:07 PM
MyTest1-002	MyTest1-001	Exitosa	MyTest1-002: Datos con Atributos correctos	Nov 29, 2009 1:12:09 PM
MyTest1-003	MyTest1-001	Exitosa	MyTest1-003: Datos con Atributos correctos	Nov 29, 2009 1:12:11 PM
MyTest1-004	MyTest1-001	Exitosa	MyTest1-004: Datos con Atributos correctos	Nov 29, 2009 1:12:13 PM
MyTest1-005	MyTest1-001	Exitosa	MyTest1-005: Datos con Atributos correctos	Nov 29, 2009 1:12:15 PM
MyTest1-006	MyTest1-001	Exitosa	MyTest1-006: Datos con Atributos correctos	Nov 29, 2009 1:12:17 PM
MyTest1-007	MyTest1-001	Exitosa	MyTest1-007: Datos con Atributos correctos	Nov 29, 2009 1:12:19 PM
MyTest1-008	MyTest1-001	Exitosa	MyTest1-008: Datos con Atributos correctos	Nov 29, 2009 1:12:21 PM
MyTest1-009	MyTest1-001	Exitosa	MyTest1-009: Datos con Atributos correctos	Nov 29, 2009 1:12:23 PM
MyTest1-010	MyTest1-001	Exitosa	MyTest1-010: Datos con Atributos correctos	Nov 29, 2009 1:12:25 PM
  - Right Column:** "Resumen Estadístico (Ejecución: MyTest1)" showing a pie chart titled "Distribución de Resultados del Plan de Pruebas". The legend indicates categories: "En Curso", "Exitosa", "Fallada", "Pendiente de ejecución", and "Suspendida".
- Bottom Panel:** "Rational Quality Manager" showing "Francisco Lopez's Dashboard".
  - Lista de defectos:** A table listing defects with columns for "Defecto", "Fecha de creación del defecto", "Estado del defecto", "Estatus del defecto", "Prioridad del defecto", "Fecha de inicio", "Fecha de cierre", and "Plan de prueba".
  - Execution Status by Test Plan:** A horizontal bar chart titled "Ejecución Status según TP-Cuent" showing the count of test cases (Recuento de TER) for different execution statuses: "En Curso", "Exitosa", "Fallada", "Pendiente de ejecución", and "Suspendida".

# Demostración práctica: IBM Rational Quality Manager





**Francisco J. López Minaya**  
***Rational Technical Solution Architect***  
**[francisco.lopezminaya@es.ibm.com](mailto:francisco.lopezminaya@es.ibm.com)**

© Copyright IBM Corporation 2008. All rights reserved. The information contained in these materials is provided for informational purposes only, and is provided AS IS without warranty of any kind, express or implied. IBM shall not be responsible for any damages arising out of the use of, or otherwise related to, these materials. Nothing contained in these materials is intended to, nor shall have the effect of, creating any warranties or representations from IBM or its suppliers or licensors, or altering the terms and conditions of the applicable license agreement governing the use of IBM software. References in these materials to IBM products, programs, or services do not imply that they will be available in all countries in which IBM operates. Product release dates and/or capabilities referenced in these materials may change at any time at IBM's sole discretion based on market opportunities or other factors, and are not intended to be a commitment to future product or feature availability in any way. IBM, the IBM logo, Rational, the Rational logo, Telelogic, the Telelogic logo, and other IBM products and services are trademarks of the International Business Machines Corporation, in the United States, other countries or both. Other company, product, or service names may be trademarks or service marks of others.