

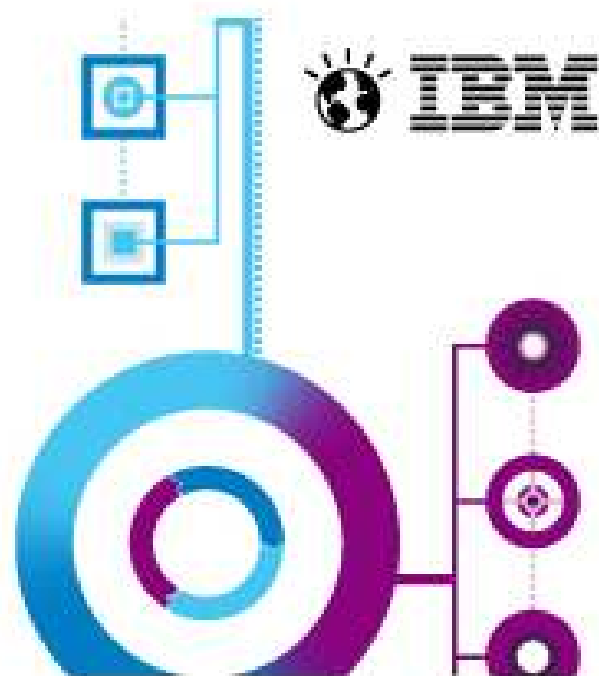
# Desarrollo de software en época de crisis

**21 de febrero de 2013**

Torre Espacio

Paseo de la Castellán, 259 D – Planta 18

Madrid



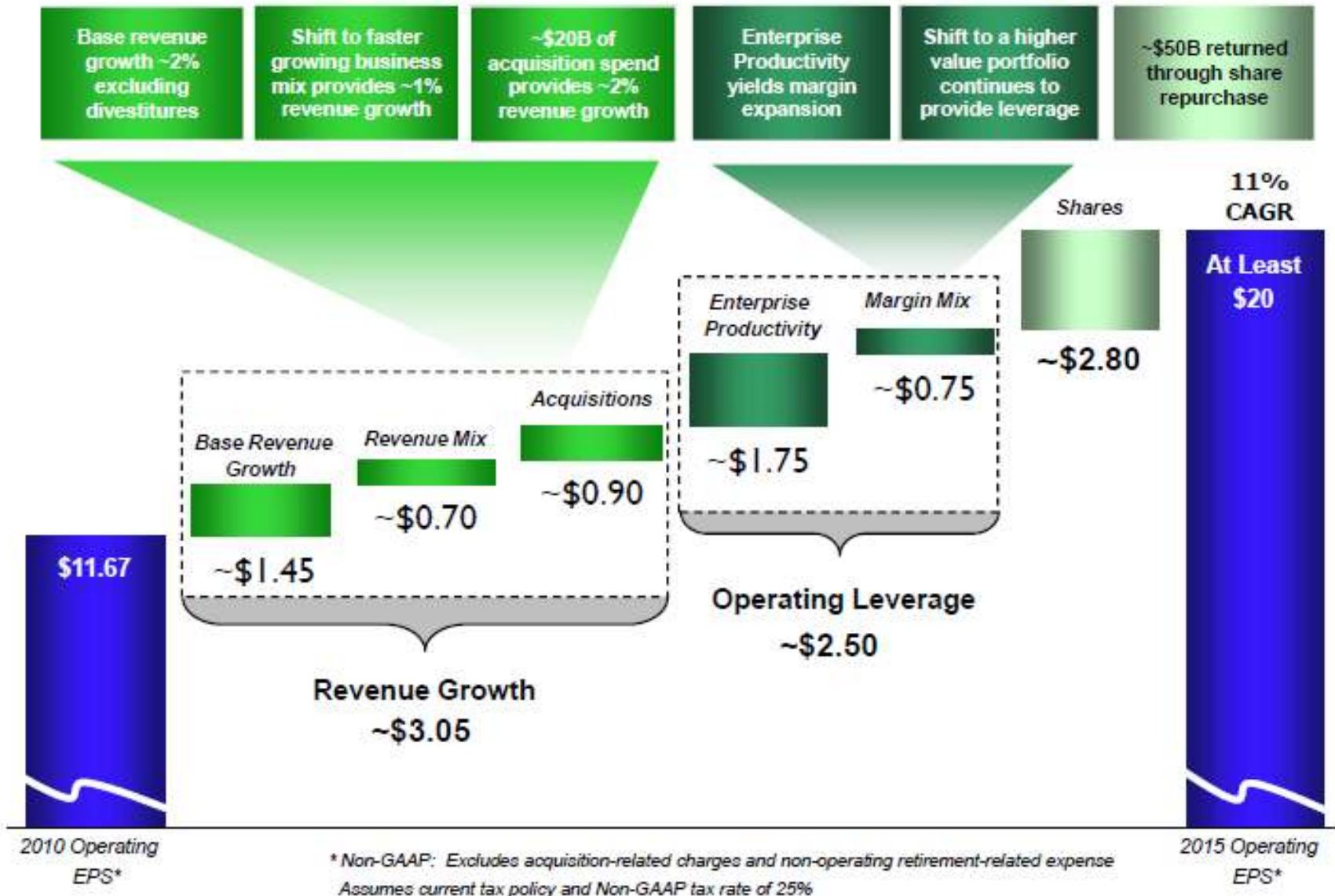
## Agenda

- **09:00 Recepción y café de bienvenida**
- **09:30 Introducción**  
Etienne Bertrand, Director de Soluciones de Software Supply Chain, IBM
- **09:45 Casos prácticos ROI**
- **10:15 Demostración en entono cloud**  
Sonia Batanero, Directora Técnica de Software Supply Chain, IBM
- **10:45 ALM en el Corte Inglés**  
Jesús Hernando, Responsable de Ingeniería de Software, El Corte Inglés 
- **11:15 Pausa para café**  
**11:45 El salto a la tercera plataforma y sus implicaciones en el desarrollo de software**  
Fernando Maldonado, Research Manager, IDC 
- **12:15 Requirements Management & Verification in Fusion For Energy with DOORS & IRDRMFAO (ponencia en inglés)**  
Ivan Bénilan, Requirements Management & Verification Manager, Fusion For Energy



- **12:45 Conclusiones**
- **13:00 Cóctel**

## IBM's 2015 Roadmap: at least \$20 of Operating EPS

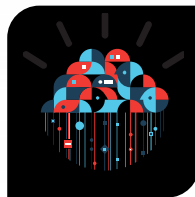


# Common answers for diverse needs

Seize new marketplace opportunities on a smarter planet



Smarter analytics



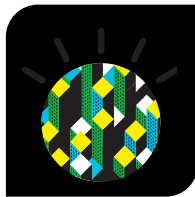
Cloud and IT optimization



Social business



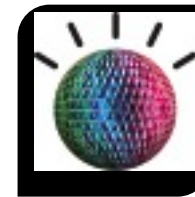
Security



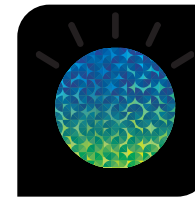
Smarter cities



Product and service innovation



Business agility and mobility



Smarter commerce

IBM software helps you do it.

# A transformed software portfolio

IBM meets clients' business and IT needs by industry and role

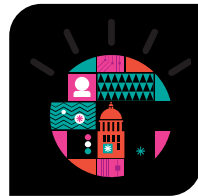
Industries



Banking



Energy



Government



Healthcare



Education



Transportation



Retail



Communications

Functions/roles



Marketing  
CMO



Finance  
CFO



Human resources  
CHRO



Supply chain  
CSCO



Executive  
CEO



IT  
CIO

Business and IT needs

## CEO Study 2012



# Liderar en un mundo hiperconectado

Conclusiones de  
"The Global Chief Executive  
Officer Study"



**CEO Study 2012**

**64 países 18 industrias**

**1700 CEO**

- **Personas que llevan mas de 6 años de media en su puesto**

## CEO Study 2012 conclusiones

Potenciar al empleado a través de los valores



Gestionar la relación con el cliente de forma individualizada

Fomentar la innovación colaborativa

**71 % de los CEO piensan que hay que potenciar al empleado a través de los valores es la prioridad n°1**

**73% de los CEO piensan que hay que gestionar la relación con el cliente de forma individualizada**

- ⊕ Mecanismos para interactuar con los clientes
  - Presencial de 75% hoy a 65% de 3 a 5 años
  - Redes sociales de 23% a 67%

**74% Fomentar la innovación colaborativa**

- Asociarse de manera intensiva con otras organizaciones

# Especializarse en lo que importa

Los CEO dicen que deben exhibir:

## 61%

Obsesión por el cliente

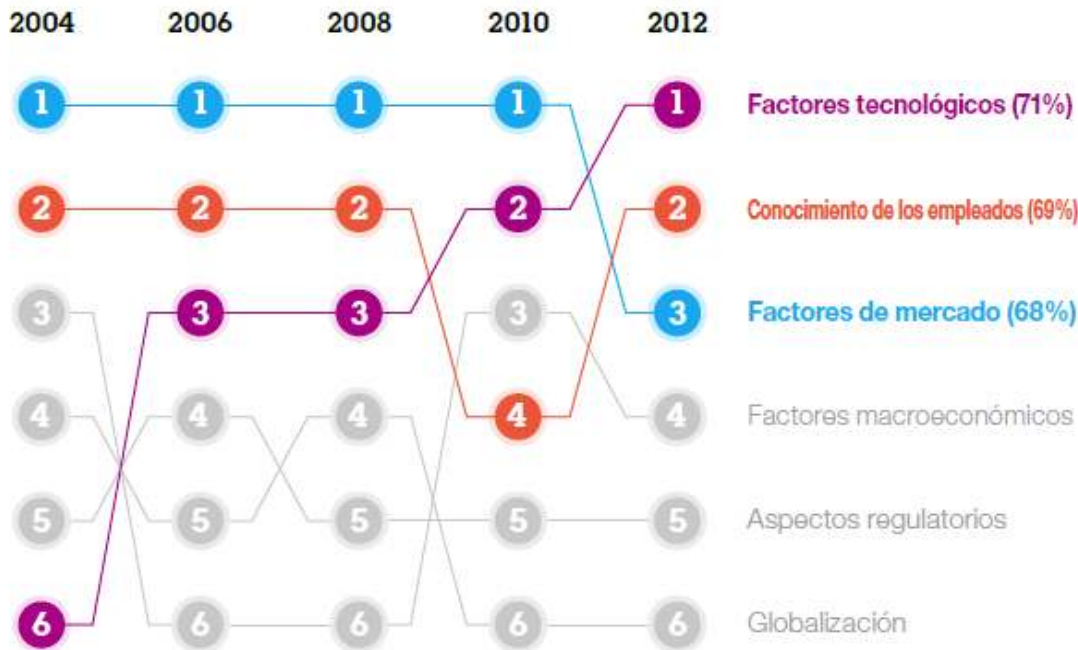
## 60%

Liderazgo inspiracional

## 58%

Liderazgo en equipo

## CEO Study 2012 conclusiones



**Figura 1**

**La tecnología sube al primer puesto.** De todas las fuerzas externas que podrían afectar a sus organizaciones en los próximos tres a cinco años, los CEO consideran que el cambio tecnológico es la más crítica.



Organizations who effectively leverage software delivery outperform their competitors... *yet few are able to execute effectively*

***The importance of software development:***

**54**

**%**

**believe it's critical**

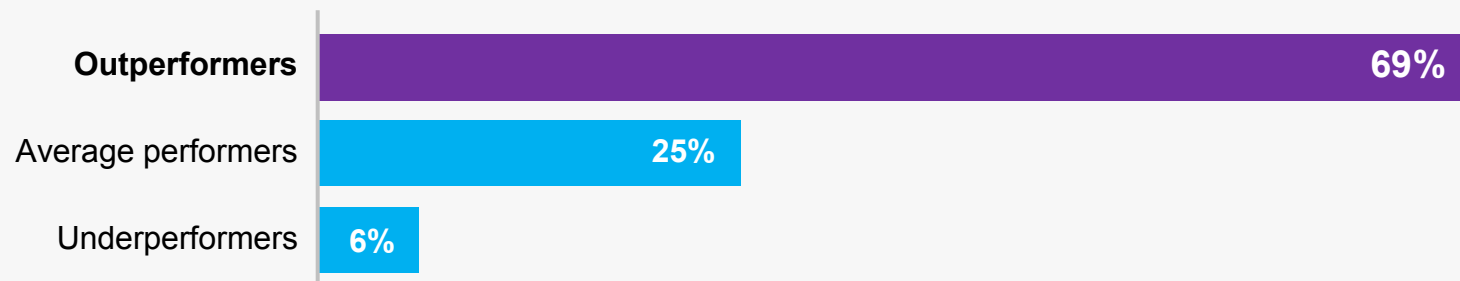
***But only...***

**25**

**%**

**leverage it effectively today**

***Those who leverage it effectively outperform those who don't***



Source: IBV Study 2012.

# Software Supply Chain: los retos

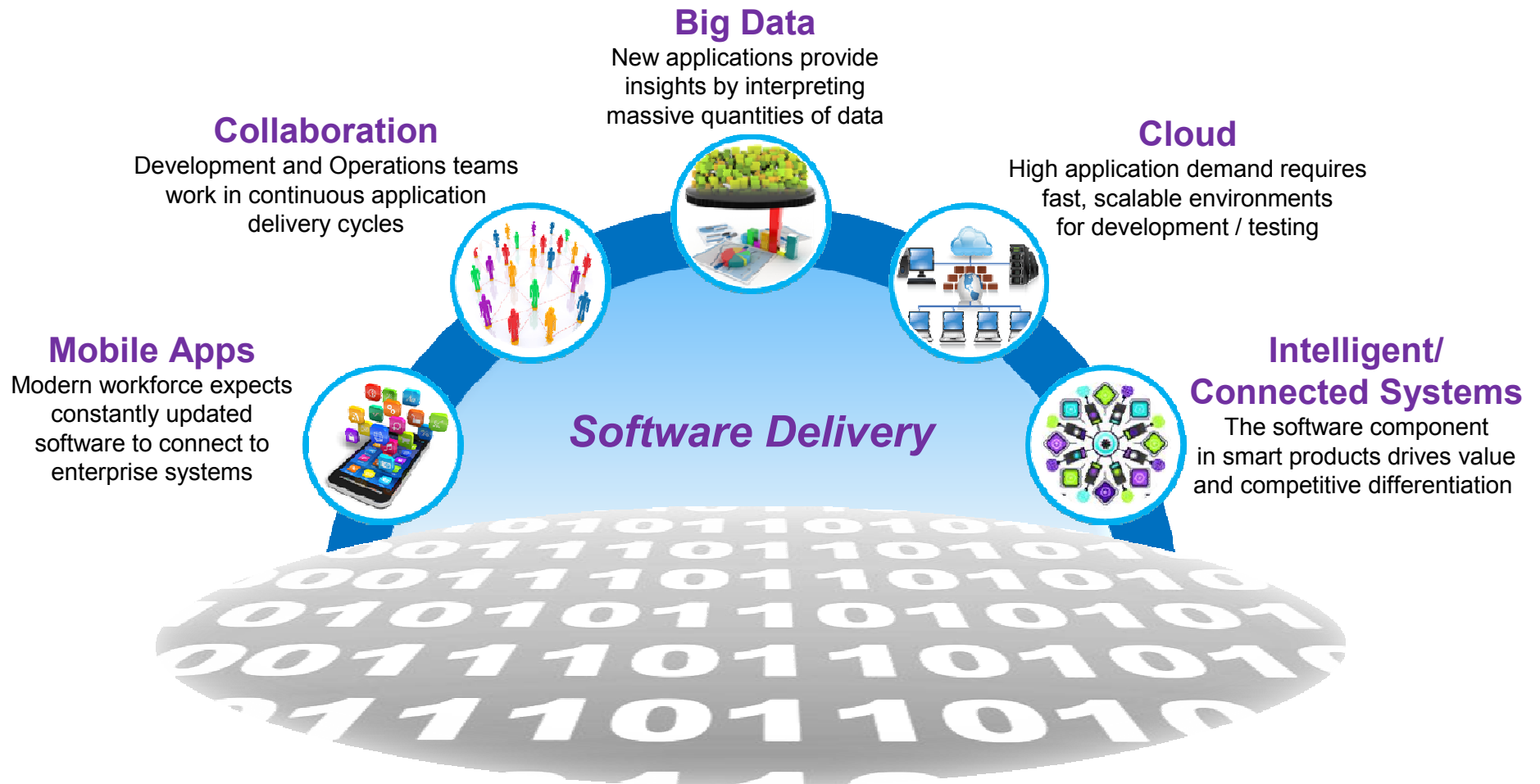
The world is becoming more connected and complex at every level  
*Economic uncertainty adds to the complexity*

- **EVERYTHING** relies on software
- **EVERYONE** wants customizations
- **ANYONE** can participate
- **EVERYBODY** wants access **EVERYWHERE, ANYTIME**



*We must accelerate cost-effective delivery with innovation and quality*

## Software delivery is at the heart of today's top technology trends

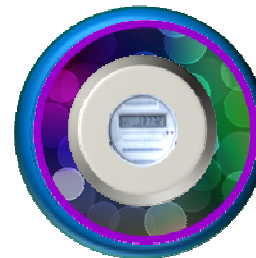


## The next generation of smarter products



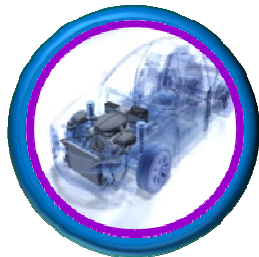
### Aerospace and Defense

Today's F35 has 10 million lines of code on board, twice the amount on the F-22, another stealth fighter.<sup>1</sup>



### Energy and Utilities

Smart meters for water utilities will lead to \$29.9 million in sales by 2017 compared with \$10.3 million in 2011.<sup>4</sup>



### Automotive

Electronics drives 80 percent of the automotive industry's functional innovation—software is the key to most of it.<sup>2</sup>



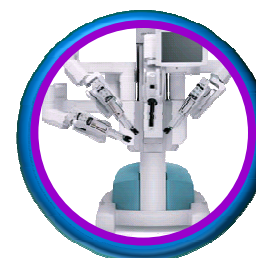
### Telecom

Between 2012 - 2016, mobile data traffic will multiply tenfold, with video content acting as the biggest driver.<sup>5</sup>



### Electronics

By 2014, 230 million Smart TVs will be installed with 57 million homes watching web-based streams over broadband.<sup>3</sup>



### Medical Devices

The da Vinci S surgical robotic system:

- 1.4 million lines of code
- Computing power of 7 laptops
- 10,000 individual parts<sup>6</sup>

<sup>1</sup>The Australian Software Acquisition Management Course, Defense Systems Management College, March 2000.

<sup>2</sup>Jürgen Mössinger (2010), *Software in Automotive Systems*, IEEE Software, March/April 2010.

<sup>3</sup>[http://www.uievolution.com/mobileconnect/Mobile\\_Connect\\_June\\_2011.pdf](http://www.uievolution.com/mobileconnect/Mobile_Connect_June_2011.pdf)

<sup>4</sup><http://www.ecoseed.org/business/us/12199-smart-meters-for-water-utilities-valued-at-29-9-million-by-2017>

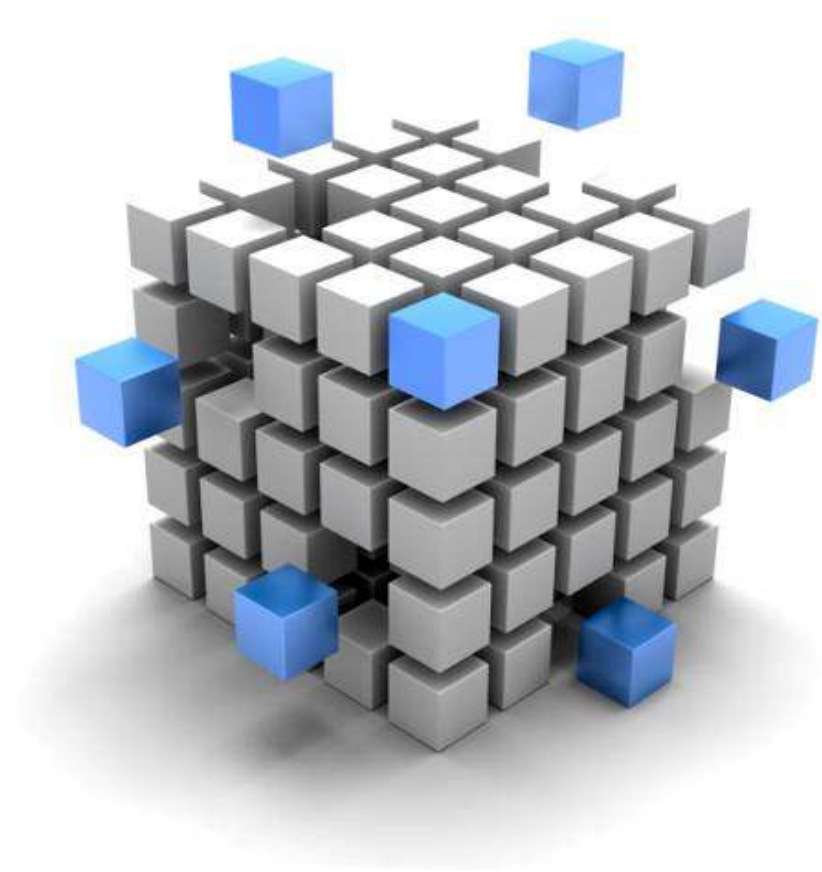
<sup>5</sup>[http://www-05.ibm.com/de/events/innovate/pdf/Conquer-complexity\\_Crisp-Schedl.pdf](http://www-05.ibm.com/de/events/innovate/pdf/Conquer-complexity_Crisp-Schedl.pdf)

<sup>6</sup> <http://surqrob.blogspot.com/2009/02/da-vinci-s-robot-2.html>

## The nemesis of product innovation is complexity

*Complexity increases overhead*

- Organizations are faced with increasingly difficult problems to solve
  - The **explosion in software** creates opportunities to innovate faster but quality must be preserved
  - Products and systems require **multiple engineering disciplines** to collaborate
  - Smarter products are part of a larger, even more **complex system of systems**
- Addressing these challenges requires
  - **Integrating** lifecycle data
  - **Collaborating** across disciplines
  - **Optimizing** decisions



## Continuous delivery: *Customer and market drivers*

### ***Significant pressure on business to:***

- Integrate with transactional systems  
- *Systems of Record*
- Innovate to create new business value by employing cloud, mobile and social channels and leveraging big data  
- *Systems of Engagement*
- Balancing speed, risk and cost while achieving compliance

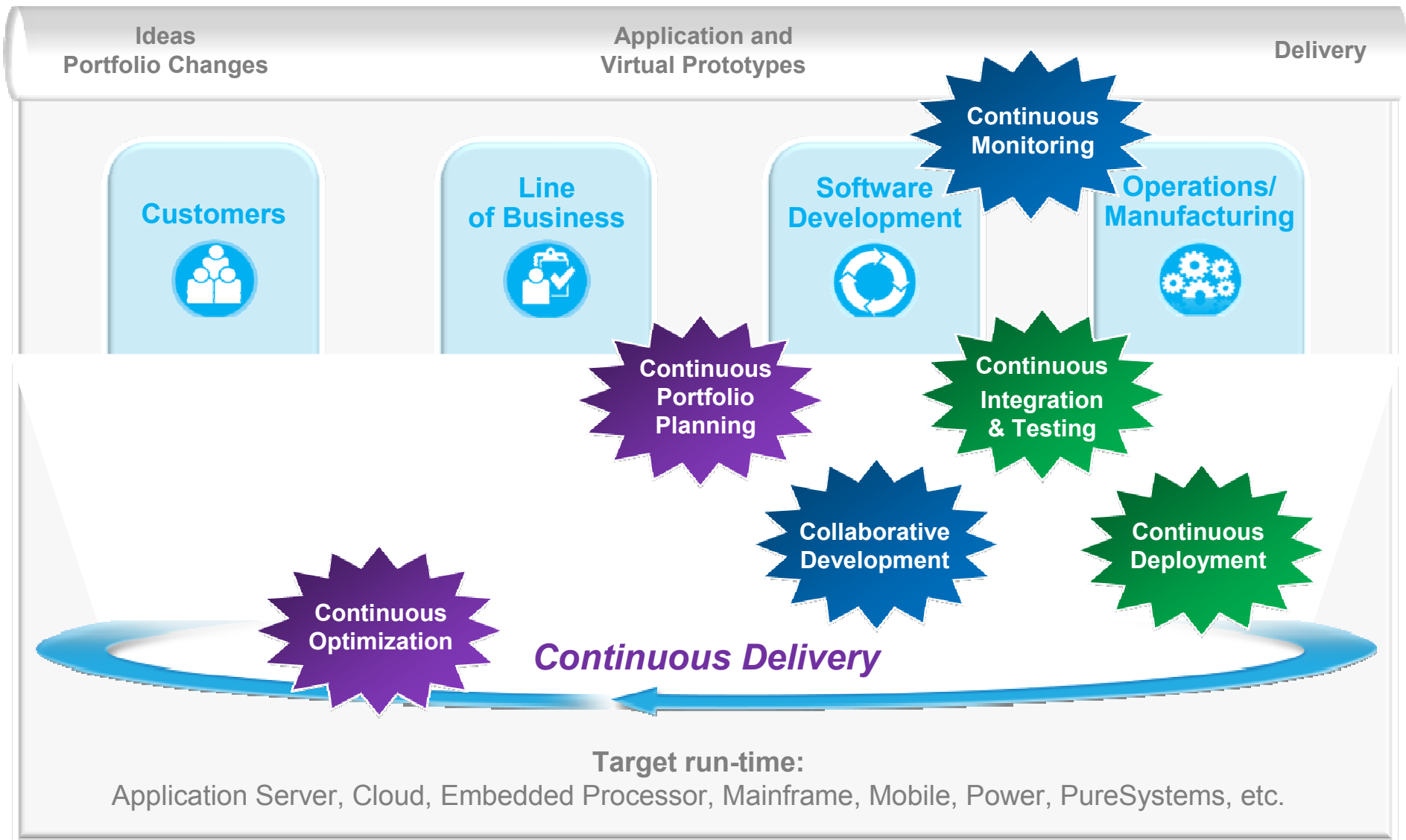


***Continuously deliver software-driven innovation  
and business value***

Desde IBM ¿Cómo ayudamos ?



## Software delivery lifecycle: *Emerging — DevOps*



## Capabilities for accelerated software and systems delivery

### Application Lifecycle Management

#### Collaborative Lifecycle Management

- Integrated software design, broader collaboration, traceability and impact analysis accelerates time to market
- Mobile Lifecycle Management Solution
- **Client experience: International bank reduced build and deployment times by 55%<sup>1</sup>**

#### Test Virtualization Server and SmartCloud Continuous Delivery

- **Client Experience: Computer services company cut costs to create and maintain test environments by up to 80%<sup>2</sup>**
- Automate continuous integration, provisioning and deployment to improve delivery throughput and quality
- Streamline agile testing
- **Client Experience: Computer services comp. reduced testing time from 2 weeks to 3 days<sup>3</sup>**

#### Lifecycle Integration Adapters

- Integrations to third party solutions from Rational CLM solution
- Facilitate deployment in existing customer environments

See speaker notes for sources.

### Complex and Embedded Systems

#### Industry Accelerators

- Industry tailored guidance facilitates faster time to value

#### Visualize, analyze and organize

- New RELM integrations support design, test, simulation, and industry solutions
- Lower variance in costs/schedule performance
- DOORs Next Gen providing requirements management for product management on Jazz Platform

### Enterprise Modernization

#### Integrated Solution Accelerators

- Renew and re-architect existing applications through impact analysis, and application flow capabilities
- **2012 study found that automated test, virtualization and reporting capabilities reduced test cycles from months to weeks<sup>4</sup> and reduce defects by up to 90%<sup>5</sup>**

#### Compilers for System z and Power Systems

- **Benchmarking found application performance boosted by 20% -60% by exploiting the latest IBM middleware and hardware<sup>6</sup>**

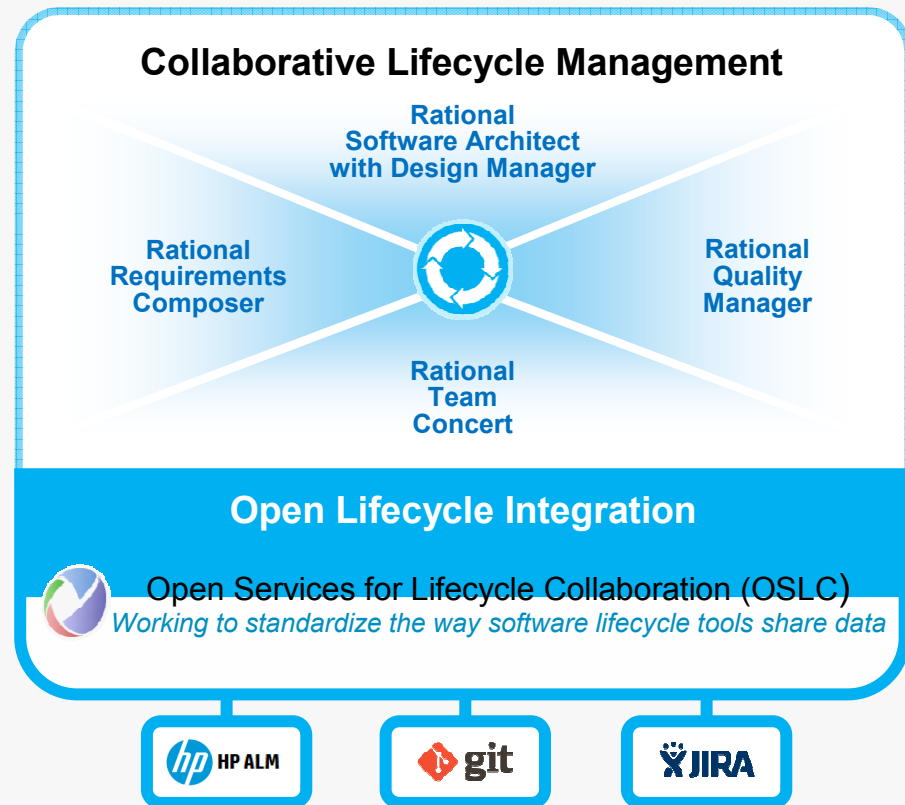
**We have the strongest portfolio in the industry!**



# Key new capabilities extend collaborative lifecycle management and continuous delivery for IT



- **IBM SmartCloud Continuous Delivery**
- IBM Rational Governance of Application Development Outsourcing
- IBM Rational Integrated Solution for Application Portfolio Management
- IBM Rational Planning for Compliance Solution for Financial Services
- **IBM Mobile Development Lifecycle Solution**
- Agile Assessment
- IBM solution for Collaborative Lifecycle Management with integrated design
- **IBM Rational Lifecycle Integration Adapters**
- **IBM Quality Management and Testing**
- IBM Planning Services Offerings



## We are best positioned to give the market place what it needs

### **Expertise and ecosystem**

- Solutions based on over **25 years** of proven best practices – **60K+** users in IBM
- **1,800+** Rational software developers & **1,300+** field technical specialists worldwide, **40+** industry-recognized experts
- **1,500+** business partners representing leading worldwide system integrators and solution providers
- **+200%** YtY Systems partners, **+13%** YtY ISVs, **+20%** YtY partner solutions, and **130K+** Jazz.net members (**+34%**); OSLC collaboration with **40** organizations across **12** domains

### **Extensive worldwide client base – 33,000+ clients worldwide and 8000+ are in Europe; nearly 500 new customers worldwide and 100 are in Europe**

- 9 of the Fortune Top 10, 45 of the Fortune Top 50, 93 of the Fortune Top 100 companies use Rational
- All 10 Top Companies in each of Aerospace and Defense, Automotive Manufacturing, Smart Phone Manufacturing, Medical Devices, Semiconductors, Energy and Utilities, Communications Service Providers and Network Equipment Providers use Rational

### **Analyst recognition**

- #1 in Gartner's 2011 WW Application Development Software market share (Gartner Inc. Market Share: All Software Markets Worldwide, March 2012)
- #1 in Evans Data User's Choice Survey for Software Development Platform, 2012
- Highest scores in Forrester Wave for ALM and Leader in Integrated SOA, 2012
- A leader in Gartner Magic Quadrant for EA Tools, SOA, and ALM, 2012
- A leader in IDC MarketScope and rated #1 in IDC WW SCM 2012-2016 Forecast
- Best of breed Ovum Tech Assessment, 2012
- A leader in the combined enterprise and embedded agile market, and Requirement Managements for SSE, VDC, 2012
- A leader in Worldwide Modeling and Architecture Tool 2011 Vendor Shares, IDC

# Exitos de clientes

## IBM client successes



**Cut deployment time from four hours to 10 minutes**

*“Rational products give us an end-to-end solution, because Rational has dedicated solutions for specific domains in the software development lifecycle.”*

Tansu Dasli  
 Middleware Development Manager,  
 Avea



**Increased development productivity by 30 percent**

*“IBM Rational Team Concert is the backbone of Danske Bank’s agile development process and is adjusted to the special needs of the bank.”*

Peter Rasmussen  
 Senior VP, IT Development Processes and Tools,  
 Danske Bank Group



**Reduced software validation time by 90 percent**

*“Historically, it could take us three days to root cause an issue, by putting the upfront efforts into tool set design, that’s done in 30 seconds automatically with no human intervention.”*

Matt Jones  
 Senior Technical Specialist,  
 Infotainment V.P. GENIVI,  
 Jaguar Land Rover



**Accelerated time to market by 20 percent**

*“To enhance competitiveness to achieve business target, and drive projects successfully, it requires not only tool’s functionality, but also maximization total power of team... and we did it.”*

Hirozumi Eki  
 JTEKT Corporation

Note: The benefits noted here are specific to each individual client. Other client experiences may differ depending on use case.

## Avea

*Cuts deployment time from four hours to 10 minutes*

### The need:

Avea, a leading communications service provider in Turkey, needed to improve its time to market and increase software quality for its mobile communications applications by implementing a standard set of integrated development tools for the entire organization.

### The solution:

Avea standardized on IBM® Rational® Requirements Composer and IBM Rational Team Concert™ software, helping eliminate the issues caused by separate, disparate development tools.

### The benefits:

- Decreased versioning and deployment problems by approximately 30 percent\*
- Reduced deployment time for middleware services from four hours to ten minutes\*
- Helped the company deliver higher quality software more quickly

\* The benefits noted here are specific to this client. Other client experiences may differ depending on use case.



*“Rational products give us an end-to-end solution, because Rational has dedicated solutions for specific domains in the software development lifecycle.”*

Tansu Dasli  
Middleware Development Manager,  
Avea

**Solution components:**

- IBM® Rational® Requirements Composer
- IBM Rational Team Concert™

## Communications service provider

### *Increased test team efficiency by 300 percent*

#### **The need:**

This communications service provider needed to revamp its manual approach so that it could decrease testing time and increase the quality of its applications.

#### **The solution:**

The provider engaged IBM consultants to help it create a detailed design document. The team then defined an initial test to determine the level of achievable automation.

#### **The benefits:**

- Increased team efficiency by 300 percent, reducing a typical testing cycle from four weeks to less than one week\*
- Decreased test completion timeframe, allowing for test conclusions in 25 percent to 40 percent of the original estimated time\*
- Established future uses of the software, in the company's development process and for performance and regression testing



*“Once the initial test was complete and the results were verified, our testing team was easily able to define additional tests from scratch or to reuse pre-defined tests.”*

Communications Service Provider

#### **Solution components:**

- IBM® Rational® Test Workbench

\* The benefits noted here are specific to this client. Other client experiences may differ depending on use case.



## Danske Bank Group

### *Adopts agile development practices and reduces time to market*

#### The need:

Danske Bank Group wanted to deliver new services faster. It sought to reduce time to market from approximately 14 months to nine months and increase IT development efficiency by 10 percent.

#### The solution:

The bank adopted agile development methods supported by IBM Rational Team Concert software to improve the quality of deliveries and to achieve work processes that come more naturally to employees.

#### The benefits:

- Reduced time to market from 14 months to 9 months and improved quality through an iterative development model and processes.\*
- Increased IT development efficiency by 10% with more team collaboration and transparency across geographically distributed teams.\*
- Supported flexible agile development methods that are customized to meet the needs of the company.

\* The benefits noted here are specific to this client. Other client experiences may differ depending on use case.



*“IBM Rational Team Concert is the backbone of Danske Bank’s agile development process and is adjusted to the special needs of the bank.”*

Peter Rasmussen  
Senior Vice President,  
IT development processes and tools,  
Danske Bank Group

Danske Bank

#### Solution components:

- IBM® Rational® Team Concert™

## Jaguar Land Rover cuts software validation time by 90 percent

### *IBM Rational software helps manage near-real-time requirements updates for 6,000 developers worldwide*

#### The need:

Jaguar Land Rover plc wanted to implement a standard requirements methodology that would enable it to manage increasingly complex requirements and speed new features to market.


#### The solution:

The company implemented a suite of IBM® Rational® software to create a new requirements management and modeling system.

#### The benefits:

- Reduces the time required to fully validate software by more than 90 percent, from six to eight weeks to only three days\*
- Decreases bug-cause detection time by more than 99 percent, from three days of human intervention to 30 seconds\*
- Accelerates time to market for in-vehicle entertainment systems and helps increase innovation

\* The benefits noted here are specific to this client. Other client experiences may differ depending on use case.



*“Historically, it could take us three days to root cause an issue, by putting the upfront efforts into tool set design, that’s done in 30 seconds automatically with no human intervention.”*

Matt Jones  
Senior Technical Specialist, Infotainment  
Vice President GENIVI  
Jaguar Land Rover

**Solution components:**

- IBM® Rational® ClearCase®
- IBM Rational ClearQuest®
- IBM Rational DOORS®
- IBM Rational Rhapsody®

## Gestión Centralizada de la Configuración Organismo de Sector Público

Problemas en el desarrollo y despliegue de aplicaciones  
Equipos de desarrollo de 600 personas

### Situación antes:

- Entregas defectuosas a Pre-Producción
- Ninguna trazabilidad en los artefactos en el ciclo de vida de desarrollo
- Poca fiabilidad de estar trabajando con versiones correctas
- Sistemas heterogéneos de gestión de la configuración
- Detección de defectos dificultosa

### Situación después:

- Entregas planificadas a pre-producción
- Seguimiento mediante work items en todos los pasos del desarrollo (edición, compilación...)
- Mismos procedimientos de trabajo con un sistema de gestión de configuración común para todos los miembros del equipo de desarrollo
- Sistema centralizado de gestión de configuración para todas las tareas y lenguajes
- Posibilidad de seguimiento y tratamiento automático de defectos

**Solución:** Rational team Concert Enterprise para System z y distribuido  
Rational developer for System z para desarrollo Cobol y Java

### Beneficios:

- Coordinación entre los equipos de desarrollo, preproducción y producción
- Fiabilidad en la entrega de aplicaciones de desarrollo a Pre-Producción
- Ahorro de tiempos en la puesta en producción de las aplicaciones con un sistema de promociones entre los distintos entornos rápido y fiable.
- Mejora en la calidad de las aplicaciones al tener menos errores en tiempo de desarrollo, incluidos costes de mantenimiento. 25% de ahorro > 5M€ anuales
- Eficiencia en el desarrollador al tener un entorno colaborativo eficaz 20% de ahorro en productividad. >4.5M€ anuales

## Y todos juntos ¿Qué hacemos?

..... ayudar nuestras organizaciones a transformar la innovación en resultados de negocio, mediante una Supply Chain de Software cada día más eficiente.

